

**Regular Sale
Every Tuesday**

9:30 am Hay/Straw
11:00 am Springers,
Dairy Cows,
Breeder Bulls
12:00 pm Sheep,
Goats, Hogs
followed by
Bull & Heifer Calves
2:00 pm Feeders
Butcher Bulls,
Fats & Cows

601 E Lake St.
PO Box 279
Topeka, IN
46571



Phone (260) 593-2522
Fax (260) 593-2258

www.topekalivestock.com

Owners:
Rick & Andrea
Welsh
AC31600016

SPECIAL SALES

Springer 4/9
Feeder 4/21

Community Health
Benefit Auction 4/17

Hoosier Sheep & Goat
Classic 4/18

St. Jude Benefit
Horse Pull 5/2

Market Report 3/31 • 308 Total Head Sold

DAIRY

Springers 13 Top of \$3350
Dairy Cows 28 Top of \$3500
Heifer Calves 25 Top of \$1450
Breeder Bulls 1 Top of \$2150

FEEDERS & DAIRY FEEDERS

Holstein Dairy Hfrs 2 Top of \$1800
Holstein Feeder Strs 7 Top of \$4.25/lb.

SHEEP / GOATS / HOGS

Sheep 1 \$1.10/lb.
Goats No Test
Hogs 2 \$0.40-\$0.43/lb.

HAY & STRAW

Hay 23 loads \$50 - \$370/ton
3 loads \$310-\$370 (\$336.67 Avg)
13 loads \$240-\$290 (\$267.31 Avg)
7 loads \$50-\$205 (\$144.29 Avg)
Straw No Test

A Note From Rick: Markets continued to be strong at TLA this week. The butcher cow market was the highlight this week as prices took another jump. This market has been very steady throughout the last several months. Prices were \$5-\$10 higher this week throughout the butcher cow sale. Calf prices were steady this week along with feeders. We had a nice selection of fresh cows & heifers to offer in the dairy sale & prices were higher. We'll get another good test of this market next week at the Special Springer Sale. Have a great week & we hope to see you soon at TLA!!

SLAUGHTER

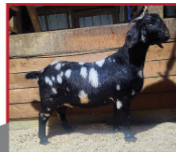
Cows 92 Top of \$178.00 Overall avg (\$135.28 avg)
Top 10 \$168.00-\$178.00 (\$171.70 avg)
Top 25 \$156.00-\$178.00 (\$164.90 avg)
Top 50 \$143.00-\$178.00 (\$157.43 avg)
Bottom 50 \$34.00-\$147.00 (\$114.95 avg)
Mixed 8 Top of \$239.50
Holsteins 7 Top of \$203.00
Bulls 2 Top of \$188.00

BULL CALVES

Hol. Bull Calves 83 \$2.50-\$15.00/lb. (\$12.55/lb. overall avg)
Top 10 \$14.75-\$15.00/lb. (\$14.93/lb. avg)
Top 25 \$14.25-\$15.00/lb. (\$14.71/lb. avg)
Top 50 \$12.75-\$15.00/lb. (\$14.07/lb. avg)
Cross Calves 37 \$16.00-\$21.00/lb. (\$17.62/lb. avg)

HOOSIER SHEEP & GOAT CLASSIC

April 18th, 2026 @ 10:00 am



CONTACTS

Myron Miller Jay Frey
574-849-6711 260-215-3683

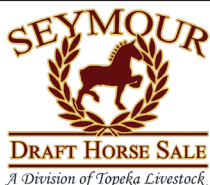


**14th Annual Benefit
Horse Pull & Auction**

"Pulling For The Kids"

May 2nd, 2026

For More Information Contact:
Tom Brown (517) 607-5686



JUNE 11th-13th, 2026

*Catalog Deadline
April 27th, 2026*

For more info contact:

Contact: Dewayne Beechy
(260) 593-2522 office (260) 350-9829 cell

For Cattle Consultations or Appraisals, Call Rick Welsh (219) 363-2900