

**Regular Sale  
Every Tuesday**

601 E Lake Street  
PO Box 279  
Topeka, IN  
46571



Phone (260) 593-2522  
Fax (260) 593-2258

[www.topekalivestock.com](http://www.topekalivestock.com)

Owners:  
Rick & Andrea  
Welsh  
AC31600016

**SPECIAL SALES**  
Springer 4/9  
Feeder 4/21

Community Health  
Benefit Auction 4/17

Hoosier Sheep & Goat  
Classic 4/18

St. Jude Benefit  
Horse Pull 5/2

**Market Report 3/24 • 399 Total Head Sold**

**DAIRY**

Springers ..... 16.....Top of \$3500  
Dairy Cows..... 15.....Top of \$3525  
Heifer Calves.....23.....Top of \$1400  
Breeder Bulls.....No Test

**FEEDERS & DAIRY FEEDERS**

Holstein Dairy Heifers.....73.....Top of \$2425  
Group of 4..... 885lb. avg .....\$2350  
Group of 6..... 836lb. avg .....\$2425  
Group of 6..... 710lb. avg .....\$2250  
Group of 6..... 706lb. avg .....\$2300  
Group of 3..... 643lb. avg .....\$1900

Holstein Feeder Strs.....5.....Top of \$3.05/lb

**SHEEP / GOATS / HOGS**

Sheep ..... 11 ..... \$1.00-\$1.75/lb.  
Goats ..... No Test  
Hogs ..... 3 ..... \$0.59/lb.

**HAY & STRAW**

Hay.....26 loads.....\$75-\$380/ton  
4 loads..... \$350-\$380.....(\$357.50 Avg)  
13 loads.....\$220-\$290.....(\$266.92 Avg)  
9 loads.....\$75-\$200.....(\$161.67 Avg)  
Straw ..... 1 load ..... \$160/ton

**A Note From Rick:** All markets were either steady or stronger this week at TLA. We continue to see very active markets with very strong prices. This has been a trend for quite some time with no signs of slowing down anytime soon. Cattle numbers are down & demand is up. I look for this to get even stronger locally as we approach the Spring season, which always creates even more demand. Bottom line is we are experiencing record high prices in a lot of categories & I get the feeling they could get even higher. The numbers are shocking to all of us, but when you look at the whole picture it makes sense. Have a great week & a Happy Easter! Hope to see you soon at TLA!!

**SLAUGHTER**

Cows 85 Top of \$172.00 Overall avg (\$122.09 avg)  
Top 10 \$152.50-\$172.00 (\$160.90 avg)  
Top 25 \$144.00-\$172.00 (\$153.24 avg)  
Top 50 \$128.00-\$172.00 (\$144.25 avg)  
Bottom 50 \$30.00-\$139.00 (\$103.83 avg)  
Mixed 8 Top of \$217  
Holsteins 6 Top of \$208.50  
Bulls 8 Top of \$214

**BULL CALVES**

Bull Calves.....109.....\$3.25-\$15.25/lb. (\$12.75/lb. avg)  
Top 10.....\$14.75-\$15.25/lb. (\$15.05/lb. avg)  
Top 25.....\$14.25-\$15.25/lb. (\$14.72/lb. avg)  
Top 50.....\$13.50-\$15.25/lb. (\$14.34/lb. avg)  
Cross Calves.....37...\$17.00-\$21.50/lb. (\$18.62/lb. avg)



**DRAFT HORSE SALE**  
A Division of Topeka Livestock

**JUNE 11<sup>th</sup>-13<sup>th</sup>, 2026**

*Catalog Deadline  
April 27<sup>th</sup>, 2026*

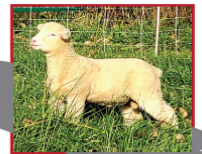
**For more info contact:**

Contact: Dewayne Beechey

(260) 593-2522 office (260) 350-9829 cell

**HOOSIER SHEEP & GOAT CLASSIC**

April 18<sup>th</sup>, 2026 @ 10:00 am



**CONTACTS**

Myron Miller 774-849-6711  
Jay Frey 260-215-3683



**14<sup>th</sup> Annual Benefit  
Horse Pull & Auction**

*"Pulling For The Kids"*

**May 2<sup>nd</sup>, 2026**

For More Information Contact:  
Tom Brown (517) 607-5686

**For Cattle Consultations or Appraisals, Call Rick Welsh (219) 363-2900**