



Create a Genogram Map

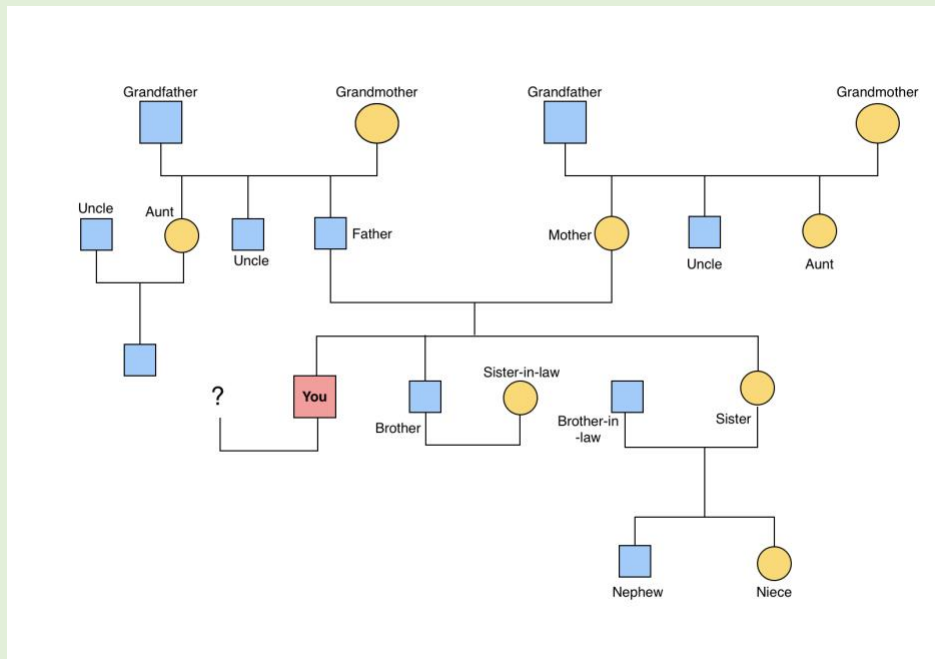
For this activity, you will create a genogram, which is a visual diagram (like a family tree) of your family and shows the relationships between family members,

1. **Create a Map.** You can go as far out from your immediate family as you wish. See these resources to help with developing your [genogram](#).

PDF of Symbols from the [State of Kansas Department for Children and Families](#)

(Click the link to download the PDF)

Example Map:



Source of Image: [GitMind](#)

2. **Observations.** On the map, use markers or pens to note your observations, feelings, and thoughts.

Examples:

- ethnic background
- home countries
- occupations
- significant dates
- values
- beliefs
- practices
- **or other patterns you see**