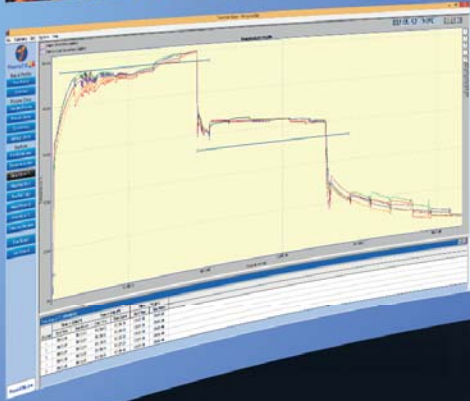
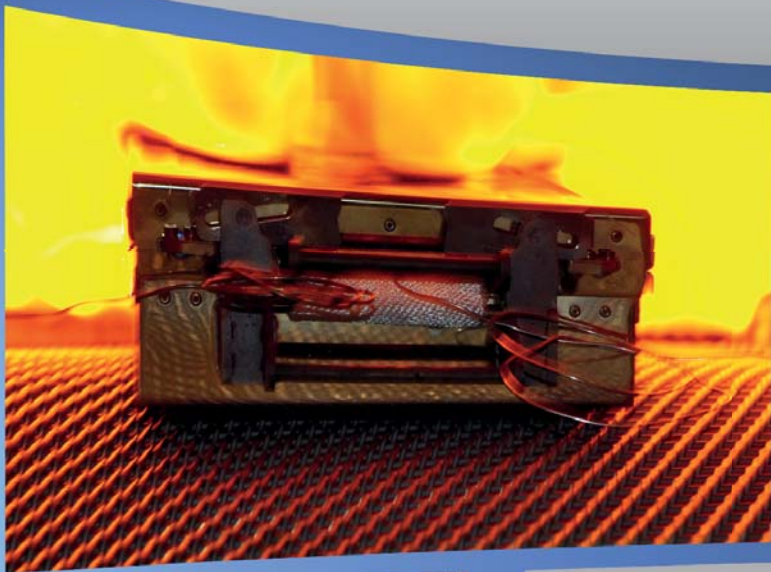




PhoenixTM
Phoenix Temperature Measurement

HTS02 Systems

For heat treatment processes above 800°C



...where experience counts !

Phoenix™ HTS02 Systems for processes above 800°C

Data Logger

All Phoenix™ data loggers are designed for use in harsh industrial environments. The electronics are protected by a robust, water resistant, Aluminium case. The data logger design incorporates signal noise reduction and cold junction compensation to guarantee accurate and reliable data. All loggers are shipped with a factory calibration certificate traceable to national standards. Optional certification to UKAS (UK) or DKD (Germany) can be supplied if required.

Type	PTM1-006, PTM1-010, PTM1-020
No. of channels	6, 10 or 20
Thermocouple type	K or N
Measurement range	Type K: -100°C - +1370°C Type N: -100°C - +1300°C
Accuracy	+/- 0.3°C
Resolution	0.1°C
Max operating temperature	80°C
Battery type	2 x Standard Alkaline (AA)
Sampling rate	Adjustable from 0.5 second to 1 hour
Memory	440,000 data points, non-volatile memory
Start trigger	Start button, time, temperature or software
Dimensions	20 x 98 x 200mm (h x w x l)



Radio transmission as an option



Robust and waterproof housing for reliable use in hostile environments



Up to 400 hours measurement time



Where experience counts!





TS02 Thermal Barriers

Strengthened and reinforced at critical points to minimise distortion, PhoenixTM TS02 Thermal Barriers are designed to offer full protection to the data logger in demanding high temperature conditions. Designed to accommodate data loggers with up to 20 channels, TS02 barriers are fitted with extra heavy duty catches, dual thermocouple exits and user replaceable thermocouple wear strips to help extend the life of the thermal barrier.



Standard maximum operating temperature up to 1000°C. Optional high temperature insulation can extend the temperature up to 1100°C subject to process conditions.

High temperature, robust, and distortion resistant catches.



Type	TS02-130	TS02-155	TS02-175	TS02-200	TS02-250	TS02-300
200°C / h	6.2	12.0	15.5	17.0	25.0	28.5
400°C / h	2.2	5.0	6.5	8.0	12.2	16.5
600°C / h	1.4	3.0	4.0	5.0	8.5	10.5
800°C / h	1.1	2.0	2.0	3.5	6.2	8.0
950°C / h	0.9	1.5	1.8	2.5	4.9	7.0
Height / mm	130	155	170	200	250	300
Width / mm	250	315	315	315	355	405
Length* / mm	605	605	605	605	630	680

* for a 20 channel data logger

Heat sinks with very high thermal capacity and gas tight seals allow use in vacuum or pressure applications up to 20 bar.



Dual thermocouple exits with replacement wear-strip to extend thermal barrier life and minimise maintenance costs.



Need a thermal barrier to suit your application? Tell us your requirements, and if it's possible, we'll design and manufacture it for you! We are constantly developing and looking forward to any new challenge.

Thermocouples

For temperatures from 250°C to more than 1000°C mineral insulated thermocouples are generally the first choice. The thermocouples wires are insulated by magnesium oxide and protected by a high grade alloy sheath. For special applications we can supply thermocouples with other insulation materials.

Thermocouples can be welded, mechanically held, or retained in holes to record temperatures at critical points.



Type K or N mineral insulated thermocouples in 1.5 and 2.0mm diameter.

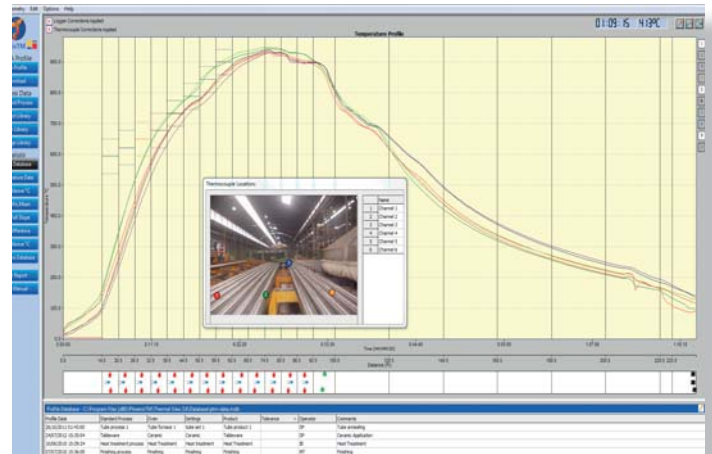
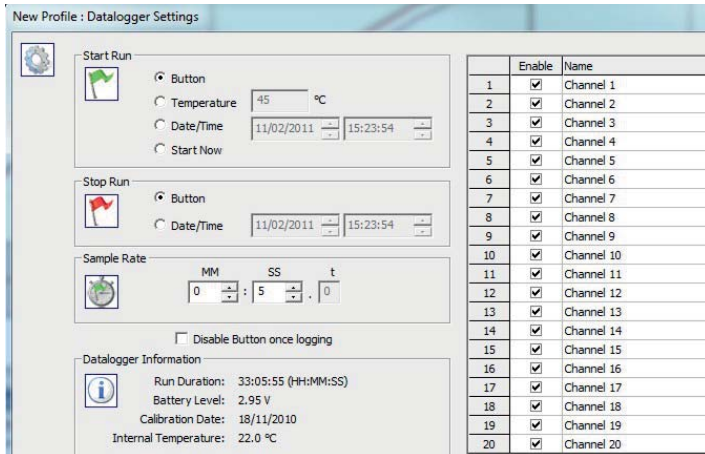


Thermal View Plus

The easy way to get a perfect result!



PhoenixTM
Phoenix Temperature Measurement

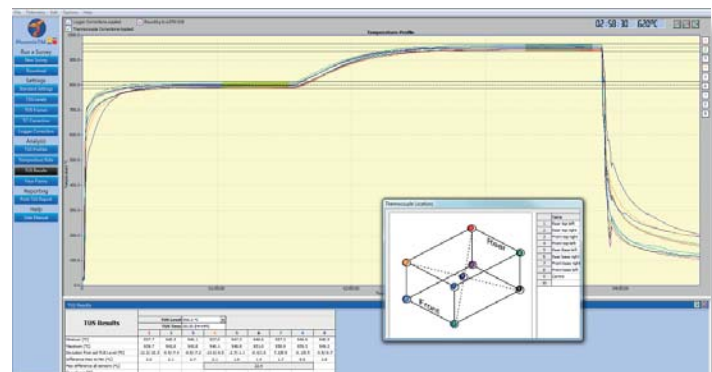
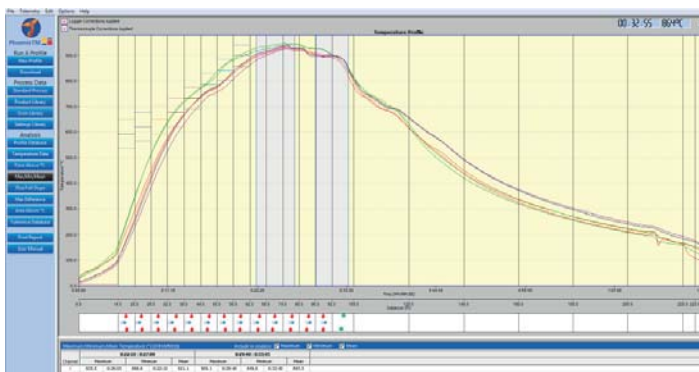


Simply enter:

- How to start the data logger
- The rate at which data is to be collected
- The number of thermocouples to be used.

For regular measurements these can be set with one mouse click or pressing the data logger start button.

The temperature profile is displayed in the graphics window of the Thermal View software. Thermocouple profiles can be switched on or off individually and you can zoom in for more detailed analysis.



Comprehensive analysis tools are located on the left side of the screen for single click analysis and report generation. Data import and export in both .csv and PhoenixTM formats are available allowing electronic transfer of process data.

A separate software package, "Thermal View Survey" is available for surveying furnaces to AMS2750 requirements. Featuring thermocouple and data logger correction factors, user defined TUS levels and tolerances, View Frame analysis, overshoot search, data import / export, printed AMS2750 report. Contact us for a demo version!

PhoenixTM Ltd
8, St. Thomas Place
Cambridgeshire Business Park
Ely, CB7 4EX, UK



Tel.: +44 1353 223100 www.Phoenixtm.com
Fax: +44 1353 968684 sales@phoenixtm.com

 PhoenixTM LLC, USA
info@phoenixtm.com

 PhoenixTM GmbH, Germany
info@phoenixtm.de