

Project name: LGBT Youth Mental Health Support

Screen title: Title Screen

Screen #: 1/18



Interaction(s)



"Begin" Button - Next Slide
Title/Button - Fades in

Notes

Audio

NA

WELCOME

Click Here to exit  

Complete the following module to improve overall understanding of specific mental health challenges that LGBTQ youth experience. This module will guide the user through the specific challenges faced by LGBTQ youth and how to improve mental health treatment for LGBTQ youth clients.



Click Here to return to previous screen

Click Here to return to next screen



Click Here to return to Home screen



Interaction(s)

Back/Forward Button - Previous slide/next slide

Image/Buttons/Text will fade in

"X" button - exit program

Notes

Title/Text Fades In
Image - Flies in Left

Audio

NA

Learning Objectives



- Define and recognize the unique challenges that LGBTQ youth face
- Design a safe space for your LGBTQ clients
- Recommend appropriate supportive mental health services for LGBTQ youth clients

Interaction(s)

Back/Forward Button - Previous slide/next slide

“X” button - exit program

Home Button - Return to Slide 2

Notes

Title/Text/Button - Fade In

Home

Back

Next

Audio

NA

Glossary



- **LGBT** - acronym for lesbian, gay, bisexual, & transgender
- **Lesbian** - women who is romantically/sexually attracted to other women
- **Gay** - men who are romantically/sexually attracted to other men
- **Bisexual** - individual who is romantically/sexually attracted to both men and women
- **Transgender** - denoting or relating to a person whose sense of personal identity and gender does not correspond with their birth sex.
- **Coming Out** - individual who accepts, acknowledges, and shares their sexual orientation with others
- **Closeted** - LGBT individual who has not disclosed their sexual orientation to others
- **Outing** - exposing an LGBT person's' sexual orientation without their consent
- **Sexual Orientation** - a person's sexual identity or self-identification as bisexual, heterosexual, homosexual, pansexual, etc
- **Homophobia** - fear and hatred of or discomfort with people who are attracted to members of the same sex

Interaction(s)

Back/Forward Button - Previous slide/next slide

“X” button - exit program

Home Button - Return to Slide 2

Notes

Title/Button/Text - Fades In

Home

Back

Next

Audio

NA

Statistics



- In the US, approximately [4.5% of the population](#) identify as LGBT
- LGBT individuals are more than twice as likely to experience a mental health condition than heterosexual individuals
- Approximately, [68% of LGBT youth](#) have experienced generalized anxiety symptoms in the last 2 weeks.
- 46% have wanted psychological/emotional counseling but have been unable to receive it
- 48% of LGBT youth have engaged in self-harming activities at some point in time
- 1 in 3 LGBT youth have been the victim of physical or emotional harassment

Interaction(s)

Back/Forward Button - Previous slide/next slide

“X” button - exit program

Home Button - Return to Slide 2

Notes

Title/Button/Text - Fades In

Home

Back

Next

Audio

Main Menu



LGBTQ
Youth-Specific
Challenges

Creating a
Safe Space

Supporting
LGBT Youth
Clients



Home

Back

Next

Interaction(s)

Back/Forward Button - Previous slide/next slide

“X” button - exit program

Home Button - Return to Slide 2

Click respective section button to be taken to appropriate section module

Notes

Each section will change color once section completed.

Only “LGBT Youth-Specific Challenges” active for this phase

Audio

NA

LGBTQ Youth-Specific Mental Health Challenges



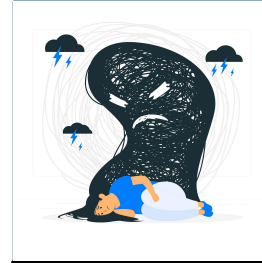
Coming Out



Bullying



Substance Abuse



Suicide

Interaction(s)

“X” button - exit program

Home Button - Return to Slide 2

Coming Out/Bullying/Substance Abuse/Suicide buttons take user to respective modules

Notes

Each section will change color once section completed.

Home

Audio

NA

What is Coming Out?



Interaction(s)

Back Button - Return to Slide 6
Forward Button - Next Slide

"X" button - exit program

Home Button - Return to Slide 2

Notes

Individual who accepts, acknowledges, and shares their sexual orientation with others

Home

Back

Next

Audio

How "Coming Out" Affects Mental Health



Click images below to learn more



Rejection when coming out increases levels of anxiety, depression, and other associated mental health conditions



Interaction(s)

Back Button - Return to Slide 8
Forward Button - Go to Slide 6 (not active until all images have been clicked)

Home Button - Return to Slide 2

"X" button - exit program

Notes

Click image to show text overlay
--see next slide

Audio

NA

How Coming Out Affects Mental Health



Click images below to learn more

Privacy

LGBTQ youth have the additional stress of placing a great deal of importance on their privacy for fear how their community will react to their LGBTQ identity.

Safety

LGBTQ youth may not be feel they are able to come out safely to their [families for fear of victimization and/or homelessness.](#)

Rejection

Being rejected by family for identifying as LGBTQ increases the [likelihood of depression and self-harm attempts.](#)

Rejection when coming out increases levels of anxiety, depression, and other associated mental health conditions

Home

Back

Next

Interaction(s)

Back Button - Return to Slide 8
Forward Button - Go to Slide 6 (*not active until all images have been clicked*)

Home Button - Return to Slide 2

"X" button - exit program

Notes

Audio

NA

LGBTQ Youth Bullying



[LGBT teens are twice as likely](#) to experience bullying (in-person or cyber) as a result of their LGBT identity

Home

Back

Next

Interaction(s)

Back Button - Return to Slide 6
Forward Button - Next Slide

"X" button - exit program

Home Button - Return to Slide 2

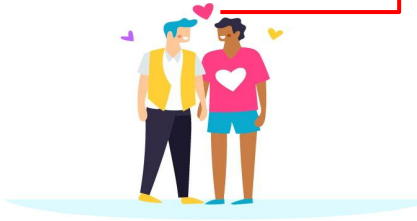
Notes

Audio

NA

Where Does Bullying Occur?

Click images below to learn more



- 33% of LGBT youth have reported being bullied on school grounds within the past 12 months
- 27.1% of LGBT youth have experienced cyberbullying as a result of their LGBT identity
- 23% of LGBT youth have experienced bullying in their dating life or sexual violence within the last 12 months
- Bullying can also be [perpetrated by parents in the home](#). This leads to an increased probability of homelessness and substance abuse/suicidality.

Home

Back

Next

Audio

NA

Interaction(s)

Back Button - Previous Screen
Forward Button - Slide 6

“X” button - exit program

Home Button - Return to Slide 2

Click images to display information about them

Notes

Arrows not to be displayed on-screen; only there for ID reference.

Substance Abuse



The [stress of their stigmatized identity](#) often leads to substance abuse as a coping mechanism

Home

Back

Next

Audio

NA

Interaction(s)

Back Button - Slide 6

Forward Button - Next Slide

“X” button - exit program

Home Button - Return to Slide 2

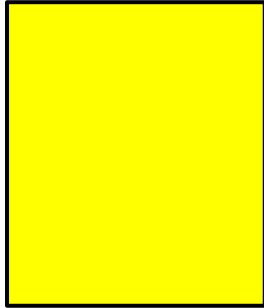
Notes

Let's Compare Reasons for Substance Abuse

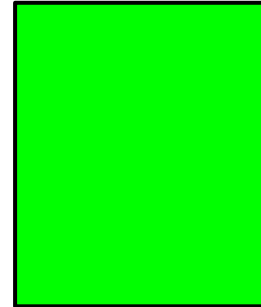
Drag the reason for substance abuse to the appropriate teenage group



Heterosexual Youth



Homosexual Youth



Bullying & Harassment / Family Rejection / Child Abuse / Peer Influence / Conformity / To Feel Grown Up



Interaction(s)

Drag & Drop key words into correct sections

Back Button - Previous Slide
Forward Button - Slide 6

"X" button - exit program

Home Button - Return to Slide 2

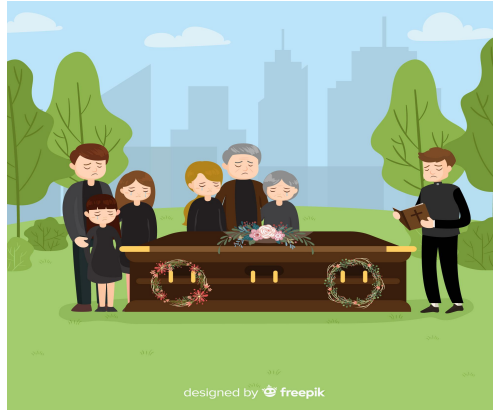
Notes

For reference only: Highlight color corresponds with correct answer

Audio

NA

Suicide



LGBT youth will attempt suicide at **five times** the rates of their heterosexual counterparts

Home

Back

Next

Interaction(s)

Back Button - Slide 6

Forward Button - Next Slide

"X" button - exit program

Home Button - Return to Slide 2

Notes

Audio

NA

Why Are LGBTQ Youth Suicide Rates So High?



Click each thought bubble to find out



Interaction(s)

Back Button - Previous slide slide

Next Button - Return to Slide 7

“X” button - exit program

Notes

User will click each “thought bubble” to bring up an information overlay (see next slide)

Home

Back

Next

Audio

NA

Why Are LGBTQ Youth Suicide Rates So High?



Click each thought bubble to find out

40% of homeless teens identify as LGBT and have been kicked out or left their homes due to lack of acceptance from their families.

Every episode of LGBT victimization increases the chances of self-harming behavior (roughly 2.5 times)

Fear of coming out to a family who will reject them due to their LGBT identity can increase the chances of death by suicide

Lack of a support center increases chances of death by suicide.

Interaction(s)

Back Button - Previous slide slide

Next Button - Return to Slide 7

“X” button - exit program

Notes

User will click each “thought bubble” to bring up an information overlay

Home

Back

Next

Audio

Knowledge Check

Select all that apply



Where are the places that LGBTQ youth are typically bullied?

- Home
- Online
- Dating Life
- LGBTQ Community Centers
- Choir Practice
- None of the above

Submit

Interaction(s)

Submit Button - Submit answer

Submitting Correct Answer automatically proceeds to next Knowledge Check question

Notes

Correct Answers highlighted green.

Correct Answer Popup - "That's Correct!"

Incorrect Answer Popup - "Not Quite. Please try again."

Audio

NA

Knowledge Check

Fill in the blank



LGBTQ youth are _____ times as likely to consider suicide as their heterosexual counterparts

Interaction(s)

Submit Button - Submit answer

Submitting Correct Answer automatically proceeds to next slide

Notes

Correct Answer - 5

Correct Answer Popup - "That's Correct!"

Incorrect Answer Popup - "Not Quite. Please try again."

Audio

NA

Credits



Interaction(s)

--

Notes

--



Audio

NA

Project name:	Screen title:	Screen #:
		Interaction(s)
		Notes
Audio		

Project name:	Screen title:	Screen #:
		Interaction(s)
		Notes
Audio		