

VAPOR MITIGATION SYSTEM TELEMETRY PANELS

APPLICATIONS

- Active Vapor Mitigation Systems
- Passive Vapor Mitigation Systems
- New Construction
- Existing Buildings
- VOCs, Methane, and Radon

AMB

Vapor Monitoring

Telemetry Features

- UL 508A listed telemetry panels for streamlined commissioning and monitoring of vapor mitigation systems
- Automatically collects daily differential pressure data from sub-slab and vent riser locations using AMB Pressure Test Ports for precise and accurate readings.
- Optional CFM sensors add airflow analytics for deeper performance insights on active and passive systems
- Delivers real time monitoring and alert notifications for continuous protection
- Remote access reduces the need for direct access to buildings or units, enhancing efficiency and preserving occupant privacy.
- Each unit connects to a secure cloud-based dashboard with access to one year of data
- Dashboard includes downloadable reports and manual system controls
- Monitoring service covers one full year from shipment date
- Ongoing monitoring available through a subscription-based plan



How it Works

- The monitoring system typically includes two wall-mounted enclosures: a communication box and a port box
- Each pressure test port connects to a solenoid housed within the port box via dedicated tubing
- Solenoids are actuated by relays on a relay board, triggered by the programmable logic controller (PLC)
- Solenoids feed into a manifold system linked to the differential pressure transmitter
- The pressure transmitter communicates with the PLC to log and transmit pressure readings to the cloud
- Optional CFM sensors are wired with low voltage wire from the communication box to the vent risers
- LTE cellular connectivity enables remote cloud access to system telemetry
- Collected data is accessible through a secure dashboard, viewable and downloadable via mobile or desktop devices

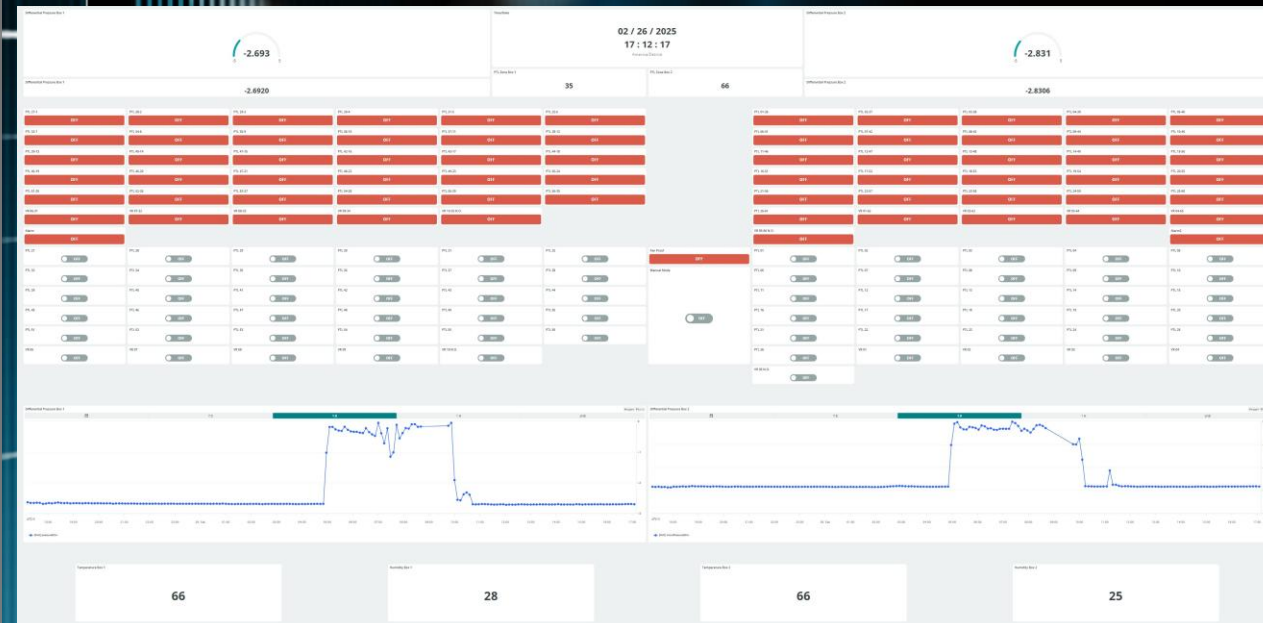


The Cloud

The cloud platform provides secure, remote access and control of the Telemetry System. Key functions include:

- One location for easy access to all your projects.
- Remote control of the solenoids to check individual pressure test locations
- Display of the differential pressure reading from the activated pressure test location
- Display of a graph of the differential pressure data of up to the past 365-days.
- Display of all vent riser CFMs
- Download the data as a .csv file and create a table showing the collected data readings
- Up to two user logins (one for the consultant and one for the owner/operator)

Each telemetry system includes one full year of monitoring services from the shipment date. After the initial term, continued monitoring is available through a subscription-based plan



Installation

- AMB Vapor Monitoring designed the Monitoring System to be user friendly and easy to install.
- Upon receiving the Monitoring System the wall boxes are mounted, low voltage wires are connected to pre labeled terminal blocks in the communication box from the port box, the manifold tube is connected to the differential pressure transmitter, connect the external antennas, plug in the power cord, and you are ready to go!



Pressure Test Ports

- Three versions of pressure test ports are available – Above Slab Pressure Test Ports, Below Slab Pressure Test Ports, and Vent Riser Pressure Test Ports.
- The pressure test ports are fixed with durable ¼-inch push to connect fittings to make the installation process fast and efficient.



Models

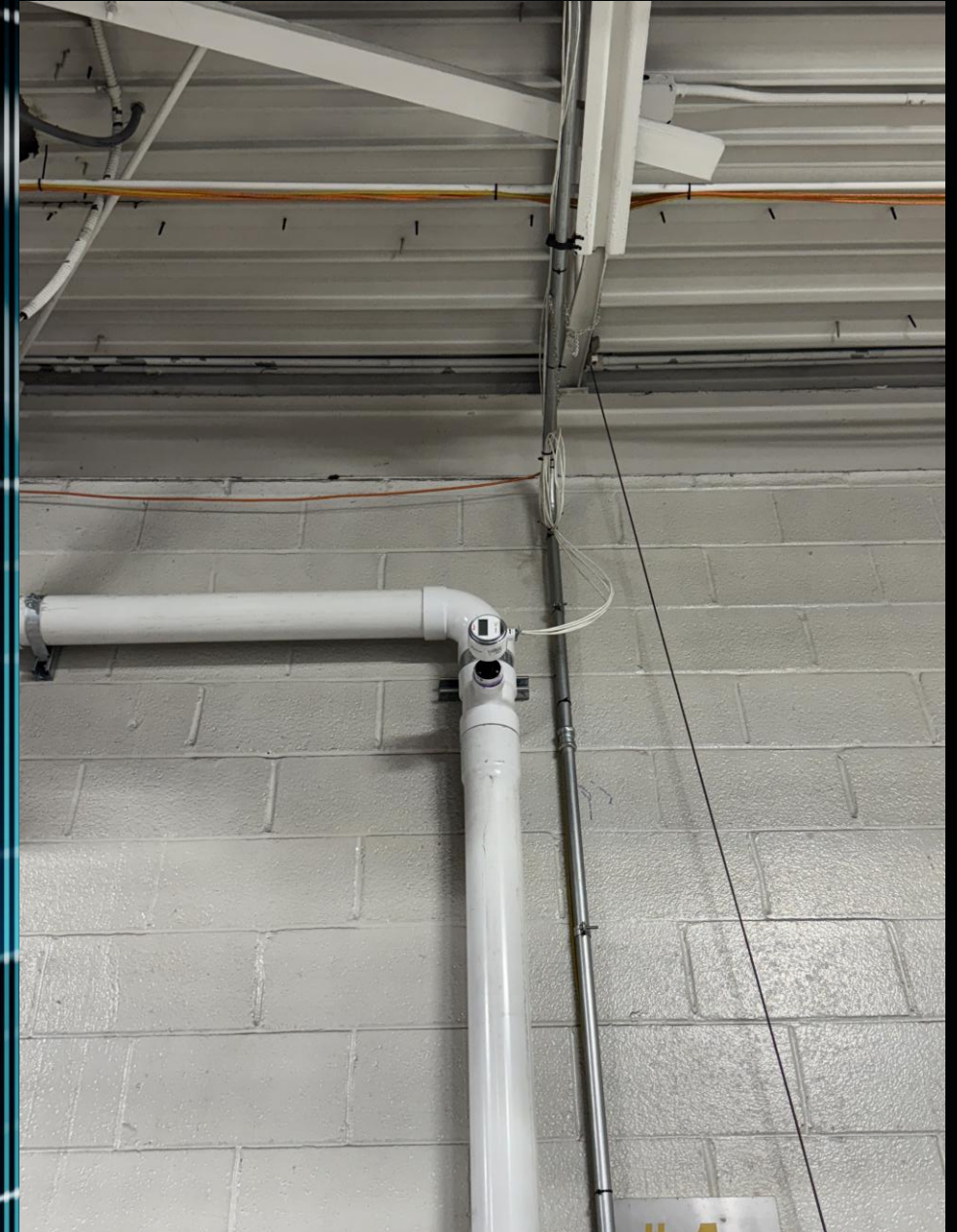
The Sub-Slab Differential Pressure Monitoring System is available in the following models:

- AMB-07 (One Communication Box)
- AMB-14 (One Communication Box One Port Box)
- AMB-21 (One Communication Box One Port Box)
- AMB-28 (One Communication Box One Port Box)
- AMB-35 (One Communication Box One Port Box)
- AMB-42 (One Communication Box Two Port Boxes)
- AMB-49 (One Communication Box Two Port Boxes)
- AMB-56 (One Communication Box Two Port Boxes)
- AMB-63 (One Communication Box Two Port Boxes)
- AMB-70 (One Communication Box Two Port Boxes)



Add on Features

- **Multiple Differential Pressure Sensors:** Supports both high-range and low-range measurements for enhanced system accuracy.
- **Integrated CFM Sensors:** Enables precise flow monitoring across individual vent risers for optimal data collection in both active and passive vapor mitigation systems.
- **Independent Vent Riser Fan Control:** Allows for on/off management of each vent riser fan.
- **Tailored Configurations Available:** Fully customizable to align with unique client specifications and application requirements.



CONTACT US!

AMB

Vapor Monitoring

