

W.E.L.D UNIFORM GUIDELINES FOR COMPETITION AND TRAINING DAYS

These guidelines refer to clothing and gear that will be worn by our riders/members when training and competing.

Official base club colour is red with white and navy trims/offset/pipping and denim coloured pants/jodhpurs.

Attire and gear should be appropriate to your style of riding eg: dressage / western / stockman.

- **When representing WELD at State, National and Inter-Club competitions:** ALL riders need to wear the complete uniform. Un-mounted members are encouraged to wear the WELD red and white checked/pinstripe shirts.
- **WELD Club Competitions:** ALL riders are encouraged to wear full uniform.
- **Competitive grade riders:** are encouraged to wear full uniform and **MUST** wear full uniform when representing WELD at State, National and at another Clubs Competition.
- **Participant grade riders:** can wear neat clean clothing matching your saddle style eg: western saddle - western attire, dressage saddle - dressage attire, WELD uniform at WELD club competitions is encouraged but not compulsory, complete uniform when representing WELD at State or at another Clubs competition is compulsory.
- **Uniforms for training days are:** casual safe attire - riders are encouraged to wear the WELD polo tops.

Club Logo

The club logo should be white on a red background



WELD red checked/pinstriped shirts:

We offer a variety of shirts:

- solid red, or
- red and white checked, or
- red and white striped.

Shirts must be embroidered with WELD logo.

Long or short sleeve acceptable.



Polo Shirts

RESTRICTED

Red is the base colour for our polo shirts.

Solid Red or Red with white and navy trims are acceptable.

Your 1st name may be embroidered on right front side of shirt if desired.

Logo is to be embroidered on left side of shirt or on the back.

Polos may have zippers instead of buttons.

Polos can be short or long sleeved.



STOCK OR TIE: optional

Personal style to suit, as long as it has red, white and/or navy

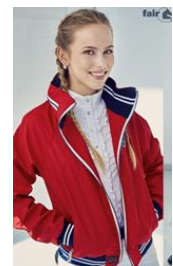


VEST/JACKET: optional depending on weather

Red vest or jacket to be worn with club shirt.

White and /or navy trim/piping is acceptable.

Logo is optional but preferred, on left side or back of vest /jacket.



PANTS/JODHPURS:

Denim or similar colour.

RESTRICTED

Hats

Akubra Hats are allowed, except for Under 18's where an approved helmet must be worn.

See rule book for standards

Abide by insurance requirements

Saddle Pads

Red is the base colour for our saddle pads. White and/or navy trim/pipping is acceptable

The club logo must be displayed on one or both sides.

No other sponsorship, product or branding is to be displayed.

Only certified breed logos to be displayed (ie ASH, AWHA).

No other club or association logos to be displayed.