



PRODUCT BROCHURE

Sump, Effluent and Sewage Controls

*Control Panels, Alarms and Float Switches
From the Controls Leader You Trust*



SJE- **Rhombus**

www.sjerhombus.com





EZ Series®

This line of innovative, affordable control panels is designed to make on-site installations easier. **EZ Series®** control panels combine **circuit board technology and easy operation** for on-site applications. UL/cUL Listed.

An **optional mounting post** featuring a **removable access door** for easy wiring is available. The post can be mounted directly into the ground, over a 4x4 post or conduit for a **quick, clean, easy installation**.

Get In-Site to On-Site™

EZ Series® In-Site® CL control panels now feature a **Bluetooth® smart module** to enable **wireless connection to Android or iOS devices!**

- Eliminates need for PC
- Eliminates opening the panel for configuration, viewing status or data download
- Enables safe and secure access to the panel in all weather conditions.

NEW FLOATLESS TECHNOLOGY!



The **EZ Series® In-Site® CL Bluetooth®** panels utilize the **C-Level™ floatless sensor**:

- Uses pressure to detect liquid level in tank and sends signal to the panel
- Compact design; low voltage
- Easy to adjust set points
- One sensor replaces up to 4 floats
- CL 40 (range up to 40 inches) or CL 100 (range up to 100 inches) models available

The Bluetooth® word mark and logos are registered trademarks owned by Bluetooth SIG, Inc. and any use of such marks by SJE-Rhombus® is under license. Other trademarks and trade names are those of their respective owners.

EZ Series® Single Phase Simplex Demand/Timed Dose and Duplex Demand

- Designed to control one or two single phase 120/208/240V pump(s)
- **Panel Features:** NEMA 4X enclosure, locking latch, red LED alarm beacon on cover, external indicators for control power, alarm power and pump run, external test/silence switch, digital display, pump run button, menu buttons, large terminal block, circuit breakers, and pump run relay
- **Digital Display Features:** float status, elapsed time pump run, cycle counter, alarm counts, float error count, auxiliary alarm counter, timer override count (TD only), on time (TD only), off time (TD only)



Above: Simplex - Below: Duplex



EZ Series® Plugger

- Built-in high water alarm and receptacle to accept a 120V or 230V pump and a piggy-back pump switch
- **Panel Features:** NEMA 4X enclosure, locking latch, red LED alarm beacon, audible alarm, alarm fuse, external test/normal/silence switch



EZ Series® In-Site® CL with Bluetooth® Single Phase Simplex or Duplex Demand/Timed Dose

Data logging panel is now available with wireless Bluetooth® connection for your smartphone or tablet. No need to open the panel for configuration, viewing status or downloading data using the new EZ Connect™ Mobile app.



Simplex Demand/TD 

- Designed to control one (simplex) or two (duplex) single phase 120/208/240V pump(s)
- Panel configuration can be easily converted in the field to either demand dose or timed dose using a tablet or smartphone
- System data including pump run times, pump cycles, alarm conditions, power outages, and more can be downloaded to the same mobile device using the exclusive EZ Connect Mobile App.



Duplex Demand/TD 



EZ Connect™ Mobile App



IFS Single Phase or Three Phase Simplex or Duplex Demand/ Timed Dose

- Designed to control one or two 120/208/240V (single phase) or 208/240/480V (three phase) pumps in water and sewage installations
- Digital display is standard feature
- Panel configuration can be easily converted in the field to either demand dose or timed dose



IFS Single Phase Simplex or Duplex Capacitor Start/Run

- Designed to control one (simplex) or two (duplex) 120/208/240V single phase pump(s) in water and sewage installations
- IEC motor contactor controls pump by switching electrical lines
- Capacitor start module - must be ordered separately or supplied



IFS In-Site® Single Phase Simplex or Duplex Demand/ Timed Dose

Get In-Site to On-Site Systems™
Data logging control panel features a USB port on the inner door. Plug in the flash drive (included with pre-loaded software) to download up to 20,000 system events, including pump run times, pump cycles, alarm events, power outages, and service calls. Quick and easy-to-read reports make identifying system conditions easy.

- Designed to control one (simplex) or two (duplex) single phase 120/208/240V pump(s)
- Panel configuration can be easily converted in the field to either demand dose or timed dose



Time	Event	Time	Event	Time	Event
10/10/2011 10:00:00	Power On	10/10/2011 10:00:00	Power On	10/10/2011 10:00:00	Power On
10/10/2011 10:00:00	Power On	10/10/2011 10:00:00	Power On	10/10/2011 10:00:00	Power On
10/10/2011 10:00:00	Power On	10/10/2011 10:00:00	Power On	10/10/2011 10:00:00	Power On
10/10/2011 10:00:00	Power On	10/10/2011 10:00:00	Power On	10/10/2011 10:00:00	Power On
10/10/2011 10:00:00	Power On	10/10/2011 10:00:00	Power On	10/10/2011 10:00:00	Power On

Event Log Screen displays a complete list of all system events



Daily Events Screen summarizes all events occurring daily



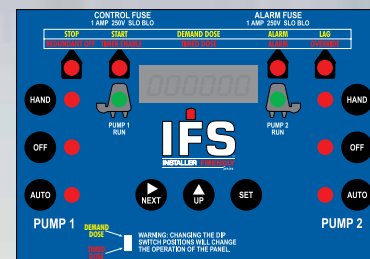
Installer Friendly Series® Single Phase Simplex Drip

- Designed to control one 120/230V single phase pump. Features a touch pad for programming rest for standard time, rest for peak enable time, spin filter flush time, dose time, field flush time, and field drain time
- NEMA 4X enclosure
- UL/cUL Listed



Installer Friendly Series®

The Installer Friendly Series® control panels utilize embedded circuit board technology to provide greater control of septic systems via a **simple-to-use touch pad** on the inner door for programming and monitoring pump and float operation for on-site applications. UL/cUL Listed.



Touch Pad Display Features:

- Easy programming for pump control
- Pump run indicator(s)
- Float status indicators, including float out-of-sequence alarm
- HOA pump control switch(es)
- Hand mode safety feature
- 6 digit LED display includes:
 - Elapsed time meter(s)
 - Cycle counter(s)
 - Alarm counter
 - Lead/lag selector toggles pump operation in duplex models
 - Float error counter
 - Override counter in timed dose models

NEW FLOATLESS TECHNOLOGY!



In addition to floats, all IFS panels are available with the C-Level™ floatless sensor:

- Uses pressure to detect liquid level in tank and sends signal to the IFS panel
- Compact design; low voltage
- Easy to adjust set points
- One sensor replaces up to 4 floats
- CL 40 (range up to 40 inches) or CL 100 (range up to 100 inches) models available

Build-A-Panel™

SJE-Rhombus Build-A-Panel™ control panels offer **pump control and alarm notification** in one convenient package for a variety of on-site applications, including pump chambers, sump pump basins, irrigation systems, lift stations and more.

Build-A-Panel™ Control Panel Models:

- RLS Panels Simplex/Duplex
- NEX Series™ Simplex
- Single Phase Simplex (111, 115, 112)
- Single Phase Duplex (122)
- Three Phase Simplex (312)
- Three Phase Duplex (322)
- Capacitor Start/Run (113, 123)
- Intrinsically Safe (114, 124, 314, 324)
- Time Dosing (TD, DTD, PS11/PS12)
- Plugger Products (JBP, PS Patrol®, UltraNator™, SJE Oil Spotter™, SJE Oil Spotter™ Auto)
- Water Well (126)
- Select Start™ Starter Boxes

Build-A-Panel™ control panels are the right option for your installation. Ordering by options provides you with **greater flexibility**, allowing you customize “standard” control panels to suit your specific needs, whether adding an elapsed time meter, cycle counter or changing float switches. Your Build-A-Panel™ control panels will be **delivered quickly**, at an **affordable price**. UL/cUL Listed.

Each Build-A-Panel™ control panel comes complete with float switches, electrical schematics, float terminal blocks, step-by-step installation instructions and are backed by a five-year limited warranty.

Need your panel in a hurry? Don't worry! SJE-Rhombus offers the Panel Express Program to expedite your panels as fast as the next day! Learn more at www.sjerrhombus.com

RLS Panel Simplex and Duplex

- Designed to control one or two 120/208/240V single phase pump(s).
- Utilizes magnetic motor contactor to control pump
- Standard components allow for easy troubleshooting and service
- UL/cUL Listed



NEX Series™ Single Phase Simplex

- Designed to control one single phase pump in water and wastewater applications
- Universal pump voltage and control/alarm power allows the panel to handle three voltages (120/208/240V)
- Compact NEMA 4X enclosure
- UL/cUL Listed



Model 111 Single Phase Simplex

- Provides a reliable means of controlling one 120/208/240V single phase pump in water and wastewater applications
- NEMA 1 or NEMA 4X enclosure
- UL/cUL Listed



Model 115 Single Phase Simplex

- Provides a reliable means of controlling one 120/208/240V single phase pump in water and wastewater applications
- NEMA 1 or NEMA 4X enclosure
- Pump switch turns pump on/off
- Alarm switch activates alarm
- UL/cUL Listed



Model 112 Single Phase Simplex

- Provides a reliable means of controlling one 120/208/240V single phase pump in water and wastewater applications
- NEMA 4X enclosure
- UL/cUL Listed



Model 122 Single Phase Duplex

- Designed to alternately control two 120/208/240V single phase pumps in water and wastewater applications
- NEMA 1 or NEMA 4X enclosure
- Alternating pump control with override equalizes pump wear
- UL/cUL Listed



Model 312 Three Phase Simplex

- Provides a reliable means of controlling one 208/240/480V three phase pump in commercial and industrial water and wastewater applications
- NEMA 4X enclosure
- IEC motor contactor control
- UL/cUL Listed



Model 322 Three Phase Duplex

- Designed to alternately control two 208/240/480V three phase pumps in commercial and industrial water and wastewater applications.
- NEMA 4X enclosure.
- Alternating pump control with override equalizes pump wear.
- UL/cUL Listed.





Model 114

I.S. Single Phase Simplex

- Designed to control one 120/208/240V single phase pump in intrinsically safe applications
- NEMA 4X enclosure
- Two control switches activate an IEC magnetic motor contactor to turn the pump on and off
- UL/cUL Listed



Model 124

I.S. Single Phase Duplex

- Designed to control two alternating 120/208/240V single phase pumps in intrinsically safe applications
- NEMA 4X enclosure
- Alternating pump control with override equalizes pump wear
- IEC motor contactor control
- UL/cUL Listed



Model 314

I.S. Three Phase Simplex

- Designed to control one 208/240/480V three phase pump in intrinsically safe applications
- NEMA 4X enclosure
- Two control switches activate an IEC magnetic motor contactor to turn the pump on and off
- UL/cUL Listed



Model 324

I.S. Three Phase Duplex

- Designed to control two alternating 208/240/480V three phase pumps in intrinsically safe applications
- NEMA 4X enclosure
- Alternating pump control with override equalizes pump wear
- IEC motor contactor control
- UL/cUL Listed



Model 32S

Three Phase Duplex

- Designed to alternately control two 208/240/480V three phase pumps in commercial and industrial water and wastewater applications
- NEMA 4X stainless steel enclosure
- Alternating pump control with override equalizes pump wear
- UL/cUL Listed



Model 32XR

Three Phase Duplex

- Designed to alternately control two 208/230/460V three phase pumps in commercial and industrial water and wastewater applications
- TYPE 4X fiberglass enclosure
- LCX3 Controller sequences pump on and off in response to a change in level input provided by a 4-20 mA sensor
- UL/cUL Listed



Intrinsically Safe

Intrinsically safe Build-A-Panel™ control panels are designed for applications requiring **intrinsically safe float circuits or other circuit extensions.**

SJE-Rhombus has secured an Underwriters Laboratory (UL) dual safety certification for Canada and the United States, **cUL/US Listing**, on control panels with intrinsically safe circuits.

Common applications for intrinsically safe panels include pump chambers, lift stations, and other applications classified as hazardous locations requiring intrinsically safe circuits.

- Single Phase Simplex I.S. (114)
- Single Phase Duplex I.S. (124)
- Three Phase Simplex I.S. (314)
- Three Phase Duplex I.S. (324)

Industrial Grade Three Phase Duplex



Capacitor Start/Run

SJE-Rhombus offers motor control panels designed specifically for grinder pump applications or other pumps requiring **external motor starter kits**. Common applications include pump chambers and lift stations. UL/cUL Listed.

- Single Phase Simplex (113)
- Single Phase Duplex (123)

Model 113 Single Phase Simplex

- Provides a reliable means of controlling one 120/208/240V single phase pump requiring external starting components
- NEMA 4X rated enclosure
- Capacitor start/run pump control
- UL/cUL Listed



Model 123 Single Phase Duplex

- Provides a reliable means of controlling two alternating 120/208/240V pumps requiring external starting components
- NEMA 4X enclosure
- Capacitor start/run pump control with override
- UL/cUL Listed



Timed Dose

For systems requiring a timed dose (sand filter, pressure distribution, mound systems, etc.). Timed dosing control panels feature a **programmable timer** which activates the magnetic motor contactors to turn the pump(s) on and off. UL/cUL Listed.

- Single Phase Simplex (TD)
- Single Phase Simplex and Duplex - Sand Filter (PS11,PS12)

Model TD Single Phase Simplex

- Designed to control one 120/208/240V single phase pump in timed dose applications
- NEMA 4X enclosure
- Programmable timer/motor contactor control with override
- UL/cUL Listed



PS11/PS12 Single Phase

- Provides reliable means of controlling both pump chamber and sand filter pumps in an onsite septic installation
- Two independent motor contactor control/programmable timed dosing control panel
- NEMA 4X enclosure
- PS11 (120V) PS12 (240V)
- UL/cUL Listed



SJE Oil Spotter™ System

- Designed to control one single phase pump used to remove water from elevator pits while preventing oil from being pumped into the environment; features innovative factory-installed Oil Water Switch; receptacle accepts 120V pump plug
- NEMA 1 enclosure for indoor use
- UL/cUL Listed, ASME A17.1 Compliant



SJE Oil Spotter™ Auto System

- Designed to control one single phase pump used to remove water from elevator pits while preventing oil from being pumped into the environment; features innovative factory-installed Oil Water Switch; receptacle accepts 120V pump plug
- Includes an Auto/Hand pump switch
- NEMA 1 enclosure for indoor use
- UL/cUL Listed, ASME A17.1 Compliant



Elevator Oil Detection Products

Oil detection products provide pump control and alarm notification of potentially threatening water and oil levels in simple pumping applications.

- SJE Oil Spotter™ System
- SJE Oil Spotter™ Auto System



Select Start™ Starter Boxes Three Phase Motor Control

- Field select voltage: 208V, 240V or 480V
- Indoor/outdoor enclosure
- Self protected combination motor controller turns motor on/off
- Adjustable motor overload covers wide amp range
- Optional through door pump disconnect
- UL/cUL Listed



VARIOspeed® N1 Constant Pressure Control

- NEMA 1 indoor enclosure
- Factory pre-programmed variable frequency drive
- Available HP range (208V-240V) 1.5-20 HP; (480V) 7.5-20 HP
- 4 line/20 character back-lit LCD display
- Includes pressure transducer
- UL/cUL Listed



VARIOspeed® 3R Constant Pressure Control

- NEMA 3R indoor/outdoor enclosure
- Factory pre-programmed variable frequency drive
- Available HP range (208V-240V) 1.5-20 HP; (480V) 7.5-20 HP
- 4 line/20 character back-lit LCD display
- Includes pressure transducer
- Includes fan and thermostat on 7.5-20 HP models
- UL/cUL Listed



Constant Pressure Controls

VARIOspeed® series of constant pressure controls are an economical, pre-engineered solution for variable speed pumping controls including:

- Submersible deep well pumps
- Booster pumps
- Irrigation pumps

The controls are designed using a single factory-programmed VFD in a NEMA 1 or NEMA 3R enclosure with user friendly keypad and display for easy installation and setup.



Plugger Products

Plugger products feature a receptacle to accept a 120/230V pump plug and/or a piggy-back plug for typical pumping station applications.

- ▀ JB Plugger System
- ▀ Ultra Nator™ System
- ▀ PS Patrol® System

JB Plugger System

- Easy-to-install junction box which provides a convenient location to connect all wiring required for pump station applications; features a receptacle to accept a 120/230V pump plug and/or a piggy-back pump switch
- NEMA 4X enclosure, hinged door
- UL/cUL Listed



Ultra Nator™ System

- Control/alarm system designed to control two single phase alternating pumps; features two receptacles for easy pump connections and factory-installed pump activation and alarm activation switches
- NEMA 1 enclosure for indoor use
- Audible and visual alarm
- UL/cUL Listed



PS Patrol® System

- Enhanced design features a sleek, angled removable clear cover for easy access field wiring
- Red LEDs illuminate top of cover in alarm condition for 360° visual
- Receptacle for connection of pump and piggy-back pump switch
- Includes cord seal
- Pedestal rated for outdoor use
- Available with or without mounting post
- CSA Certified



Model 126 Single Phase Duplex

- Designed to alternately control two 120/208/240V single phase pumps in water well applications; provides override control to maintain pressure
- NEMA 1 or NEMA 4X enclosure
- Available with contactors or without contactors
- UL/cUL Listed



Water Well

With duplex alternation between two wells, this system provides override control to **maintain system pressure** upon high demand or should either pump fail in water well applications.



MySpy® WiFi Messenger Alarm

- Easy-to-install indoor alarm with WiFi connectivity, remote notification, battery backup and auto reset. Notifies the user locally (audible/visual alarm) and remotely via SMS text messages and/or emails over a WiFi or Ethernet network to a smartphone, tablet or computer
- NEMA 1 rated for indoor use
- UL Listed; CSA Certified



Tank Alert® AB Alarm

- The Tank Alert® AB indoor alarm offers auto reset and battery backup features. The horn sounds when a potentially threatening liquid level occurs
- NEMA 1 rated for indoor use
- Red alarm light, green power light, alarm test switch, horn silence switch
- UL Listed; CSA Certified



Tank Alert® AB DUO Alarm

- Indoor DUO alarm system monitors two levels conditions
- NEMA 1 rated for indoor use
- Alarm test switch, horn silence switch
- LED indicator lights (red - alarm 1; yellow - alarm 2; green power on)
- Battery backup
- CSA Certified



Tank Alert® I Alarm

- The Tank Alert® I indoor alarm sounds when a potentially threatening liquid level occurs. Alarm (when installed on separate circuit) operates even if pump circuit fails
- NEMA 1 rated for indoor use
- Red alarm light, green power light, alarm test switch, horn silence switch
- UL Listed; CSA Certified



Tank Alert® EZ Alarm

- Tank Alert® EZ indoor/outdoor alarm features removable cover for easy installation
- Sleek, innovative design features a distinct 2-color molded enclosure
- Integrated LED beacon
- External mounting tabs
- Alarm test/silence switch
- DUO models available
- CSA Certified



Tank Alert® XT Alarm

- The Tank Alert® XT indoor/outdoor alarm meets NEC standards for junction boxes. OPTION: Pre-mounted terminal block so enclosure can be used as junction box for cord splices
- Rain-tight outdoor enclosure
- Automatic alarm reset, horn silence switch, alarm test switch
- UL Listed; CSA Certified



Tank Alert® 4X Alarm

- The Tank Alert® 4X indoor/outdoor alarm sounds when a potentially threatening liquid level condition occurs
- NEMA 4X enclosure
- Automatic alarm reset, alarm test/normal/silence switch
- Optional auxiliary alarm contacts
- UL/cUL Listed



Tank Alert® Alarms

Tank Alert® liquid level alarms visually and audibly warn of threatening liquid level conditions in lift pump chambers, sump pump basins, holding tanks, sewage and non-potable water applications. Each alarm can serve as either a high or low level alarm, depending upon the float switch model used.

- MySpy® WiFi Messenger Alarm
- Tank Alert® AB Alarm
- Tank Alert® AB DUO Alarm
- Tank Alert® I Alarm
- Tank Alert® EZ Alarm
- Tank Alert® XT Alarm
- Tank Alert® 4X Alarm

The Tank Alert® AB, XT and 4X alarms offer **optional auxiliary alarm contacts** for easy attachment of remove devices.

MySpy™ WiFi Messenger

- ✓ Peace of Mind 24/7
- ✓ WiFi Monitoring
- ✓ Email/Text Notifications
- ✓ No Monthly Fees
- ✓ Battery Backup



**C-Level™
FLOATLESS
Sensor**

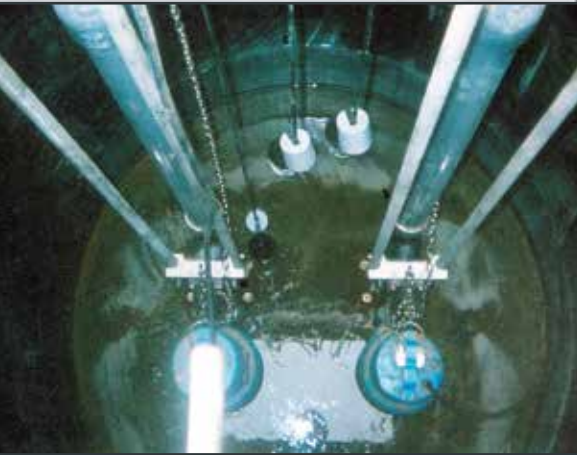
U.S. Patent No.
8,336,385 and 8,567,242.
Additional Patents Pending.

Level Monitoring

Level monitoring products utilizes the new, **innovative floatless technology** of the C-Level™ sensor for continuous level monitoring in on-site applications.

The C-Level™ Sensor:

- Uses pressure to detect level in tank
- Compact design; low voltage
- Easy to adjust set points
- One sensor replaces up to 4 floats
- Options available include 4' or 8' vent tube with 20' or 40' wire
- CL 40 (range up to 40 inches) or CL 100 (range up to 100 inches) models available



Accessories

SJE-Rhombus provides a wide variety of accessories to complete any on-site water and wastewater installation.

Home Protection

In addition to on-site accessories, home protection products offer homeowners added peace of mind. The auto dialer and home temperature monitor provide notification of threatening conditions, such as high liquid level or low temperature.

C-Con™ Converter Box

- Allows most control panels to utilize floatless C-Level™ sensor
- NEMA 1 rated for indoor use
- Can be mounted inside a panel
- Green power on indicator
- Four adjustable output set points with red LED status indicators
- Adjust pump start/stop and alarm levels from converter box
- Simulate button for testing proper wiring of outputs
- Factory-installed input/output wires
- Alternative to mercury switches
- UL/cUL Listed



Available with CL40 model only.

SJE Level Monitor™ CL

- Monitors tank levels using floatless C-Level™ sensor
- NEMA 1 rated for indoor use
- Power on and alarm indicators
- 10 segment LED bar graph displays level in the tank
- Test/silence, alarm level and set buttons
- Various cable lengths to monitor tanks up to 300 feet away
- Auxiliary contacts for Class II circuits



Float Accessories

- Cable Clamp Assembly provides strain relief and anchor of cables
- Float Brackets (4-6 floats) for installation of float switches
- Pipe Mounting Bracket to secure discharge pipe to basin wall
- Cable Weight/Cable Weight Mini provide pivot point for floats
- ETM records total pump run time
- Vertical Reed Switch is alternate control switch for specific needs
- Anchor and Chain for suspended float switch installations



Control Panel Accessories

- Junction Boxes provide convenient location to connect and protect wiring
- Cord Seal provides strain relief and a liquid-tight seal for 1-4 or 1-6 cables
- Cable Connectors (round or flat) for liquid-tight seal and strain relief
- Hub Assembly provides liquid-tight conduit attachment location
- Panel Mounting Post provides easy installation of control panels
- Riser Mounting Kit secures panel mounting post to tank riser
- Simplex/Duplex Installation Kit provides easy weather-proof wire installation for control panels
- C-Level™ Simulator is designed to generate an adjustable C-Level simulation signal
- 4-20mA Simulator is designed to generate an adjustable 4-20mA signal from loop power



Home Protection Products

- Auto Dialer is a single channel voice dialer that delivers recorded message to warn of potentially threatening condition
- Home Temperature Monitor switch provides a means to monitor environmental temperature.



Pump Switches

Wide-angle pump switches directly control pumps up to 3 HP at 250 VAC. Each switch features an adjustable pumping range.

Control Switches

Narrow-angle control switches accurately monitor high (normally open) or low (normally closed) liquid level conditions in water and sewage applications to activate control panels and alarms. Select models have colored caps for easy identification.



Pump Switch	Type of Activation	Pump Control	Max Pump Run Current	Max Pump Start Current	Pumping Range
SJE PumpMaster® WPS	Mechanical	1/2 HP, 120V 1 HP, 230V min load: 120V, 100 mA	13A, 120V 13A, 230V	85A, 120V 85A, 230V	7 to 36 inches
SJE PumpMaster®	Mechanical	1/2 HP, 120V 1 HP, 230V	13A, 120V 13A, 230V	85A, 120V 85A, 230V	7 to 36 inches
SJE PumpMaster® Plus	Mechanical	3/4 HP, 120V 2 HP, 230V	15A, 120V 15A, 230V	85A, 120V 85A, 230V	7 to 36 inches
SJE PumpMaster® SPDT (Single Pole, Double Throw)	Mechanical	1/2 HP, 120V 1 HP, 230V	13A, 120V 13A, 230V	85A, 120V 85A, 230V	7 to 36 inches
Double Float® Master	Mechanical	15 FLA, 90 LRA 120 or 240V	15A, 120V 15A, 240V	90A, 120V 90A, 240V	4 to 48 inches (wider available)
SJE AmpMaster®	Mechanical	1 1/2 HP, 120V 3 HP, 250V	20A, 125V 20A, 250V	120A, 125V 120A, 250V	9 to 24 inches
SJE VerticalMaster® (For Limited Space Applications)	Mechanical	1/2 HP, 120V 1 HP, 230V	13A, 120V 12A, 230V	60A, 120V 60A, 230V	.75 to 6.5 inches
SJE MicroMaster® AC/DC	Mechanical	Use pump run and start current	10A, 12VDC/125VAC 8A, 250VAC	100A, 12VDC 60A, 125V/250V	8 to 36 inches
SJE MicroMaster® Plus WS	Mechanical	Use pump run and start current	13A, 125V 13A, 250V	78A, 125V 78A, 250V	8 to 36 inches
Junior Super Single®	Mercury	1/2 HP, 120V 1 HP, 230V	13A, 120V 8A, 230V	40A, 120V 20A, 230V	6.5 to 19 inches
Super Single®	Mercury	1 HP, 120V 2 HP, 230V	15A, 120V 12A, 230V	55A, 120V 35A, 230V	6.5 to 13.5 inches
Double Float®	Mercury	1 HP, 120V 2 HP, 230V	15A, 120V 12A, 230V	55A, 120V 35A, 230V	1.75 to 48 inches (wider available)
SJE HiTempMaster™	Mechanical	Use pump run and start current	13A, 120V 13A, 230V	78A, 125V 78A, 250V	8 to 36 inches

Control Switch	Type of Activation	Control Differential	Electrical Rating	Mounting Options
EZconnex® Float Connection System	Mechanical	Narrow 1.5 inches; Wide 4 inches above or below horizontal	125 VAC/30 VDC 0.160mA-1A; 5VDC 1mA min.	Mounting clamp
SJE MegaMaster®	Mechanical	Approximately 10° above or below horizontal	1 mA - 1 amp 4VDC - 125VAC	Float Bracket
SJE SignalMaster® (NO - Yellow Cap; NC - White Cap)	Mechanical	Approximately 1.5 inches above or below horizontal	5 amp 125V or 250V	Mounting clamp or cable weight
SJE SignalMaster® SPDT (Single Pole, Double Throw; Green Cap)	Mechanical	Approximately 1.5 inches above or below horizontal	5 amp 125V or 250V	Mounting clamp or cable weight
SJE MilliAmpMaster® (Narrow-Angle or Wide-Angle; Blue Cap)	Mechanical	Narrow 1.5 inches; Wide 4 inches above or below horizontal	0.160 - 100 mA 5V - 125V	Mounting clamp or cable weight
Sensor Float®	Mercury	Approximately .5 inches above or below horizontal	5 amp 120V or 230V	Mounting clamp, cable weight, internal weight
Sensor Float® Mini	Mercury	Approximately .5 inches above or below horizontal	5 amp 120V or 230V	Mounting clamp or cable weight



About SJE-Rhombus®

SJE-Rhombus provides **smart control solutions** for today's growing environmental challenges. We combine over **40 years of expertise** in pump controls with the **latest technology** to deliver **energy efficient, cost-effect products** for a wide variety of residential, commercial, municipal and industrial applications.

No matter the application, SJE-Rhombus has a control solution to fit your needs, whether it's a simple float switch or septic tank alarm to control panels utilizing embedded circuit board technology for advanced programming, monitoring and reporting of your system. And if we don't have it in our standard catalog, we can design and build a **custom control solution** to meet your exact specifications.

New product designs endure extensive in-house and field testing before submittal to recognized independent laboratories for safety testing and approval (UL, cUL, CSA). This commitment to quality ensures you a dependable, trouble-free product. We are so confident in our products that we offer an industry-leading **five-year limited warranty**.

With corporate headquarters located in central Minnesota, SJE-Rhombus has eight locations across the USA and Asia. Because SJE-Rhombus is **100% employee-owned**, each employee has a **personal stake** in the success of the company. From engineering to production to customer service, each and every employee-owner takes **great pride** in providing the quality products and service that SJE-Rhombus offers. After all, **our success is measured by your satisfaction**.

SJE-Rhombus offers the **best one-on-one customer support** in the industry. Our **friendly, knowledgeable staff** is prepared to answer any questions, from assisting in selecting the correct product for the application to answering installation questions in the field. Learn more about us at www.sjrhombus.com.



22650 County Highway 6, PO Box 1708
Detroit Lakes, MN 56502 USA
Toll Free: 1-888-DIAL-SJE (1-888-342-5753)
Phone: 218-847-1317
Fax: 218-847-4617
Email: sje@sjrhombus.com
www.sjrhombus.com

Follow us on:



In addition to many state on-site and rural water associations, SJE-Rhombus® is proud to be members of these national industry associations:

