

BAY AREA

WHOLESALE LUMBER



(510) 783-8500 • bayarealumber@yahoo.com

EXTERIOR / INTERIOR WALLS, CEILINGS AND SOFFITS

Western Red Cedar



**Clear C & Better
All Patterns Kiln Dried**

1x4	2.86 / lin ft
1x6	5.63 / lin ft
1x8	7.53 / lin ft



**Clear A Vertical Grain
All Patterns Kiln Dried**

1x4	3.59 / lin ft
1x6	6.83 / lin ft
1x8	8.87 / lin ft

*Prices are for orders of 1350 square feet of coverage.
For larger or smaller orders, call for a quote.*

BAY AREA

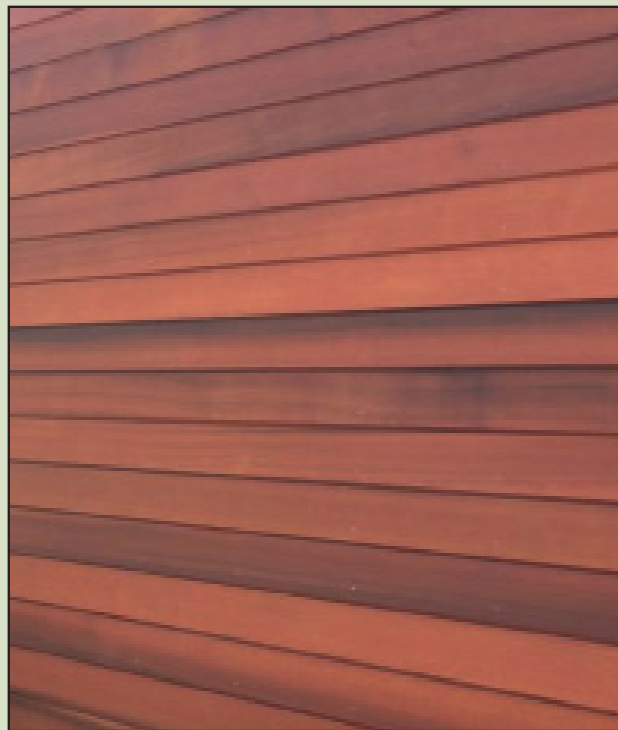
WHOLESALE LUMBER



(510) 783-8500 • bayarealumber@yahoo.com

EXTERIOR / INTERIOR WALLS, CEILINGS AND SOFFITS

Redwood



Clear A No Knots Kiln Dried:

1x4, 1x6, 1x8, 1x10, 1x12

B-Grade Small Knots Kiln Dried:

1x4, 1x6, 1x8, 1x10, 1x12

Call for a quote.

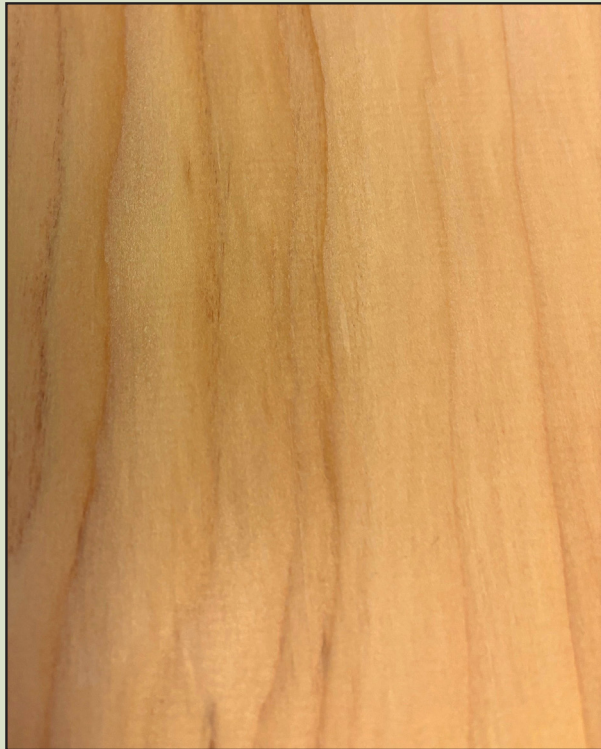
BAY AREA

WHOLESALE LUMBER



(510) 783-8500 • bayarealumber@yahoo.com

Hemlock



**Clear C and Better
Mixed Grain Kiln Dried**

1x6 2.33 / lin ft



**Clear C and Better
Vertical Grain Kiln Dried**

1x4 1.88 / lin ft

1x6 4.10 / lin ft

Prices are for orders of 900 to 1400 square feet of coverage.

For larger orders, call for an even lower price!

Prices for 500 to 899 square feet orders, call for a quote.

BAY AREA

WHOLESALE LUMBER



(510) 783-8500 • bayarealumber@yahoo.com

EXTERIOR / INTERIOR WALLS, CEILINGS AND SOFFITS

Alaskan Yellow Cedar



Clear C & Better Mixed Grain Kiln Dried

1x4, 1x6, 1x8

Call for a quote.