

Steel Detailing Case Study

Project: Steel Detailing for the Construction of a Commercial Office Building in London, UK.

Client: XYZ Construction Ltd.

Overview: XYZ Construction Ltd. has undertaken a significant construction project in London, UK. They are building a state-of-the-art commercial office building in the heart of the city to meet the growing demand for office space. This case study focuses on the steel detailing aspect of the project.

Project Scope: The scope of this steel detailing project includes the design and detailing of structural steel components that will form the skeleton of the office building. The building will have 12 floors and a basement parking facility, and the steel structure is critical to its stability and functionality.

Key Challenges:

1. **Design Compliance:** Ensuring that the steel detailing complies with all relevant UK building codes and standards, including British Standards for structural steelwork.
2. **Architectural Integration:** Coordinating steel detailing with the architectural design to ensure seamless integration and aesthetic appeal.
3. **Site Constraints:** Managing logistical challenges due to limited space and access restrictions at the construction site in a densely populated area of London.
4. **Material Selection:** Choosing appropriate steel materials that are readily available in the UK market and meet quality and sustainability criteria.

Project Timeline:

- ▶ Design and Detailing Phase: 6 months
- ▶ Fabrication Phase: 8 months
- ▶ Construction Phase: 18 months

Steel Detailing Process:

- ▶ **Initial Assessment:** The steel detailing team conducts an initial assessment of the architectural plans and structural requirements.
- ▶ **Design Development:** Collaborating with architects and structural engineers to refine the steel structure design, ensuring it meets all safety and aesthetic criteria.
- ▶ **Detailing:** Using specialized software, the team creates detailed drawings, plans, and 3D models of the steel components, including beams, columns, and connections.
- ▶ **Quality Assurance:** Rigorous quality checks to ensure accuracy and compliance with UK standards.
- ▶ **Material Procurement:** Sourcing steel materials from local suppliers, taking into account factors like cost, quality, and sustainability.
- ▶ **Fabrication Support:** Providing detailed fabrication drawings to the steel fabrication contractor for the manufacturing of components.
- ▶ **Construction Support:** On-site support to ensure proper installation and alignment of steel components.

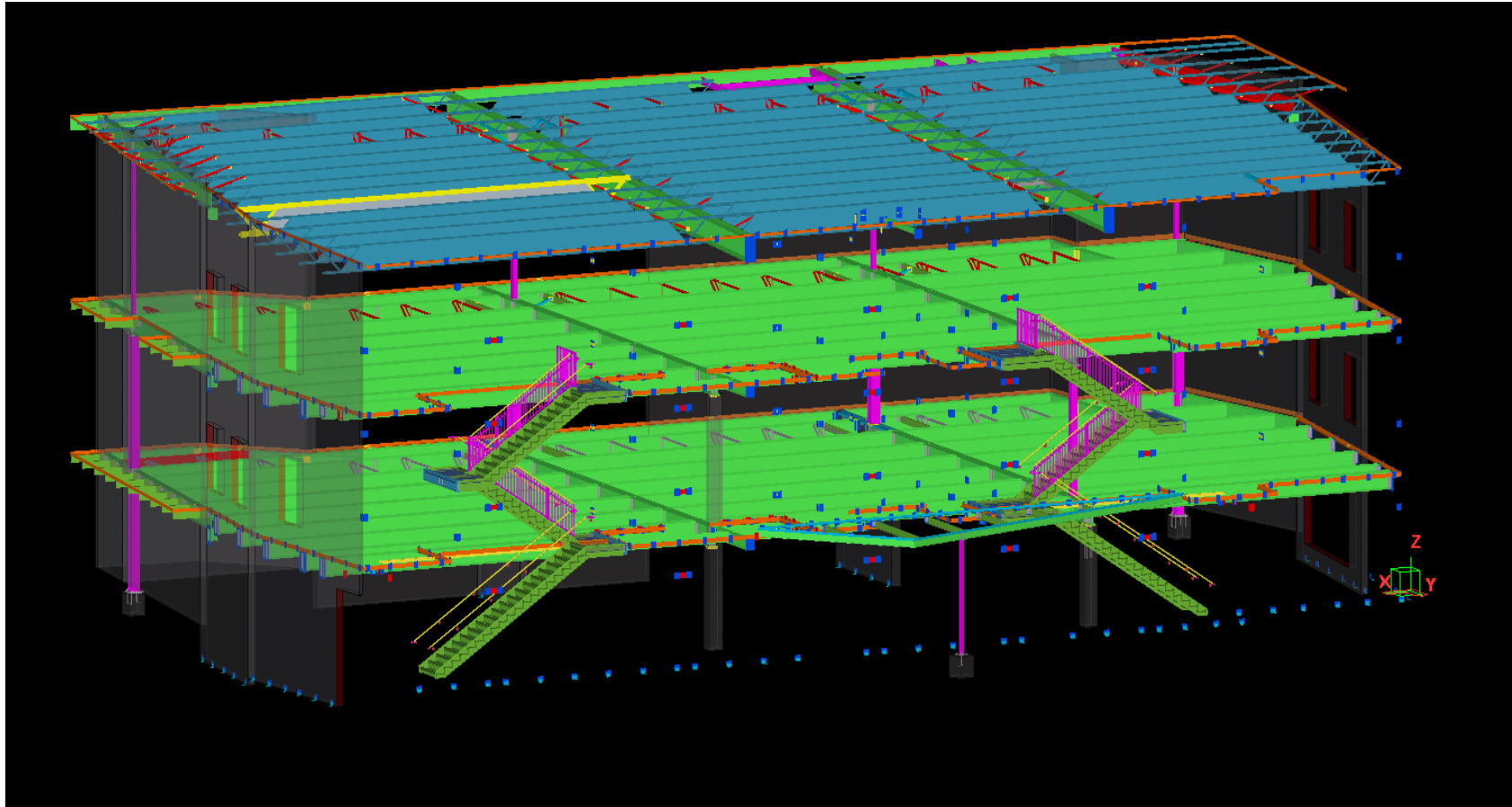
Results:

- ▶ **Structural Integrity:** The steel detailing process ensured that the building's structural integrity met all safety standards, contributing to its long-term durability.
- ▶ **On-time Delivery:** The steel detailing phase was completed on schedule, enabling seamless integration with the fabrication and construction phases.
- ▶ **Cost Efficiency:** By sourcing steel materials locally and optimizing the detailing process, cost overruns were minimized.
- ▶ **Aesthetically Pleasing:** The integration of steel detailing with the architectural design resulted in an aesthetically pleasing and modern office building.
- ▶ **Sustainability:** Careful material selection and adherence to sustainability standards contributed to the project's green credentials.

In conclusion, this case study highlights the importance of steel detailing in a large-scale construction project in the UK. Proper detailing not only ensures structural integrity but also contributes to cost-efficiency, aesthetics, and sustainability, all of which are crucial in the construction industry today.

Project Snapshot

Office Building - 110 tons



Thank you



Versatile Engineering

Prashanth Gopinath (Pat)
Chief Executive Officer
Email ID : Patwin@vcadglobal.com
Contact : +1 325-500-0751