

Lower Paxton Township Authority
Construction Traffic Update for Weeks of September 13 and September 20

1. Eastern Linglestown Area- Mini Basins BC-2A,2B,2C,5B

- **Project Location:** [See map](#)
- **Impacted Streets (this period):** Blue Ridge Avenue from Balthaser to Wenrich, Carmen Court, Emerald Lane, Locust Street between Blue Bell Avenue and Balthaser Street. Blue Bell Avenue between Locust Street and Catherine Street. Balthaser Street between Locust Street and Catherine Street.
- **Contractor(s):** DOLI Construction Corporation and Granite Inliner LLC
- **LPT Field Contact:** Eric Morgan (717-554-9052) or Tim Nolt (717-278-5423).
- **Nature of Work:** Sanitary sewer replacement, asphalt paving restoration, trenchless sewer lining, and yard restoration.
- **Paving:** Asphalt paving restoration will occur on Blue Ridge Avenue (driveways), Carmen Court and Emerald Lane.
- **Trenchless Sewer Lining:** Closures of Blue Ridge Avenue between Balthaser Street and Wenrich Street are anticipated during this period. Work will generally take place Monday through Friday from 9:00 am to 3:00 pm. A detour will be established by Granite. Granite will use flaggers for any work between Wenrich Street and Rowe Lane during this period. Granite will maintain access to properties and allow school buses and refuse trucks through the work zones.

2. Devonshire Area- Mini Basins BC-7A,7B,7C,7D,8C,8D

- **Project Location:** [See map](#)
- **Impacted Streets (this period):** Rabuck Drive
- **Contractor(s):** Lower Paxton Township I/I Crew.
- **LPT Field Contact:** Clint Kreiger (717-773-6340) or Jim Wetzel (717-554-9051).
- **Nature of Work:** Sanitary sewer testing, building sewer replacement.
- **Additional Notes:** Private sewer testing and replacement work will take place on Rabuck Drive from Meadowbrook Drive to Kenwood Avenue. All work will take place Monday through Friday from 6:30 am to 2:30 pm. The Crew will maintain access to properties on these roads and allow school buses and refuse trucks through the work zone.

3. Twin Lakes-Union Deposit Road- Mini Basin SC-2B

- **Project Location:** [See map](#)
- **Impacted Streets (this period):** Twin Lakes Drive, Hawthorn Road, Galion Street, Woodward Drive, Springtop Road, Sweetbrier Drive.
- **Contractor(s):** Granite Inliner LLC- Marra Services.
- **LPT Field Contact:** Eric Morgan (717-554-9052) or Tim Nolt (717-278-5423).
- **Nature of Work:** Sanitary sewer manhole lining
- **Additional Notes:** Lane restrictions and closures are anticipated on the roads above during this period. Work will generally take place Monday through Friday from 7:00 am to 4:00 pm. The Crew will maintain access to properties and allow school buses and refuse trucks through the work zone. Detours will be established for all closures.

Lower Paxton Township Authority
Construction Traffic Update for Weeks of September 13 and September 20

4. Non-Consent Order/Miscellaneous Sewer Rehabilitation

- **Project Location:** Lincoln Drive, Ridgeview Drive, Rodgers Avenue.
- **Impacted Streets (this period):** Lincoln Drive between Ridgeview Drive and Rodgers Avenue. Rodgers Drive between near its intersection with N. Johnson Street. Ridgeview Drive at its intersection with Stradford Drive.
- **Contractor(s):** DOLI Construction Corporation
- **LPT Field Contact:** Eric Morgan (717-554-9052) or Tim Nolt (717-278-5423).
- **Nature of Work:** Asphalt Paving
- **Additional Notes:**
 - DOLI plans to perform permanent asphalt paving in these areas on Monday September 13. A detour will be established as access could be limited at times.

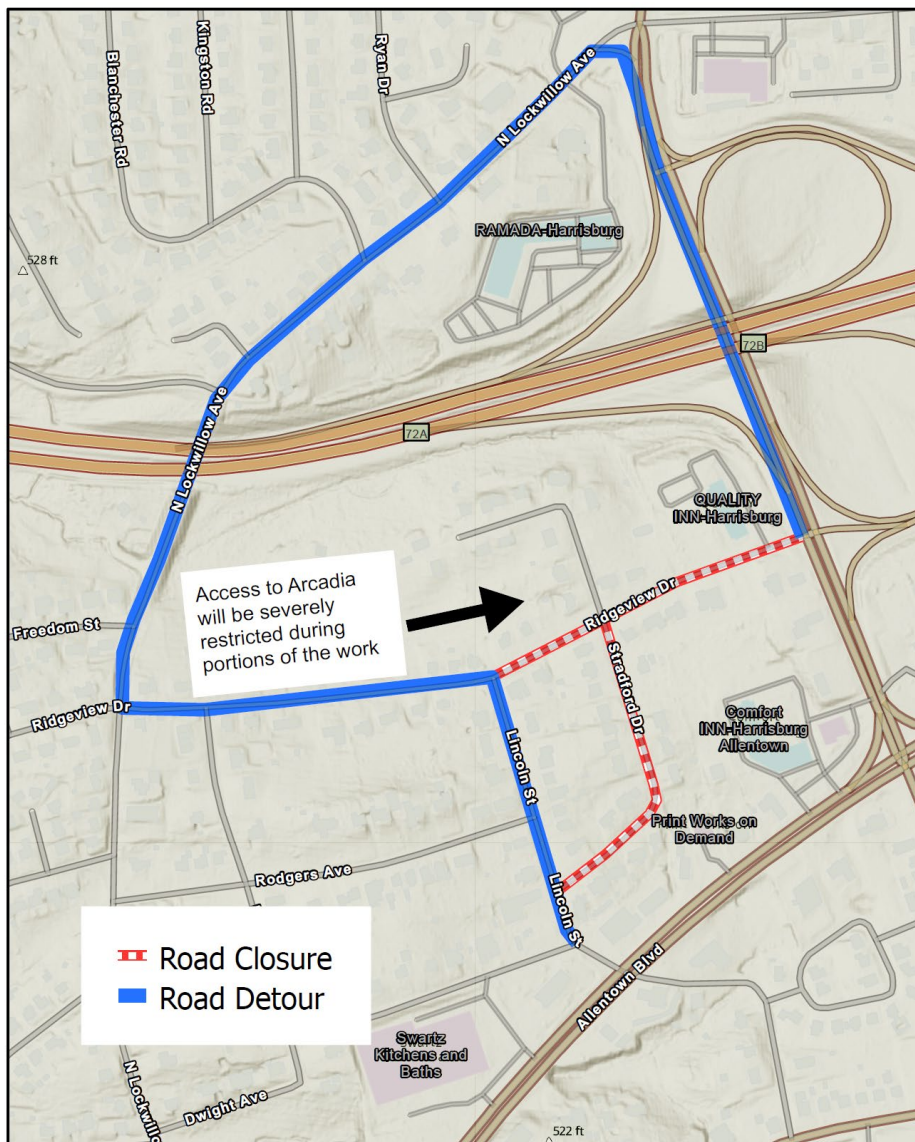


Figure 1: Ridgeview Drive Detour (Anticipated on September 13, 2021)

**Lower Paxton Township Authority
Construction Traffic Update for Weeks of September 13 and September 20**

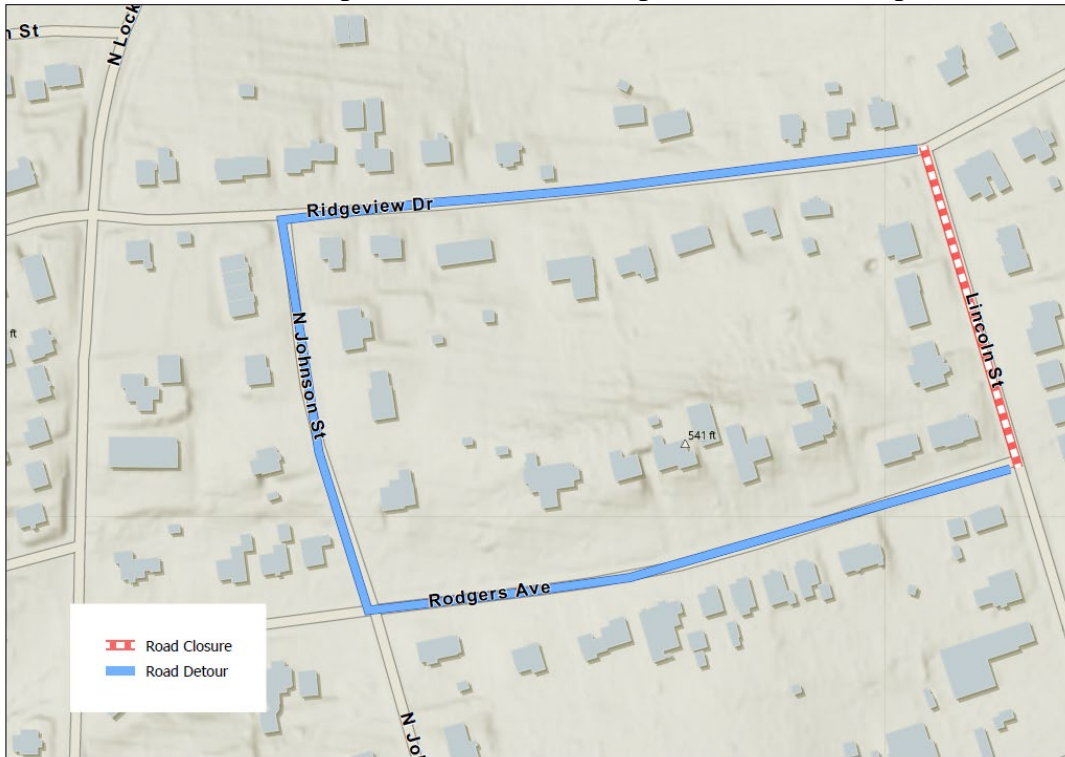


Figure 2: Lincoln Street Detour (Anticipated on September 13)

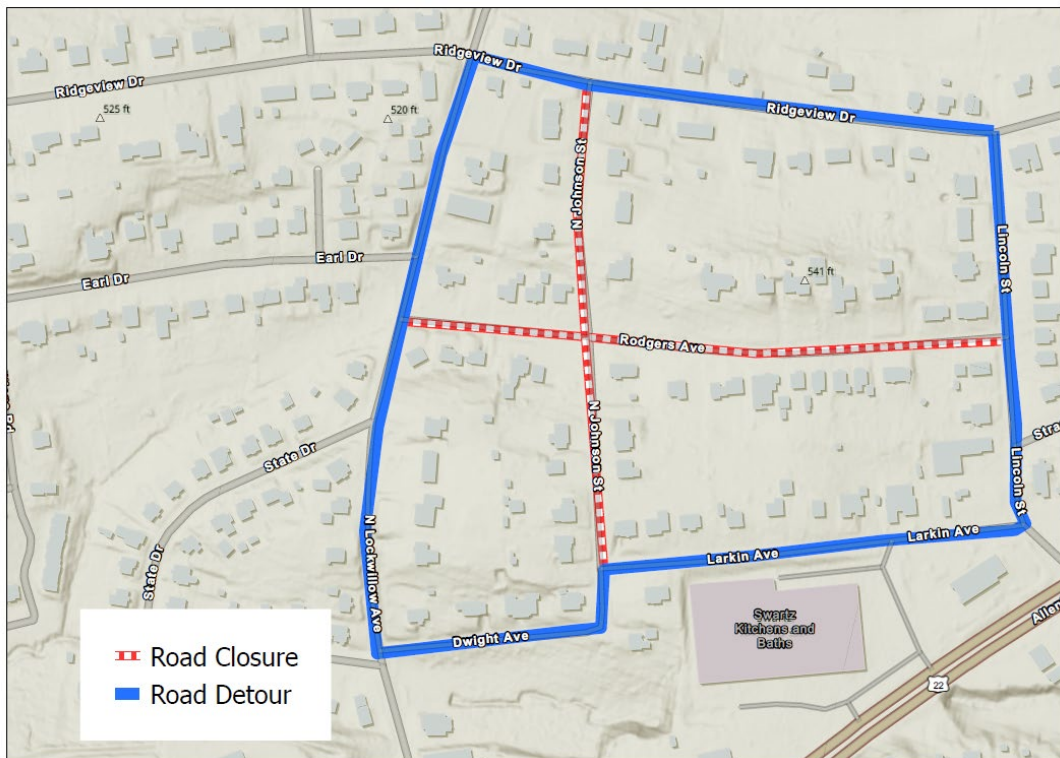


Figure 3: Rodgers Avenue Detour (Anticipated on September 13, 2021)