



ML
ARCHITECT

HOUSE A ILLUSTRATION

PROJECT:

**BLOCK 5/AREA 14, BLOCK 9/AREA 15
ATLAS WATERFRONT SECOND ADDITION**

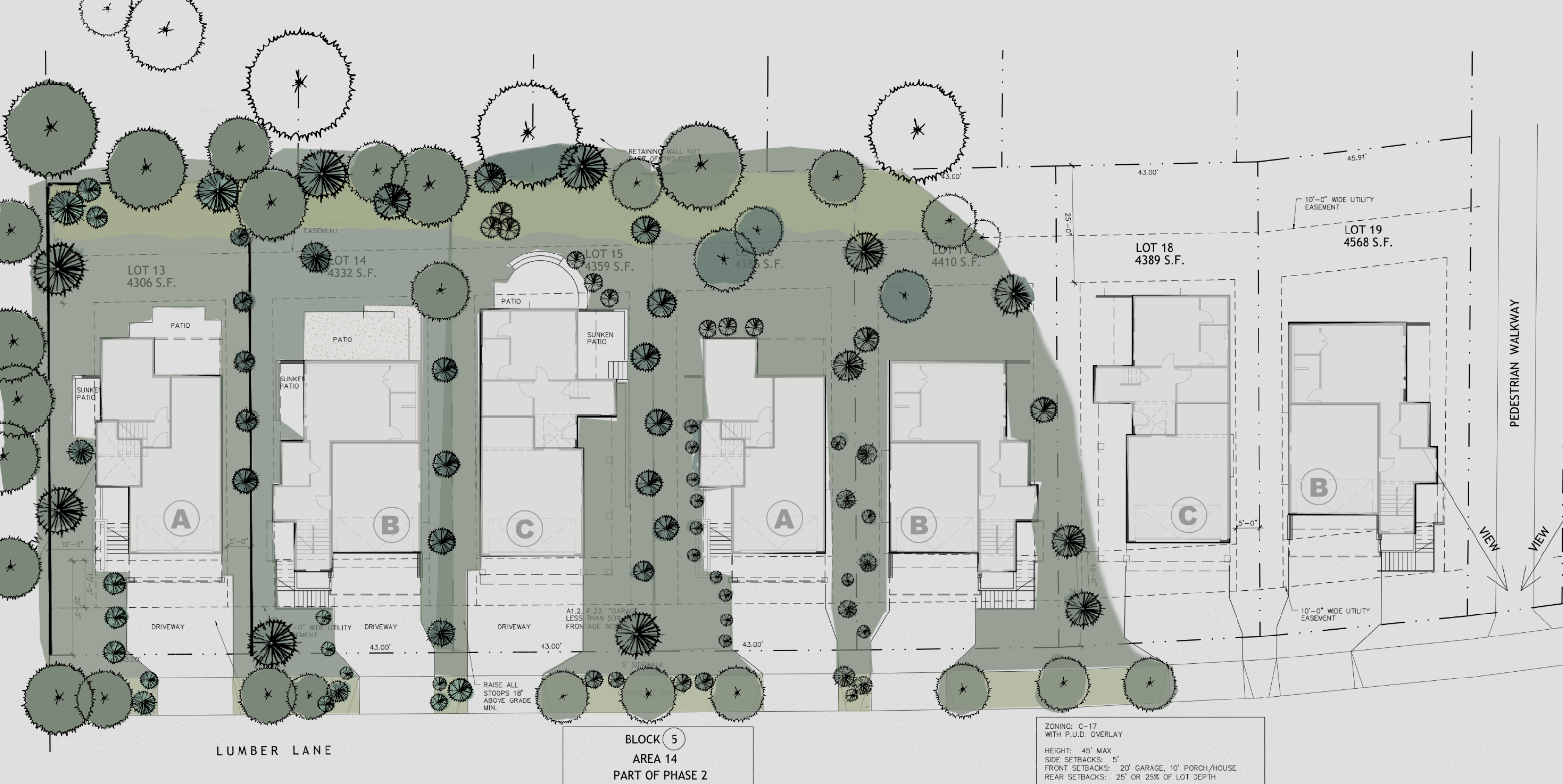
LUMBER LANE COEUR D'ALENE, IDAHO

PAGE:

Donald R Smock Development Company
DBA Harmony Homes LLC



607 E. 6th Avenue
Post Falls, Idaho 83854
PH: (208) 773 - 9864
mark@ml-architect.com



SITE PLAN - AREA 14, BLOCK 5

SCALE: 1" = 20'-0"



PROJECT:
**BLOCK 5/AREA 14, BLOCK 9/AREA 15
ATLAS WATERFRONT SECOND ADDITION**

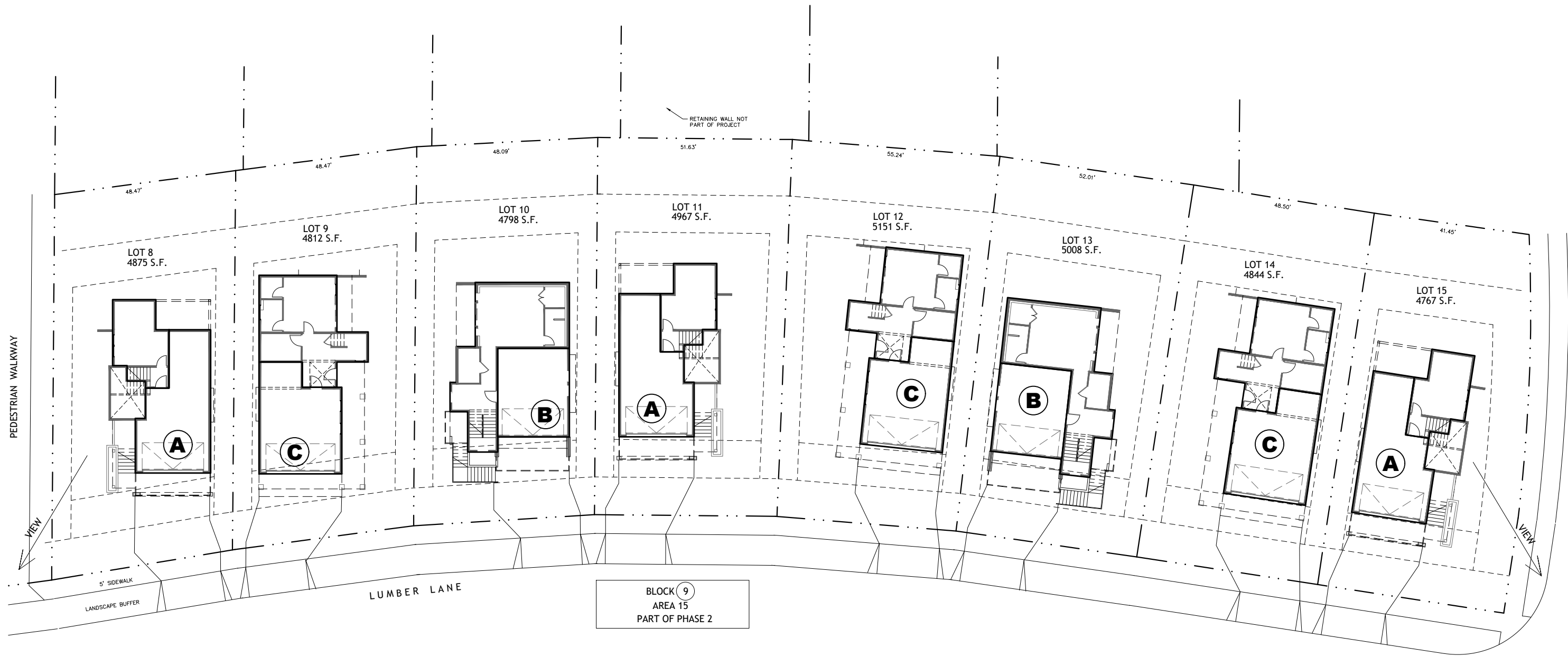
PAGE:

Donald R Smock Development Company
DBA Harmony Homes LLC



607 E. 6th Avenue
Post Falls, Idaho 83854
PH: (208) 773 - 9864
mark@ml-architect.com

LUMBER LANE COEUR D'ALENE, IDAHO



BLOCK 9
 AREA 15
 PART OF PHASE 2

SITE PLAN - AREA 15, BLOCK 9

NOT TO SCALE



PROJECT:

**BLOCK 5/AREA 14, BLOCK 9/AREA 15
 ATLAS WATERFRONT SECOND ADDITION**

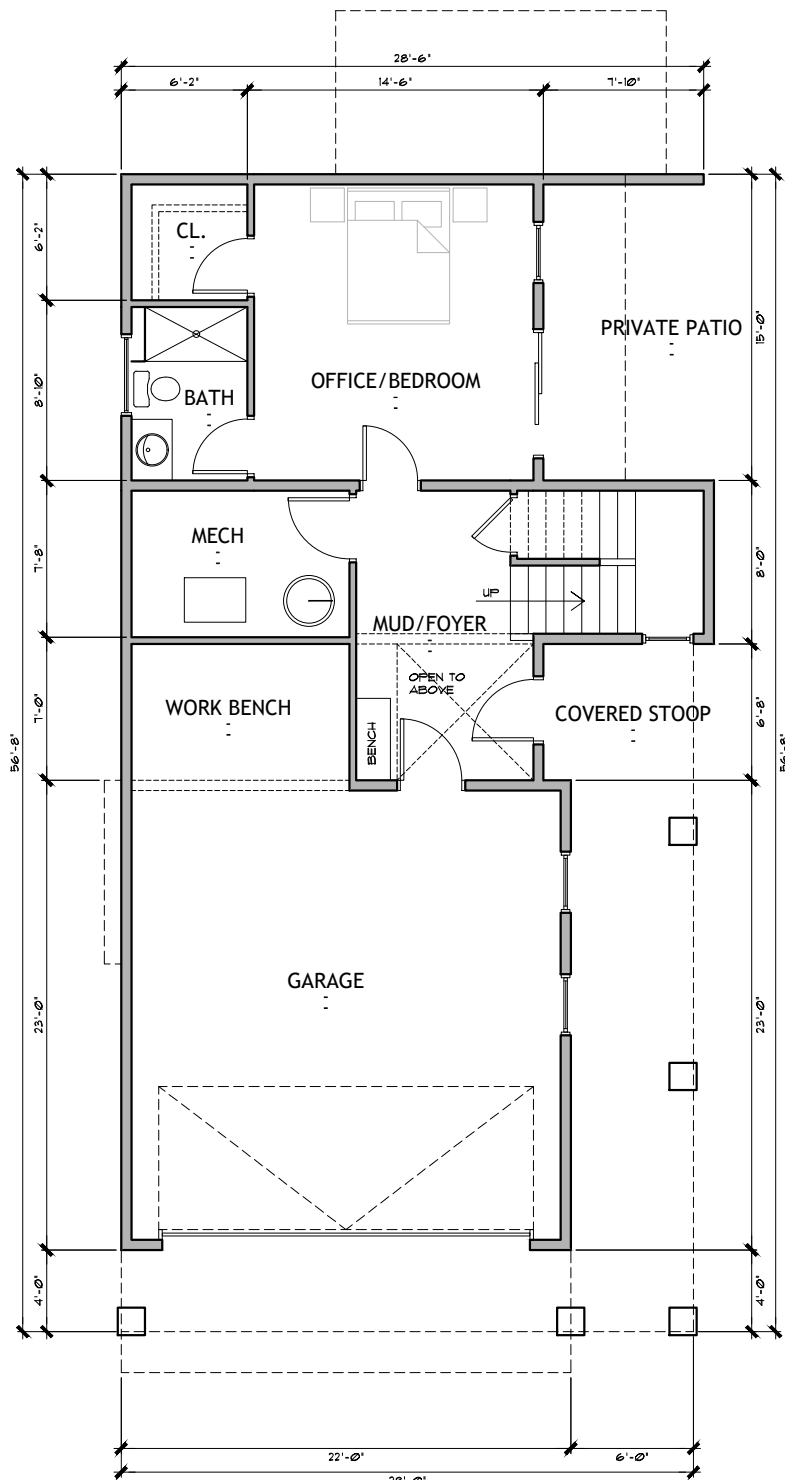
LUMBER LANE COEUR D'ALENE, IDAHO

PAGE:

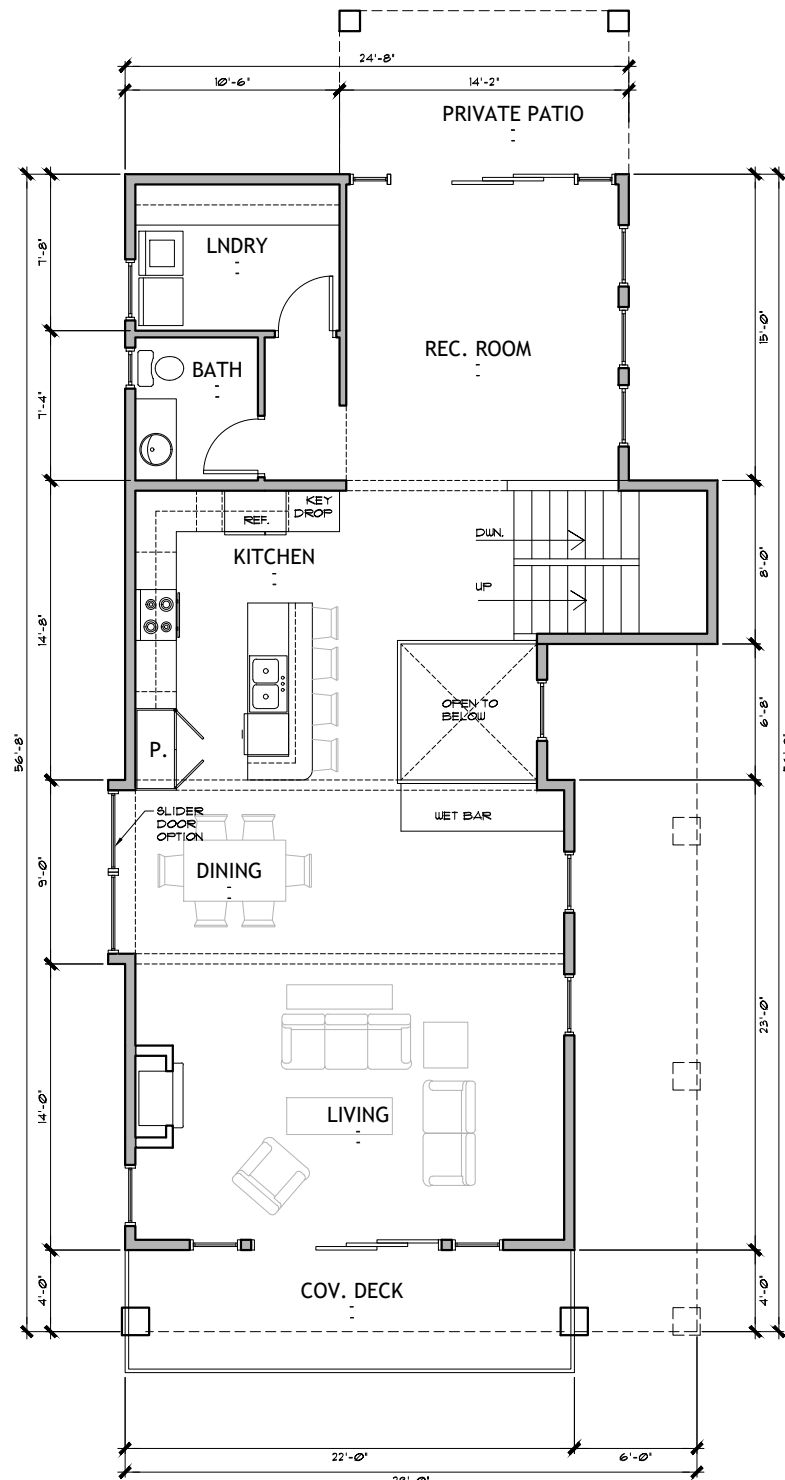
Donald R Smock Development Company
 DBA Harmony Homes LLC



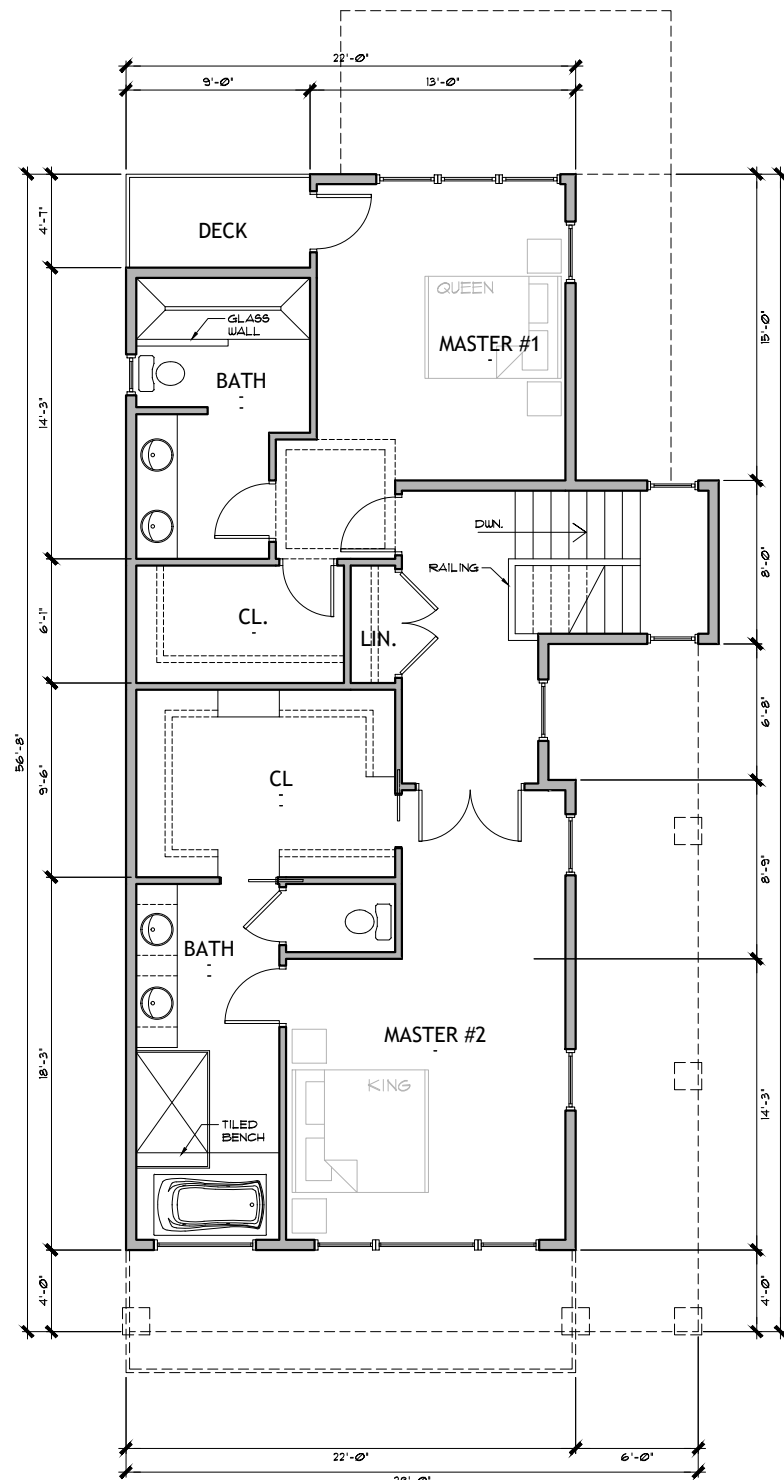
607 E. 6th Avenue
 Post Falls, Idaho 83854
 PH: (208) 773 - 9864
 mark@ml-architect.com



1 GROUND FLOOR PLAN
 SCALE: 1/4" = 1'-0"
 GARAGE: 582 SF.
 GROUND FLOOR: 603 SF.



2 MAIN FLOOR PLAN
 SCALE: 1/4" = 1'-0"
 MAIN FLOOR: 1205 SF.



3 SECOND FLOOR PLAN
 SCALE: 1/4" = 1'-0"
 SECOND FLOOR: 1081 SF.

PRELIMINARY - NOT FOR CONSTRUCTION

M L ARCHITECT
 ASSOCIATES
 607 E. 6th Avenue
 Post Falls, Idaho 83854
 PH: (208) 773-9864
 mark@ml-architect.com

PRELIMINARY
 LICENSED ARCHITECT
 No. 1722
 STATE OF IDAHO

PROJECT NUMBER: 22-57
 DATE: 12-22
 DRAWN:
 REVISIONS:

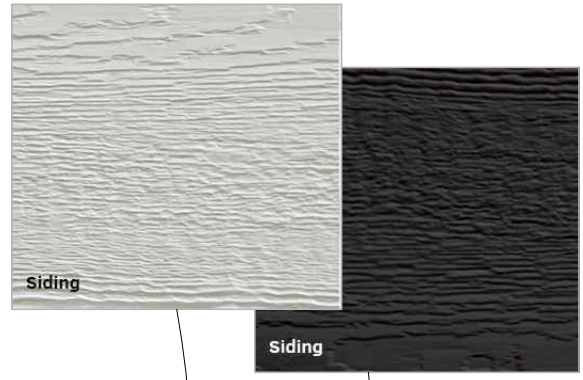
HOUSE PLAN A
 BLOCK 5/AREA 14, BLOCK 9/AREA 15
 ATLAS WATERFRONT SECOND ADDITION
 LUMBER LANE
 COEUR D'ALENE, IDAHO

FLOOR PLANS

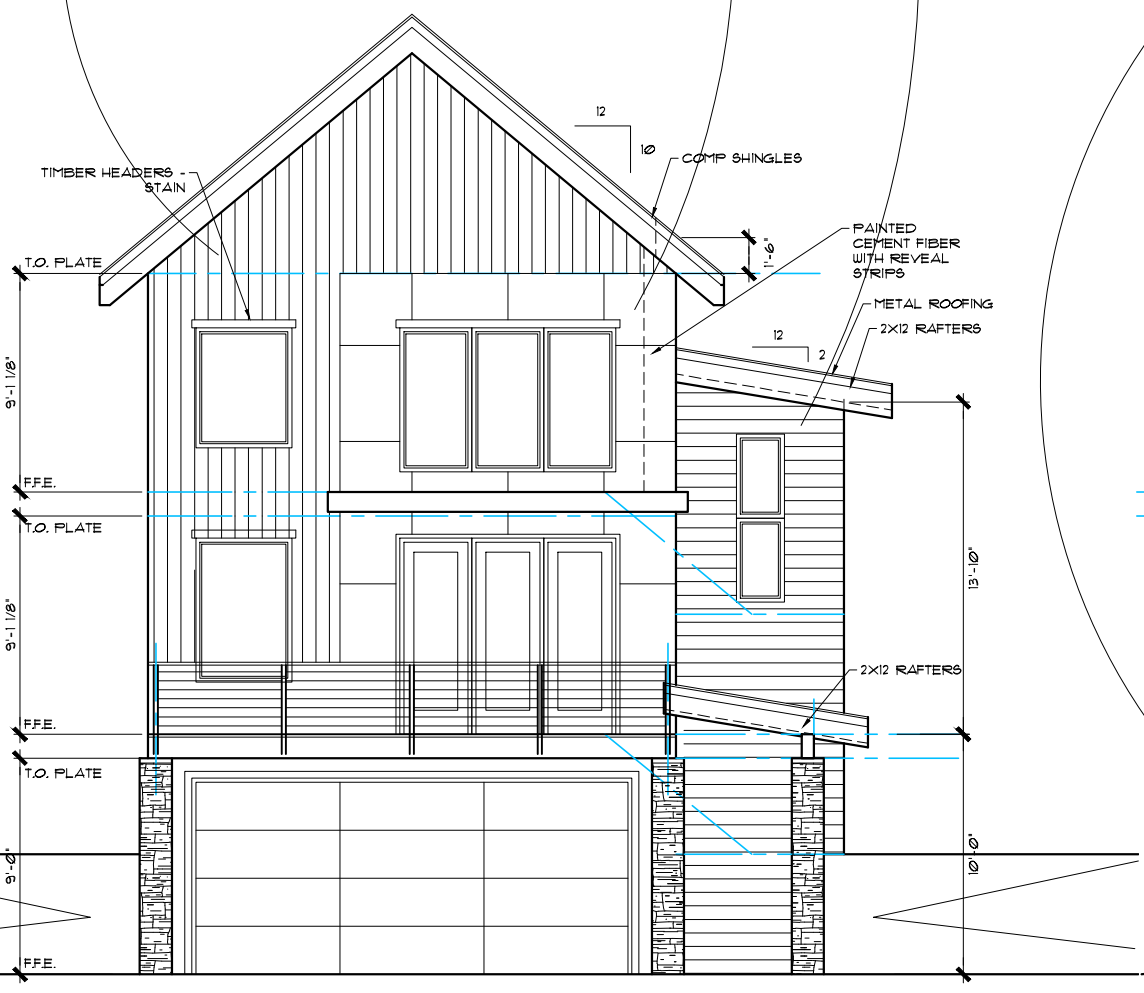
A2.1

COPYRIGHT 2022 ML ARCHITECT & ASSOCIATES

HOUSE PLAN A



EL DORADO SYNTHETIC STONE 'CUT ROCK'



FRONT ELEVATION
SCALE: 1/8" = 1'-0"



RIGHT SIDE ELEVATION
SCALE: 1/8" = 1'-0"

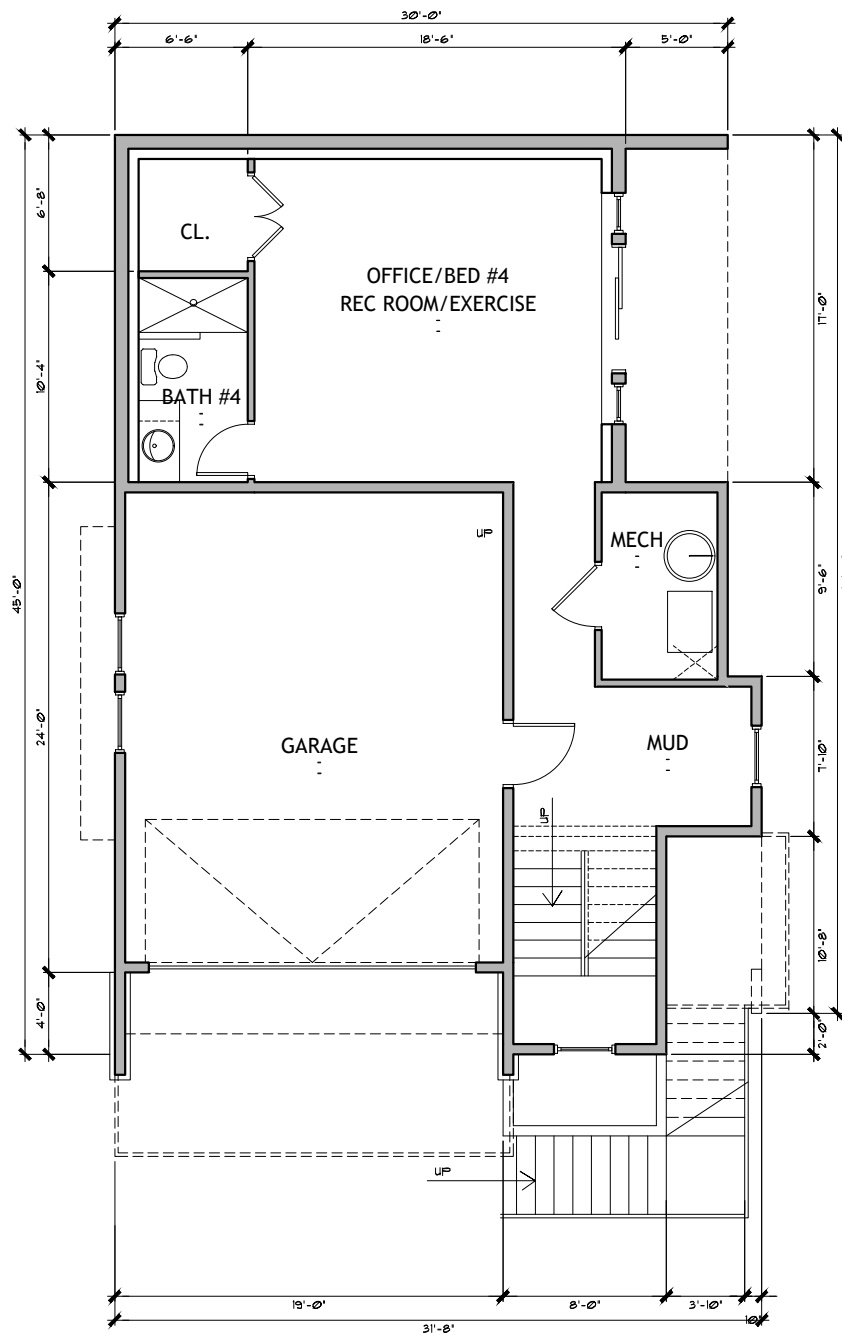
PROJECT:
BLOCK 5/AREA 14, BLOCK 9/AREA 15
ATLAS WATERFRONT SECOND ADDITION
 LUMBER LANE COEUR D'ALENE, IDAHO

PAGE:

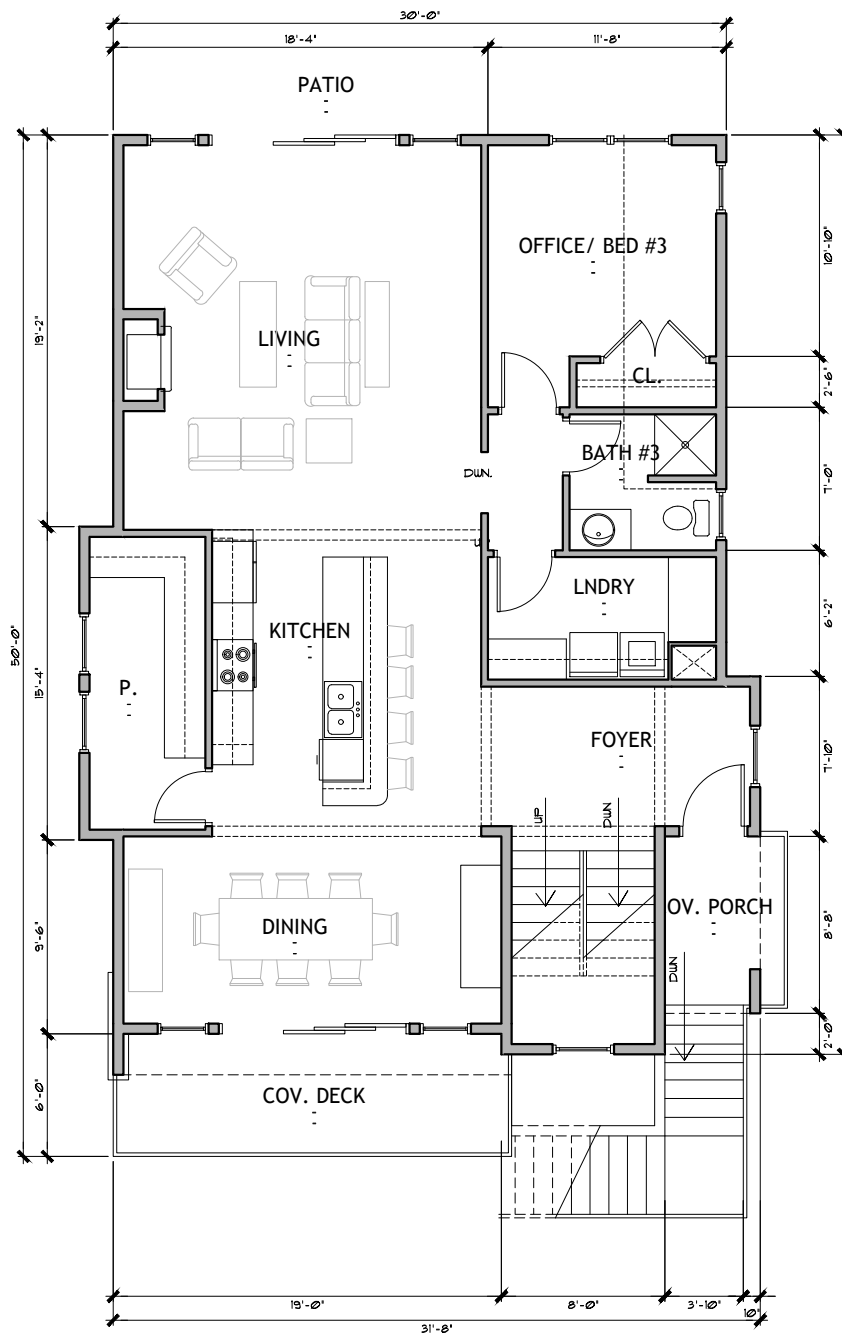
Donald R Smock Development Company
 DBA Harmony Homes LLC



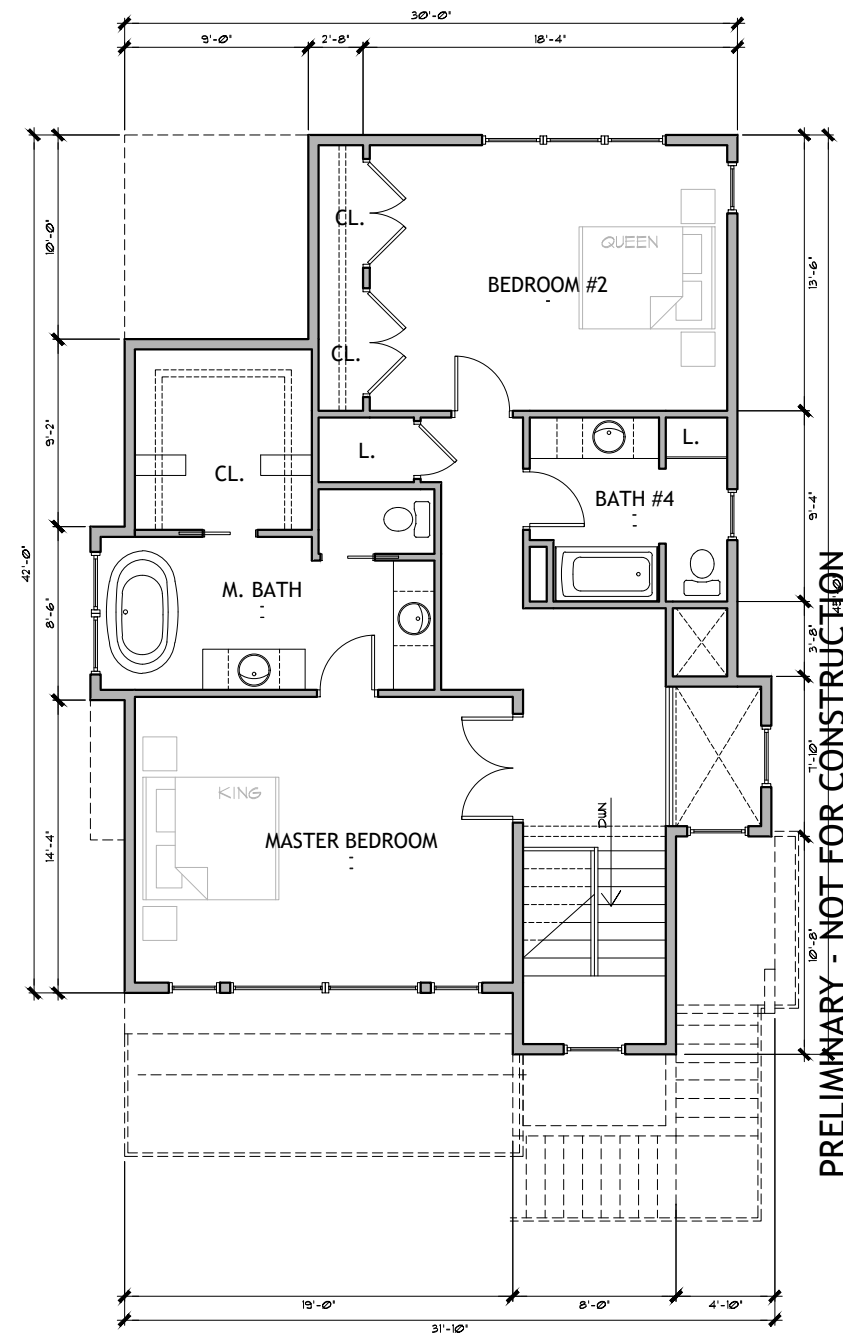
607 E. 6th Avenue
 Post Falls, Idaho 83854
 PH: (208) 773 - 9864
 mark@ml-architect.com



1
A2.1 **GROUND FLOOR PLAN**
SCALE: 1/4" = 1'-0"
GARAGE: 582 SF.
GROUND FLOOR: 123 SF.



2
A2.1 **MAIN FLOOR PLAN**
SCALE: 1/4" = 1'-0"
MAIN FLOOR: 1331 SF.



3
A2.1 **SECOND FLOOR PLAN**
SCALE: 1/4" = 1'-0"
SECOND FLOOR: 1072 SF.

ML ARCHITECT ASSOCIATES
607 E. 6th Avenue
Post Falls, Idaho 83854
PH: (208) 773-9864
mark@ml-architect.com

PRELIMINARY

PROJECT NUMBER: 22-57
DATE: 12-22
DRAWN:
REVISIONS:

HOUSE PLAN B
BLOCK 5/AREA 14, BLOCK 9/AREA 15
ATLAS WATERFRONT SECOND ADDITION
LUMBER LANE
COEUR D'ALENE, IDAHO

FLOOR PLAN

A2.1

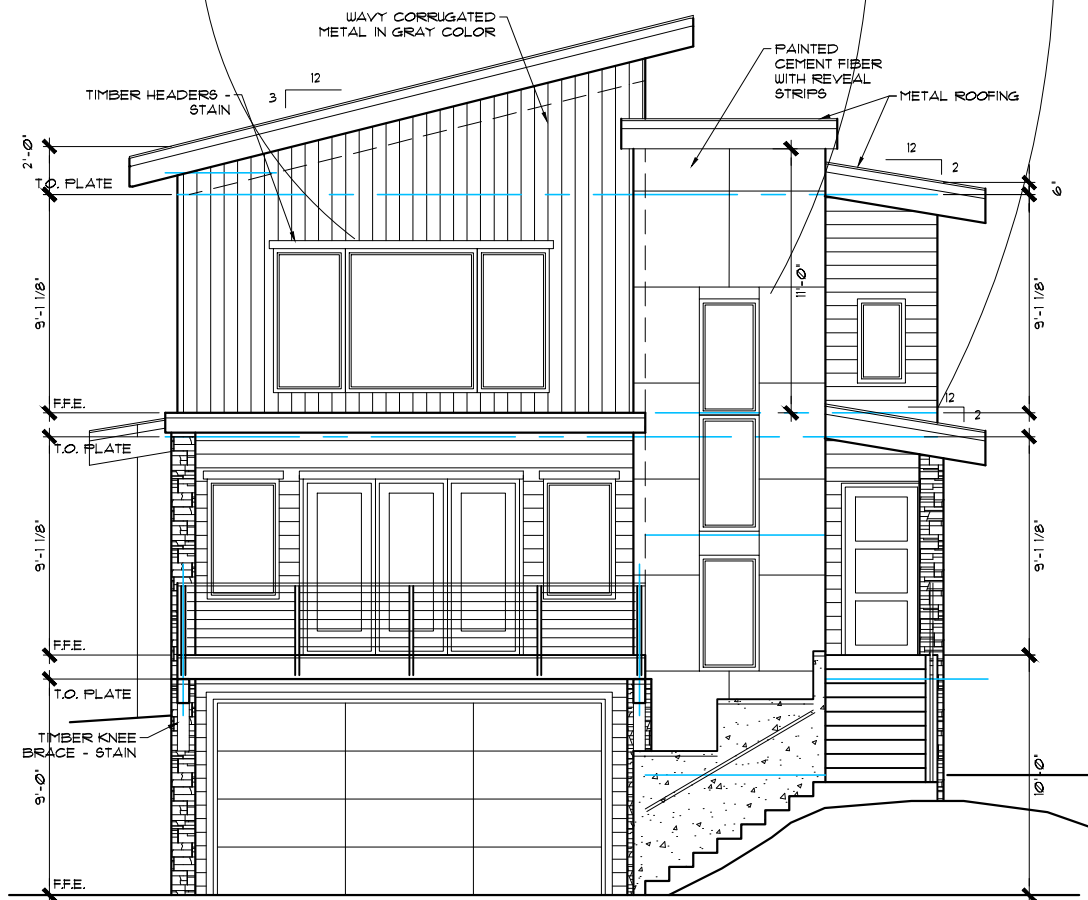
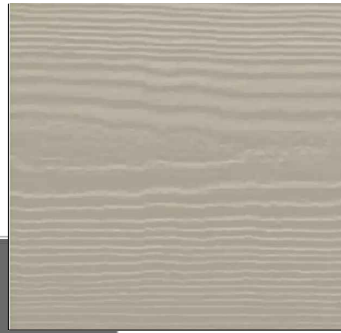
© COPYRIGHT 2022 ML ARCHITECT & ASSOCIATES

HOUSE PLAN B

WAVY CORRUGATED
METAL IN STORM
GRAY COLOR

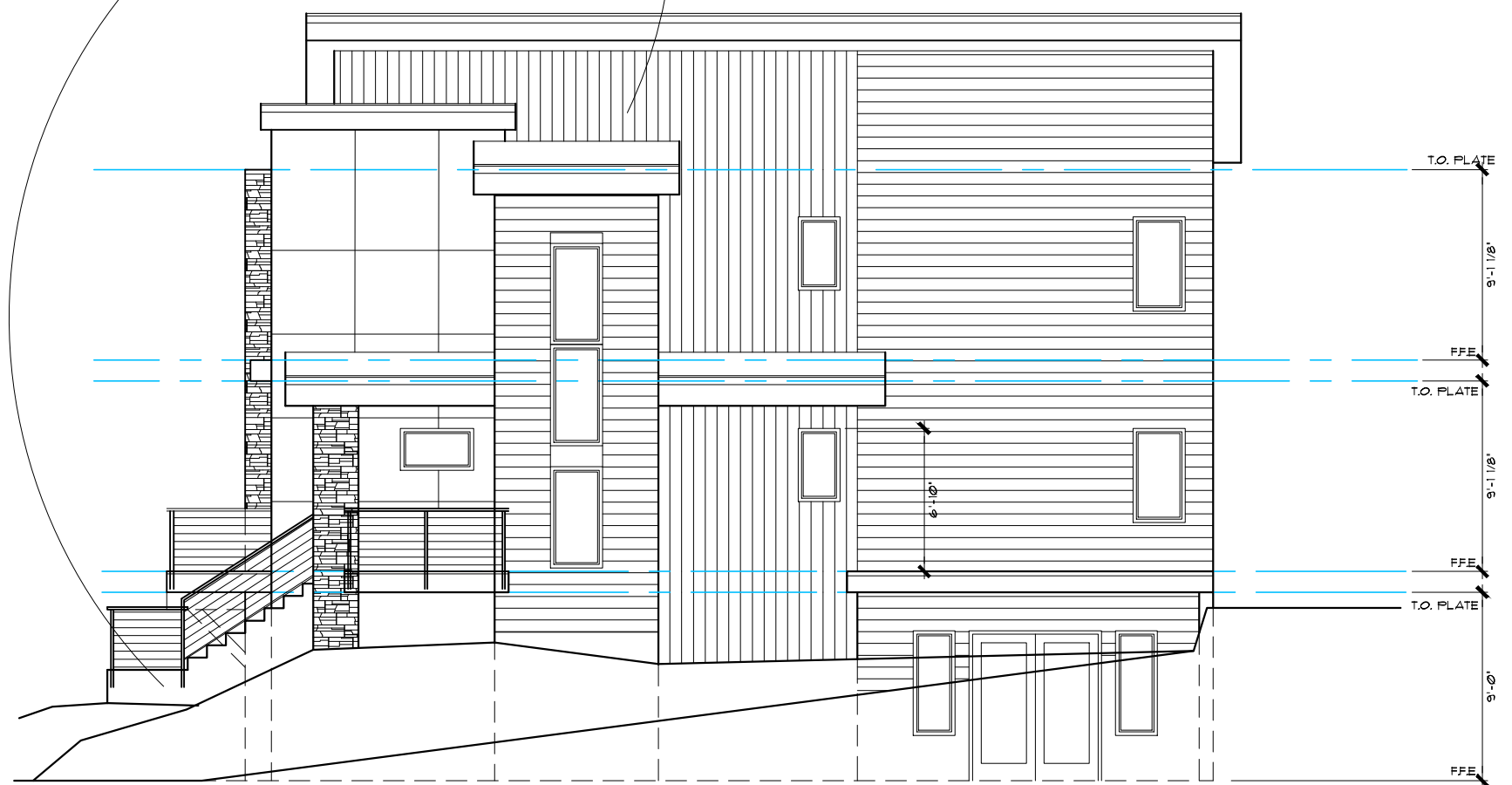


Storm Gray
SR-29.68 E-.84 SRI-29



FRONT ELEVATION

SCALE: 1/8" = 1'-0"



RIGHT SIDE ELEVATION

SCALE: 1/8" = 1'-0"

PROJECT:

**BLOCK 5/AREA 14, BLOCK 9/AREA 15
ATLAS WATERFRONT SECOND ADDITION**

LUMBER LANE COEUR D'ALENE, IDAHO

PAGE:

Donald R Smock Development Company
DBA Harmony Homes LLC



607 E. 6th Avenue
Post Falls, Idaho 83854
PH: (208) 773 - 9864
mark@ml-architect.com



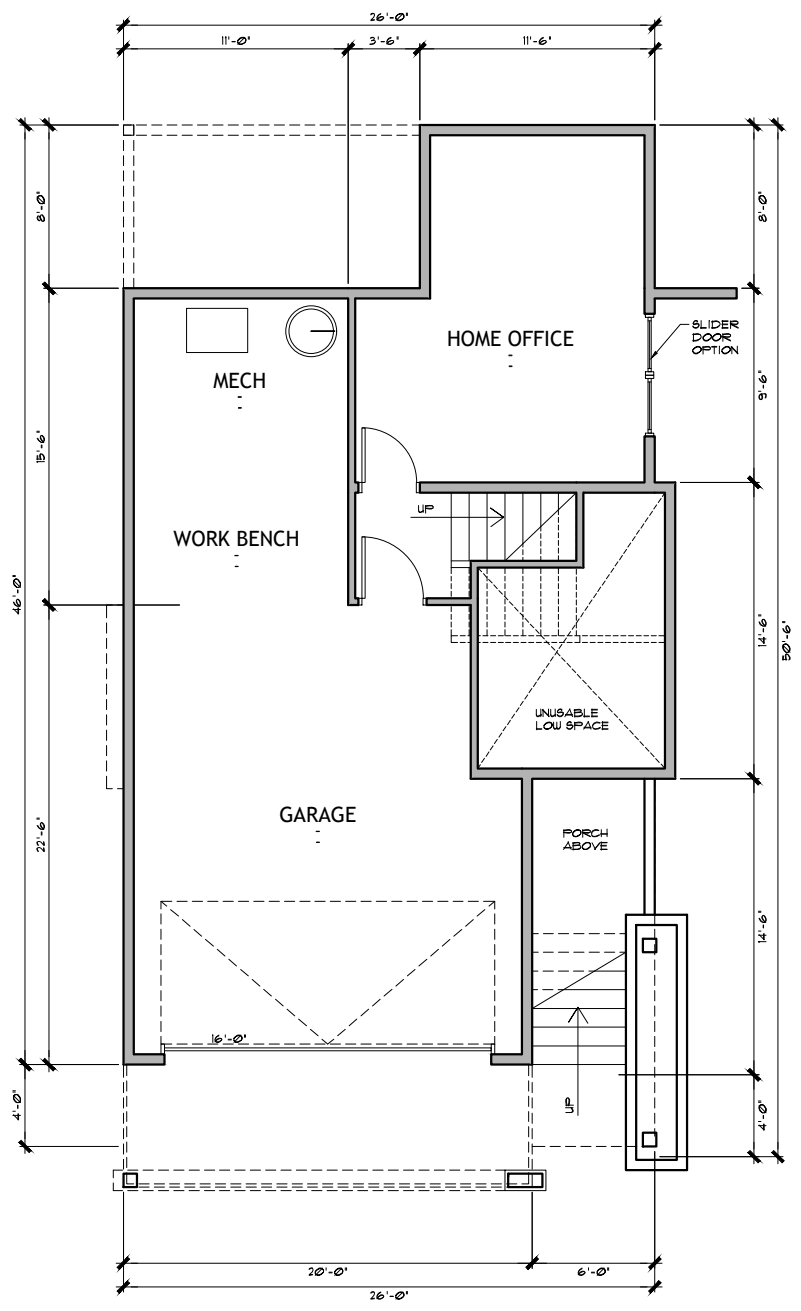
PROJECT NUMBER: 22-57
 DATE: 12-22
 DRAWN: .
 REVISIONS: .

PRELIMINARY - NOT FOR CONSTRUCTION

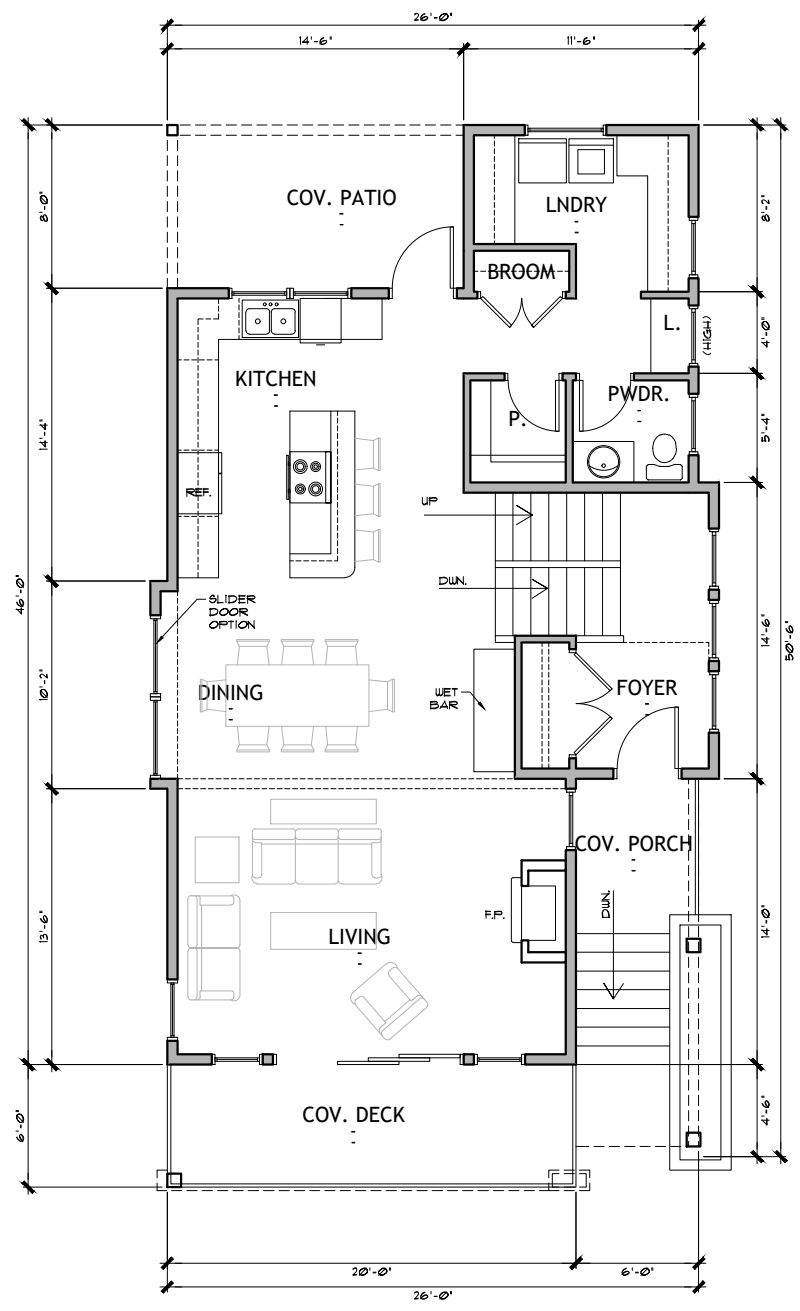
HOUSE PLAN C
 BLOCK 5/AREA 14, BLOCK 9/AREA 15
 ATLAS WATERFRONT SECOND ADDITION
 LUMBER LAINE
 COEUR D'ALENE, IDAHO

FLOOR PLAN

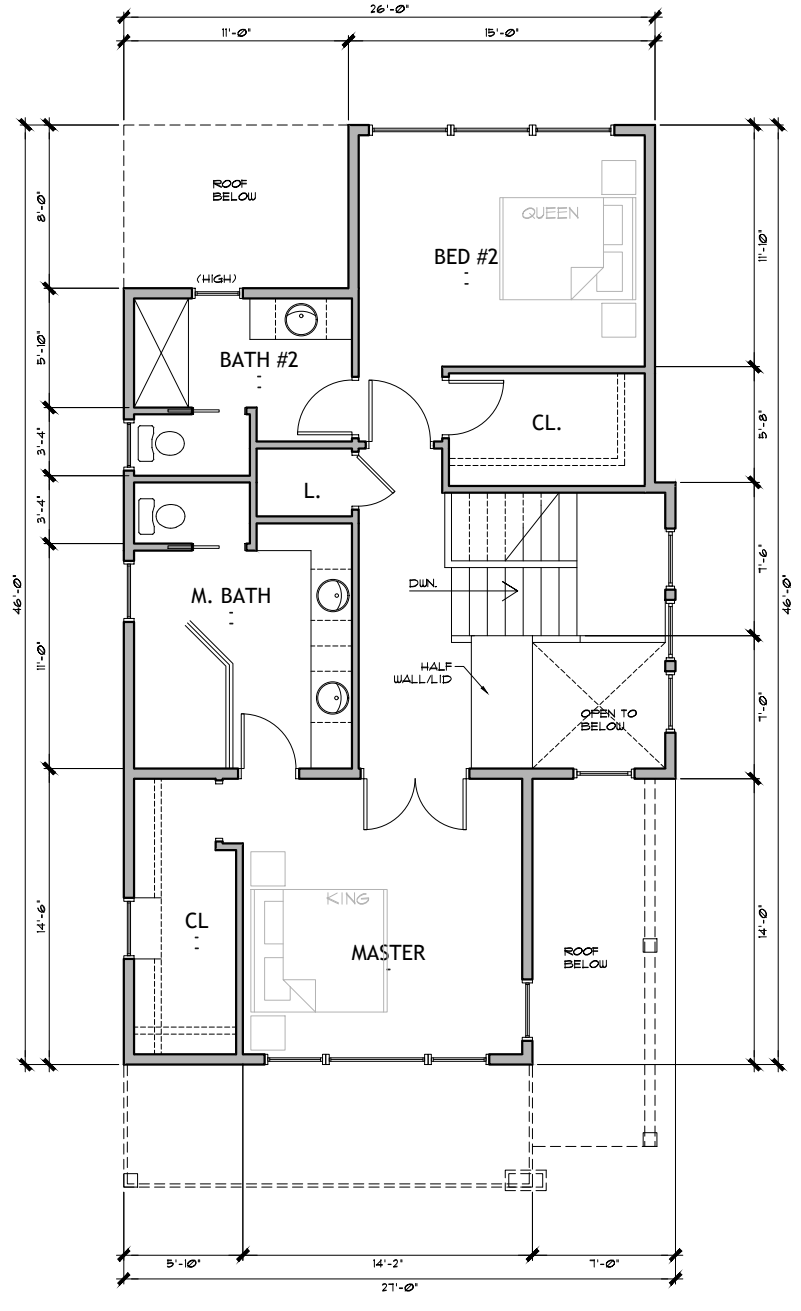
A2.1



1 GROUND FLOOR PLAN
 SCALE: 1/4" = 1'-0"
 GARAGE: 599 SF.
 GROUND FLOOR: 292 SF.

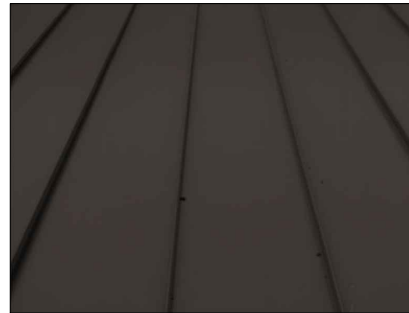
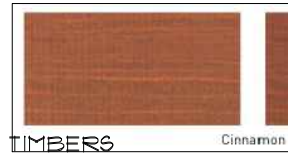
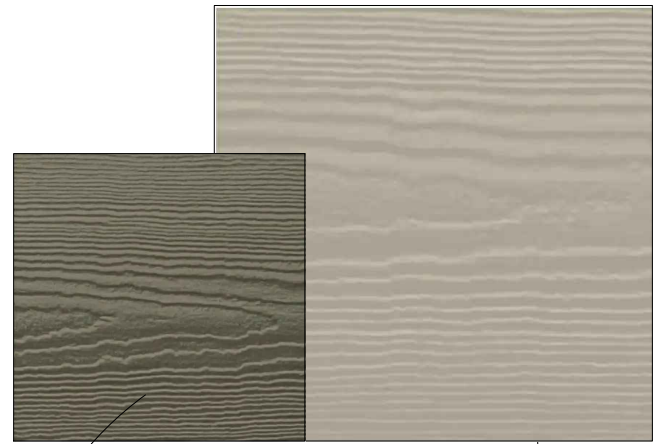


2 MAIN FLOOR PLAN
 SCALE: 1/4" = 1'-0"
 MAIN FLOOR: 1018 SF.

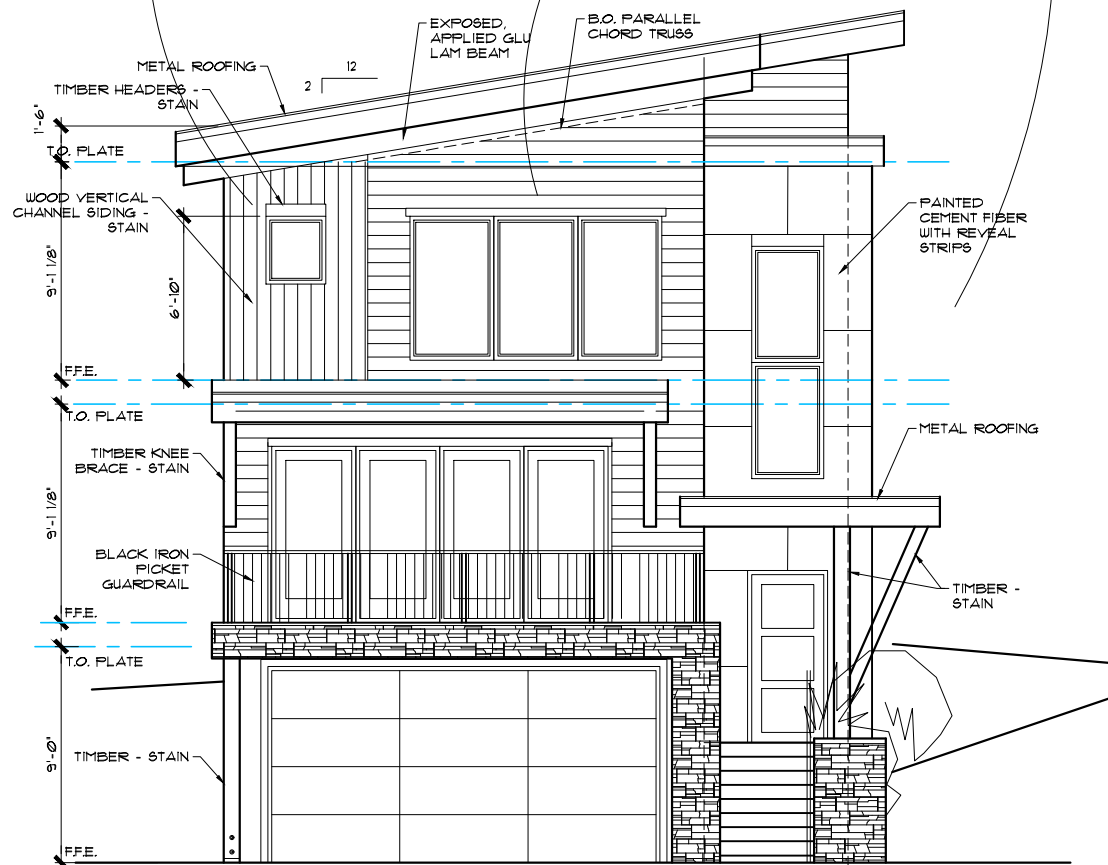


3 SECOND FLOOR PLAN
 SCALE: 1/4" = 1'-0"
 SECOND FLOOR: 890 SF.

HOUSE PLAN C

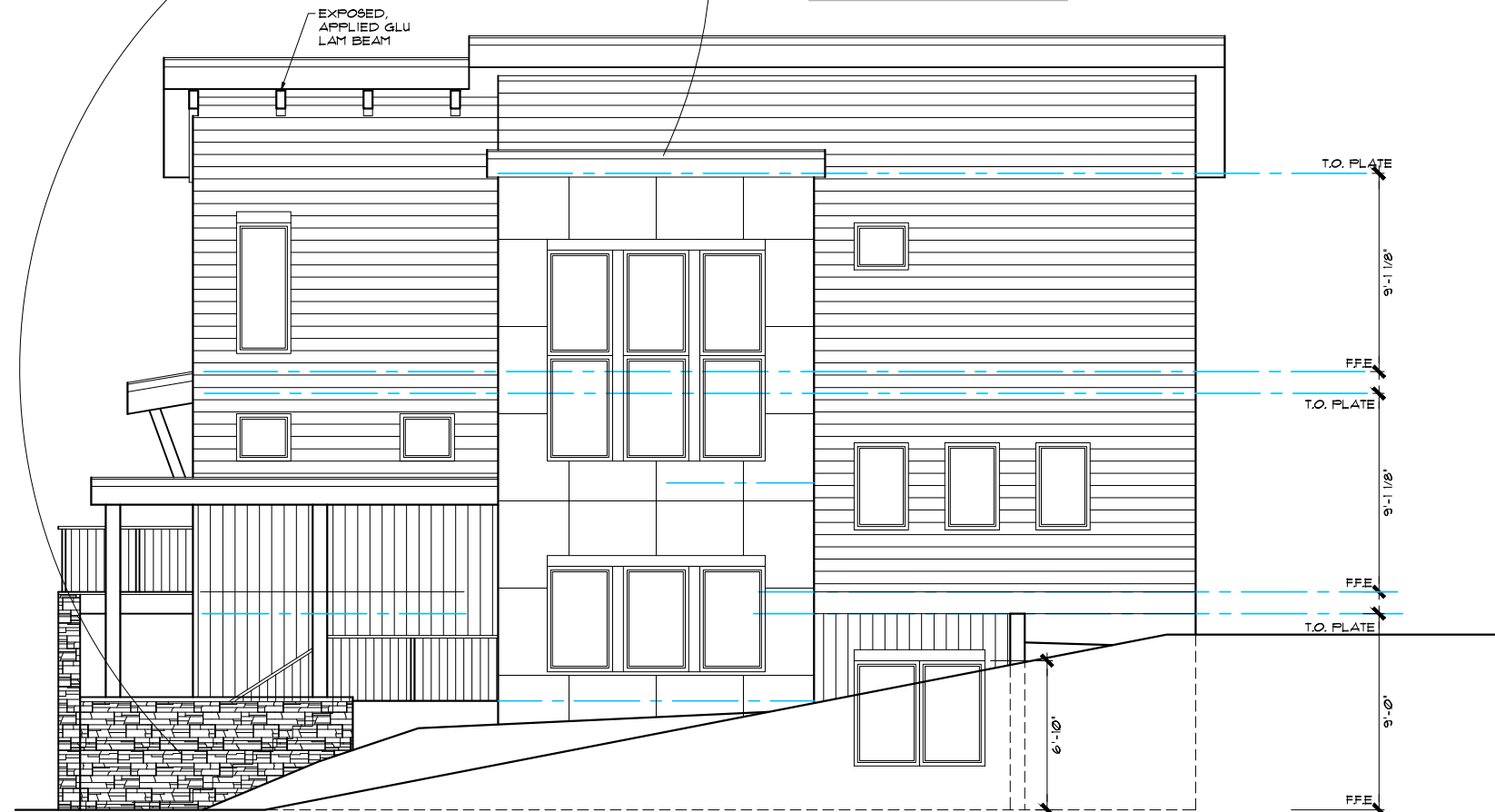


METAL ROOF



FRONT ELEVATION

SCALE: 1/8" = 1'-0"



RIGHT SIDE ELEVATION

SCALE: 1/8" = 1'-0"

PROJECT:

**BLOCK 5/AREA 14, BLOCK 9/AREA 15
ATLAS WATERFRONT SECOND ADDITION**

LUMBER LANE COEUR D'ALENE, IDAHO

PAGE:

Donald R Smock Development Company
DBA Harmony Homes LLC



607 E. 6th Avenue
Post Falls, Idaho 83854
PH: (208) 773 - 9864
mark@ml-architect.com