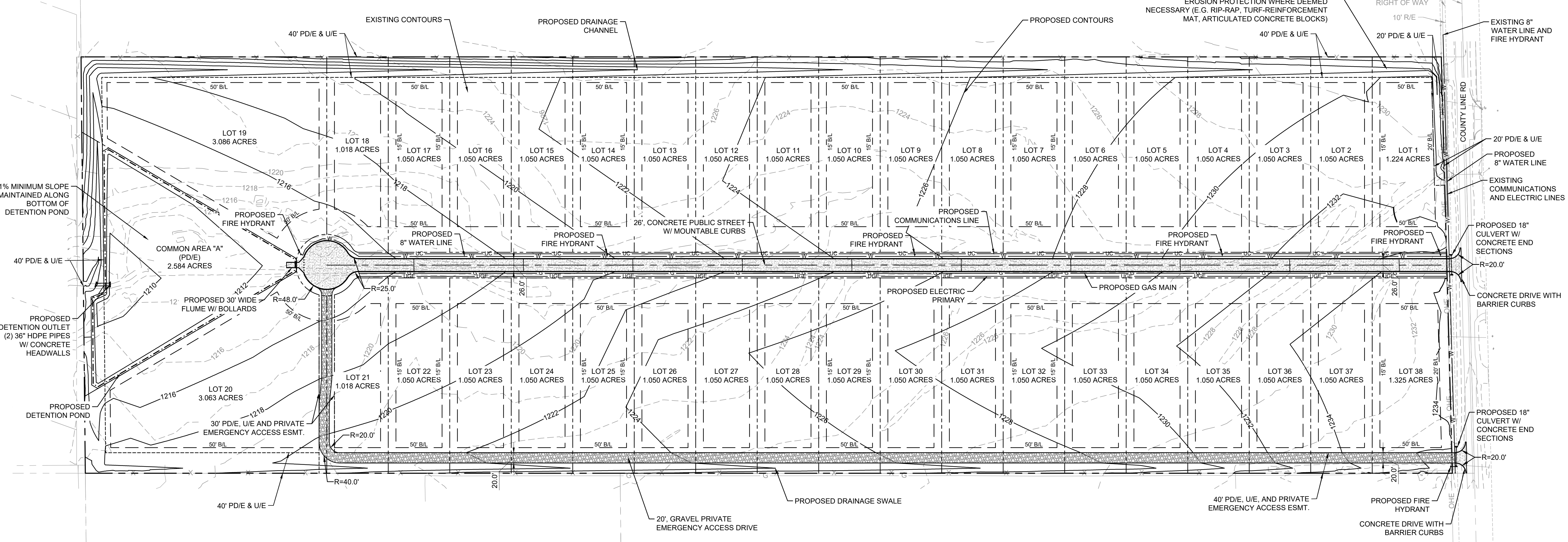
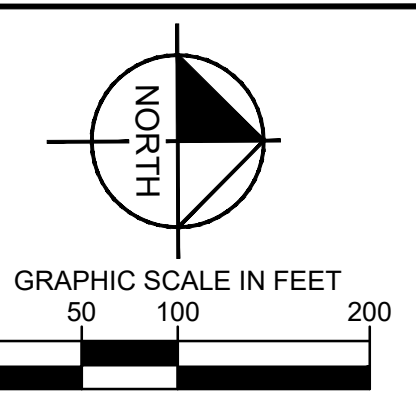
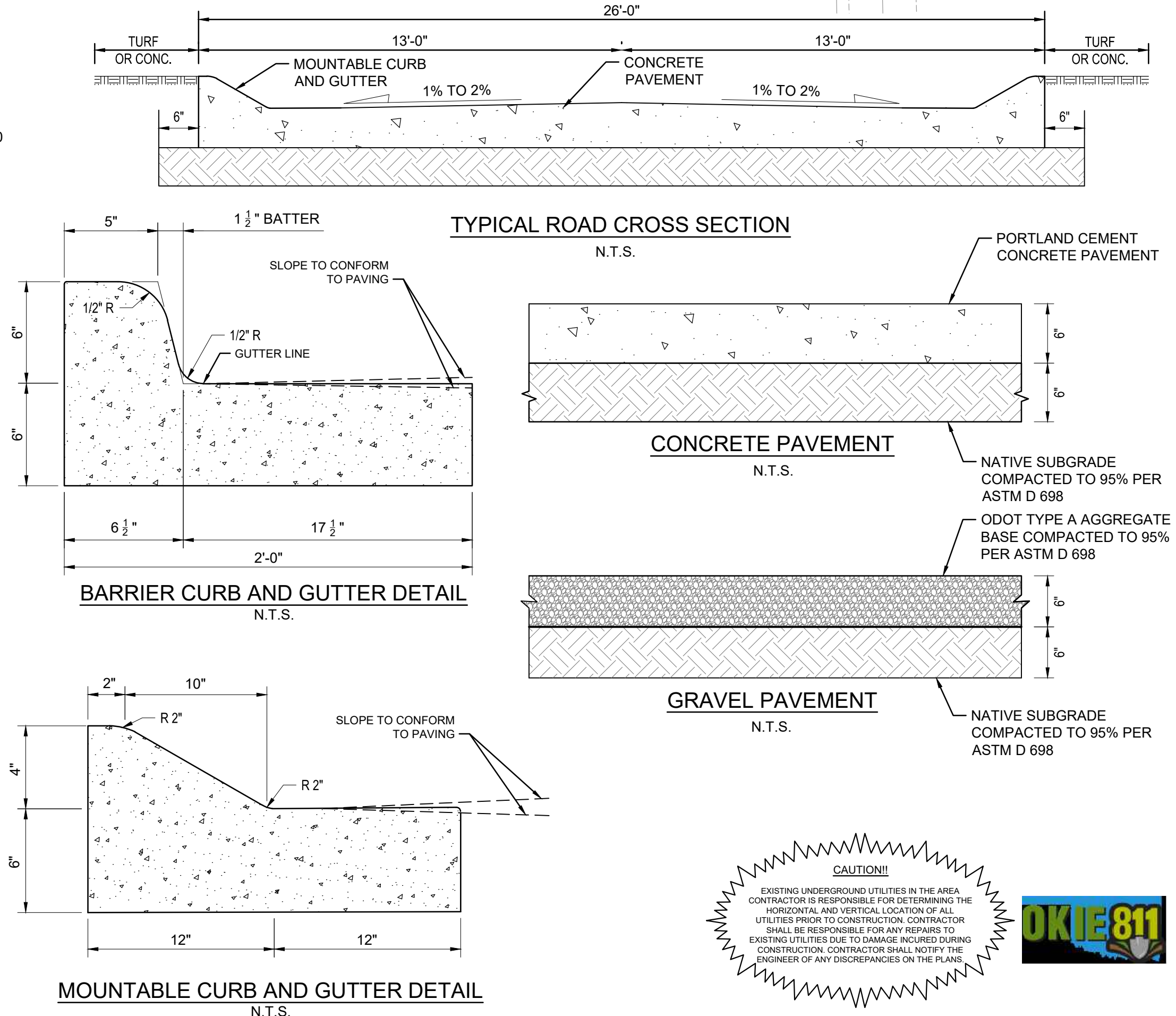
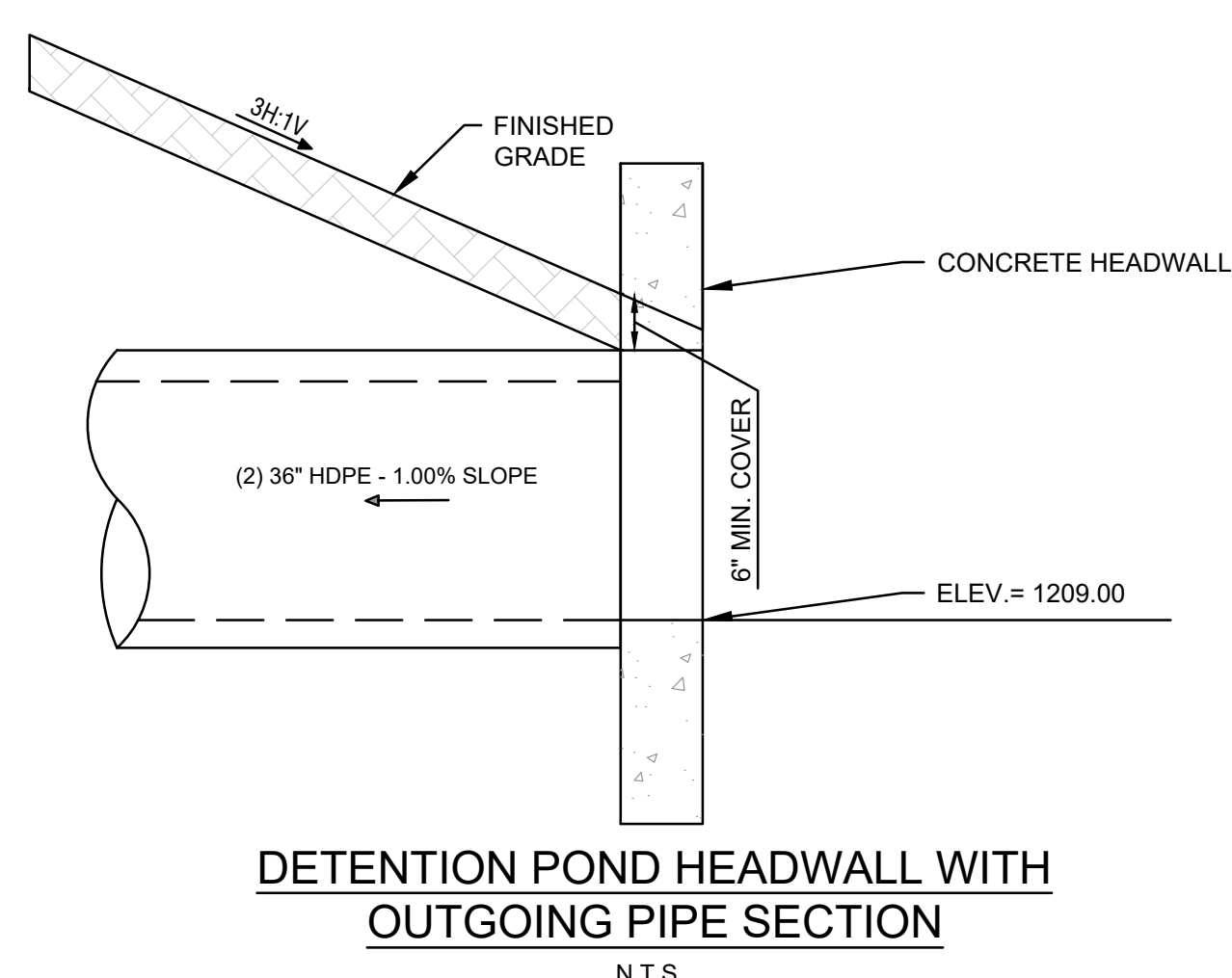
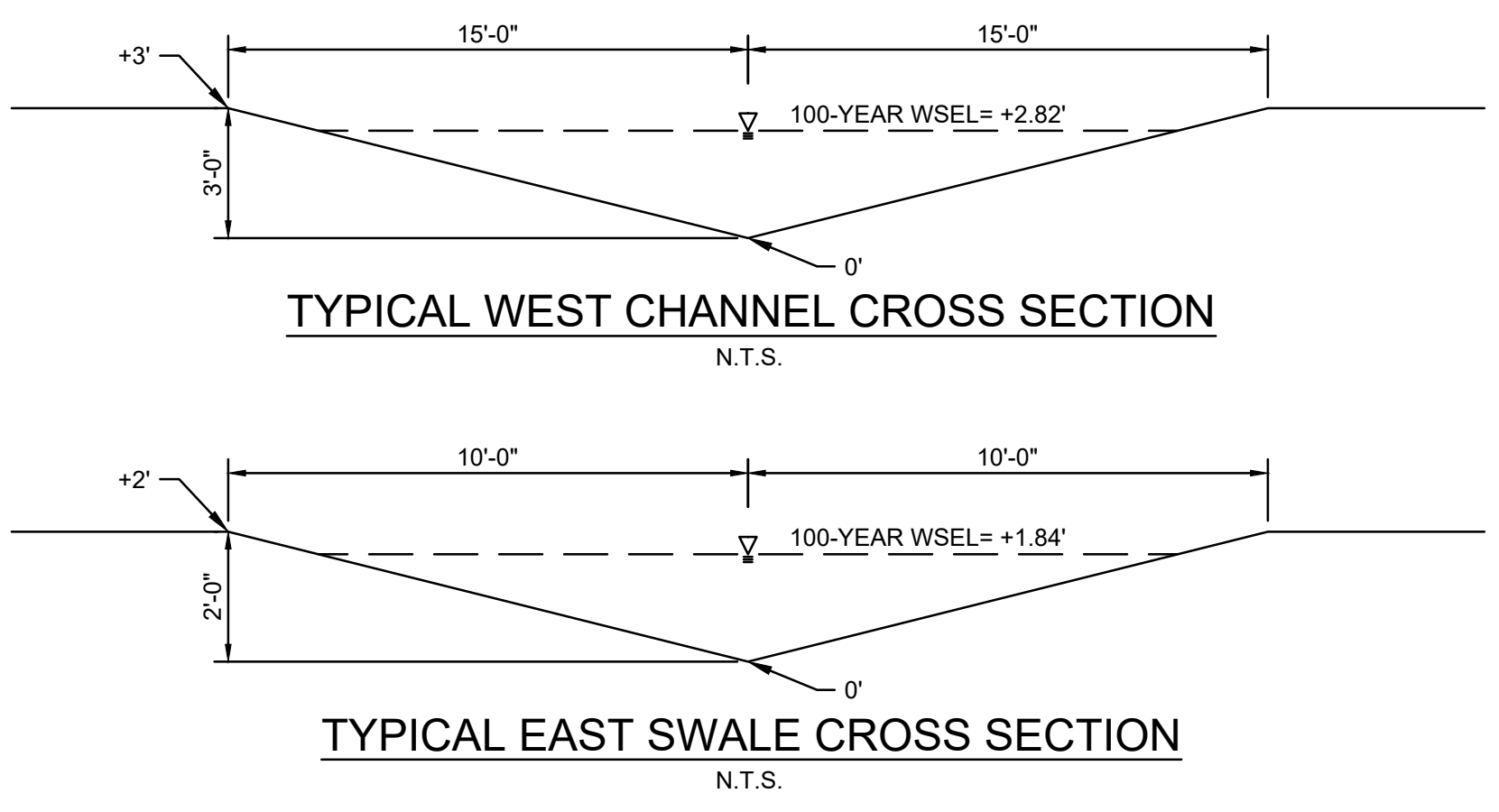
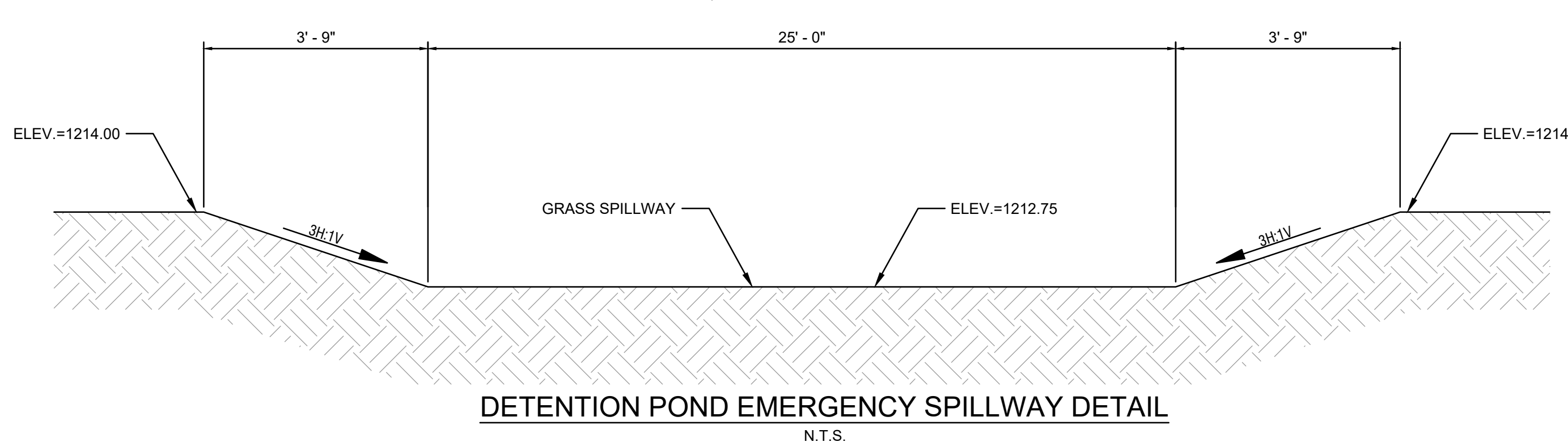


Plotted By: Jace, Date: December 12, 2025, 01:57:28pm
 File Path: \\K:\C:\WIN\060043600-Okarche Residential Development\06-CAD\PlanSheets\06-Preliminary Engineering\Plan.dwg
 This document, together with the concepts and designs presented herein, is intended only for the specific purpose and client for which it was prepared. Reuse of and improper reliance on this document without written authorization and adaptation by Kimley-Horn and Associates, Inc. shall be without liability to Kimley-Horn and Associates, Inc.



PAVING LEGEND	
	CONCRETE (RE: THIS SHEET)
	GRAVEL (RE: THIS SHEET)

- NOTES**
- DIMENSIONS AND/OR COORDINATES ARE TO BACK OF CURB UNLESS OTHERWISE NOTED.
 - TO THE BEST OF OUR ABILITY, THIS SUBDIVISION HAS BEEN DESIGNED IN ACCORDANCE WITH THE ORDINANCES AND REGULATIONS GOVERNING THE SUBDIVISION.
 - SANITARY FOR THE SITE WILL BE PROVIDED BY INDIVIDUAL LOT OWNERS VIA ON-SITE SEPTIC SYSTEMS IN ACCORDANCE WITH OKLAHOMA DEPARTMENT OF ENVIRONMENTAL QUALITY REQUIREMENTS.



CAUTION!
 EXISTING UNDERGROUND UTILITIES IN THE AREA. CONTRACTOR IS RESPONSIBLE FOR DETERMINING THE HORIZONTAL AND VERTICAL LOCATION OF ALL UTILITIES PRIOR TO CONSTRUCTION. CONTRACTOR SHALL BE RESPONSIBLE FOR ANY REPAIRS TO EXISTING UTILITIES DUE TO DAMAGE INCURRED DURING CONSTRUCTION. CONTRACTOR SHALL NOTIFY THE ENGINEER OF ANY DISCREPANCIES ON THE PLANS.

NO.	REVISIONS	DATE	BY

Kimley-Horn

© 2025 KIMLEY-HORN AND ASSOCIATES, INC.
 4177 GALLARDA PARKWAY, SUITE 250, OKLAHOMA CITY, OK 73142
 PHONE: 405-241-5543 FAX: 405-241-5540
 WWW.KIMLEY-HORN.COM

Kimley-Horn

Engineer: JARED J. KRITTEMBERK
 P.E. No. 30439

KHA PROJECT	060043600
DATE	DECEMBER 2025
SCALE	AS SHOWN
DESIGNED BY	JJK
DRAWN BY	JCE
CHECKED BY	JJK

**HARVEST RIDGE
 OKARCHÉ, OKLAHOMA 73762**

**PRELIMINARY ENGINEERING
 PLAN**

SHEET NUMBER
C-100