

# COMMERCIAL REAL ESTATE

788 Caldew, Delta  
Annacis Island

**FOR SALE**

ALEX FRASER BRIDGE

Derwent Way

**SOLD**

sq ft (as per survey)

Annacis Island

**High**

- ▶ Fully tenanted with Owner User Opportunity
- ▶ Dock & Grade loading
- ▶ Abundant loading & maneuvering area
- ▶ Sprinklered
- ▶ Rail upgraded

**CONTACT:**  
**604-290-8777**

**Rachel McGladery \***  
**rachel@mcgladery.ca**

**RE/MAX**  
COMMERCIAL

RE/MAX Commercial Advantage

\* Personal Real Estate Corporation

Each office is independently Owned & Operated

# COMMERCIAL REAL ESTATE

788 Caldew, Delta  
Annacis Island

**FOR SALE**



## Legal Description

Lot 203, District Lot 312, Group 1,  
New Westminster District Plan 74543

**PID** 007-765-118

**Age** 1976

**Zoning** I-2

**Building Size** 56,523 SF

**Site Size** 2.67 Acres

**Property Taxes** \$ 106,305 (2018)

**Asking Price** \$12,200,000

**CONTACT:**  
**604-290-8777**

**Rachel McGladery \***  
**rachel@mcgladery.ca**

**RE/MAX**  
COMMERCIAL

RE/MAX Commercial Advantage  
#500-889 West Pender Street  
Vancouver, BC V6C 3B2

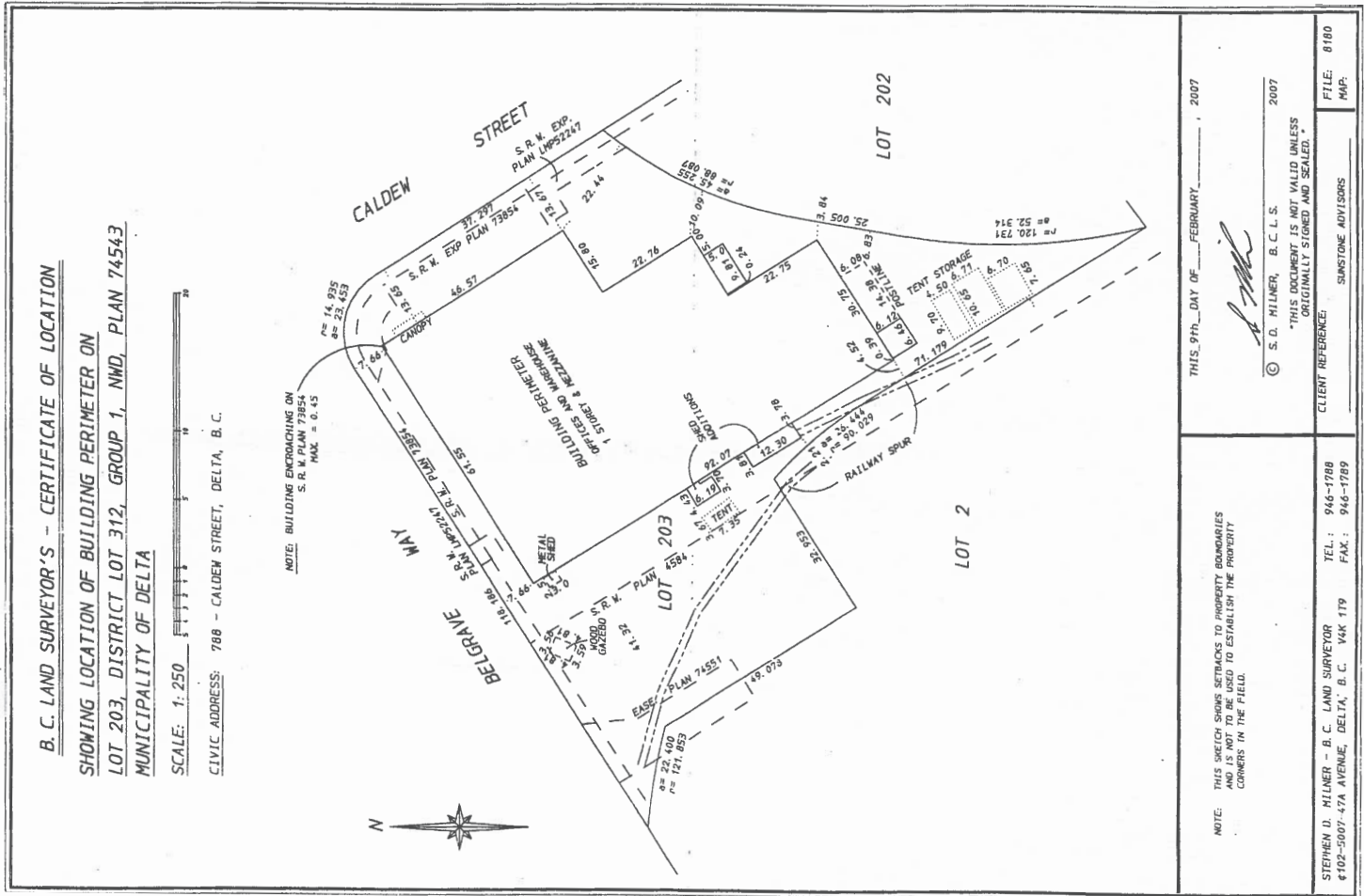
\* Personal Real Estate Corporation

Each office is independently Owned & Operated

# COMMERCIAL REAL ESTATE

788 Caldew, Delta  
Annacis Island

## FOR SALE



### SITE PLANS

**CONTACT:**  
**604-290-8777**

**Rachel McGladery \***  
**rachel@mcgladery.ca**



RE/MAX Commercial Advantage  
 #500-889 West Pender Street  
 Vancouver, BC V6C 3B2

\* Personal Real Estate Corporation

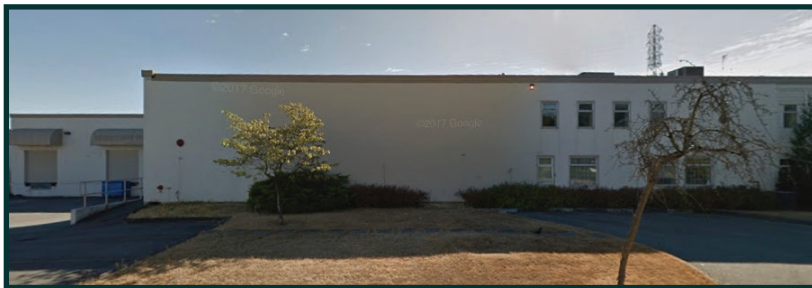
Each office is independently Owned & Operated



# COMMERCIAL REAL ESTATE

788 Caldew, Delta  
Annacis Island

**FOR SALE**



PHOTOS

**CONTACT:**  
**604-290-8777**

**Rachel McGladery \***  
**rachel@mcgladery.ca**

**RE/MAX**  
COMMERCIAL

RE/MAX Commercial Advantage  
#500-889 West Pender Street  
Vancouver, BC V6C 3B2

\* Personal Real Estate Corporation

Each office is independently Owned & Operated