

COMMERCIAL REAL ESTATE

IMPACT PLAZA

10060 - 152 Street, Surrey



Highlights:

- Make an Impact!
- Significant Building Signage Available
- Best Parking in Guildford

CONTACT:
604-290-8777

Rachel McGladery*
rachel@mcgladery.ca

RE/MAX
COMMERCIAL

RE/MAX Commercial Advantage
#500-889 West Pender Street
Vancouver, BC V6C 3B2

* Personal Real Estate Corporation

Each office is independently Owned & Operated

COMMERCIAL REAL ESTATE

IMPACT PLAZA

10060 - 152 Street, Surrey

Opportunity

Impact Plaza is located across from Guildford Town Centre so there are plenty of amenities within walking distance. 152 Street provides easy access to the TransCanada Highway (Highway #1) and the US Border.

Traffic Count

38,000 vehicles per day on 152 Street

Availability

Unit	Size (sqft)	Base Rent	CAM*	Monthly Rent + GST
------	-------------	-----------	------	--------------------

OFFICE:

301	1,400	\$20 psf	\$10.50 psf	\$ 4,250
302	1,031	\$20 psf	\$10.50 psf	\$ 5,140
209	407	\$29 psf	\$16.50 psf	\$ 1,543



* Plus 5% of Base Rent for Management Fee

CONTACT:
604-290-8777

Rachel McGladery*
rachel@mcgladery.ca



RE/MAX Commercial Advantage
#500-889 West Pender Street
Vancouver, BC V6C 3B2

* Personal Real Estate Corporation

Each office is independently Owned & Operated

COMMERCIAL REAL ESTATE

IMPACT PLAZA

10060 - 152 Street, Surrey



CONTACT:
604-290-8777

Rachel McGladery*
rachel@mcgladery.ca

RE/MAX
COMMERCIAL

RE/MAX Commercial Advantage
#500-889 West Pender Street
Vancouver, BC V6C 3B2

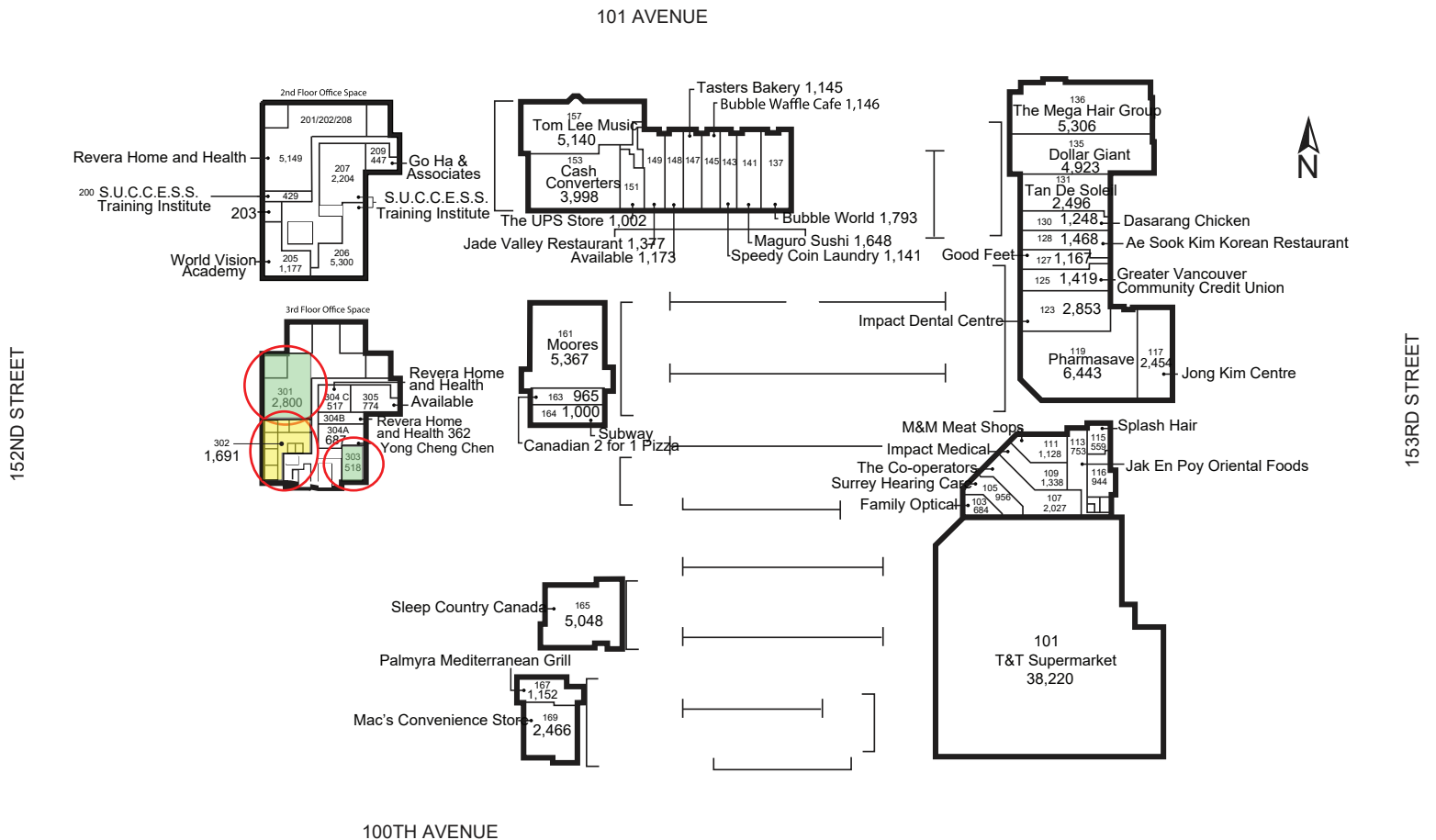
* Personal Real Estate Corporation

Each office is independently Owned & Operated

COMMERCIAL REAL ESTATE

IMPACT PLAZA

10060 - 152 Street, Surrey



SITE PLAN

CONTACT:
604-290-8777

Rachel McGladery*
rachel@mcgladery.ca



RE/MAX Commercial Advantage
#500-889 West Pender Street
Vancouver, BC V6C 3B2

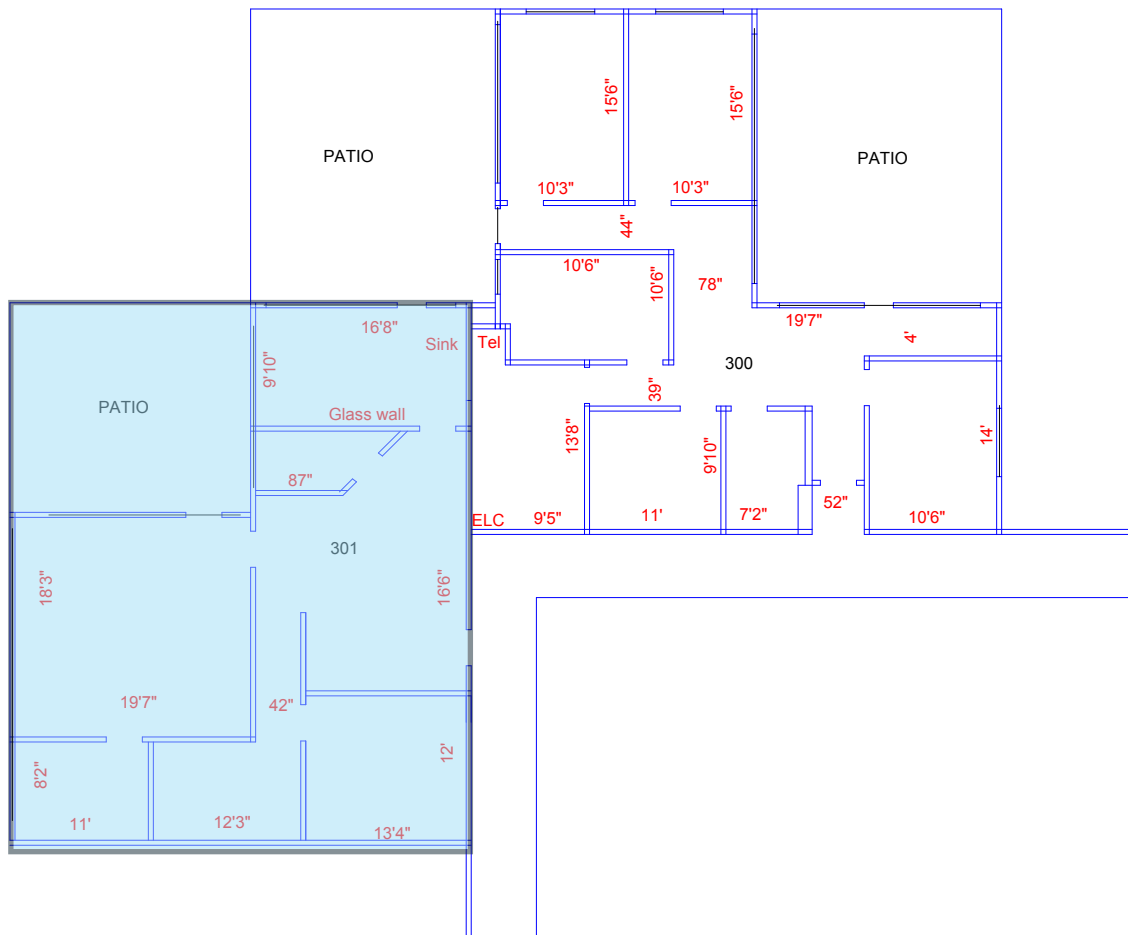
* Personal Real Estate Corporation

Each office is independently Owned & Operated

COMMERCIAL REAL ESTATE

IMPACT PLAZA

10060 - 152 Street, Surrey



SUITE #301

CONTACT:
604-290-8777

Rachel McGladery*
rachel@mcgladery.ca



RE/MAX Commercial Advantage
#500-889 West Pender Street
Vancouver, BC V6C 3B2

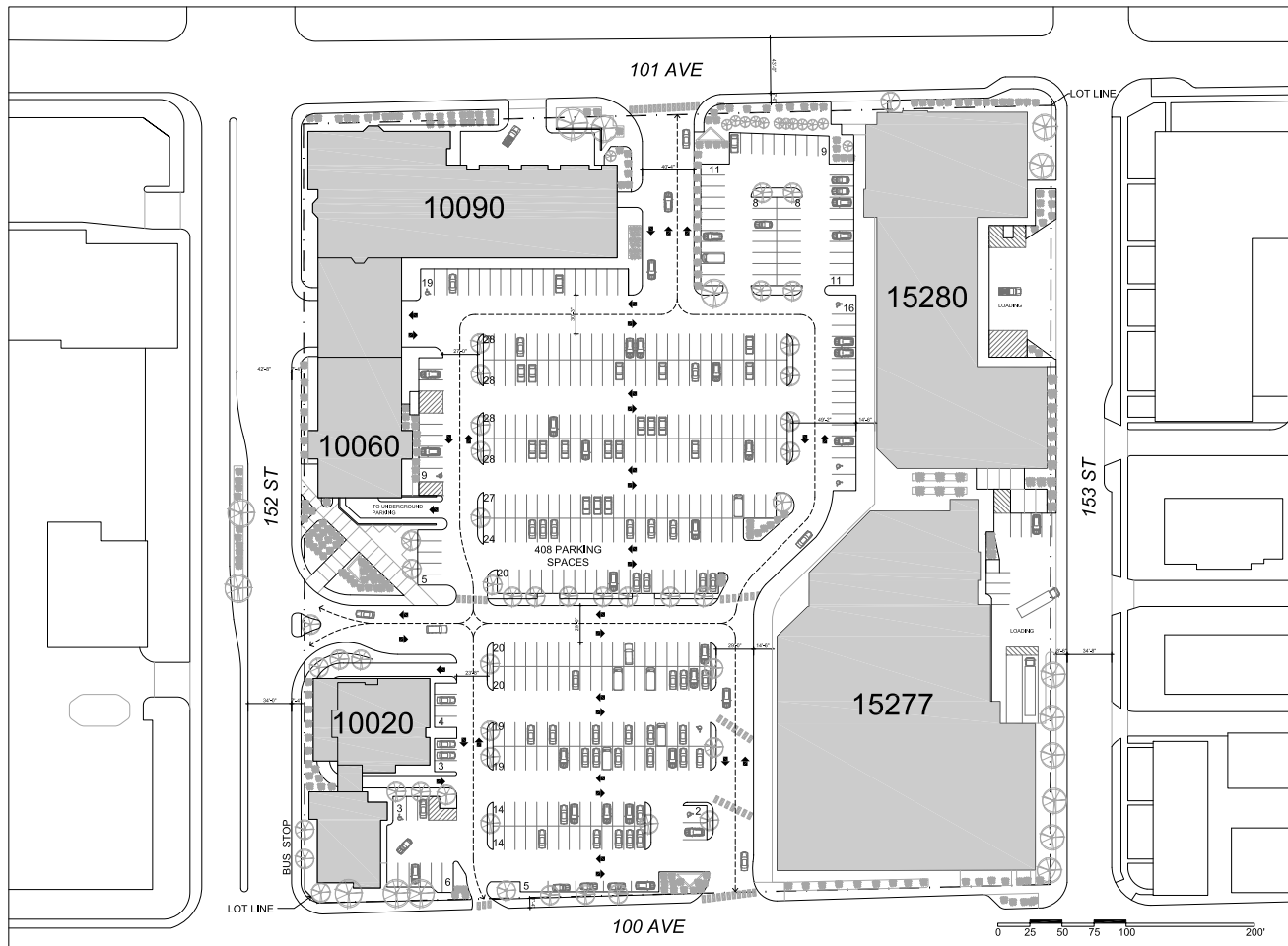
* Personal Real Estate Corporation

Each office is independently Owned & Operated

COMMERCIAL REAL ESTATE

IMPACT PLAZA

10060 - 152 Street, Surrey



SITE PLAN

CONTACT:
604-290-8777

Rachel McGladery*
rachel@mcgladery.ca



RE/MAX Commercial Advantage
#500-889 West Pender Street
Vancouver, BC V6C 3B2

* Personal Real Estate Corporation

Each office is independently Owned & Operated