

COMMERCIAL REAL ESTATE

788 Caldew, Delta
Annacis Island

FOR SALE



- ▶ 56,523* SF Warehouse with Rail * (as per survey)
- ▶ 2.67 acres on Strategic Annacis Island

Highlights:

- ▶ Fully Tenanted with Owner User Opportunity
- ▶ Dock & Grade loading
- ▶ Abundant loading & maneuvering area
- ▶ Sprinklered
- ▶ Rail upgraded

CONTACT:
604-290-8777

Rachel McGladery *
rachel@mcgladery.ca

RE/MAX
COMMERCIAL

RE/MAX Commercial Advantage
#500-889 West Pender Street
Vancouver, BC V6C 3B2

* Personal Real Estate Corporation

Each office is independently Owned & Operated

COMMERCIAL REAL ESTATE

788 Caldew, Delta
Annacis Island

FOR SALE



Legal Description

Lot 203, District Lot 312, Group 1,
New Westminster District Plan 74543

PID 007-765-118

Age 1976

Zoning I-2

Building Size 56,523 SF

Site Size 2.67 Acres

Property Taxes \$106,305 (2018)

Asking Price \$13,000,000

CONTACT:
604-290-8777

Rachel McGladery *
rachel@mcgladery.ca

RE/MAX
COMMERCIAL

RE/MAX Commercial Advantage
#500-889 West Pender Street
Vancouver, BC V6C 3B2

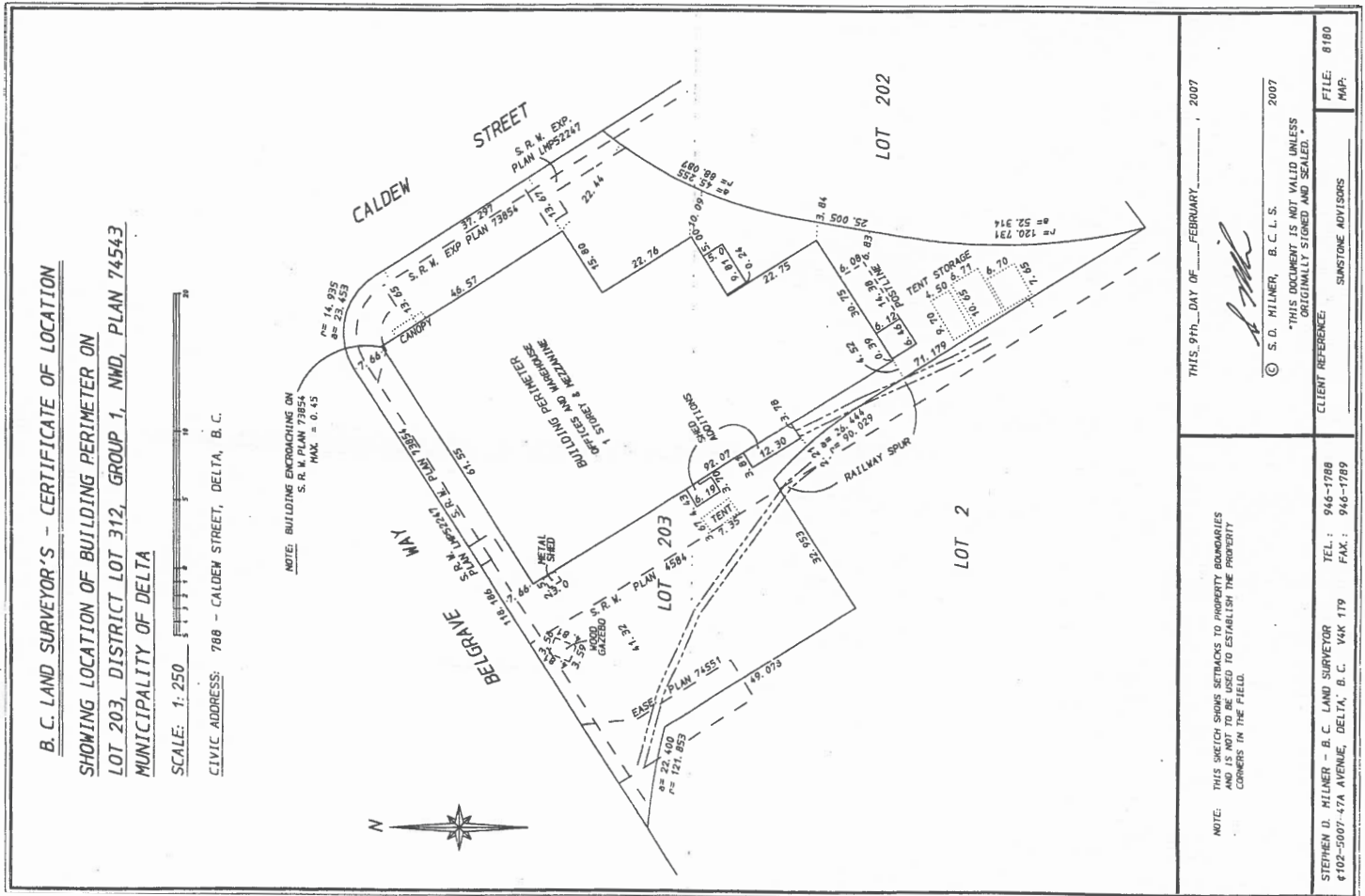
* Personal Real Estate Corporation

Each office is independently Owned & Operated

COMMERCIAL REAL ESTATE

788 Caldew, Delta
Annacis Island

FOR SALE



SITE PLANS

CONTACT:
604-290-8777

Rachel McGladery *
rachel@mcgladery.ca



RE/MAX Commercial Advantage
 #500-889 West Pender Street
 Vancouver, BC V6C 3B2

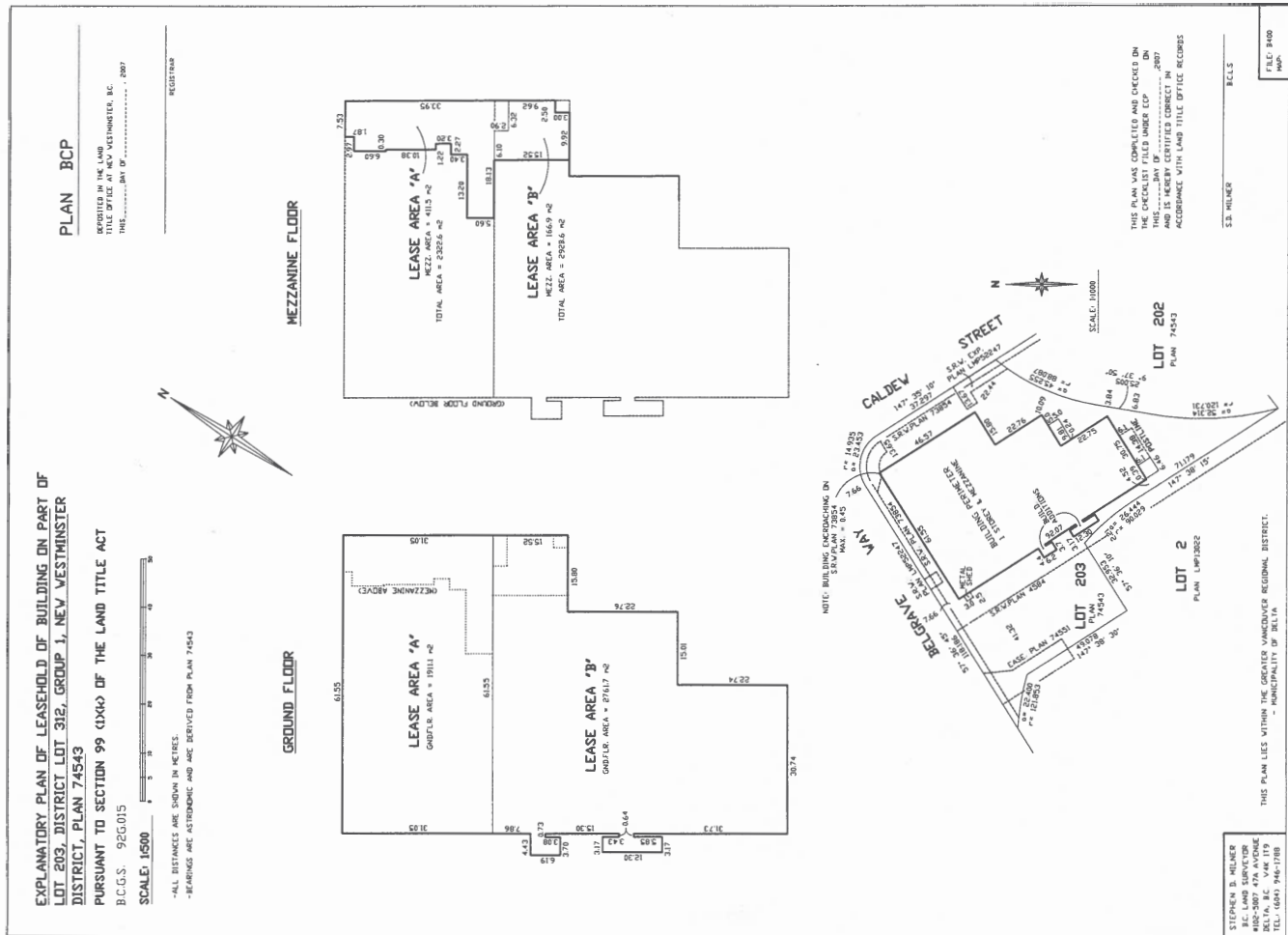
* Personal Real Estate Corporation

Each office is independently Owned & Operated

COMMERCIAL REAL ESTATE

788 Caldew, Delta
Annacis Island

FOR SALE



SITE PLANS

CONTACT:
604-290-8777

Rachel McGladery *
rachel@mcgladery.ca

RE/MAX
COMMERCIAL

RE/MAX Commercial Advantage
#500-889 West Pender Street
Vancouver, BC V6C 3B2

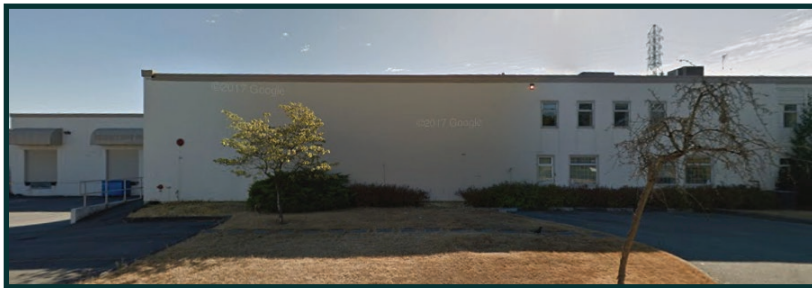
* Personal Real Estate Corporation

Each office is independently Owned & Operated

COMMERCIAL REAL ESTATE

788 Caldew, Delta
Annacis Island

FOR SALE



PHOTOS

CONTACT:
604-290-8777

Rachel McGladery *
rachel@mcgladery.ca

RE/MAX
COMMERCIAL

RE/MAX Commercial Advantage
#500-889 West Pender Street
Vancouver, BC V6C 3B2

* Personal Real Estate Corporation

Each office is independently Owned & Operated