

# COMMERCIAL LAND - SURREY, BC



Hwy #15



Hwy #10



**RARELY  
AVAILABLE  
Industrial Land  
FOR SALE**

17 acres in Surrey  
Near Hwy #10 & 176 Street  
Zone IL and Serviced

**CONTACT:  
604-290-8777**

**Rachel McGladery \***  
**rachel@mcgladery.ca**

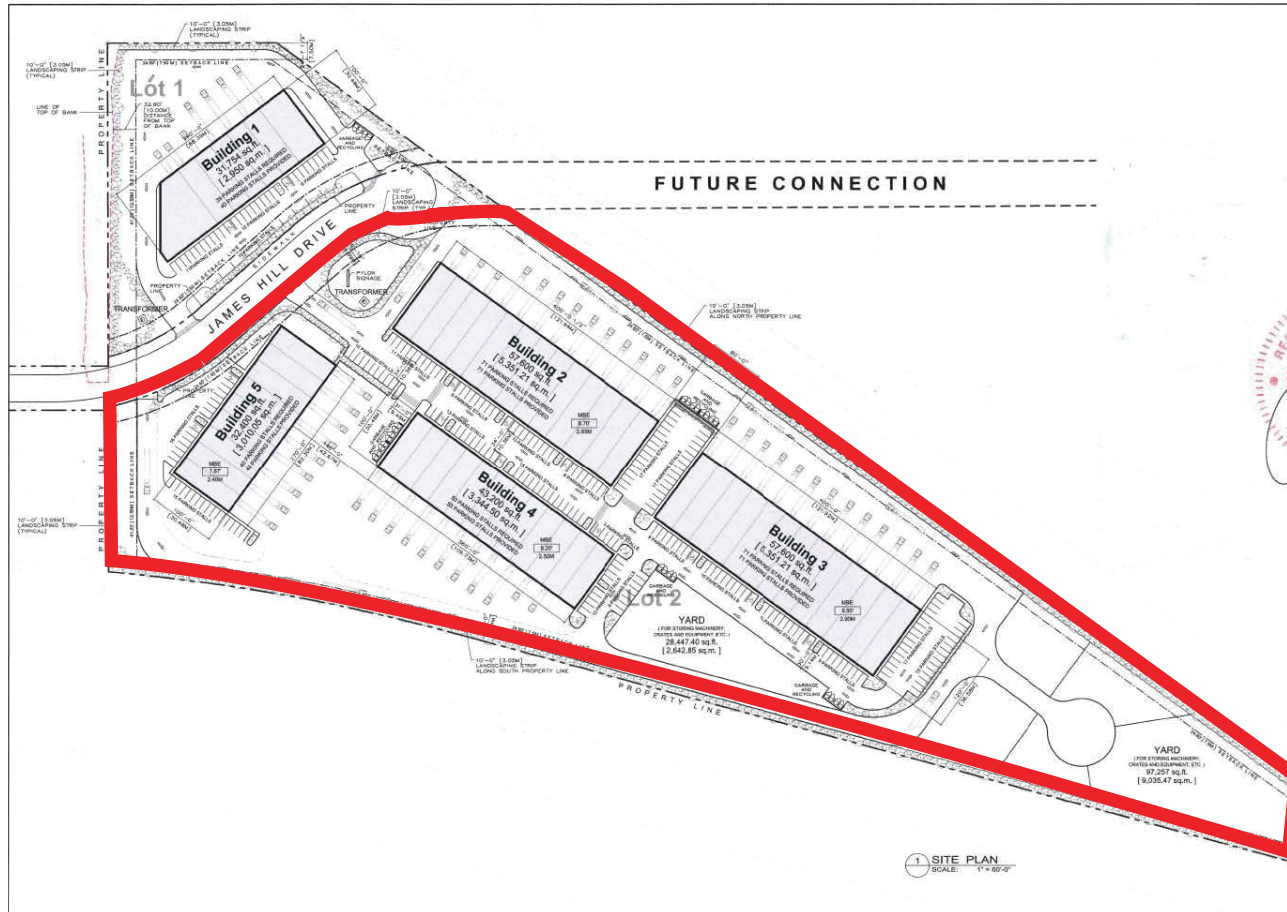
\* Personal Real Estate Corporation



RE/MAX Commercial Advantage

Each office is independently Owned & Operated

# COMMERCIAL LAND - SURREY, BC



## Legal Description:

Lot 2, Section 5, Township 8, New Westminster District Plan EPP 48040

**Address:** 17670 James Hill Drive  
Surrey, BC

**PID:** 029-835-089  
**Zoning:** IL  
**Site Size:** 17 acres (approx)  
**Property Taxes:** \$198,541  
**Asking Price:** Contact Broker

Central access to Hwy #1, 99, 91 & 15  
Approved Development Permit for  
4 buildings totalling 190,800 sf

**CONTACT:**  
**604-290-8777**

**Rachel McGladery \***  
**rachel@mcgladery.ca**

\* Personal Real Estate Corporation



RE/MAX Commercial Advantage

Each office is independently Owned & Operated