

For Sale or Lease

Fresh Creative Office Surrey

McGladery Commercial

RE/MAX Commercial Advantage

Location

#206 | 9547 - 152nd Street
Guildford | Surrey

Contact

Rachel McGladery

604.290.8777

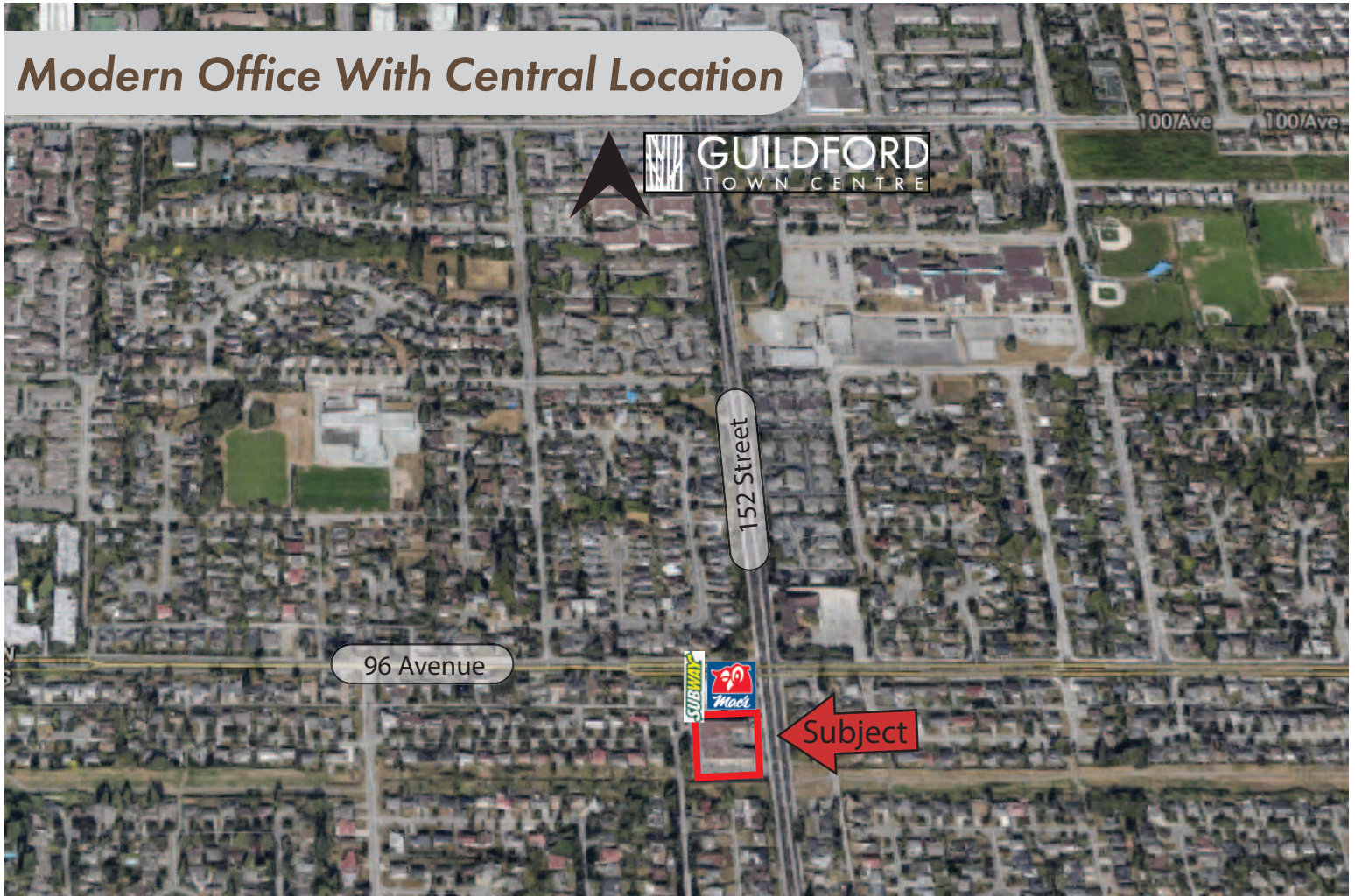
rachel@mcgladery.ca

Joshua McGladery

604.418.2690

joshua@mcgladery.ca

Modern Office With Central Location



HIGHLIGHTS

- Fresh creative office space
- 2,000 sq.ft. for \$1,000,000
- Central location on 152nd Street in Guildford

RE/MAX
COMMERCIAL

#500-889 West Pender St. Vancouver



For Sale or Lease

Guildford

Surrey

#206 - 9547 - 152nd Street



OPPORTUNITY

- Air Conditioned
- Includes two offices, large open area, boardroom, kitchen, storage & two washrooms
- Telephone & data
- 3 designated parking stalls

DETAILS

Address	9547- 152nd Street, Surrey, BC
Zoning	C-8 allowing wide range of office & retail uses
Parking	3 designated parking stalls
Unit	#206 & 207

SALE PRICE

\$1,000,000

LEASE CHART

Size	Basic Rent	Ops & Taxes	Gross Rent
2,000 SQ. FT.	\$21	\$7	\$4,667

Rachel McGladery*
rachel@mcgladery.ca
* Personal Real Estate Corporation
604.290.8777

Joshua McGladery
joshua@mcgladery.ca
604.418.2690

RE/MAX Commercial Advantage



Disclaimer: Although the information contained within is from sources believed to be reliable, no warranty or representation is made as to its accuracy being subject to errors, omissions, conditions, prior lease, withdrawal or other changes without notice and same should not be relied upon without independent verification. RE/MAX Commercial Advantage

For Sale or Lease

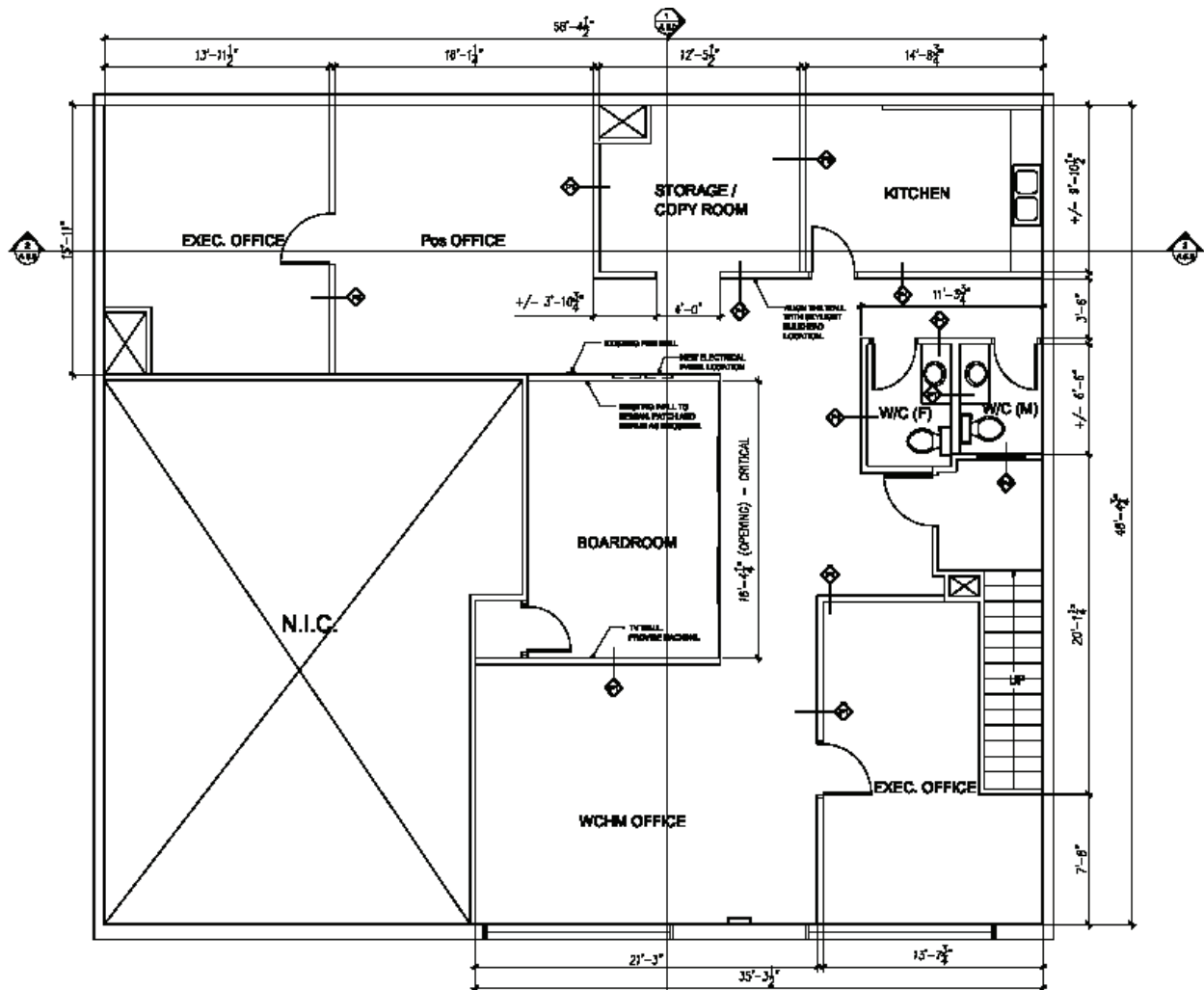
Guildford

Surrey

#206 - 9547 - 152nd Street



SITE PLAN



Rachel McGladery*
rachel@mcgladery.ca
* Personal Real Estate Corporation
604.290.8777

Joshua McGladery
joshua@mcgladery.ca
604.418.2690

RE/MAX Commercial Advantage



Disclaimer: Although the information contained within is from sources believed to be reliable, no warranty or representation is made as to its accuracy being subject to errors, omissions, conditions, prior lease, withdrawal or other changes without notice and same should not be relied upon without independent verification. RE/MAX Commercial Advantage

For Sale or Lease

Guildford

Surrey

#206 - 9547 - 152nd Street



Rachel McGladery*
rachel@mcgladery.ca
* Personal Real Estate Corporation
604.290.8777

Joshua McGladery
joshua@mcgladery.ca
604.418.2690

RE/MAX Commercial Advantage



Disclaimer: Although the information contained within is from sources believed to be reliable, no warranty or representation is made as to its accuracy being subject to errors, omissions, conditions, prior lease, withdrawal or other changes without notice and same should not be relied upon without independent verification. RE/MAX Commercial Advantage