



GLOBAL REMOVABLE BLoS AIRBORNE SATCOM

FOR C-130 AIRCRAFT

Designed as a complete and customizable upgrade, TRASC has been developed to provide a multi-functional and high-throughput capability to work with Ka-band solutions for transmitting voice and data for Roll-On / Roll-Off (RO/RO) C-130 airborne applications. This turnkey solution is **fully FAA STC and DoD certified** to work on all C-130A – J variants.

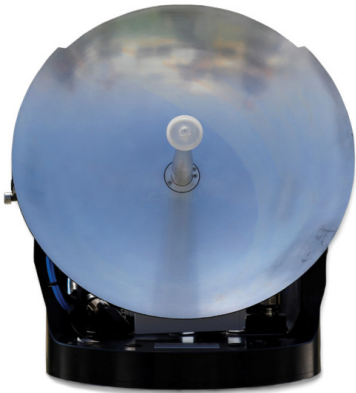
ANTENNA MOUNT FEATURES & BENEFITS

- Optimized Size, Weight and Power (SWaP)
- Mounting options: Multi-Purpose Hatch System (MPHS) and/or Multi-Purpose Shoulder Panel System (MPSPS)
- Rapid RO/RO installation (NO PERMANENT modification to the aircraft)
- Field repairable by certified technicians
- Ka-band SATCOM 12" Orbit MPT™ 30WGX

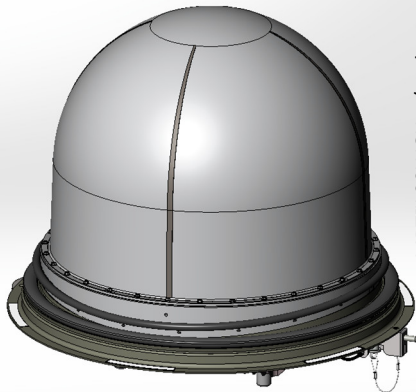
MPT™ 30WGX KEY FEATURES

- WGS Ready and MIL-STD-188-164C compliant
- Inmarsat GX Category 1 & 4 certification (in process)
- Compatibility with variety of modems
- User-friendly web user interface (WEB-UI)
- OpenAMIP and OpenBMIP protocol support
- Low power consumption
- Lightweight antenna design
- Stabilization using various types of INS/IRU
- Integrated RF electronics behind the aperture
- RTCA/DO-160G Certification





MPT™ 30WGX



MPT™ 30WGX w/ radome



PacStar 447
(Optional)



KIT INCLUDES

- R4 MPHS w/ radome and integrated MPT™ 30WGX Antenna
- Transit case w/ components (some listed below) and removable rack
- Dual-Input airworthy SynQor power supply
- G-MODMAN II modem
- Optional dual PacStar 447 router with KG-250 encrypter mount
- Accessory kit w/ laptop and all necessary cables
- Other configurations available depending on customer needs



*PICTURE IS REPRESENTATIVE ONLY

TECHNICAL INFORMATION

Ka Frequency:	B1: Tx 29.0-30.0 GHz, Rx 19.2-20.2 GHz
	B2: Tx 30.0-31.0, Rx 20.2-21.2 GHz
	B3 (opt.): Tx 27.5-31.0 GHz, Rx 17.7-21.2 GHz
Size (Diameter):	30 cm / 12"
Polarization:	Circ., 4-port, electrically switchable Co/ Cross-Pol (Tx/Rx independent)
G/T (Typ., at mid-band, at 30° elev., w/o radome) @ 36,000 ft:	12.5 dB/ °K
EIRP Psat @ mid-band (Typical, w/o radome):	52 dBW
EIRP Spectr. Density (EIRPsd) IAW FCC 47 CFR § 25.218:	>36 dBW/MHz
Weight:	<27.4 Kg / 60.5 lb
Ant. Installation Options:	As applicable (e.g., Tail / Hatch / Fuselage / Avionics Bay)

*PICTURES ARE REPRESENTATIVE ONLY

850.226.6913
info@r4-integration.com

+1.954.742.3831
sales.na@orbit-cs-usa.com

703.621.6450
info@inmarsatgov.com



US 9,016,631 B2,
 FAA STC # ST02495LA and DoD CERTIFIED

R4 MPHS SATCOM SOLUTION PART #
 0011A-870-S1-MP1-00-000-
 IN1-000-830-OR1

BR009