

FREE

*****ECRWSS****
Local
Postal Customer



Columbia County Shopper

920-348-3036
P.O. BOX 96
PARDEVILLE, WI

PRSR STD
ECRWSS
U.S. POSTAGE
PAID
EDDM RETAIL

DECEMBER 7, 2022

FOOD PANTRY DONATION SALE

Help Us Celebrate Our 20 Year Anniversary!

NOW THROUGH DECEMBER 17TH!

A Donation of 4 Non-Perishable Items or Minimum \$10 Cash
Receives 25% off your In-Store Purchase

Some Exclusions Apply



All Donations go to Sun Prairie and Portage Local Food Banks!
Forever Yours Jewelry Also Matches All Cash Donations!

Bonus Prizes and Give-A-Ways to be Announced on Facebook Through December

123 W Cook St. Portage 608-745-3330 | 211 East Main St. Sun Prairie 608-834-4100



EK MACHINE IS HIRING!

WALK IN INTERVIEWS DATES:

WEDNESDAY, NOVEMBER 30TH

WEDNESDAY, DECEMBER 7TH

WEDNESDAY, DECEMBER 14TH

WEDNESDAY, DECEMBER 21ST

6 AM - 4 PM

No appointment necessary.

We are recruiting for 1st, 3rd, and Weekend shifts -

Full time, Part time and seasonal.

671 S. Main Street, Fall River, WI 53932

www.ekmachine.com/careers

PHOTOS WITH MR. AND MRS CLAUS

WITH SPECIAL GUEST BUDDY THE ELF

SATURDAY, DECEMBER 3RD

PHOTOS 1-4 PM & BARN STORE OPEN 10 AM - 4 PM

Sadie Bee's Orchard

N3563 Co. Rd. DG, Fall River, WI • 920-484-8702



American
Red Cross

POYNETTE BLOOD DRIVE

Monday, Dec. 12

Dekorra Lutheran
Church

N3099 Smith Rd.
Poynette, WI 53955

12:00 PM-6:00 PM

Call 1-800-REDCROSS or visit
redcrossblood.org



QUALITY HANDCRAFTED
GIFTS MADE LOCAL

128 WEST COOK STREET
PORTAGE, WI

HOURS:

TUES - FRY 10-5

SAT 9-3

CUSTOMIZE THE PERFECT
GIFT FOR THAT SPECIAL
SOMEONE!

OVER 50 VENDORS
TO CHOOSE FROM

RANDOLPH HEALTH SERVICES ANNUAL CHRISTMAS SALAD & SANDWICH LUNCHEON & BAKE SALE



WHERE: RANDOLPH VILLAGE HALL
248 W. STROUD ST. RANDOLPH

WHEN: THURSDAY, DECEMBER 8TH, 2022
11 AM - 1 PM

COST: \$8 PER PERSON.
INCLUDES BEVERAGE AND DESSERT

All proceeds will go toward buying our residents' gifts
for Christmas. Come hungry, leave happy!

*If you would like to donate additional funds, please mak check
payable to Resident Council of Ranolph SNF or monetary donations
to be give to LeAnn or Tanya, Direct of Life Enrichments.

CD Special

FOR A LIMITED TIME ONLY!

7 MONTH, 13 MONTH OR 24 MONTH
Certificate of Deposit Special

4.10%*

APY

Hometown Bank

HTBWI.com



*Limited time offer available at our Poynette and Pardeeville locations only. Interest rates and Annual Percentage Yield (APY) valid as of November 21, 2022 and are subject to change at any time. \$10,000 minimum balance to open account and earn advertised APY. An active Hometown Bank checking account is required to qualify for this special rate. Certificate of Deposit accounts are a term investment. A penalty may be imposed for early withdrawal and fees may affect total earnings. If you choose to allow your CD to renew, you will earn the base interest rate at that time. See account terms and conditions for additional details.



Santa & Mrs. Claus
will be visiting the
Wyocena Public Library!

SATURDAY, DECEMBER 10TH
10 AM - NOON

There will be activities to participate in while waiting your
turn to see Santa! Grande Cheese will be providing
Cookies, Hot Chocolate, and Cheese.

Sponsored by the Friends of the
Wyocena Public Library and Grande Cheese

PARDEEVILLE AREA SCHOOLS 

2022-2023 Winter Sports Schedules

Girls Basketball - JV2/JV/Varsity

Dec. 6	@ Markesan HS	6:00	7:15
Dec. 13	vs. Randolph HS	6:00	7:15

Boys Basketball - JV2/JV/Varsity

Dec. 5	@ Fall River HS	6:00	7:15
Dec. 9	vs. Markesan HS	6:00	6:00 7:15

Wrestling

Dec. 10	Waunakee HS Invite- JV & V	9:45 AM
Dec. 15	Westfield HS Match	5:30 PM

High School Curling

Dec. 6	vs. Poynette - Girls Home / Boys Away
Dec. 13	vs. Portage - Girls Away / Boys Home

ALL LEAGUE GAMES START AT 3:45 PM

Please thank these area businesses for helping provide the 2022/23 Pardeeville Winter Sports Schedules!

This Week in History

1925:
Madison Square Garden opens with NHL game.

1973:
Kidnapped grandson of Getty billionaire

1791:
Bill of Rights is finally ratified.

1775:
Jane Austen is born.

1944:
Battle of the Bulge begins.

SOUTH CENTRAL TREE SERVICE, LLC

Call evenings 920-992-3669

Pruning, topping, removal, and stump removal. Insured.



"GOT MY HANDS FULL..."

EVERYBODY WANTS AMERICA'S FAVORITE HAM!

place your order now!

Swift's Premium HAM

Free at your dealers - SWIFT'S JOLLY Santa Claus Table Decorations

FINE DEALERS ARE FEATURING **Swift's Premium**

Blau Family CHIROPRACTIC & INTEGRATED WELLNESS

641 LATTON LANE PORTAGE, WI 53901 (608) 742-1300 blauchiropractic.com

Celebrating 27 years of excellent care, education, and service in the Portage Community!

We will help you reach your highest potential through:

- Corrective Chiropractic Care
- Pregnancy & Pediatric Focus
- Exercise & Life Style Education
- Advanced Adjunctive Therapies

Scan here to learn more

JOHNSON MECHANICAL

HEATING & COOLING

SALES & INSTALLATION 24 HR. EMERGENCY SERVICE

2601 Portage Rd. Portage / 608-742-4328 www.johnsonmechanicals.com

Don't get left out in the cold... CALL US FOR YOUR HEATING NEEDS!

Let's be naughty and save Santa the trip. -Gary Allan

FAR VIEW

Custom Meat Cutting & Packaging

BEEF • HOG • VENISON

~ Joseph Yoder ~
N1294 County Rd. FFF • Dalton

If you don't have an animal to process, we can get one for you!

In Poland and Ukraine, it's common for Christmas trees to be decorated with ornaments that look like spiders and spider webs.

The Wispy Willow

NOW OPEN 7 DAYS A WEEK WE DELIVER!

www.wispywillowpardeeville.com

- cut flowers • floral arrangements • bouquets
- potted plants • gifts • decor
- barn board signs • custom wood creations

133 N. Main St. Pardeeville, WI 53954 608-429-8300 • wispywillowpardeeville@gmail.com

CLASSIFIED AD ORDER FORM

1	2	3	4
5	6	7	8
9	10	11	12
13	14	15	16
17	18	19	20
21	22	23	24
25	26	27	28
29	30	31	32

\$8.00 for the first 20 words or numbers. 20 cents for each additional word or number.



Name _____ Phone _____

Address _____

City _____ State _____ Zip _____

Credit card # _____ Exp. _____ CV2 _____

Signature _____

Number of weeks to place ad _____ Deadline 4pm Wednesday before print.

Mail, dropbox, call, or email: Columbia County Shopper P.O. Box 96, Pardeeville, WI 53954
Payment dropbox located at 105 N. Main St. Pardeeville.
Email candace@columbiacountyshopper.com or call Candace at 920-348-3036.
All classified ads must be pre-paid before placement.

MILLER CHRISTMAS TREES

OPEN DAILY STARTING SAT. NOVEMBER 19TH!



TREEREX

**CUT YOUR OWN TREE
HOMEMADE WREATHS,
GIFT SHOP, CHESTNUT
ROASTING, HORSE
DRAWN WAGON RIDES,
& SANTA!**

Tree Shaking & Bailing!

608-206-6239

DELIVERY AVAILABLE!
Check our Website for Dates, Times, & Prices
www.treerex.com

N3763 Otsego Rd. Rio, WI 53960
Off Hwy. 16, between Columbus & Rio.

The Old Farmer's Almanac (from Native American tradition) calls the December full moon the "Cold Moon". This year's will be on December 7th!

**NO TIME TO
DESIGN YOUR OWN
BUSINESS CARDS?**

Contact us
about pricing!



**Columbia County
Shopper**

920-348-3036
candace@columbiacountyshopper.com



M&M Pet Supply

"Big and Small, We Feed Them All!"

Have you thought of your feathered friends lately?
Come see our 30+ styles of bird feeders! Great Christmas presents!

DECEMBER SPECIAL!
**\$1 OFF for every \$20 you spend
on a bird feeder purchase
*through the month of December**

Take advantage of our low priced **BLACK OIL
SUNFLOWER SEEDS** (while supplies last)

Check out our **Tingley boots, boot ice
grippers, and ice melt for Winter!**

W5111 Barry Rd. Dalton, WI 53926
(Next to Mischler's Country Store. Same Parking lot.)
Open: Mon. thru Wed., Fri., & Sat. 8 AM-5 PM
(Closed Thursdays & Sundays)

Happiness depends upon ourselves.
-Aristotle



STORAGE NEEDS?

**CHECK OUT THESE NEW UNITS
CONVENIENTLY LOCATED IN
THE HEART OF DOWNTOWN
PARDEEVILLE!**

Contains easily accessible indoor, secure climate controlled with various size units. We feature 24-hour access, power and lighting, security cameras, and online payment. No security deposit required. Military discount. Great place to store tools, Grandma's antiques, seasonal items etc...
Prices starting at \$59.00 per month.

Storage Inc. at 608-921-5920 or StorageInc.us



**Ginger Molasses
Cookies**

Ingredients:

- 4 1/2 cups all-purpose flour
- 4 teaspoons ground ginger
- 2 teaspoons baking soda
- 1 1/2 teaspoons ground cinnamon
- 1 teaspoon ground cloves
- 1/4 teaspoon nutmeg
- 1/4 teaspoon salt
- 1 1/2 cups shortening
- 2 cups granulated sugar
- 2 jumbo eggs
- 1/2 cup molasses
- sugar for rolling

Directions:

In a medium mixing bowl stir together flour, ginger, baking soda, cinnamon, cloves, nutmeg, and salt; set aside.

In a large mixing bowl beat shortening with an electric mixer on low speed for 30 seconds to soften.

Gradually add the 2 cups granulated sugar. Beat until combined, scraping sides of bowl occasionally.

Beat in eggs and molasses. Beat in as much of the flour mixture as you can with the mixer.

Using a wooden spoon, stir in any remaining flour mixture.

Scoop dough into 2" balls using a small cookie scoop. Roll balls in the sugar.

Place about 2-1/2 inches apart on a parchment paper lined cookie sheet.

Bake in a 350 degree F oven for 12 minutes or until cookies are light brown and puffed. (Do not overbake or cookies will not be chewy.)

Cool on cookie sheet for 2 minutes. Transfer cookies to a wire rack to cool.

Store in a tightly covered container at room temperature for up to 3 days or in the freezer for up to 3 months.

The Holiday Train is Coming to Columbus!

FRIDAY  **DECEMBER 9TH**



Columbus Amtrak Station
395 N. Ludington St.
Live Performances by
Alan Doyle & Kelly Prescott
9:15-9:45 PM
Warming Station
Amtrak Parking Lot 7 PM

Cash & Food Donations
Accepted for the
Columbus/Fall River Food Pantry!

Ad Provided By:



**Farmers & Merchants
Union Bank**
fmub.bank

Columbus - Fall River - Rio - Friesland - Juneau
920-623-4000

Member FDIC

Greatness is a road leading towards the glorious unknown.
-Charles de Gaulle

TRUCK FOR SALE



2.7 turbo, 325 HP, 400 lb-ft. torque, max towing 9,100 lbs. **LOADED** (Nav, Sync, Ford Connect, heated seats, 2 key fobs). Very clean. Interior Warranty included. Optional power train warranty transferrable at \$32,499.

2019 FORD F-150
91,400 MILES
\$29,499

CALL LYNN: 608-219-2022
Leave a message if no answer.



RANDOLPH HEALTH SERVICES

ASSISTED LIVING FACILITY SPECIAL!

FIRST MONTH FREE For any seasonal stay!

To inquire, contact Robert Foreman -
Admission Director at 920-326-3171 and
Mention the Special.

Randolph Health Services
502 S. High St. Randolph, WI 53956

★★★★★ **5-Star Facility** EEO/M/F/D/V

FALL RIVER & RIO SCHOOLS

2022/2023 WINTER SPORTS SCHEDULES

Rio Girls Basketball - Varsity & JV

Dec. 6	vs. Randolph HS	6:00
Dec. 13	@ Montello HS	6:00/7:15
Dec. 16	vs. Pardeeville HS	6:00/7:15

Rio Boys Basketball - Varsity & JV

Dec. 3	vs. Pecatonica HS	1:00/2:30
Dec. 5	vs. Green Lake/Princeton HS	6:00/7:15
Dec. 9	@ Randolph HS	6:00/7:15

Fall River Girls Basketball - Varsity & JV

Dec. 6	vs. Green Lake/Princeton HS	6:00/7:15
Dec. 13	@ Markesan HS	6:00/7:15

Fall River Boys Basketball - Varsity & JV

Dec. 5	vs. Pardeeville HS	6:00/7:15
Dec. 9	@ Princeton HS	6:00/7:15

Wrestling - Varsity

Dec. 6	@ Columbus HS	5:00
Dec. 17	@ Mount Horeb HS (Invitational)	9 AM

Please thank this area businesses for their sponsorship!

Ad provided by:



Farmers & Merchants Union Bank
fmub.bank

Member FDIC

575 Lowville Rd. Rio, WI 53960 637 S. Main St. Fall River, WI 53932
920-992-6100 920-484-6505

According to Guinness World Records, the world's tallest Christmas tree was a 221 ft. tall Douglas Fir decorated and put on display in Seattle, Washington in 1950. That's almost as tall as a 20 story apartment building!



SUNDAY, DECEMBER 11 at 2pm
A FUN musical gathering by the community, for the community!

General Admission Seating
Adults \$20 | Students \$10

All proceeds support programming at Portage Center for the Arts & The Boys and Girls Club-Portage!



TOGETHER We Can!
Together We Can raise the funds to establish a local Club Site for Portage youth!

ZONA GALE THEATRE
at Portage Center for the Arts
301 E. Cook Street | Portage, WI 53901
608-742-5655 | www.portagecenterforthearts.com

PEPPERMINT Sugar Scrub

Materials:

- 1/4 cup coconut oil
- 3/4 cup of sugar
- 5-10 drops of peppermint essential oil
- 1 tablespoon of red jojoba beads

baby food jar or small mason jar for storage
peppermint scrub labels
ribbon or twine

To make:

Grab a mixing bowl and add 1/4 cup of coconut oil with your 3/4 cup of sugar. You may need to put your coconut oil in the microwave for a few seconds to soften it up if its cold. Next add a tablespoon of red jojoba beads. These are optional and not 100% necessary for a sugar scrub.

Then add about 5-10 drops of peppermint essential oil to your mixture. Stir all of that together until it is well mixed and the jojoba beads are evenly spread. This amount will fill 2 baby food jars or one jam mason jar



Steve's Auto, Truck & Tire

107 E. Rio St. Rio • Steve Kueffer

CUSTOM Exhaust Pipe Bending

- Air Conditioning
- Brakes
- Major & Minor Repairs
- Tires

Monday thru Friday
8 AM to 5 PM
Closed Saturdays & Sundays

920-992-3577

If no answer, call 608-438-AUTO



LOOKING TO PRINT MARKETING MATERIALS?

Contact us about pricing!

Columbia County Shopper

920-348-3036

candace@columbiacountyshopper.com



Sunny Ridge Farm LLC. Lawn Mowing and Landscaping Snow Plowing and Salting

CALVIN KOHLER
calvinkohler@gmail.com
www.sunnyridgefarmllc.com

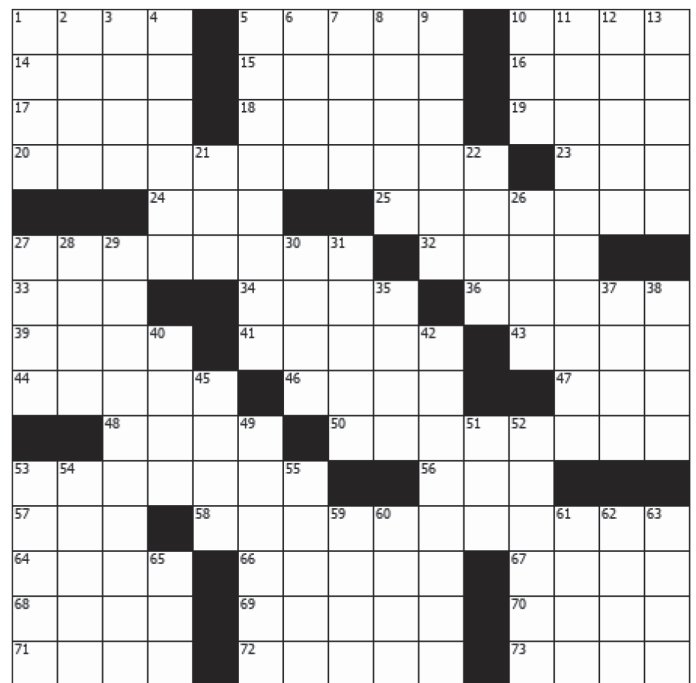
N8723 Fenske Rd.
Pardeeville, WI 53954

608-617-7301

Crossword Puzzle

Across

- Mall-crawl
- Religious observances, at times
- Perry's creator
- Volcano output
- Like the Las Vegas strip, at night
- Clark's love
- Guinness of "Star Wars"
- "A Bell for ___"
- Short lengthy lunches?
- Microcomputer's stronger kin
- Influential lobby
- Discomode (with "at")
- Proprietor's dread
- Nike slogan
- Seek the heights
- Former Bush press secretary Fleischer
- Type of belly and barrel
- Danish coin
- Rolls of C-notes
- Type of engine
- Ski lift
- Winter hazard
- Hammitt hound
- Org. with many schedules
- Cenozoic and Paleozoic
- Life or death, e.g.
- Repressed
- Salt
- Cat fancier from Melmac
- Blackjack shark
- Dam up
- Shot by Willie Mosconi
- Lake seen from the Rock and Roll Hall of Fame
- Boat in 27-Down
- Cornhusker State city
- Doubt-free
- Gp. headquartered in Brussels
- Conestoga, for one
- Ready for a drive



Down

- Diner offering
- Nimbus
- CB segue
- Sugar container
- Some manly haircuts
- Opera that opens in Memphis
- Sports figure?
- North African capital
- Thread holders
- Center of Dallas?
- Tournament format
- Many an October baby
- Gore Vidal piece
- Like an Emmett Kelly face
- Cranny companion
- Witch feature, often
- Hit film of 1975
- Caspian Sea feeder
- Unpleasant result
- Scintilla
- Lock of hair
- Winslet of "Titanic"
- Popeye Doyle, for one
- Gaelic tongue
- Vassal
- Poor defense for containing Jordan
- Baby duster
- Manatee
- Sigma follower
- Famous Papa's first name
- Member of a secret order
- Conservative beginning?
- Sophocles' forte
- Race on a strip
- Blue jack
- Test response
- Where the Shannon flows
- Clarinet or bassoon
- Chinese leader Zedong

See answers on Page 6

At Christmas play and make good cheer.

-Thomas Tusser



DON'T GET LEFT OUT IN THE COLD!

LET US INVEST IN YOU WHILE YOU GROW YOUR CAREER WITH US

Randolph Health Services has openings for RNs, LPNs, CNAs, and NAs and are currently offering:

- Impressive sign-on bonuses
- CNA Education
- Nursing Tuition Reimbursement
- We offer CNA classes & classes are paid for!
- We will pay you hourly for class hours if you join our team!
- Competitive wages!
- Paid Testing!

SIGN ON BONUSES AVAILABLE THROUGH THE END OF DECEMBER:

- \$2,000 Sign-on Bonus for FT/PT NAs
- \$5,000 Sign-on Bonus for FT CNAs
- \$4,000 Sign-on Bonus for PT CNAs
- \$10,000 Sign-on Bonus for RNs & LPNs FT and \$8,000 PT

*Don't forget we have CNA classes on site.

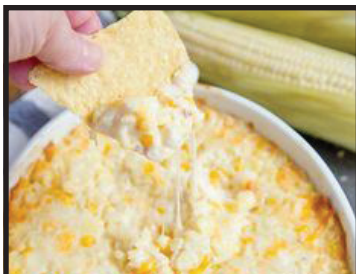
Look to us to be the positive change you need. ACT FAST!

DO NOT forget about our tuition reimbursement program!
Excellent Work Environment

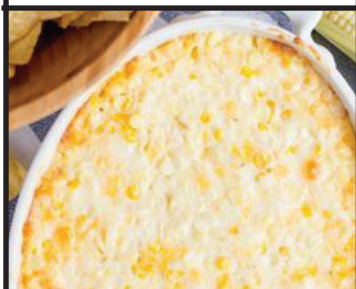
Contact: Sally Borzick
Continental Manor of Randolph Health Services
920-326-3171/ FAX: 920-326-3239

Randolph Health Services
502 S. High St. Randolph, WI 53956

★★★★★ 5-Star Facility EEO/M/F/D/V



HOT CORN DIP



Ingredients:

- 3-4 cups corn kernels fresh is preferred but canned or frozen are good too
- 4 ounces cream cheese room temperature
- 1/2 cup sour cream
- 1/2 teaspoon garlic powder
- 1/4 teaspoon kosher salt
- 4 ounces pepper jack cheese about 1 cup shredded
- 2 ounces sharp cheddar cheese about 1/2 cup shredded
- 2 ounces Monterey jack cheese about 1/2 cup shredded
- Cheddar or mozzarella cheese for serving (optional)

Directions:

If using fresh corn, you'll need about 4 ears to get 3-4 cups or corn kernels.

Leave the husks on and put the corn right in the microwave for about 3 minutes per ear.

Combine ingredients together in a large bowl. Pour into a small casserole dish (8" square or equivalent).

Bake at 350 degrees for about 30 minutes or until cheeses are melted and golden brown on top.

Serve hot with tortilla chips or crackers.

2022 Canadian Pacific
Portage Holiday Train
SATURDAY, DECEMBER 10TH
1:15-1:45 PM
Live Performances by Alan Doyle & Kelly Prescott!
At the CP yard adjacent to Averbeck Street, near the Curling Club area.
Accepting non-perishable food items & cash donations for the Portage Food Pantry!

Ad Provided By:
Community Bank of Portage
A Branch of Bank of Wisconsin Dells Member FDIC
www.dellsbank.bank

The Saturday Evening **POST**
December 28, 1957 - 15¢
We Took the Nautilus Under the Ice
By COMMANDER W. R. ANDERSON U.S.N.
NIXON'S MY BOSS
By His Private Secretary
EDIE ADAMS AND ERNIE KOVACS
By PETE MARTIN
A Complete Novelette
By Prentiss Combs

Getting KFC fried chicken for your Christmas meal is very popular in Japan. It's probably the closest food to turkey you can get there. It's thanks to a "Kentucky for Christmas!" marketing campaign from 1947. It offered a "Christmas dinner" that contained chicken and wine. After a huge success, KFC promoted it every year and they became associated with the holiday.

JOHNSON MECHANICAL
HEATING & COOLING
SERVICE, SALES, & INSTALLATION
CALL TODAY TO SCHEDULE YOUR SERVICE
2601 Portage Rd. Portage / 608-742-4328
www.johnsonmechanicals.com

Don't get left out in the cold...
CALL US FOR YOUR HEATING NEEDS!



**ARE YOU RETIRED OR WANT TO RETIRE?
CALL NOW!**

Full-service retirement and benefit planning.
If you do not want to lose money, **WE CAN HELP!!**

Safe Money Managers
Medicare, Health Insurance,
Long-term-care, Life Insurance

NOT FDIC INSURED

608-843-3300 | dtrumbower@wais4u.com
406 N. Main St.
Pardeeville, WI 53954



Wealth & Insurance
Strategies

Doug Trumbower
President



**WHITE CHOCOLATE
PEPPERMINT TRUFFLES**

Ingredients:

- 8oz bar of cream cheese
- 2 cups of powdered sugar
- 2½ cups white chocolate chips
- 1 tsp. peppermint extract
- ¼ cup crushed candy cane
- ¼ cup red candy melts

Directions:

Line a baking sheet with parchment paper. In a mixer, beat the cream cheese until smooth.

Slowly add in of powdered icing sugar until it all is incorporated into the cream cheese.

Using a double boiler, melt the white chocolate chips and add in the peppermint extract.

Pour the melted chocolate/peppermint mixture into the cream cheese and blend.

Transfer the mixture into a bowl, cover and place in the fridge until firm.

If you want to speed this up, put in the freezer but don't let it get frozen.

Scoop out golf-ball sized balls, roll in your hands and place onto the parchment-lined baking pan.

Repeat until all of the mixture is gone. Melt the red candy melts in the microwave as per directions.

Place into a piping bag and drizzle over the truffles. Feel free to use more white chocolate and red food coloring instead if you'd like.

Top with crushed candy cane and put in the freezer until serving!

A good beginning makes a good end.

-Louis L'Amour



**RANDOLPH
HEALTH SERVICES**

Randolph Health Services Has the Following Openings and We're Offering Competitive Wages!

FULL TIME DIETARY AIDE
5:30 AM-1:30 PM -
every other weekend \$16/ Hour

PART TIME DIETARY AIDES
Perfect for a high school student
looking to start their healthcare career.
After school and weekends
\$11.50 per hour

Call Shirley Schueler or Kari Schumacher at Randolph Healthcare for more information!
920-326-3171

PART-TIME HOUSEKEEPING
Flexible Hours!

Contact Betty Hoffman at Randolph Healthcare for more information!
920-326-3171

Randolph Health Services
502 S. High St. Randolph, WI 53956

★★★★★ 5-Star Facility EEO/M/F/D/V

December was originally the 10th month of the Roman calendar (until 153 BC). Hence, "December" comes from the Latin word decem, meaning "ten."

GOT WOOD? WE DO!!

A.R. WOOD has quality dry wood for your home needs.

Non-Split Wood - \$190/Truckload - \$280/cord
Split Wood - \$220/Truckload - \$320/cord

BY THE TRAILER LOAD

FIREWOOD LOGS
Softwood - 14'/\$200 - 24'/\$300
Hardwood - 14'/\$350 - 24'/\$550

LOGGING & POST CLEAN-UP: Call for Estimate.

ATTENTION FARMERS & LANDOWNERS:
We will also TRIM or remove trees & brush from fence lines!

Call Anthony at 608-235-5217 or 920-992-5585

S	H	O	P		F	A	S	T	S		E	R	L	E		
L	A	V	A		L	I	T	U	P		L	O	I	S		
A	L	E	C		A	D	A	N	O		S	U	B	S		
W	O	R	K	S	T	A	T	I	O	N		N	R	A		
				E	A	T			S	L	O	W	D	A	Y	
J	U	S	T	D	O	I	T		S	O	A	R				
A	R	I			P	O	R	K		K	R	O	N	E		
W	A	D	S		S	T	E	A	M		T	B	A	R		
S	L	E	E	T		A	S	T	A			I	R	S		
				E	R	A	S		S	E	N	T	E	N	C	E
M	U	F	F	L	E	D			T	A	R					
A	L	F			C	A	R	D	C	O	U	N	T	E	R	
S	T	E	M			C	A	R	O	M		E	R	I	E	
O	R	C	A			O	M	A	H	A		S	U	R	E	
N	A	T	O			W	A	G	O	N		T	E	E	D	

2		3		6						8
		7			5	1	3			
		5	9							
4			2	6	3				5	9
					9					
3	9				1	4	2			6
							4	2		
			1	8	4				3	
7					2		9			5

S

5	8	9	6	2	1	4	3	7
7	3	9	5	4	8	1	2	6
1	2	4	3	7	9	5	8	6
6	7	2	4	1	5	8	9	3
3	4	1	8	9	2	7	9	5
9	5	8	7	3	6	2	1	4
4	9	7	2	8	3	9	5	1
2	9	3	1	5	4	6	7	8
8	1	5	9	6	7	3	4	2

U

D

O

K

U

Christmas Trees

S	O	F	E	Q	Z	M	S	D	E	F	X	T	L	Q
Q	S	F	V	F	Y	V	P	O	T	H	V	P	E	P
N	I	E	T	Q	Y	W	R	U	I	K	H	Q	Y	A
R	O	T	R	V	H	K	U	G	H	J	A	D	L	S
H	V	R	N	P	W	U	C	L	W	E	D	T	A	O
H	I	Q	W	N	Y	S	E	A	A	G	L	Y	N	R
H	M	R	Z	A	G	C	W	S	X	U	J	B	D	E
D	N	A	R	G	Y	E	F	R	A	S	E	R	O	D
Z	S	D	R	G	U	H	D	B	C	S	V	Y	V	N
O	N	E	F	L	C	O	L	A	A	S	P	E	I	O
T	D	C	B	T	A	W	N	U	P	L	T	P	K	P
O	P	K	O	F	M	A	E	N	I	P	S	O	T	Z
L	N	C	G	E	A	G	B	F	S	C	Y	A	C	L
K	S	L	J	N	V	I	R	G	I	N	I	A	M	S
E	L	O	P	E	G	D	O	L	Q	O	Q	C	W	M

- | | | |
|----------------|----------------|------------------|
| SPRUCE | BALSAM | VIRGINIA |
| FIR | DOUGLAS | NORWAY |
| PINE | CANAAN | LEYLAND |
| CYPRESS | GRAND | RED |
| CEDAR | NOBLE | LOGPOLE |
| BLUE | WHITE | SCOTS |
| FRASER | SCOTCH | PONDEROSA |

Classified Ads - \$8/week for the first 20 words or numbers than 20 cents for each additional word or number. Deadline Wednesday @ 5 PM.

Sale

INSIDE SALE-two floors. December 3rd and 4th, 10:00 to 5:00. The Dusty Rose, N4141 Thompson St. Doylestown. Baby Bonanza featuring everything baby. Blankets, bouncers and more. Clothes. Puzzles and books. Craft materials: yarn, fabric, beads. Smurf glassware and Figurines. Some furniture.

For Sale

FOR SALE: MTD Yard Machines Snow Blower 5/22. \$350. Call: 608-219-2022

FIREWOOD FOR SALE: Oak full cord \$220, mixed hardwood full cord \$170, soft wood full cord \$130. Split and seasoned. Delivery \$20 per cord. Call Ron: 920-319-1704.

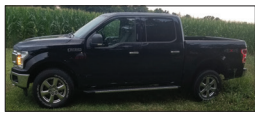
Puppies for Sale

PUPPIES FOR SALE: AKC Springer Spaniel puppies. 3 Males left. LVR/WHT 7 wks old. \$550. Call: 715-927-8976

PUPPIES FOR SALE: Blue Heeler cross puppies (ready now) & Chihuahua puppies (ready 12-29-22). Perry Bontrager W5499 Barden Rd. Pardeeville, WI 53954

Vehicles for Sale

TRUCK FOR SALE: **LOADED** 2019 Ford F-150 (black). 91,400 miles. 2.7 turbo. Loaded (Nav, Sync, heated seats, 2 key fobs). Interior Warranty included. \$28,999. *Serious inquiries only.* Call Lynn: 608-219-2022. *Leave a message if no answer.*



Services

South Central Tree Service, LLC. Pruning, topping, removal, and stump removal. Insured. Call evenings 920-992-3669.

custom coatings

Painting and staining, (interior or exterior), windows, doors, and decks. Pressure washing house and more. References. Insured. Free estimates. Check us out on facebook. Call Mike at 608-617-7884.

I specialize in complete tree and stump removal. Servicing Wyocena, Rio, and Fall River. Call Clarence Gingerich at 920-988-0095. *Leave a message if no answer.-*

WOODS CLEANUP: Fence-line cleanup after logging. Call Ron: 920-319-1704.

Affordable tree trimming and removal. Inquire at Peter-sheim Engine. 3 miles west of Cambria - W3298 Cty Hwy P. Cambria.

Community

Second Harvest Mobile Food Pantry

318 S. Main St. Pardeeville. *The December date has been rescheduled for Thursday, December 22nd at 3:30 PM.*

Wyocena Community Helping Hands Pantry

Open first 3 Mondays, Tuesdays and Wednesdays of the month from 10 AM-12 PM. 165 E. Dodge St. Wyocena, WI

COLUMBUS/FALL RIVER FOOD PANTRY

Serving Columbus and Fall River. Located in the back of the Columbus Senior Center, 125 N. Dickason Blvd. Columbus. For those in need of food during the month of December, please contact Columbus United Methodist Church at 920-623-3625 to schedule an appointment.

Call the FoodShare Helpline: 1-800-362-3002.

Deadlines

All ads are due by Wednesday 5 PM the week before the paper is dated.

Mention Promo Code 2022PS5 at time of scheduling for 5% off Restoration & Repair.



CHIMNEY CLEANING
Restoration, Repair & Lining

Mention Promo Code 2022PS10 for \$10 off Chimney Cleaning

DAIZY SWEEPS
Mention this ad to receive \$1.00 off a bag of BBQ Pellets.

"Your Safety is Our #1 Concern" Call for Premium BBQ, Heating and Horse Bedding Pellets!

Locally owned and operated by two generations since 1979
920-318-6518 • 920-386-9563
www.daizysweeps.com / check us out on Facebook

DID YOU KNOW?

"Jingle Bells" was written for Thanksgiving, not Christmas. The song was written in 1857 by James Lord Pierpont and published under the title "One Horse Open Sleigh". It was supposed to be played in the composer's Sunday school class during Thanksgiving as a way to commemorate the famed Medford sleigh races.

Bart Achterberg
President/Broker



Phone: 608-333-FAST
Bart@Fastactionproperties.com
WWW.FASTACTION PROPERTIES.COM



1626 Kings Mill Way #101,
Madison, WI 53718

CANALES FLOORING
We are out to floor you!

920-626-6350 - Phone
608-219-5095 - Cell

FINANCING AVAILABLE

Monday-Thursday: 10 AM-5 PM
Friday: 10 AM-3 PM
Saturday: By Appointment 9 AM-12 PM
W4730 Hwy. 16 Rio, WI
canalesflooring@yahoo.com
www.canalesflooring.com

Gift Wrap Idea!

Use kraft paper and reclaimed sheet music for a personalized, vintage look to your wrapping paper.

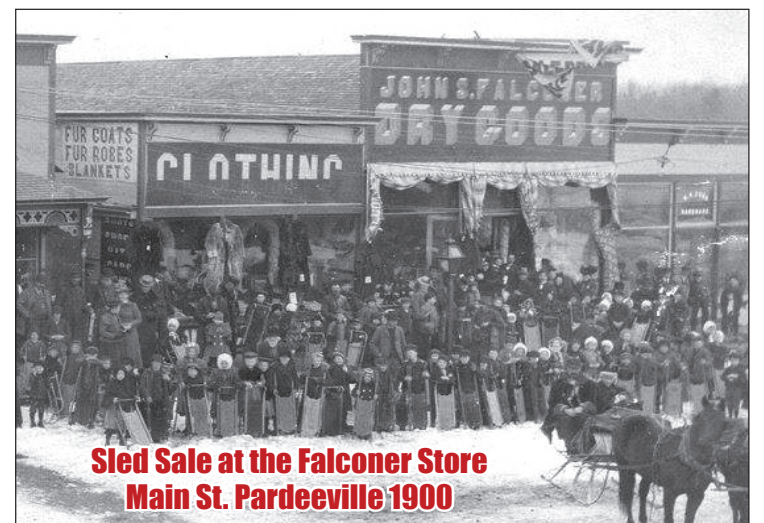


COLUMBIA COUNTY SENIOR DINING

- Nov. 28** - Glazed Ham, Calico Bean Cass., Broccoli, Ice Cream Cup, Applesauce, and Sl. Bread.
- Nov. 29** - CLOSED
- Nov. 30** - Chicken Patty, Cacciatore, Bk. Potato, Veggies, Tr. Fruit Salad, PB Cookie, and Sl. Bread.
- Dec. 1** - Pork Loin, Mashed Pot., Sp. Sal. w/Rasp. Vin., Birthday Cake, Apples, and Dinner Roll.
- Dec. 2** - BBQ Meatballs, Red Beans & Rice, Veggies, Tapioca Pudding, Fr. Gelatin, and Sl. Bread.

Pardeeville: 119 N. Main St. Pardeeville 608-617-1821
Portage: 111 E. Mullett St. Portage 608-742-9211
Columbus: 125 N Dickason Blvd. Columbus 920-763-2124
Poynette: 106 S. Main St. Poynette 608-635-2122

In 1843 Henry Cole asked an artist to make a card for him to send out at Christmas. It featured a family sitting around a dinner table and a Christmas message. The idea seemed to catch on and soon many wealthy Victorian families were sending out their own cards. Victorian children were encouraged to make their own cards and there is even evidence that Queen Victoria had her own children do this.



Sled Sale at the Falconer Store Main St. Pardeeville 1900

It doesn't matter what you believe just so long as you're sincere.

-Charles M. Schulz

Worship with us
Sundays at 8:00am and 10:30am
9:15am Sunday School
Thursdays at 6:30pm

Lutheran School
K - 8th Grade and PreK

505 E. LaFollette St.
608-429-3636

Online at stjohnspardeeville.org



ST. JOHN'S
Lutheran Church & School
PARDEEVILLE

Bring Joy to a Child in Need: TOYS FOR TOTS

Help us brighten a child's life. Please drop off unwrapped toys in the donation box located in our lobby.

Now Through December 15th



105 N Main Street, Pardeeville

For more information, contact your Edward Jones Financial Advisor.

Edward Jones cannot accept gift cards, cash or checks as donations.

edwardjones.com Member SIPC

Tom Romaniak, CFP®, AAMS®
Financial Advisor

105 N Main Street
Pardeeville, WI 53954
608-429-1303



CEA-9646CA



PARDEEVILLE AMERICAN LEGION AUXILIARY UNIT 215 RECEIVED THE 2021-2022 VETERANS AFFAIRS & REHABILITATION 'ANCHORED IN SERVICE' AWARD

Amy Luft, American Legion Auxiliary 2nd District President Wisc., notified the Auxiliary of the Unit Award in Aug. 2022. The basic informal criteria was the completion of the annual Narrative Report form showing significant service to our veterans, with additional details of the activities, events, and projects. The units were judged on the significance of their work (i.e. hours of service to veterans, donations to VA facilities, and other activities and projects focused on veterans).

The unit reported 1,100 hours of service to veterans, cards to veterans, donations to VA facilities, and 3 quilts of valor. Then President Maude Bortz attached a narrative report which gave details about their work. This work was impressive, primarily through the pandemic.

Last membership year continued to be challenging for our units because of the pandemic. However, unit leaders like Maude Bortz continue to focus on new and creative ways to CELEBRATE OUR VETERANS, MILITARY, AND THEIR FAMILIES!

JOIN OUR TEAM

We're Hiring!

CERTIFIED STAFF POSITION

Elementary School Special Education Teacher

PASD is seeking a qualified candidate to add to its Elementary Special Education Department for the remainder of the 2022-2023 school year, with the possibility of continuing into the 2023-2024 school year. This position is part of a two person team. Apply through WECAN.

Start Date: Immediately

SUPPORT STAFF POSITIONS

Full & Part-time Special Education Assistant Positions

PASD is looking for special education assistants at all building levels. These positions are full-time (8 hours) or part-time (5.5 hours) daily. The special education assistant is responsible for assisting in the supervision, care, and tutoring of special education students in the regular education classroom or in a resource classroom, and monitoring student behavior during the non-classroom time. Starting salary of \$12.20 an hour.

Start Date: January 2023

Substitutes Needed at Pardeeville Schools

The Pardeeville Area School District is always in need of substitute teachers, educational assistants and custodians. These positions provide a flexible schedule and a great additional source of income. Specific requirements for these positions can be found on our website.

Start Date: Immediately

To Apply

Applications can be found on our website at www.pasdwi.org under Employment Opportunities, or can be picked up at the school's District Office. Applications should be sent to Pardeeville Area School District, 120 Oak Street, Pardeeville, WI 53954, or emailed to Jane Clemmons at clemja@pasdwi.org. Questions? Contact Jane Clemmons at 608-429-2153 ext. 212.

CO-CURRICULAR POSITIONS

Varsity Football Coach • JV Baseball Coach MS Softball Coach • MS Track Assistant

Interested in applying? Send a letter of interest in writing and contact information of three references to Alex Hammerschmidt, Activities Director, Pardeeville High School, 120 Oak Street, Pardeeville, WI 53954, or email to hammal@pasdwi.org

Start Date: February 2023



For the most up to date job postings and additional information about these positions use the QR code or visit our website at www.pasdwi.org/district/EmploymentOpportunities.cfm

Culver's
2733 New Pinery Rd
Portage, WI

Breakfast with Santa

Saturday, December 10th
8:00-9:00 AM
www.portagewi.com

Tickets are required for this event (NO fee for breakfast). Please bring a non-perishable food item for the food pantry. Breakfast seating will be from 8-9 AM. Limited seating. To register, contact the Portage Chamber office at 608-742-6242 or through portagewi.com

Arrive by 8:30AM to get your photograph with Santa. Please bring your own camera.

Ad Provided By:



416 E. Wisconsin St.
Portage, WI 53901

Quality Service and Family Owned
Since 1935

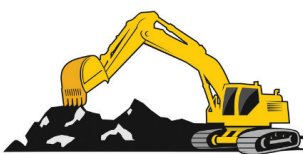


American Red Cross

PARDEEVILLE BLOOD DRIVE

Wednesday, Dec. 7
Pardeeville M/S
120 S. Oak St. Pardeeville
10:00 AM-3:00 PM

Call 1-800-REDCROSS or visit redcrossblood.org



DENURE EXCAVATING LLC

RIO, WI

- Excavating - Septic Systems
- Water Lines - Building Site Work- Driveways & Culverts
- Fence Line Clearing
- Gravel, Sand, & Black Dirt

920-992-3571

W4499 King Rd.
Rio, WI 53960

Lis. #MPSRW-22410

Viking Entertainment & Dells DJ

Bob Will Make Your Party/Dance a Fun Event

FUN IS WHAT WE DO

"Bob Viking, Wisconsin's Premier Entertainer"

Bob Viking Entertainment offers music, professional MC, photo booth with all the props, Family Feud Game Show, Name that Tune, and trivia/contests shows. Ask about these different shows for your event.

viking@palacenet.net dellsdj.com 608-335-3009



PAUL'S DEER PROCESSING
608-429-2921

We also take deer hides.

Your business is deer to us!

Family owned and operated by Doug & Ruth Paul and family.

W4306 Vaughan Rd Cambria, WI