

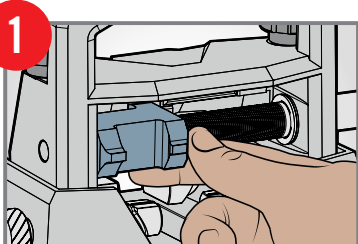
# MASTER SIGHT PUSHER™

PRECISION ENGINEERED UNIVERSAL SIGHT CHANGER

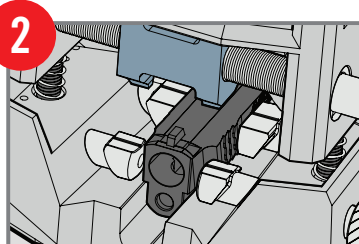
## USER MANUAL



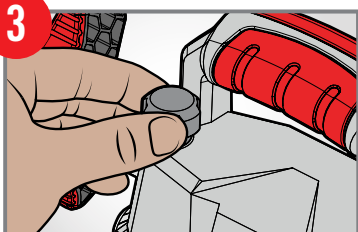
## INSTRUCTIONS OVERVIEW



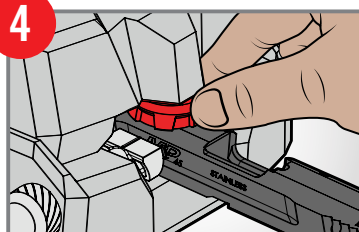
Select applicable Universal Press Block™ face and return block to center of push rod.



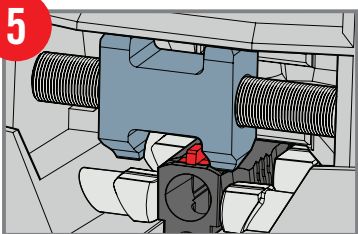
Align clamp guidelines with center of dovetail and secure slide in cradle.



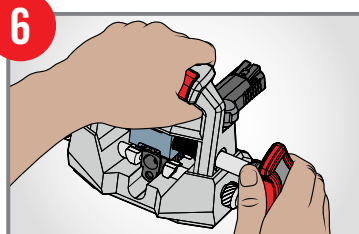
Lower Universal Press Block to the appropriate height.



Snugly tighten vertical stabilizer to hold pistol slide in place.



Confirm alignment with Universal Press Block and sight.



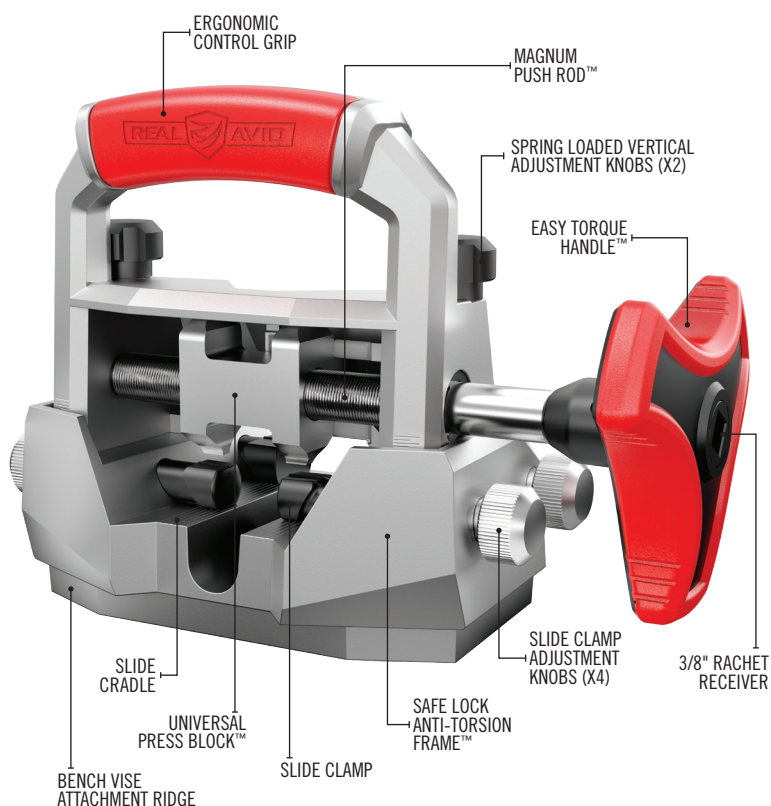
Turn Easy Torque Handle™ and push sight through dovetail slot.

***WARNING: TO AVOID DAMAGE READ USER MANUAL AND REFER TO YOUR GUN MANUAL PRIOR TO USE.***



# MASTER SIGHT PUSHER

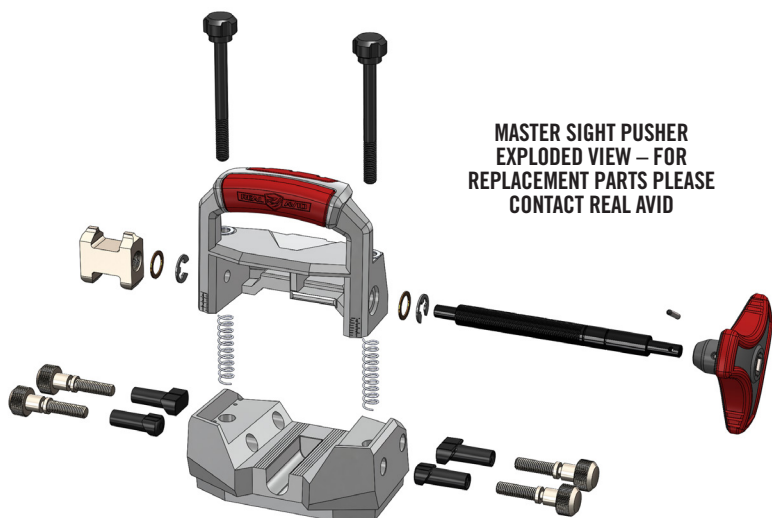
PRECISION ENGINEERED  
UNIVERSAL SIGHT CHANGER



**EASILY AND SAFELY  
CHANGE PRESS-FIT  
SIGHTS ON PISTOLS.**

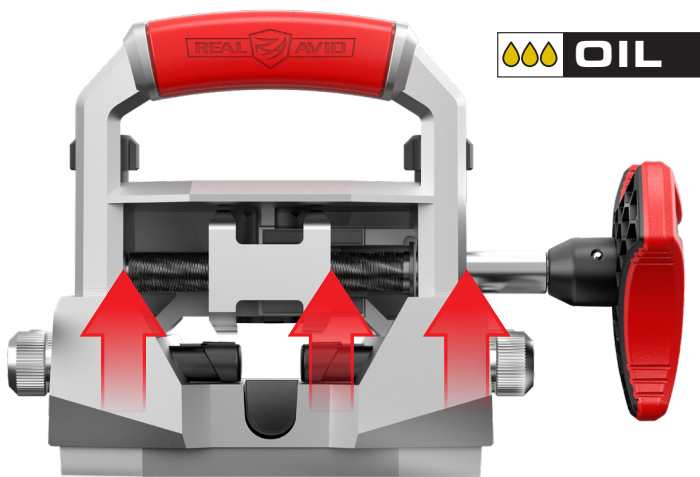
## CARE & MAINTENANCE

Store in a cool dry location. Keep all threads and rotating interfaces oiled.



## BEFORE YOU GET STARTED

**LUBRICATION:** Before each and every use, make sure these locations are well oiled. This lubrication is important to increase efficiency and reduce wear.

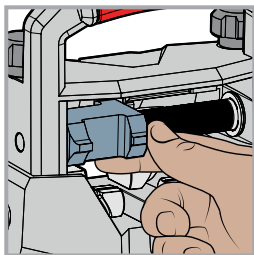


**APPLY OIL TO BEARING AND THREAD  
SURFACES PRIOR TO EACH USE**

**GUN SAFETY IS A PRIORITY.** Before working on any firearm, make sure the gun is unloaded, the chamber is empty, and the gun is pointed in a safe direction.

# CHANGE YOUR SIGHT — DO IT YOURSELF. INSTALL PRESS FIT SIGHTS IN 6 EASY STEPS.

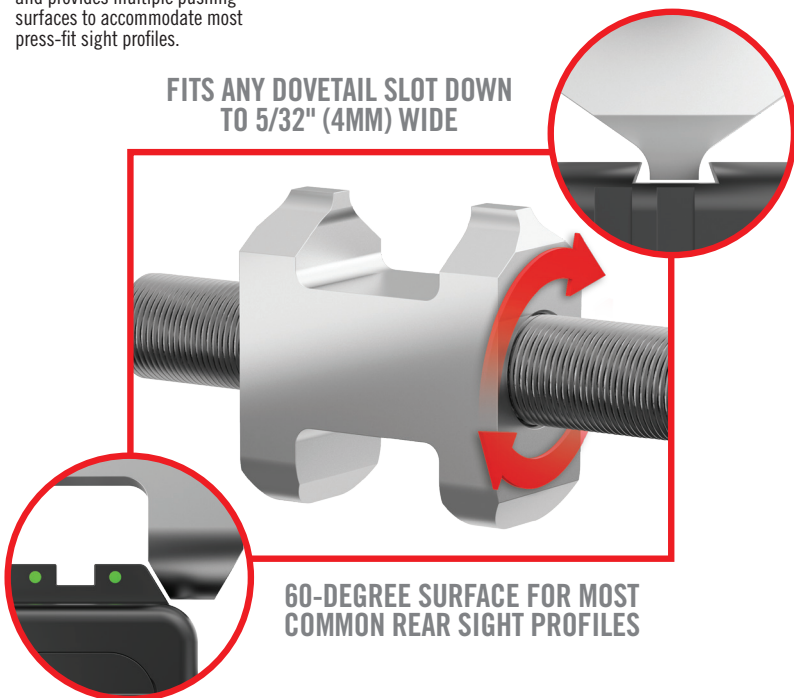
## 1 SELECT APPLICABLE PRESS BLOCK FACE AND RETURN BLOCK TO CENTER OF PUSH ROD.



Universal Press Block is reversible and provides multiple pushing surfaces to accommodate most press-fit sight profiles.

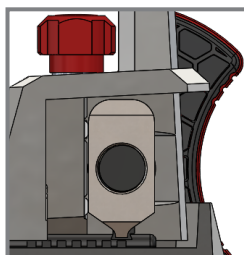
Select appropriate Universal Press block orientation. If you would like to use the opposite surface on the Press Block, rotate the crank clockwise to transport the Press Block all the way to the left. At this point, the pusher block should rotate freely without the support wall behind it. With the correct side selected, return the Press Block to the center by rotating the Easy Torque Handle counter-clockwise.

**FITS ANY DOVETAIL SLOT DOWN  
TO 5/32" (4MM) WIDE**



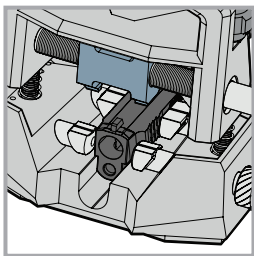
**60-DEGREE SURFACE FOR MOST  
COMMON REAR SIGHT PROFILES**

If you have a low-profile sight, or one with a small surface to push on, it is recommended to use the 4mm wide tooth side of the Universal Press Block. This narrow tooth can reach down inside most dovetails, in order to align the Press Block as low as possible to the sight.



2

## ALIGN CLAMP GUIDELINES WITH CENTER OF DOVETAIL AND SECURE SLIDE IN CRADLE.

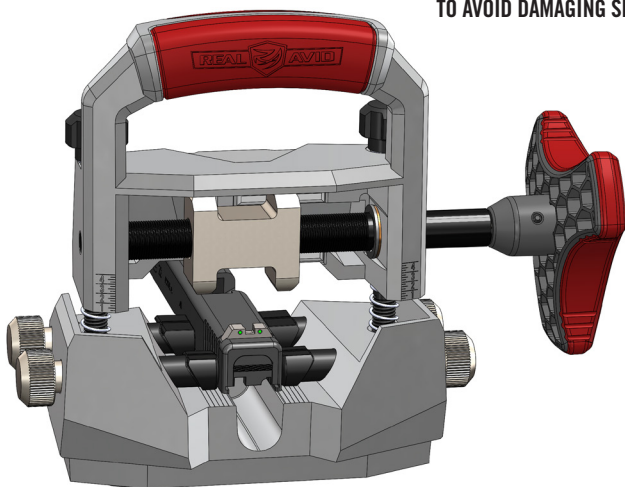


Versatile slide cradle accommodates most makes and models of striker-fire and 1911 pistols.

Loosen the two vertical frame bolts to allow for height clearance and help with visibility. Be sure to check the Hold Down Screw, to make sure it is up all the way. Mount pistol slide into slide frame.

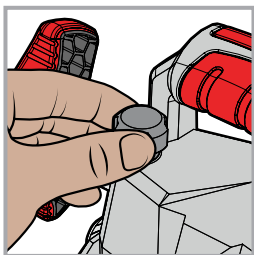
Center the slide and align front to back, so the sight to be removed or installed is directly under the press block. Tighten the four side clamp knobs to apply a light hold on the slide. This should allow fine tune position adjustments of the slide as you proceed.

**MAKE SURE PRESS BLOCK IS CORRECTLY ALIGNED WITH DOVETAIL SLOT AND THAT THE SLIDE IS PARALLEL TO THE LINES IN THE SLIDE CRADLE TO AVOID DAMAGING SLIDE**



3

## LOWER UNIVERSAL PRESS BLOCK TO THE APPROPRIATE HEIGHT.



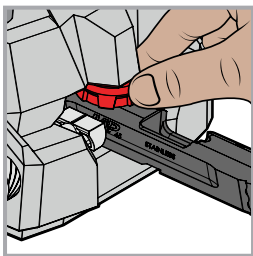
Turn both frame bolts simultaneously to avoid binding and keep upper frame level

Use extreme caution when lowering the press block down to its optimum height. It is very easy to misalign features and cause damage to your gun's slide. Using a bright shop light and magnifying lens is highly recommended.

Lower the Upper Frame carefully into position by tightening the two frame bolts simultaneously. The height of Universal Press Block should be predetermined: above the top of slide, or below the slide top and down inside the dovetail. During this process you should make any final front-to-back adjustments to the clamped position of the slide and apply final tightening to the slide clamp knobs.

4

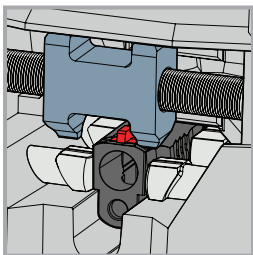
## SNUGLY TIGHTEN VERTICAL STABILIZER TO HOLD PISTOL SLIDE IN PLACE.



Once upper frame is moved to the correct position lower the Vertical Support Screw to the top surface of the slide to completely lock into place prior to pushing sight.

5

## CONFIRM ALIGNMENT WITH UNIVERSAL PRESS BLOCK AND SIGHT.



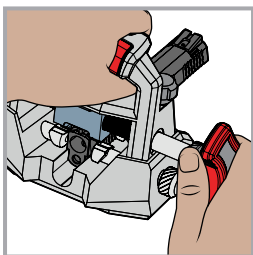
Use this step to ensure everything has remained aligned during the locking process and that the press block remains in correct alignment with the sight or dovetail slot and completely clears the slide to prevent damage.

Special Note: when utilizing the 4mm tooth surface to push within the dovetail slot use extreme caution when lowering the Universal Press Block down to this height. It is very easy to misalign features and cause damage to your gun's slide.

**\*WARNING\*** Failure to align slide properly will cause damage

6

## TURN EASY TORQUE HANDLE™ AND PUSH SIGHT THROUGH DOVETAIL SLOT.



The oversized and comfortable Easy Torque Handle makes turning a breeze.

Turn Easy Torque Handle either clockwise or counterclockwise dependent on the direction you are pushing the sight. Handle should turn easily and you should not feel any binding. If you perceive over-resistance re-check alignment and clearance prior to proceeding.



## WARRANTY

**LIMITED – 3 YEAR WARRANTY:** Master Sight Pusher™ is guaranteed free of defects in materials and workmanship for three years from date of original purchase. Real Avid will replace or repair any product that proves defective upon our inspection. Use of the Master Sight Pusher for anything other than its intended purpose is considered misuse and voids this warranty. For warranty service, send the product, proof of purchase with shipping paid, along with an explanation of the defect, as well as your name, address and phone number to the address below. This warranty excludes damage resulting from deliberate or accidental misuse. Warranty does not cover rust, stains or corrosion, or normal wear and tear. Repair or replacement is the exclusive remedy under this warranty. Real Avid, its partners and affiliates are not liable for incidental or consequential damage resulting from use. Some states do not allow exclusion or limitation of incidental or consequential damages; therefore, the above exclusions may not apply to you. This warranty gives you specific legal rights, and you may have other rights, which vary from state to state.

As a convenience to you, we have provided additional slide clamps. These parts are purposefully manufactured from plastic to reduce the possibility of scratches to your slide. The high strength resin is tough, but not indestructible from excessive forces. They are meant to fail before too much force is applied to the sight pusher or to your slide. If you notice continual deformation of these slide clamps, consider improving the fit of new sights by filing their edges. Sights that have been factory installed with hydraulic presses are often damaged during the removal process and are best suited to be cut or hammered out. We recommend not exceeding 200 in-lbs of torque while using the 3/8" drive. Following these guidelines and keeping the threaded drive and bearing surfaces well oiled will ensure years of trouble-free use.

## NOTES:

---

---

---

---

---

---

---

---

---

---



**TO FRIENDS AND CUSTOMERS:** As the owners of Real Avid, authenticity isn't just a strategy here. It's a guiding philosophy. It arises out of our faith and personal relationships with Jesus Christ. We know that our creativity and success ultimately comes from Him. He cares about each of us and about our customers. We're not perfect, but we are committed to following Him in our personal and business lives.

We look forward to growing our relationship with you and continuing to earn our place.



Revo Brand Group, LLC  
5480 Nathan Lane North, Suite 120  
Minneapolis, MN 55442 USA

**RealAvid.com • 800-286-0567**