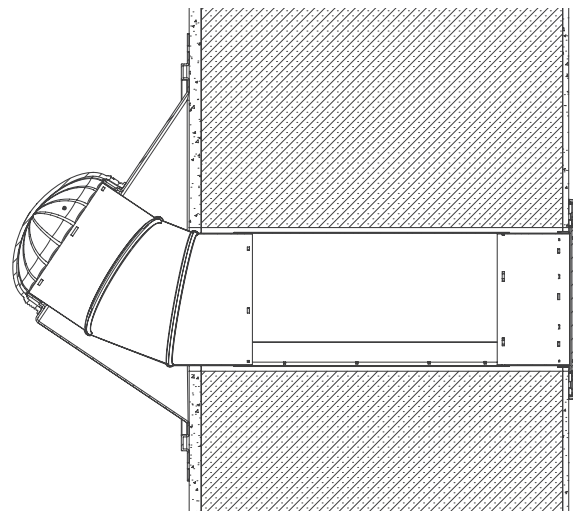
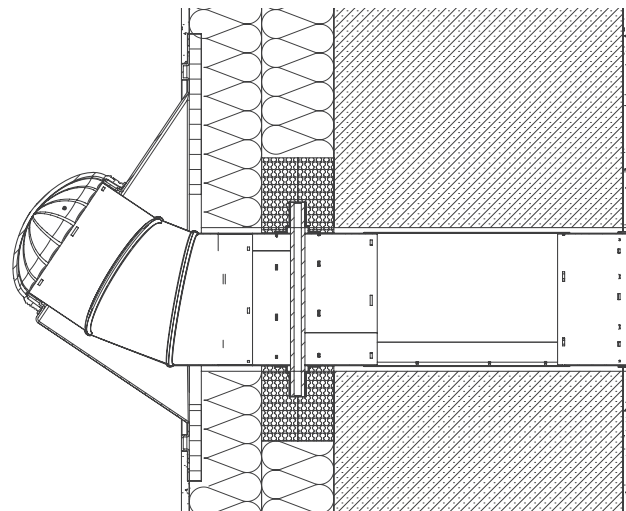


An example section view of the installation of Lightway F series Crystal HP system on a brick wall. The crystal glass daylight collector on the outside will not degrade over time, it will not turn grey, and can not be scratched. As is the case with normal sun tunnels, which have a dome made of plastic materials.



An example section view of the installation of Lightway F series Crystal HP system on a brick wall, but also insulated with patented Lightway Blue Performance thermal unit, which acts as a barrier against the formation of condensation and also guards against heat losses and heat gain. Without Lightway Blue Performance unit, dangerous condensation of water can appear.



Types of Lightway Crystal F series

- **Lightway Crystal F 200 HP**
- **Lightway Crystal F 300 HP**
- **Lightway Crystal F 400 HP**
- **Lightway Crystal F 600 HP**

Why choose Lightway Crystal F series?

- **Ultimate performance of natural daylighting in your building**
- **Lightway F Series brings natural daylight from the sun and during sunny, overcast and rainy days!**
- **If you need warranty 25 years for reflective tube and 100 years for crystal glass Optical daylight collector**
- **Lightway Crystal glass optical collector outside. No degradation of the crystal! No dust on the surface! No scratches on the glass!**
- **Reflective layer is made from 99,8% pure silver and 7 reflective nano layers from silica and sterling silver. Reflectivity is almost 100%**
- **Inside your rooms Lightway glass diffuser spreads the daylight equally within corridors, bathrooms, kitchens, playrooms, stairwells**
- **When patented Lightway Blue Performance thermal unit is in use, there is no heat losses in the winter. No heat gain inside the building in the summer.**
- **Prevention of condensation of water inside or outside Lightway sun tunnel. U 0,6 W/m²K**
- **Whilst natural daylight can come in, you have complete privacy from your neighbours with one directional daylight.**

Note: use of visualization in this brochure may vary from actual design

Lightway s.r.o.
Za trať 235, Chrástany u Prahy
252 19 Praha - Západ
info@lightway.cz
tel. +420 235 300 694
Czech republic

Lightway Daylight Ltd
Crown House, 37 High Street,
East Grinstead, RH19 3AF
info@lightwaydaylight.co.uk
+44 333 20 20 976
United Kingdom

Lightway Daylight LLC
tel. 888-250-4191
Versailles, KY, USA
www.lightwaydaylight.com

www.lightway.cz
www.lightwaydaylight.co.uk
www.lightwaydaylight.com

lightway®

Member of **JACOB**® LONDON

lightway®
SUN TUNNELS

Customers say that
Lightway crystal
sun tunnels are the
best in the world

LIGHTWAY
F-SERIES
CRYSTAL GLASS
SUN TUNNEL FOR
THE SIDE WALL

Lightway has been
producing crystal
sun tunnels since
1998

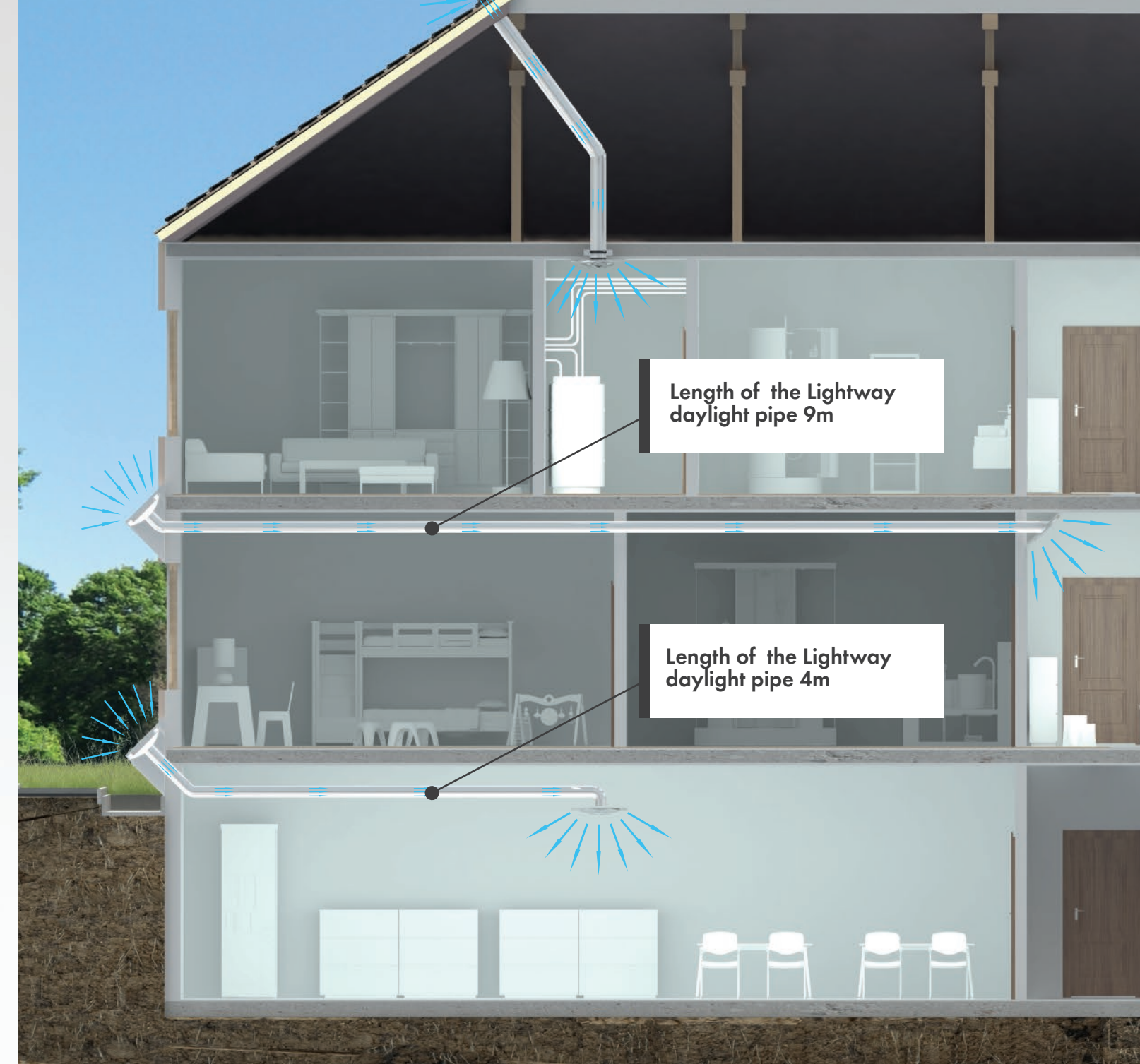
Crystal glass optical collector of daylight fixed to the outside wall. The warranty is 100 years. It does not age, it does not turn gray, and it does not become milky or get scratched, as is the case with other sun tunnels, which have domes made of plastic materials.

Daylight Diffuser in a room into which daylight is introduced using a mirror daylight pipe. It is made of sodium-potassium glass and does not change colour, does not age, does not lose its power of light transfer, and is not scratched like the diffusers of other sun tunnels, which are made of plastic materials. Plastic diffusers distort the natural colours of daylight and, as they age and thus prevent daylight from shining into the room!

The Lightway® daylight pipe consists of 7 nano-layers, one of which is sterling silver. As a result, it achieves almost 100% reflectance of all daylight colours evenly. Therefore, daylight can reach a distance of 120 meters and can turn up to 90 degrees a total of 5 times along the way. It has a 25-year warranty. It does not distort the colours of daylight, as is the case with other sun tunnels, which have polished aluminum pipes or even have a polymeric adhesive backed reflective film laminated on aluminum sheets. On the pipes made with reflective film, the film peels off over time and has a noticeable orange peel reflection. Such a surface does not conduct daylight well and the sun tunnel is not effective. In addition, it loses all light transmission.

Blue Performance is an insulation component, protecting against water condensation and heat losses in winter, and against heat gains in summer.

Normal sun tunnels are at risk of the possible condensation of water vapor inside the daylight-pipe, because inside the daylight is heated and as it continues out of the room, it cools and dangerous condensate begins to flow from the sun tunnel to the floor or dampen the sidewall. Lightway® has therefore patented a thermal insert component called Blue Performance for its sun tunnels, which prevents such inconveniences and potential hazards.



Length of the Lightway daylight pipe 9m

Length of the Lightway daylight pipe 4m

A frequent wish of customers in cities who want more healthy sunlight in their flats, homes, or offices, is to bring in daylight through the wall of the building. They have dark rooms far from the roof, and routing daylight-pipes through several floors of a high-rise building above is often cost prohibitive and impractical.

Also quite common is the need to bring sunlight underground and into basements, where offices and living spaces are created in bigger cities. Our F - Series Sun Tunnels provide an effective solution.

Real sunlight in rooms where it was previously impossible!

A Crystal Glass Light collector from Lightway® on the outer walls of the building sends sunlight through horizontal tubes into hallways or bathrooms or other apartment rooms, which previously were dark and without natural light. If you cannot install a sun tunnel on the roof, then Lightway® provides an option to locate it on the exterior wall of the building. This unique sun tunnel collects 3 times more light than a standard sun tunnel and easily transmits it over distances of up to 30 m!