

Ideas for Impromptu Elopements

IN A HURRY? Deploying soon? *Ultimate simplicity (i.e. NO FRILLS) \$300: Bring your valid Washington marriage license and paperwork and your two witnesses and meet me at my location to sign paperwork in Olympia. You will be married in minutes. Wear PPE and bring a black ink pen to sign. I'll prompt you to sign marriage paperwork, exchange I DO's, and then pronounce you married. VOILA. As short and sweet as it gets.*

SOME LOCATION SUGGESTIONS FOR SMALL, IMPROMPTU ELOPEMENTS. "Small" = 5 people: wedding couple, 2 witnesses, and officiant. Discovery Pass/entry fee or wedding permit may be required for some parks for bigger wedding parties. Confirm rules and hours of operation with your desired location.

\$350 – ELOPE IN LACEY/OLYMPIA/TUMWATER:

[Tolmie State Park](#) a 154-acre, marine day-use park with 1,800 feet of saltwater shoreline on Puget Sound.

[West Bay Park](#) 700 West Bay Drive NW, near downtown Olympia with beautiful views of marina and Olympics.

[West Bay Marina](#) 611 Columbia St NW, Olympia

[Boston Harbor Marina](#) 312 73rd Ave NE, Olympia

[Olympia Marina \(Fiddlehead Marina\)](#) 611 Columbia St NW, Olympia

[Swantown Marina](#) 1022 Marine Drive NE, Olympia

[Priest Point Park](#) 2600 East Bay Drive NE, Olympia

[Capital Lake Park](#) 5th Ave SW &, Water St SW, Olympia.

[Tivoli Fountain](#) on the Washington State Capitol Campus: 103 Capitol Way S, Olympia

LOCAL \$350 = within a 30-minute drive from my home, 6333 75th Ave NE, Olympia, WA to your ceremony location in Lacey, Olympia, or Tumwater.

\$400 – ELOPE AT THE BEACH IN OCEAN SHORES

[Chance A La Mer beach access](#) nearest to town in Ocean Shores, WA; you can drive directly down onto the beach near the Shilo Inn. Stay on the beach road and avoid driving on the soft sand. Bathrooms? Yes. Has established/plumbed public bathrooms and kept relatively clean.

[Damon Point](#) in Ocean Shores. Park your car then walk down to the cove. Bathrooms? Kind of. Portapotty. Cleanliness is hit and mostly miss.

[North Jetty](#) in Ocean Shores. Park your car and walk down to the rock jetty. A wet & wild location during storms! Bathrooms? Kind of. Seasonal portapotty.

[Damon Road beach](#) access off of SR 115, near Best Western Lighthouse Inn in Ocean Shores. You can drive directly down onto the beach. Stay on the beach road and avoid driving on the soft sand or you will get stuck. Bathrooms? Nearby at Oyhut State Park just up the road.

[Roosevelt Beach access](#) north of Ocean Shores. You can drive directly down onto the beach. Stay on the beach road. Yes, still be careful about driving in soft sand. But I drive on this beach in my little car with far less worry of getting stuck. I have seen full size RVs driving on the beach here during clam digging season. Bathrooms? Meh... Kind of. The Roosevelt approach has a vaulted toilet I recommend for emergencies only.

Other example officiant rates/locations...

\$450 – elope at your location at SEABROOK, PACIFIC BEACH, MOCLIPS, TAHOLAH, WESTPORT, GRAYLAND, TOKELAND

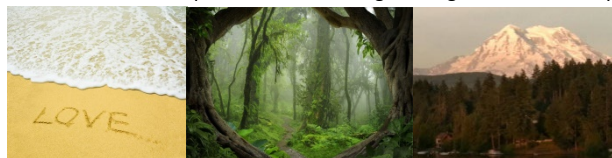
\$500 – elope at your location at HOOD CANAL, [Mt Rose Trailhead - Lake Cushman](#), [Lake Quinault Lodge](#)

\$550 – elope at your location at FORKS, KALALOCH, SOL DUC HOT SPRINGS, SNOQUALMIE FALLS

\$600 – elope at your location at LONG BEACH, OCEAN PARK, OYSTERVILLE

\$650+ – elope at your location at MT RAINIER NP, MT ST HELENS, LAKE OZETTE, CRESCENT LAKE, SAN JUAN ISLANDS

Remote locations are ideal for spring & summer ceremonies. Not recommended for winter or in adverse weather conditions. Rates listed here are examples and your individual quote may be higher depending if any amount of hiking or off road driving is involved to reach the ceremony location or if a ferry or hotel is required. Please discuss ceremony location with officiant when you call for quote. All rates are subject to change without notice. PPE and social distancing encouraged. Sign your marriage paperwork in black ink. You are responsible for obtaining marriage licenses and any necessary permits.



DID YOU KNOW? Your Washington marriage license is valid ANYWHERE in Washington State!

There is a 3-day waiting period, but then it is valid for 60 days from date of issue.

Check with your local county auditor for more info.