



AMPS Atlanta 2018 Club Project

M2/M3 Halftrack Family Part 11 – Continuing on the M2A1

M2A1 – Catching Up

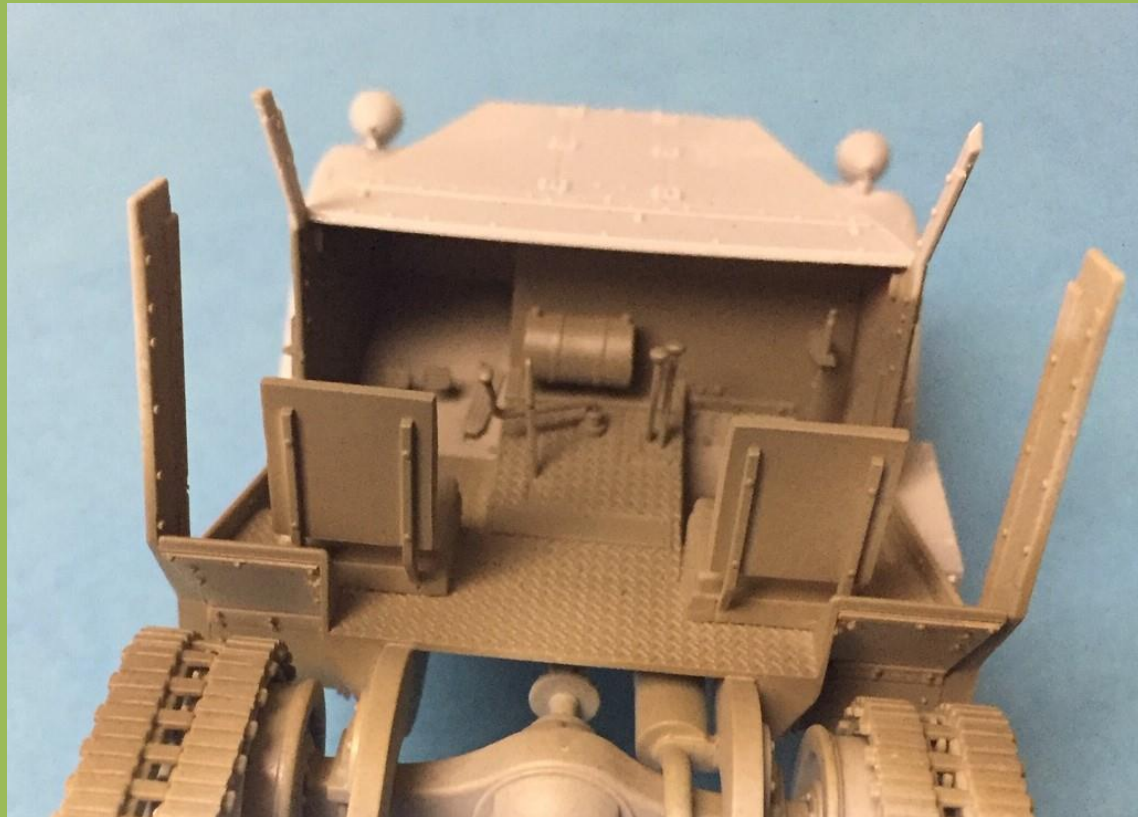
Note that common details between the M2A1 and those already covered in building the M3A1 will not be repeated here.

Closing in on assembly completion, with front and rear compartments attached to the frame.

M2A1

Prepainting the Front Compartment interior.

Some of the front and lower sections of the driver's compartment are difficult to access once everything is assembled, so I masked and sprayed the area prior to attaching the rear compartment.



M2A1

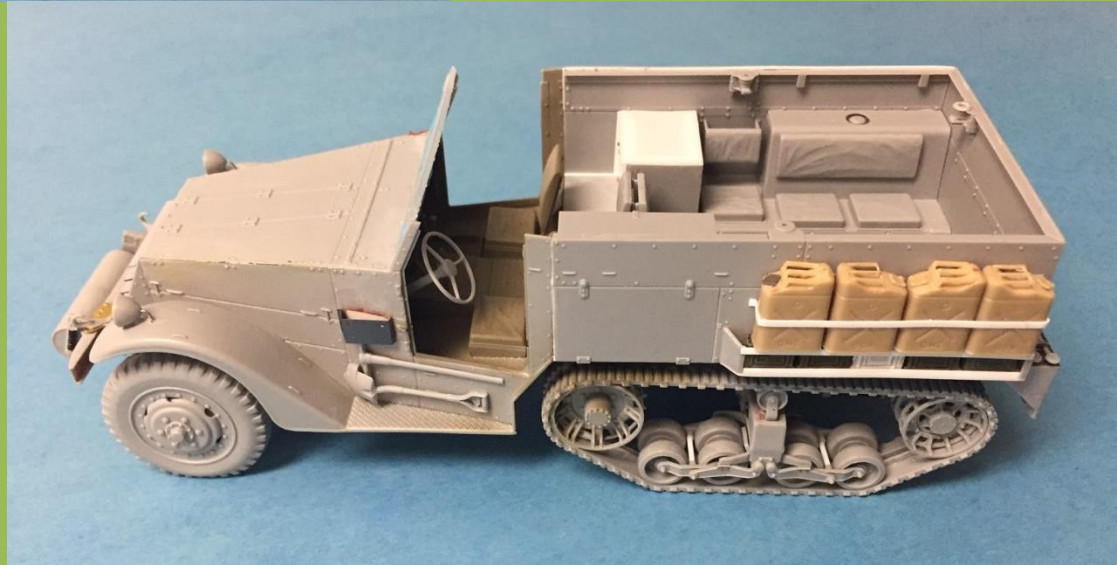
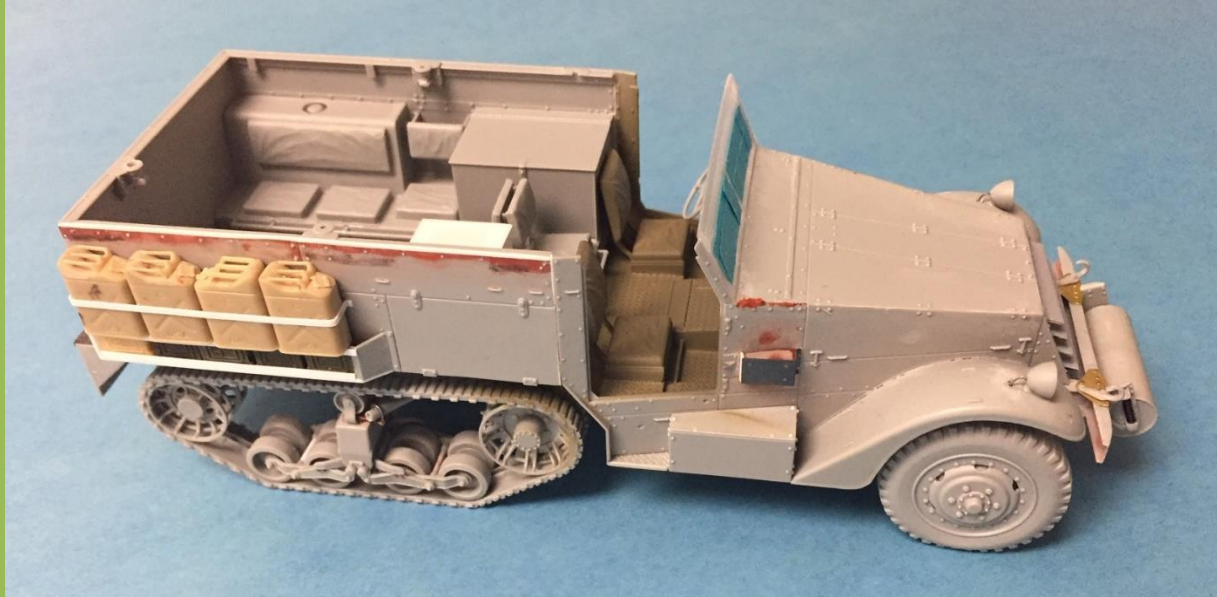
Fixing the Rear Compartment to the Frame

The fit between the front and rear compartment was a challenge on this track.

Had to contend with lateral fit issue and a slight gap on both sides. Eventually wrangled the rear compartment into place, with the help of very thin shims.

M2A1

Photos of Assembled Rear Compartment



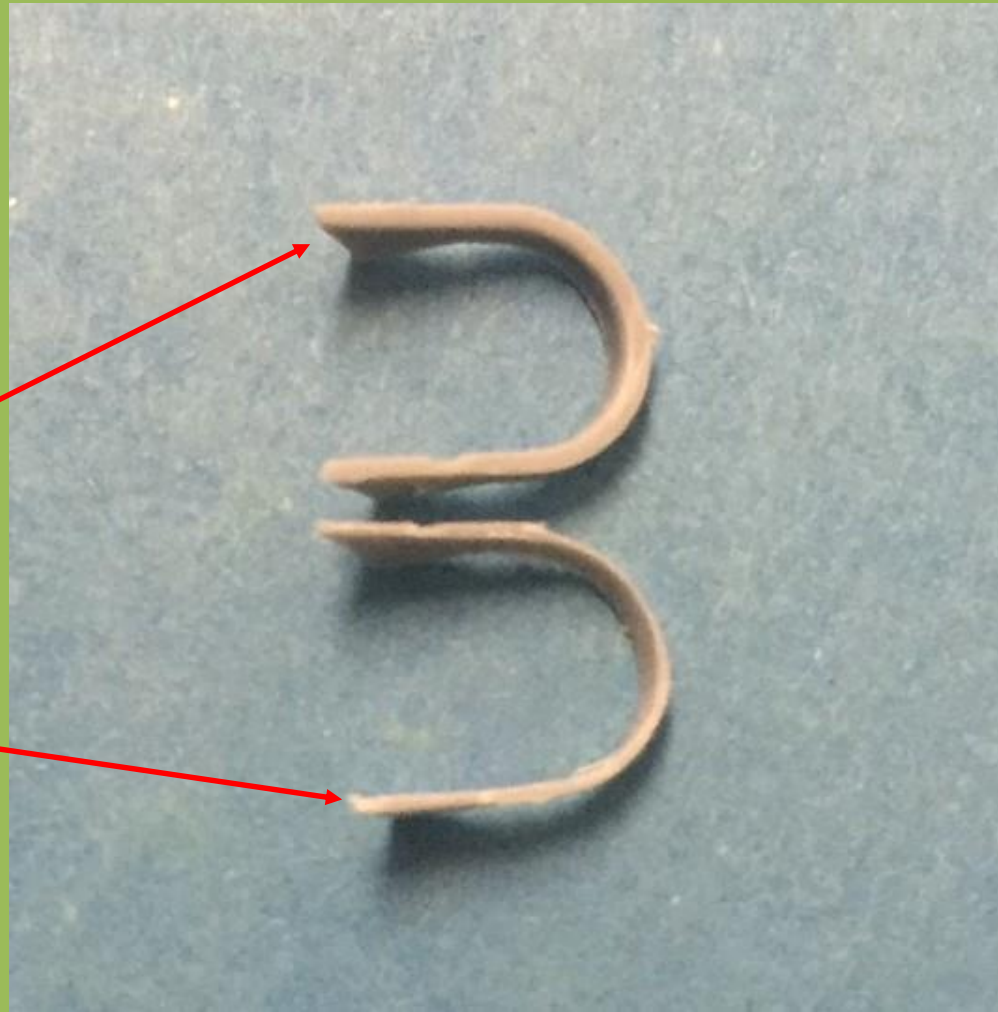
M2A1

Headlight Guards

The early type headlight guards in the kit are overly thick and out of scale. They need to be thinned for a better scale appearance.

Original kit part

Part after thinning

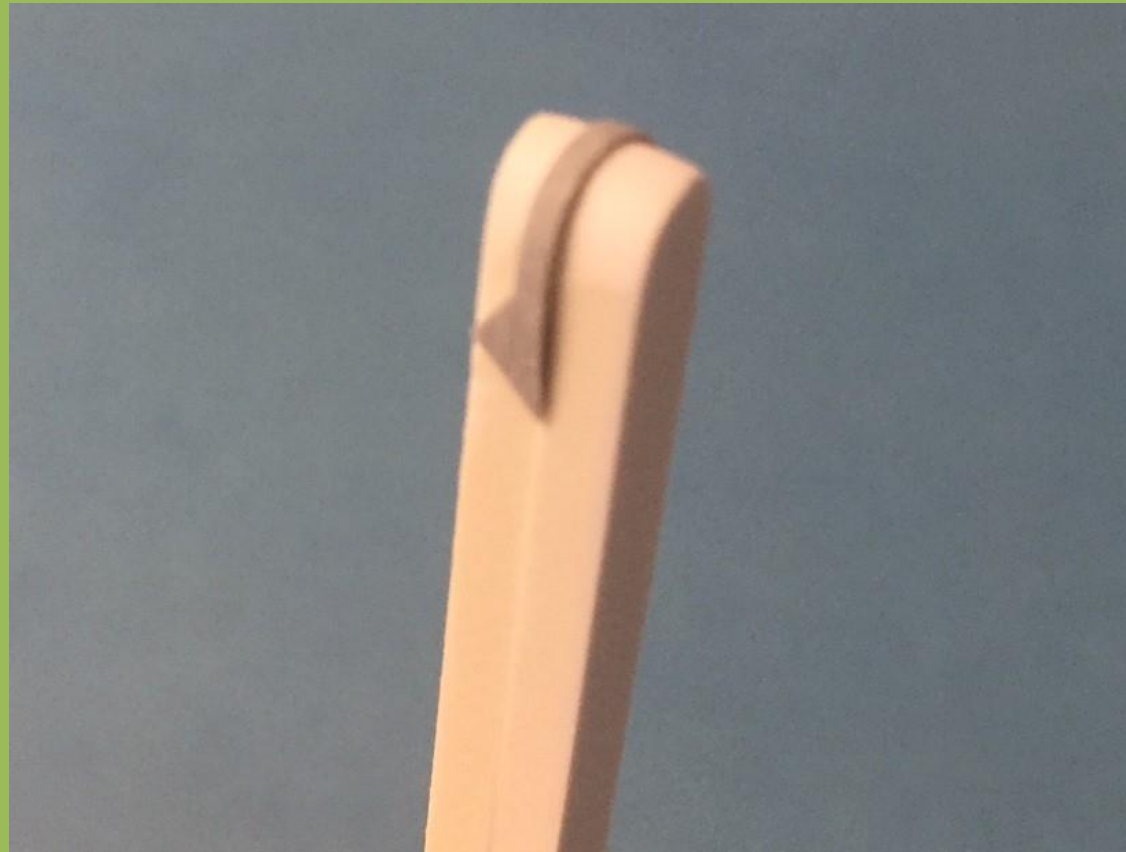


M2A1

Because the photoetch part has to fit on the inside of the plastic headlight guard, I thinned it from the outside.

I shaped a mandrel from plastic stock to support the part while thinning it (it becomes fragile as it is thinned).

I thinned the straight sections first and then the top curved section to avoid deforming or breaking the part.



M2A1

The completed Headlight Guards ready for mounting.

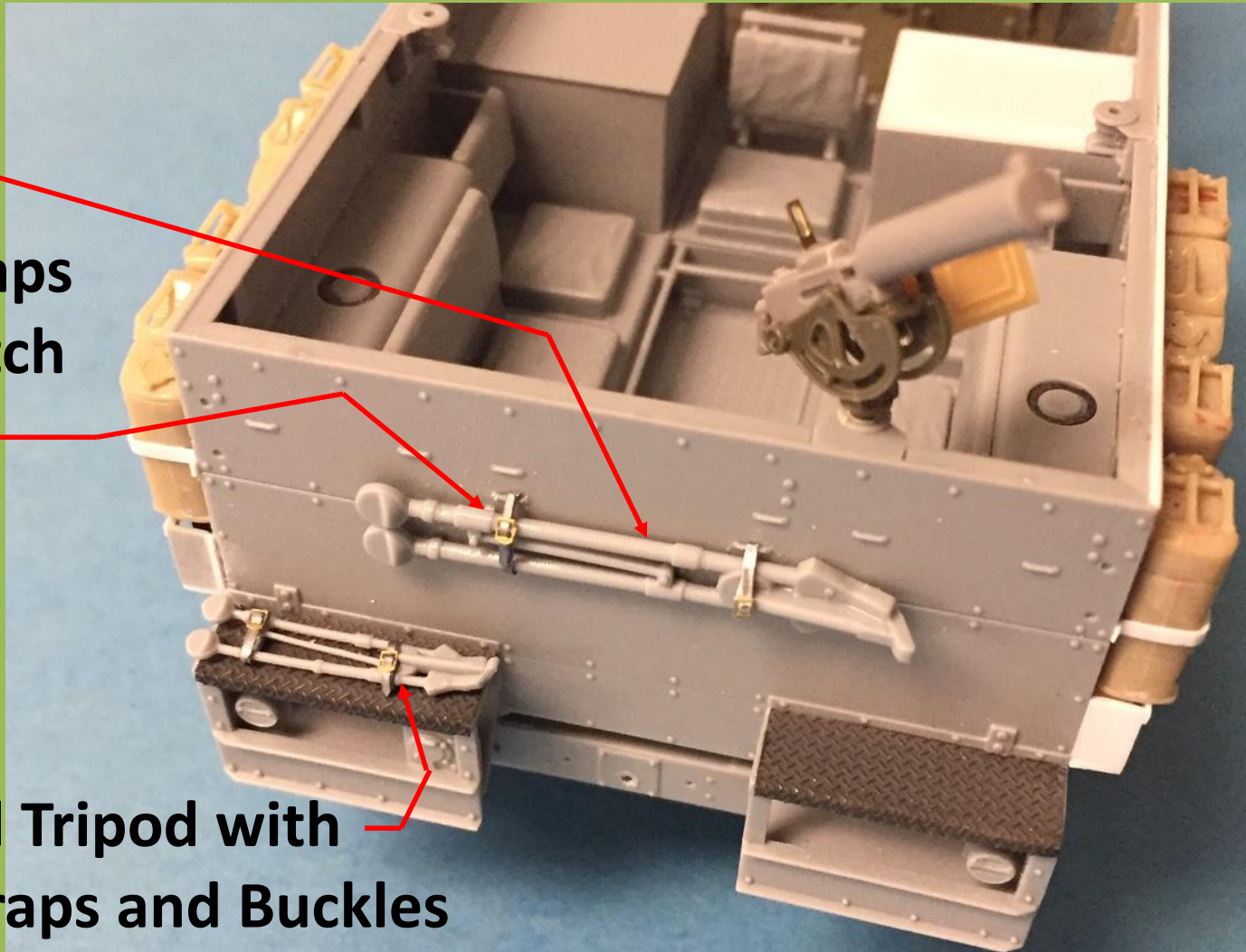


M2A1

Adding M.G. Tripods at the rear

50 Cal MG
Tripod

Lead Foil Straps
with Photoetch
Bras Buckles



M1919 30 Cal Tripod with
Photoetch Straps and Buckles

M2A1

M1917A1 30 Cal M.G. I used the ground mounted m.g. from MB Kit U.S. Machine Gunners, Europe, 1944 and the cradle from Asuka 30 caliber M.G. kit.

Rear sight is a left over photoetch part from On The Mark

