

CRYE-LEIKE,
REALTORS®
(479) 876-6800

2022 COMMUNITY GUIDE
BENTON
COUNTY

Image Via Pixabay By scholty1970



479-259-5329



Wells Asphalt Paving in Rogers, AR is a full-service company that offers high-quality residential and commercial asphalt paving solutions at locally competitive rates. We are skilled in undertaking various projects – from a parking lot and driveway installation to asphalt resurfacing and maintenance. We use the best products and materials available in the industry and guarantee services and results that will surpass your expectations.



Our priority is to quickly and safely complete your project. To this end, we will take the time to understand your ideas and expectations. Then we will come up with a detailed plan of action and offer asphalt paving solutions that will meet your budget constraints.



WORKING HOURS

Monday	8:00am to 5:00pm
Tuesday	8:00am to 5:00pm
Wednesday	8:00am to 5:00pm
Thursday	8:00am to 5:00pm
Friday	8:00am to 5:00pm
Saturday	8:00am to 5:00pm
Sunday	Closed

Call the office for any questions you may have!

479-621-8261



WELCOME TO
BENTON COUNTY
A R K A N S A S

CONTENTS

4 **Benton County At A Glance**

A Closer Look:

5 **Rogers**

6-7 **Bentonville**

22-23 **Places To Visit/Things To Do**

28-29 **County Map**

31 **Directory**



Ad Designer - Kylie Cutting
Book Designer - Teri Burkitt
Art Director - Kara Cutting | Published by HMI
All rights reserved (c) 2022 Heartland Marketing Inc.
1310 El Camino Drive | Pekin, IL 61554
Phone: 309.349.3282 | Fax: 309.349.3484
www.heartlandmarketinginc.com



The background of the page is a photograph of the Benton County Courthouse in Arkansas. The building is a two-story structure with a classical architectural style, featuring a series of arched windows on the ground floor. Above the windows, the words "BENTON COUNTY ARKANSAS" and "COURT HOUSE" are visible in stone or concrete. A large American flag flies on a tall pole in front of the building. The sky is clear and blue. The title "At a glance BENTON County ARKANSAS" is overlaid on the top half of the image. "At a glance" is in a white, cursive font. "BENTON" is in large, bold, block letters with a color gradient from green to orange. "County ARKANSAS" is in a white, cursive font below "BENTON".

At a glance BENTON County ARKANSAS

BENTON COUNTY **279,141**

Rogers	67,600
Bentonville	51,111
Bella Vista	28,661
Siloam Springs	16,991
Centerton	15,570
Lowell	9,422

BENTON COUNTY AR, Benton County, is a county located in the U.S. state of Arkansas. The county seat is Bentonville. The county was formed on September 30, 1836 and was named after Thomas Hart Benton, a U.S. Senator from Missouri. In 2012, Benton County voters elected to make the county wet, or a non-alcohol prohibition location.

Benton County is part of the Northwest Arkansas region. According to the U.S. Census Bureau, the county has a total area of 884 square miles of which 847 square miles is land and 37 square miles (4.1%) is water. Most of the water is in Beaver Lake.

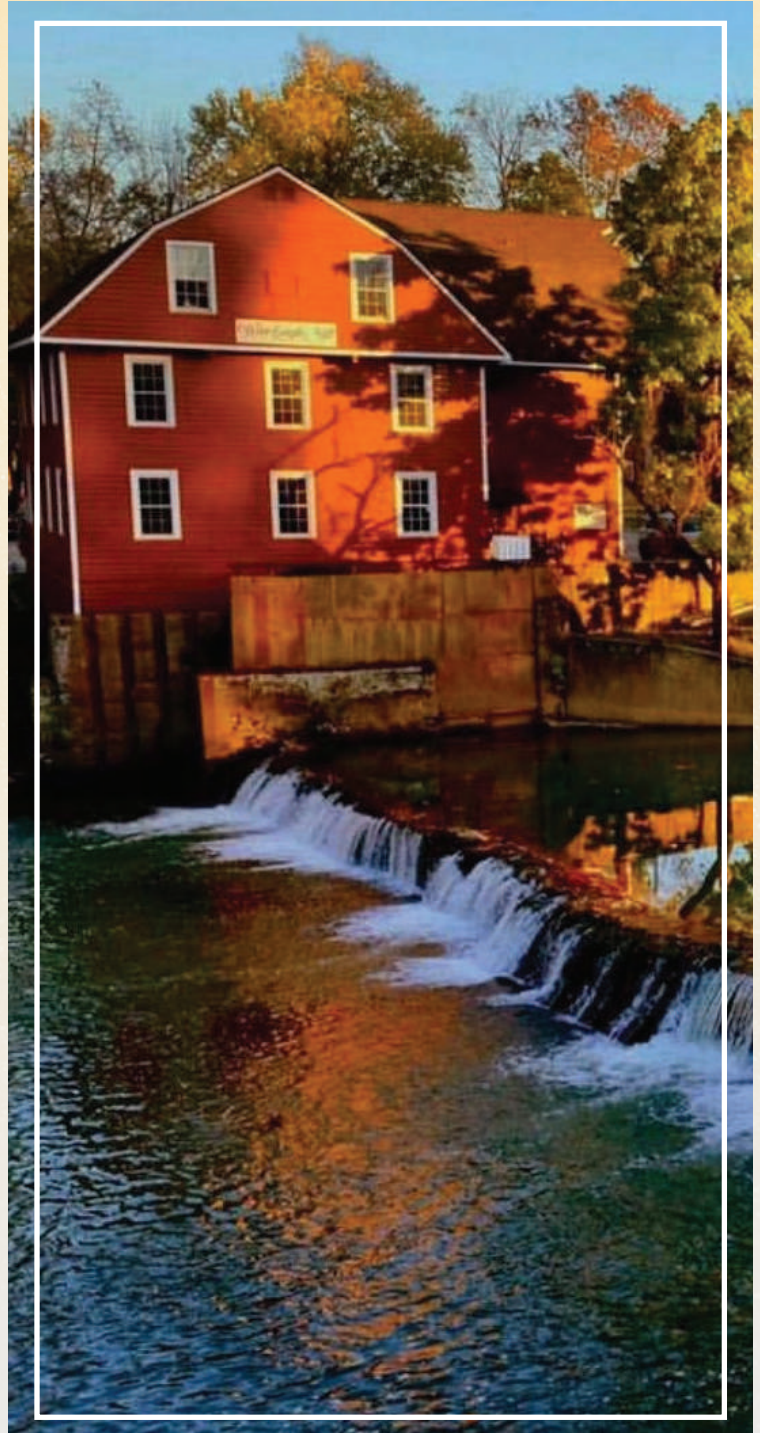
ROGERS

Benton County

ROGERS is a city in Benton County, Arkansas. Located in the Ozarks, it is part of the Northwest Arkansas Metropolitan Area, one of the fastest growing metro areas in the country. Rogers was the location of the first Walmart store, whose corporate headquarters is located in neighboring Bentonville. Daisy Outdoor Products, known for its air rifles, has both its headquarters and its Airgun Museum in Rogers.

As of the 2010 census, the city had a population of 55,964. In 2019 the estimated population was 67,600, making it the sixth-most populous city in the state. The Fayetteville-Springdale-Rogers Metropolitan Area, more commonly known as Northwest Arkansas, is ranked 109th in terms of population in the United States, with 465,776 inhabitants as of the 2010 U.S. Census. The city has a total area of 33.6 square miles (87 km²), of which 33.5 square miles (87 km²) is land and 0.1 square miles (0.26 km²) (0.15%) is water.

Rogers was named after Captain Charles Warrington Rogers, who was vice-president and general manager of the St. Louis and San Francisco Railway, also known as the Frisco. The town was established in 1881, the year the Frisco line arrived; it was at this time the area residents honored Captain Rogers by naming it for him. The community was incorporated on June 6, 1881.



BENTONVILLE



BENTONVILLE is the ninth-largest city in Arkansas, United States and the county seat of Benton County. The city is centrally located in the county with Rogers adjacent to the east. The city is home to the world headquarters of Walmart, the world's largest retailer. It is one of the four main cities in the four-county Northwest Arkansas Metropolitan Statistical Area, which is ranked 109th in terms of population in the United States with 463,204 residents in 2010, according to the United States Census Bureau. The city itself had a population of 35,301 at the 2010 Census, with an estimated population of 51,111 in 2019. Bentonville has a total area of 31.5 square miles (81.6 km²), of which 31.3 square miles (81.0 km²) is land and 0.19 square miles (0.5 km²), or 0.67%, is water.

The area now known as Bentonville's first known use by humans was as hunting grounds by the Osage Nation

who lived in Missouri. The Osage would leave their settlements to hunt in present-day Benton County for months at a time before returning to their families. White settlers first inhabited the area around 1837 and named their settlement "Osage". By this time, the Osage had ceased using the area for hunting, and the white settlers began to establish farms. Upon establishment of Benton County on September 30, 1836, Osage was deemed a suitable site for the county seat, and the town square was established as the home of county government the following year. Osage was renamed Bentonville in honor of Thomas Hart Benton, a senator from Missouri who strongly supported Arkansas statehood.

Two years after Arkansas received statehood in 1836, thousands of Cherokee people from Georgia passed through Benton County as part of the Trail of Tears

ARKANSAS

Benton County



route to the Indian Territory in what is now Oklahoma. Although no Civil War battles were fought inside Bentonville, the city was occupied by both armies and saw almost all of its buildings burned, either by opposing armies or guerrilla outlaws. Bentonville was a staging point for the Confederate army prior to the Battle of Pea Ridge, fought about 12 miles (19 km) northeast of town, and the town saw a brief skirmish just prior to the battle. The city began to rebuild about a decade after incorporation on April 3, 1873, with many of these Reconstruction Era buildings today serving as the oldest structures in Bentonville.

In the 1920s and 1930s the county developed a reputation as a leader in poultry production that continued into the World War II years, and which the area still maintains today. The post war economy helped Bentonville grow, with many new businesses starting.

Sam Walton bought the Harrison Variety Store on the Bentonville town square. He fully remodeled the building and opened “Walton’s 5 and 10 Variety Store” on March 18, 1951. This single store eventually led to the creation of Walmart, the world’s largest retailer, which still strongly influences the community today.

The late twentieth and early twenty-first century has seen a dramatic reduction in the manufacturing sector in Bentonville, corresponding with an increase in tourism and entertainment focused on the natural setting and outdoor opportunities of the area as well as the Crystal Bridges Museum of American Art, which opened in 2011. This has resulted in Bentonville being the fastest growing city in Arkansas, and the larger Northwest Arkansas area one of the fastest growing in the United States.

For outstanding HVAC services, Benton County Heating and Cooling, Inc. in Bentonville, AR is the contractor you can count on!

BENTON COUNTY HEATING & COOLING, INC.

OUTSTANDING HEATING AND COOLING SOLUTIONS

SAME LOCATION SINCE 1973
RESIDENTIAL AND LIGHT COMMERCIAL



1111 W Central
Bentonville, AR 72712



Phone: 479-273-7170
Fax: 479-273-2004



www.bentoncountyheatingandcooling.com



WHBCHC1973@Gmail.com





- Gutter & Downspout Repair
- Gutter Cover Installation
- Gutter and Downspout Installation
- Gutters and Downspouts
- Rain Barrel Installation

Rogers, AR - 479.531.8062 | 479.721.7926



A - Best Guttering

Get a Free Estimate

GONZALEZ TREE SERVICE (479) 670-1836

Bentonville, Arkansas 72712 www.gonzaleztreeservicear.com

For the professional tree care service you need, turn to our company for assistance. We proudly serve the residents of Bentonville, AR with high standards and safety measures in our practice and we are more than ready to provide your trees with the care they need. We invite you to browse our website to find out more about Gonzalez Tree Service.



- Tree Planting
- Tree Pruning
- Tree Trimming
- Tree Cutting
- Tree Removal
- Bush Trimming
- Stone Removal
- Commercial Only



GLASS INSTALLATION, TINTING & REPAIR

(479) 273-5545 • www.bentonvilleglass.com

Why choose Bentonville Glass Inc.?

When it comes to all kinds of glass construction services, we offer the most **competitive rates** in Bentonville. We also have decades of **experience** in the business and the stunning **quality** of our work is a testament to our commitment to always give the customer our best effort. Our **customer service** is unparalleled, as is proven by our ever-growing list of satisfied customers.



High-quality glass at affordable prices!

Good quality glass protects, preserves and promotes a home, business or car. BGI offers installation, repair or replacement of **residential, commercial, and automobile windows**. We also offer shower glass repair and window tinting services. We have experts who can handle everything from residential windows and shower doors to high-tech commercial glass needs. We have an impressive inventory of products and are ready to deal with any glass installation or repair needs you may have.



507 S Main St • Bentonville, Arkansas • (479) 273-5545 • www.bentonvilleglass.com

Nelson HARDWARE & SUPPLIES



Find us on
Facebook

We Carry:
Bog Boots
Melissa & Doug Toys
Case Knives
Livestock Feed
Total Equjne Feed
New & Used Tires

(479) 248-7211

(479) 248-1364 (tire shop)

Come see our "Old Fashioned Hardware Store"!

115 S Main St Cave Springs, Arkansas



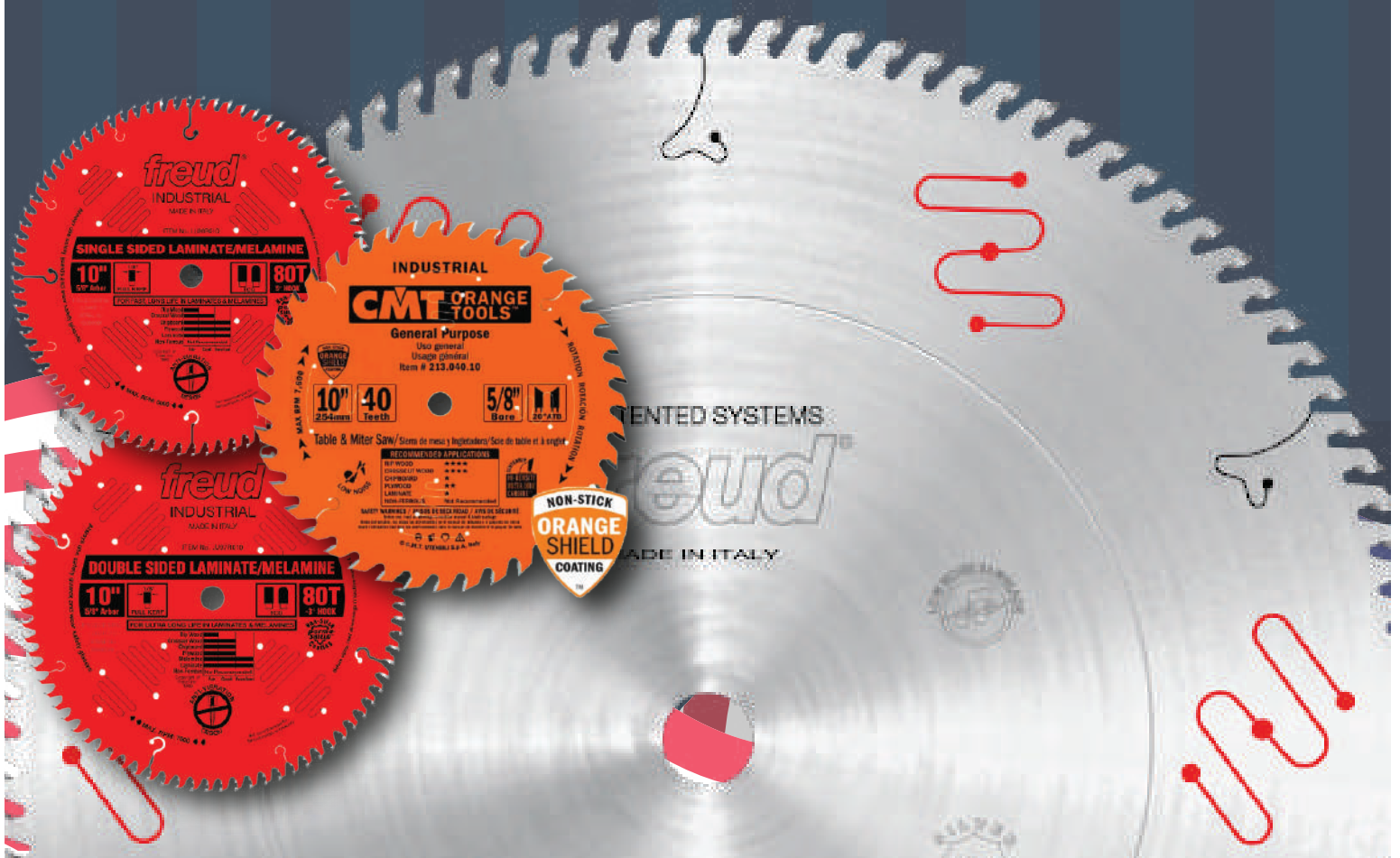
American Sharpening & Supply

Sharpening Service in Rogers

300 W Beacon Industrial Park Road Rogers, AR 72758

(479) 631-6871

"Very good place to get anything sharpened friendly and good work"





39 Evanton Dr, Bella Vista, AR 72715

(918) 352-8800
theseedguy.net



We offer top quality, reasonably priced, Non-GMO Heirloom seeds – which provides our customers the ability to grow amazing gardens that will feed their families healthy food!!



Everything Starts As A Seed

"Our Family Caring For Your Family With Honor, Dignity and Respect"



Independent & Assisted Living Community in Bentonville, AR
State Licensed Level 2 Assisted Living



The Meadows believes in exceptional care standards

- 24/7 Nurse on duty
- Certified Nursing Assistants
- Personal Care Assistants
- Life Enrichment Coordinator
- Private Dining Room Onsite Chapel, Theater & Beauty Salon
- Scheduled Transportation
- Weekly housekeeping and linen service
- Daily activities
- Free Wi-Fi
- Emergency Call Service
- Video Camera Secured Entrances

We understand that individual needs vary, and that's why we offer you the option of choosing a plan that is right for you.



2300 SE 28th St, Bentonville, AR 72712
(479) 273-9969



***FIND
HOMES***



EQUAL HOUSING
OPPORTUNITY



MULTIPLE LISTING SERVICE

MLS

ANYTIME

callpam.net

Pam Berry REALTOR®

Cell: (479) 282-6400

Office: (479) 876-6800

pam.berry@crye-leike.com

Buying? Selling? Relocation?

You Have Questions... CALL

CRYE-LEIKE®

REAL ESTATE SERVICES

www.crye-leike.com



LL PAM

BEAVER LAKE HIDEAWAY

www.beaverlakehideaway.com

26 acres of natural scenic beauty on Beaver Lake with full hookup RV sites (90-ft. length limit), rustic tent sites, sleeping cottages, full service rooms and cabins, swimming pool, boat dock, laundry, hot showers and restrooms, covered pavilion, playground, fishing guide service and general store.

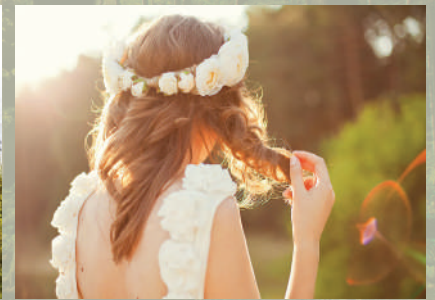
***We have added a new cabin! It is a tiny home and glamping tents are going to be up soon.
We also will be adding yurts next year.***



*Explore 25 Acres of
Natural Scenic Beauty*



*Kayaking, Fishing, Swimming,
Sailing, Paddle Boards & More*



*Lakeview WEDDINGS
A Truly Unique Celebration*



8369 Campground Cir, Rogers, AR 72756

(479) 925-1333



BLUFF DWELLERS



CAVE

Hidden Gem of the Four States



417-475-3666

163 Cave Rd Noel, MO.

www.bluffdwellerscave.com



Cut Above Grooming Salon LLC

www.cutabovegroomingsalon.us

**Our Certified Professional
Pet Stylists Offer Customized
Care for a Pets Specific Needs.**



3404 Bella Vista Way,
Bella Vista, AR 72714

Mon Closed
Tue-Fri: 09:00 AM-05:00 PM
Sat-Sun: Closed

(479) 855-3646

Call For Your Appointment Today!

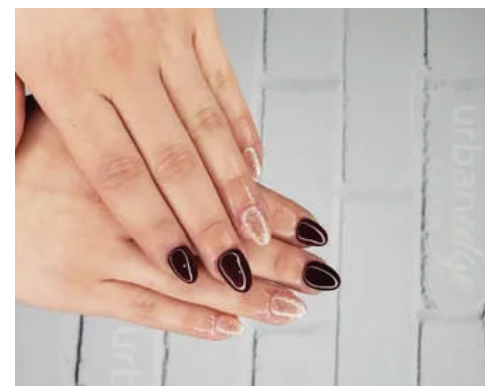
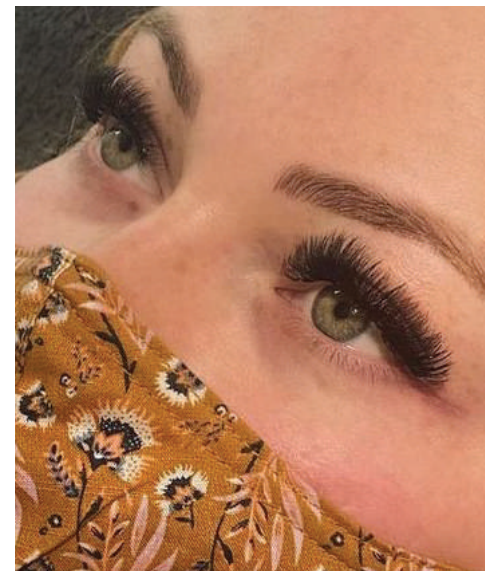
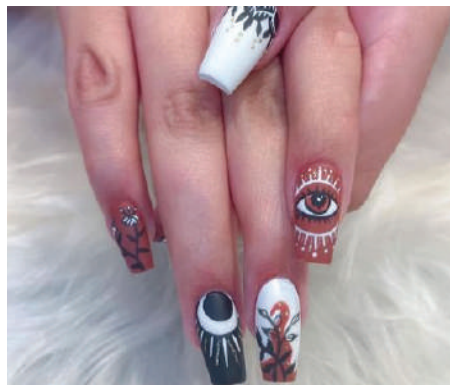




1500 Southpointe, Siloam Springs, AR 72761

urbanedge SALON

Hair / Manicures / Pedicures / Lashes / Facials / Skin Treatments



479.524.6424

urbanedgesiloam.com

Places to visit

and things to do

Bluff Dwellers Cave
4 State Area
Noel, MO

War Eagle Cavern on Beaver Lake
21494 Cavern Drive
Rogers, AR 72756-7493

War Eagle Mill
11045 War Eagle Rd
Rogers, AR 72756-7544

Daisy Airgun Museum
202 W Walnut St
Rogers, AR 72756-6665

Hobbs State Park
Conservation Area
20201 E Highway 12
Rogers, AR 72756-7530

Lake Atalanta Park
500 E Walnut St
Rogers, AR 72758

Rogers Aquatics Center
1707 S 26th St
Rogers, AR 72758-1317

Pinnacle Hills Promenade
2203 S Promenade Blvd, Suite 3200
Rogers, AR 72758-8888

New Province Brewing Company
1310 W Hudson Rd
Rogers, AR 72756-2311

Bentonville Brewing Company
1700 S 1st St
Rogers, AR 72756-5923

Rogers Little Theater
116 S 2nd St
Rogers, AR 72756-4526

Somewhere in Time Antique Mall
719 W Walnut St
Rogers, AR 72756-3759

Rogers Historical Museum
313 S 2nd St
Rogers, AR 72756-4545

Ed Cooley Gallery
115 S 2nd St
Rogers, AR 72756-4525

Key Wing Rogers Historical Museum
322 S 2nd St,
Rogers, AR 72756

Crystal Bridges Museum of American
Art - 600 Museum Way
Bentonville, AR 72712-4947

ARKANSAS

Benton County

The Walmart Museum
105 N Main St
Bentonville, AR 72712-5341

Museum of Native American History
202 SW O St
Bentonville, AR 72712-3641

Bentonville Town Square
100 N Main St # 198
Bentonville, AR 72712

Scott Family Amazeum
1009 Museum Way
Bentonville, AR 72712-5176

Slaughter Pen Hollow
203 NE 3rd St
Bentonville, AR 72712

21c Museum
200 NE a St
Bentonville, AR 72712-5360

The Peel Mansion Museum
& Heritage Gardens
400 S Walton Blvd
Bentonville, AR 72712-5705

The Peel Mansion Museum
& Heritage Gardens
400 S Walton Blvd,
Bentonville, AR 72712

Phillips Park
3108 SE J St,
Bentonville, AR 72712

Mildred B. Cooper Memorial Chapel
2504 Memorial Dr
Bella Vista, AR 72714-1842

Tanyard Creek Nature Trail
Lancashire Blvd to Nature Trail Ln
Bella Vista, AR 72715

Veterans Wall of Honor
103 Veterans Way
Bella Vista, AR 72714-9603

Back 40
101 Town Ctr NE, Ozark Mountains
Bella Vista, AR 72714-2403

Blowing Springs Park
948 Blowing Spring Rd,
Bella Vista, AR 72714



THANK YOU FOR VOTING US BEST SIGN SHOP!

Signs, Wraps, Banners, Channel Letters, Retail Displays, Digital Boards/Menus, Screen Print, Embroidery, & More!

479.250.4844

Visit us at one of our four locations!

204 Jane Place
Lowell, AR 72745

508 SW 14th St
Bentonville, AR 72712

1200 N 6th St
Rogers, AR 72756

1861 N Main St
Cave Springs, AR 72718



www.yoursignstudio.com





TRIPLE MUSTARD BACON CHEESEBURGER

(BPT) - You can smell it in the air: BBQ season is in full swing. To impress your friends and family, you're going to need to offer up some serious eats because, let's face it, the food is the true star of any BBQ. But, this summer, don't overlook one of the key elements to really enjoying the full grilling experience - music.

McCormick asked Pitmaster Myron Mixon and the legendary DJ Jazzy Jeff to bring the two together. They remixed an old-school favorite, the classic cheeseburger, and layered it with lots of flavor. Try this Triple Mustard Bacon Cheeseburger, which calls for mustard in the ground beef to add tang, brushed on as a grilling glaze to keep them moist, and spread on the rolls as the perfect topping.

Below are a few helpful tips from Myron and Jazzy Jeff for making your BBQ sing this summer. Visit FindYourSummerHit.com - this season's go-to grilling resource for seasonings, sauces, grilling essential sets, guides,

tips, and of course - more recipes!

* Be patient - Myron points out that flipping meat too early is one of the most common grilling mistakes. The key to the perfect burger is waiting until it's cooked on one side before turning. The flip should only happen once.

* Give your burger a little poke - Try not to press your patties with the spatula. That sizzle is the sound of all your flavorful juices hitting the grill and drying out. Instead, Myron recommends pressing your thumb into the patties to create a dimple, before throwing them on the grill, for more even cooking.

* Set the mood - Nothing says backyard BBQ like turning up the ultimate playlist. Jeff suggests choosing songs that are nostalgic and make you think about the great summers of the past.

Triple Mustard Bacon Cheeseburger (Serves 4)

- **Ingredients:**
- 1 pound ground beef
- 4 slices cheddar cheese
- 4 slices bacon, crisply cooked
- 6 tablespoons French's Classic Yellow Mustard, divided
- 1 teaspoon McCormick Garlic Powder
- 1/4 teaspoon McCormick Black Pepper, ground
- 1/4 teaspoon salt
- 4 hamburger rolls
- **Directions:**
- 1. Mix 2 tablespoons of the mustard, garlic powder, pepper and salt in medium bowl. Add ground beef and mix gently until well blended. Shape into 4 patties.
- 2. Grill over medium heat 4 to 6 minutes. Brush tops with 1 tablespoon of the mustard. Flip burgers and brush with an additional 1 tablespoon of the mustard. Grill 4 to 6 minutes longer or until desired doneness. Add cheese slices to burgers 1 minute before cooking is completed.
- 3. Spread remaining 2 tablespoons of the mustard on rolls. Serve burgers on rolls. Top with bacon and desired condiments and toppings.



The **FUTURE** of Commercial Trucking: Your favorite goods now delivered using alternative fuel

(BPT) - Think about it: The food you purchased at the grocery store and cook for dinner tonight might have come from other locations around the world. Your clothes bought online might come from a manufacturing plant across the country. That package sitting outside in your entryway when you get home from work could have traveled coast-to-coast before arriving at your door.

Thanks to the trucking industry, you are able to purchase and use the things you want and need. In fact, the trucking industry is the lifeblood of the U.S. economy, with about 71 percent of all the freight tonnage moved in the U.S. being done so on trucks, according to the American Trucking Associations. As the industry saying goes: If you bought it - a truck probably brought it.

To move 10.5 billion tons of freight annually requires over 3.6 million heavy-duty Class 8 trucks and over 3.5 million truck drivers. It also takes almost 39 billion gallons of diesel fuel to move all of that freight, according to the association.

However, the trucking industry is changing with the times. With a forward-thinking mindset, transportation leaders and proactive companies are embracing the trend of using alternative-fuel vehicles such as electric vehicles in commercial transportation.

You probably have heard of electric cars for personal use, and maybe you even own one yourself. These types of vehicles are designed to use a battery instead of traditional fuels, which helps eliminate tailpipe emissions.

Larger commercial vehicles like trucks and buses may also benefit from this electric technology. The switch to electricity is slowly changing commercial transportation. In the future, you might receive your food, goods and packages - either directly or indirectly - by a commercial electric truck or van rather than diesel-powered or gasoline-fueled vehicles. While currently in limited availability, electric trucks are starting to take root in some of the larger trucking fleets.

Consider Penske Truck Leasing for example, which operates and maintains a truck fleet of more than 311,000 vehicles in North America. The company recently announced it was adding small, medium and large electric trucks to its overall fleet mix. And, it is also building out commercial electric vehicle charging stations at select California locations as a start.

Penske is an industry leader in transportation and in the areas of operating and maintaining fleets of traditionally fueled vehicles as well as alternative-fueled vehicles, which includes natural gas, propane, electric and diesel-electric hybrids.

Early introductions from truck manufacturers and large fleets like Penske are helping to re-shape the future of mobility in commercial transportation. The goods you use today that are shipped via traditional diesel trucks may one day be shipped using alternative fuels such as electricity.



Genesis Gymnastics Academy

Our mission at Genesis Gymnastics Academy is to provide a safe and loving environment for your gymnast/ tumbler to reach their full potential. We believe that you can work hard and still have fun reaching for your dreams. We strive to teach teamwork and team encouragement even in our recreational levels. Physical activity helps children to develop in body, mind, and spirit. Teamwork helps to build friendships.

We offer activities like Parents Night Out, Birthday Parties, Recreational Meets, and Camp days during the summer.

(479) 273-3416

524 Tiger Boulevard, Bentonville, Arkansas 72712

www.genesisgymnasticsacademy.org



Pre-Team and Women's Competitive Team



Preschool Gymnastics



Adult Gymnastics & Tumbling



The Best of 2020 Bentonville Gymnastics Centers



Recreational Gymnastics Boys & Girls



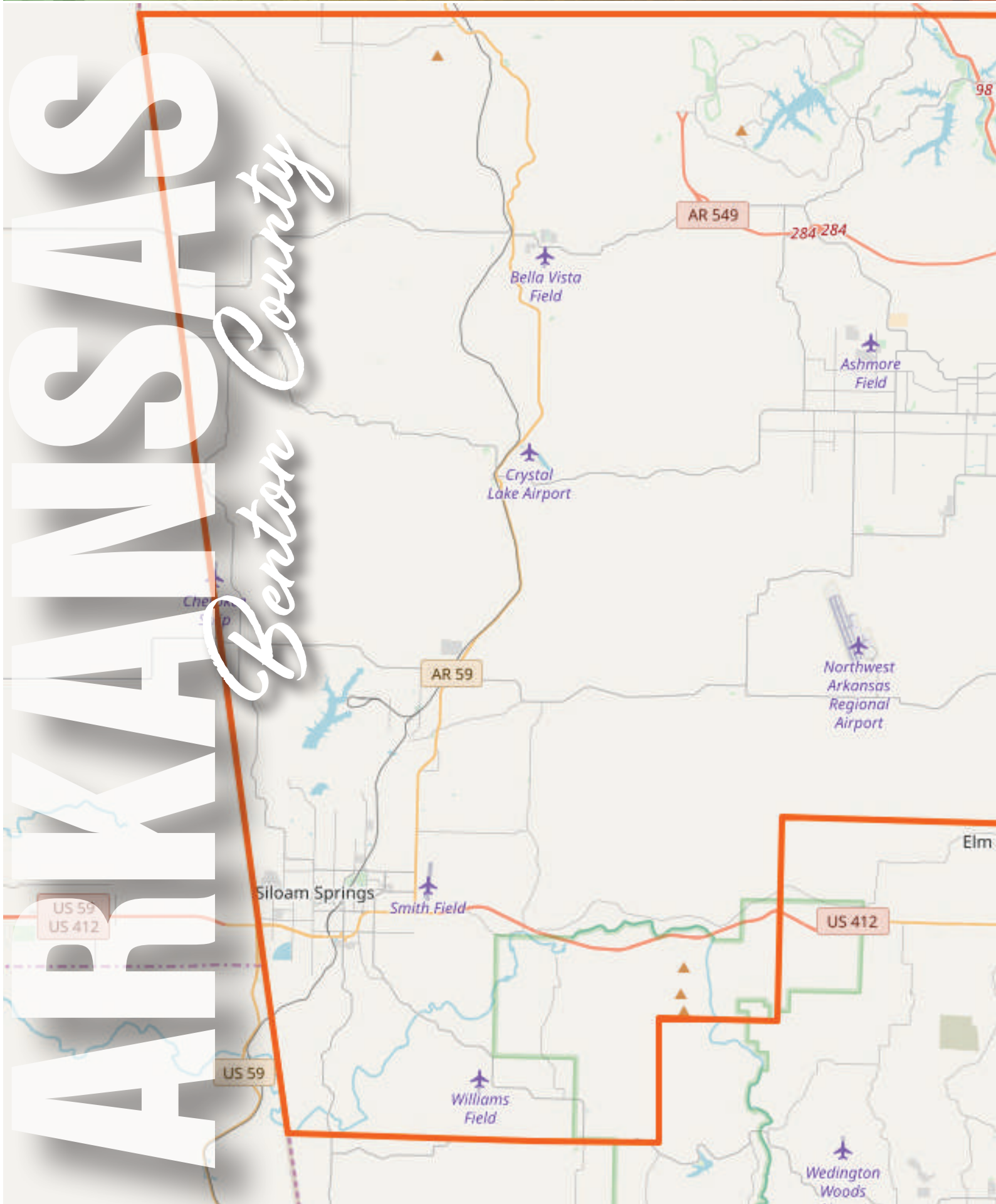
Tumbling

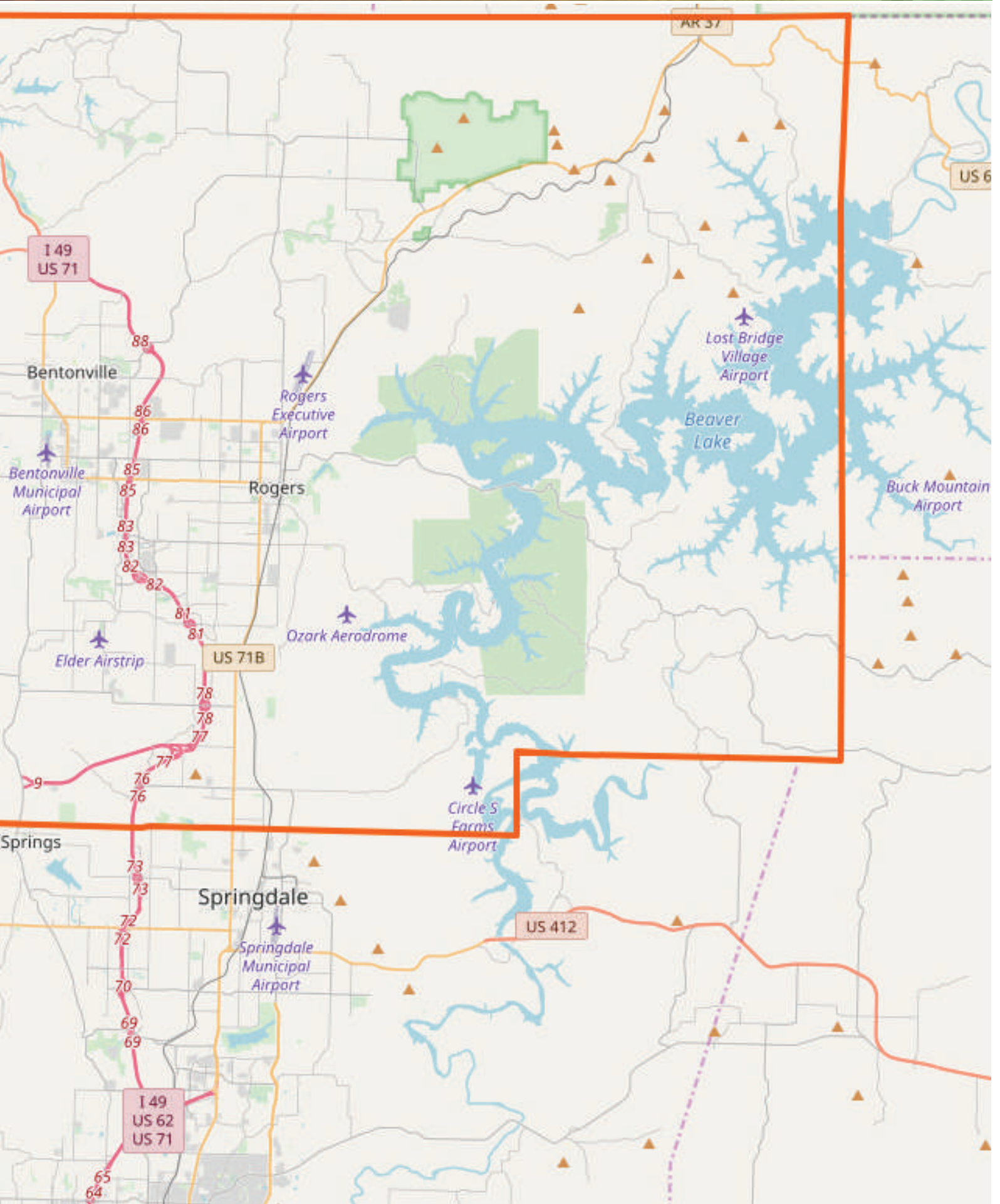


Country Swing Dance Class

ARKANSAS

Benton County





Shady Beach Campground

10% Off House Rentals
Rent one of our houses
(sleeping 8 or more)
for two consecutive weekdays
get 10% off!

Sunday - Monday
Monday - Tuesday
Tuesday - Wednesday
Wednesday - Thursday
(check-in 4pm)

Office: 417.475.6483

Reservations: 800.745.6481

Mt. Shira House – sleeps 8

Cottage – sleeps 12

Bunk Houses – sleeps 20

Elk River House – Sleeps 22



WWW.SHADYBEACH.COM

DIRECTORY

Assessor	(479) 271-1033
County Clerk	(479) 271-1013
Circuit Clerk	(479) 271-1015
Comptroller	(479) 271-5767
Collector	(479) 271-1040
Department of Motor Vehicles	(479) 273-2724
Election Commission	(479) 271-1049
Fire Marshal	(479) 271-1004
Health Department	(479) 986-1300
Human Services	(479) 273-9011
Judges Office	(479) 271-1000
Prosecuting Attorney	(479) 271-1030
Purchasing	(479) 271-1002
Recorder	(479) 271-1017
Sheriff	(479) 271-1008
Treasurer	(479) 271-1018

Overstreet's Jewelry

INC.

Since 1948



We feature Hearts On Fire, the world's most perfectly cut diamond!

CUSTOM DESIGN

We can do start to finish design and production of jewelry in your individual style

BIRTHSTONE & ANNIVERSARY GIFTS

Gifts to commemorate any occasion

Impeccable FINE JEWELRY

FAMILY OWNED SINCE 1948



ON THE SQUARE IN BENTONVILLE FOR MORE THAN 70 YEARS

103 N.E. 2nd Street / (479) 273-5424 / Tues-Fri 9am - 5pm, Sat 9am - 4pm, also by appointment



www.overstreetsjewelry.com

Heartland Marketing Inc.



PH: 309.349.3282
FAX: 309.349.3484

COMMUNITY GUIDES

FLYERS

COASTERS

MENUS

BANNERS

VINYL

PROMOTIONAL ITEMS



MARKETING FROM THE

Heart!

www.heartlandmarketinginc.com



1310 El Camino Drive | Pekin, IL 61554

