



KANSAS



2022 COMMUNITY GUIDE

CRAWFORD / LABETTE

COUNTY



**CONSTRUCTION
ENGINEERING
TECHNOLOGY**



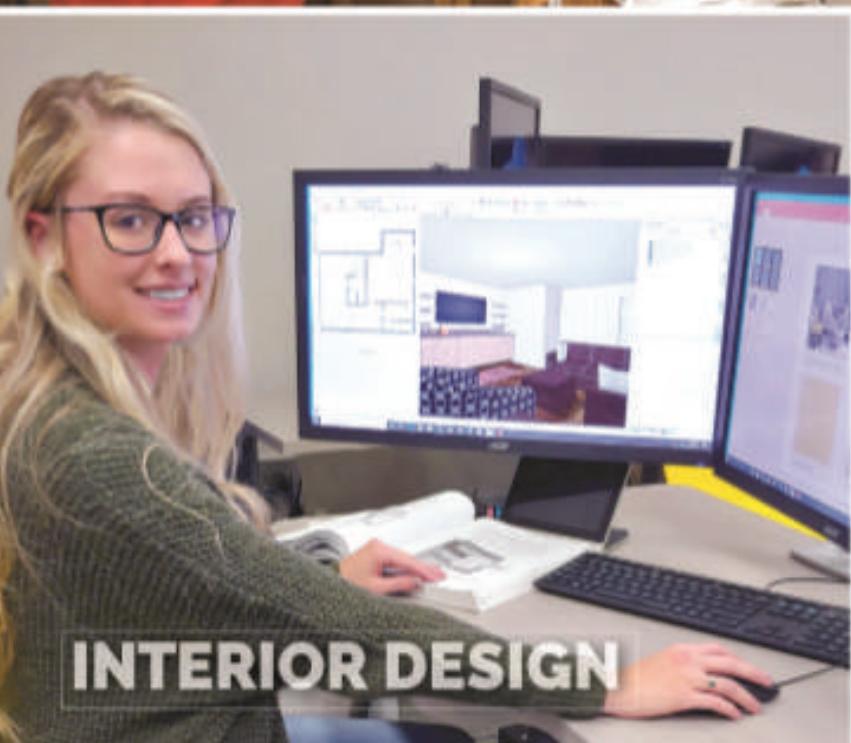
**CONSTRUCTION
MANAGEMENT**



**ELECTRICAL
TECHNOLOGY**



**ENVIRONMENTAL AND
SAFETY MANAGEMENT**



INTERIOR DESIGN

**THERE'S MORE TO
CONSTRUCTION
THAN MEETS THE EYE.**



**SCHOOL OF
CONSTRUCTION**

Pittsburg State University
Pittsburg, Kansas

pittstate.edu/construction

620-235-6555



WELCOME TO
Crawford & Labette
K A N S A S

CONTENTS

4-5 Crawford County At A Glance

6-7 Labette County At A Glance

A Closer Look:

8-9 City Of Pittsburg

10-11 City Of Oswego

16-19 Places To Visit/Things To Do

26 Directory



Ad Designer - Kylie Cutting
Book Designer - Teri Burkitt
Art Director - Kara Cutting | Published by HMI
All rights reserved (c) 2022 Heartland Marketing Inc.
1310 El Camino Drive | Pekin, IL 61554
Phone: 309.349.3282 | Fax: 309.349.3484
www.heartlandmarketinginc.com





At a glance
CRAWFORD
County KANSAS

Crawford County
38,818

Pittsburg	20,171
Frontenac	3,400
Girard	2,707
Arma	1,385
Cherokee	849
Mulberry	378

CRAWFORD CO, KS is a county located in Southeast Kansas. As of the 2019 census, the county population was 38,818. Its county seat is Girard, and its most populous city is Pittsburg. The county was named in honor of Samuel J. Crawford, Governor of Kansas.

Located in the Osage Cuestas and Cherokee Lowlands, it lies halfway between Kansas City, Missouri and Tulsa, Oklahoma. Crawford County, and much of southeast Kansas, was founded on coal mining, the Pittsburg-Weir Coalfield being located here, and is still known for mining today. Pittsburg State University is located in Crawford County.



In 1854, the Kansas Territory was organized, and in 1861 Kansas was admitted as the 34th U.S. state. The preceding years had been filled with violence as settlers arrived on both sides of the slavery question; the residents voting for Kansas to enter as a free state were the majority. In 1867, Crawford County was established (formed from Bourbon and Cherokee counties). It is named for Samuel J. Crawford, who was the governor in office at the time.

In the early 20th century, Crawford County was often referred to as the “Little Balkans”, because of the many immigrants who came here from that area of Europe. They came to work in the

mines, industrial work that did not require much English in the beginning. This area was the site of a number of illegal bootlegging operations, most of which were organized by immigrants in order to supplement their meager earnings as strip miners. During his term, Governor Walter R. Stubbs of Kansas made it his mission to stamp out this practice. According to the criminal justice scholar Ken Peak, “The Little Balkans drove Stubbs absolutely nuts. He had his hands full and sent people down to the Balkans to clean it up”. Despite this crack down, however, the governor was unable to eradicate the crime completely from the area.



At a glance
LABETTE
County KANSAS

Labette County
19,618

Parsons	9,736
Oswego	1,676
Altamont	1,144
Chetopa	1,238
Edna	417
Mound Valley	337
Bartlett	69
Labette	57

In the 1840s Labette County had a population mainly consisting of Osage people, although there were also many Cherokee and Euro-Americans. Many of the Euro-Americans were merchants with Osage or Cherokee wives.

Between 1871 and 1873, at least eleven people vanished in the vicinity of an inn and general store operated by the Bender family in Labette County. Following the disappearance of the Benders in 1873, it was discovered that they had apparently murdered a number of travellers. Between eight and eleven bodies were discovered buried on the premises. Governor Thomas A. Osborn offered a reward of \$2,000 for the apprehension of the Benders, but they were never found.



PITTSBURG



Pittsburg is a city in Crawford County, Kansas, United States, located in Southeast Kansas near the Missouri state border. It is the most populous city in Crawford County and southeast Kansas. As of the 2019 census, the city population was 20,171.

On October 23, 1864, a wagon train of refugees had come from Fort Smith, Arkansas, and was escorted by troops from the 6th Kansas Cavalry under the command of Col. William Campbell. These were local men from Cherokee, Crawford, and Bourbon counties. Their enlistment was over, and they were on their way to Fort Leavenworth to be dismissed from service. They ran into the 1st Indian Brigade led by Maj. Andrew Jackson Piercy near the current Pittsburg Waste Water Treatment Plant. They continued to the north when a small group of wagons broke away in an unsuccessful rush to safety. The Confederate troops caught up with them and burned the wagons. The death toll was three Union soldiers and 13 civilian men who had been with the wagon train. It was likely that one of the Confederates had also been killed. A granite

marker memorial for the “Cow Creek Skirmish” was placed near the Crawford County Historical Museum on October 30, 2011.

Pittsburg sprang up in the fall of 1876 on a railroad line being built through the neighborhood. It was named after Pittsburgh, Pennsylvania, and maps of the time give the town’s name as “New Pittsburgh”. George Hobson and Franklin Playter are credited with being the city’s founders, establishing a government after its beginnings as a coal mining camp in the 1870s. The city was incorporated in 1879. The “New” was dropped upon incorporation of the City as a third class city on June 21, 1880, with M. M. Snow as its first Mayor. In 1892 it was advanced to a city of the second class, in 1905 Pittsburg attained the rank of first class.

The first dwelling was built by J. T. Roach in July 1876. The first post office in Pittsburg was established in August, 1876. The post office’s name was shortened from “New Pittsburgh” to “Pittsburgh” in 1881 and to “Pittsburg” in 1894. The latter renaming came after



KANSAS

Crawford County

the United States Board on Geographic Names, in the interest of standardization, recommended that the 'h' be dropped from place names ending in "burgh".

Pittsburg is the home to Pittsburg State University, founded in 1903 as a normal training institution. Through the years the College became more diversified in its aims and goals, so that it became a multi-purpose institution. It has always had a strong manual and industrial arts program and has trained many of the area's public and private school teachers.

In 1879, two miners from Joplin began the first commercial attempts at mining in close proximity of Broadway Street. A relic of the city's coal mining days was the Pittsburg & Midway Coal Company, founded in 1885, and one of the oldest continuously running coal companies in the United States (even though its headquarters moved several years ago to Denver, Colorado after the Kansas mines closed). In September 2007, Chevron which owned the company, merged it with its Molycorp Inc. coal mining division

to form Chevron Mining, thus ending the Pittsburg corporate name. Midway referred to a coal camp in eastern Crawford County, Kansas that was "midway" between Baxter Springs, Kansas and Fort Scott, Kansas. Kenneth A. Spencer, whose father was among the founders of the company was to play an important role in Kansas and Missouri philanthropy.

Pittsburg was also the most heavily unionized city in Kansas at the beginning of the 20th century. In addition to some coal mining, the economic base of the City now rests on industry.

The city has a rich cultural heritage from many Southern and Eastern European mine workers who settled in and around Pittsburg and Southeastern Kansas. It is situated in a once productive coal field. It now relies heavily on education and government-related employment.

OSWEGO



Oswego is located on the site of an Osage village called No tse Wa spe, which means “Heart Stays” or more loosely translated, “Quiet Heart.” Jesuit Missionaries from Osage Mission (now St. Paul, Kansas) who worked among the Osages called the village “Little Town,” probably because the band of Osages who lived in the village were of the “Little Osage” division of the Osage People. More specifically, the Osage Village of Little Town was described as “Little Town Above” by the Jesuits, to distinguish it from another village, which was sometimes located just to the east of Little Town, called “Little Town Below.” While Osage villages were moved quite often (according to weather, hunting conditions, and sanitary conditions) Little Town Above was generally located on the bluff overlooking the Neosho River, where Oswego sits today. Little Town Below often sat near Horseshoe Lake, in the Neosho River Valley about a mile due east of Oswego. During the 1850s, Little Town was often referred to as “White Hair’s Town,” in honor of a resident of the village named Iron Hawk. Iron Hawk was named Grand Tsi Shu Chief (or Peace Chief) of the Osage Nation (through the 19th Century, it was tradition for the Osage Chief to take the name “White Hair”).

Several murals can be found around the city. The most famous is this reproduction of E. Marie Horner’s “The Village of White Hair” depicting the relationship between white trader John Mathews and the Osage, led by Chief White Hair.

A study of the baptismal records of the Jesuits at Osage Mission reveals that several white or mixed white and Osage families lived in or near Little Town before the Civil War. Several mixed white and Cherokee families also lived in or near the present site of Little Town, likely just east of the village in the Cherokee Neutral Lands or to the south, near Chetopa.

One family of mixed Osage blood that lived at Little Town before the Civil War was the John Allan Mathews family, who operated a blacksmith/gunsmith shop on the site and ran a trading post here, as well as one at Osage Mission and one at Fort Gibson. Mathews first purchased the trading post at Little Town from Augustus Chouteau in either 1838 or 1843, depending upon the source. Mathews was married to Mary Ann Williams until her death and then to her sister Sarah Jane Williams, daughters of William Sherley Williams,

KANSAS

Labette County

better known as “Old Bill Williams” and his Osage wife, A-Ci'n-Ga or Wind Blossom.

Mathews was a slaveholder from Kentucky, as evidenced by the baptismal records of the Osage Mission. Before the Civil War, Mathews was involved in driving off settlers from the adjacent Cherokee Neutral Lands and in stirring Southern sympathies among Native Americans living on the frontier. Early in the spring of 1861, Mathews was commissioned a captain in the Confederate Army and given orders to organize a company of soldiers from among sympathetic Native Americans, specifically, the Quapaw. In June 1861, he held a meeting at the house of Larkin McGhee in the nearby Osage village of Chetopa and organized a company of Osages and mixed-blood Cherokees for the Confederate Army. One of his sons, John Mathews, Jr. joined this company. September 8, 1861, Mathews led another company, this one made up of Osages, mixed-blooded Osages and Cherokees, and border ruffians. This second company raided and looted Humboldt, Kansas, capturing no less than a dozen freed slaves. James Lane put a \$1000.00 bounty on the head of Mathews, who was soon betrayed by a man who worked at his ranch. The man helped James

G. Blunt and the Kansas 6th Volunteer Cavalry (and the Humboldt Home Guard) track down Mathews. He was killed at the house of William Blythe, rented by Lewis Rogers, just south east of Chetopa on the Cherokee Neutral Lands.

The next day, local residents were tried by James G. Blunt, in an impromptu court martial. Mathews ranch and trading post at Little Town was subsequently burned. The ranch had consisted of a two story, double log cabin (covered with burr siding, and sporting plastered walls), a blacksmith shop, a stable, slaves quarters, a well house, a smoke house, a woodshed, other out buildings, as well as two race tracks. He had title to 100 acres (0.40 km²) on the bluff and 30 acres (120,000 m²) below. He had no less than 100 head of cattle and 50 horses. His possessions and the stock of the trading post (including 50 buffalo robes and six bear skins) were distributed among the volunteers who had tracked him down. Little Town and many houses at Chetopa were also burned. The site of Little Town remained unoccupied by whites during the war. Most, but not all, of the Osages fled Kansas during the Civil War. Mathews own children fled to Texas and Kentucky.



1035 N. Hwy 69
Frontenac, KS 66763
Ph: (620) 235-0600

www.a1aircool.com

The 'know-how' accumulated in more than thirty years of practical experience goes into every A-1 Air job.

Whether your needs are residential or commercial, A-1 Air will custom design and install:

- ✓ Central air conditioning systems
- ✓ Heating systems
- ✓ Electronic air cleaners
- ✓ Heat pumps
- ✓ Humidifiers
- ✓ We work in both existing structures and new construction



Service and Repair

A-1 Air service is also available for your existing equipment. We repair and service all makes. Replacements, modifications, adjustments, repairs, etc. are provided promptly and economically.

CALL US TODAY
(620) 235-0600



WE DO ALL POOLS & MORE

ALL POOLS ♪ FENCING ♪ DECKS
COOL DECK ♪ LANDSCAPING

*Swimming Pool Sales, Service, and Supplies in
Pittsburg, KS. We are available when you need us to
provide answers and solutions for any problems you
may experience. We charge fair and reasonable rates,
which are provided before the service.*



302 S Broadway Pittsburg, KS 66762

(620) 232-7665 (POOL)

SINCE 1914

Standard & Specialty Hardware



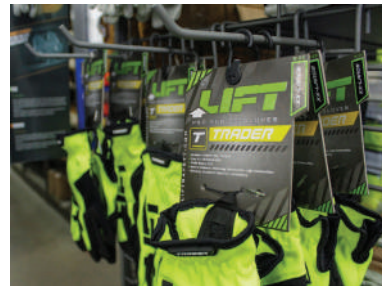
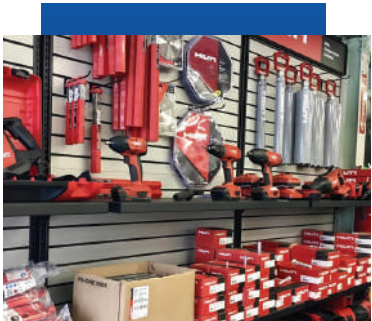
& Supply Company, Inc.

genmachinesupply.com



For 105 years we have provided exceptional knowledge and products to our loyal customers.

Our product include hardware, tools, paint, batteries, hydraulic lines, and manufacturing equipment. We offer top brands from Milwaukee, DeWalt and Wilti.



510 N Elm St
Pittsburg, Kansas



CALL OR STOP IN TODAY!
(620) 231-1550

Phone: (800) 392-4942 | Fax: (620) 231-6421

1308 North Walnut Street Pittsburg, KS 66762

CDL

ELECTRIC

one company many solutions

CDL began in 1964, as S&S Electric, providing electrical services for residents and businesses around Pittsburg, Kansas. We're now one of the area's fastest growing companies. Staff has expanded from 85 to over 460 in the last three years. We now have 6 offices across the Midwest. CDL operates in over 35 States and serving over 40,000 customers.

- Electrical • Fabrication • Fire Protection • Generators
- Heating & Cooling • Plumbing • Refrigeration • Security
- Signals • High Voltage • Signs • Directional Boring
- Solar Energy • Warning Systems



Railroad — Residential
Business — Emergency
Municipal



www.cdlelectric.com



Places to visit

and things to do

Pittsburg State University

1701 S Broadway St
Pittsburg, KS 66762-7500
(620) 231-7000

ArtForms Gallery

620 N Broadway St
Pittsburg, KS 66762-3921
(620) 240-0165

Veterans Memorial Amphitheater

1909 S Rouse Ave
Pittsburg, KS 66762
(620) 235-4768

Kansas Crossing Casino

1275 S Highway 69
Pittsburg, KS 66762-6259
(620) 240-4400

Kiddieland At Lincoln Park

813 Memorial Dr
Pittsburg, KS 66762
(620) 231-8310

Quail Farm Mined Wildlife Area

507 E 560th Ave
Pittsburg, KS 66762-7236
(620) 231-3173

Miner's Memorial in

Immigrant Park

2nd & Walnut
Pittsburg, KS 66762

Crawford County Historical

Museum - 651 S Highway 69
Pittsburg, KS 66762-8600
(620) 231-1440

Memorial Auditorium and Convention Center - 509 N Pine St

Pittsburg, KS 66762-3818
(620) 231-7827

Wilderness Park

907 W McKay St
Pittsburg, KS 66762
Fishing • Trails

Crawford County Convention & Visitors Bureau - 117 W 4th St

Pittsburg, KS 66762-4801
(620) 231-1212

Kiwanis Park

1905 S Joplin St
Pittsburg, KS 66762-6356
Playground

KANSAS

Crawford County

Hotel Stilwell

707 N Broadway St
Pittsburg, KS 66762-3905
(620) 231-1907

23rd Street Bike Park

600 E 23rd St
Pittsburg, KS 66762-2956
Outdoor Activities • Biking Trails

Watco Trail

Trail end points: Trail Head Park at N.
Broadway St. and W. 11th St. and N.
Georgia St. and W. 1st St.

Pittsburg Aquatic Center

708 W 9th St
Pittsburg, KS 66762-3658
(620) 231-7667

Woods Farms Pumpkin Patch

1115 S 200th St
Pittsburg, KS 66762-6828
(620) 249-5223

Colonial Fox Theatre

407 N Broadway St
Pittsburg, KS 66762-3913
(620) 235-0622

Your Downtown Mural

501 N Broadway St
Pittsburg, KS 66762-3903
Sights • Landmarks

The Mall Deli

202 E Centennial Dr, Meadowbrook
Mall, Pittsburg, KS 66762-6572
(620) 231-7590

Paul B Leffler Rotary Park

721 W 4th St
Pittsburg, KS 66762-4609
(620) 231-8310

Jim's Steak House And Lounge

1912 N Broadway St
Pittsburg, KS 66762-2812
(620) 231-5770

Schlanger Park

755 E 4th St
Pittsburg, KS 66762
(620) 231-4100

Gusano's Chicago Style Pizza

200 E Centennial Dr Ste 5&6
Pittsburg, KS 66762-6507
(620) 308-5461

Places to visit

and things to do

CURIOUS MINDS DISCOVERY ZONE

1810 Main St
Parsons, KS 67357-3366
(620) 778-2657
cmdzparsons.com

ANGHOLDUR FARMS

1610 Southern Ave Fall Family Fun,
Parsons, KS 67357-5202
(913) 200-6753
angholdurfarms.com

COSMIC CASTLE

110 S 18th St
Parsons, KS 67357
(620) 717-4105
cosmic-castle.com

BALLERS

2007 Belmont Ave
Parsons, KS 67357
(620) 423-3016

MULTI-ARTS ACADEMY

301 N 30th St
Parsons, KS 67357

PARSONS ARBORETUM AND EDUCATIONAL CENTER

S. 21st St. & Briggs Ave
Parsons, KS 67357
(620) 421-7030
parsonsk.com

DOS FRONTERAS MEXICAN BAR & GRILL

3400 Main St
Parsons, KS 67357
(620) 717-7437

PARSONS THEATRE

210 S 17th St
Parsons, KS 67357
(620) 421-4240

ACME CINEMA

210 S 17th St
Parsons, KS 67357
(620) 421-4404

PK BOWL

103 E Main St
Parsons, KS 67357
(620) 423-0003
pkbowl.com

TROTNIC RECYCLING

5305 Main St
Parsons, KS 67357
(620) 421-5205

INSPIRATION POINT

2297 Glendale Rd
Joplin, MO 64804

LA/ GELBIEH CATTLE

Edna, KS 67342
(620) 922-3502

KANSAS

Labette County

FOREST PARK DISC GOLF COURSE

1138-1298 Broadway Ave
Parsons, KS 67357

CHERRYVALE MUSEUM

215 E 4th St
Cherryvale, KS 67335
(620) 336-2241

FAMILY FUN CENTER

2201 SE Adams Blvd
Bartlesville, OK 74006
(918) 335-1848

ELK CITY STATE PARK HIKING TRAILS

4825 Squaw Creek Rd
Independence, KS 67301
(620) 331-6925

BAXTER SPRINGS HERITAGE CENTER & MUSEUM

740 East Ave
Baxter Springs, KS 66713
(620) 856-2385
baxterspringsmuseum.org

OSWEGO HISTORICAL MUSEUM/GENEOLOGY SERVICES

410 Commercial St
Oswego, KS 67356
(620) 795-4500

LITTLE HOUSE ON THE PRAIRIE

2507 3000th Rd
Caney, KS 67301
(620) 289-4238

littlehouseontheprairiemuseum.com

MAIN STREET AXE COMPANY

216 S Broadway St
Pittsburg, KS 66762
(620) 266-1685
mainstreetaxe.com

CHERRY BOWL LANES & GRILL

101 N Olive St
Cherryvale, KS 67335
(620) 336-8981

COLEMAN THEATER

103 N Main St
Miami, OK 74354

MARTIN AND OSA JOHNSON SAFARI MUSEUM

111 N Lincoln Ave
Chanute, KS 66720
(620) 431-2730
safari-museum.com

DALTON DEFENDERS MUSEUM

113 E 8th St
Coffeyville, KS 67337
(620) 251-5944

daltondefendersmuseum.com



We are a local farm and home store.
We carry all your animal needs and a whole lot more!

(620) 231-5144



linda@blueribbon-farm.com • 1103 E 4th St, Pittsburg, KS 66762

Heartland Marketing Inc.

COMMUNITY GUIDES FLYERS COASTERS
MENUS BANNERS VINYL PROMOTIONAL ITEMS

PH: 309.349.3282
FAX: 309.349.3484



MARKETING FROM THE
Heart!

www.heartlandmarketinginc.com

1310 El Camino Drive | Pekin, IL 61554





Collision
Custom
Air Brushing
Motorcycles
and More!

202 N Elm St | Pittsburg, KS 66762

Locally Owned and Operated

Since 1952

FREE ESTIMATES

sharpsautobodycollision.com



Phone
620.231.6011

Emergency
417.793.6619



Find Us FAST In
Names
and
NumberS
★★★★ Five Star Phone Books!





Bob's Grill

Home Of The Cowboy
The Best Way To Start Any Morning

1014 N Broadway St • Pittsburg, Kansas
(620) 232-9738





WILD SUNFLOWER

Kansas State Flower

In 1903, Kansas designated the wild native sunflower as official state flower and floral emblem.

The sunflower is also featured on the Kansas quarter, state flag, and even the nickname for Kansas is “The Sunflower State.”

Native Americans used native sunflowers for food over 3,000 years ago. These wild sunflower seeds were only about 5 mm. long. Over hundreds of years and careful husbandry (selecting only the largest seeds for cultivation), the Plains tribes began the development of today’s large modern sunflower, rich with oil.

The heads of the sunflower consist of 1,000 to 2,000 individual flowers joined together by a receptacle base. The large petals around the edge of a head are actually individual ray flowers, which do not develop into seed.

There are more than 60 species of sunflowers. The native sunflower grows to 15 feet tall with flower heads up to 2 feet in diameter, and can produce over 1,000 seeds from one plant. The flower head turns and faces the sun throughout the day - tracking the sun’s movement. Sunflower seeds are rich in protein and yield a high-quality vegetable oil.

statesymbolsusa.org



RESCARE[®]

COMMUNITY LIVING



- Case Management
- Home & Community-Based Services
- Group Homes
- Periodic & Supported Living Services
- Day Programs & Activities
- Now Hiring Caring Staff \$10 - \$12 hr

The ResCare
Difference



Community
Living
Services



NationWide
Locations



620-421-2454

1772 East 24000 RD
Parsons KS 67357

www.rescare.com/residentialservices



[Facebook.com/ResCareKansasEast](https://www.facebook.com/ResCareKansasEast)

HELPING PEOPLE LIVE THEIR BEST LIVES...



Get Almost Anything You Want (or need)

Delivered from Amazon Prime in One Day or Less

(BPT) - We all want to find both essentials and fun products easily - with lots of variety - and get them delivered fast, and for free. This summer, spend more time with friends and family and less time shopping. Prime Free One Day ensures members can find last-minute birthday presents, sunscreen and beach towels for an impromptu getaway, as well as closet organizers and cleaning products - all delivered the very next day.

Amazon is in the process of expanding one-day delivery with Amazon Prime. Today, Prime Free One Day is available to members with no minimum purchase amount on more than ten million products, coast to coast. Millions of members are already noticing and enjoying free one-day delivery right to their door, garage and even to their car.

Here are some questions we asked about Prime Free One Day.

WHERE IS PRIME FREE ONE DAY AVAILABLE TODAY?

Prime Free One Day is available on ten million products, coast to coast, and customers across the U.S. may have already noticed expanded one-day selection when they shop. In fact, Amazon customers in thousands of cities and towns across 44 major metropolitan areas already have access to millions of items with free same-day delivery.

WHAT PRODUCTS ARE AVAILABLE FOR ONE-DAY DELIVERY?

Over ten million products are available for one-day delivery and the selection is continually increasing. Amazon's vast selection varies from the best of Amazon entertainment to everyday necessities like

diapers, apparel and household items, as well as consumer electronics and more.

HOW IS ONE-DAY DELIVERY MADE POSSIBLE?

Amazon has built its network for more than 20 years, growing it to include 110 fulfillment centers, 40 package sorting centers, 100 delivery stations and 20 air gateways - all to be closer to customers. This network allows the company to deliver orders faster and more efficiently.

WHAT ONE-DAY DELIVERY OPTIONS DOES AMAZON OFFER?

To make delivery even more convenient, Amazon offers multiple package pickup and return options, including Amazon Locker and Amazon pickup locations in towns and cities across the U.S. Other delivery options even include in-garage, in-car and in-home deliveries using Key for Amazon.

Amazon obsesses over making customers' lives easier, better and more fun with Prime. In fact, Amazon customers in thousands of cities and towns across 44 major metropolitan areas already have access to millions of items with free same-day delivery. Simply look for items marked as eligible for delivery today, order before lunch and get them by bedtime. For delivery in a matter of hours, members can also use Prime Now to receive grocery delivery from Whole Foods Market in nearly 90 U.S. metros, or grocery pickup in as little as 30 minutes in 30 metros, with more to come in 2019.

To learn more about Amazon Prime or start a free trial, visit amazon.com/prime.

CRAWFORD COUNTY DIRECTORY

Appraiser
(620) 724-6431

County Clerk
(620) 724-6115

Coroner
(620) 724-6990

Counselor
(620) 724-6390

Elections
(620) 724-6115

Emergency Management
(620) 724-7156

Health Department
(620) 231-5411

Motor Vehicle
(620) 724-4959

Register of Deeds
(620) 724-8218

Sheriff's Office
(620) 724-8274

Traffic Court Clerk
(620) 231-0380

Treasurer
(620) 724-8222

Vehicle Inspection
(620) 724-8274

Zoning
(620) 724-6168

LABETTE COUNTY DIRECTORY

Appraiser
(620) 795-2548 ext 329

Board of County Commisioners
(620) 795-2138 ext 310

County Clerk
(620) 795-2138

County Counselor
620-795-2754

County Treasurer
(620) 795-2918

Emergency Management
(620) 421-4350 ext 16

Health Department
(620) 421-4350 ext 15

Public Records
(785) 296-1400

Public Works
(620) 784-5391

Register of Deeds
(620) 795-4931 ext 341

Sheriff's Office
(620) 795-2565

Vehicle Tags & Titles
(620) 421-5255



MAKING REAL ESTATE EASY

Residential-Commercial-Land

Call One Of Our Professionals



Suzanne Wood
620-423-9242



Carol Bush
620-423-9802



Stephanie Reitemeier
620-423-2209



**Wood-Dulohery
Real Estate**

(620) 421-6840

1725 Washington • Parsons



Janice Dulohery
620-423-9252



Sherry Harrell
620-717-1717



Ike Reitemeier
620-605-8574





(620) 232-6522

1314 E 4th St Pittsburg, KS 66762

**Come See Us For All Your Pet
And Pet Supply Needs!**



"I absolutely love this place! The staff is always helpful and friendly. Dan is a wealth of knowledge and genuinely cares about animals!"