

2021

DUPAGE

County ILLINOIS

PLACES to go,
THINGS to do
and More Inside....!



2021 COMMUNITY GUIDE

Image by en.wikipedia

Find us on
facebook



415 Ogden Ave | Westmont, IL 60559



Commercial & Residential Locksmith Services

Westmont's Top Choice for Locksmith Services



- New locks/re-keying services
- Repairs/service on most lock brands
- Residential safes
- ADA handicap door openers
- Steel door and frame replacements/repairs
- Electronic keypad devices and lock hardware
- Electric strikes and installation
- ADA door closers and automatic operators
- Exit devices and related exit hardware
- Key control cylinders and key systems
- High security/key control locks and cylinders
- Electronic keypad lock-sets
- Commercial keying and master keying
- Safes and safe combinations changes



Serving You Since 1963

**FOR YOUR SECURITY
NEEDS
CALL US TODAY!**

**630-968-4727
630-968-5443**

suburbanlock.com



WELCOME TO
DUPAGE COUNTY
ILLINOIS

CONTENTS

4-5 DuPage County At A Glance

A Closer Look:

6-7 Wheaton

10-11 How To Take A Dream Cruise

12-13 Places To Visit/Things To Do

20-21 County Map

22 Directory



Design, Layout, & Published by HMI
All rights reserved (c) 2021 Heartland Marketing Inc.
1310 El Camino Drive | Pekin, IL 61554
Phone: 309.349.3282
Fax: 309.349.3484
www.heartlandmarketinginc.com





At a glance

DuPAGE

DuPage County

918,595

Naperville (partial)	147,122
Wheaton	53,389
Downers Grove	49,473
Elmhurst	46,387
Lombard	43,815
Carol Stream	40,069
Addison	36,902
Glendale Heights	34,145
Glen Ellyn	28,042
West Chicago	27,221
Westmont	24,767
Lisle	22,930
Darien	22,085
Bloomington	22,075
Villa Park	21,882
Wood Dale	13,813
Warrenville	13,246
Medinah	12,542
Winfield	9,637
Wayne	8,770
Itasca	8,728
Clarendon Hills	8,653
Willowbrook	8,543
Oak Brook (partial)	8,070
Oakbrook Terrace	2,158

DUPAGE CO, IL Just 20 miles west of Chicago, DuPage County is one of the healthiest, wealthiest, and greenest counties in Illinois. From biking paths to hiking trails, golf courses to polo clubs - we offer a variety of sports & recreation options for the health enthusiast.

As of the 2020 census, the population was 918,595 making it Illinois' third-most populous county. Its county seat is Wheaton. DuPage County has become mostly developed and suburbanized, although some pockets of farmland remain in the county's western and northern parts. The county has a high socioeconomic profile and residents of Hinsdale, Naperville and Oak Brook include some of the wealthiest people in the Midwest. On the whole, the county enjoys above average median household income levels and low overall poverty levels when compared to the national average. In 2018 Niche ranked two DuPage municipalities (Clarendon Hills #3 and Naperville #16) amongst the top 20 best places to live in America.

DuPage County was formed on February 9, 1839 out of Cook County. The county took its name from the DuPage River,

which was, in turn, named after a French fur trapper, DuPage. The first written history to address the name, the 1882 History of DuPage County, Illinois.

DuPage county today, has a wide range of shopping areas, palate-pleasing dining, welcoming hotels and resorts, and entertaining attractions, events and recreation.

Included in the county are 39 municipalities, 20 of which lie entirely within county limits. One of the nation's wealthiest counties, DuPage is rich in many types of commerce and is second only to Cook County in tourism revenue.

DuPage also plays host to a rich, local music and theatre scene. Some of the better-known bands to come out of the area include The Hush Sound, Lucky Boys Confusion, and Plain White T's. Oakbrook Terrace's Drury Lane Theatre is an important live theatre in DuPage County. The Tivoli Theatre, one of the first theaters in the United States to be equipped with sound, is still in use in Downers Grove. In addition to showing movies, the Tivoli is home to several local performing arts groups.

The county is fill with wonderful architecture. The 31-story Oakbrook Terrace Tower in Oakbrook Terrace, designed by Helmut Jahn, is the tallest building in Illinois outside of Chicago. The Elmhurst Art Museum is housed in a Mies Van Der Rohe building along with the Frank Lloyd Wright house in Elmhurst.



WHEATON

Welcome to Wheaton! Named one of the Top Walkable Cities in the United States. Proudly the County Seat of DuPage County, the scenic City of Wheaton is a distinctive community situated within the natural spaces of the region. The village is just 25 miles west of Chicago, which is easily accessible from Wheaton's downtown Metra station, and is convenient to major highways and airports.

In 1857, the Illinois state legislature authorized an election to be held to decide the question of whether the DuPage county seat should remain in Naperville. Naperville won the election by a vote of 1,542 to 762. Hostility between the two towns continued for the next decade and another election was held in 1867, in which Wheaton narrowly won by a vote of 1,686 to 1,635. At a cost of \$20,000, the City of Wheaton quickly built a courthouse to house a courtroom, county offices, and a county jail. The building was dedicated on July 4, 1868.

DOWNTOWN WHEATON

Wheaton is home to a vibrant downtown with many restaurants, shops and services. The Downtown Wheaton Association hosts many events throughout the year to promote local businesses including The French Market, The Chili Cookoff, Vintage Rides, Boo-palooza (Downtown Wheaton Trick-or-Treat), A Dickens of a Christmas, Wheaton Wedding Walk and Wheaton's Wine & Cultural Arts Festival.

ATTRACTIONS

Wheaton is home to one of the jewels of the entire

Chicagoland region, Cantigny Park home to the McCormick House, First Division Museum, Championship Golf and spectacular gardens. Other notable attractions in Wheaton include the DuPage County Historical Museum. This special museum is housed in what was formerly known as the Adams Memorial Library. The building was erected in 1891 by John Quincy Adams as a gift to the community of Wheaton in memory of his late wife, Marilla Phipps Adams.

THEATRE

There is a dynamic community arts scene in Wheaton including the Westside Improv Studio, Wheaton Drama, and stay tuned for the comeback of the Wheaton Grand Theater. Just minutes from Wheaton is The McAninch Arts Center at College of DuPage (The MAC) home to several resident professional ensembles, student productions and world-class touring attractions, plus the Gahlberg Gallery for visual arts.

WHEATON COLLEGE

Wheaton College is located just east of downtown Wheaton. Sometimes referred to as "The Harvard of Evangelical schools", Wheaton College is known for being an interdenominational destination school for devout Christian students seeking an elite liberal arts education. It's campus campus features the Billy Graham Center, named for the college's most famous alumnus, which contains a museum dedicated to both the history of American evangelism and the international ministry of Billy Graham.

ILLINOIS

DuPage County



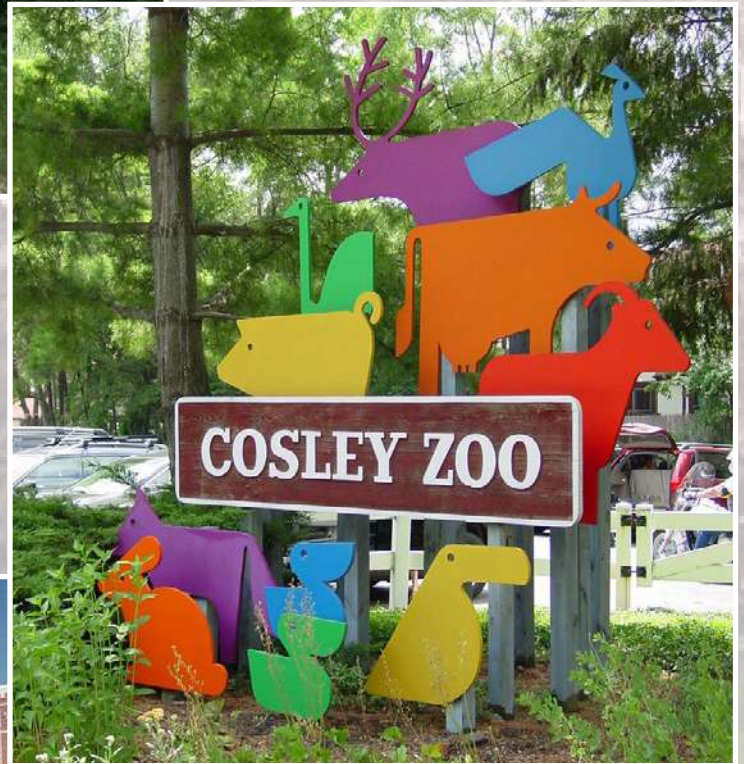
ILLINOIS PRAIRIE PATH

The Illinois Prairie Path (often called the Prairie Path and abbreviated IPP) is a network of 61 miles (98 km) of bicycle trails, mostly in DuPage County, Illinois.

Most of the trail is categorized as rail-to-trail, meaning that the bicycle path is built atop an old railroad right of way.

COSLEY ZOO

An AZA-accredited zoo located in Wheaton, Illinois. Open year-round, the zoo, which is situated on 5 acres of land, is built on the site of a historic train station and consists of domestic animals, as well as wildlife that is native to Illinois.



WHEATON STATION

Located at ground level and consists of two side platforms. Three tracks run between the platforms, though one does not access the station. There is a station house next to the north track, which is open 5 AM - 6 PM. Tickets are available at the station house on weekdays.

Olsen's Accounting & Tax Services



ellieolsen1040@sbcglobal.net • www.olsentax.com



IRS Problem
Resolution



Payroll
Services



Bookkeeping &
Accounting



Tax
Services

Olsen's Accounting & Tax Service is the area's preferred tax service company. We are an enrolled agent with over 40 years of experience in the industry and are fully prepared to help you when you come to us for IRS problems, payroll services, bookkeeping services, accounting services, and tax services. We take pride in providing competent, personal attention to make you feel at ease about your finances.

The expert team at Olsen's Accounting & Tax Service offers affordable and reliable tax solutions that meet your needs.



630-406-9052

12 S Van Buren St, Batavia, IL 60510

At All Flowers With Expressions, we are more than just your average florist! Speedy, reliable deliveries and customer care that's beyond compare... these are just two things that set us apart. Since 1986, All Flowers With Expressions has sought to provide clients with beautiful flowers complemented by outstanding service and value.

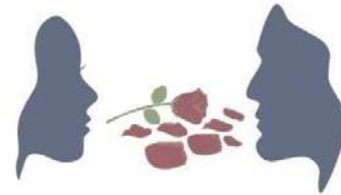
www.allflowerswithexpressions.com

(630) 690-2809

FULL SERVICE WHEATON, IL. FLORIST
100% SATISFACTION FOR OVER 35 YEARS



Mon - Fri 9:00 AM - 5:00 PM
Sat - 9:00 AM - 3:00 PM
Sun - CLOSED -



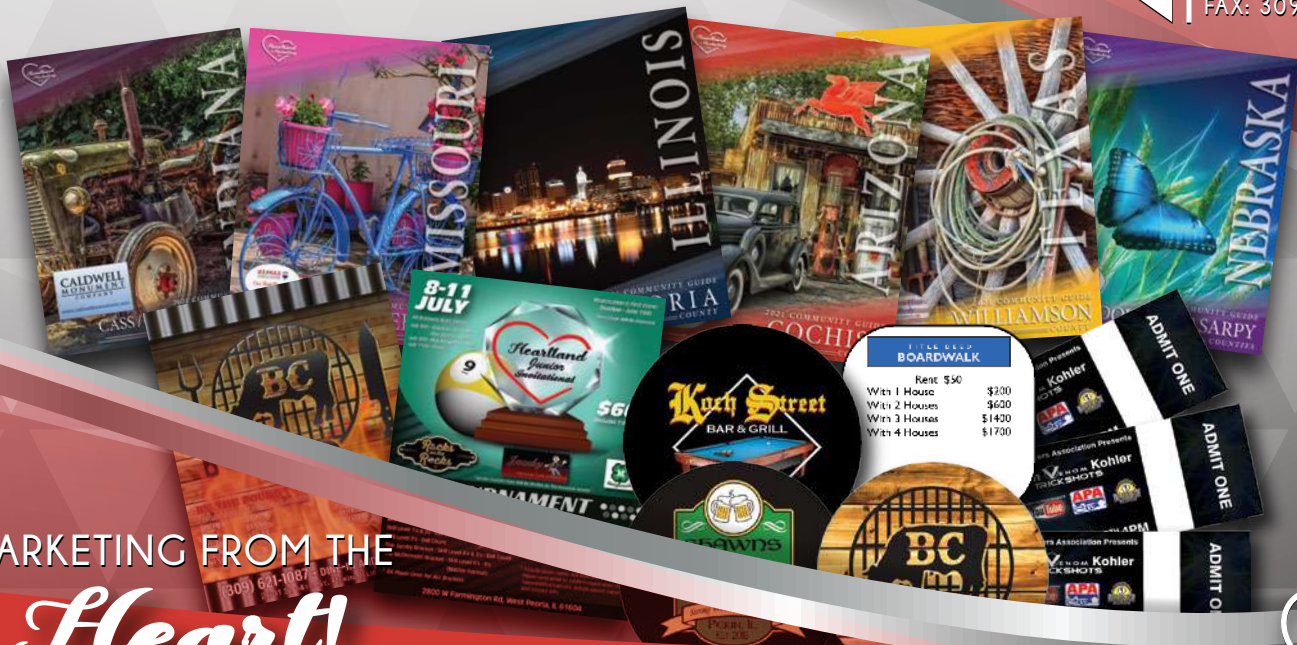
All Flowers With Expressions

26w 225 Geneva Rd, Wheaton, IL 60187

COMMUNITY GUIDES FLYERS COASTERS
MENUS BANNERS VINYL PROMOTIONAL ITEMS

Heartland Marketing Inc.

PH: 309.349.3282
FAX: 309.349.3484



MARKETING FROM THE
Heart!

www.heartlandmarketinginc.com

1310 El Camino Drive | Pekin, IL 61554





How to take a DREAM CRUISE on an Authentic Sailing Ship

(BPT) - If your fondest dreams are more about the journey than the destination, a trip on a legendary four-masted windjammer in the Caribbean may be just the adventure you're looking for.

Finding an authentic sailing ship for your nautical adventure is not out of reach. Sea Cloud Cruises sail the traditional way - by hand. The yacht is designed for up to 64 passengers, with a crew of about 60. You can watch the ship's sailing crew climb the rigging and work the sails as you journey to smaller ports and destinations - and you can even volunteer to help work the ropes, if you like.

A 360-foot windjammer with 29 sails and a main mast towering to 184 feet, the tall ship was built in 1931 as a private yacht for heiress and founder of General Foods Marjorie Merriweather Post and husband Edward F. Hutton. Shipboard guests included the rich and famous, such as author James Michener. The ship was restored in 2011 by a group of German businessmen seeking to retain its opulence and beauty.

Every journey provides an "Open House" cocktail hour where guests can view all the staterooms, including the luxurious cabins created for the heir-

ess and her husband. Other cabins have more modern furnishings, most with picture windows, and some with doors opening to Caribbean breezes on the Promenade Deck. Travelers enjoy personal service, with many crew members staying with the line for over 10 years, and some even more than 30 years.

While the settings may be luxurious, the on-board experience is informal, with no assigned seating at meals, a casual dress code and an intimate atmosphere. American and European guests mingle and relax while enjoying Michelin-star quality meals out on the deck or inside the dining room, featuring fresh seafood and produce obtained during the voyage at Caribbean ports like St. Barts, the British Virgin Islands or Bequia Island in St. Vincent and the Grenadines. The Caribbean has been the ship's destination since the beginning, so the long-lasting contacts between the company and local suppliers provide the best quality products for unforgettable meals. The smaller size of the ship allows her to visit lesser-known ports of call, far from typical tourist destinations. Often small Zodiac boats are used to let passengers visit quiet island beaches or indulge in a little snorkeling. The Caribbean offers ideal sailing due to the east-to-west prevailing trade winds, making it the perfect destination for the yachts.

On most of the 7- to 14-day Caribbean itineraries, half the day is spent sailing, allowing guests to enjoy the beauty of the sailing ship and revel in the journey. For those who love to sail, it's a dream

come true. Passengers can visit the ship's deck any time, stopping at the bridge to speak to the captain or the officer on duty, 24/7. The engines only run when needed, using low-sulfur diesel, so the trip is an example of sustainable tourism. Travelers seeking a longer voyage can travel the crossing from Europe to the Caribbean, a two-and-a-half-week trip.

The ship spends summers sailing the Mediterranean, but winters are prime for some of the best sailing in the world - following in the wake of buccaneers throughout the islands of Lesser Antilles and other unique Caribbean destinations.

A second ship, Sea Cloud II, is more modern but still sailed the traditional way, by hand, with 23 sails and a 188-foot main mast. This ship carries up to 94 guests, with a crew of about 65. The company will christen a third ship in summer 2020.

Learn more, find stunning videos or take a virtual onboard visit, at SeaCloud.com.



Places to visit and things to do

Addison Center for the Arts

213 N. Lombard Road | Addison, IL 60101
(630) 458-4500

Addison Historical Museum

135 W. Army Trail Bld | Addison, IL 60101
(630) 628-1433

Addison Park District

120 E. Oak Street | Addison, IL 60101
(630) 233-7275

Centennial Beach

500 W. Jackson Avenue | Naperville, IL 60540
(630) 848-5000

Cosley Zoo

1356 N. Gary Avenue | Wheaton, IL 60187
(630) 665-5534

DuPage Children's Museum

301 N. Washington Street | Naperville, IL 60540
(630) 637-8000

DuPage Children's Museum

301 N. Washington Street | Naperville, IL 60540
(630) 637-8000

Elmhurst Art Museum

150 Cottage Hill Avenue | Elmhurst, IL 60126
(630) 834-0202

Elmhurst Symphony Orchestra

149 W. Brush Hill Road | Elmhurst, IL 60126
(630) 941-0202

Enchanted Castle Restaurant & Entertainment Complex

1103 S. Main Street | Lombard, IL 60148
(630) 953-7860

Forest Preserve District of DuPage County

3S580 Naperville Road | Wheaton, IL 60189
(630) 933-7200

Itasca Waterpark

100 N. Catalpa | Itasca, IL 60143
(630) 773-1213 (630) 773-2257

K1 Speed

2381 W. Army Trail Road | Addison, IL 60101
(630) 433-3700

Laser Quest

1524-C Butterfield Road | Downers Grove, IL 60515
(630) 705-0500

Marcus Addison Cinema

1555 W. Lake Street | Addison, IL 60101
(630) 932-0864

Paradise Bay Water Park

437 E. St. Charles Road | Lombard, IL 60148
(630) 627-6127

Stardust Bowl of Addison

37 E. Lorraine Avenue | Addison, IL 60101
(630) 833-1040

Topgolf Wood Dale

1001 N. Prospect | Wood Dale, IL 60191
(630) 595-4653

Topgolf Naperville

3211 Odyssey Ct | Naperville, IL 60540
(630) 596-1000

WickedBall Chicago Bubble Soccer

332 Yorktown Shopping Center | Lombard, IL 60148
(844) 942-5332

Galloping Ghost Arcade

9415 Ogden Ave | Brookfield, IL 60513
(708) 485-4700

Naperville Riverwalk

178 W Jackson Ave | Naperville, IL 60540
(630) 305-5984

The Room Lisle

4910 Main St | Lisle, IL 60532
(808) 283-6129

Pirate's Cove Childrens Theme Park

901 Leicester Rd | Elk Grove Village, IL 60007
(847) 439-2683

Midwest French Markets

Downtown Wheaton | Wheaton, IL 60187
(312) 575-0286

Pixel Blast Arcade

1045 Burlington Ave | Ste 2 & 3 Lisle, IL 60532
(331) 777-2941

St James Farm Preserve

2S541 Winfield Rd | Warrenville, IL 60555
(630) 933-7248

Naperville Bites and Sites

200 E 5th Ave | Naperville, IL 60563
(630) 347-6553

ILLINOIS

DuPage County

Naperville Trolley & Tours

936 Lilac Ln | Naperville, IL 60540
(630) 355-2242

Lyman Woods

901 31st St | Downers Grove, IL 60515
(630) 963-9388

McCullum Park

6801 S Main | Downers Grove, IL 60516

Frank Lloyd Wright Home and Studio

951 Chicago Ave | Oak Park, IL 60302
(312) 994-4000

Ball Factory Indoor Play & Cafe

864 S Rte 59
Naperville, IL 60540
(630) 445-8365

Axeplosion Axethrowing Lounge

850 Dupage Ave | Unit 1
Lombard, IL 60148
(630) 519-4790

Bottle & Bottega Glen Ellyn

498 Crescent Blvd | Glen Ellyn, IL 60137
(630) 626-0986

Sea Lion Aquatic Park

1825 Short St | Lisle, IL 60532
(630) 964-3410

Knoch Knolls Park

336 Knoch Knolls Rd
Naperville, IL 60567
(630) 864-3964

Fullersburg Woods Nature Education Center

3609 Spring Rd | Oakbrook, IL 60523
(630) 850-8110

Willowbrook Wildlife Center

525 S Park Blvd | Glen Ellyn, IL 60137
(630) 942-6200

Maryknoll Park

845 Pershing Ave | Glen Ellyn, IL 60137
(630) 469-7888

Herrick Lake Forest Preserve

3S580 Naperville Rd | Wheaton, IL 60189
(630) 933-7200

Wheaton All-Night Flea Market

DuPage County Fairgrounds
Wheaton, IL 60187

Pump It Up of Lisle

4995 Varsity Dr | Ste A
Lisle, IL 60532

Cantigny Park

1S151 Winfield Rd | Wheaton, IL 60189
(630) 668-5161

Naperville Ribfest

440 Aurora Ave | Naperville, IL 60540

Sky Zone Trampoline Park

325 W Lake St | Ste A
Elmhurst, IL 60126
(630) 478-8339

Centennial Beach

500 W Jackson Ave | Naperville, IL 60540
(630) 848-5092

Legends Indoor Golf

2091 63rd St | Downers Grove, IL 60516
(630) 409-1220

Squirrel Cage Tavern

5528 Lincoln Ave | Lisle, IL 60532
(630) 968-9728

Wilder Park

175 Prospect Ave | Elmhurst, IL 60126
(630) 993-8900

Graue Mill & Museum

3824 York Rd | Oak Brook, IL 60523
(630) 655-2090

Funtopia - Naperville

2639 Aurora Ave | Ste 103
Naperville, IL 60540
(630) 718-4327

Lizzadro Museum of Lapidary Art

220 S Cottage Hill Ave | Elmhurst, IL 60126
(630) 833-1616

Reefwise

5401 Patton Dr | Ste 105
Lisle, IL 60532
(630) 853-5564



CUSTOM HEALTH INSURANCE STRATEGISTS

Tel: +1 (630) 550-5555

Fax: +1 (630) 261-1051

Email: info@lanzerottihealthcaresolutions.com

Web: www.lanzerottihealthcaresolutions.com

Health insurance for Individual, Families, and Business

Health Insurance for all sizes of businesses, sole entrepreneurs up to 200 employees in size.



Healthcare Plans Costing Too Much? Our Agency will help you eliminate high deductibles or reduce the high costs of healthcare premiums for your Organization, Short-term Transitional/COBRA or Personal Medical Plan



A piece of mind for your family

Health insurance provides relief during difficult times and protects your financial future from the rising cost of medical care.



We Represent All The Major Carriers, Including:



HUMANA

one



www.LanzerottiHealthcareSolutions.com

Expert Tree Service

We pride ourselves on providing quality residential and commercial tree services in Lisle IL and the surrounding areas.

Tree Trimming

Tree Stump Grinding

Tree Cutting

Hedge Trimming

Tree Maintenance

Snow Plowing

Tree Removal

Snow Removal

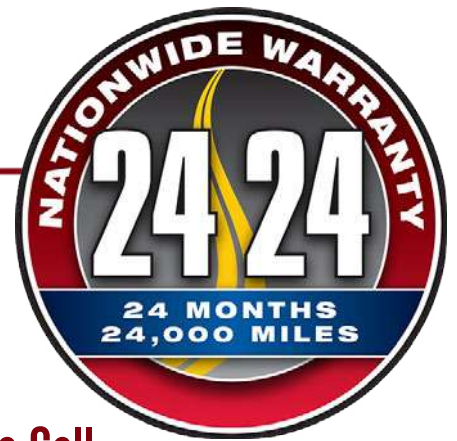
630-878-8362

expert-tree-service-tree-trimming.business.site



OPEN 24 Hours

Hi-Tech Addison AUTO REPAIR



(630) 543-8324

**Owner John's Cell
(630) 291-1472 24/7/365**

Top auto repair shop in Addison (DuPage County), IL for over 30 years. ASE Certified Master Technicians provide the comprehensive repair at a reasonable price with **THE BEST WARRANTY** in the business!

24 months/or 24,000 miles on parts & labor no mechanic is paid commission on your bill



5 STAR RATING ON YELP, GOOGLE, & FACEBOOK

A/C Cooling and Heating

Batteries, Lights

Brakes, ABS

Computer Systems

Emissions

Oil Changes

Suspension

Shocks and Struts

Tires, Repair and Balance

Transmission

Tune-ups

**Ask About Our
PRICE
GUARANTEE!**



**Emergency 24-Hour Towing
(630) 543-8990**

**hitechautomotiveinc@yahoo.com
hitechaddison.com**

**739 W. Fullerton Ave. • Addison, IL 60101
M-F 8am-6pm**

Brust Funeral Home

in Carol Stream

Brust Funeral Home has been a proud member of the Carol Stream business community since 1984. We are a third generation family owned and operated full service funeral home that has the compassion and caring when you need it the most. We offer all services to all faiths at lower cost than other funeral homes in the area.

Open 24 hours

(630) 510-0044



415 North Gary Avenue Carol Stream, IL 60188

PRO TIPS FOR LEVELING UP YOUR BATTLESTATION



(BPT) - Whether you're an avid or casual PC gamer, chances are you could improve your gameplay set-up. Most people develop their gaming station gradually, over time. The result? A hodgepodge of equipment and furniture that often falls short. The more you play, the more you may notice your set-up isn't ideal - and could be throwing you off your game.

Champion gamer and Evil Geniuses team member Tarik "Tarik" Celik offers his top tips for improving your gaming environment, and he should know: Tarik is a champion Counter-Strike player most recently winning ESL One: NY 2019.

His advice? Start with the basics, like comfort, and go from there to play your best.

1. Location

Where do you play? If your setup is far from your wireless router, or if walls and furniture stand in the way, you could have connectivity problems. You don't want internet speed or unreliability to disrupt your game play. If you can't change your location, the best solution is to create a hardwired connection as an easy fix. If you are forced to play wireless, try to reduce the distance and obstacles between your router.

2. Sit comfortably

If you've ever gotten up from gaming with a sore back or neck, your chair could be the culprit. Investing in a comfortable chair can prevent pain and help you focus.

- * Adjustable: This is crucial, especially if you have a desk that's not the ideal height. If you can also adjust the back's incline, this can keep you from hunching over while you game.
- * Cushioned: This goes without saying. A hard seat can hurt! The head rest should be cushioned too, helping to prevent you from slouching your head forward.
- * Lower back support: Long gaming sessions can mess you up, no matter how old you are. If you find yourself grabbing pillows to put behind you, get a chair with better lower back (lumbar) support.
- * Arm rests: Adjustable arm rests are ideal, since your height and arm length will differ from someone else's. Fully adjustable wrist-rests can also make a huge difference.

Since you may not know how comfortable a chair is until you've given it a fair trial, buy from a company with a generous return policy.

3. Choose the best PC

Whether you're new to gaming or upgrading, you'll want a gaming PC with the best processor to handle high-end games, plus a dedicated graphics card that will deliver a smoother frame rate and less lag. To avoid overheating, you'll also need a PC with a cooling system.

4. It's all about the visuals and settings

Upgrading to a top-of-the-line monitor takes your gaming experience to the next level. LG Electronics' new UltraGear 27GN950 monitor with 4K Nano IPS 1ms Display is recommended by Tarik of Evil Geniuses for gamers who want to play multiple titles (including multiplayer and single player games).

"When you compete at the top level, gear is very important. If you are not playing on the best gear possible, then you are going to be at a disadvantage," says Tarik. "Something really special about this LG monitor is that it is the world's first 4K resolution IPS gaming monitors with a 1ms response rate and it really does set it a head of the curve."

"Monitors are extremely important for being able to play at your best. Apart from your computer, the monitor is the main component for your gameplay and you want to



make sure that your visuals look good, your refresh rate is good and everything is smooth on your screen,” adds Tarik. “Another thing I like about this LG monitor is that it is virtually borderless. It makes it look really sleek and keeps the distractions away so you can focus on your game.”

LG UltraGear provides the most immersive and competitive PC gaming experience, so your flow is never interrupted.

5. Sound also matters

While gaming may be primarily visual, a high-quality headset brings sound to the next level. Beyond excellent sound quality, consider:

- * **Comfort:** Check ear cup size as well as how adjustable the headband is. People with smaller ears may find round on-ear cups more comfortable, while others may prefer larger over-ear oval ear cups.
- * **Microphone:** If you play with others, you need a quality microphone with adjustable volume.
- * **Dual-wireless audio system:** This allows you to listen to music or chat while playing.

- * **Noise cancelling:** To immerse yourself in the game, this blocks distracting sounds in your environment.

6. Bells and whistles

When choosing the best gear, details affect both comfort and appearance.

- * **RGB lighting for walls, keyboard or headset** can create a cool atmosphere for your space.
- * **Keyboard** - While full-sized keyboards may offer lots of great features, make sure you’ve got enough room for it. Most gaming professionals prefer a 10-keyless keyboard that’s easy to use and ergonomic.
- * **Gaming mouse options** are a matter of personal preference. Wired or wireless? How does it feel in your hand? Experiment to see which style helps you play your best. Check out all the possibilities for state-of-the-art gaming technology at LG.com.

LG Electronics’ new UltraGear 27GN950 monitor offers a 144Hz high-speed refresh rate, along with a 1ms response rate. What does that mean? You’ll enjoy smoother, clearer action without tearing, blurring or ghosting for

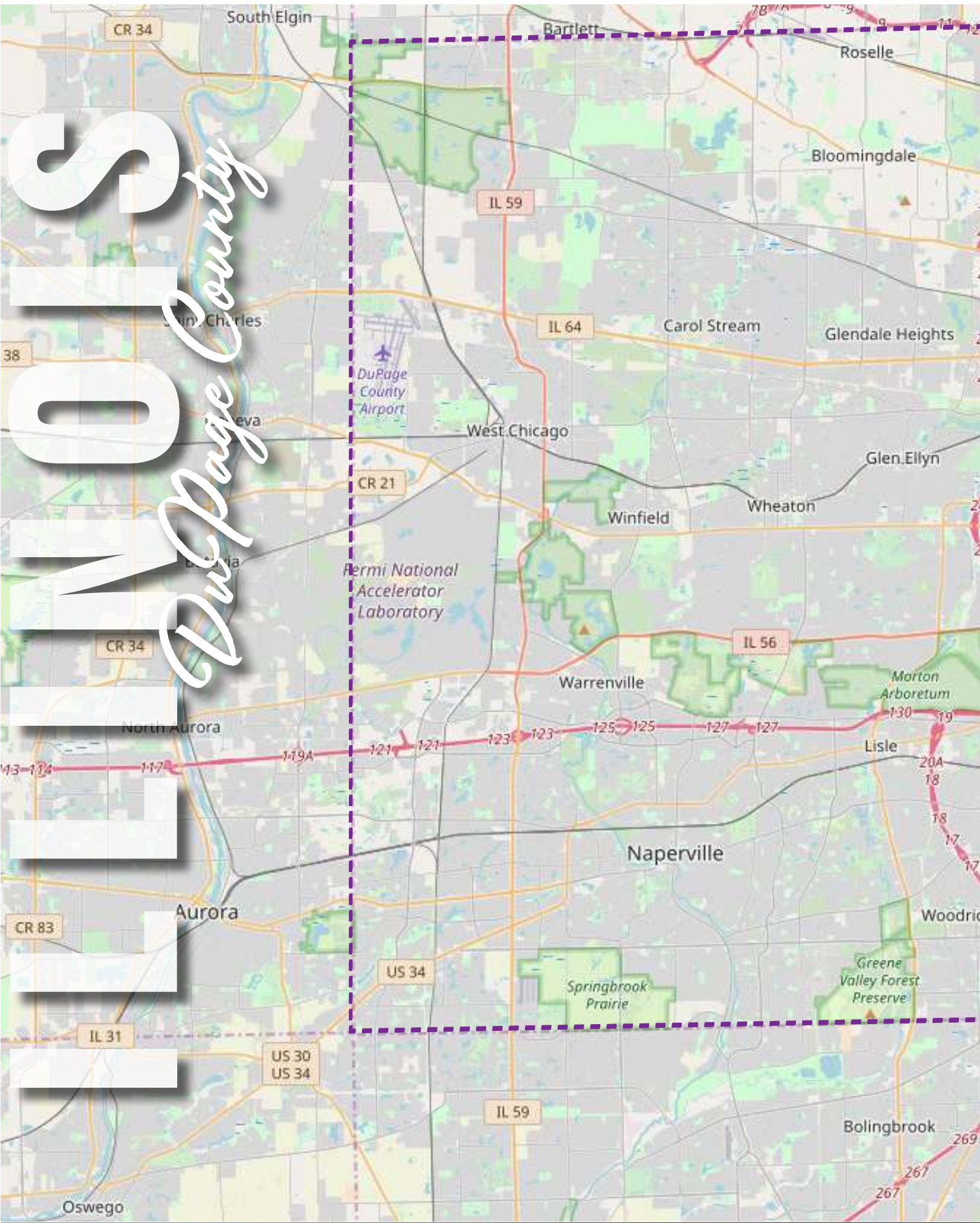
a seamless gaming experience. Plus its crisp, vivid colors and sharp details will let you fully immerse yourself in the game play, thanks to the 4K Nano IPS Display and VESA Display Stream Compression (DSC) Technology. Another bonus? You can raise, lower, tilt and pivot the monitor stand any way you want - in case you haven’t found the perfect chair yet.

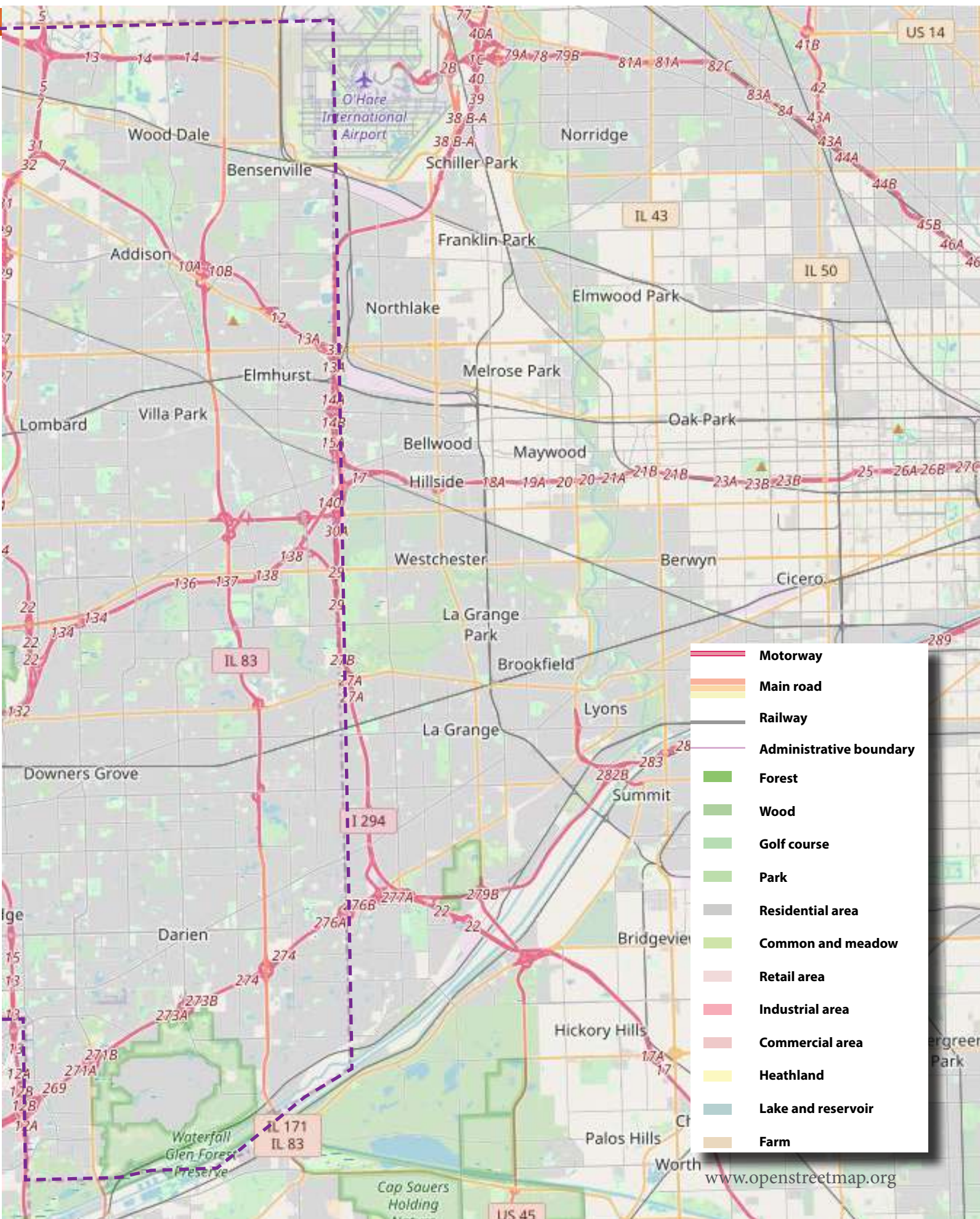
LG Electronics’ new UltraGear 27GN950Link monitor offers a 144Hz high-speed refresh rate, along with a 1ms response rate. What does that mean? You’ll enjoy smoother, clearer action without tearing, blur or ghosting for a seamless gaming experience. Plus its crisp, vivid colors and sharp details will let you fully immerse yourself in the game play, thanks to the 4K Nano IPS Display and VESA Display Stream Compression (DSC) Technology. Another bonus? You can raise, lower, tilt and pivot the monitor stand any way you want - in case you haven’t found the perfect chair yet.



WINDS

DuPage County





	Motorway
	Main road
	Railway
	Administrative boundary
	Forest
	Wood
	Golf course
	Park
	Residential area
	Common and meadow
	Retail area
	Industrial area
	Commercial area
	Heathland
	Lake and reservoir
	Farm

www.openstreetmap.org

DIRECTORY

Animal Control

120 N County Farm Rd,
Wheaton IL
630-407-2800

Audit Hotline - 630-75AUDIT
to report fraud, waste, or abuse
630-752-8348

Auditor

630-407-6075

Board of Election

Commissioners
630-407-5600

Board of Review

630-407-5888

Building Permits

630-407-6700

Circuit Court Clerk

505 N County Farm Rd,
Wheaton IL

Community Services

630-407-6500

DuPage Care Center

400 N County Farm Rd,
Wheaton IL
630-665-6400

Coroner

414 N County Farm Rd,
Wheaton IL
630-407-2600

County Board Chairman

630-407-6006

County Board Offices

630-407-6023

County Clerk

630-407-5500

Economic Development

630-407-6670

Facilities Management

630-407-5700

Family Center

630-407-2450

Forest Preserve District

3S580 Naperville Rd,
Wheaton IL
630-933-7200

Health Department

111 N County Farm Rd,
Wheaton IL
630-682-7400

Human Resources

630-407-6300

Information Technology

630-407-5000

Public Works

Administration
630-407-6800

Public Defender

505 N County Farm Rd,
Wheaton IL
630-407-8300

Recorder

630-407-5400

Sheriff's Dept

501 N County Farm Rd,
Wheaton IL

Sheriff Emergency

TDD & VOICE: 9-1-1

Sheriff Non-Emergency

630-682-7256

Sheriff TDD Non-Emergency

TDD ONLY: 630-682-7564

Crime Stoppers

630-407-2337

Jail Division

630-407-2258

State's Attorney

505 N County Farm Rd,
Wheaton IL
630-407-8000

Stormwater Department

630-407-6700

Supervisor of Assessments

630-407-5858

Treasurer-Collector

630-407-5900

Veterans Assistance

Commission
630-407-5655

Waste, Recycling & Green

Initiatives
630-407-6700

Workforce Development

2525 Cabot Drive Suite 302
Lisle, IL
630-955-2030

Zoning Board of Appeals

630-407-6700

Zoning Enforcement

630-407-6700

Heartland Marketing Inc.



PH: 309.349.3282
FAX: 309.349.3484

COMMUNITY GUIDES

FLYERS

COASTERS

MENUS



BANNERS

VINYL

PROMOTIONAL ITEMS



MARKETING FROM THE

Heart!

www.heartlandmarketinginc.com



1310 El Camino Drive | Pekin, IL 61554



YOUNGREN'S, INC.

**HEATING
& COOLING**

Since 1932

License #21-00000796

(630) 897-5248



HEATING | AIR CONDITIONING
AIR QUALITY

WE SELL THE BEST...AND SERVICE THE REST
CALL YOUNGREN'S TODAY!

youngrensinc.com

See Our Website For Money Saving Offers!



736 New Haven Ave Aurora, IL 60506

*10% discount on RESIDENTIAL SERVICE Work for Seniors, Military and Law Enforcement.