



# IDAHO

**MARY KAY**  
see it! love it!  
get it!  
call me today!  
**Megan Rush**  
Independent Beauty Consultant  
marykay.com/mrush25  
(208) 921-8248

## 2022/2023 COMMUNITY GUIDE

# Elmore

---

## COUNTIES

**TAXI SERVICE**



**CALL NOW**  
**208 407 9744**

**HOURS:**

**Mon-Thu**

8:00am - 12:00am

**Sun**

8:00am - 10:00pm

**Fri-Sat**

8:00am - 3:00am





# WELCOME TO Elmore County IDAHO

## CONTENTS

### A Closer Look:

- 5-6** Elmore County At A Glance
- 9-10** 7 Types of Hardscaping
- 13-14** USAF 366th Fighter Wing
- 12** Places To Visit/Things To Do
- 17-18** Leave No Trace Principles of Hiking
- 21** Directory



Ad Designer - Toni Ritchie  
Book Designer - Toni Ritchie  
Art Director - Kara Cutting | Published by HMI  
All rights reserved (c) 2022 Heartland Marketing Inc.  
1310 El Camino Drive | Pekin, IL 61554  
Phone: 309.349.3282 | Fax: 309.349.3484  
[www.heartlandmarketinginc.com](http://www.heartlandmarketinginc.com)



# Stoecker Jewelers



*Gifts of Love for the Whole Family*

**Bridal Sets . Citizen Watches . Colored Jewelry**

**Idaho Gemstones . Diamonds**

**Custom Jewelry Repair & Designing**

**Financing Now Available**



**150 N 2nd East, Mountain Home 208.587.5372**

**STOECKERJEWELERS.COM**

FIND US ON FACEBOOK







510 Airbase Rd. - Mountain Home, ID 83647



Playsets • Metal Buildings • Stoves

Wooden Sheds • Trampolines

Penske Truck Rental

(208) 580-9386

[www.idahooutdoorsolutions.com](http://www.idahooutdoorsolutions.com)



# JOAN BARAK INTERIOR DESIGN LLC

*Interior Designer In Commercial & Residential*

- Certified Color Expert
- Cabinet Design
- Space Planning
- Window Treatments
- Certified Home Stager

208.794.6453

[joanbarakinteriordesignllc.com](http://joanbarakinteriordesignllc.com)







# *At a glance* **Elmore** *County* IDAHO

## ELMORE COUNTY 28,992

<b>Mountain Home AFB</b>	<b>13,780</b>
Glenns Ferry	1,241
Mountain Home	3,238
Grand View	444
Atlanta	323

[www.city-data.com/city/Idaho.html](http://www.city-data.com/city/Idaho.html)  
[worldpopulationreview.com/us-counties/id](http://worldpopulationreview.com/us-counties/id)

Elmore County is a county located in the U.S. state of Idaho. As of the 2020 census, the population was 26,823. The largest city and county seat is Mountain Home. Elmore County comprises the Mountain Home, ID Micropolitan Statistical Area, which is also included in the Boise-Mountain Home-Ontario, ID-OR Combined Statistical Area.

### Economy

Median household income in Elmore County, ID is \$45,656. In 2020, the tract with the highest Median Household Income in Elmore County, ID was Census Tract 9605 with a value of \$49,052, followed by Census Tract 9603 and Census Tract 9601, with respective values of \$42,303 and \$34,318.

### Health

85.7% of the population of Elmore County, ID has health coverage, with 20.7% on employee plans, 13.2% on Medicaid,



# ELMORE COUNTY, ID

2020 POPULATION

27,043

1.12% 1-YEAR GROWTH

US SENATOR



Mike  
Crapo

REPUBLICAN PARTY

US SENATOR



Jim  
Risch

REPUBLICAN PARTY

2020 MEDIAN AGE

31.8

1.55% 1-YEAR DECREASE

2020 POVERTY RATE

14.3%

6.55% 1-YEAR DECREASE

2020 MEDIAN HOUSEHOLD INCOME

\$45,656

2.56% 1-YEAR DECLINE

2020 MEDIAN HOUSEHOLD VALUE

\$164,400

6.89% 1-YEAR GROWTH

2020 EMPLOYED POPULATION

9,612

0.765% 1-YEAR GROWTH

7.37% on Medicare, 24% on non-group plans, and 20.4% on military or VA plans.

Primary care physicians in Elmore County, ID see 1514 patients per year on average, which represents a 1.61% increase from the previous year (1490 patients). Compare this to dentists who see 1250 patients per year, and mental health providers who see 640 patients per year.

## Housing & Living

The median property value in Elmore County, ID was \$164,400 in 2020, which is 0.715 times smaller than the national average of \$229,800. Between 2019 and 2020 the median property value increased from \$153,800 to \$164,400, a 6.89% increase. The homeownership rate in Elmore County, ID is 61%, which is lower than the national average of 64.4%. People in Elmore County, ID have an average commute time of 20.6 minutes,

and they drove alone to work. Car ownership in Elmore County, ID is approximately the same as the national average, with an average of 2 cars per household.

## Civics

In the 2020 presidential election, the popular vote in Elmore County, ID went to Donald J. Trump with 71% of the vote. The runner-up was Joseph R Biden Jr. (25.5%), followed by Jo Jorgensen (2.2%). The most partisan county was Bear Lake County, ID with 87.9% of the vote going to Donald J. Trump running for the Republican Party.

Mike Crapo and Jim Risch are the senators currently representing the state of Idaho. In the United States, senators are elected to 6-year terms with the terms for individual senators staggered.

<https://datausa.io/profile/geo/elmore-county-id>



# TREASURE VALLEY STEAMWAY - CARPET CLEANERS, WATER REMOVAL

EST. 1996

## The Reliable Carpet Cleaner You Are Looking For in Mountain Home, ID

### Services

- Carpet Cleaning
- Upholstery Cleaning & Restoration
- Flood Restoration



**FREE  
ESTIMATES**

**(208) 587-6046**

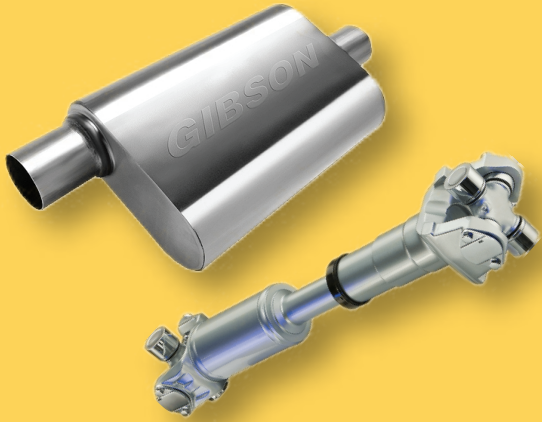
[www.treasurevalleysteamway.com](http://www.treasurevalleysteamway.com)





# Discount Muffler

| CONVERTERS | MUFFLERS | EXHAUST TIPS | GLASSPACKS |  
| DRIVELINES | PERFORMANCE EXHAUST |



**(208) 870-4422**



5225 Airbase Rd Mountain Home, ID 83647 • In-House Specialty Services

## PATRIOT STORAGE

Storage units available:

6x10 | 10x10 | 10x15 | 10x25

U-Haul Truck Rental Available!



- RV/Boat Storage available
- Uhaul rentals
- 24 hour video surveillance

**(208) 591-5642**





# Seven Types of Hardscaping

Hardscaping is an aspect of landscaping that provides structure and functionality to outdoor areas.



Hardscaping refers to any man made structure within landscaping design that is made of inanimate materials like gravel, brick, wood, pavers, or stone. Any solid structure in an outdoor area that is not plant life is considered hardscape. Some examples of hardscape features include driveways, patios, fountains, fire pits, and walkways. Conversely, softscaping is the form of landscape design that primarily

deals with organic, living material such as trees, shrubs, and flower beds.

The Differences Between Hardscaping and Landscaping Hardscaping refers to the structures within landscaping that are made out of non-living materials. Every landscape design is made up of a series of hardscaping features—including walkways, gravel paths, fountains, and structural accents—and softscaping

features—which are any plants like flowers or trees—that complement and support each other. Hardscaping is inanimate

## Hardscaping Can Increase the Value of Your Home

and often provides the structure for softscaping, which grows and evolves. There is a wide selection of products and



materials that can be used to craft a hardscaping design for your outdoor space. Here is an overview of seven types of hardscape features.

**1. Fire pits:** A built-in outdoor fireplace or fire pit made of brick or stone is functional hardscaping that can make your outdoor space more liveable and relaxing.

**2. Stone pathways:** Stone pathways are typically made out of materials like natural stone

or concrete pavers. They can provide you with access to the different parts of your garden that helps you avoid trampling any of your dirt or getting your feet dirty.

**3. Retaining walls:** Retaining walls are load-bearing walls that draw the boundary of a garden at the top of a hill, or the bottom of a hill, effectively damming up dirt and water runoff that would otherwise interfere with growing softscape.



**4. Gazebos and pergolas:** Freestanding structures in your outdoor living space like gazebos and pergolas—which are partially-shaded walkways

are forms of hardscaping that come in a variety of shapes, sizes, materials, and themes. They provide shade and shelter during outdoor gatherings and make your outdoor space more liveable.

**5. Decks and patios:** Structures like wooden decks and patios are another form of hardscaping that can extend living space into an outdoor area. You can use



materials like brick or concrete depending on cost and maintenance requirements.

**6. Fountains:** Water features like fountains or paved garden streams can provide your backyard with a natural focal point and a peaceful ambience.

**7. Driveways:** Driveways provide you with a car path

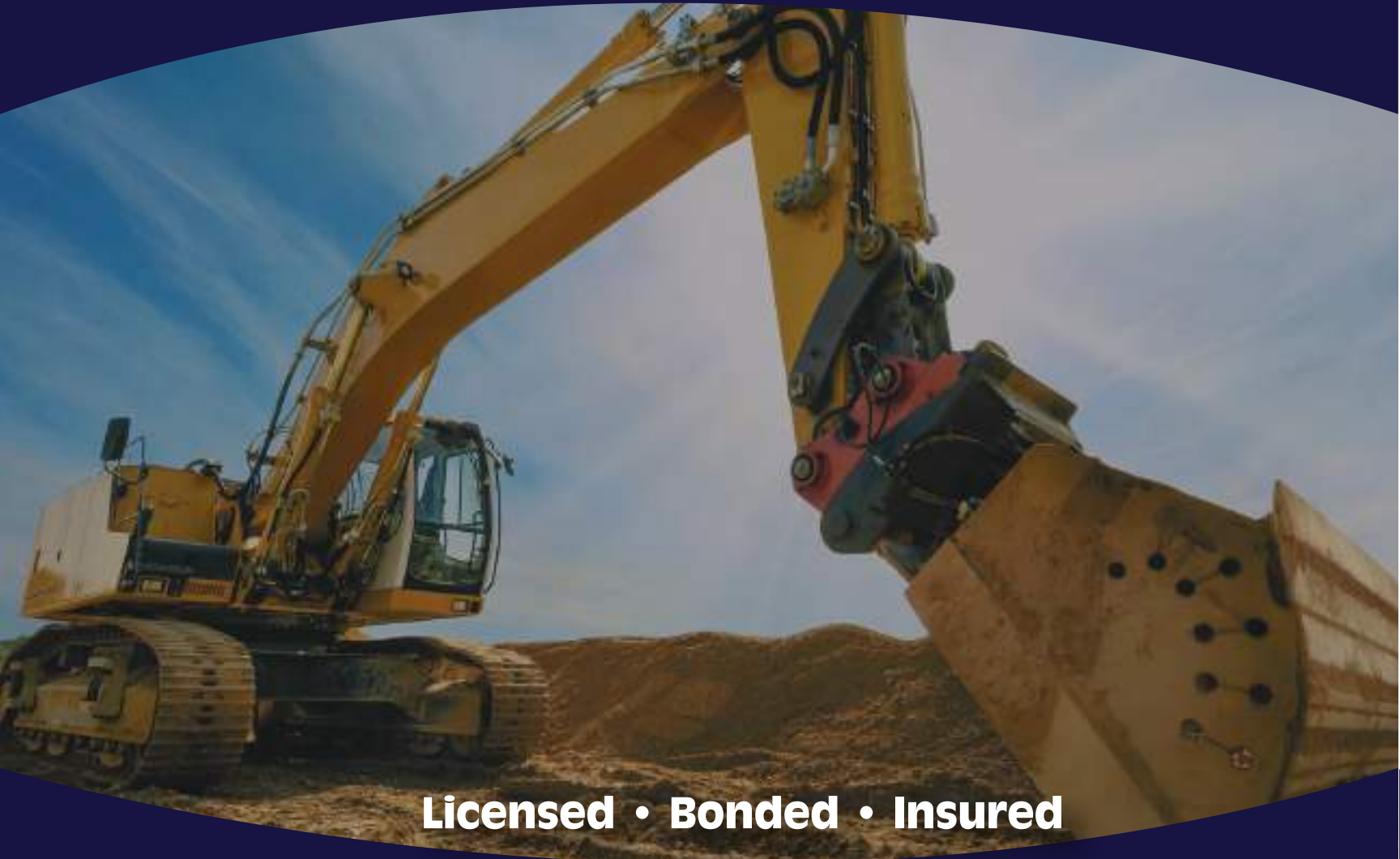
into your property. They can be made from poured concrete, brick, stone, asphalt, or any other sturdy, weather and load-bearing material. A house will often come with a built-in driveway, but some homeowners choose to hardscape new driveways if they decide to expand or renovate after excessive w types of hardscape features.





Offering Quality Service at Competitive Prices

**(208) 941-6643**



**Licensed • Bonded • Insured**

#### Septic System & Related Services

- Septic Systems- Cleaned, Pumped & Repaired
- Septic Installation & Design
- Drain Fields
- Gray Water Systems
- Grease Traps
- Sand Traps

**[www.dodgeboysid.com](http://www.dodgeboysid.com)**

2708 Canyon Creek Road - Mountain Home, ID 83647

#### Excavation Services

- Grading
- Site Work
- Land Leveling
- Utilities
- Hauling







# All J's Septic Services, LLC

[AllJsSeptic@gmail.com](mailto:AllJsSeptic@gmail.com)

# 208-941-6643

Office: 208-590-4431

2708 Canyon Creek Road  
Mtn. Home, ID 83647



# Places to visit *and things to do*

## **BRUNEAU DUNES STATE PARK**

27608 Bruneau Sand Dunes Rd  
Bruneau, ID  
208-366-7919

## **C. J. STRIKE RESERVOIR**

Its main recreational features include the C. J. Strike Dam and its 7,500-acre reservoir, an impoundment of the Snake River and Bruneau River

## **MAIN OREGON TRAIL BACK COUNTRY BYWAY**

Old Oregon Trail Rd  
Glenns Ferry, ID

## **DESERT CANYON GOLF COURSE**

1880 E 8th N  
Mountain Home, ID  
208-587-3293

## **MOUNTAIN HOME MUSEUM**

180 S 3rd E St  
Mountain Home, ID  
208-587-684

## **PRINCE ALBERT HOT SPRINGS**

Located in the Bennett Mountain Hills – a mountain range that runs west to east. Prince Albert Hot Spring offers a hard to reach soaking spot with incredible views of the Snake River Valley.

## **RICHARD AGUIRRE PARK**

McKenna Drive  
Mountain Home, ID  
208-587-2112

## **BOISE NATIONAL FOREST**

The Boise National Forest's vast landscape spans over 2.5 million acres of diverse forest and grassland. Located northeast of Idaho's capital city of Boise, recreationists can explore the North Fork Payette River Canyon at 2,800 feet in elevation to the nearly 10,000 foot peak of Trinity Mountain.

## **CARL MILLER PARK**

East 3rd Street  
Mountain Home, ID  
208-587-2112



# IDAHO

## Elmore County

### CRATER RINGS

Crater rings is one of the most unique and under visited natural features in the state of Idaho. Located 45 minutes outside of Boise near the town of Mountain Home, this geological oddity makes for the perfect adventure destination.

### ANDERSON RANCH RESERVOIR

Situated north of Mountain Home and is well known for fishing, water skiing, hiking, and boating. The reservoir features ten campgrounds, a trailhead, and four large boat launches.

### THREE ISLAND CROSSING STATE PARK

1083 S Three Island Park Dr,  
Glenns Ferry, ID  
208-366-2394

### DEADMAN FALLS

Deadman Falls, located on the Hanover College campus, is one of many wet weather falls in the area. Deadman Falls is one of the larger in terms of volume, and even then it will only have an appreciable amount of water after a decent rain.

### CROSSING WINERY

1853 Wrightstown Rd  
Newtown, PA  
215-493-6500

### Y KNOT WINERY

1289 W Madison Ave  
Glenns Ferry, ID  
208-366-2313

### CROSSING WINERY GOLF COURSE

1289 W Madison Ave,  
Glenns Ferry, ID  
208-366-2313

### FUDGE FACTORY GRILL & ICE CREAM

160 S Commercial St  
Glenns Ferry, ID  
208-366-7687

### STONE'S RESTAURANT

220 N Main St  
Mountain Home, ID  
208-587-8384

### MOUNTAIN HOME AIR FORCE BASE

366 Gunfighter Ave  
Mountain Home AFB  
208-828-2111





image via [www.dvidshub.net/image/7238685/raging-gunfighter-22-2](https://www.dvidshub.net/image/7238685/raging-gunfighter-22-2)



**U.S. AIR FORCE**

**TO FLY, FIGHT, AND WIN...  
AIRPOWER ANYTIME, ANYWHERE**

**JOIN THE AIR FORCE TODAY**

## 366th Fighter Wing

HOME OF THE F-15E STRIKE EAGLE

Mountain Home Air Force Base is located 12 miles southwest of Mountain Home, Idaho. It is an operational air base in Elmore County, Idaho. Mountain Home AFB is known across the United States Air Force as the home of the 366th Fighter Wing, better known as the Gunfighters. The remote base is tasked with providing combat air power and combat support to all United States forces across the globe.

The wing population consists of more than 4,800 military and civilian members and about 5,200 family members. Approximately 15 F-15SG Strike Eagles belong to the Republic of Singapore's 428th Fighter Squadron, which



operates here as a mission partner under the Peace Carvin V program.

### 366TH FIGHTER WING

Mountain Home AFB and the 366th Wing have a rich history that stretches back more than 50 years to the United States' entry into World War II. Although the wing itself was not activated until after World War II, it shares the World War II heritage of the 366th Operations Group, whose precursor organization, the 366th Fighter Group, stood up about the same time the base was being built. In early 1991, the Air Force announced that the 366th would become the Air Force's premier "air intervention" composite wing.

Over the next decade the wing operated with fighters, bombers and tankers. After the 9/11 terrorist attacks, the consolidation of the Air Force's KC-135 and B-1 force led to the reallocation of the wing's bombers and tankers to McConnell AFB, Kansas, and Ellsworth AFB, S.D. The wing was also home to F-16CJ Fighter Falcon aircraft from 1991 to March 2007. The F-16CJs left the base in another effort to consolidate from multiple airframes to one at Air Force installations across the country.

### AIR COMBAT COMMAND

In World War II as the United States and its allies gained air superiority in the skies over Europe, the multifaceted role of tactical air power proved pivotal. Allied pilots provided close air support for ground troops, prevented enemy reinforcements from reaching the front lines through battlefield interdiction, attacked lines of communication and supply targets, gathered vital intelligence through reconnaissance and surveillance, and airlifted entire airborne divisions behind enemy lines.

The War Department recognized tactical air as



one of the three pillars of modern air power when it established the Tactical Air Command (TAC) on 21 March 1946, along with the Strategic Air Command (SAC) and the Air Defense Command. Tactical Air Command complimented Strategic Air Command's strategic approach of delivering an all-out nuclear punch with the tactical role of fighting limited wars with conventional arms. TAC Headquarters was initially activated at Tampa, Florida on 21 March 1946 but was moved to Langley Field, Virginia on 21 May. This move was directed by Headquarters Army Air Forces in order to locate the headquarters closer to the Headquarters Army Ground Forces at Fort Monroe and the Navy's Atlantic Fleet Headquarters in Norfolk.

### F-15 E STRIKE EAGLE & WEAPON SYSTEMS

The F-15E Strike Eagle is a dual-role fighter designed to perform air-to-air and air-to-ground missions. An array of avionics and electronics systems gives the F-15E the capability to fight at low altitude, day or night and in all weather.

The wing's transformation video that talks about the changes the base has made and how it will help maintain and accelerate the World's Greatest Air Force - scan the code below to watch.



<https://www.mountainhome.af.mil/About-MHAFB/>



# JOAN BARAK INTERIOR DESIGN LLC

*Interior Designer In Commercial & Residential*

- Certified Color Expert
- Cabinet Design
- Space Planning
- Window Treatments
- Certified Home Stager

208.794.6453

*joanbarakinteriordesignllc.com*





Refreshing as the Great Outdoors!



# Septic Tank Pumping & Portable Potties

*[www.artesianclean.com](http://www.artesianclean.com)*

**Event Units • Construction Units • Trailer Units • ADA Compliant Units**  
**Septic Pumping Service**



# Learn the Hiker's *Leave No Trace Principles*

Leave No Trace is an incredibly important set of principles for anyone who wants to enjoy the outdoors. The principles are intended to reduce human impact on the outdoors.

Leave No Trace helps keep our public lands beautiful and explorable for generations to come.

Every single beginner hiker should learn the Leave No Trace principles. It is your responsibility as a hiker to follow these rules

and teach them to others.

Some of these have already been covered throughout this guide, like respecting wildlife and planning ahead.

Plan ahead and prepare. Know the area and the regulations before you hike. Follow the rules of the park. Avoid hiking during inclement weather that may require search and rescue efforts. Visit in small groups and avoid hiking during crowded times. The easiest way to follow this principle

is research your hike beforehand and start your hikes first thing in the morning.

Travel and camp on durable surfaces. Always stay on established trails. Don't hike off-trail to get a cool photo or scenic view. If you're camping, find a place that has been previously camped on.

Dispose of waste properly. Pack out what you pack in. Take all trash with you, including food waste like orange peels and

seeds. These foods are not native to the area and harm animals. When you gotta go, bury all poop in a small 6-8 inch hole (not necessary for pee). It's also essential to pack out all toilet paper and any feminine hygiene products.

Leave what you find. Don't take anything home with you. This includes sea glass, rocks, and wildflowers. Leave nature in nature.

Reduce campfire impacts. If the recent wildfires have taught us anything, it's that fires can start quickly and cause massive devastation. Avoid starting fires during the dry season and if you do, only start a fire in an established fire pit or ring. A safer





alternative is using a propane-based cooking stove instead. Buy firewood locally to avoid introducing pests and diseases into the environment.

Respect wildlife. Keep your distance from animals when hiking. Store your food properly, especially when in bear country, to keep animals out. It's also important to keep your pets under control and on leash when on trails with active wildlife. Be considerate of other visitors. Hiking is supposed to be a relaxing hobby. Follow trail etiquette and be kind to other hikers. Don't play music and keep your dog away from others (unless of course they ask to play!).

## HIKING WITH YOUR DOG(S)

**1.** Make sure that dogs are allowed on the land where you will be hiking and obey any restrictions concerning areas that are off limits.

**2.** Keep your dog on a leash. This one important guideline helps to ensure that other hikers will feel comfortable when they meet you on the trail. It also prevents your dog from chasing wildlife and reduces the habitat damage that occurs when dogs run off the trail. Dogs can leave behind a predator scent that disrupts wildlife and may hinder nesting and feeding activities.

**5.** Don't assume that every hiker you meet on the trail will like your dog. Be sure to keep your dog well controlled so that other hikers don't feel frightened or threatened. Also, don't assume that other dogs you might meet on the trail are friendly, even if they are wagging their tails.

**6.** When traveling to the trailhead, remember never to leave your dog in a closed vehicle. Oven-like temperatures can build up in minutes, even on cool days.

Keeping your dog on a leash also helps to ensure his safety, since the leash keeps him under control and by your side. Unleashed dogs can quickly run off when tracking a scent and may disappear from your view very quickly. Always use a leash so that you and your dog will finish your hike together safely and can hike again at another time.

**3.** Plan for your dog's needs on the trail as well as your own. Be sure to pack food, water, and accessories that will keep your dog energized, hydrated, and comfortable. Check out our gear list for hiking with

dogs. And remember to pre-treat your dog with heartworm preventative medication as well as insecticides to prevent flea and tick infestation.

**4.** Practice Leave No Trace ethics and clean up your dog's waste. Either carry along a small spade and bury the waste or pack it out with you in plastic bags. Dog waste contains fecal coliform bacteria, which can cause disease and pollution. Dogs can also carry salmonella and giardia.





# DIRECTORY

## ELMORE COUNTY COURTHOUSE

150 S 4th E St  
Mountain Home, ID  
208-587-2130

Accounts Payable Suite 3  
Extension 1200

Assessor Suite 2  
Extension 507

Auditor Suite 3  
Extension 500

Commissioners Suite 3  
Extension 505

District Court Suite 5  
Extension 508

Drug Court  
125 So. 5th E  
Extension 1283

Elections Suite 3  
Extension 1206

Jury Clerk Suite 5  
Extension 1285

Maintenance Suite 3  
Extension 1266

Probation / Misdemeanor  
Suite 5 Extension 1264

Recorder Suite 3  
Extension 500

Security Suite 5  
Extension 1234

Social Services Suite 3  
Extension 1243

Treasurer Suite 4  
Extension 501

## GROWTH AND DEVELOPMENT

520 E. 2nd So.  
208-587-2129

Land Use & Building Dept  
Extension 502

Building Department  
Extension 510

Code Enforcement  
Extension 1255

## HUMAN RESOURCES

155 So. 5th E  
208-587-2129 Extension 1202

## JUVENILE PROBATION

195 So. 5th E  
208-587-2129 Extension 506

## MOTOR VEHICLES (DMV)

430 E. 2nd So.  
208-587-2129 Extension 504

## PROSECUTING ATTORNEY

190 So. 4th E.  
208-587-2129 Extension 503

## SHERIFF'S OFFICE

2255 E. 8th No.  
208-587-3370

Civil Department  
Extension 235

Records Department  
Extension 233

Warrants Department  
Extension 231

Dispatch  
208-587-2100

County Jail  
208-587-9103

Detectives  
208-587-1888 Option 3

## DRIVERS LICENSE

125 So. 5th E  
208-587-1888 Option 2

## U OF I EXTENSION OFFICE

535 E. Jackson  
208-587-2129 Extension 509

Fair Office  
Extension 1287

Pest Abatement  
208-587-2304

Noxious Weed  
208-587-2136 Extension 509

4-H Office  
Extension 1251





Idaho Outdoor Solutions is committed to providing custom outdoor fun and storage needs for any size family or business. Our goal is to provide a product customized to meet each customer's unique needs. Our philosophy is for customers to leave us happy with their purchase, not broke because of needless up-sales.

- Playsets
- Carports & Garages
- Pellet, Wood, Multi-fuel Stoves & Parts
- Wooden Sheds
- Trampolines
- Penske Truck Rental

**(208) 580-9386**

510 Airbase Rd. - Mountain Home, ID 83647

[www.idahooutdoorsolutions.com](http://www.idahooutdoorsolutions.com)







#### Septic System & Related Services

- Septic Systems- Cleaned, Pumped & Repaired
- Septic Installation & Design
- Drain Fields
- Gray Water Systems
- Grease Traps
- Sand Traps

#### Excavation Services

- Grading
- Site Work
- Land Leveling
- Utilities
- Hauling

**Licensed • Bonded • Insured**

**Offering Quality Service at Competitive Prices**

**(208) 941-6643**

[www.dodgeboysid.com](http://www.dodgeboysid.com)



## All J's Septic Services, LLC



2708 Canyon Creek Road  
Mtn. Home, ID 83647

[AllJsSeptic@gmail.com](mailto:AllJsSeptic@gmail.com)

**208-941-6643**