



OHIO

(740) 998-4304

Buckeye
Metal Sales

buckeyemetalroofing.com



740-663-5005

800-563-2379

2022/2023 COMMUNITY GUIDE

ROSS COUNTY



(740) 634-3231

115 East Main Street Bainbridge, Ohio 45612

24-Hour Emergency Service

Delivery Service

Durable Medical Equipment

Multi-Dose Compliance Packaging

Photo Kiosk

CBD oil

Elderberry Oil

UPS Drop off

Gift Shop

Medication Synchronization

FlavorRX medication Flavoring for liquids

POS testing (Influenza, Stept, A1c, Lipids)

Long Term injectables (Vitamin B12, Depo-Provera)

Narcan Counseling and Dispensing

Vaccinations

(Influenza, Pneumonia, Shingles, Hepatitis A & B, Tdap, Tetanus)



WELCOME TO Ross County OHIO

CONTENTS

5-6

Ross County At A Glance

A Closer Look:

9-10

Places To Visit/Things To Do

15-16

Ross County

21

Directory



Ad Designer - TJ Williams
Book Designer - Toni Ritchie
Art Director - Kara Cutting | Published by HMI
All rights reserved (c) 2022 Heartland Marketing Inc.
1310 El Camino Drive | Pekin, IL 61554
Phone: 309.349.3282 | Fax: 309.349.3484
www.heartlandmarketinginc.com



WARE

FUNERAL HOME



121 West Second
Street Chillicothe,
OH 45601

- **FUNERAL SERVICE**
- **MEMORIAL SERVICE**
- **BURIAL**
- **CREMATION**

wares@horizonview.net

www.warefh.com

Tel: 1-740-773-2134

Fax: 1-740-773-2135



6 Ford St | Kingston, OH 45644

Kingston Mower



***Lawn Mower Sharpening
& Lawn Mower Repair***

(740) 642-2200

kingstonmower@horizonview.net

***Kingston Mower is a lawn mower repair specialist
that provides small engine repair as well as other services.***





At a glance **ROSS** *County* OHIO

ROSS COUNTY 76,899

Chillicothe	21,738
Greenfield	4,575
Bainbridge	3,267
Frankfort	1,062
Kingston	1,023
Andersonville	779
Clarksburg	458
Richmond Dale	377

www.city-data.com/city/Ohio.html
worldpopulationreview.com/us-counties/oh

Ross Co., NE is a county in the Appalachian region of the U.S. state of Ohio. As of the 2019 United States Census, the population was 76,666. Its county seat is Chillicothe, the first and third capital of Ohio. Established on August 20, 1798, the county is named for Federalist Senator James Ross of Pennsylvania.

Education

In 2020, universities in Ross County, OH awarded 364 degrees. The student population of Ross County, OH is skewed towards women, with 880 male students and 1,629 female students.

Most students graduating from Universities in Ross County, OH are White (337 and 92.6%), followed by Black or African American (10 and 2.75%), Two or More Races (6 and 1.65%), and Unknown (6 and 1.65%).

ROSS COUNTY, OH

2020 POPULATION

76,816

0.172% 1-YEAR DECLINE

US SENATOR

 **Sherrod Brown**
REPUBLICAN PARTY

US SENATOR

 **Rob Portman**
REPUBLICAN PARTY

2020 MEDIAN AGE

41.2

0.488% 1-YEAR INCREASE

2020 POVERTY RATE

16.3%

5.92% 1-YEAR DECREASE

2020 MEDIAN HOUSEHOLD INCOME

\$51,508

0.814% 1-YEAR GROWTH

2020 MEDIAN HOUSEHOLD VALUE

\$125,000

0.969% 1-YEAR GROWTH

2020 EMPLOYED POPULATION

30,904

0.502% 1-YEAR GROWTH

Health

93.8% of the population of Ross County, OH has health coverage, with 45.9% on employee plans, 21% on Medicaid, 13.6% on Medicare, 11.7% on non-group plans, and 1.59% on military or VA plans.

Primary care physicians in Ross County, OH see 1637 patients per year on average, which represents a 6.83% decrease from the previous year (1757 patients). Compare this to dentists who see 1597 patients per year, and mental health providers who see 224 patients per year.

Housing & Living

The median property value in Ross County, OH was \$125,000 in 2020, which is 0.544 times smaller than the national average of \$229,800. Between 2019 and 2020 the median property

value increased from \$123,800 to \$125,000, a 0.969% increase. The homeownership rate in Ross County, OH is 71.1%, which is higher than the national average of 64.4%. People in Ross County, OH have an average commute time of 27.1 minutes, and they drove alone to work. Car ownership in Ross County, OH is approximately the same as the national average, with an average of 2 cars per household.

Economy

Median household income in Ross County, OH is \$51,508. In 2020, the tract with the highest Median Household Income in Ross County, OH was Census Tract 9559 with a value of \$68,091, followed by Census Tract 9566 and Census Tract 9556.03, with respective values of \$65,579 and \$61,949.

<https://datausa.io/profile/geo/ross-county-oh>

Do it Best



CENTRAL CENTER HARDWARE

653 Central Center, Chillicothe, OH 45601



cch.doitbest.com



740-773-7272



Mon.-Sat. 8am-6pm
Sunday 10am-5pm

STIHL®
AUTHORIZED DEALER



Automotive
Building Material
Cleaning Supplies
Door & Windows
Electrical
Farm & Ranch
Hand Tools
Hardware
Heating & AC
Housewares
Lawn & Garden
Outdoor Living
Paint & Painting Supplies
Plumbing Supplies
Power Tools & Accessories
Storage & Organization



Places to visit

and things to do

Adena Mansion and Gardens
847 Adena Rd
Chillicothe, OH 45601

Chillicothe Mall
1075 N High St
Chillicothe, OH 45601

Hopewell Culture National
Historical
16062 State Route 104
Chillicothe, OH 45601

The Ross County Historical Society
45 W 5th St
Chillicothe, OH 45601

Scioto Trail State Park
144 Lake Rd
Chillicothe, OH 45601

Ross-Chillicothe Convention
and Visitors Bureau
45 E Main St
Chillicothe, OH 45601

Great Seal State Park
4908 Marietta Rd
Chillicothe, OH 45601

Buzzards Roost Nature Preserve
514 Red Bird Ln
Chillicothe, OH 45601

Pump House Center for the Arts
Yoctangee Pkwy
Chillicothe, OH 45601

Dogwood Hills Golf Course
1193 Debord Rd
Chillicothe, OH 45601-9066

The Majestic Theatre
45 E 2nd St
Chillicothe, OH 45601

Mound City
16062 State Route 104,
Chillicothe, OH 45601-8694

OHIO

Ross County

Danbarry Cinema
119 Pawnee Rd
Chillicothe, OH 45601-1770

Old Canal Smokehouse
94 E Water St
Chillicothe, OH 45601-2544

R Kitchen on Paint
66 N Paint St
Chillicothe, OH 45601-2418

Carl's Townhouse
95 W 2nd St
Chillicothe, OH 45601-3111

7 Miles Smokehouse
285 E 7th St
Chillicothe, OH 45601-3451

Sumburger Drive-In
1487 N Bridge St
Chillicothe, OH 45601-4128

Fire and Stone Pizzeria
95 N Paint St
Chillicothe, OH 45601-2427

The Green Tree Restaurant
85 N Paint St
Chillicothe, OH 45601-2427

The Pour House At Machinery Hall
25 E 2nd St
Chillicothe, OH 45601-2524

The Highlands Nature Sanctuary
7660 Cave Rd
Bainbridge, OH 45612-9501

Paint Creek State Park
280 Taylor Rd
Bainbridge, OH 45612-9435

Bainbridge Dental Museum
208 W Main St
Bainbridge, OH 45612-9457

Pike Lake State Park
1847 Pike Lake Rd
Bainbridge, OH 45612-9640

JR's General Store
4715 State Route 41
Bainbridge, OH 45612

Antique Mall with several booths and dealers.

Open Wednesday-Sunday 10AM-6pm.

Owned and operated by Connie Borreson

Ar





American Vintage Warehouse

(740) 779-9040



213 East Water Street, Chillicothe Ohio, 45601



**OFFERING RELIABLE, PROMPT TOWING SERVICES
THROUGH TRUSTED AND PROFESSIONAL DRIVERS**

1 TOWING FAST RESPONSE

1 TOWING FAST RESPONSE offers a wide variety of towing solutions to help our local and surrounding communities during their time of need.

Whether you're looking for a one time tow, or an on-going and trusted team to help you when you find yourself stuck in a rut, then we're the right team for you. We have a broad range of services including standard towing, 24 hour support, roadside assistance, and much more.

No towing need is too big or too small for our team and we can help you with both short distance towing, long haul solutions, full service roadside assistance, and much more.

Come in and see why we've been rated the top service provider in our area for over 30 years.

**TOWING
CAR WINCHING
SHORT & LONG
DISTANCE TOWING
ILLEGAL PARKING REMOVAL
24 HOUR TOWING
ROADSIDE ASSISTANCE
AND MUCH MORE!**

1TOWINGINCHILLICOTHEOH.COM

740.701.1031 | 3573 POLK HOLLOW RD | CHILlicothe, OH 45601

HARPER'S

Garage Inc.

***Need New Tires??
Come see Dave our tire guy.
He can help you choose what
tires work best for your car
or truck.***

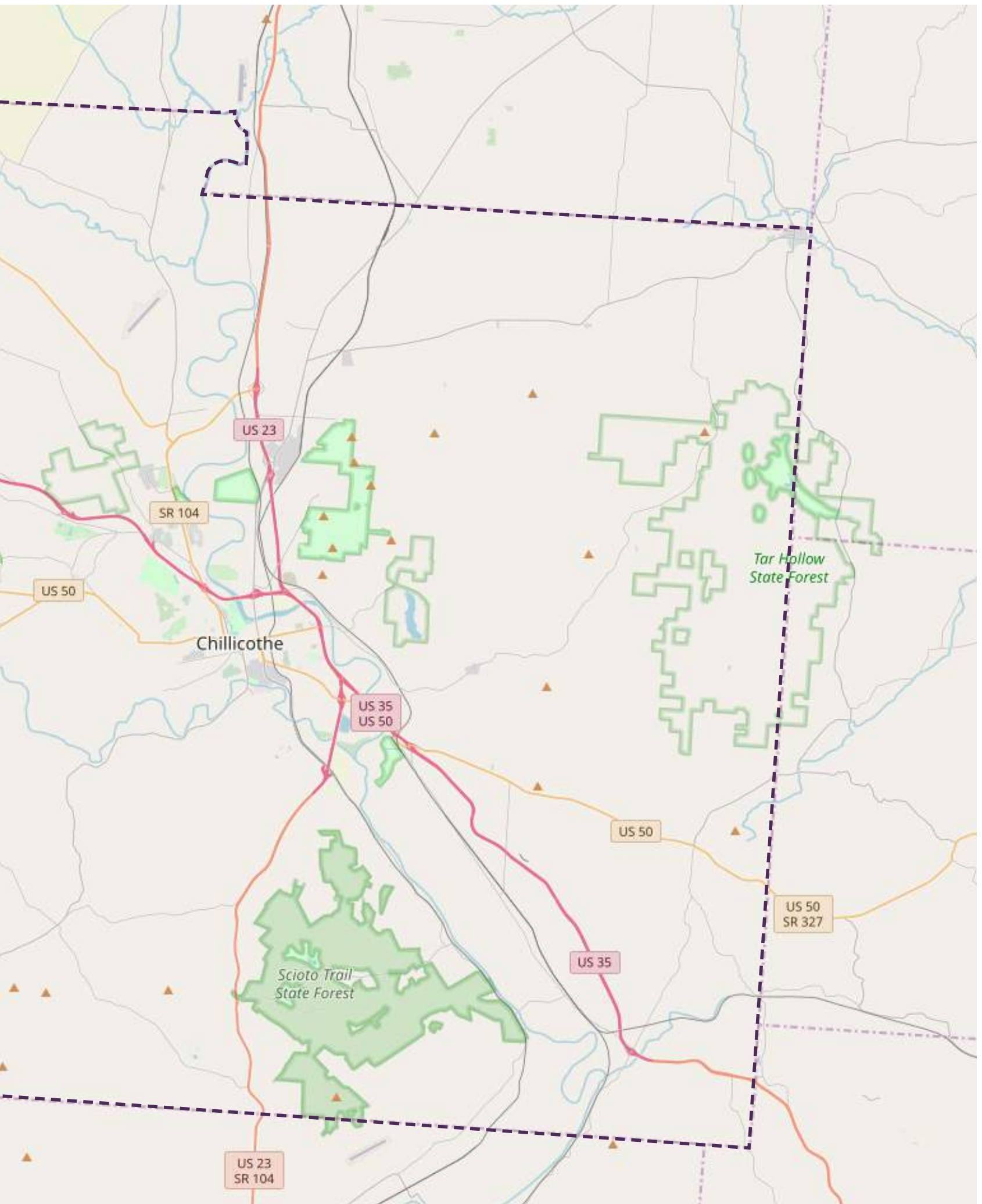


(740) 998-2911



16 S. Main Street Frankfort, Ohio 45628







The B-Dry® System

IN-HOME
CONSULTATION

LIFETIME
WARRANTY

Wet Basements Problems

The B-Dry System

Foundation Repair

Crawl Space

Sump Pumps

Free Estimates





Contact Our South Central Ohio Waterproofing Specialists

740-663-5005

Toll Free at 800-563-2379

2496 Sawmill Village Court | Columbus, OH



Counties Served:

Fayette, OH.
Hocking, OH.
Jackson, OH.
Pike, OH.
Ross, OH.
Vinton, OH.



Angie's list.



**w
w
w
.
b
d
r
y
.
c
o
m**



CENTRAL CENTER HARDWARE

653 CENTRAL CENTER CHILlicothe, OH 45601



Mon.-Sat. 8am-6pm
Sunday 10am-5pm

STIHL
AUTHORIZED DEALER

(740) 773-7272

www.cch.doitbest.com



Automotive
Building Material
Cleaning Supplies
Door & Windows
Electrical
Farm & Ranch
Hand Tools
Hardware
Heating & AC
Housewares
Lawn & Garden
Outdoor Living
Paint & Painting Supplies
Plumbing Supplies
Power Tools & Accessories
Storage & Organization





(740) 634-3231

115 East Main Street Bainbridge, Ohio 45612

24-Hour Emergency Service

Delivery Service

Durable Medical Equipment

Multi-Dose Compliance Packaging

Photo Kiosk

CBD oil

Elderberry Oil

UPS Drop off

Gift Shop

Medication Synchronization

FlavorRX medication Flavoring for liquids

POS testing (Influenza, Stept, A1c, Lipids)

Vaccinations (Influenza, Pneumonia, Shingles, Hepatitis A & B, Tdap, Tetanus)

Long Term injectables (Vitamin B12, Depo-Provera)

Narcan Counseling and Dispensing





COMMUNITY GUIDES **PROMOTIONAL ITEMS** **BANNERS**
FLYERS **COASTERS** **MENUS** **VINYL**

www.heartlandmarketinginc.com

 309.349.3282  heartlandmarketinginfo@gmail.com



DIRECTORY

<p>Sheriff's Office 28 North Paint St. Chillicothe, OH 740-773-1185</p> <p>Ohio Christian University 1476 Lancaster Pike Circleville, OH 877-762-8669</p> <p>Chillicothe & Ross Public Library 140 South Paint St. Chillicothe, OH 740-702-4145</p> <p>Humane Society 2308 Lick Run Rd. Suite A Chillicothe, OH 740-775-6808</p>	<p>Health District 150 E 2nd St. Chillicothe, OH 740-779-9652</p> <p>Recorder 2 N Paint St., Suite E Chillicothe, OH 740-702-3000</p> <p>Treasurer 2 N Paint St., Suite F Chillicothe, OH 740-702-3080</p> <p>Prosecutor's Office 28 N Paint St. Chillicothe, OH 740-772-1327</p>
------------------------------------------------------------------------------------------------------------------------------------------------------------------------------------------------------------------------------------------------------------------------------------------------------------------------------------------------------------------------------------------------------------------------------	---------------------------------------------------------------------------------------------------------------------------------------------------------------------------------------------------------------------------------------------------------------------------------------------------------------------------------------------------------------------------

www.bdry.com

BDry



Contact Our South Central Ohio Waterproofing Specialists

740-663-5005

Toll Free at 800-563-2379

Angie's list



Better
Homes
and Gardens.
REAL ESTATE



Entrepreneur
MAGAZINE



Counties Served:

Fayette, OH.

Hocking, OH.

Jackson, OH.

Pike, OH.

Ross, OH.

Vinton, OH.



2496 Sawmill Village Court | Columbus, OH

Buckeye Metal Sales

- > Metal Roofing & Trims
- > Roofing and Siding
- > Wide Variety of Trim
- > Sliding Door Parts
- > Screws
- > Overhead Doors
- > Matching Caulk & Touch Up Paint
- > Vapor Barrier & Insulation
- > Complete Pole Barn Package
- > Crinkle Coat Options

Buckeye Metal Sales is
now offering **Standing Seam
Metal Roofing** and other
metal profiles



406 Jamison Road
Frankfort, OH 45628-9044
(740) 998-4304
www.buckeyemetalroofing.com

