

# COMPANY PROFILE

## Who We Are?

In the past, architects and designers often faced challenges in turning their concept designs into reality—especially when it came to finding the right suppliers and technical support. Listening to our clients’ needs, we envisioned a company that goes beyond just supplying materials. Our goal has always been to support our clients from the earliest design stage all the way through to final installation.

**NP Alunex** is a Cambodia-based company founded by Cambodians, specializing in the supply and installation of high-quality aluminum materials, including **Ceilings, Sun Control, and Facades**. We proudly serve both commercial and residential clients, offering free consultation services to ensure architects and designers have the detailed product knowledge they need to bring their ideas to life.



## Our Background

**NP Alunex** began its journey under the name “**ALCAM**” in 2019. It was founded by a group of Cambodian professionals with over a decade of experience in the architectural products industry. Starting as product consultants, they brought together deep knowledge of the market, product expertise, and a strong understanding of customer needs to establish a small business.

Driven by dedication, industry insight, and a commitment to quality, the business steadily grew over the years. In 2025, it was officially registered as **NP Alunex**, marking a major milestone in its transformation into a fully recognized and trusted company in the field.



**Alu** - Short for aluminum, clearly indicating material specialization

**Nex** - Refer to next-generation, innovation, or connection (like nexus). It gives a modern, tech-forward tone

## ▶ **Vission**

Become the leading local company in Cambodia, specializing in high-quality architectural products – including Ceilings, Sun Control, and Facades – setting the standard for design, innovation, and durability.

## ▶ **Mission**

Provide innovative, high-performance, and sustainable architectural solutions that responsive to the unique challenges and aesthetic demands of each project, ensuring they benefit both the designers and the investors.

## ▶ **Core Value**

- **V**erified Quality – We ensure every product and service is quality-checked and verified to meet client expectations before delivery.
- **A**ccountable Service – We take full responsibility for the products and services we provide, ensuring that our work delivers meaningful and measurable results for our clients.
- **L**ogical Pricing – Our pricing model is strategically structured to ensure fairness, transparency, and mutual value in long-term business relationships.
- **U**seful Solutions – Innovative and practical solutions that combine innovation with feasibility to deliver adaptable and result-driven outcomes.
- **E**nhance Aesthetic – Ability to transform simple products into visually attractive design that captivates attention and elevates the user experience.

## ▶ Message From The Founders

Our journey to founding **NP Alunex** began not with the sole pursuit of profit, but from listening to our clients' difficulties. We consistently heard about the challenges designers face in bringing their creative visions to life.

We remember saying to ourselves, "Let's become the solution designers have been searching for." That simple yet powerful idea became our mission.

Since day one, our goal has been to build a company—and a team—that delivers innovative, high-performance, and sustainable architectural solutions that responsive to the unique challenges and aesthetic demands of each project, ensuing they benefit both the designers and the investors.

When we started back in 2019, we were small—limited in resources and experience. But every step forward has been guided by our core values: Verified Quality, Accountable Service, Logical Pricing, Useful Solutions, and Enhanced Aesthetics.

Today, we are incredibly proud of what our team has accomplished. And we are deeply grateful for your support. Together, we can continue to elevate the architectural landscape in our country—transforming creative, inspiring designs into reality.

Thank you for being part of our story.

– **The Founders**

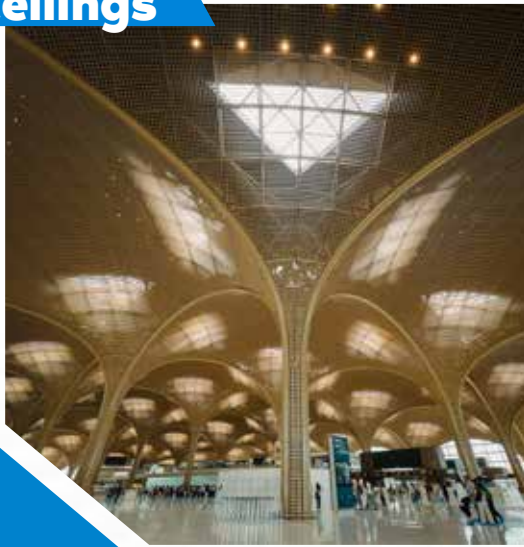
## Products & Services

**NP Alunex** specializes in both standard and custom-designed with high-quality solutions for **Ceilings, Sun Control, and Facades System**, offering a comprehensive service from design to installation.

More than a supplier, we are a dedicated partner committed to bringing your architectural vision to life. We offer a seamless, end-to-end service for the design, fabrication, and installation.

Backed by a team of qualified engineers, technical specialists, and experienced project managers, we collaborate closely with architects, consultants, and contractors to deliver systems that are performance-driven, cost-effective, and meticulously executed to meet the highest standards of quality and design integrity.

**Ceilings**



**Sun Control**



**Facades**





# Ceilings

## ▲ Ceilings

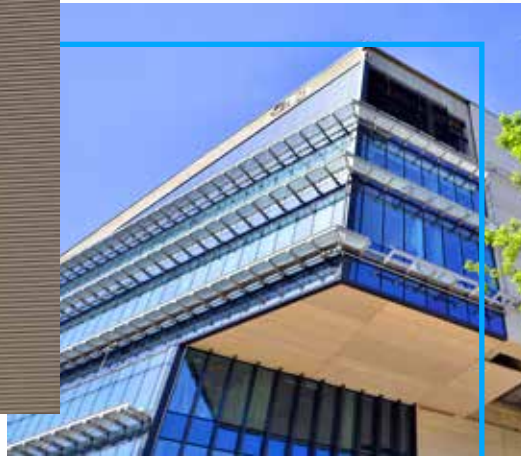
At **NP Alunex**, we believe a ceiling is more than just an overhead surface—it is a canvas for design and an essential element of your space. We provide both standard and custom ceiling options that can be adapted to meet any project scope or budget. We also offer comprehensive solutions designed to meet your project's unique functional and aesthetic requirements.



# Sun Control

## ▶ Sun Control

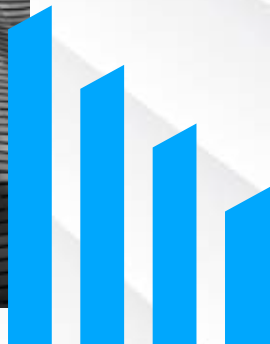
With decades of experience in exterior sun control systems, we provide the knowledge and expertise to seamlessly integrate louvers into your building's architecture. We deliver more than just a shading device—we deliver a comprehensive solution that enhances a building's façade, offers exceptional sun protection, and creates a more inviting interior space. Our commitment to quality, combined with a wide array of customizable designs and materials, ensures that every project achieves its full potential for both visual appeal and environmental performance.



# Facades

## Facades

For architects who demand the ultimate in both aesthetics and resilience, our facade systems provide the definitive solution. We have adapted high-performance technology to deliver a product that sets new benchmarks for durability and design versatility. The result is an architectural facade that empowers you to create iconic designs with the confidence that they will endure, protected against even the most extreme environmental elements.



## Our Top 3 Projects

1

Techo International Airport



2

Aeon Mall Phnom Penh



3

Orkide The Royal Condominium





## ▶ Techo International Airport

<b>Project</b>	: Techo International Airport
<b>Our Client</b>	: Hunter Douglas
<b>Scope of work</b>	: Installation of Aluminum Soffit Ceiling and Column Cladding (including the supply of accessories)
<b>Material</b>	: Head House Ceiling (aluminum honeycomb panel 20mm thickness) North Pier Ceiling (aluminum thickness 0.7mm)
<b>Volume</b>	: Ceiling 170,000sqm   Column Cladding 10,000sqm
<b>Contact Value</b>	: USD 6M



## ► **Techo International Airport**

As part of Cambodia's most ambitious infrastructure project to date, the **Techo International Airport**—masterfully designed by **Foster + Partners**—spans over 240,000 square meters of terminal space. Within this architectural marvel, the soffit ceiling and cladding system plays a pivotal role in defining the terminal's visual identity and spatial experience.

**NP Alunex** was entrusted with the monumental task of delivering and installing over 170,000 square meters of custom-engineered soffit ceiling and cladding. This scope represents a significant portion of the airport's interior finishing works, requiring not only technical precision but also aesthetic harmony with the terminal's flowing, organic design language.

With a dedicated team of over 35 management professionals and more than 500 skilled workers, **NP Alunex** successfully completed the installation in early 2025, overcoming complex geometries, high ceilings, and tight timelines. The result is a seamless integration of form and function—an elegant ceiling system that enhances acoustics, conceals services, and elevates the passenger experience.

This achievement underscores **NP Alunex's** capability in executing large-scale, design-intensive projects with international standards of quality and innovation.

## ▶ **Aeon Mall Phnom Penh**

<b>Project</b>	: Aeon Mall Phnom Penh Renovation
<b>Our Client</b>	: Branch of Obayashi Vietnam Corporation
<b>Scope of work</b>	: Installation including the supply of supporting frame for Facade and Ceiling
<b>Material</b>	: Aluminum Composite Panel 4mm thk (0.4/0.4mm of double aluminum layers)
<b>Volumn</b>	: around 9,000sqm
<b>Contact Value</b>	: USD 1M



## ▶ **Aeon Mall Phnom Penh**

The challenges of **Aeon Mall Phnom Penh** renovation project stemmed from complex installation, demanding work hours during operation, and the intricate parametric "diamond shape" design. This required close coordination between the designers and the on-site construction team to meet the client's expectations and project deadlines.

### **Difficulties With Installation**

The renovation required the precise installation of complex features, which posed a greater challenge than simply obtaining the materials.

- **Intricate materials:** The project included the installation of 9,000 square meters of 4mm-thick aluminum composite panels. These specialized construction elements have specific requirements for handling and placement.
- **Operational constraints:** Since the mall remained open during renovations, installation teams had to navigate busy, customer-facing areas without disrupting mall operations.

### **Complexity Of The Parametric Design**

The use of a parametric "diamond shape" design added another layer of difficulty to the project.

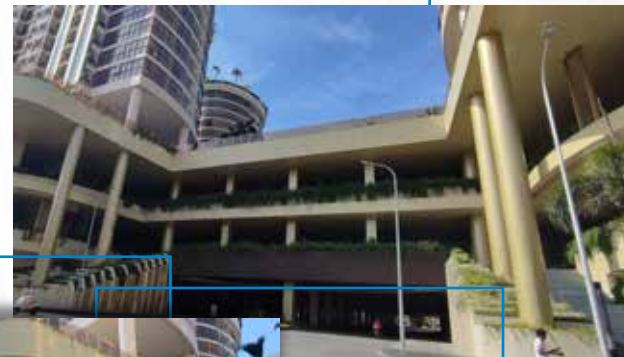
- **Precision and geometry:** Parametric designs involve generating complex geometric patterns that require meticulous precision during installation. The diamond shape would have required exact measurements and careful fitting to achieve the desired effect.
- **Collaboration between teams:** To execute the design effectively, the designers, who created the complex patterns, had to collaborate closely with the on-site team responsible for physically installing the pieces.
- **After-hours work:** Much of the construction would have needed to take place during non-operational hours, such as late at night, to ensure customer safety and minimize noise and disruption during the day.
- **Coordination and efficiency:** The limited window for construction activities would have put pressure on the site team to complete their work efficiently and on schedule, especially when dealing with intricate installations.

### **Successful Outcomes**

Despite these challenges, the main contractor, Obayashi Vietnam Corporation, successfully completed the Aeon Mall Phnom Penh renovation and extension project by November 2023. The successful completion was a result of all contractors effort in general and our close collaboration mentioned in particular.

## Orkide The Royal Condominium

<b>Project</b>	: Orkide The Royal Condominium
<b>Our Client</b>	: Alumetal Cambodia
<b>Scope of work</b>	: Installation including the supply of supporting frame and related accessories for Ceiling and Cladding
<b>Material</b>	: Aluminum Composite Panel 4mm thk
<b>Volumn</b>	: around 7,000sqm
<b>Contact Value</b>	: USD400,000



## Orkide The Royal Condominium

To overcome the installation challenges at **Orkide The Royal Condominium**, a combination of specialized equipment, meticulous planning, and strict safety protocols is essential. The following was our approach that helped to address the issues of working in an operational building, maintaining strict safety, and meeting tight deadline successfully.

### Customized scaffolding for tight and occupied spaces

We used the prefabricated, tool-free modular systems, that offered by the specialist, which could be assembled and dismantled much faster than traditional tube-and-coupler scaffolding. Their scalability allowed for quick configuration around complex shapes and features of the condominium towers.

### Meticulous planning and logistics

- **Detailed site assessment and planning:** Before starting, conduct a thorough site assessment to understand the condo's operating hours, foot traffic, and specific access constraints was our first attempt. We had developed a comprehensive scaffolding plan that specifies the type of equipment for each area and maps out the assembly and dismantling sequence.
- **Phased installation:** We had divided the project into smaller, for easy manageable sections or phases. This allowed for parts of the building to remain in full operation while work was carried out on other sections. Working in smaller zones also reduced the overall time scaffolding needed to be in place at any one location.
- **Strategic scheduling:** Scheduled the most disruptive work, such as the initial installation and removal of major scaffolding components, during off-peak hours, such as nights or early mornings, to minimize disruption to residents.

## ▶ Clients & Partners



# Organization Chart



## Why Choose Us?

### Our Experiences



With years of experience in this industry and our strong portfolio of large-scale projects including Techo International Airport, Aeon Mall Phnom Penh Renovation and Orkide The Royal Condominium - we are confident and believing in our ability to meet your expectation.

### High Responsibility



At **NP Alunex**, we encourage our team to take their work accountability since we believe that every achievement begin with self-discipline, and “responsibility” is the main one

### Quality Commitment



We commit to quality in every phase of our operation from A to Z, ensuring our product and service is being delivered with quality

### Fair Price



Our pricing system is set to align with our product and service's quality which allow our customers to feel fair and valued

### Trustworthy & Supportive



You can rely on our sincere assistance and support to feel more confident and have less to worry about



# NP ALUNEX

(CAMBODIA) CO., LTD



- 📍 #1360, St. Lum, Phum 1,  
Sangkat Svay Rolum, Takmao City, Kandal Province.
- ☎ (+855) 77 40 40 84 / 70 960 760 ( Telegram )
- ✉ inquiries@npalunex.com
- 📷 🎵 📘 NP Alunex Cambodia Co., Ltd.
- 🌐 www.npalunex.com

Build **N**ow  
For **N**ext