

For Lease | Industrial Space
4926-4928 Provident Drive
Cincinnati, OH 45246



Building Specs

- Municipality/County of Premises: West Chester/Butler County
- Electric Specs: Three (3) Phase; 208V; 300 Amps/3,600SF
- Warehouse Clearance Height: 14'
- Nearest Expressway Entrances/Exits:
 - 3 Mile to exit #19 for I-75 North and South (Union Center Blvd.)
 - 1.5 Miles to exits #42A&B for I-275 East and West (Rt #747/Princeton Glendale Rd.)
 - 3.25 Miles to I-75 and I-275 interchange

Available Space

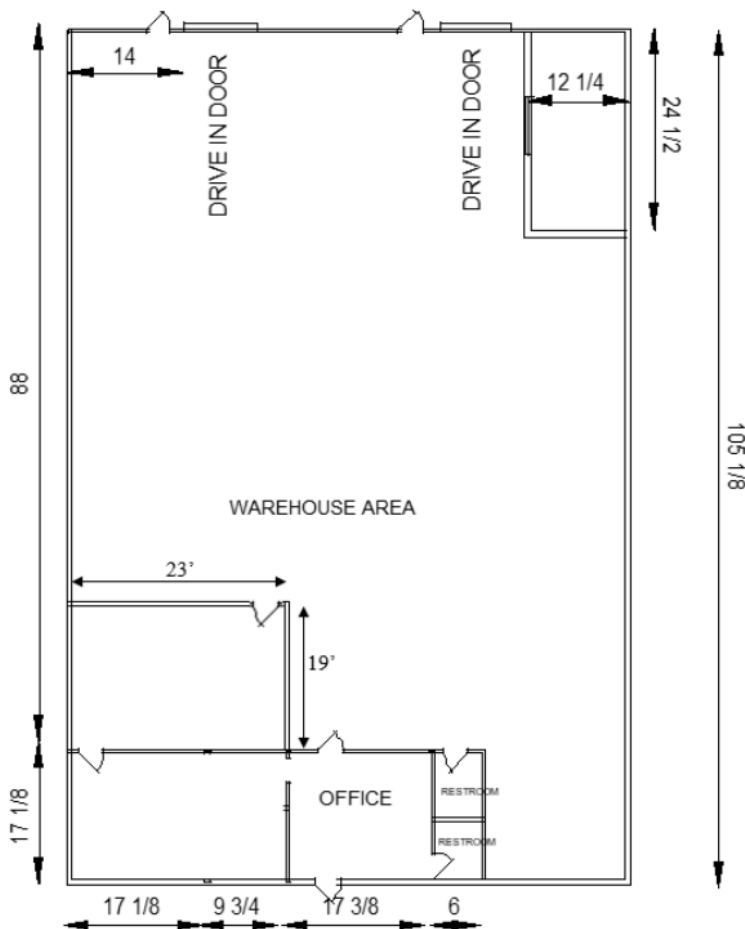
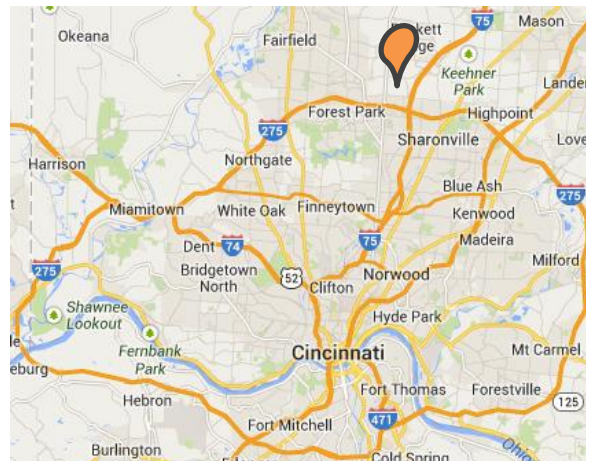
- 4926 Provident Drive
 - Total: 7,200 SF
 - Office: 1,250 SF
 - Warehouse: 5,950 SF
 - Drive-ins: Two (2)
 - Docks: Common Dock
 - Restrooms: Two (2)
 - Rate: \$3,600/mo Modified Gross

All information provided should be independently verified. Regis Realty, Inc., its employees, agents, representatives and affiliates makes no representations or warranties as to the accuracy, reliability, or completeness of the information, text, property boundaries, building specifications or descriptions, graphic links or other items contained in any website, print or otherwise linked to or from our website. The sale offer is made subject to errors, omissions, change of price, prior sale or withdraw without notice.

For Lease | Industrial Space
4926-4928 Provident Drive
Cincinnati, OH 45246



Location



Contact Information

Nathan Berning

513-460-4926

nathan.berning@regisrealty.com

www.regisrealty.com

Regis

9799A Princeton Glendale Road

Cincinnati, OH 45246

All information provided should be independently verified. Regis Realty, Inc., its employees, agents, representatives and affiliates makes no representations or warranties as to the accuracy, reliability, or completeness of the information, text, property boundaries, building specifications or descriptions, graphic links or other items contained in any website, print or otherwise linked to or from our website. The sale offer is made subject to errors, omissions, change of price, prior sale or withdraw without notice.