

# MontanaGrow<sup>®</sup>

## Power Your Garden



Input the best...

...nature does the rest.

- Most Affordable Premium Quality Silicon
- Revitalizes Soil and Improves Plant Health
- 76% Amorphous Silicon Plus Trace Minerals
- Available in Amendment and Granules

HOMES



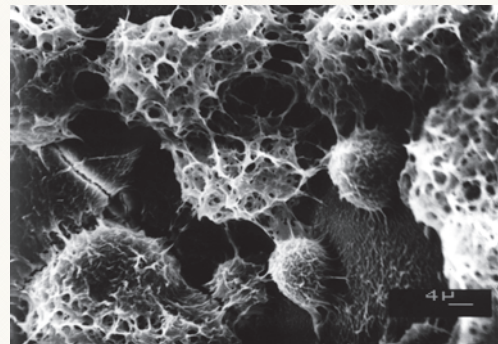
GARDENS



FARMS







## VOLCANIC PYROCLASTIC FLOW

## AMORPHOUS SILICON

MontanaGrow is mined from an ancient deposit of silicon rich, non-crystalline volcanic tuff formed by a pyroclastic flow. MontanaGrow's highly porous nature (above right) is comprised of rich amorphous content that contains over 76%  $\text{SiO}_2$  and provides a natural source of plant available silicon. MontanaGrow reacts dynamically with other minerals and nutrients to address critical soil and plant deficiencies that *Power Your Garden*.

## MontanaGrow Benefits

As a beneficial substance MontanaGrow's plant available silicon improves root systems, yields, and overall plant health and is proven to increase:

- Plant Cell Wall Strength
- Photosynthesis
- Disease Resistance
- Flood Tolerance
- Nutrient Balance
- UV Tolerance
- Carbon Sequestration
- Drought and Salt Tolerance
- High and Low Temperature Tolerance
- Ability to Regulate the Uptake of Heavy Metals

As a volcanic tuff MontanaGrow is porous, weathers easily, and provides immediate and gradual release of silicic acid plus benefits of a non-crystalline natural source of silicon that many liquid silicons do not provide, including:

- Improving soil texture.
- Does not run-off or leach.
- High cation exchange capacity.
- Chemical free, will not burn plants.
- Moderate pH acts as a buffer allowing regular application.
- Moisture holding capacity through absorption and adsorption.
- Reduces nitrogen volatility and improves phosphorus availability.
- 3.5 on the MOHS hardness scale allows mineral to easily break down with weathering.

## Beneficial Elements

MontanaGrow has a distinct combination of trace minerals needed to help optimize plant growth and ROI.

Total Available Silicon ( $\text{SiO}_2$ )	76% *
<b>Other Beneficial Elements</b>	
Potassium ( $\text{K}_2\text{O}$ ) .....	5.22%
Iron ( $\text{Fe}_2\text{O}_3$ ) .....	1.13%
Calcium ( $\text{CaO}$ ) .....	0.61%
Magnesium ( $\text{MgO}$ ) .....	0.22%
Manganese ( $\text{MnO}$ ) .....	0.02%
* MontanaGrow Granules contain 72% Silicon ( $\text{SiO}_2$ )	



Black Eye Fuchsias fed *Peters Pro 20-20-20 Fertilizer* "with and without" MontanaGrow at the recommended application rate of mixing 1/2 cup to 1 cup per 4 to 8 ounces per cubic foot of growing medium.

