



AIA Bronx Chapter

Volume 8, 2018

October 2018

Publication Committee

fredadesign@hotmail.com

Published by the Bronx Chapter AIA Publications Committee to highlight activities and information of interest to the Practicing Architect.

Newsletter

Contents

- I Current Activities:
Chapter Meeting October 25, 2018.
- II Related Articles and Education Opportunities
- Architect Forum – Keeping Moisture Out of Buildings – CEU
 - HWU Update – Most Popular Courses - CEU
 - HWU Update – Seeking Resilient Buildings – CEU
 - Think Wood – New Pre Fab – CEU
 - HWU Update – Disaster Resilience with ICF Construction – CEU
- III National AIA – NYSAIA – Bronx Chapter
- National AIA Convention, Las Vegas
June 6-8, 2019
Las Vegas Convention
Las Vegas, Nevada
Link: <http://www.conferenceonarchitecture.com>
 - SYMP – 2018 Small Firm Symposium, November 13, 2018
Rochester, N.Y. or November 15, 2018
Link: <http://www.aianys.org/symposium>
- IV Next Chapter Meeting is on November 15, 2018 at 12:00pm.
-



October 25, 2018

Meeting Minutes

Meeting began at 6:15pm

Attendees

Bob Esnard
Ken Koons, Sr.
Julian Misiurski
Antonio A. Perez
Martin Zelnik

Guest

Patrick Kelly – Materials, Inc.

Agenda / Discussion:

1. The Materials, Inc. representative, Patrick Kelly, opened the meeting with a presentation on the “science” of creating veneers for panels, floors, doors and specialty architectural products. He reviewed the manufacturing process and the various advantages/limitations of different products. The grading of veneers and the best surface substrates to mount them on was discussed. The most successful backing for wood veneers are; MDF, Particle Board and Cabinet Grade Plywood in that order. The grading of wood veneer varies from 10 to 20, which refers to the thickness of the backing material. The thickness of 1 mil equals 1/1000” in the case of 20 mil the thickness is 20/1000”. In all cases the thickness of the wood veneers is the same, approximately 1/50” made into different width and height sizes.

Patrick Kelly illustrated his talk with samples and after his presentation there was a vibrant question and answer period. He left brochures and offered to assist the Chapter members to select and specify veneers for any of their projects. Patrick welcomes any calls at 347-640-2494.

2. The Minutes of the September 20 meeting were reviewed. Motion for approval was made by Martin Zelnik and seconded by Julian Misiurski and unanimously accepted.
3. Meeting Dates
Due to holidays and the availability of meeting sponsors, the meetings for October, November and December dates were modified from our normal third Thursday of each month. The December meeting had to be changed to a luncheon, as our meeting venue could not guarantee that the Chapter will have a room available in the evening. However, the restaurant offered the room for a luncheon,

without charge. Therefore, meetings dates for the next meetings will have two luncheon meetings followed by two evening meetings:

November 15, 2018 - 12:00pm
December 13, 2018 - 12:00pm
January 17, 2019 - 6:00pm
February 21, 2019 - 6:00pm

4. Bronx Chapter Tour

On October 27th at 10:00 to 12:00pm, Marty Zelnik and Richard Stein were scheduled to host a Tour for two HSW Credits, titled, **Fieldston, A Suburb in the City**. This Tour will be the first of two that the Chapter will organize each year, satisfying the AIA Chapter accreditation requirements. However, due to predicted bad weather, the Tour is rescheduled for the next week, on November 3rd, when hopefully the weather will be better. A notice of the change will be circulated to all members. The fee for the Course will be \$20 for Chapter Members and \$30 for non-members.

5. BQDA 2018

The discussion of whether we should continue with the Brooklyn Queens Design Awards or not, was rescheduled to the November meeting as our representatives to the Awards could not attend the October meeting.

6. Chapter AIA Accreditation

Bob Esnard reported on the status of our Chapter's response to Nationals AIA's accreditation requirements. All Chapters have to be recertified by January 1, 2019. The process has been "simplified" although still a bit onerous for our Chapter, without staff and relying on our member volunteers. We have contracted with Valerie Brown, the staff person for the Westchester AIA Chapter, to assist in our filing, as she had successfully done three years ago. It is hoped that the Chapter will make its submission in late November or early December.

7. New Business

The Nominating Committee Chairman Ken Koons, Sr., presented a slate of officers for 2019 which is:

- Antonio Freda, President
- Giuliano Penna, Vice President
- Robert Esnard, Secretary
- Ken Koons Jr, Treasurer
 - Ken Koons Sr, Director
 - Sara Jazayeri, Director
 - Martin Zelnik, Director
 - Richard Stein, Director

The Chapter is scheduled to vote on the 2019 officers at the next meeting in November.

The meeting was adjourned at 8:05pm.

Next Meeting – The next meeting will be a luncheon meeting at 12:00pm at Artie's Restaurant -on November 15, 2018.

AIA ONLINE CONTINUING EDUCATION

Health Safety & Welfare Credits Available

MTI MASONRY TECHNOLOGY INC. Education Resources

Masonry Technology, Inc. is a Registered Provider with The American Institute of Architects Continuing Education System.

MTI is the sponsor and provider for the following courses. They are complimentary to all designers. Credits upon successful completion will be reported on behalf of all AIA members. Non members please print the certificate as proof of course completion.

Draining Your Wall, Not Your Wallet

<https://www.architect-forum.com/emails/MTI/2018/MTI-816-Course-Logo-Wide600.jpg> style="outline: none; text-decoration: none; display: block;clear:none;float:none;margin-left:auto;margin-right:auto;display:none; mso-hide: none;" align="center" width="600">

Understanding the Temperature & Moisture Relationship
#MTI 816 | 1 LU/HSW

New building code requirements focus on improving energy efficiency, but are we re-creating the EIFS disasters of the early 90s? This course explores the relationship between temperature and moisture, and uses these principles to look at energy-efficient, healthy and sustainable buildings by including drainage in the building envelope.

[REGISTER](#)

[LOGIN](#)

Rainscreen 101 Revisited!

<https://www.architect-forum.com/emails/MTI/2018/Rainscreen-101-Revisited-logo600.jpg> style="outline: none; text-decoration: none; display: block;clear:none;float:none;margin-left:auto;margin-right:auto;display:none; mso-hide: none;" align="center" width="600">

Moisture Management Techniques for Healthier Structures
#MTI 712 | 1 LU/HSW

Moisture is the number one cause of building envelope failures. When used correctly, rainscreen moisture management systems greatly reduce that risk; however, one size doesn't fit all! From furring strips to building wraps to manufactured rainscreen drainage products, the potential rainscreen drainage choices are many, but certainly not equally effective. Learn the fundamentals of choosing the right rainscreen moisture management system for your next project and leave with resources that can simplify the process.

[REGISTER](#)

[LOGIN](#)

From the Ground Up!

<https://www.architect-forum.com/emails/MTI/2018/From-the-Ground-Up-Course-Logo600.jpg> style="outline: none; text-decoration: none; display: block; clear: none; float: none; margin-left: auto; margin-right: auto; display: none; mso-hide: none;" align="center" width="600">

Sustainability Strategies for the Rainscreen Building Envelope
#MTI 609 | 1.25 LU/HSW

Moisture intrusion at all levels of the building envelope is a major sustainability and health issue. This course focuses on three areas of the building envelope that have unique moisture intrusion issues: the foundation/below-grade construction, window and door rough openings and parapet walls. The course not only looks at how moisture gets into these moisture-prone areas of the rainscreen building envelope, it also presents suggestions on how to remedy the problems with effective rainscreen moisture management systems

[REGISTER](#)

[LOGIN](#)

Don't Get Soaked!

<https://www.architect-forum.com/emails/MTI/2018/Dont-Get-Soaked-Course-Logo-Wide600.jpg> style="outline: none; text-decoration: none; display: block; clear: none; float: none; margin-left: auto; margin-right: auto; display: none; mso-hide: none;" align="center" width="600">

Drainage Solutions for the Rainscreen Building Envelope

#MTI 131 | 1 LU/HSW

The health & sustainability costs of moisture in the rainscreen building envelope can be dire! The evidence is clear that moisture related building envelope failures, and their health related consequences, are still commonplace. This course examines some well-known failure incidents as well as health issues related to moisture intrusion; it examines moisture-prone areas of the rainscreen building envelope; and it presents specific suggestions on how to remedy the problems in those areas with effective rainscreen moisture management systems.

[REGISTER](#)

[LOGIN](#)

Weep Now or Weep Later!

<https://www.architect-forum.com/emails/MTI/2018/Weep-Now-or-Weep-Later-logo600.jpg> style="outline: none; text-decoration: none; display: block;clear:none;float:none;margin-left:auto;margin-right:auto;display:none; mso-hide: none;" align="center" width="600">

The Importance of Getting Bottom of Wall Drainage Right!

#MTI 141 | 1 LU/HSW

Effective moisture management systems are critical to HSW, sustainable design and energy efficiency. Cavity walls of 1" or greater must provide adequate drainage at the bottom of the wall to allow moisture to exit efficiently from the building envelope.

This course looks at studies that support the need for adequate weep systems, states the criteria of those systems, and covers the risk zones where those systems are needed. This course is designed to help you meet the AIA's HSW requirements.

[REGISTER](#)

[LOGIN](#)

Moisture Management Solutions

MTI offers many free educational resources at MTIdry.com. Our Hyperspecs section features more than 150 drawings and animations illustrating best-practice solutions to building moisture problems.

Product Performance

Predictable drainage and drying is a key element to high performance building design. Learn more about how

rainscreens work and partner with the experts at MTI today.



Data Drives Everything: The Value of Accurate Cost Data

h/w
U AIA: 1 LU

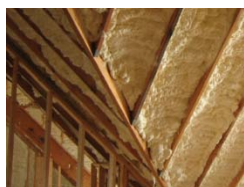
Register



Color Quality and the WELL Building Standard

h/w
U AIA: 1 LU

Register



Keep a Tight Lid on It: Spray Foam Insulation within an Unvented Attic

h/w
U AIA: 1 LU

Register



Advanced Fire-Rated Glazing Assemblies

h/w
U AIA: 1 LU/HSW

Register



Glass Mat and High-Performance Wallboards

AIA: 1 LU/HSW

[Learn More](#)



Understanding the Benefits of Non-Fiberglass Reinforced Plastic Wall Panels

AIA: 1 LU/HSW

[Learn More](#)



Top Daylighting: A Circadian Health and Wellness Perspective

AIA: 1 LU/HSW

[Learn More](#)



Sound Control in Architecture: Sound Absorption

IDCEC: .1 CEU, AIA: 1 LU/HSW

[Learn More](#)

THINK
WOOD®



[E-BOOK DOWNLOAD](#)

New Book Explores Cutting Edge CLT Projects

Now more than ever, with innovations like cross-laminated timber (CLT), wood is capturing the imaginations of today's leading designers and building professionals. To celebrate this innovation and showcase what's possible with CLT, we're pleased to make *100 Projects UK CLT* available to you. This book was made possible by the Softwood Lumber Board and the Forestry Innovation Investment in collaboration with architects Andrew Waugh and Anthony Thistleton.

[Download your digital copy today.](#)

LEARN AND EARN

[New! Designing Sustainable, Prefabricated Wood Buildings CEU](#)

Keen to learn more about the benefits of prefabricated wood buildings? This [online CEU](#) demonstrates why prefabrication is an efficient and sustainable building practice and explores the advantages of building with prefabricated wood components in terms of speed and efficiency of construction, design flexibility, waste reduction, environmental performance and improved life safety. [Take the CEU.](#)

Need credits? Learn and earn with Think Wood's wide variety of CEUs.

[Check out all our CEUs.](#)

LATEST WOOD NEWS

[Stay up to date](#) with the latest news on wood projects across North America, [events](#), [podcasts](#), [videos](#) and more. Follow our [blog](#) for timely and informative articles on design trends. Search the [Research Library](#) to get peer-reviewed reports.

- [Sidewalk Labs' Google-backed Smart City To Use Tall Timber Technologies](#)
- [Geeks are Chic and Wood is Cool for School: How Timber is Transforming School Design](#)
- [New Project | McDonald's Global Flagship in Chicago Features CLT](#)

CONFERENCES & EVENTS

[New York AR Innovations Conference](#)

How do we build for the cities of the future and solve some of the most urgent issues in today's urban centers? Explore these topics, the benefits of mass timber and more at this year's Architectural Record's Innovations Conference. Don't miss timber experts Tanya Luthi of Fast + Epp and Michael Green of MGA.

Date: November 1

Location: NYU Law School, Vanderbilt Hall

[Learn more](#)

[Greenbuild Conference & Expo](#)

Greenbuild is for professionals in architecture, construction, engineering, planning, and interior design who depend on thoughtful and ethical solutions which promote wellness and resiliency in construction and urban development. **Visit our booth 829** to learn more about the latest on wood, mass timber and its sustainable benefits.

[Learn more](#) or [get a free Expo Pass courtesy of Think Wood](#)

Date: November 14-16

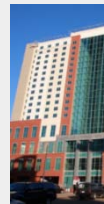
Location: Chicago, McCormick Place



Achieving Disaster Resilience with ICF Construction

Cost: Free

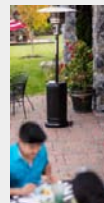
Credits: AIA 1 LU/HSW



Concrete Waterproofing with Crystalline Technology

Cost: Free
Credits: AIA 1 LU

REGISTER



Adding Value and Innovation to Remodeling Projects With Propane

Cost: Free
Credits: NAHB 1 Hour,
NARI 1 Hour, AIA 1 LU

REGISTER

REGISTER



Advanced Seamless Stone Surfacing

Cost: Free
Credits: AIA 1 LU

REGISTER

End