



Published by the Bronx Chapter AIA Publications Committee to highlight activities and information of interest to the Practicing Architect.

NOTICE: Unfortunately, due to the current pandemic corona virus since March 2020, subsequent newsletters will be abbreviated to include only the basic activities of the AIA Bronx Chapter until the health crisis is over.

Newsletter

	<u>Contents</u>	<u>Page</u>
I	Current Activities:	2
	• Chapter Virtual Meeting Minutes of December 16, 2021	
II	Related Articles and Education Opportunities:	
	• TriState Conference – AIA New Jersey, AIA New York State and AIA Pennsylvania AIA Conference on Architects 2022 AIA'22 June 23-25, 2022 - Chicago	
III	Next Chapter Meeting is Virtual and on Thursday January 20, 2022, at 6:00pm.	6
IV	Appendixes	7



December 16, 2021
AIA BRONX CHAPTER MEETING MINUTES

Meeting began at 6:03pm.

Attendees:

Boris Baranovich
Bill Caplan
Sara Djazayeri
Bob Esnard
Antonio Freda
Ken H. Koons, Sr.
Ken A. Koons, Jr.
Robert Markisz
Julian Misiurski
Giuliano Penna
Bryan Zelnik
Martin Zelnik

Guest

Nina Brajdic
John Penta
Architectural Sales Representatives
TCL Transceramica, Inc.

Agenda / Discussion

1. Nina Brajdic and John Penta, Architectural Representatives from TCL Transceramica, Inc., presented a program on “Ventilated Porcelain - Slab Façade” tile and manufactured exterior walls.

Nina started with a short presentation of various stone and tile products illustrating their versatility to be used in interior as well as exterior locations. She outlined how all the products are all manufactured in one large Tennessee factory, Fiandre Architectural Surfaces Company, to produce stone and tile products for the American and international markets.

Nina then introduced John Pente, their company’s technical representative who presented the Continuing Educational Course with slides, photo’s, and drawings to demonstrate how Ventilated Façade Stone exterior walls can be efficiently and economically used that are;

- Sustainable building products which makes any building a more energy efficient thermal regulator than almost any other component of a building.
- Anchored in two ways, by the visible or invisible undercut anchoring systems that transfer the load of the tiles onto aluminum sub-frame seconded to the building’s façade.
- Easy to install, have the benefit of low maintenance and is durable.
- A system that deflects rain and moisture within the cavity of the ventilated façade protecting the building from water/moisture penetration.

John described that covering a building façade with ceramic tile, outperforms other cladding materials such as natural stone, wood, aluminum and or prefabricated concrete systems. In addition, as it is common knowledge that indoor air quality has a significant effect on the occupants of a building, porcelain tile ventilated façade systems, which incorporate the open joint rain screen system, are fast emerging as the choice for buildings across a variety of commercial and/or residential sectors today. In fact, ventilated façade systems are more and more playing a key role for sustainable building envelopes especially since reduction in consumption is now driving sustainability.

A system with a naturally ventilated wall cavity has 80-year plus-life expectancy and helps to eliminate potential for “sick-building syndrome,” common issue with closed cavity walls. When a ventilated façade system is installed, moisture is removed from the areas with structural steel studs therefore eliminating corrosion within the structural wall.

John summarized his presentation with a series of physical examples in New York City, and then concluded with question-and-answer period. The presentation that John and Nina made was professional, enthusiastic, and well received by Chapter members. They both volunteered to assist our members with their projects and welcomed being contracted at:

John Penta
Architectural Sales Representative
Email: John.penta@comcast.net
Cell: 732-539-2898

Nina Brajdic
Email: nbrajdic@transceramica.com
Cell: 732.539.2898

2. The Minutes of November 18, 2021 were attached to the December meeting notices for members to review. A motion to approve the November Minutes was made by Marty Zelnik, which was seconded by Julian Misiurski, and the November 18, 2021 minutes were then unanimously approved.
3. Next Meeting Dates:
The Chapter again, reviewed and discussed the new virus outbreaks and reaffirmed that meetings for the foreseeable future will have to be virtual and held at 6:00pm. Members continue to hope that the virus will abate, and that a meeting venue can be found, allowing us to return to in-person meetings.

Therefore, the next few Chapter meetings will be virtual and held at 6:00pm the schedule to be:

January 20, 2022	at 6:00pm
February 17, 2022	at 6:00pm
March 12, 2022	at 6:00pm

4. AIA National Component Accreditation - Checklist for 2022
Bob Esnard reviewed the AIA National request to all AIA Chapters to submit a short 5 point accreditation checklist for year 2021. National, due to the Covid Health crises, pushed the full accreditation review, originally scheduled for this year, to next year, 2022. Although, the Bronx

Chapter performed the services required, we did not have them in official documents which could be in easily uploaded formats for submittal. In addition, one of the points "Continuing Education", changed from a minimum requirement for the Chapter from creating only 4 CEU credits a year, to 18 CEU credits. The Bronx Chapter has, for the last three years produced approximately 10-14 CEU Credits per year. However, since 2017 the Chapter has an agreement with the AIA Westchester + Hudson Valley Chapter to co-share continuing education programs each year. We have been conforming to the agreement, except have not formally executed documents. This has been now corrected and we will now as a standard practice, at the beginning of each year formalize the practice for filing.

5. Chapter Budget

The Chapter treasurer Ken Koons, Jr. submitted a proposed budget for 2022. He described the proposal which is similar to what was approved for 2021, with three differences:

- (1) The meeting venue amount of \$2,000 is tentative and lower, as we have been performing our meetings and discussions virtually. The hope is that the Chapter can start in-person meetings and we would have to rent space that will allow members parking and mass transit access. However, since we have not secured a location, the number is an estimate.
- (2) The AIA Compliance Consultant amount was increased to \$2,200 as next year the Chapter will require more assistance to satisfy AIA information issues. In the last few years, we have been using the staff of the Westchester + Hudson Valley Chapter, Executive Director Valerie Brown. Her services have been invaluable, as she understands the National Institute issues and saves a lot of our volunteer member's time and money. In addition, she simultaneously is very familiar to the costs related to operating a Chapter in our part of New York State.
- (3) The Awards Program was expanded during 2021 to \$3,000. This new program evolved from a suggestion by Ofé Clarke a Chapter Director, who proposed the idea of converting last years' Architectural Design Program budget item to a Scholarship Program for Bronx Architectural students.

The discussion of the budget indicated that there was a general agreement for the Proposed Budget, and it would be useful to vote tonight to approve next year's budget, as per the Chapter's Charter requirement to have a budget in place by January 2022 that is a conservative realistic balanced operational budget.

After the discussion, Bill Caplan made a motion to adopt the 2022 Budget, Julian Misiurski seconded it and the Budget for 2022 was unanimously adopted.

6. DOB Update:

Several of the officers and members once again expressed frustration working generally with DOB; but especially with the Bronx DOB Office. The discussion again focused on the fact that the Mayor, his office, the DOB Commissioner and employees all seem to have used the pandemic as an excuse not to directly communicate, not only with individual architects and engineers, but have been resistant to allow the DOB local office Commissioner or key staff communicate directly with the Chapter contact is only with individuals and through email appointments and occasional scheduled telephone conversations.

It was pointed out that DOB has continued having formal and scripted question and answers sessions using telephone and zoom conferences by borough. In these sessions, the agency only responds to specific questions submitted a few days in advance of the public questions/answer sessions. The Queens Chapter is the only Chapter in the city that actively publicizes them and encourages their members to participate. The Queens Chapter is trying to get a little bit more involvement and to focus the sessions with DOB.

The frustration was tinged with the thought that the current mayor and its commissioners only have 3 to 4 weeks left, before Mayor elect Eric Adams takes over. The hope is that Mayor Adams will choose commissioners and staff that would have a more realistic approach to the construction industry and the applicants, i.e., architects and engineers that file with NYC agencies. The hope is to return to have government staff once again, meeting with the industry so that decisions can be more productive made in reasonable time frames. The goal is to have conversations that will allow for applicants and plan examiners to review projects to possibly anticipate issues and discuss procedures to minimize the time of the approval process, the number of steps or issues before approval. The goal is to avoid issues before they become “paper” or bureaucratic problems.

7. Chapter Committees:

Several of the Chapter Committee Chairmen could not make the meeting. Therefore, there was an abbreviated discussion of committee efforts. However, several specific items were discussed related to various committees:

- Education:

Sara Djazayeri unfortunately has Covid and was not feeling well and she had to excuse herself from the meeting. However, the Chapter Vice President, Marty Zelnik reported on the efforts to implement the “2022 AIA Bronx Empowerment Scholarship”. Marty who was a former college architectural teacher, had written a letter to the chairman of the City College of New York (“CCNY”) School of Architecture, June Williamson, associate AIA, RA, LEED. The Dean enthusiastically responded and communicated with Marty since our last meeting. She had requested that the Scholarship Program be modified to; be limited to Architectural school Juniors so they can offset some of their costs school in their senior year rather than seniors who would have already paid their costs for senior year. In addition, she requested to delay the award from the end of December 2021, to the end of January 2022. The timing issue is that, the end of December is when students are most busy submitting their term work and taking exams. Our timing limitations was only that President Sara Djazayeri, secured a Design Studio that agreed to host and pay for the Chapter to host an event to grant the award to the students on February 8, 2022. The Dean then indicated that CCNY will be able to select the two awardees by the end of January as the teachers, professors, teaching staff and students at the school will have time to make the selection. Marty Zelnik, Ofe Clarke and Sara Djazayeri modified the agreement to make the two requested changes to limit the scholarship awards only to juniors and to extend the award date to January 31, 2022. The Dean responded that CCNY will conform to the agreement as modified and the scholarship program could proceed.

- Emerging Professionals (EP):

Josette Matthews has been in contact with a representative of the Brooklyn Chapter Committee of Emerging Professionals’ (EP). Bob Esnard reported that several associate members are looking to be part of an EP Committee and would like to participate in a study

group to pass the Architectural Licensing Exam and move from associate to members of the AIA. The Brooklyn Chapter generally holds their sessions on Tuesday nights and Josette will try to assist our associate members to coordinate with the study group. Bob indicated that he would give Josette a list of the Chapter associates who expressed interest with their phone and email addresses. Bill Caplan also volunteered to add to the Chapter website to direct interested associate members to contact Josette Matthews and the EP Committee, in an attempt to increase participation. The goal is to assist interested associates to help them professionally within the Chapter.

- **Chapter Cloud:**
Bob Esnard discussed the importance of having the Cloud in place and operational. He talked with Valerie Brown how Westchester +Hudson Valley set their Cloud up and she successfully organized it so that Chapter members had access if and when they need it, while simultaneously giving selected Chapter member's unrestricted access to change or modify cloud documents. Josette Matthews has been working on this and will reach out to Valerie to see if she could utilize some of her techniques and learn from Westchester's experience. It was also mentioned that some of information produced to reply to AIA Nationals' Checklist Request for 2021 information will be given to Josette to include in the cloud. The goal will be to systematically include all documents, newsletters, minutes and resolutions in the cloud in such a way, that it can be easily filed in the cloud then accessed as needed.
- **Tours**
Contact was made with the Bronx Historical Society and who are anxious to resume the partnership with the Chapter to produce Bronx tours in the spring. This would be the Chapters first since Covid started, as well as to plan a second in the fall, both for 2 CEU credits on specific Saturday mornings. They are looking at presenting suggestions for us to discuss in our January or February meeting to schedule a tour in late May or early June of 2022. The Bronx Historical Society has appointed a staff member as their representative, and Julian Misiurski a Chapter Director will participate to organize and implement these tours.

8. **New Business:**

No new business was proposed.

Unfortunately, two of our members Sara Djayazeri and Juliano Penna both have the covid virus have been under the weather. We wish them both a quick recovery.

The meeting ended at 7:43pm with a wish to all for a Happy Holiday Season.

IV. **Next Meeting:**

Due to the continuing health crisis the next meeting will again be Virtual on:

Thursday January 20, 2022,

at 6:00PM

ITEM

PAGE

Appendix I -

8

**GHS – Porcelain Rainscreen System
Concealed Fasteners**

Appendix II -

25

AIA Bronx Chapter 2022 Budget

Appendix I

GHS – Porcelain Rainscreen System Concealed Fasteners

GHS - PORCELAIN RAINSCREEN SYSTEM - CONCEALED FASTENERS **GRANITECH**

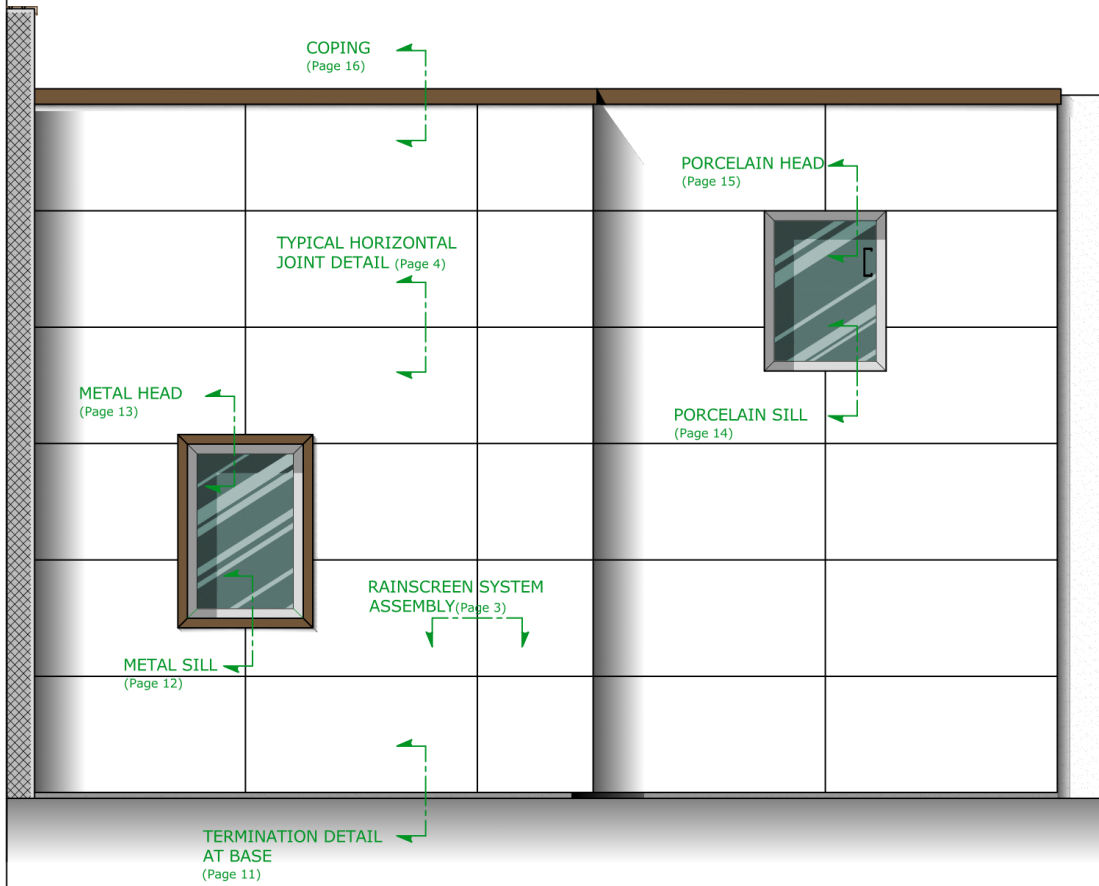
GHS

GRANITECH

© 2007 - 2018 Granitech
314 W. Superior, suite 201
Chicago, IL 60654
P: +1 312 506 2800
Email: info@granitech.it

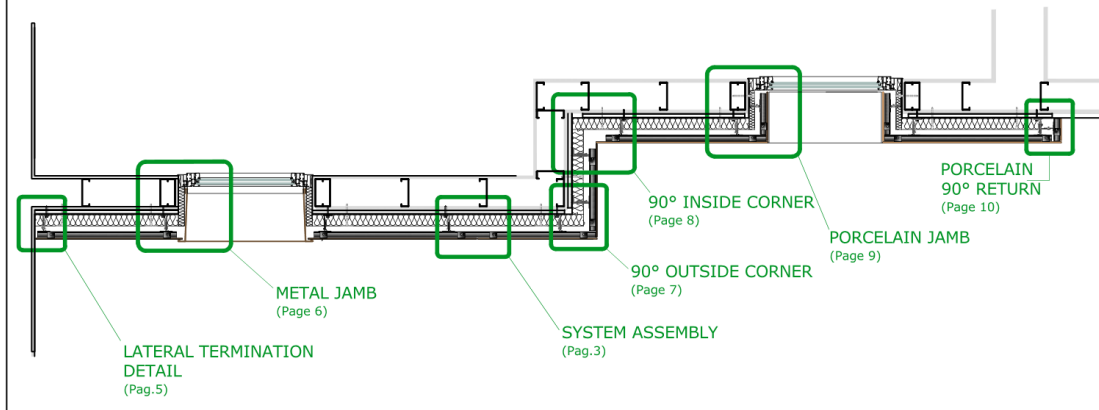
PORCELAIN CLADDING ELEVATION

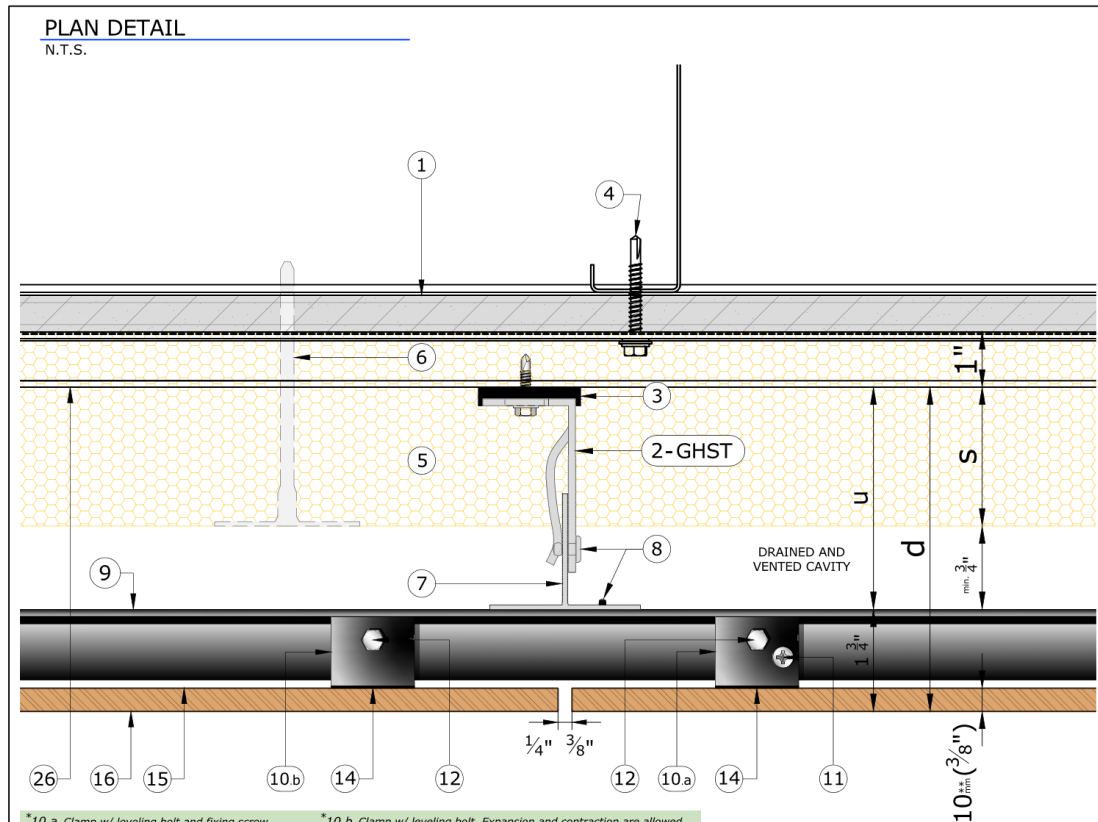
N.T.S.



WALL PLAN

N.T.S.





*10.a Clamp w/ leveling bolt and fixing screw
Slabs is secured to the C rail by tightening the self tapping screw.

*10.b Clamp w/ leveling bolt. Expansion and contraction are allowed by kipping the clamp not fastened to the rail. The bolt is used for adjusting and leveling the slab.

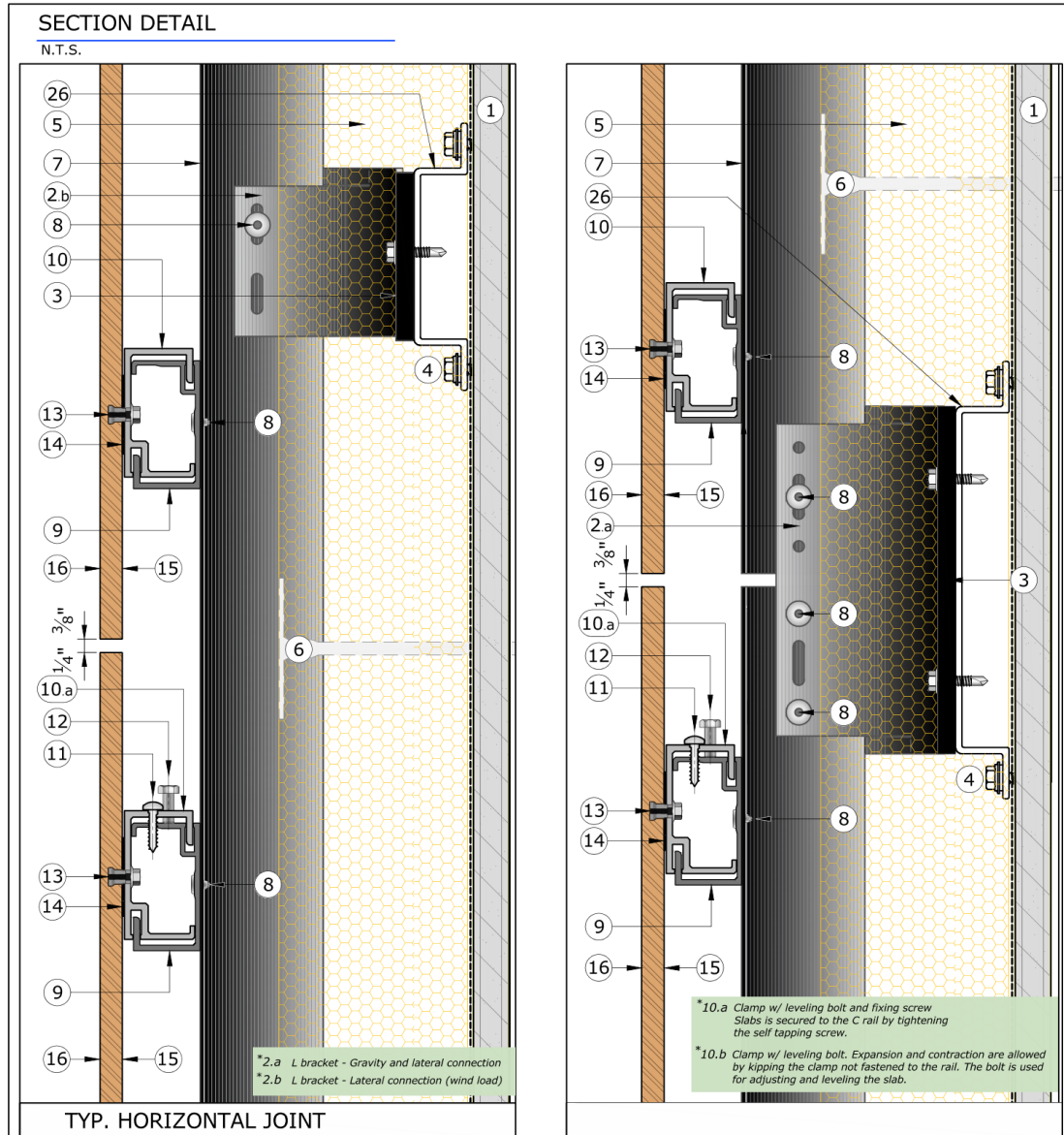
** Slab thickness from 3/16" to 15/32"

LEGEND:

1. Exterior sheathing on cold formed metal framing	14. Compressible gasket
2. L-bracket - Powder coated (black) Al 6060-T6	15. Fiberglass safety mesh
3. Thermal brake spacer	16. Porcelain panel
4. Wall anchors	17. Brake metal jamb
5. Continuous thermal insulation	18. Brake metal sill
6. Plastic anchor - to fasten thermal insulation to wall	19. Brake metal head
7. Vertical T-profile - Powder coated (black) Al 6060-T6	20. Porcelain jamb
8. Stainless steel or aluminum rivet	21. Porcelain sill
9. Horizontal rail C-profile - Powder coated (black) Al 6060-T6	22. Porcelain head
10.a Concealed Clamp - Powder coated (black) Al 6060-T6	23. Water proofing
11. Self tapping/fixing screw	24. Micro-perforated aluminum grille
12. Leveling bolt	25. Metal coping
13. "KEIL" concealed anchor	26. Metal hat channel

OVERALL ASSEMBLY DEPTH

GHS SYSTEM TYPE	Bracket (GHST)	depth min.(d)		depth max.(d)		space clear min.(u)		space clear max.(u)		insulation thickness (s)	
GHS-50	50 mm	4 3/8"	110 mm	5 1/8"	130 mm	2 1/2"	65 mm	3 1/2"	90 mm	1 1/2" - 2 1/2"	4 - 6 cm
GHS-75	75 mm	5 1/8"	130 mm	6 1/8"	155 mm	3 3/8"	85 mm	4 1/2"	115 mm	2 1/2" - 3"	6 - 8 cm
GHS-100	100 mm	6 1/8"	155 mm	7 1/8"	180 mm	4 3/8"	110 mm	5 1/2"	140 mm	3" - 4 3/4"	8 - 12 cm
GHS-125	125 mm	7 1/8"	180 mm	8 1/8"	205 mm	5 3/8"	135 mm	6 1/2"	165 mm	4" - 5 1/2"	10 - 14 cm
GHS-150	150 mm	8 1/8"	205 mm	9"	230 mm	6 1/4"	160 mm	7 1/2"	190 mm	5 1/2" - 6 1/4"	14 - 16 cm
GHS-175	175 mm	9"	230 mm	10"	255 mm	7 1/4"	185 mm	8 1/2"	215 mm	6 1/4" - 7"	16 - 18 cm
GHS-200	200 mm	10"	255 mm	11"	280 mm	8 1/4"	210 mm	9 1/2"	240 mm	7" - 8 1/2"	18 - 22 cm

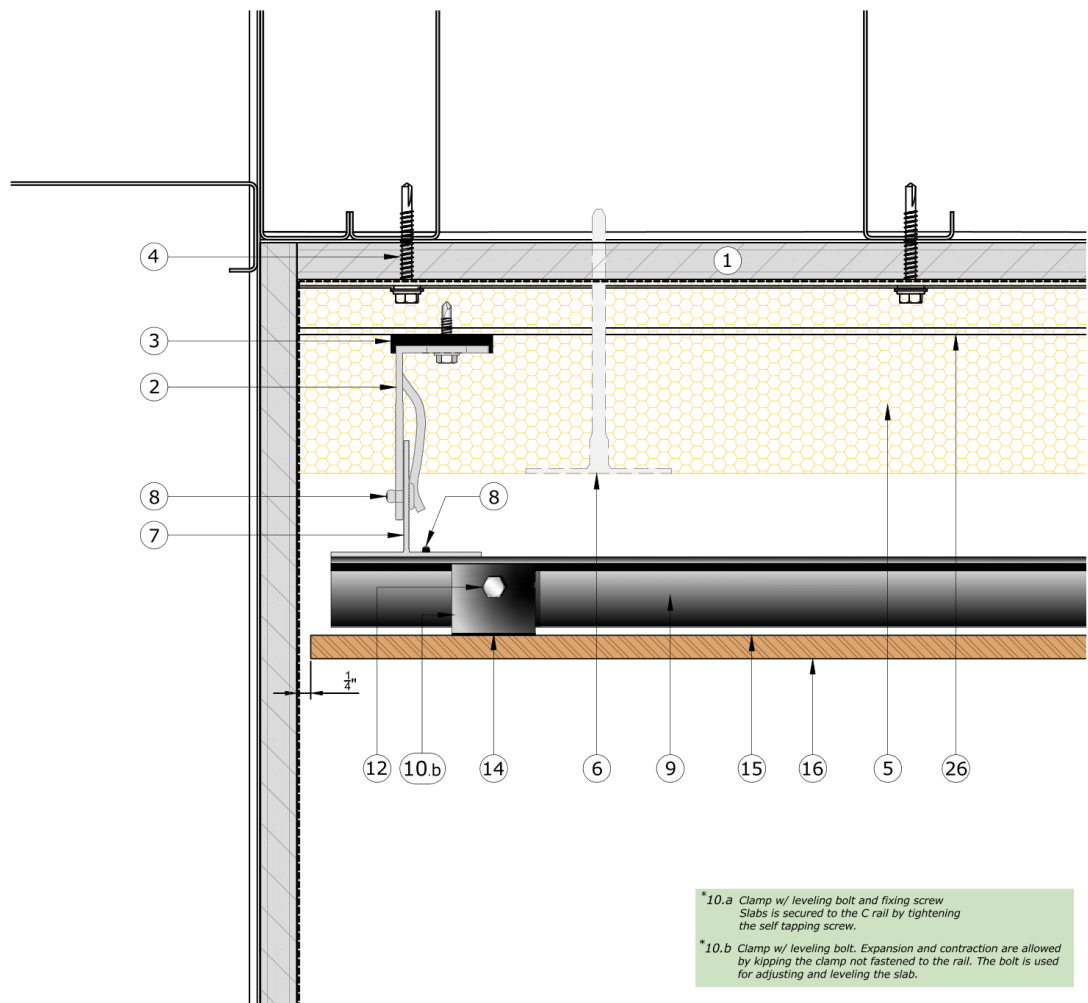


LEGEND:

1.	Exterior sheathing on cold formed metal framing	14.	Compressible gasket
2.*	L-bracket -Powder coated (black) Al 6060-T6	15.	Fiberglass safety mesh
3.	Thermal brake spacer	16.	Porcelain panel
4.	Wall anchors	17.	Brake metal jamb
5.	Continuous thermal insulation	18.	Brake metal sill
6.	Plastic anchor - to fasten thermal insulation to wall	19.	Brake metal head
7.	Vertical T-profile - Powder coated (black) Al 6060-T6	20.	Porcelain jamb
8.	Stainless steel or aluminum rivet	21.	Porcelain sill
9.	Horizontal rail C-profile - Powder coated (black) Al 6060-T6	22.	Porcelain head
10.*	Concealed Clamp - Powder coated (black) Al 6060-T6	23.	Water proofing
11.	Self tapping/fixing screw	24.	Micro-perforated aluminum grille
12.	Leveling bolt	25.	Metal coping
13.	"KEIL" concealed anchor	26.	Metal hat channel

PLAN DETAIL

N.T.S.

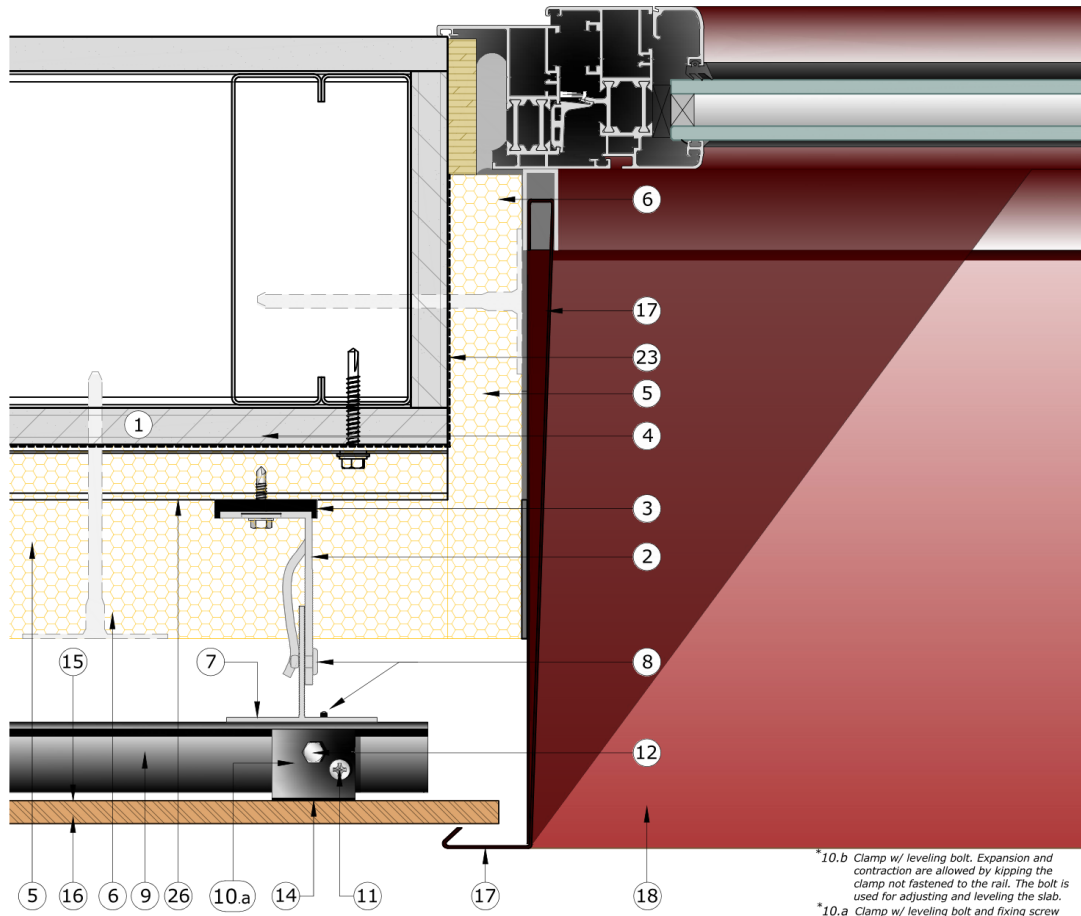


*10.a Clamp w/ leveling bolt and fixing screw
Slabs is secured to the C rail by tightening the self tapping screw.

*10.b Clamp w/ leveling bolt. Expansion and contraction are allowed by kipping the clamp not fastened to the rail. The bolt is used for adjusting and leveling the slab.

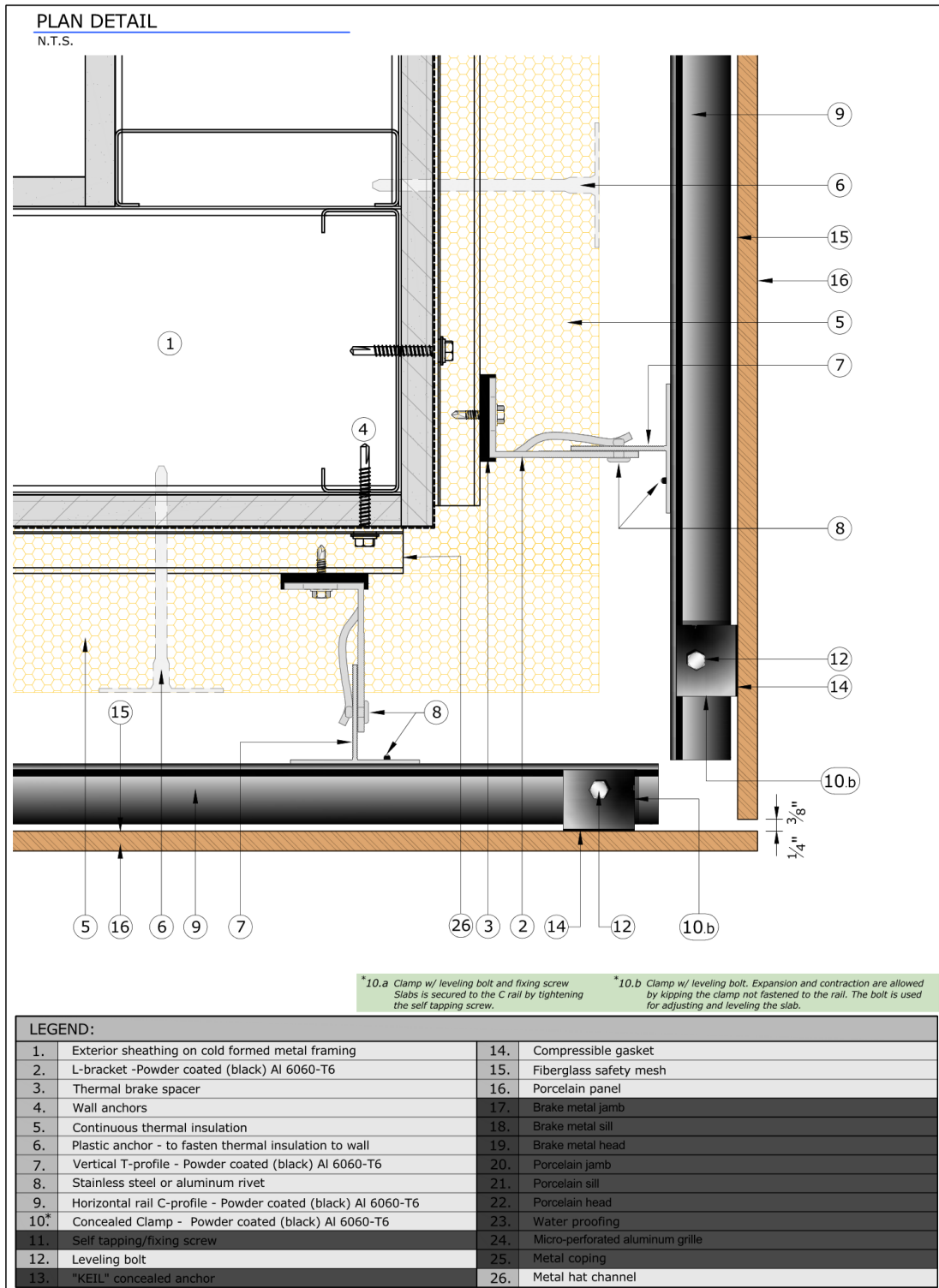
LEGEND:			
1.	Exterior sheathing on cold formed metal framing	14.	Compressible gasket
2.	L-bracket -Powder coated (black) Al 6060-T6	15.	Fiberglass safety mesh
3.	Thermal brake spacer	16.	Porcelain panel
4.	Wall anchors	17.	Brake metal jamb
5.	Continuous thermal insulation	18.	Brake metal sill
6.	Plastic anchor - to fasten thermal insulation to wall	19.	Brake metal head
7.	Vertical T-profile - Powder coated (black) Al 6060-T6	20.	Porcelain jamb
8.	Stainless steel or aluminum rivet	21.	Porcelain sill
9.	Horizontal rail C-profile - Powder coated (black) Al 6060-T6	22.	Porcelain head
10.*	Concealed Clamp - Powder coated (black) Al 6060-T6	23.	Water proofing
11.	Self tapping/fixing screw	24.	Micro-perforated aluminum grille
12.	Leveling bolt	25.	Metal coping
13.	"KEIL" concealed anchor	26.	Metal hat channel

PLAN DETAIL
N.T.S.

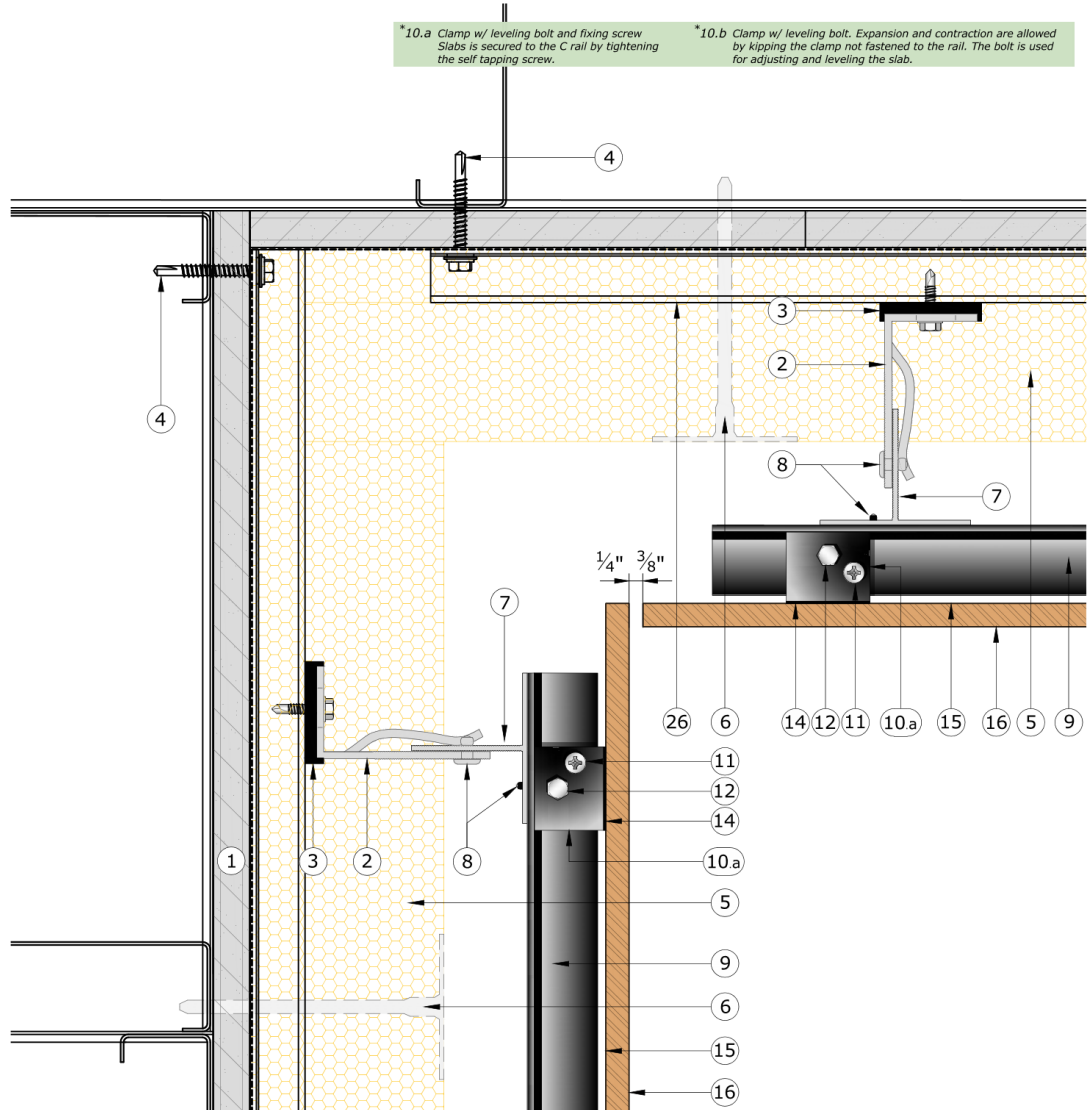


*10.b Clamp w/ leveling bolt. Expansion and contraction are allowed by kipping the clamp not fastened to the rail. The bolt is used for adjusting and leveling the slab.
*10.a Clamp w/ leveling bolt and fixing screw Slabs is secured to the C rail by tightening the self tapping screw.

LEGEND:			
1.	Exterior sheathing on cold formed metal framing	14.	Compressible gasket
2.	L-bracket -Powder coated (black) Al 6060-T6	15.	Fiberglass safety mesh
3.	Thermal brake spacer	16.	Porcelain panel
4.	Wall anchors	17.	Brake metal jamb
5.	Continuous thermal insulation	18.	Brake metal sill
6.	Plastic anchor - to fasten thermal insulation to wall	19.	Brake metal head
7.	Vertical T-profile - Powder coated (black) Al 6060-T6	20.	Porcelain jamb
8.	Stainless steel or aluminum rivet	21.	Porcelain sill
9.	Horizontal rail C-profile - Powder coated (black) Al 6060-T6	22.	Porcelain head
10.*	Concealed Clamp - Powder coated (black) Al 6060-T6	23.	Water proofing
11.	Self tapping/fixing screw	24.	Micro-perforated aluminum grille
12.	Leveling bolt	25.	Metal coping
13.	"KEIL" concealed anchor	26.	Metal hat channel



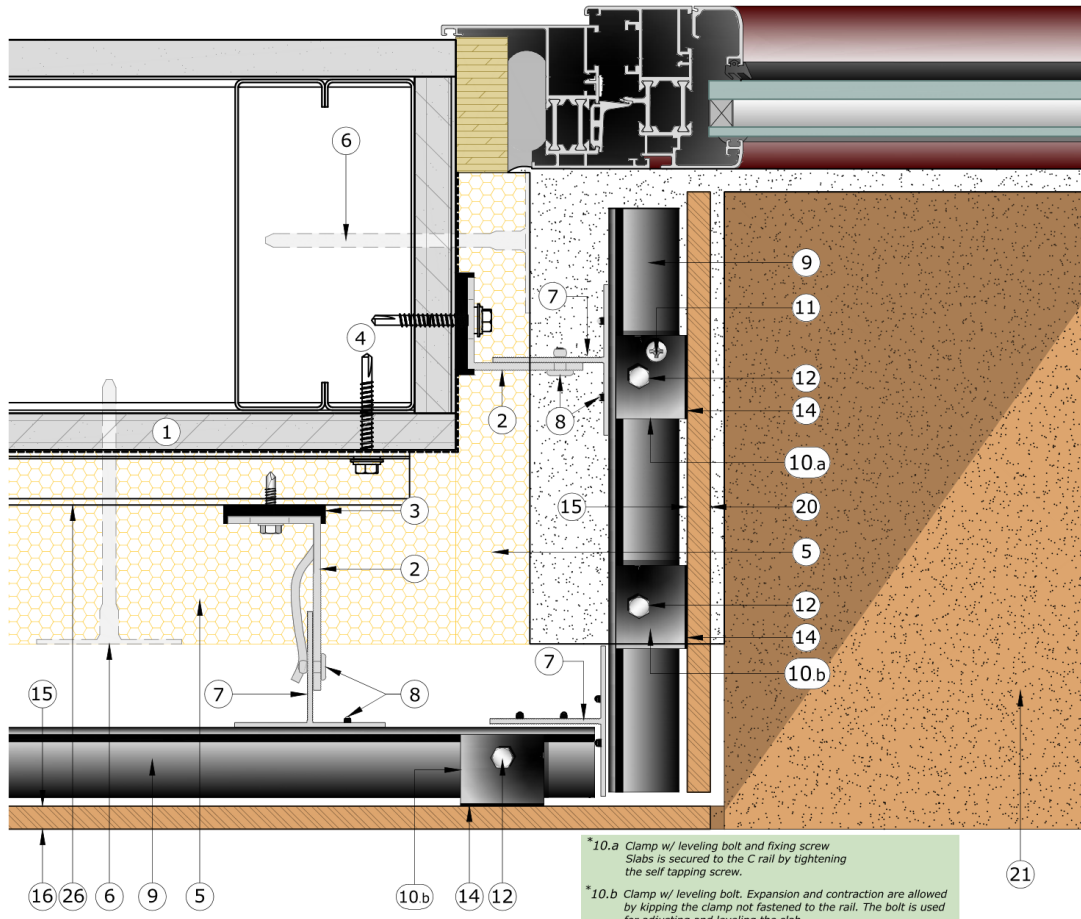
PLAN DETAIL
N.T.S.



LEGEND:

1.	Exterior sheathing on cold formed metal framing	14.	Compressible gasket
2.	L-bracket -Powder coated (black) Al 6060-T6	15.	Fiberglass safety mesh
3.	Thermal brake spacer	16.	Porcelain panel
4.	Wall anchors	17.	Brake metal jamb
5.	Continuous thermal insulation	18.	Brake metal sill
6.	Plastic anchor - to fasten thermal insulation to wall	19.	Brake metal head
7.	Vertical T-profile - Powder coated (black) Al 6060-T6	20.	Porcelain jamb
8.	Stainless steel or aluminum rivet	21.	Porcelain sill
9.	Horizontal rail C-profile - Powder coated (black) Al 6060-T6	22.	Porcelain head
10.*	Concealed Clamp - Powder coated (black) Al 6060-T6	23.	Water proofing
11.	Self tapping/fixing screw	24.	Micro-perforated aluminum grille
12.	Leveling bolt	25.	Metal coping
13.	"KEIL" concealed anchor	26.	Metal hat channel

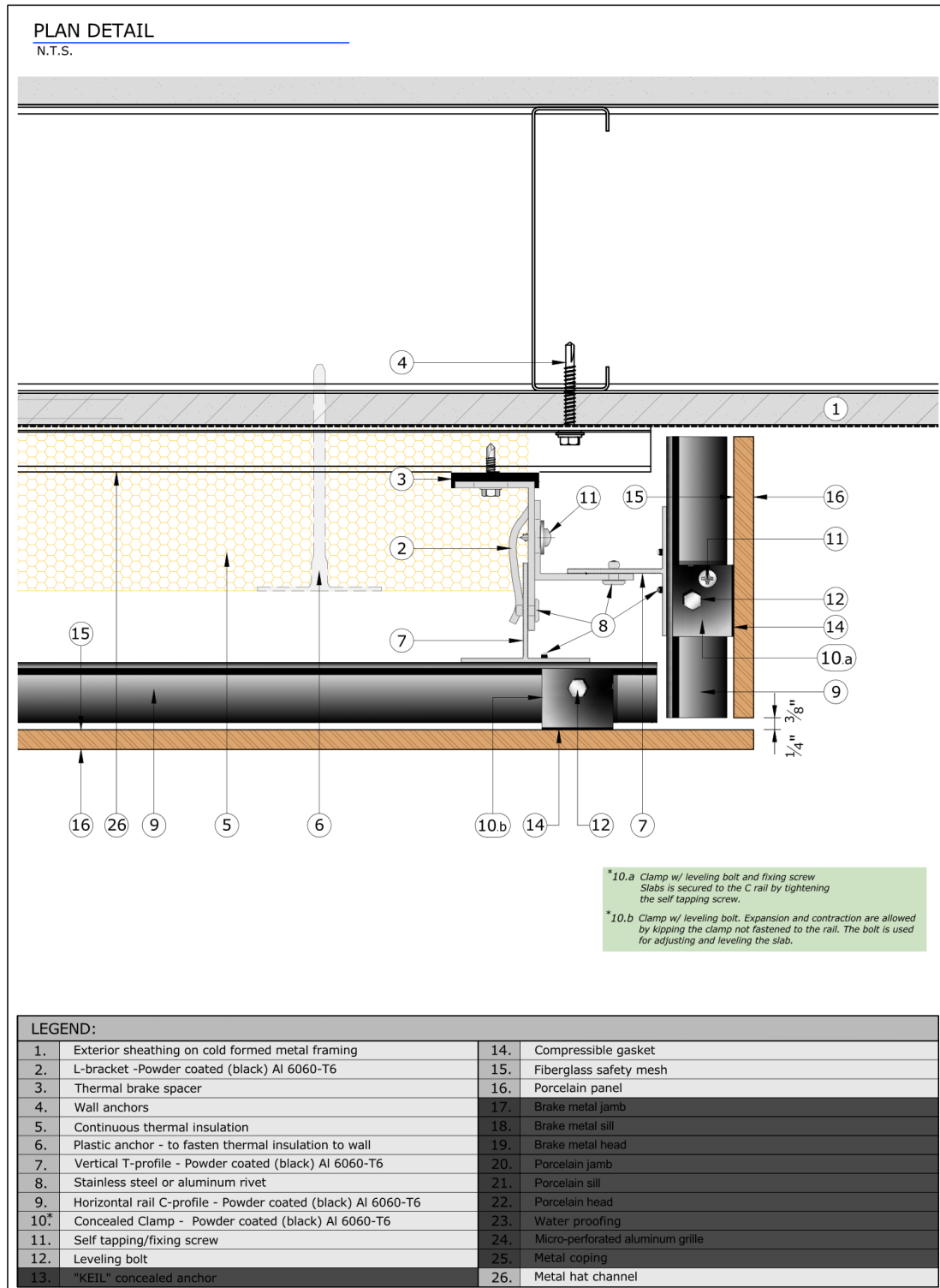
PLAN DETAIL
N.T.S.

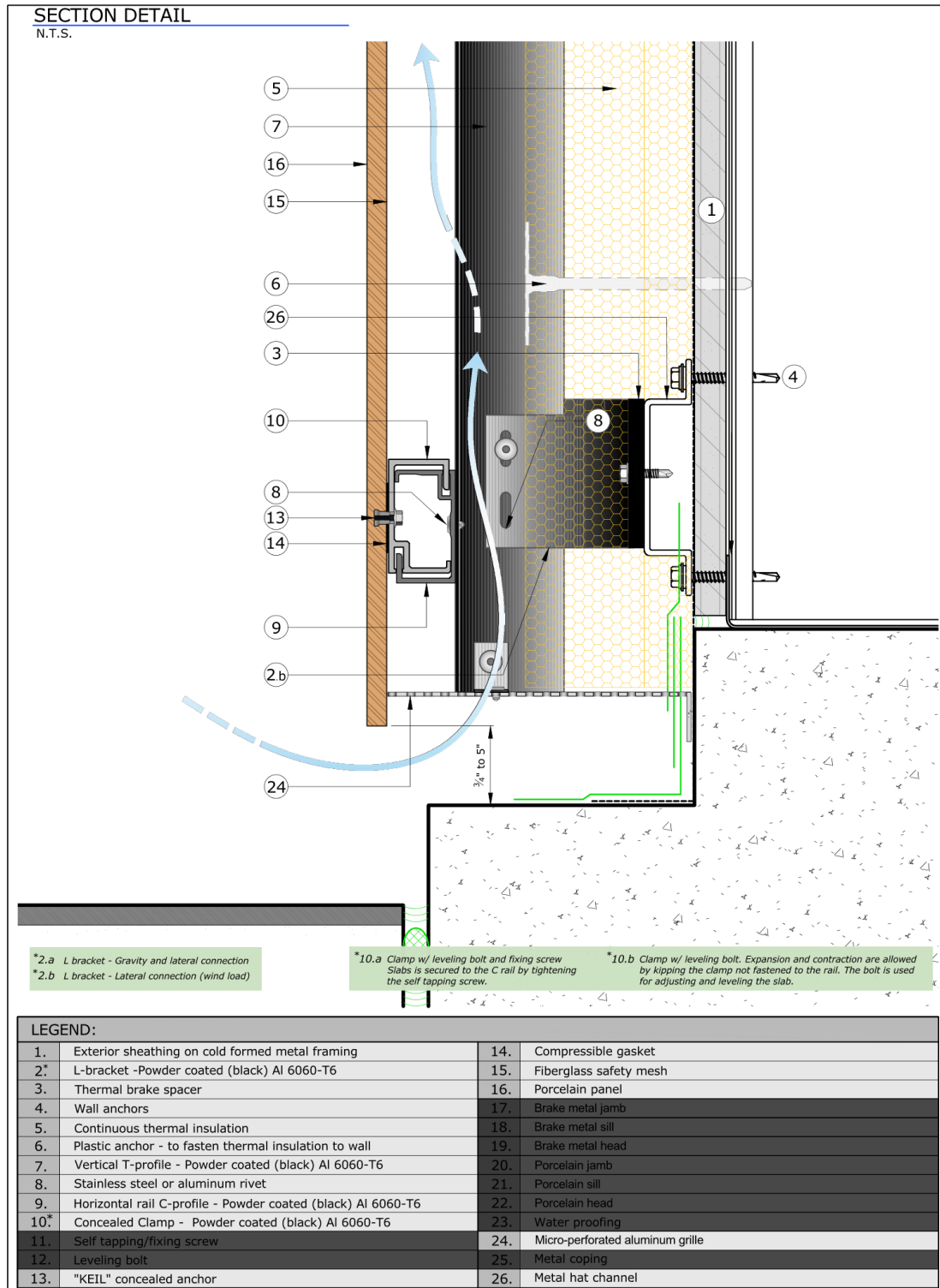


*10.a Clamp w/ leveling bolt and fixing screw
Slabs is secured to the C rail by tightening
the self tapping screw.

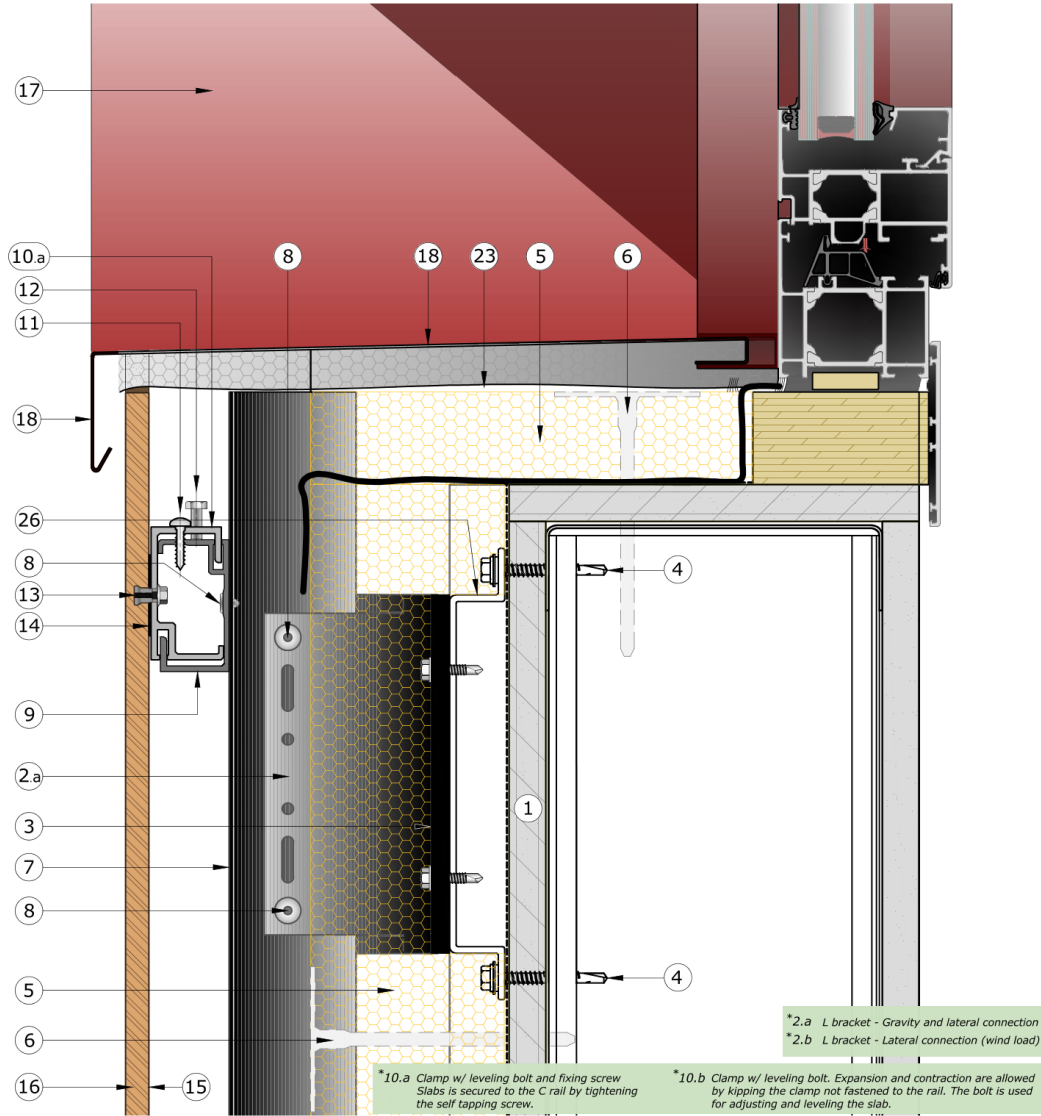
*10.b Clamp w/ leveling bolt. Expansion and contraction are allowed
by kipping the clamp not fastened to the rail. The bolt is used
for adjusting and leveling the slab.

LEGEND:	
1.	Exterior sheathing on cold formed metal framing
2.	L-bracket - Powder coated (black) Al 6060-T6
3.	Thermal brake spacer
4.	Wall anchors
5.	Continuous thermal insulation
6.	Plastic anchor - to fasten thermal insulation to wall
7.	Vertical T-profile - Powder coated (black) Al 6060-T6
8.	Stainless steel or aluminum rivet
9.	Horizontal rail C-profile - Powder coated (black) Al 6060-T6
10*	Concealed Clamp - Powder coated (black) Al 6060-T6
11.	Self tapping/fixing screw
12.	Leveling bolt
13.	"KEIL" concealed anchor
14.	Compressible gasket
15.	Fiberglass safety mesh
16.	Porcelain panel
17.	Brake metal jamb
18.	Brake metal sill
19.	Brake metal head
20.	Porcelain jamb
21.	Porcelain sill
22.	Porcelain head
23.	Water proofing
24.	Micro-perforated aluminum grille
25.	Metal coping
26.	Metal hat channel





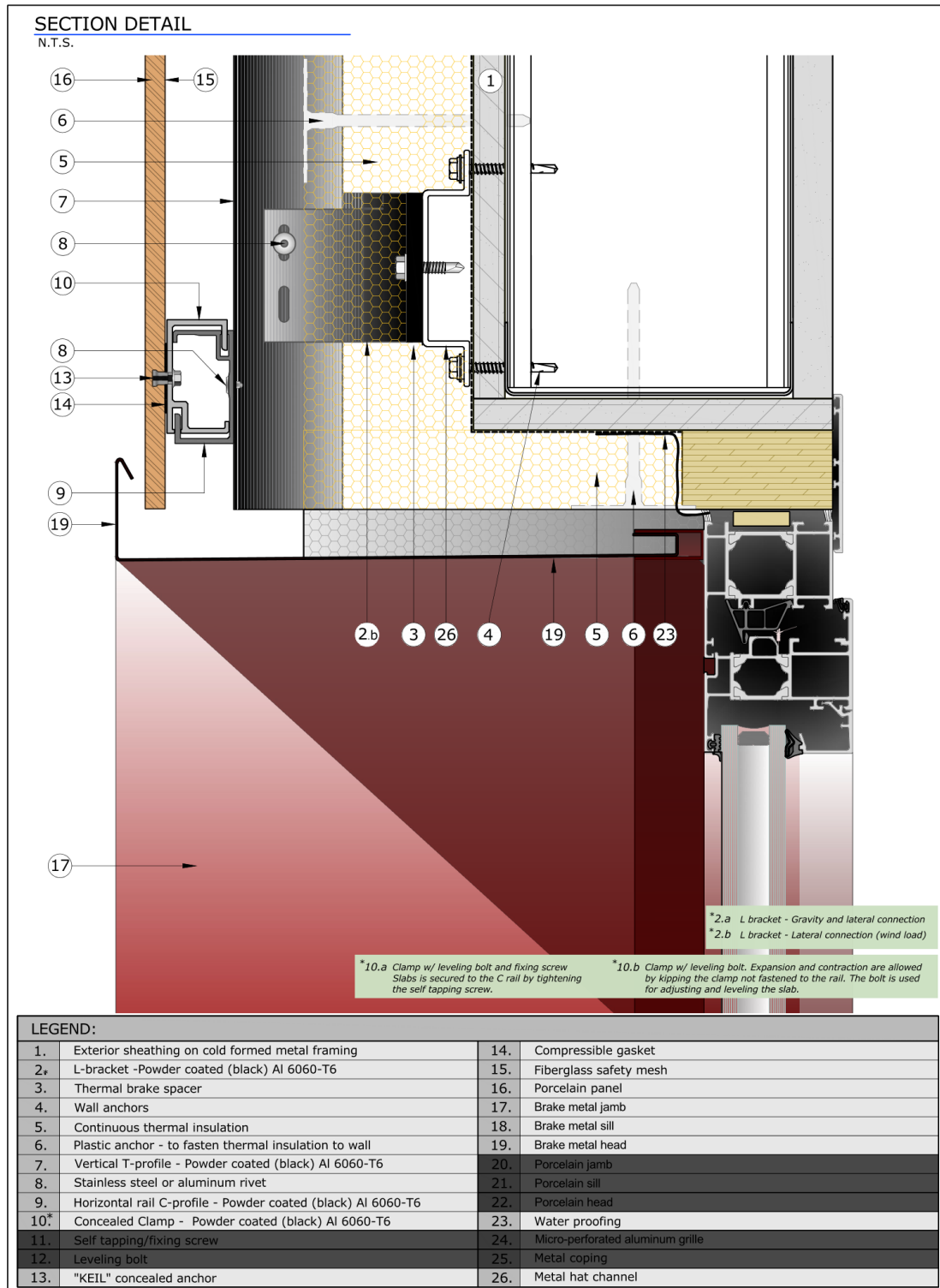
SECTION DETAIL
N.T.S.

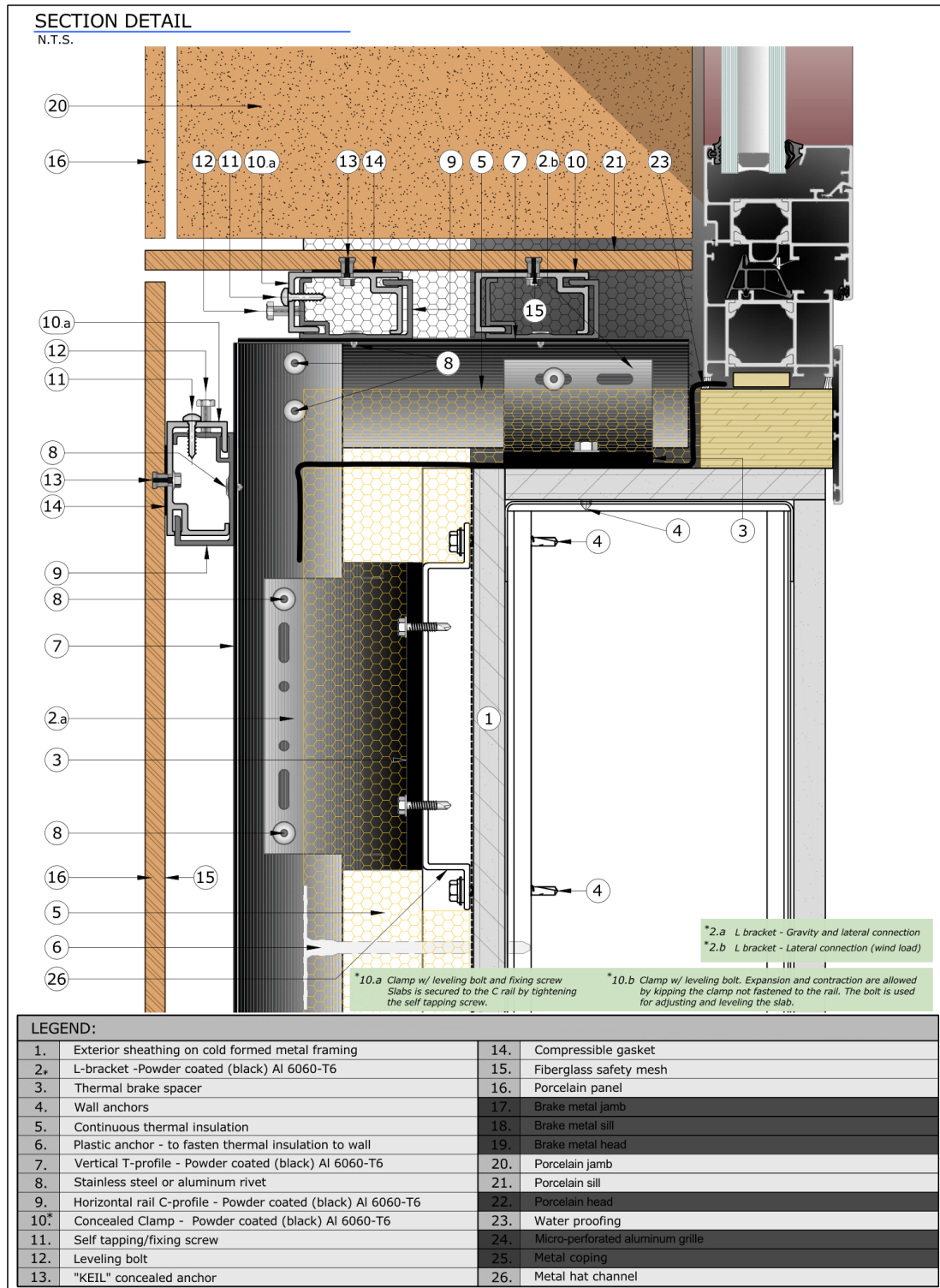


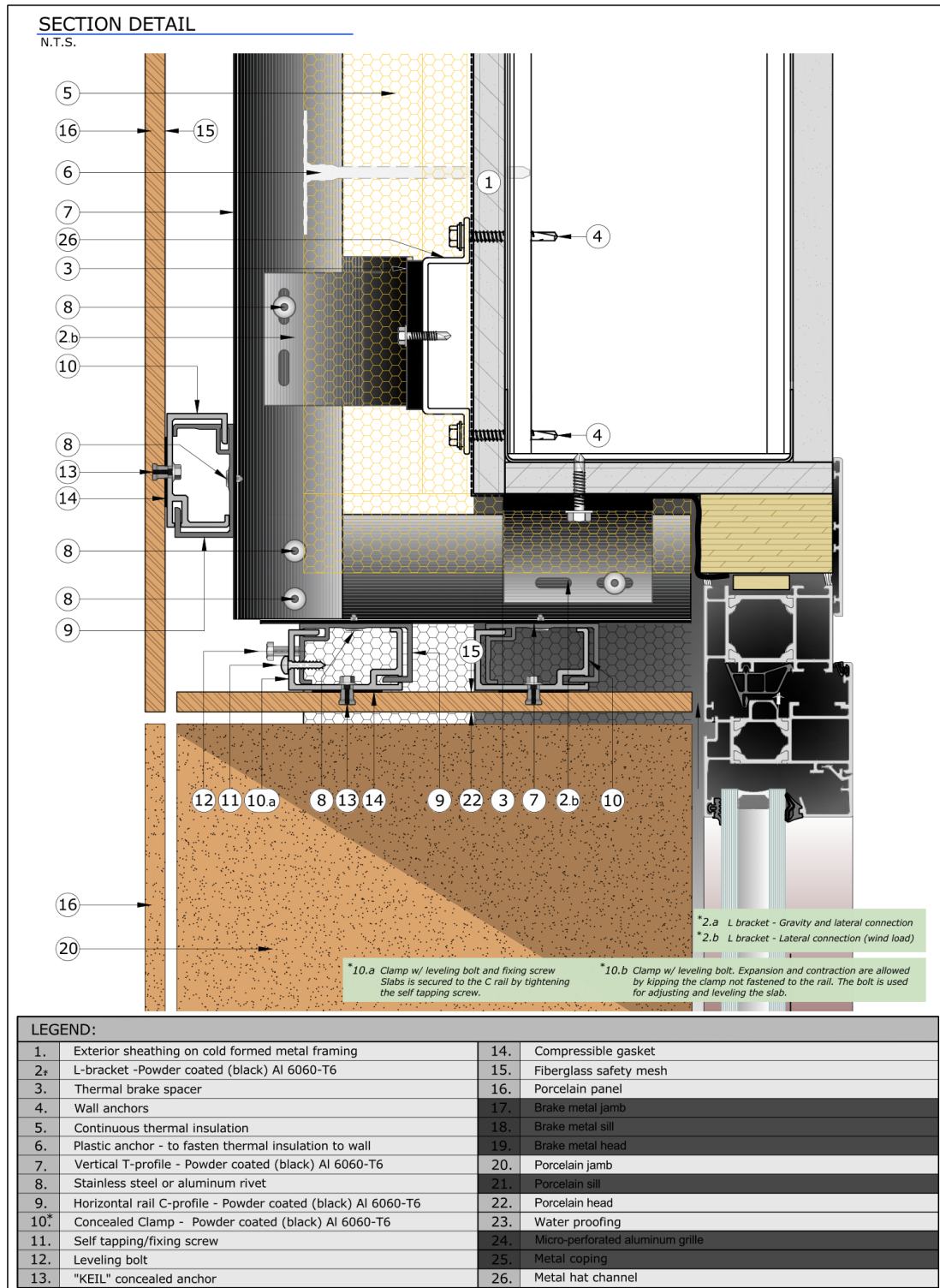
*2.a L bracket - Gravity and lateral connection
 *2.b L bracket - Lateral connection (wind load)
 *10.a Clamp w/ leveling bolt and fixing screw
 Slabs is secured to the C rail by tightening
 the self tapping screw.
 *10.b Clamp w/ leveling bolt. Expansion and contraction are allowed
 by kipping the clamp not fastened to the rail. The bolt is used
 for adjusting and leveling the slab.

LEGEND:

1.	Exterior sheathing on cold formed metal framing	14.	Compressible gasket
2.	L-bracket -Powder coated (black) Al 6060-T6	15.	Fiberglass safety mesh
3.	Thermal brake spacer	16.	Porcelain panel
4.	Wall anchors	17.	Brake metal jamb
5.	Continuous thermal insulation	18.	Brake metal sill
6.	Plastic anchor - to fasten thermal insulation to wall	19.	Brake metal head
7.	Vertical T-profile - Powder coated (black) Al 6060-T6	20.	Porcelain jamb
8.	Stainless steel or aluminum rivet	21.	Porcelain sill
9.	Horizontal rail C-profile - Powder coated (black) Al 6060-T6	22.	Porcelain head
10*	Concealed Clamp - Powder coated (black) Al 6060-T6	23.	Water proofing
11.	Self tapping/fixing screw	24.	Micro-perforated aluminum grille
12.	Leveling bolt	25.	Metal coping
13.	"KEIL" concealed anchor	26.	Metal hat channel



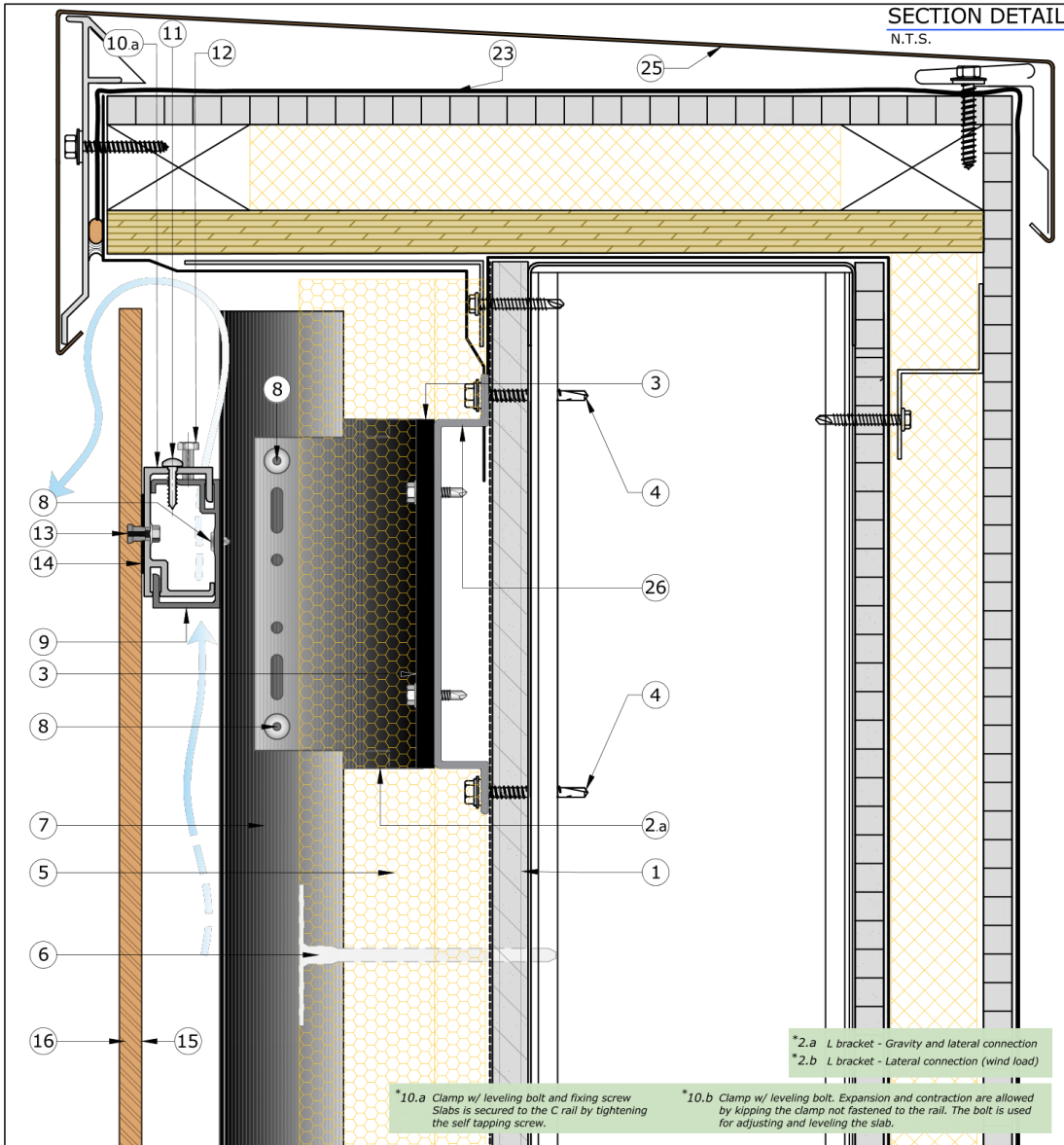




GHS - TYP. DETAIL AT COPING - METAL

GRANTECH

SECTION DETAIL
N.T.S.



*2.a L bracket - Gravity and lateral connection
*2.b L bracket - Lateral connection (wind load)

*10.a Clamp w/ leveling bolt and fixing screw
Slabs is secured to the C rail by tightening the self tapping screw.

*10.b Clamp w/ leveling bolt. Expansion and contraction are allowed by kipping the clamp not fastened to the rail. The bolt is used for adjusting and leveling the slab.

LEGEND:

1.	Exterior sheathing on cold formed metal framing	14.	Compressible gasket
2.	L-bracket -Powder coated (black) Al 6060-T6	15.	Fiberglass safety mesh
3.	Thermal brake spacer	16.	Porcelain panel
4.	Wall anchors	17.	Brake metal jamb
5.	Continuous thermal insulation	18.	Brake metal sill
6.	Plastic anchor - to fasten thermal insulation to wall	19.	Brake metal head
7.	Vertical T-profile - Powder coated (black) Al 6060-T6	20.	Porcelain jamb
8.	Stainless steel or aluminum rivet	21.	Porcelain sill
9.	Horizontal rail C-profile - Powder coated (black) Al 6060-T6	22.	Porcelain head
10.a	Concealed Clamp - Powder coated (black) Al 6060-T6	23.	Water proofing
11.	Self tapping/fixing screw	24.	Micro-perforated aluminum grille
12.	Leveling bolt	25.	Metal coping
13.	"KEIL" concealed anchor	26.	Metal hat channel

GHS

The information included in this catalogue is for reference only.

Please contact Granitech technical department at:
+1 3125062800 for more detailed documentation and technical questions.

GRANITECH

© 2007 - 2018 Granitech
314 W. Superior, suite 201
Chicago, IL 60654
P: +1 312 506 2800
Email: info@granitech.it

Appendix II

AIA Bronx Chapter 2022 Budget

January 2022

AMERICAN INSTITUTE OF ARCHITECTS

BRONX CHAPTER

PROJECTED BUDGET FOR THE YEAR 2022

EXPENSES

MEETING VENUE	\$ 2,000
INSURANCE	2,000
WEB SITE	350
EXPENSES FOR OFFICERS TO ATTEND CONVENTION.	700
AIA COMPLIANCE CONSULTANT.	2,200
ARCHITECTS COUNCIL.	400
AWARDS PROGRAM.	3,000
LEGAL.	4,000
MEMBERSHIP OUTREACH.	400
ACCOUNTING.	<u>400</u>
TOTAL PROJECTED EXPENSES.	\$15,450
PROJECTED INCOME BASED ON YEAR 2021.	\$16,500

THE END