

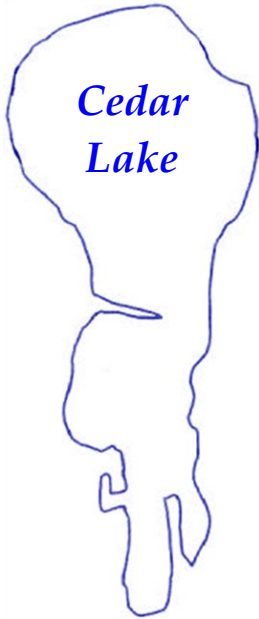


Cedar Lake Conservation Club

Maple Lake – Annandale, MN

July, 2014

President's Letter by Mike Hankee



In This Issue:

- Best day of the summer—CLCC Picnic and Music on the Water | page 2
- Natural Shoreline Restoration Tour July 19th | page 2
- Kids Don't Float | page 3
- July 4th Parade Winners | page 14
- Aquatic Invasive Species fear us and DNR grants received | page 4
- Don't forget your dues | page 11
- Walleye Stocking Fund—consider a donation for fingerlings | page 3
- Support local businesses who support CLCC (see ads inside)

I hope your summer is going well. Even with heavy rains and high water people are still enjoying the lake by tubing, skiing, kayaking and fishing. While enjoying these activities please consider a voluntary 300 ft. no wake as you take your rides around the lake. Please watch your depth finder as you travel and **try to stay in water depth 12 feet or deeper.** Anything less than this depth you may encounter Eurasian Water Milfoil. As you know this can spread to other parts of the lake if driven through so please be very careful where you travel. If you find yourself in a patch of Eurasian Water Milfoil simple exit the area, stop you motor and clean off the propeller and continue on.

In May we treated about 9 acres of Curley Leaf Pondweed. We plan to treat approximately 37 acres of Eurasian Water Milfoil the week of July 7th. Please see the Water Quality Article on page 4 for more information about these treatments.

Our fund raising for our **fall walleye stocking** is doing fairly well but has kind of slowed a bit. We are just over \$3,700 and want to reach the \$5,000 for the planned October Walleye Stocking. Please consider making a donation as I can attest to catching some really nice walleyes in our lake.

Many of you who cruise the lake will start seeing a roof covered structure with life jackets hanging off it at the Schroeder Park Boat Launch. This was just made and installed by CLCC volunteers. The CLCC partnered with Cabela's and Wright County Parks with a program called **Kids Don't**

Float. The idea is if you forgot a life jacket in your boat you can just borrow one from the station at no charge and then return. Special thanks go out to **Paul Schutte, Kathy Jonsrud, Mark Grimme, Glenn Baird and Dean Nicholson** who constructed and installed the Kids Don't Float Structure. See a picture of this structure on page 3.

Mark your calendar for two of our next upcoming events. **On July 19th** we will have a tour of at least four lakeshore restoration projects on our lake. The native plants should be in full bloom and this is a great way to see how beautiful these gardens look. You might just get hooked on this and hopefully start your own native shoreline restoration project. The **Annual Picnic and Music on the Water** is happening on **August 23rd** at True Friends (formerly Camp Courage). Please see additional information on both these events and all CLCC events in this newsletter.

Finally, I would like to thank all of the volunteers I have worked with over the past four years as I served as your vice president and president. I, along with Jean Skomoroh, Jim Martin and Gary Miron are going off the board this year in September after serving four year terms. I would also like to thank **all of the CLCC members** for their continued support of this organization and goals. You all have made a difference by paying your dues, giving to the various visionary funds and getting behind some tough projects that make a difference in the quality of lake life on Cedar.

See you on the lake! *Mike Hankee*

Stay abreast of breaking news - visit www.cedarlakecc.org for the latest updates.

Do you enjoy reading about the activities on the lake? This publication is sent to every Cedar Lake property owner. If you don't belong to CLCC, please consider joining to support this newsletter and other CLCC activities.

CLCC Picnic and Music on the Water Saturday, August 23rd

12:00 Lunch True Friends (Camp Courage) | 2:00 Music on the Sandbar

Please turn the page for more details!

CLCC Picnic and Music on the Water

Saturday August 23rd, 2014

CLCC is continuing the tradition of a great day on the lake filled with family fun, camaraderie, music, and lake activities. The CLCC Social Committee, led by Cathi Gabriel Westman, has put together another exciting afternoon for all ages. True Friends (formerly Camp Courage) has opened its lakefront facility again. From 12 noon until 1:30pm, Cottage Gourmets will serve a wonderful picnic lunch.



Games, raffles, lots of entertainment, information on CLCC activities, and great Cedar Lake merchandise sales will fill the time quickly. Then, everyone is invited to float on over to the sandbar, soak in the sun, and go dancing on the water.

"Midnight Radio," a popular local band, will perform on a barge until 6pm. This lakeside music fest is sponsored by Dingmann Marine.

Reservations are not required and guests are welcome.

If you have suggestions to make the event even better or wish to help out, contact Cathi at 651-253-2675.

CLCC Picnic and Music on the Water August 23rd, 2014

12 noon-1:30pm True Friends (Camp Courage)
Member Appreciation Lunch (Free for members)
8046 83rd St NW, Maple Lake MN 55358
Lakeside Dining Hall

Lunch Served by Cottage Gourmets; Fishing Contest Awards; Games, Raffles, Informative Booths, Cedar Lake Merchandise

Come by car or boat! The entrance to Camp Courage is on County Rd 7; limited space is available to beach your boat

2:00pm-6:00pm Cedar Lake Sandbar
"Midnight Radio" - Live Band Sponsored by Dingmann Marine; Bring Your Own Refreshments

Cost: Free to CLCC Members, Guests \$8 donation

No reservations required

Guests are warmly welcomed

Plan to relax, enjoy, and celebrate our lake community

Cedar Lake Shoreline Restoration Tour

Saturday, July 19th, 2014 9-11:30am | Starts at 8461 76th Street (Hankee's)

Over the past few years, several property owners on Cedar Lake have been installing native shoreline buffers. By mid-summer they are usually at their blooming peak. Want to see them close-up and learn first-hand about the process? A tour of 4 shoreline projects around Cedar Lake will showcase a variety of terrains, stages of development or specialized conditions. Come with your questions and see options that might work for your property.

- ◇ Tour begins, 9am at the Hankee's, 8461 76th Street. Coffee and treats provided. We will then drive to the next site.
- ◇ A native plant expert from Natural Shoreline Technologies will accompany us.
- ◇ Also learn about: native plantings with frost heaving, repelling geese from your shore, and planting a monarch butterfly garden.
- ◇ Light lunch and door prizes at final site.



This event is free to all, but advanced sign-up is most appreciated. If you plan on attending, please respond to Chery Wold (chjefu@charter.net or 763-241-0199) TODAY!

Kids Don't Float New CLCC Project

Lifejacket Loaner Station at Schroeder Park

CLCC is pleased to announce a new lifejacket loaner station at Schroeder Park (north side of lake). CLCC took the lead to sponsor the station and partnered with Wright County Parks and Cabela's for the project. The life jacket station is near the Schroeder Park boat landing. The station provides an opportunity for any one using the lake who finds they don't have enough life jackets to borrow a life jacket at no cost and then return it to the station. There are two different sizes of kid's jackets and several adult jackets. The station was finished the end of June. The first day it was up the campground manager reported to us that at one time 10 jackets were being used.

We are delighted to provide this service to our lake community. The Board of Directors has made a two year commitment for the start-up and maintenance.



CLCC Members (from the left) Mark Grimme, Glenn Baird, and Dean Nicholson installing the station

*"I got a lot of compliments this weekend on the life jacket station by the lake. I checked them last night and all had been returned. It was an awesome weekend here. Hope you enjoyed yours. Thanks for all you do."
Deb, Schroeder Park Campground Manager, July 6th, 2014*

2014 CLCC Walleye Stocking Fund

\$5,000 Goal | At \$3,723

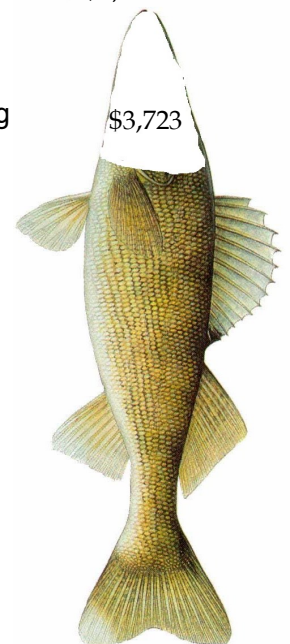
Hats off to you that have donated to the Walleye Stocking Fund. We Thank You!! Your Fund currently stands at \$3,723. This is great as we are headed to a goal of \$5,000 by October 1st. \$5,000 usually buys us approximately 5,000 fingerlings, depending on the size. We will be having a Walleye Raffle at our Picnic on August 23rd. If you have any raffle items for the this effort, please contact Paul Schutte (pschutte54@gmail.com) by August 1st.

The stocking of the walleye fingerlings usually takes place the last few weeks in October. If you would like to be part of the release please let Paul Schutte know(pschutte54@gmail.com). A day or two notice is usually received before they are delivered to the lake.

Purchase a Pound of Walleye Fingerlings!

Please participate in **Purchase a Pound of Walleyes** to support the CLCC Walleye Stocking Program. Each pound costs \$36. *Sign up to buy a pound or two or three or whatever your lures desire.* Use the form on the back cover of this newsletter or donate online through CLCC website. Go to: www.cedarlakeecc.org

\$5,000 Goal

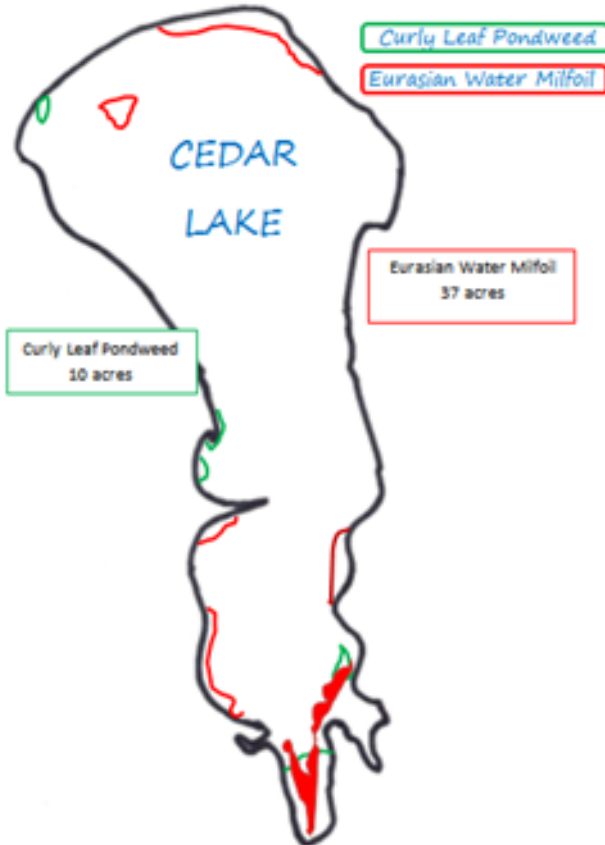


WATER QUALITY COMMITTEE

by Kathy Jonsrud

2014 Aquatic Invasive Species (AIS) Control | DNR Grants Received

2014 AQUATIC INVASIVE SPECIES TREATMENT



As we expected, we did treat more Curly Leaf Pondweed (CLP) and Eurasian Water Milfoil (EWM) this year:

CLP	9 acres	Cost	\$2,786*
EWM	37 acres	Cost	\$18,400

Though this is more than we treated last year, we are still well within the costs of the CRWD project budget and we have received DNR grants. Orv Jonsrud completed the grant applications and we have already received \$1,000 for our CLP control and expect to receive about \$3,140 for our EWM control. This is our third year in a row of receiving DNR AIS grants. Hats off to Orv for his careful attention to detail to get the grant applications completed.

The map to the left shows the approximate treatment areas.

The CLP was treated on May 21st. We had a perfect day for treatment and the results were excellent.

Our EWM was very aggressive this year. We noticed in the spring that the patches identified last fall were vigorous. We worked with our treatment vendor and DNR to amend our original permit to increase the amount treated. The original permit was for 32 acres and the amended permit for 37 acres. We also decided to use a granular product—triclopyr—for the treatment. Though slightly more expensive, the granular treatment appears to be the best choice for our situation as the granules stay in contact longer. The EWM treatment is scheduled for the week of July 7th—Mother Nature willing. We had hoped to treat before the July 4th holiday, but between the rain and windy conditions, we had to delay the treatment.

Due to the aggressiveness and larger infestation of EWM, the Water Quality Committee is getting bids to conduct an extra independent mapping this fall. We hope to combine a traditional mapping with a new technology that uses sonar to provide information about the density of the infestation, and to identify new areas of invasives. Traditional mapping detects the presence of the invasive, and sonar provides an “eyes under the water” look at how thick the patch is. This additional mapping will put us in the very best position possible to treat EWM in 2015.

Looking at the big picture, we have attained our goal regarding the control of CLP to keep it under 10 acres. However, our battle with EWM is just beginning. Our vendor did comment that he was surprised we “didn’t have more Eurasian by now”. Everyone’s vigilance is important:

- ◇ Learn how to identify EWM and check out the AIS Hotspot on the website www.cedarlakecc.org.
- ◇ When cruising the lake, try to stay in at least 12 feet of water; EWM usually doesn’t grow at that depth.
- ◇ If you find yourself in EWM, get to the edge and then clean off your prop to help reduce spreading the fragments.
- ◇ Always inspect, drain, and dry your watercraft when transporting.

*Reflects vendor credit of \$4,480 from 2013. Additionally, DNR allowed higher concentration of chemical in certain areas from original bid.

Wright County Program to Monitor Zebra Mussels Begins

The Wright County Coalition of Lakes has started a new program to monitor Zebra Mussels. No infestations are known in Wright County, and we hope to keep it that way. Zebra Mussels are invasive, with the potential to filter large quantities of plankton from a lake and altering its delicate ecosystem. The Wright County program is being led by Kathy Jonsrud from Cedar. Sixteen Wright County lakes have joined the program. On Cedar, Karl Leslie and Bob Norman are doing the monitoring. The monitoring units were provided no charge by St. Cloud State University students as part of their senior capstone project.



FISH AND WILDLIFE COMMITTEE

by Paul Schutte and Cheryl Wold

Successful Native Plant Sale

Despite the rain and cool temperatures, our recent **Native Plant Sale** on June 6th was a resounding success! Rob Langer from Natural Shore Technologies assisted customers in finding just the right native plant for their site and purpose. We were thrilled to welcome new customers to this event, and welcomed back many previous customers who were expanding their plantings. Native plants are beneficial to our lake water quality since their massive root systems filter and consume water run-off before entering the lake. They are also beneficial to birds, pollinating insects and butterflies.



CLCC members and lake neighbors (from the left) Bruce and Laurie Dvorak and Dave Nash find wonderful new native plants.

**A big thanks to Rob Langer,
Bill Arendt and Mary Ellen
Wells for their help with this
event!**

Our Loons

It looks like it has been a tough year for all nesting birds this year including our loons. The high water, black flies and the heavy rain, have all contributed to low nesting throughout MN. The pair that nested on our platform near the sand bar were able to hatch out one healthy chick. Without the platform, a successful nest would not have been possible, as the sand bar was underwater most of the Spring. At the time of this writing that is the only pair that I know that was successful this year on Cedar Lake. Again, a reminder to keep your distance from this family of loons and other wildlife as they raise their families.

DNR Fisheries Survey on Cedar

The DNR Fisheries plans a lake fish survey on Cedar Lake the week of July 7th. This survey will now take place every 5 years and results published on the DNR Website.

Stewardship at the Lake

We all like to come to the cabin and have all the benefits of great lake living. Wow, the joys of being on the lake...but it doesn't happen without people being involved, a little energy and some work. Whether it be planting some native plants, putting in a rain garden, releasing some of those fish, being a courteous boater, taking kids fishing, putting up a bird house, attacking some of those invasive species, or by being part of the Lake Board or a Committee.

Sometimes we need to remind ourselves it is not all about taking, it's about giving back as we go through life. By just getting engaged in a project you will make a difference. Then the next day you can wake up to a paradise again, only it being better place to be, and you can feel good about what you have done.

Get To Know The 2014 CLCC Board!

Board Member	Start	End	E-Mail	Telephone
Glenn Baird	Sept 2013	Sept 2017	glennabaird@gmail.com	612-599-4639
Orv Jonsrud	Sept 2013	Sept 2017	ojonsrud@yahoo.com	320-274-2166
Bill Arendt	Sept 2013	Sept 2017	wfa12345@aol.com	320-274-2422
Jim Martin	Aug 2010	Sept 2014	orvandjudy1@gmail.com	320-274-5730
Gary Miron	Aug 2010	Sept 2014	miron72@comcast.net	763-425-0904
Jean Skomoroh	Aug 2010	Sept 2014	jeaned@lakedalelink.net	320-274-7155
Mike Hankee	Aug 2010	Sept 2014	mlhankee@lakedalelink.net	651-503-4189
Arlan Daniel	Aug 2011	Sept 2015	arlandaniel@yahoo.com	952-237-6665
Cathy Campbell	Aug 2011	Sept 2015	cathylc@mac.com	952-831-3257
Cathi Gabriel-Westman	Aug 2012	Sept 2016	cglawoffice@gmail.com	651-253-2675
Diane Salls	Sept 2012	Sept 2016	dsalls40@yahoo.com	952-857-9114
Bobby Ebert	Sept 2012	Sept 2016	Bobby.Ebert@northstarfinancial.com	651-278-2257
Christa Lane-Larsen*	Sept 2013	Sept 2014	gopherines@citescape.com	612-940-1080
Liz Baird**	Sept 2012	Sept 2014	lizbaird22@gmail.com	612-599-4128

*Non Board member, elected Secretary

**Non Board member, elected Treasurer

Remaining 2014 Board of Director Meeting Dates: September 27 (includes the Annual Membership Meeting), November 8. Meetings begin at 9am at the Corinna Township Hall.

CLCC board meetings are open to members and include an open forum for new business. The board welcomes and encourages member attendance and participation.

Where can you help? Please consider joining in!

The CLCC is a very active lake association, fostering fellowship among the lake residents while promoting and protecting the wildlife and natural beauty of Cedar Lake. CLCC is a 501(c)(3) tax exempt organization and no members, directors or officers receive any compensation. The success of CLCC depends on volunteer efforts, so please join in. Make new friends and have fun as well!

Committee	Chair	Contact Information
Water Quality Protect & improve water quality & beneficial vegetation	Kathy Jonsrud	kjonsrud@yahoo.com
Fish and Wildlife Conservation Preserve & protect beneficial wildlife, fish, & the natural beauty of Cedar Lake	Paul Schutte	pschutte54@hotmail.com
Membership and Quality Lake Life Encourage membership & involvement	Bill Arendt	Wfa12345@aol.com
Social Promote fellowship among lake residents & friends of Cedar Lake	Arlan Daniel Cathi G Westman	arlandaniel@yahoo.com cglawoffice@gmail.com
Merchandising Select, manage & sell items that promote Cedar Lake	Cathy Campbell	cathylc@mac.com
Nominating Provide Board of Director nominations to the membership at the Annual Meeting	Carter Diers	carterdiers@yahoo.com

Support Those Who Support CLCC

Cottage Gourmets
food for the events in your life

Barbara Westman

Website: cottagegourmets.com

Phone: 320-493-0416

barb.westman@gmail.com



Sterling Silver, White & Yellow Gold Customize with a Diamond

at Miller's Jewelry

86 Oak Avenue N, Annandale 274-5313



Petty Brothers Meats, Inc.



"Your Old-Fashioned
Meat Market"

Quality Fresh Meats



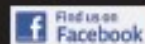
Award Winning Sausages

Wild Game Processing

Annandale

320-274-5615

www.pettybrothers.com



Petty Brothers Meats Inc.

Support Those who Support CLCC

Let Us Exceed Your Expectations!



ANCHOR DOCK & LIFT

www.anchor-dock.com

World Class Products. Exceptional Service

DOCKS | LIFTS | RECREATION | RENTAL

960 Elm Street E, Hwy 55 | Annandale (320) 274-6500

**Your Hometown Realtors
with World-Wide Presence**

It's our business at RE/MAX Integrity to find the perfect property for you. So, when you're looking for a lake home, cabin, hobby farm, or vacant land to build your dream home, you've come to the right place. Call or email us today.



RE/MAX[®]
Integrity

270 Elm Street East,
Annandale, MN 55302 | 320-274-2233

RemaxGo.com



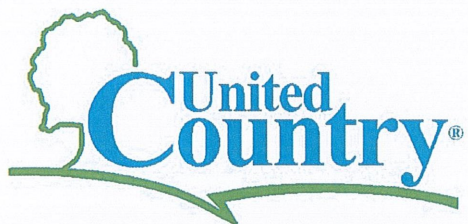
Call or visit your local dealer today.

Maple Lake Lumber Co.
120 Oak Avenue S.
Maple Lake, MN 55358
320-963-3612

MARVIN
Windows and Doors

Built around you.™

Support Those Who Support CLCC



Premier Real Estate

140 W Elm St
Annandale, MN 55302

(320) 274-1341

ucpre.com

From the Cabin to the Country

We have you Covered.







WE NOW OFFER PROPERTY MANAGEMENT SERVICES!
CALL US TODAY FOR FREE LAWN MOWING AND SNOW PLOWING ESTIMATES!

320-236-3625

SALES - SERVICE PARTS - ACCESSORIES
 14882 STATE HWY 55, SOUTH HAVEN, MN 55382



Paul Manuel



LAKE CENTRAL



John Volden

INSURANCE SERVICES

INVESTMENTS

Securities and Insurance offered through Cetera Investment Services LLC, member FINRA/SIPC. Investments are not FDIC Insured-Not a Deposit-Not Insured by any Federal Government Agency-May Lose Value-Not Financial Institution Guaranteed.

Auto	IRAs
Home	401Ks
Life / Health	Mutual Funds
Business	

www.mylakecentral.com



Maple Lake 320-963-3163 Annandale 320-274-8216 Clearwater 320-558-2480

CLCC MEMBERSHIP COMMITTEE

By Bill Arendt, CLCC Vice-President

Time to Pay 2014 Dues

Thanks to all the members who have paid their dues. Current paid membership is 148, which is typical for this time of year. We had a record year for membership in 2013 of 192 members. We would love to hit that magic 200 mark this year. We need your support to maintain the CLCC as a vibrant lake association. Please take a moment to pay your dues before it slips your mind. You can use the form on the back of this newsletter, or pay on-line at www.cedarlakecc.org.

CLCC counts on the active support of its members to help make a difference on the Lake.

Please take a moment right now to pay your dues before it slips your mind.

Newsletter and Website Services

The CLCC newsletter is published three times a year (April, July & November). A copy is also posted on our website for future reference. Kathy Jonsrud is the editor of the newsletter, which is one of the best lake association newsletters in the Wright County area. Mark Trostad is in charge of the website and e-mail notifications. Over the past several weeks, we have sent emails regarding CLCC activities—are you getting the emails? If not, please let us know your correct email. We can support up to two emails per family. Updates to emails (and other directory information) should be sent to Liz Baird, lizbaird22@gmail.com. Thanks Kathy, Liz, and Mark for your efforts.

CLCC Fishing Contest

Cash Prizes and Fun for All

The CLCC Fishing Contest is a delightful and time honored tradition on our lake.

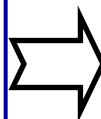
- ◇ Bring your lunker for weigh-in at Nicholson's 8979 Iresfeld 320-274-3516 (near Schroeder Park)
- ◇ Usual prize categories are for walleye, bass, crappie, and sunfish—but judges are impressed by all species
- ◇ Cash prizes awarded at the Annual Picnic on August 23rd
- ◇ Contest runs to August 16th



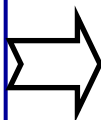
Ross Pope
2013 1st Place Walleye

JOIN THE FUN!

TWO EASY WAYS TO PAY DUES



Fill out the dues form on the last page of this newsletter and mail in



On-line payment at www.cedarlakecc.org
(see link on left hand side)

Member Annual Meeting September 27th | 9am | Corinna Town Hall

Mark your calendars for September 27th, 9am at the Corinna Town Hall (9801 Ireland Av NW) for the CLCC Annual Meeting. Catch up on the year's CLCC activities, elect new directors, and have a cup of coffee with lake neighbors.

CLCC Treasurer's Report

Fund Balances at 06/30/2014

<u>FUNDS</u>	<u>AMOUNT</u>
Water Quality	\$ 24,834.41
Walleye Stocking	3,723.69
General CLCC	8,180.78
Dave Larsen Visionary	<u>3,264.50</u>
TOTAL	\$ 40,003.38

Thanks to Liz Baird —Treasurer of CLCC. Accurate and timely financial recordings are critical to maintain the trust and confidence of members. An outside financial review is performed every two years to ensure that funds and transactions are accurate.

Support Those Who Support CLCC

Maple Lake Area:
400 State Hwy 55 NW
Maple Lake, MN 55358
Ph: 320.963.2178

Metro Area:
4700 Osseo Rd
Minneapolis, MN 55430
Ph: 612.588.4000



Lawn Sprinkler Design, Installation and Service

www.carefreelawnmn.com

info@carefreesprinklers.com

We Love Marketing.

Get to know us, Cedar Lake!



Annandale Office 720 Elm St. E (320) 274-5737
Maple Lake Office 501 Maple Ave. N (320) 963-2088

Find us on:



320-274-GIFT

FINE GIFTS & GREAT FINDS

Jim King, Owner
atg@lakedalelink.net

10 Oak Ave N Annandale, MN 55302
www.allthingsgoodmn.com

Support Those Who Support CLCC



Dingmann
MARINE
AND MORE LLC
Service & Repair

John Dingmann
320-274-8688

Fax:
320-274-8680

Email:
dmarine@lakedalelink.net

1100 Business Boulevard
In the Annandale Business Park
East side of Annandale off of Hwy. 55

We Create **Outdoor**
DREAMS



Meet with one of our Landscaping Experts to create a plan that will transform your outdoor space from simply functional to Truly Exceptional!

Backyard Reflections
We Create Outdoor Dreams

320-274-6336
www.backyardmn.com

Lake Property Landscaping Specialist

QUALITY Custom Built Homes
Remodeling • Additions • Cabinets

FREE Estimates
612-685-5169
www.dearingconstruction.com

MN Lic# BC136502
Jim Dearing, General Contractor
jim@dearingconstruction.com



Dearing Construction, Inc.

July 4th Parade All are Winners!

What a wonderful day! Though it was a bit windy, that didn't diminish the fun with a very good turn out for the parade. Many docks also displayed a patriotic spirit. The judges had an extra hard job this year!



Best Dock | Leslie Kreutter and Mark Trostad with music

*Born down in a resort town | Loved Cedar Lake since I hit the ground
Learned how to swim, how to ski and fish | Best kind of life you could ever wish
Celebrate the 4th of July | And watch all the boats go by.
Got things to do and trips to take | But always come back to Cedar Lake
Born in the U.S.A. I was born in the U.S.A.
I was born in the U.S.A. | Born in the U.S.A.*



Most Patriotic | Kotzer Family



Most Enthusiastic | Chris and Scott Nelson Family Dock



**Most Creative | Bakken Family
"Cedar Lake Prom Night"**

CEDAR LAKE MERCHANDISE

By Cathy Campbell

We will be at the Cedar Lake Conservation Club Annual Picnic on August 23rd with clothing, towels, sweatshirts, vests, chambray shirts and t-shirts, in a range of sizes. There will also be a selection of mugs, glassware, plastic wine glasses, all with the Cedar Lake logo. If you know you would like an item in a specific size and color *please call me* and I can order most things in many more colors and sizes than we stock and the turnaround time is *fast!*

The new t-shirt design in pink in youth and women sizes that is embroidered with a flower and "Cedar Lake Girl" is a hit! These can be ordered in any size and color. The Cedar Lake coolers are very popular and just the right size for all kinds of fun.

Contact Cathy Campbell @ 952-831-3257 or cathylc@mac.com



CLCC EVENTS – MARK YOUR CALENDAR

CALENDAR OF REMAINING EVENTS 2014

July 19 th	Native Shoreline Restoration Tour	9-11:30am Start at Hankee residence 8461 76 th Street
August 16 th	End of fishing contest	Weigh your fish with Dean and Kathy Nicholson 8979 Iresfeld 320-274-3516
August 23 rd	Annual Picnic and Music on the Water	Picnic 12-1:30pm True Friends (formerly Camp Courage) Music on the Water 2 to 6pm Sandbar
September 27 th	Annual Member Meeting and Board of Director's Meeting	All welcome! 9am Corinna Town Hall 9801 Ireland Ave NW
November 8 th	Board of Director's Meeting	All welcome! 9am Corinna Town Hall 9801 Ireland Ave NW

Enhancements to Project PO6 Move Forward

In September of 2013, the Clearwater River Watershed District (CRWD) Board of Managers approved two major enhancements to our existing PO6 project. Project PO6 was started in 2006 to reduce phosphorus and carp population in Cedar Lake (check out www.crwd.org for more details about PO6).

- ◇ The two new projects will temporarily “slow down” a portion of the runoff during rain events and reduce the amount of phosphorus coming into Cedar.
- ◇ The projects are located just south of Cedar (near Hwy 55) and the other is east of Swartout Lake.
- ◇ The necessary authorizations and DNR permits have been secured.
- ◇ Construction south of Cedar is expected to begin late in 2014. The project east of Swartout will start in 2015.
- ◇ CRWD received a large Legacy Fund grant of \$277,900 for the project. This was a huge positive for the feasibility of the project. The total cost of the projects may not exceed \$554,000.
- ◇ The assessment to a Cedar Lake resident was \$500. There is an option to pay the assessment over multiple years.
- ◇ CLCC engaged deeply to evaluate and support the projects.
- ◇ CLCC contributed \$10,000 from the Water Quality Fund towards the projects.

300 ft No-Wake on Cedar

5/22/2014 through 6/12/2014

On Cedar we are lucky to have fairly stable water levels. The water levels are regularly monitored by CLCC using a DNR gauge on CTY Road 6. Several years ago, we did work with Wright County to establish a permanent ordinance for a 300 ft no-wake based on water level. The county and the Sheriff's office declared the 300-ft no-wake on May 22nd, and then the restriction expired on June 12, based on lower water levels. The level almost reached the 300 ft no-wake level later in June, but then did back down. The water still remains high and we do ask for a voluntary 300 ft no-wake.

Cedar Aquatic Invasive Species Inspections (AIS) and Signage

Bobby Ebert serves on the Board of Directors and the Water Quality Committee. Bobby has worked hard and delivered results that really ups the ante on our AIS signage and Inspection Strategy.

- ◇ Larger AIS Postings/additional signage at CR 6 and Schroeder. New AIS signage at Wurm's landing, which was installed by Corinna Township.
- ◇ In collaboration with Schroeder Park, manned AIS inspection and education at the Schroeder Park landing for most Saturdays during the season. This is our second year of providing these inspections. Bobby has worked with Marc Mattice, Wright County Parks Administrator, for this valuable service.
- ◇ Standard DNR AIS Inspections at the CTY RD 6 landing is scheduled for 60 hours. We have had inspections on Fridays and Saturdays this year.

Email From Out of the Blue...Remembering Cedar

So nice to see a website like this. I don't have a place on Cedar Lake, but my grandparents did many years ago, and I spent all my summers on that lake while growing up – in the 60s and 70s. Very familiar with that lake.

*So many priceless memories, you can't even imagine – what a special place!!!
So happy to see this lake being preserved and taken care of, as it was, and always will be, such a very special part of me. I hope to get back there someday again to see it.*

CLCC
P.O.Box 192
Annandale, MN 55302

PRSR STD
US POSTAGE
PAID
BUFFALO, MN
PERMIT NO. 76

~~ Pay 2014 Dues and Consider "Adding a Bit More" ~~
~~ Donate to the Walleye Stocking Fund ~~

CLCC needs your support. Annual dues to CLCC are \$25, based on the calendar year, and can be paid by check with the form below or electronically on-line. Visit the CLCC website (www.cedarlakeecc.org) and click on the "Donate" tab under "Dues" and the "Donate" tab under "Visionary" to make your contributions.

CLCC is a 501(c)(3) tax-exempt organization, so dues and contributions are tax deductible.



2014 Dues Payment: \$25.00

YES! I can give a bit more (circle desired fund) : _____
Walleye Stocking Fund Water Quality General

Walleye Stocking Fund (pound of fingerlings is \$36) : _____

TOTAL: _____

Name: _____

Home Address: _____

Lake Address: _____

Preferred Phone: _____ Email: _____

Please include this form and make checks payable to: Cedar Lake Conservation Club or CLCC.

Mail to: CLCC, PO Box 192, Annandale, MN 55302