

# Cedar Lake Conservation Club

Maple Lake – Annandale, MN

April 2016

## President's Letter by Bill Arendt

wfa12345@aol.com | 320-274-2422

This year, spring arrived in March and Cedar Lake's ice out was on March 16<sup>th</sup>. This was the 2<sup>nd</sup> earliest ice out since we began to keep records in 1955. The earliest ice out date was March 14<sup>th</sup>, 1988. During the last week of March and first week of April, many docks and lifts were installed. Then, colder weather came in and very few boats were launched. However, it felt good to see flowing water again. Wood ducks and mergansers also came back early, looking for nesting boxes.

This will be the first year that the two new CRWD projects for Cedar Lake will be in place (south side of Cedar by HWY 55 and east side of Swartout). These projects will reduce the phosphorus coming into Cedar Lake, especially during periods of heavy rains. While noticeable improvements in phosphorus levels may take a few years, these projects will help protect our lake for at least 20 years.

The water level during mid-April appears lower than last year, due to the low snow cover. Hopefully, April and May rainfall will add to the water level. The loons are back and nesting, so give the nesting areas a lot of room when boating.

Thanks to the 98 families that gave over \$13,600 to the visionary funds last year. These contributions have gone principally to the Water Quality Fund and the Walleye Fund. This just further substantiates that the Cedar Lake Conser-

vation Club is one of the premier lake associations in the state.

If you have any ideas or input for either Cedar Lake or the Cedar Lake Conservation Club, please contact me or any Board member. CLCC is **your** lake association and valuable input is always needed to help improve our lake.

Finally, please reflect on how you can do your part to keep Cedar Lake a clean and healthy lake. This lake provides fun and relaxation for all of us. We must all do our part to protect its health and preserve it for generations to come.

I hope that you will take part in the summer picnic and music on the sand bar—July 16 and more information is on the next page. It is a good way to meet people and have fun.

**Enjoy the spring and summer on the lake!**



My grandson Martin's first fish. It was a very good day for both of us on Cedar.

### In This Issue:

- Picnic & Music on the Water pg 2
- AIS Treatment | pg 4
- Starry Stonewort—Our Newest Foe | pg 5
- Zebra Mussel Prevention | pg 6
- Fish and Wildlife on Cedar | pg 7
- Fishing Contest | pg 7
- Support local businesses who support CLCC (see ads inside)

Stay abreast of breaking news - visit [www.cedarlakecc.org](http://www.cedarlakecc.org) for the latest updates.

*Do you enjoy reading about the activities on the lake? This publication is sent to every Cedar Lake property owner. If you don't belong to CLCC, please consider joining to support this newsletter and other CLCC activities.*

## Time to Pay your 2016 Dues

Please take a moment today to send in your dues

They are great value at \$25 per year

See page 12 for easy ways to pay or the dues form on the last page

# CLCC Picnic and Music on the Water

## Saturday, July 16th, 2016

CLCC is continuing the tradition of a great day on the lake filled with family fun, camaraderie, music, and lake activities. The event is on Saturday, July 16th and we are hoping for the perfect summer day!



The CLCC Social Committee, led by Cathi Gabriel Westman, has put together another relaxing and fun-filled afternoon for all ages. True Friends—Camp Courage has opened its lakefront facility again.

From 12 noon until 1:30pm, Cottage Gourmets will serve a wonderful picnic lunch. Games, raffles, lots of entertainment, information on CLCC activities, and great Cedar Lake merchandise sales will fill the time quickly.



Then, everyone is invited to float on over to the sandbar, soak in

the sun, and go dancing on the water. A live band will perform on a barge until 6pm. This lakeside music fest is sponsored by Dingmann Marine and More.

**Reservations are not required and guests are welcome.**

### CLCC Picnic and Music on the Water July 16th, 2016

#### 12noon-1:30pm True Friends—Camp Courage

**Member Appreciation Free Lunch**  
8046 83rd St NW, Maple Lake MN 55358  
Lakeside Dining Hall

Lunch Served by Cottage Gourmets; Games, Raffles, Informative Booths, Cedar Lake Merchandise

The entrance to Camp Courage is on County Rd 7; stay to the left to get to the Dining Hall

*Cost for Lunch : Free for Members  
Guests \$8—kids 12 and under free*

#### 2:00pm-6:00pm Cedar Lake Sandbar

**Live Band Sponsored by Dingmann Marine and More**  
Bring Your Own Refreshments

**No reservations required**

**Guests are warmly welcome**

**Plan to relax, enjoy, and celebrate  
our lake community**

**Mark your calendars now for the  
best day of the summer!**



# Native Plant Sale and Shoreline Restoration Tour Planned for This Summer

Back by popular demand are two events for native plants and shoreline restoration.

## Native Plant Sale—Planned for June Watch for more details

Thinking of adding some native plants to your property? Great - But many natives are not available at typical garden centers. This will be an opportunity to purchase quality native plants at a reasonable price and get expert planting advice.

## Shoreline Restoration—Planned for July Watch for more details

Over the past few years, numerous property owners on Cedar Lake have been installing native shoreline buffers. The native shorelines are a huge win; they contribute to improved lake water quality, lower maintenance after estab-

lished, reduce pesky geese, and are absolutely beautiful. Want to see them close-up and learn first-hand about the process? A tour of projects around Cedar Lake will showcase a variety of terrains, stages of development or specialized conditions. Several are now 3+ years old and are just dazzling.

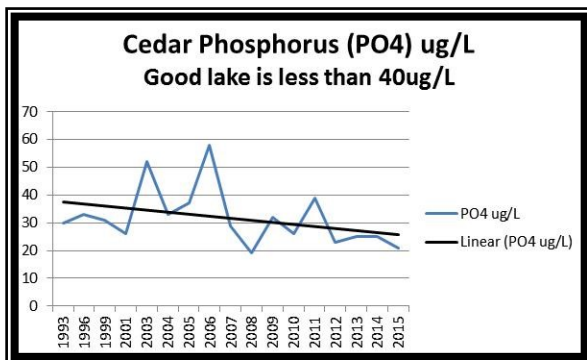
Also, we would like to remind all interested in a shoreline restoration that grants—up to \$750—are available from the Clearwater River Watershed District.



Motzko/Fischer Restored Shoreline

## Clearwater River Watershed District (CRWD) [www.crwd.org](http://www.crwd.org) Projects to Improve and Preserve Cedar Lake Quality Summary in Photos

In 2006 the CRWD started projects to reduce the phosphorus load to our lake. Phosphorus causes reduced clarity and algae blooms. Enhancements have been made over the years and CRWD keeps a watchful eye to maintain the projects. Our efforts and stewardship are paying off with phosphorus levels getting close



April 2015



August 2015

2015 | Old Hwy 55 Reduce Phosphorus  
South side of Cedar, limestone filters for stream that enters Cedar



2016 | Swartout Reduce Phosphorus load to Cedar  
East of Swartout, limestone filters and fish barriers



2006 | Segner Pond to Reduce Phosphorus  
South side of Cedar, stores water from upstream lakes (Albion, Henshaw, Swartout) for treatment through a limestone filter berm



2006 | Rough Fish and Carp Barriers  
An important part of the phosphorus management  
Five barriers are part of the project

# Water Quality Committee

by Kathy Jonsrud [kjonsrud@yahoo.com](mailto:kjonsrud@yahoo.com) | 320-274-2166

## 2016 Aquatic Invasive Species (AIS) Control Strategy

With the early ice out on March 16th, we are all anxious for summer. The Water Quality Committee has been busy over the winter making sure all the details are taken care of for our 2016 Aquatic Invasive Species (AIS) control. Our plans actually started in 2015 with delineations of Curly-leaf pondweed (CLP) and Eurasian watermilfoil (EWM). We also had meetings with the DNR to discuss AIS treatment strategies and keep the lines of communication open for our high value lake.

We secured multiple bids for our 2016 AIS treatment and vegetation mapping services. We will continue using Professional Lake and Land Management (PLM) for our AIS treatment and Freshwater Scientific Services for our vegetation mapping and delineations.

Our grant applications for AIS treatment have been particularly successful this year. We expect \$7,755 from Wright County and about \$2,400 from the DNR. Recognition for the successful grants this year goes to Mike Hankee and his timely applications.

All necessary DNR permits for treatment have been secured. Also, we are pleased that the DNR has once again waived our requirement to collect individual resident signatures for AIS treatment. See more information on page 6.

### Curly-leaf Pondweed (CLP)

This year, we plan to treat 8.8 acres (areas in red on the map to the right). We did not need to treat CLP in 2015. The Committee carefully reviewed the CLP delineations, and elected to move forward to treat the denser areas near the landings for 2016. There are a few other small areas of CLP on the lake, however these little areas are difficult to successfully treat. We continue to watch our CLP and keep it under our goal of about 10 acres. Treatment costs are paid for by grants and by a Clearwater River Watershed District assessment from the Cedar PO6 Project (details below).

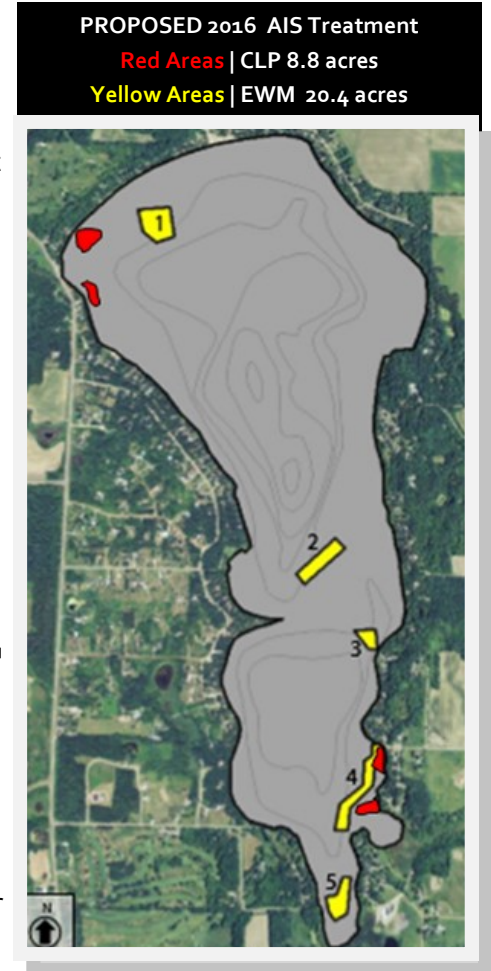
Treatment of the CLP is planned for late May. If the water adjacent to your property is treated, there will be a sign posted on your shoreline.

### Eurasian Watermilfoil (EWM)

Our aggressive approach to control EWM has paid off. Last year we had 35 acres of EWM to treat and this year we have 20.4 acres (areas in yellow on the map to the right). In general, the EWM is in deeper water than last year. Here's an overview of what to expect this year:

**We expect over \$10,200 in grants (DNR and Wright County) to help treat our AIS in 2016**

- ◊ We plan to use a granular 2,4-d chemical for most of the areas. The 2,4-d has shorter restrictions for the use of lake water for irrigating broad-leaf. The area on the north (yellow area—#1) will be treated with a maximum dose of granular triclopyr. This area has proven to be more difficult to treat on our lake and a EWM hybrid is suspected; the granular triclopyr is recommended for these situations.
- ◊ Treatment costs are paid for by grants and by a Clearwater River Watershed District assessment from the Cedar AIS Project (details to the left).
- ◊ We are planning to treat the EWM before July 4th. If the water adjacent to your property is treated, there will be a sign posted on your shoreline.



AIS	ESTIMATED Financials	
<b>Curly Leaf Pondweed (CLP)</b>	Treatment Cost	\$4,264
	2016 Point Intercept*	\$975
	2016 Delineation	\$1,050
		\$6,289
	DNR Grant	\$780
	WC Grant	\$2,755
	<b>ESTIMATED EXPENSE</b>	
	<b>\$2,754 (CRWD PO6 Project)</b>	
<b>Eurasian Water Milfoil (EWM)</b>	Treatment Cost	\$24,630
	2016 Point Intercept*	\$975
	2016 Delineation	\$1,050
		\$26,655
	DNR Grant	\$1,700
	WC Grant	\$5,000
	<b>ESTIMATED EXPENSE</b>	
	<b>\$19,955 (CRWD AIS Project)</b>	

\*2016 Point Intercept Cost Split between CLP and EWM

## Vegetation Mapping | Point Intercept this Year

As part of a mindful and compliant approach to AIS treatment, we conduct an extensive vegetation mapping on Cedar every three years. This mapping involves surveying over 170 points on our lake and identifying the occurrence of vegetation. The point intercept mapping in 2013 indicates we have a healthy aquatic veg-

etation community dominated by 17 species of native vegetation.

Interested in more information? Check out the Vegetation Management Plan on the website [www.cedarlakecc.org](http://www.cedarlakecc.org), click on blue link on the left hand side.



**Good Weed or Bad Weed?**



**Over 90% of the vegetation in our lake is good weed**

# WATER QUALITY COMMITTEE

by Kathy Jonsrud [kjonsrud@yahoo.com](mailto:kjonsrud@yahoo.com) | 320-274-2166

## Our Newest Foe in Minnesota | Starry Stonewort

The list of aquatic invasive species is very long. The newest foe to be found in Minnesota is starry stonewort. It was discovered last fall in Lake Koronis—just an hour west of Cedar Lake on Hwy 55. At this time, it is the only known infestation in Minnesota.



Starry stonewort is an extremely invasive and fast growing species of large algae. It can form dense mats of vegetation that are deep and can reach the surface. The mats reduce plant diversity, impede wild life and spawning, and **significantly** interfere with recreation.

Like some other invasives, **it can spread by a small fragment.** This increases the chance of spreading to other lakes.

The treatment of starry stonewort is still a work in progress. Several treatments have been done on Lake Koronis using a combination of mechanical harvesting and chemical treatment. The results are being carefully monitored and the jury is still out on effective strategies—particularly for a larger infestation.

The access monitoring at the HWY 55 access of Lake Koronis has been increased. Also, the Koronis Lake Association is working very hard to control and understand their recent infestation.

On Cedar we ask for extra vigilance and a watchful eye for Starry Stonewort.



### Starry Stonewort

Many whorls of long branchlets.

## More Cedar AIS Access Monitoring

Once again, CLCC will purchase extra AIS access monitoring time. This will be in addition to the hours provided by the DNR and the Wright County AIS Access Monitoring program.

The CLCC Board of Directors has budgeted funds for almost 300 extra hours of monitoring on the Cedar accesses. The extra monitoring will be done on weekends and holidays.



**STOP AQUATIC  
HITCHHIKERS!™**



**STOP INVASIVE SPECIES  
IN YOUR TRACKS.**

[PlayCleanGo.org](http://PlayCleanGo.org)

We would like to recognize our ongoing partnership with Wright County Parks to provide extra monitoring. This will be our fourth year to collaborate and provide access monitoring at Schroeder Park.

# BEWARE...

**Zebra Mussels are very close to Cedar! There are mature infestations in two Wright County Lakes—Clearwater and Lake John. If you have been there....decontaminate!**

## AIS Access Monitors Needed

Do you know someone who would like an outside summer job on beautiful Wright or Stearns County lakes?

Positions are available for AIS access monitors. The pay is \$10 per hour and scheduling includes weekends and holidays.

**Contact Chip Purcell**  
[purcelltax@gmail.com](mailto:purcelltax@gmail.com)  
Bishop AIS Services, LLC.

# WATER QUALITY COMMITTEE

by Kathy Jonsrud [kjonsrud@yahoo.com](mailto:kjonsrud@yahoo.com) | 320-274-2166

## Zebra Mussel Prevention on Cedar

by Glenn Baird [glennabaird@gmail.com](mailto:glennabaird@gmail.com) | 612-599-6439

Cedar Lake will be starting off 2016 with confirmation that we are NOT currently infested with zebra mussels. However, we must remain vigilant. Last year we had over 30 volunteer monitors and hope to surpass that this year. Volunteers must agree to hang a small tube station under your dock and then record what you see. If anyone is interested in hosting and routinely inspecting a monitoring station, please let me know. Contact me at [glennabaird@gmail.com](mailto:glennabaird@gmail.com).

### New for 2016

CLCC will be an active participant in the Wright County Coalition of Lake Associations (WCCOLA) Early Zebra Mussel Detection and Infestation Assessment Pilot Program. The main goal of the program is to detect the earliest possible stages of infestation. We will place 4 unique plate style monitors at 2 locations on Cedar and send them in for laboratory analysis 2 times this year, once in July and once in September. We will also record water temperatures to provide additional information for laboratory analysis. This program will supplement our visual inspection of monitors and provide scientific analysis of possible infestation.

Later in the summer or early fall, we will also conduct another hands on search as we did in 2015. We will be assisted by professional diver Steve McComas of Blue Water Science, for deep water inspection. This is a very beneficial inspection method so if anyone wishes to help out, please let me know.

### Things we can all do to help prevent infestation:

- ✓ Decontaminate your boat and equipment when traveling from lake to lake and especially if you know you were in an infested lake.
- ✓ Promote boat and trailer inspections. Drain live wells and

bilges.

- ✓ Are you purchasing lake equipment? Unless new, **insist** on a decontamination.
- ✓ Ask your guests to be mindful of our lake and help us prevent infestation.
- ✓ Keep a close eye on your shore line, rocks to docks, and report anything that looks suspect. Zebras have small "D" shaped shells with stripes, have sharp edges and grow in colonies. One millimeter in size is the early stage of formation. Zebras tend to firmly stick or attach themselves to the surface of the object.
- ✓ Inspect submerged rocks or any objects close to the shoreline. Check the area right where the rock or object is sticking out of the lake bottom. This seems to be a common gathering point.
- ✓ Check underwater debris, branches, concrete, etc. as they attach to most anything—lake vegetation, too.
- ✓ Check boat lifts, dock posts and frames. All can harbor colonies. Zebras tend to drift in the water and find the nearest object to latch onto. They can also drift across the lakes with prevailing wind patterns and currents.
- ✓ Whew, a lot to be mindful of. **Please help—your lake is counting on it!**



## Notification of Aquatic Invasive Species Treatment

Cedar Lake Property Owners:

The Cedar Lake Conservation Club (CLCC) has contracted to treat Curly Leaf Pondweed (CLP) and Eurasian Water Milfoil (EWM), an Aquatic Invasive Species, in Cedar Lake in 2016. The Minnesota Department of Natural Resources has granted to the CLCC a waiver of the requirements that the Association obtain signatures of approval by owners of lake-shore property. Instead, the CLCC will notify property owners of the treatment through the:

- ◇ CLCC newsletter which is mailed to all residents of Cedar Lake
- ◇ CLCC website [www.cedarlakeecc.org](http://www.cedarlakeecc.org)
- ◇ CLCC annual member meeting
- ◇ Annandale Advocate and Maple Lake Messenger (local weekly newspapers).

With regard for treatment for 2016:

- ◇ The proposed timeline for treatment is May – August
- ◇ The target species for the treatment is Curly Leaf Pondweed (CLP) Eurasian Water Milfoil (EWM)
- ◇ The method of control or product being used is Aquatic Herbicide appropriate to control CLP and EWM
- ◇ If landowner **does NOT** want treatment to occur adjacent to the landowner's property:

Fill out the adjacent form and notify Mike Hanke immediately at the following address, phone number or email address:  
Cedar Lake Conservation Club | PO Box 835, Annandale, MN E-mail: [mlhanke@gmail.com](mailto:mlhanke@gmail.com) Phone: 651-503-4189

Sincerely, Cedar Lake Conservation Club Board of Directors

I request that no herbicide treatment occur adjacent to our shoreline property.

Signed \_\_\_\_\_ Date: \_\_\_\_\_

All requested information must be entered for verification purposes.

Year:	Property Identification Number(s):
Property Owners Name(s):	
Lake Property Address:	
City/State/Zip	
Phone Number(s) Home:	Cell:
Mailing Address (if different from the Cedar Lake Property Address):	

# FISH AND WILDLIFE COMMITTEE

by Paul Schutte pschutte54@hotmail.com | 612-968-3034

## Walleye Fund Has New Stretch Goal

CLCC stocks walleyes every other year. The last time we stocked in 2014, we raised \$5,000 and stocked about 5,000 fingerlings. The donations to the Walleye Fund over the past 18 months have been amazing; we already have \$4,150 in the fund. We would like to try to stock at least \$6,000 worth this year. The money raised for this comes from the fundraising at our annual picnic in July and through your generous donations. **You can donate to the Walleye Fund using the dues form on page 18 or donate on-line using our website ([www.cedarlakecc.org](http://www.cedarlakecc.org) click on Donate tab on left).**

The DNR is on schedule for their fall 2017 stocking. The DNR fish survey in 2014 showed the highest walleye fish/gillnet since 1986. Clearly, we have made a difference in our commitment to keep Cedar one of the finest fishing lake around.

## Purple Martins and Chimney Swifts

Last year our purple martins on the lake appeared to do very well. Thanks to you that have committed to be some of the best landlords. We manage the T-14 house and gourd rack at Schroeder Park and a T-14 at Camp Courage-True Friends. Several Cedar purple martin landlords reported the martin scouts were at their gourds on April 6th, so we are optimistic our purple martin friends will once again raise their families on Cedar.

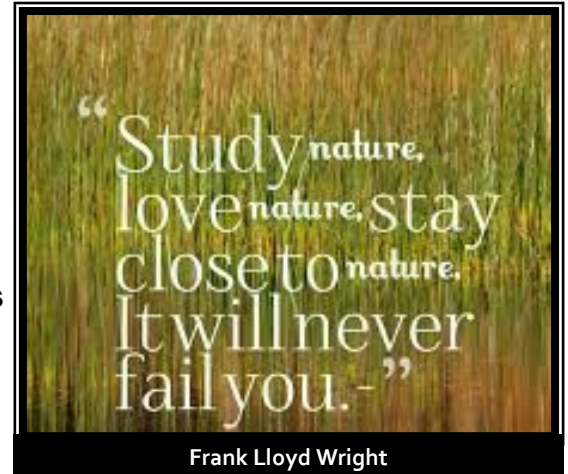
Last spring were able to construct a chimney swift tower at Schroeder Park through a special donation. While cruising the lake stop by and check out the great informational signs of

Purple Martins and Chimney Swifts at Schroeder Park and learn about these concerned species.

## Loon Nesting Platforms/Buoys

The buoys and Loon nesting platforms you see around the sandbar and other areas on

the lake are placed out each year by our committee members. Permits are acquired each year from the Sheriff's Office for these. As we do every year, we ask everyone to respect these areas while the loons complete their nesting and raising of their chicks.



**Have a fun and safe year on the lake and may each day be nature filled.**

# CLCC Fishing Contest | Get your line wet!

Shhhh....don't tell anyone, but the fishing is really good on Cedar.

Last December, *Outdoor News* featured Cedar Lake on a full page "Lake Profile". The article mentioned the yearly stocking of walleyes on our lake, and the 2014 DNR gill net survey that indicated the highest catch of walleyes since 1986. The article also mentioned 35-inch pike and good size large mouth bass.

Part of the fun of catching fish on Cedar is our enduring Fishing Contest. Here's the scoop:

- ◇ Contest runs from May 14th to September 1st, 2016.

**Take some time to get those kids and grand-kids out there to catch that big one!**

**Good luck and wear your personal flotation device!**

- ◇ Bring your lunker for weigh-in at Nicholson's 8879 Iresfled 320-274-3516 (Near Schroeder Park)
- ◇ Usual prize categories are for walleye, bass, northern pike, crappie, and sunfish—but judges are impressed by all the fish in our lake.
- ◇ Cash prizes awarded at the Annual member Meeting, September 10th, 2016 9am, Corinna Township.
- ◇ All ages encouraged to join the fun!



Michael Hankee, Jr.  
2015 1st place Walleye



Tyson Mosher (Schutte/Daniel's grandson)  
2015 1st place Sunfish and 2nd place Bass

## 2016 CLCC EVENTS MARK YOUR CALENDAR

April 16 <sup>th</sup>	Board of Directors Meeting	All welcome! 9am   Corinna Town Hall 9801 Ireland Ave NW
May 14 <sup>th</sup>	Fishing Contest Begins	Weigh your fish with Dean and Kathy Nicholson 8979 Iresfeld 320-274-3516
June 11 <sup>th</sup>	Board of Directors Meeting	All welcome! 9am   Corinna Town Hall 9801 Ireland Ave NW
June	Native Plant Sale	Watch for more details
July 4 <sup>th</sup>	Boat Parade and Dock Decorating Contest	2pm   North side of sandbar
July 16 <sup>th</sup>	Picnic and Music on the Water	Picnic 12-1:30pm   Camp Courage-True Friends
July	Shoreline Restoration Tour	Watch for more details
September 1 <sup>st</sup>	Fishing Contest Ends   Winners Announced at Annual Member Meeting Sept 10 <sup>th</sup>	Weigh your fish with Dean and Kathy Nicholson 8979 Iresfeld 320-274-3516
September 10 <sup>th</sup>	Annual Member Meeting and Board of Director's Meeting	All welcome! 9am   Corinna Town Hall 9801 Ireland Ave NW
November 12 <sup>th</sup>	Board of Director's Meeting	All welcome! 9am   Corinna Town Hall 9801 Ireland Ave NW

**Reasons to Volunteer**

Do your part  
Meet new people  
Join the excitement

**Be a positive Influence**  
Raise Awareness

Develop new talents  
**Grow from the experience**  
Learn and Serve  
Personal satisfaction

Work for a cause  
Be part of a Team  
Face new challenges

**Pass along Wisdom**  
Preserve the environment

**Keep Active**  
Raise Awareness

Share your vision

## Get To Know The CLCC Board and Officers

	Start	End	E-Mail	Telephone
Cathi Gabriel-Westman	Aug 2012	Sept 2016	<a href="mailto:cgwlawoffice@gmail.com">cgwlawoffice@gmail.com</a>	651-253-2675
Diane Salls	Sept 2012	Sept 2016	<a href="mailto:dsalls40@yahoo.com">dsalls40@yahoo.com</a>	952-857-9114
Bobby Ebert	Sept 2012	Sept 2016	<a href="mailto:bobby.ebert@fortunefin.com">bobby.ebert@fortunefin.com</a>	651-278-2257
Glenn Baird	Sept 2013	Sept 2017	<a href="mailto:glennabaird@gmail.com">glennabaird@gmail.com</a>	612-599-4639
Orv Jonsrud	Sept 2013	Sept 2017	<a href="mailto:ojonsrud@yahoo.com">ojonsrud@yahoo.com</a>	320-274-2166
Bill Arendt (President)	Sept 2013	Sept 2017	<a href="mailto:wfa12345@aol.com">wfa12345@aol.com</a>	320-274-2422
Christa Lane-Larsen (Secretary)	Sept 2014	Sept 2018	<a href="mailto:clanelarsen@gmail.com">clanelarsen@gmail.com</a>	612-940-1080
Julie Grimme	Sept 2014	Sept 2018	<a href="mailto:jul9hi@aol.com">jul9hi@aol.com</a>	612-805-0081
Chris Nelson	Sept 2014	Sept 2018	<a href="mailto:cnelson@foam-industries.com">cnelson@foam-industries.com</a>	763-742-2742
Karl Leslie	Sept 2014	Sept 2018	<a href="mailto:karl.leslie@wolterskluwer.com">karl.leslie@wolterskluwer.com</a>	320-274-3077
Karen Lohn	Sept 2015	Sept 2019	<a href="mailto:karenlohn@boreal.org">karenlohn@boreal.org</a>	320-274-2858
Kathy Miron (Vice President)	Sept 2015	Sept 2019	<a href="mailto:miron72@comcast.net">miron72@comcast.net</a>	763-425-0904
Liz Baird* (Treasurer)	Sept 2012	Sept 2016	<a href="mailto:lizbaird22@gmail.com">lizbaird22@gmail.com</a>	612-599-4128

\*Non board member

## Cedar Lake Merchandise is Available

We will be at all Cedar Lake Conservation Club events with t-shirts, towels, sweatshirts, and denim shirts in a range of sizes and colors. We also have towels and fleece throw blankets. If you know you would like an item in a specific size and color please contact

**Julie Grimme [jul9hi@aol.com](mailto:jul9hi@aol.com) or 612-805-0081.**





# Support Those Who Support CLCC

## WEAR CEDAR LAKE

close to your heart.



Sterling Silver, White & Yellow Gold  
Customize with a Diamond

*the original*  
**LAKE PENDANT**

*Miller's Jewelry*

Find us on



MAIN STREET, ANNANDALE 274-5313

*Let Us Exceed Your Expectations!*

**ANCHOR  
DOCK & LIFT**

www.anchor-dock.com

*World Class Products, Exceptional Service*

DOCKS | LIFTS | RECREATION | RENTAL

960 Elm Street E, Hwy 55 | Annandale (320) 274-6500

*Your Mother-Daughter Team in  
the Heart of the Lakes Area*

**Marci Segner**  
320-266-1084  
msegner@remax.net

**Joy Carlson**  
320-266-1086  
joycarlson@remax.net  
joyandmarcihomes.com

RE/MAX  
FROSTEN

*Mention you saw their ad in our  
newsletter and thank them!*

*Cottage Gourmets*  
*food for the events in your life*

**Barbara Westman**  
Website: [cottagegourmets.com](http://cottagegourmets.com)  
Phone: 320-493-0416  
[barb.westman@gmail.com](mailto:barb.westman@gmail.com)

# Support Those Who Support CLCC




Lakeshore, Residential  
& Land Specialist

**Jim Splinter**  
REALTOR®

Cell: 320-980-0560  
Fax: 763-682-6922

[www.jimsplinter.edinarealty.com](http://www.jimsplinter.edinarealty.com)  
[jimsplinter@edinarealty.com](mailto:jimsplinter@edinarealty.com)




**MARVIN**  
Windows and Doors  
Built around you.™

WINDOWS AND DOORS WITH THE POWER TO TRANSFORM

Marvin® Windows and Doors is a world leader in providing products with the ability to transform projects into truly unique living spaces. When choosing the right windows and doors for your project, count on your local Marvin® experts, Maple Lake Lumber Co., for the perfect solution.

320-963-3612  
[www.maplelakelumber.com](http://www.maplelakelumber.com)  
120 Oak Ave S.  
Maple Lake, MN 55358

**MAPLE LAKE LUMBER CO.**



DESIGN / PRINT / MARKETING

Helping to make clients look GREAT since 1994

Scan to visit



our site now

309 12th Ave S | Buffalo, MN 55313  
763.682.3750 | [www.IntegriPrint.com](http://www.IntegriPrint.com)



**J&J MARINE**  
WE ROCK THE BOAT!

14882 State Hwy. 55, South Haven, MN 55382

**ALUMACRAFT**  


**Godfrey**  


**YAMAHA GENERATORS**  


**YAMAHA**  


**FORZA-DOCK**  


SALES - SERVICE  
PARTS - ACCESSORIES

**YAMAHA** **MERCURY**  
**EVINRUDE** **SUZUKI MARINE**

**320-236-3625**  
[www.jjmarineinc.com](http://www.jjmarineinc.com)

Mention you saw their ad in our newsletter and thank them!

# Support Those Who Support CLCC

*We know the Annandale Lakes Area Real Estate Market*



If you're looking to buy or sell a lake home or cabin, give us a call today!



Annandale • RemaxGo.com • 320-274-2233



**LAKE CENTRAL**  
INSURANCE SERVICES  
INVESTMENTS

Securities and Insurance offered through Centa Investment Services, LLC, member FINRA/SIPC. Investments are not FDIC Insured-Not a Deposit-Not Insured by any Federal Government Agency-May Lose Value-Not Financial Institution Guaranteed.

Auto	IRAs
Home	401Ks
Life / Health	Mutual Funds
Business	

www.mylakecentral.com

Maple Lake 320-963-3163 Annandale 320-274-8216 Clearwater 320-558-2480

Mention you saw their ad in our newsletter and thank them!

**Maple Lake Area:**  
400 State Hwy 55 NW  
Maple Lake, MN 55358  
Ph: 320.963.2178

**Metro Area:**  
4700 Osseo Rd  
Minneapolis, MN 55430  
Ph: 612.588.4000



*Lawn Sprinkler Design, Installation and Service*  
www.carefreelawnmn.com  
info@carefreesprinklers.com

WE CREATE **Outdoor DREAMS**



Meet with one of our Landscaping Experts to create a plan that will transform your outdoor space from simply functional to Truly Exceptional!

**Backyard Reflections, Inc.**  
*We Create Outdoor Dreams*

320-274-6336  
www.backyardmn.com

*Lake Property Landscaping Specialist*

# CLCC MEMBERSHIP COMMITTEE

By Kathy Miron, CLCC Vice-President miron72@comcast.net | 763-425-0904

## Time to Pay 2016 Dues

2015 was a record membership year for us with 195 paid memberships which is over 80% of our lake residents belonging to CLCC. We also have 5 paid "Friends of Cedar Lake" memberships. Most lake associations are delighted to reach 50% membership, so we certainly have a strong showing on Cedar. We need your support to maintain the CLCC as a vibrant lake association.

Dues are \$25 per calendar year and many "give a bit more" as a Visionary of Cedar Lake. **We do not send out individual bills; we rely on this newsletter as the reminder.** You can use the form on the back of this newsletter, or pay on-line at [www.cedarlakeecc.org](http://www.cedarlakeecc.org).

**Please take a moment right now to pay your dues before it slips your mind.**

## TWO EASY WAYS TO PAY DUES



Fill out the dues form on the last page of this newsletter and mail in



On-line payment at [www.cedarlakeecc.org](http://www.cedarlakeecc.org)  
(see link on left hand side)

## Newsletter and Website Services

The CLCC newsletter is published three times a year (April, July & November). A copy is also posted on our website for future reference. Kathy Jonsrud is the editor of the newsletter, which is one of the best lake association newsletters in the Wright County area. Mark Trostad is in charge of the website and e-mail notifications. We can support up to two emails per family. Updates to emails (and other directory information) should be sent to Liz Baird, [lizbaird22@gmail.com](mailto:lizbaird22@gmail.com). Thanks Kathy, Liz, and Mark for your efforts.

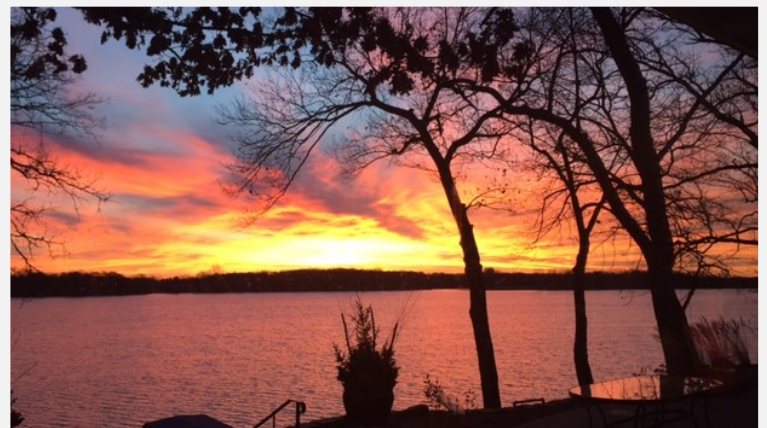
## CLCC Treasurer's Report

### Fund Balances at 4/11/2016

<u>FUNDS</u>	<u>AMOUNT</u>
Water Quality	\$34,118.62
Walleye Stocking	\$4,153.19
General CLCC	\$6,225.57
Dave Larsen Visionary	<u>\$2,705.44</u>
<b>TOTAL</b>	\$47,202.62

*Thanks to Liz Baird —Treasurer of CLCC. Accurate and timely financial recordings are critical to maintain the trust and confidence of members. An outside financial review is performed every two years (next scheduled in 2016) to ensure that funds and transactions are accurate.*

## Where on Cedar?



All lake people enjoy photographs of the beauty and fun we share on the lake. Think you know the lake well? Can you figure out where this photo was taken from? (answer on page 15).

We would love to have your favorite electronic photo of Cedar. Send to Kathy Jonsrud, CLCC Newsletter Editor [kjonsrud@yahoo.com](mailto:kjonsrud@yahoo.com)

# Support Those Who Support CLCC

## We Are Seriously Local

Marketing Cedar Lake for over 40 years,  
stop by and pick up a map!



Annandale Office 720 Elm St. E (320) 274.5737  
Maple Lake Office 501 Maple Ave. N (320) 963.2088  
www.oakrealtymn.com

Find us on:

Coffee ~ Wine Bar ~ Beer

# cafe Jules

NEW Bistro!

Food & Friends

20 Cedar Street E  
Annandale, MN  
Located next  
to City Hall  
320.274.7477

## all things good of course

320-274-GIFT

### FINE GIFTS & GREAT FINDS

Jim King, Owner  
atg@lakedalelink.net

10 Oak Ave N Annandale, MN 55302  
www.allthingsgoodmn.com

CRARY WeedRoller PRO

YOUR BEST SOLUTION FOR LAKE WEED PROBLEMS

NO CHEMICALS | NO BACKWASHING BAYES | HANDS-FREE OPERATION

www.lakeweedroller.com

Lakeside Innovations

Cindy & Jeff Bonde  
WeedRoller Sales & Service

3117 53rd St NE  
Buffalo, MN 55313  
info@lakeweedroller.com  
lakeweedroller.com  
612-222-2487

“I've used the Crary WeedRoller for about 20 years on my lake front property and would choose no other way to control the lake weeds. It is an eco-friendly alternative to get rid of lake weeds and helps keeps the environment clean, in addition to creating an area for fish spawning. It's a great investment and will increase the value of my lake home for years to come!”

Babe Winkelman  
Host of Good Fishing and Outdoor Secrets

CRARY WeedRoller PRO

## Dingmann MARINE AND MORE LLC

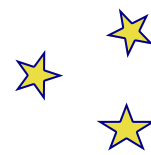
Service & Repair  
320-274-8688  
1100 Business Blvd.,  
Annandale Business Park,  
(off Hwy. 55 E)

- Winterization
- Storage • Service
- Boats, Motors,  
Snowmobiles, ATVs,  
Watercraft





# CLCC VISIONARIES



## Cedar Lake Visionary Fund

The Cedar Lake Visionary Fund is a great way to donate to the CLCC. CLCC is a 501(c)(3) tax exempt organization, so your donations are tax deductible. Our Visionary Fund was started in 2010 and has become an important cornerstone of making a difference on Cedar Lake. Our Visionary contributions for 2015 were over \$13,600—shattering all past records! .

**Add a bit more to your dues and join the Visionaries**

Your contribution will be directed to the fund of your choice: General, Walleye Stocking and Water Quality. Payments can be made either by check or very conveniently on-line. The CLCC website ([www.cedarlakeecc.org](http://www.cedarlakeecc.org)) has a tab for donating electronically using Pay Pal. Please support this program by donating to the fund of your choice. For further information, contact Kathy Miron at 763-425-0904 or [miron72@comcast.net](mailto:miron72@comcast.net)

## THANKS TO ALL WHO HAVE CONTRIBUTED!

### Visionary Contributions Since November 2015 and Lifetime Visionary

<p><b><u>SILVER: (up to \$99):</u></b></p> <p>Bruce and Julie Emerson*  Rod and Sheila Melgard  John and Bonnie Sadergaski  Keith and Sandra Sather  Steve and Debbie Tobako</p>	<p><b><u>GOLD: (\$100 to \$499)</u></b></p> <p>Jim Domain*  Greg and Char Duppler*  Steve and Becky Grabski*  Darren and Andrea Heairet*  Karl and Mary Leslie*  Bob and Karen Lohn  Jim and Diane Martin*  Tony and Leanne Peters  Diane Salls*  Dennis Smaagard  Phil and Beth Trout*  Charles and Judy Vinar  Karen and Wendy Watson*</p> <p><b><u>PLATINUM (\$500 to \$999)</u></b></p> <p>Bob and Debra Wagner*</p>	<p><b><u>LIFETIME: (\$1,000 plus)</u></b></p> <p>Bill Arendt &amp; Mary Ellen Wells*  Glenn &amp; Liz Baird*  Bruce &amp; Cathy Campbell*  Arlan and Janet Daniel*  Dick &amp; Mary Beth Ebert*  Mike &amp; Laurie Hankee*  Orv &amp; Kathy Jonsrud*  Christa Lane-Larsen*  Terry &amp; Christine Morse*  Scott and Chris Nelson*  Steve &amp; Paula Ostrom*  Dave &amp; Jan Usset*  Bill &amp; Ruth Westhoff*  RJ and Sue Wolf*</p>
--	--	--

\* Indicates Sustaining Member with multiple contributions in that category. When donors reach a higher visionary category with multiple donations, they will be recognized in that higher category.

## CLCC Partners with Jane Goodall Environmental Sciences Academy



The Jane Goodall Environmental Sciences Academy (JGESA) is a tuition free, public charter school for grades 6-12. There is an environmental emphasis, using a personalized education setting with hands-on projects and authentic learning approaches. JGESA is based out of the Camp Courage-True Friends facility on Cedar Lake.

CLCC has partnered with JGESA to enjoy the wonders and wealth of projects and scientific data we have on Cedar Lake. As a first step, students will join our Zebra Mussel Monitoring efforts this

spring. The students will oversee four monitors at the Camp Courage docks and report their results. Some may also document the other critters that the monitors attract.

Also, the decades of water quality data we have on Cedar has been shared. Data of this nature is a great opportunity for an authentic learning activity.

Several of the students have a passion for all things fish (fishing in particular). CLCC leveraged our strong relationship with DNR Fisheries to connect the

school with DNR resources. The Cedar DNR Fish Survey conducted in 2014 was great for interesting discussions and possible analysis.

**We would like to expand and deepen our relationship with JGESA.** Do you have an interest in being a resource or mentor? Please contact Kathy Jonsrud ([kjonsrud@yahoo.com](mailto:kjonsrud@yahoo.com) 320-274-2166) for more information.

# Kids Don't Float Life Jacket Loaner Station at Schroeder Park

CLCC is pleased to again sponsor the lifejacket loaner station at Schroeder Park (north side of lake) for the third year. CLCC has partnered with Wright County Parks and Cabela's for the station. The station provides an opportunity for any one using the lake who finds they don't have enough life jackets to borrow a life jacket at no cost and then return it to the station. There are two different sizes of kid's jackets and several adult jackets.

The station has been a huge success. Often many of the jackets were being used. At the end of most of the seasons only a couple of jackets did not find their way back to the station.

A special thanks to CLCC member Mark Grimme for overseeing the station in 2016.



## Wright County Requirements for Those Renting Lake Places with Watercraft

Here is a message from Deputy Jake Hermansen with the Wright County Sheriff's Office:

*We are seeing many people renting cabins and the watercraft the owners have at the cabin are being used with the rentals. There is a Wright County Sheriff's Safety Statute (86B.105) that prohibits the use of any watercraft or safety equipment for rent, lease, or hire that does not comply with the standards of safety for the or equipment prescribed by the commissioner. When you rent out your home/cabin and allow the use of your watercraft with the rental you are renting out the watercraft. My goal is simply to inspect watercraft that you might rent out. This is so your renters don't have any issues with Law Enforcement because of the equipment/watercraft they are using. I will inspect them and provide you with a report of any items that need to be corrected. Any corrections will need to be corrected before you allow the watercraft to be used. A sticker for 2016 will be placed next to your registration showing you have had the watercraft inspected. Call me at 763-682-7689 to schedule an inspection or email me at [jake.hermansen@co.wright.mn.us](mailto:jake.hermansen@co.wright.mn.us).*

## CLCC Committees and Board of Directors—Where can you help?

### CLCC Committees

The CLCC is a very active lake association, fostering fellowship among the lake residents while promoting and protecting the wildlife and natural beauty of Cedar Lake. No members, directors or officers receive any compensation. The success of CLCC depends on volunteer efforts, so please join in. Check out the committees!

### Board of Directors has three openings in fall

This year, we have three directors who have fulfilled their four year term and will be leaving the board in September. Carter Diers leads the Nominating Committee and we are looking for candidates to fill these spots.

- ◇ **Is this your year to step-up?**
- ◇ **Do you have an interest in learning more about the lake?**
- ◇ **Would you like to serve with an exceptional group of volunteers?**

Please let Carter hear from you! [carterdiers@yahoo.com](mailto:carterdiers@yahoo.com) 612-963-9303

P.S. If not a board commitment, would you like to help on a committee or event? See box above for opportunities.

CLCC Committee	Chair	Contact Information
<b>Water Quality</b> Protect and improve water quality & beneficial vegetation	Kathy Jonsrud	<a href="mailto:kjonsrud@yahoo.com">kjonsrud@yahoo.com</a>
<b>Fish and Wildlife Conservation</b> Preserve and protect beneficial wildlife, fish, and the natural beauty of Cedar Lake	Paul Schutte	<a href="mailto:pschutte54@hotmail.com">pschutte54@hotmail.com</a>
<b>Membership and Quality Lake Life</b> Encourage membership and involvement	Kathy Miron	<a href="mailto:miron72@comcast.net">miron72@comcast.net</a>
<b>Social</b> Promote fellowship among lake residents and friends of Cedar Lake	Cathi G Westman	<a href="mailto:cglawoffice@gmail.com">cglawoffice@gmail.com</a>
<b>Merchandising</b> Select, manage, & sell items that promote Cedar Lake	Julie Grimme	<a href="mailto:julshi@aol.com">julshi@aol.com</a>
<b>Nominating</b> Provide Board of Director nominations to the membership	Carter Diers	<a href="mailto:Carterdiers@yahoo.com">Carterdiers@yahoo.com</a>



Every action on the lake has meaning

**Where on Cedar?** The photo on page 12 is looking east on the south 1/3 of the lake. This dazzling sunrise was the beginning of another beautiful day on the lake. Photographer is Liz Baird (CLCC Treasurer).

Cedar Lake Conservation Club  
P.O.Box 192  
Annandale, MN 55302

PRSR STD  
US POSTAGE  
PAID  
BUFFALO, MN  
PERMIT NO. 76


*In This Issue*

- Picnic and Music on the Water *pg 2*
- AIS Treatment *pg 4*
- Starry Stonewort Our Newest Foe *pg 5*
- Zebra Mussel Prevention *pg 6*
- Fish and Wildlife on Cedar *pg 7*
- Fishing Contest *pg 7*
- Support local businesses who support CLCC (see ads inside)

**~~ Time to Pay 2016 Dues~~Consider “Adding a Bit More”~~**

CLCC needs your support. Annual dues to CLCC are \$25, based on the calendar year, and can be paid by check with the form below or electronically on-line. Visit the CLCC website ([www.cedarlakeecc.org](http://www.cedarlakeecc.org)) and click on the “Donate” tab under “Dues” and the “Donate” tab under “Visionary” to make your contributions.

*CLCC is a 501(c)(3) tax-exempt organization, so dues and contributions are tax deductible.*

	Dues Payment	\$25.00
	YES! I can give a bit more (circle desired fund) :	
	Walleye Stocking Fund	Water Quality
	<b>TOTAL:</b>	_____
Name: _____		
Home Address: _____		
Lake Address: _____		
Preferred Phone: _____		
Email: _____ Additional Email _____		
<small>Please include this form if paying by check and make checks payable to: Cedar Lake Conservation Club or CLCC.          Mail to: CLCC, PO Box 192, Annandale, MN 55302          Online dues payment is available at <a href="http://www.cedarlakeecc.org">www.cedarlakeecc.org</a></small>		