



Cedar Lake Conservation Club

Maple Lake – Annandale, MN

April 2017

President's Letter by *Kathy Miron*
mironkg72@gmail.com | 763-688-0705



This publication is sent to every Cedar Lake property owner.

If you don't belong to CLCC, please consider joining to support this newsletter and other CLCC activities.

In This Issue:

- Picnic and Music on the Water pg 2
- 2017 AIS Treatment pg 4
- Free Local AIS Decon pg 7
- Fishing Contest pg 7
- Mandatory Decon Pilot pg 8
- Your Lake Home Septic pg 9
- 2017 Events pg 10
- Support local businesses who support CLCC (see ads inside)

Stay abreast of breaking news - visit www.cedarlakecc.org for the latest updates.

Happy Spring! Ice out...ice in!! This has been a very mild winter with little snow fall and temperatures going from 65 degrees to freezing. Strange weather even for MN. The ice went out on March 8th this year! This is the earliest ice out since we began to keep records in 1955. The previous record was March 14th, 1988. Last year the ice went out on March 16th. It was great to see beautiful Cedar Lake flowing and then the following week the ice came back with the cold spell. Spring is finally here and we are looking forward to getting our docks in and boats out to enjoy the lake!

The Water Quality Committee, chaired by **Kathy Jonsrud** has been very busy coordinating our Aquatic Invasive Species (AIS) treatment strategy for 2017. **Glenn Baird** applied for grant money and was successful. We will be treating for curly leaf pondweed (CLP) and for eurasian water milfoil (EWM) in 2017. Please see **Kathy Jonsrud's** article on page 4 for more information. **Bobby Ebert** will be coordinating our access monitoring at County Rd 6, Schroeder Park and Wurm's landing. **Glenn Baird** will continue to monitor for zebra mussels and **Karl Leslie** will monitor our lake water levels to determine if we need to enforce a no wake zone anytime during the season. **Mark Grimme** will have the Kids Don't Float program at Schroeder Park up and running by the fishing opener.

Paul Schutte, the Chair of our Fish and Wildlife Committee, will be busy this spring repairing any of the loon nesting platforms that are needed, cleaning out the Wood Duck houses, as well as the Purple Martin Houses.

And of course, **Cathy Gabriel-Westman** has all in hand for our annual Picnic and Music on the Water on July 15th (see

page 2).

Thank you to all the people who volunteer to do so much to make Cedar Lake such a beautiful lake!!!

Thank you to all the members who have generously donated money to the CLCC! The money is used to offset our expenses and used for the Water Quality Fund and the Walleye Fund. We have not detected any infestations of zebra mussels in Cedar Lake but our new concern is starry stonewort. It has not been detected in Cedar Lake but it has been detected in nearby Lake Sylvia and is a concern for all lakes in the area. Please educate homeowners and boat owners to ensure their boats and docks are not carrying any AIS.

Mark your calendars for the annual summer picnic and music on the sandbar to be held on July 15th at True Friends (Camp Courage). It is a fun day with lunch, a raffle and then music on the water. It is a great way to meet other homeowners and help support the CLCC. Check out the details on page 2.

Enjoy the spring and summer on Cedar Lake!

Kathy Miron



My grandsons Luke and Ben and their cousins Paige and Logan floating on Cedar Lake. Their smiles make my heart sing.

Time to Pay Your 2017 Dues

Please take a moment today to send in your dues.

They are great value at \$25 per year.

Pay your dues by June 1st and you will get the new 2017 lake directory in the mail.

See page 14 for easy ways to pay or the dues form on the last page.

PICNIC and MUSIC ON THE WATER

Saturday, July 15th, 2017



Dance on the water at the sandbar to a live band 2-6pm

CLCC is continuing the tradition of a great day on the lake filled with family fun, camaraderie, music, and lake activities. The event is on Saturday, July 15th and we are hoping for the perfect summer day!

The CLCC Social Committee, led by Cathi Gabriel Westman, has put together another relaxing and fun-filled afternoon for all ages. True Friends—Camp Courage has opened its lakefront facility again.



Fun for everyone at Music on the Water

Note
earlier
start



Free lunch for members, information, great raffle items

From 11:30am to 1pm, Cottage Gourmets will serve a wonderful picnic lunch. Games, raffles, lots of entertainment, information on CLCC activities, and great Cedar Lake merchandise sales will fill the time quickly. **No reservations are required and guests are warmly welcome.**

Then, everyone is invited to float on over to the sandbar, soak in the sun, and go dancing on the water. Carter Diers helps to make all the details look easy, and a live band will perform on a barge until 6pm. This lakeside music fest is sponsored by Dingmann Marine and More.

**Mark your calendars now
(July 15th) for the best day of the
summer!**

CLCC Picnic and Music on the Water July 15th, 2017

11:30-1:00 True Friends—Camp Courage

Member Appreciation Free Lunch
8046 83rd St NW, Maple Lake MN 55358
Lakeside Dining Hall

Lunch Served by Cottage Gourmets; Games, Raffles, Informative Booths, Cedar Lake Merchandise

The entrance to Camp Courage is on County Rd 7; stay to the left to get to the Dining Hall

Cost for Lunch : *Free for Members*
Guests \$8—kids 12 and under free

2:00pm-6:00pm Cedar Lake Sandbar

Live Band Sponsored by Dingmann Marine and More
Bring Your Own Refreshments

No reservations required.
Guests are warmly welcome.
**Plan to relax, enjoy, and celebrate our
lake community.**

FISH AND WILDLIFE COMMITTEE

by Paul Schutte pschutte54@hotmail.com | 612-968-3034

Bluebirds

Everyone loves bluebirds and why wouldn't we? They are beautiful to watch and sing a wonderful sweet song. So if you want to attract them there are a few things to do. First, make or purchase a house specifically for bluebirds. Put it on a 6 foot pole with a predator guard if using other than a small conduit. Do not place it on a tree. Place it in the open area in your yard if possible (they prefer this), although finding an open spot in your yard can be a challenge around the lake. Placing it in an open area will also deter wrens from using the house. They can be very aggressive towards bluebirds, sometimes raiding their house either by breaking their eggs or killing the chicks.

If you are successful on getting a pair to nest, enjoy them and watch the devotion of both parents to the brood. After the fledge, clean the nest out immediately and chances are they will re-nest and provide you with many more weeks of enjoying the Gems of Blue!!!

CLCC Walleye Fund

With your generous donations in the past, our walleye population has shown to be increasing by the recent DNR fish survey. However, the walleyes can be tough to catch. A high population of quality forage for walleyes to feed on has been observed thus making them less likely to take your bait. This may be a good thing for them, and is actually showing us how healthy and diversified Cedar Lake actually is.

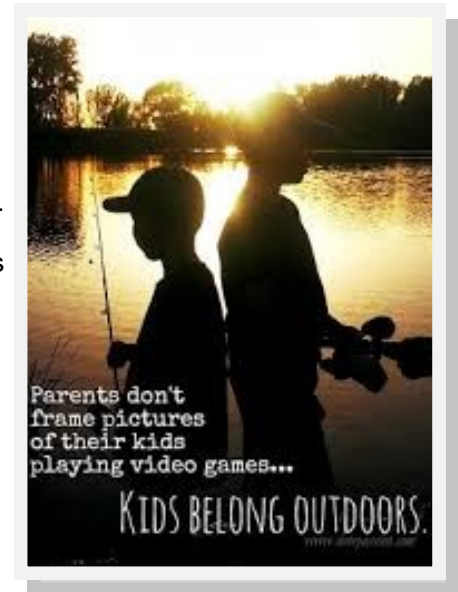
The DNR is on schedule for their fall 2017 stocking and we will be stocking in the fall of 2018. You can go to our web site www.cedarlakeecc.org to donate. We will also be having a raffle at our annual picnic (see page 2 for more details). Finally, the past DNR fish survey has shown that we have made a difference in our commitment to keep Cedar one of the finest lakes in the area.



CLCC Fishing Contest (more on pg 7)

We will again be sponsoring our annual fishing contest which is open to adults and kids. Take some time to get your kids and grandkids out there to catch that monster. There will be cash prizes for the winners. See more information on page 7.

Good luck and wear your personal flotation device!



CLCC Where can you help?

The CLCC is a very active lake association, fostering fellowship among the lake residents while promoting and protecting the wildlife and natural beauty of Cedar Lake. No members, directors or officers receive any compensation. The success of CLCC depends on volunteer efforts, so please join in.

**Does a committee interest you?
Or a leadership position on the**



CLCC Committee	Chair	Contact Information
Water Quality Protect & improve water quality & beneficial vegetation	Kathy Jonsrud	kjonsrud@yahoo.com
Fish and Wildlife Conservation Preserve & protect beneficial wildlife, fish, & the natural beauty of Cedar Lake	Paul Schutte	pschutte54@hotmail.com
Membership and Quality Lake Life Encourage membership & involvement	Karen Lohn	karenlohn@boreal.org
Social Promote fellowship among lake residents & friends of Cedar Lake	Cathi Gabriel Westman	cglawoffice@gmail.com
Merchandising Select, manage & sell items that promote Cedar Lake	Julie Grimme	jul9hi@aol.com
Nominating Provide Board of Director nominations to the membership at the Annual Meeting	Carter Diers	carterdiers@yahoo.com

Water Quality Committee

by Kathy Jonsrud kjonsrud@yahoo.com | 320-274-2166

2017 Aquatic Invasive Species (AIS) Control Strategy

Another year with an early ice out! CLCC has records since 1955 of ice out dates and this year was the earliest ever on March 8th. The Water Quality Committee has been busy over the winter making sure all the details are taken care of for our 2017 Aquatic Invasive Species (AIS) control. Our plans actually started in 2016 with delineations of curly leaf pondweed (CLP) and eurasian watermilfoil (EWM). These delineations confirmed we have a reasonable amount of CLP and EWM to treat and our diligence to control invasive species has paid off.

We are pleased to share that our grant applications for AIS treatment have once again been successful. We expect \$4,667 from Wright County and about \$1,425 from the DNR. Recognition for the successful grants this year goes to Glenn Baird and his timely applications. The DNR grants were extremely competitive, and all funds were exhausted within a couple days of the grant applications opening up.

Cedar Lake expects over \$6,000 in grants (Wright County and DNR) to help with AIS treatment in 2017

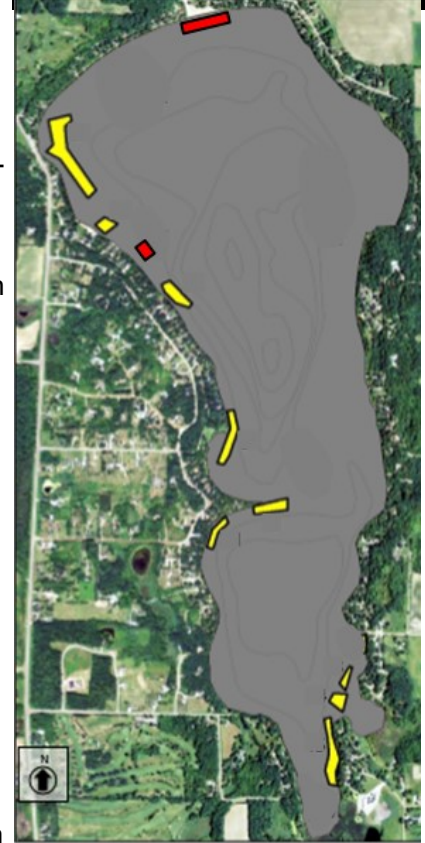
The DNR has issued permits for our treatment plans exactly as requested. Also, we are pleased that the DNR has once again waived our requirement to collect individual resident signatures for AIS treatment.

AIS	2017 PROPOSED Financials	
Curly Leaf Pondweed (CLP) 18.8 acres	Treatment Cost	\$12,485
	2017 Delineation	\$1,050
		\$13,535
	DNR Grant	\$1,300
	WC Grant	\$3,000
	EXPENSE \$9,235 (CRWD PO6 Project)	
Eurasian Water Milfoil (EWM) 2.5 acres	Treatment Cost	\$2,553
	2017 Delineation	\$1,050
		\$3,603
	DNR Grant	\$125
	WC Grant	\$1,667
	EXPENSE \$1,050 (CRWD AIS Project)	

Curly-leaf Pondweed (CLP)

This year, we plan to treat 18.8 acres (areas in yellow on the map to the right). Last year, we treated 8.8 acres, and our all time high was treating 38 acres in 2010. Several mild winters with limited snow have been favorable for CLP growth, as CLP can grow in very cool temperatures. The Water Quality Committee carefully reviewed the CLP delineations, and elected to treat the denser areas and those near the landings for

PROPOSED 2017 AIS Treatment
Yellow Areas | CLP 18.8 acres
Red Areas | EWM 2.5 acres



2017. There are other areas of CLP on the lake, however most of those areas are small, or limited in density and are difficult to successfully treat. Treatment costs are paid for by grants and by a Clearwater River Watershed District assessment from the Cedar PO6 Project (details above).

Treatment of the CLP is planned for late May. If the water within 150 feet your property is treated, there will be a sign posted on your shoreline.

Eurasian Watermilfoil (EWM)

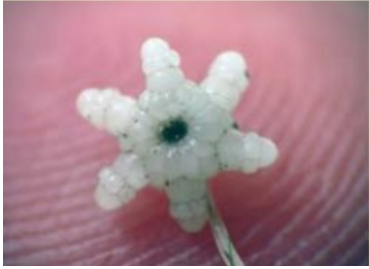
Our aggressive approach—first year was 2011—to control EWM has really paid off. In 2015 we had 35 acres of EWM to treat and this year we have only 2.5 acres (areas in red on the map above). Here is what to expect:

- ◇ We plan to use a granular 2,4-d chemical for most of the areas. The 2,4-d has shorter restrictions for the use of lake water for irrigating broad-leaf.
- ◇ Treatment costs are paid for by grants and by a Clearwater River Watershed District assessment from the Cedar AIS Project (details on the map above).
- ◇ We are planning to treat the EWM before July 4th. If the water within 150 feet of your property is treated, there will be a sign posted on your shoreline.

The AIS treatments, mappings, delineations, and grant applications are managed by the CLCC Water Quality Committee. The Committee, comprised of over 20 of your lake neighbors, works very hard all year long to evaluate and plan for the most cost effective and lake-friendly treatments. Numerous governmental and vendor relationships are skillfully managed.

Starry Stonewort Invading Wright County

by Kathy Jonsrud kjonsrud@yahoo.com | 320-274-2166



Starry stonewort is an invasive species that grows rapidly, forming dense mats on the surface that interfere with recreation. The mats can be over 12 feet thick and potentially displace native species. Some scientists believe that starry stonewort is so dense that it is not suitable habitat for fish and other wildlife. It can be spread by fragments (like Eurasian water milfoil) which makes it particularly dangerous. Accidental movement by people is the most likely means of dispersal. Many of the known infestations occur in high-use waterbodies and near boat accesses.

Starry stonewort was first discovered in Minnesota in 2015 in Lake Koronis-Stearns County, about 1 hour west of Cedar Lake. Since then, about 10 more Minnesota lakes have been identified with an infestation. The impact to Lake Koronis has been serious; they have hundreds of acres of thickly matted (like hay bales) starry stonewort reaching the surface. Treatment has been attempted to clear a path at the Koronis Hwy 55 boat access to reduce the chance of spreading. Some progress has been made on Lake Koronis, but many areas remain infested. The ongoing research findings of the impact of the treatments show that chemical treatments decrease its biomass, but failed to kill—and may have increased the abundance of the bulbils—the primary means of reproduction.

In September, starry stonewort was detected in Lake Sylvia-Wright County by the DNR. This was very bad news, however the infestation was caught early. The infestation is believed to only be in the West Sylvia DNR boat access area and about 0.5 acre in size. In late fall the starry stonewort was pulled and removed by divers with a vacuum device. Two applications of chemical (a copper sulfate product) were applied. The cost of the treatment was about \$28,000. The results from the treatment are mixed; though the biomass was reduced, there still

is starry stonewort present. Work continues with University of Minnesota experts and the DNR to determine next steps.

Detection of starry stonewort in an early infestation can be difficult as it looks very much like the “good weed” chara. We have a good amount of chara in our lake; the key difference is that starry stonewort has a different leaf configuration and the presence of the “starry” bulbils. On Sylvia last fall, it was growing under other vegetation and ultimately identified by trained professionals.

At this time, we are not aware of starry stonewort in Cedar.

What can we do?

- ◇ If you must visit a lake with starry stonewort it is imperative to do a decontamination.

See page 7 for a free local decontamination service. **THOROUGHLY** inspect bunk trailers as it can be spread by fragments.

- ◇ Learn how to identify starry stonewort. Here's a great video: <https://youtu.be/te9iF5OTdtg>
- ◇ Watch the lake carefully for changes in vegetation. Report any suspicious vegetation to Kathy Jonsrud (kjonsrud@yahoo.com) or Glenn Baird (glennabaird@gmail.com).

Starry Stonewort

- ◇ Close-by infestations in Koronis and Sylvia
- ◇ Spreads by fragments
- ◇ Wicked thick, tall mats that come to surface
- ◇ Check out latest University of Minnesota Research at www.maisrc.umn.edu
- ◇ Has the watercraft or equipment been in an infested lake?

BE SAFE and DECONTAMINATE

Starry Stonewort and Zebra Mussels are very close to Cedar!

**Starry Stonewort | Sylvia
Zebra Mussels | Clearwater, John, and Sylvia**

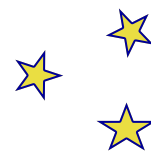
**If you have been there....decontaminate!
Tell your guests/renters to decontaminate!**

See page 7 for information about free local decontamination





CLCC VISIONARIES



The Cedar Lake Visionary Fund is a great way to donate to the CLCC. CLCC is a 501(c)(3) tax exempt organization, so your donations are tax deductible. Our Visionary Fund was started in 2010 and has become an important cornerstone of making a difference on Cedar Lake. Our Visionary contributions in 2016 shattered all past records with a total of \$14,292 in contributions.

Add a bit more to your dues and become a Visionary

As we look forward to another summer on the lake, please consider adding a bit more to your CLCC dues payment and join the Visionaries. We have many sustaining members—those who have made multiple contributions. When donors reach a higher visionary category with multiple donations, they will be recognized in that higher category.

Your contribution will be directed to the fund of your choice: General, Walleye Stocking and Water Quality. Payments can be made either by check or very conveniently online. The CLCC website (www.cedarlakeecc.org) has a tab for donating electronically using Pay Pal. Please support this program by donating to the fund of your choice. For further information, contact CLCC Vice President Karen Lohn (karenlohn@boreal.org 320-274-2858).

THANKS TO ALL WHO HAVE CONTRIBUTED!

Visionary Contributions Since November 2016 and Lifetime Visionary

SILVER (up to \$99)

Scott Brooks & Renee Biaanchi
Dan & Kris Gendreau*
Dan & Mary Motzko
Mark & Cindy Pederson
Steve & Debbie Tobako*

GOLD (\$100 to \$499)

Brian & Heidi Anderson*
Bill & Delores Burke*
John Cornelius & Helen Honmyhr
Kale & JoAnn Danberg
Brian & Elizabeth Hace
Bob & Lorraine Johnson
Larry & Melanie Kramer*
Don & Holly Linn*
Bob & Karen Lohn*
Jim & Judy Martin*
Rick & Tammy Nelson*
Dave & Claudette Prybilla
Dennis & Kathryne Smaagaard*

PLATINUM (\$500 to \$999)

Bill & Terri Anderson
Ron & Linda Dircks*
Karl & Mary Leslie*
Charles & Judi Vinar*

LIFETIME (\$1,000 plus)

Bill Arendt & Mary Ellen Wells*
Glenn & Liz Baird*
Bruce & Cathy Campbell*
Arlan and Janet Daniel*
Dick & Mary Beth Ebert*
Mark & Julie Grimme*
Mike & Laurie Hankee*
Orv & Kathy Jonsrud*
Christa Lane-Larsen*
Terry & Christine Morse*
Scott & Chris Nelson*
Steve & Paula Ostrom*
Dave & Jan Usset*
Bill & Ruth Westhoff*
RJ & Sue Wolf*

** Indicates Sustaining Member with multiple contributions in that category. When donors reach a higher visionary category with multiple donations, they will be recognized in that higher category.*



• Winterization
• Storage • Service
Boats, Motors,
Snowmobiles, ATVs,
Watercraft

Service & Repair
320-274-8688
1100 Business Blvd.,
Annandale Business Park,
(off Hwy. 55 E)



Newsletter and Website Services

The CLCC newsletter is published three times a year (April, July & November). A copy is also posted on our website for future reference. Kathy Jonsrud is the editor of the newsletter. Mark Trostad is in charge of the website and e-mail notifications. We can support up to two emails per family. Updates to emails (and other directory information) should be sent to Liz Baird, lizbaird22@gmail.com. Thanks Kathy, Liz, and Mark for your efforts.

CLCC Fishing Contest | Walter is Waiting for You!



Part of the fun of catching fish on Cedar is our enduring Fishing Contest.

Here's the scoop:

- ◇ Contest runs from May 13th to September 5th 2017
- ◇ Bring your lunker for weigh-in at Dean and Kathy Nicholson's 8879 Iresfeld (near Schroeder Park) 320-274-3516
- ◇ Usual prize categories are for walleye, bass, northern pike, crappie, and sunfish—but judges are impressed by all the fish in our lake.
- ◇ Cash prizes awarded at the Annual Member Meeting, September 16th, 2017 9am, Corinna Township.



2016 1st Place Sunfish | Ella Westhoff and proud grandpa Bill Westhoff

All ages encouraged to join the fun!

Caught on Cedar, and yes, I threw him back | Gerry O'Keefe

FREE Aquatic Invasive Species Decontamination Service Annandale 7 days a week 10am to 7pm

Again this year there is a free aquatic invasive species (AIS) decontamination service for water equipment. The service is a cooperative effort between Wright Soil and Water (AIS Prevention Funding) and Bishop AIS Services. The service is planned to be available starting in early May.

Has your watercraft been to a different lake? Are friends and family bringing their boat or jet ski to Cedar? Are you planning on purchasing used water equipment (especially docks or lifts)?

If the answer is yes, be sure to take advantage of the FREE AIS decontamination service available in Annandale.



WHERE: Anchor Dock and Lift Storage Facility, 240 Poplar Lane South, Annandale (just south of 55 behind Classic Rides and Rods) Watch for the bright lime green signs!



WHEN: Seven days a week, 10am to 7pm

HOW LONG DOES IT TAKE?: Smaller boats take about 10 minutes, larger vessels 20-30 minutes.

Are guests bringing a watercraft to Cedar? Consider making it part of the routine to have it decontaminated (free local service) before launching in our lake.

Water Quality Committee

by Kathy Jonsrud kjonsrud@yahoo.com | 320-274-2166

Proposed Wright County Mandatory AIS Decontamination Pilot For Sylvia, John, and Pleasant

Over the winter, there has been activity to establish a mandatory aquatic invasive species decontamination pilot for select lakes in Wright County. The Greater Lake Sylvia Association has been leading the effort. Sometimes called "Float the Boat" the project proposes to require decontamination/inspection when using (entering and exiting) Sylvia, John, and Pleasant. Trailers and boats would be dunked in a hydrogen peroxide solution to get at all vegetation—especially vegetation caught in bunk trailers.

As of this writing, the decontamination pilot has not been finalized. The DNR and Wright County are actively engaged and there is a great deal of work being done to make the decontamination pilot become a reality. Below is a summary of activity:

- ◇ The City of Annandale has agreed to provide a one acre decontamination site in the Annandale Industrial Park (just north of Hwy 55). Two dunk tanks, office space, and public restrooms are part of the proposed design.
- ◇ Corinna and Southside Townships, Wright County AIS Task Force, and MN COLA have supported the pilot.
- ◇ A Wright County Commissioner's subcommittee has instructed the county attorney to draft an ordinance for the project and there are ongoing meetings.
- ◇ The Minnesota Aquatic Invasive Species Research Center (U of M) and other AIS experts are engaged.
- ◇ It is anticipated that the Wright County mobile decon service (hot water and pressure wash) will be integrated into the pilot.
- ◇ The DNR is reviewing the project.
- ◇ A sizable grant from the Initiative Foundation has been applied for (\$500,000+ depending on final design). The grant is in the final stages of approval, pending DNR approval.
- ◇ A July 2017 implementation is targeted.

The CLCC Board continues to monitor the progress of the pilot.

Here are some common questions about the pilot:

Q: How were the lakes for the pilot decided on?

A: Sylvia (has stary stonewort, zebra mussel, CLP, and EWM) is leading the project, and the Initiative Foundation suggested John (has zebra mussels and eurasian water milfoil) and Pleasant (only has curly leaf pondweed).

Q: Is the mandatory decontamination for entering *and* exiting the three lakes?

A: Yes, as of this writing, the plans are

to require the decontamination process to enter and upon exiting the three pilot lakes.

Q: What is the process to confirm a boat/trailer has been decontaminated? Enforcement?

A: After initial decontamination, the owner would have a letter to place on the vehicle dashboard and a two-part token (one part must be placed in drop box at launch). Records would be kept of track exiting decontamination. Enforcement is proposed to be managed by Wright County Sherriff's office. Fines of up to \$1,000 are being explored.

Q: Can other lakes join or will the project be expanded?

A: For 2017 (or initial start up) no other lakes are planned. Hopefully results and community acceptance will be positive and more lakes will be included as the project matures.

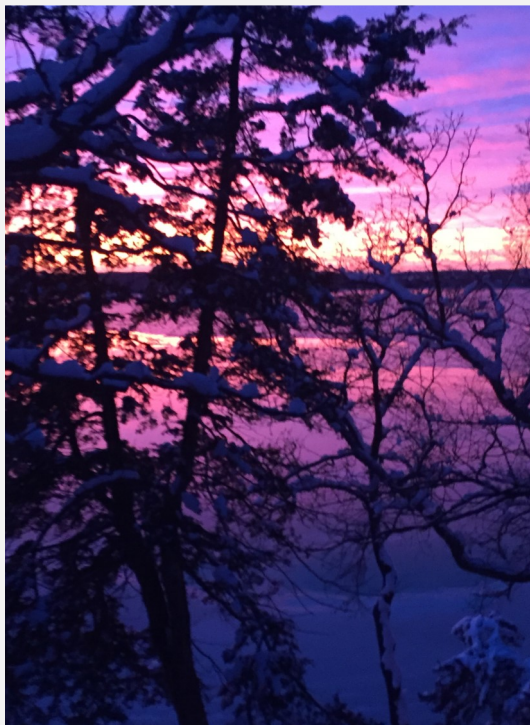
Zebra Mussel Warriors Needed

by Glenn Baird glennabaird@gmail.com | 612-599-4639

Again this year we will be monitoring for zebra mussels. For those who have monitored in the past, please plan to get your tube monitors in the water. They should be about one foot off the bottom and—if you can—in a shady area. We also are planning for our annual hands-on-search at the end of the season.

If you have lost your monitoring device, or wish to join in the effort, please contact Glenn Baird at glennabaird@gmail.com

Where on Cedar?



All lake people enjoy photographs of the beauty and fun we share on the lake.

Think you know the lake well? Can you figure out where this photo was taken from? (answers on page 14).

We would love to have your favorite electronic photo of Cedar—either a scenic photo or your favorite photo of lake fun.

Send to Kathy Jonsrud
CLCC Newsletter Editor
kjonsrud@yahoo.com

Your Septic | Out of Sight but Not Out of Mind

Sean Riley | Zoning Administrator, Wright County Planning and Zoning (reprint from Aril 2015)

Almost all of us with lake property in Wright County have an individual septic system or are part of a small communal septic. Both of these systems have been proven to be very effective in preserving water quality when property maintained. If you are like most homeowners, you probably never give much thought to what happens when waste goes down your drain.

Proper operation and maintenance of a septic system can have a significant impact on how well it works and how long it lasts. And of course, preventing groundwater pollution from a failing septic system is a priority for our lake community.

Wright County took steps over twenty years ago to address septic concerns. The regulations have specific requirements and a permitting process for those designing and installing systems. For lake property owners with existing individual systems, the regulations focus on two major components:

- ◇ When a property is sold, or when a permit is obtained for lake property improvements, the septic must be professionally inspected to ensure adequate conformance. This is also required for the sale of any property in Wright County.
- ◇ Septic tanks must be professionally inspected at least every three years. Solids must be removed from septic tanks to allow the system to function properly.

Wright County Planning and Zoning has a great deal of septic system information on their website, along with a list of septic system professionals www.co.wrightwright.mn.us.

Septic Systems Demystified and Simple Maintenance Dos and Don'ts

For many of us, our lake home is our first experience with a septic system. There are two main parts in a basic septic system: the septic tank and the drainfield. The waste from our home goes into a septic tank. The floating particles form the "scum" layer in the tank and the solids settle out. The water then flows through the system baffles out to the drain field.

Most of the soil in Wright County is very effective at filtering the water that goes into the drain field. The water from the drain field seeps through the soil and goes back into the groundwater.

Septic System Dos and Don'ts

DO

Do be mindful of water conservation. Toilets use 35% of our household water, washing clothes another 20%, and leaks account for 15%.

Do have your septic tank inspected at least every 3 years. Families living full-time should plan to pump their system at least every 3 years. Seasonal and small families may be able to pump less frequently.

Do keep a detailed record of repairs, pumping, inspections, and permits.

Do use liquid detergents and mild household chemicals. Powders may not completely dissolve. Use bleach and antimicrobial soaps sparingly to preserve the important biological balance in your system.

Do wipe dishes and cooking pans before washing or rinsing to reduce grease and food particles in your system. Use sink and shower strainers to reduce particulate matter from entering your system.

Do spread your laundry loads over the week. Many loads in one day can overwhelm your system and disturb the scum and solid waste layer in your tank.

DON'T

Don't go down a septic tank.

Don't allow anyone to drive or park over any part of the system.

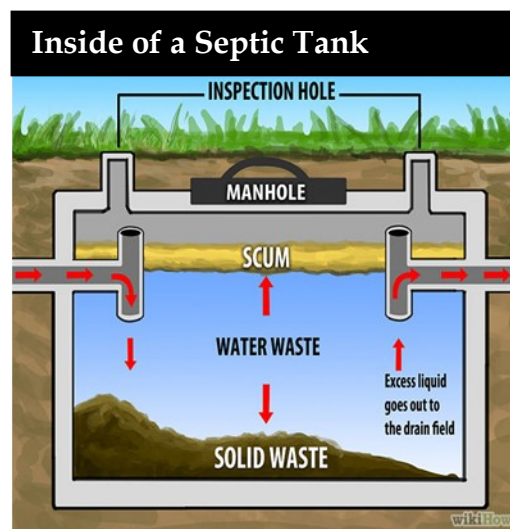
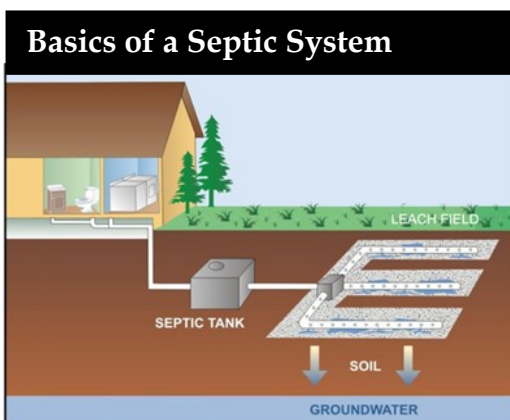
Don't plant anything over or near the drainfield except grass. Roots may clog and damage the drain lines. Never cover the drainfield with concrete or asphalt.

Don't flush anything down the toilet except toilet paper. Feminine products, facial tissue, hygienic wipes, etc. don't dissolve and can adversely impact your system.

Don't flush medications down the toilet. Wright County Sheriff's office has a medication disposal service www.co.wright.mn.us/DocumentCenter/View/7271

Don't use a garbage disposal. If you do use a disposal, plan on pumping each year.

Don't use septic tank additives. Under normal operating conditions, these products do not help and some may cause problems.



CALENDAR OF 2017 CLCC EVENTS

Mark your calendar!

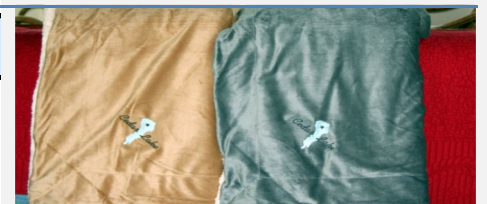
April 22 nd	Board of Director's Meeting	All welcome! 9am Corinna Town Hall 9801 Ireland Ave NW
May 13 th	Fishing Contest Begins	Weigh your fish with Dean and Kathy Nicholson 8979 Iresfeld 320-274-3516
June 10 th	Board of Director's Meeting	All welcome! 9am Corinna Town Hall 9801 Ireland Ave NW
July 4 th	Boat Parade and Dock Decorating Contest	2pm North side of sandbar
July 15 th	Picnic and Music on the Water	Picnic 12 noon True Friends (formerly Camp Courage) Music on the Water 2 to 6pm Sandbar
August 5 th	State Wide "Starry Search"	State wide effort to search for starry stonewort infestations. Watch for more details for search on Cedar.
September 5 th	Fishing Contest Ends Winners Announced at Annual Member Meeting Sept 16 th	Weigh your fish with Dean and Kathy Nicholson 8979 Iresfeld 320-274-3516
September 16 th	Annual Member Meeting and Board of Director's Meeting	All welcome! 9am Corinna Town Hall 9801 Ireland Ave NW
November 11 th	Board of Director's Meeting	All welcome! 9am Corinna Town Hall 9801 Ireland Ave NW

Get To Know The CLCC Board and Officers

	Position	Board of Director Term Ends	E-Mail	Telephone
Kathy Miron	President and Director	Sept 2019	mironkg72@gmail.com	763-688-0705
Karen Lohn	Vice President and Director	Sept 2019	karenlohn@boreal.org	320-274-2858
Christa Lane-Larsen	Secretary and Director	Sept 2018	clanelarsen@gmail.com	612-940-1080
Liz Baird	Treasurer	N/A	lizbaird22@gmail.com	612-599-4128
William Arendt	Director	Sept 2017	wfa12345@aol.com	320-274-2422
Glenn Baird	Director	Sept 2017	glennabaird@gmail.com	612-599-4639
Orv Jonsrud	Director	Sept 2017	ojonsrud@yahoo.com	320-274-2166
Julie Grimme	Director	Sept 2018	jul9hi@aol.com	612-805-0081
Chris Nelson	Director	Sept 2018	cnelson@foam-industries.com	763-742-2742
Karl Leslie	Director	Sept 2018	karl.leslie@wolterskluwer.com	320-274-3077
Elizabeth Hace	Director	Sept 2020	eahace@embarqmail.com	952-443-2513
Jim Harrison	Director	Sept 2020	James.b.harrison@msn.com	320-274-1314
Warren Schultz	Director	Sept 2020	hbi.warren@gmail.com	612-868-2938

Cedar Lake Merchandise is Available

We will be at all Cedar Lake Conservation Club events with t-shirts, towels, sweatshirts, and denim shirts in a range of sizes and colors. We also have towels and fleece throw blankets. If you know you would like an item in a specific size and color please contact **Julie Grimme** jul9hi@aol.com or **612-805-0081**.



Support Those Who Support CLCC

Let Us Exceed Your Expectations!



**ANCHOR
DOCK & LIFT**


www.anchor-dock.com 

World Class Products. Exceptional Service

DOCKS | LIFTS | RECREATION | RENTAL

960 Elm Street E, Hwy 55 | Annandale (320) 274-6500


*Your Mother-Daughter Team in
the Heart of the Lakes Area*



Marci Segner
320-266-1084
msegner@remax.net

Joy Carlson
320-266-1086
joycarlson@remax.net
joyandmarcihomes.com

RE/MAX
FIDELITY




*Wear
Cedar Lake*

Lake Mini and Original Lake Pendant
Sterling Silver, 14k White and Yellow Gold

the original
LAKE PENDANT

Miller's Jewelry

MAIN STREET, ANNANDALE 274-5313 

*Mention you saw their ad in our
newsletter and thank them!*

Cottage Gourmets
food for the events in your life

Barbara Westman
Website: cottagelgourmets.com
Phone: 320-493-0416
barb.westman@gmail.com

Support Those Who Support CLCC

Edina Realty®



Lakeshore, Residential & Land Specialist

Jim Splinter
REALTOR®

Cell: 320-980-0560
Fax: 763-682-6922

www.jimsplinter.edinarealty.com
jimsplinter@edinarealty.com





Two Cedar Lake properties I listed in 2016 and both sold in less than 30 days



IntegriPrint

DESIGN / PRINT / MARKETING

Helping to make clients look GREAT since 1994

Scan to visit our site now



our site now

309 12th Ave S | Buffalo, MN 55313
763.682.3750 | www.IntegriPrint.com



Windows and Doors

Built around you.™

WINDOWS AND DOORS WITH THE POWER TO TRANSFORM

Marvin® Windows and Doors is a world leader in providing products with the ability to transform projects into truly unique living spaces. When choosing the right windows and doors for your project, count on your local Marvin® experts, **Maple Lake Lumber Co.**, for the perfect solution.

320-963-3612
www.maplelakelumber.com

120 Oak Ave S.
Maple Lake, MN 55358

MAPLE LAKE LUMBER CO.



J&J MARINE

WE ROCK THE BOAT!

14882 State Hwy. 55, South Haven, MN 55382

ALLUMACRAFT



Godfrey

PORTHOLE BOATS



HUSQVARNA



YAMAHA

GENERATORS



SALES - SERVICE
PARTS - ACCESSORIES

YAMAHA

E-TEC

MERCURY

MARINE

SUZUKI

MARINE



PORTA-DOCK

320-236-3625

www.jjmarineinc.com

Mention you saw their ad in our newsletter and thank them!

Support Those Who Support CLCC

We know the Annandale Lakes Area Real Estate Market



If you're looking to buy or sell a lake home or cabin, give us a call today!



Annandale • RemaxGo.com • 320-274-2233



LAKE CENTRAL
INSURANCE SERVICES
INVESTMENTS

Securities and Insurance offered through Centa Investment Services, LLC, member FINRA/SIPC. Investments are not FDIC Insured-Not a Deposit-Not Insured by any Federal Government Agency-May Lose Value-Not Financial Institution Guaranteed.

Auto	IRAs
Home	401Ks
Life / Health	Mutual Funds
Business	

www.mylakecentral.com

Maple Lake 320-963-3163 Annandale 320-274-8216 Clearwater 320-558-2480

Mention you saw their ad in our newsletter and thank them!

Maple Lake Area:
400 State Hwy 55 NW
Maple Lake, MN 55358
Ph: 320.963.2178

Metro Area:
4700 Osseo Rd
Minneapolis, MN 55430
Ph: 612.588.4000



Lawn Sprinkler Design, Installation and Service
www.carefreelawnmn.com
info@carefreesprinklers.com

WE CREATE **Outdoor DREAMS**



Meet with one of our Landscaping Experts to create a plan that will transform your outdoor space from simply functional to Truly Exceptional!

Backyard Reflections, Inc.
We Create Outdoor Dreams

320-274-6336
www.backyardmn.com

Lake Property Landscaping Specialist

CLCC MEMBERSHIP COMMITTEE

By Karen Lohn, CLCC Vice-President karenlohn@boreal.org | 320-274-2858

Pay Your Dues by June 1st and Get Your 2017 Lake Directory Mailed

What a delight to visit and greet new residents on the lake, especially to introduce them to CLCC and welcome their membership! Seems new and old neighbors appreciate the unique beauty and quality of this gem, Cedar Lake.

Membership in our association is robust, with about 80% of the lake residents as members. This support and participation sustains efforts to preserve and protect the quality of our lake, to encourage wildlife in their habitat, and to build a strong lake community. Much appreciation to all of our lake association members!

Dues are \$25 per calendar year and many “give a bit more” as a Visionary of Cedar Lake. **We do not send out individual bills; we rely on this newsletter as the reminder.**

Please take a moment right now to pay your dues before it slips your mind. If you pay your dues by June 1st, you will receive the 2017 lake directory in the mail. You can use the form on the back of this newsletter, or pay online at www.cedarlakeecc.org

TWO EASY WAYS TO PAY DUES



Fill out the dues form on the last page of this newsletter and mail in



Online payment at www.cedarlakeecc.org
(see link on left hand side)

Join or Renew Your Membership



CLCC Treasurer's Report

Fund Balances at 3/20/2017

<u>FUNDS</u>	<u>AMOUNT</u>
Water Quality	\$39,538.43
Walleye Stocking	\$938.19
General CLCC	\$7,509.51
Dave Larsen Visionary	<u>\$2,905.44</u>
TOTAL	\$50,891.57

Thanks to Liz Baird —Treasurer of CLCC. Accurate and timely financial recordings are critical to maintain the trust and confidence of members. An outside financial review is performed every two years (last completed October 2016) to ensure that funds and transactions are accurate.

Updated Lake Directory Available in June

CLCC maintains a lake directory which is available to CLCC members. The directory includes a map identifying resident locations and contact information. The directory is updated every 2 years and 2017 is a year for an update.

Please pay your dues by June 1st and an added bonus is that your directory will be mailed to you. Any updates to the directory should be sent to Liz Baird (lizbaird22@gmail.com) or CLCC, PO Box 192, Annandale, MN 55302.

If you do not want your contact information in the CLCC directory, please contact Liz Baird (lizbaird22@gmail.com) or CLCC, PO Box 192, Annandale, MN 55302 by June 1st, 2017.

Where on Cedar from page 8?

The photo is looking west at sunset from the north side of the lake a bit before ice-out. The display of dazzling purples and blues is just as the sun sets and lasts a matter of seconds. Photographer is Karen Lohn—CLCC Vice President.

Support Those Who Support CLCC

We Are Seriously Local
Marketing Cedar Lake for over 40 years,
stop by and pick up a map!



OAK REALTY

Annandale Office 720 Elm St. E (320) 274.5737
Maple Lake Office 501 Maple Ave. N (320) 963.2088
www.oakrealtymn.com


Find us on  

Coffee ~ Wine Bar ~ Beer


cafe Jules

NEW Bistro!

Food & Friends



20 Cedar Street E
Annandale, MN
Located next to City Hall
320.274.7477





320-274-GIFT

FINE GIFTS & GREAT FINDS

Jim King, Owner
atg@lakedalelink.net

10 Oak Ave N Annandale, MN 55302
www.allthingsgoodmn.com

ELIMINATE LAKE WEEDS



The WeedRoller PRO moves in a slow, broad arc, pivoting 300°. As its linked rollers rotate along the lake bottom, they detach existing weeds and agitate the lake bed. This prevents weed growth and allows for a clean, sandy lake bottom and a great swimming area.

== CRARY ==

WeedRoller PRO
Lakeside Innovations WeedRoller
Your WeedRoller Experts!
612-222-2487
www.lakeweederoller.com

Thinking of "Buying" or "Selling"
Your Cedar Lake Property or Other Real Estate?
Work with a Cedar Lake Homeowner/Realtor



Terri Erickson - Realtor
612.889.2808
terriwestmetro@kw.com
westmetroericksongroup.com



kw KELLERWILLIAMS.
CLASSIC REALTY NW

Cedar Lake Conservation Club
P.O.Box 192
Annandale, MN 55302

PRSR STD
US POSTAGE
PAID
BUFFALO, MN
PERMIT NO. 76

In This Issue

- Picnic and Music on the Water pg 2
- 2017 AIS Treatment pg 4
- Free Local AIS Decon pg 7
- Fishing Contest pg 7
- Mandatory Decon Pilot pg 8
- Your Lake Home Septic pg 9
- 2017 Events pg 10
- Support Local Businesses (see ads inside)

~~ Time to Pay 2017 Dues~~Consider "Adding a Bit More"~~

CLCC needs your support. Annual dues to CLCC are \$25, based on the calendar year, and can be paid by check with the form below or electronically online. Visit the CLCC website (www.cedarlakecc.org) and click on the "Donate" tab under "Dues" and the "Donate" tab under "Visionary" to make your contributions.

CLCC is a 501(c)(3) tax-exempt organization, so dues and contributions are tax deductible.



Dues Payment \$25.00

YES! I can give a bit more (circle desired fund) : _____
Walleye Stocking Fund Water Quality General

TOTAL: _____

Name: _____

Home Address: _____

Lake Address: _____

Preferred Phone: _____

Email: _____ Additional Email _____

Please include this form if paying by check and make checks payable to: Cedar Lake Conservation Club or CLCC.

Mail to: CLCC, PO Box 192, Annandale, MN 55302

Online dues payment is available at www.cedarlakecc.org