

YARNELL WATER IMPROVEMENT ASSOCIATION LATERAL REPLACEMENTS

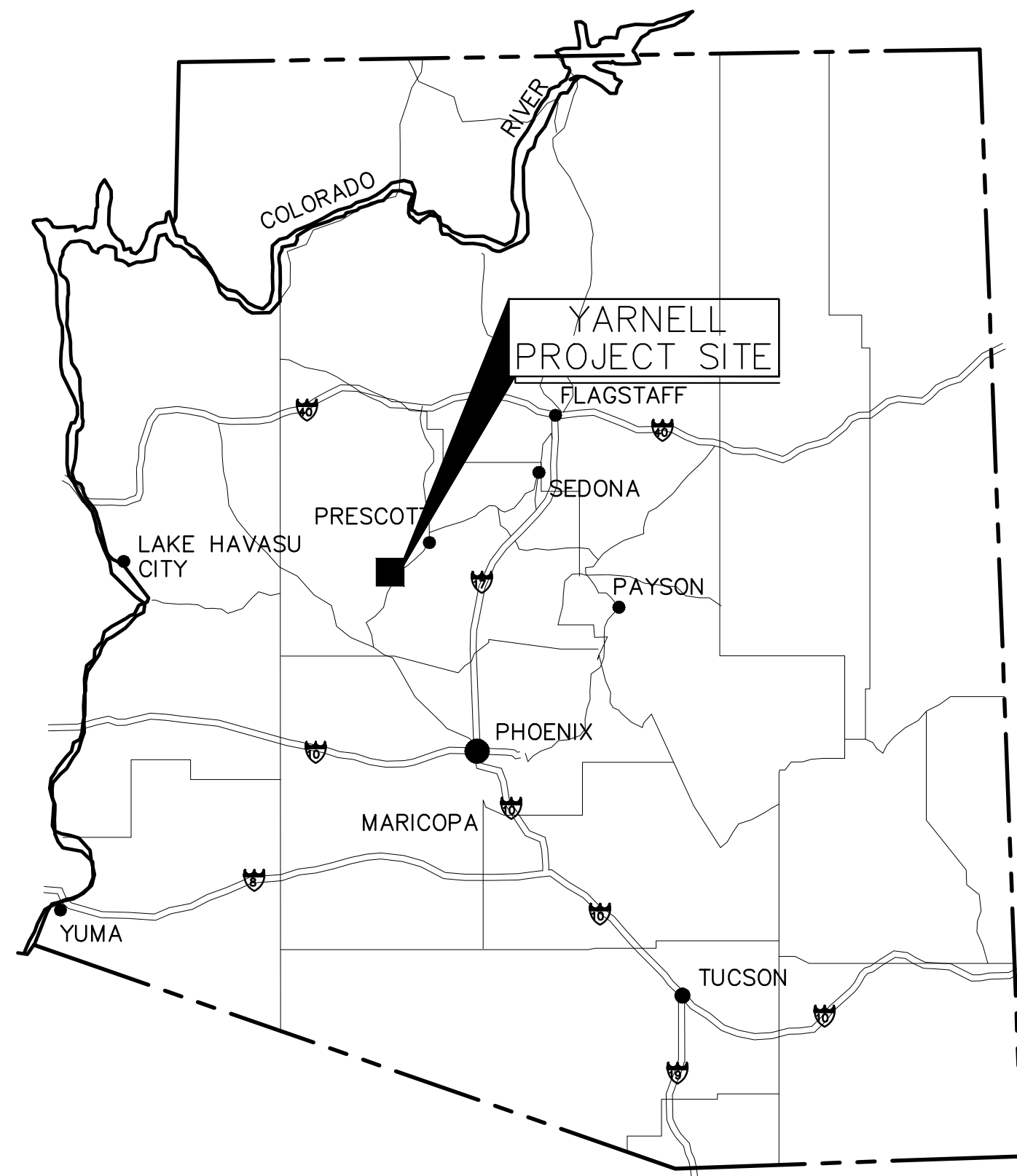
22609 LOOKA WAY
YARNELL, AZ 85362

JUNE 2024
VOLUME 1 OF 2



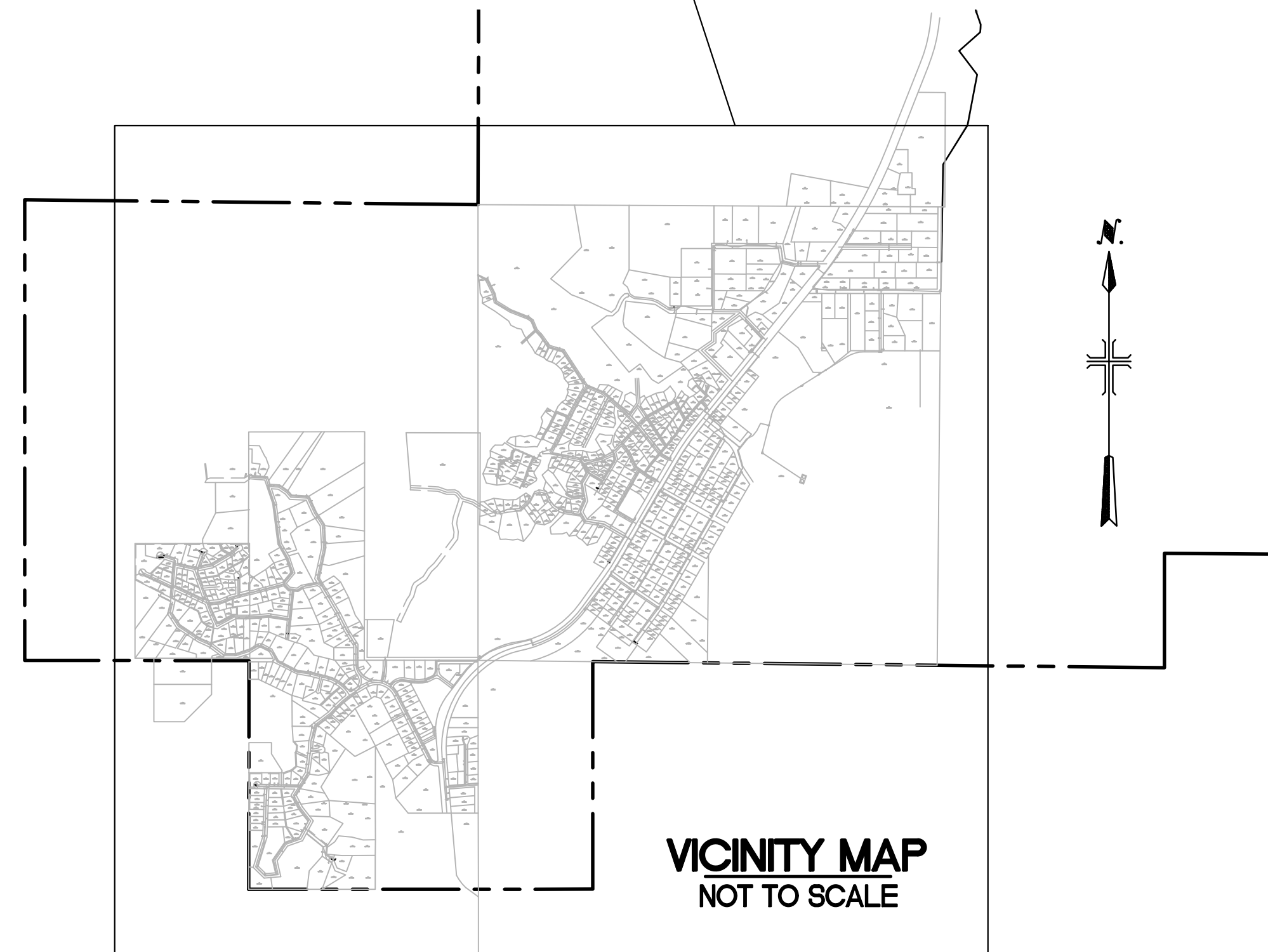
VALENTINE
Environmental Engineers, LLC

15845 South 46th Street, Suite 144 Phoenix, Arizona 85048
Phone: (480) 283-8991 Fax: (480) 283-0082



LOCATION MAP
NOT TO SCALE

YARNELL
PROJECT AREAS



VICINITY MAP
NOT TO SCALE

SHEET INDEX

SHEET	DRAWING	DESCRIPTION
1.	G0	COVER SHEET; KEY MAP
2.	C1.0	ENLARGED KEY MAP
3.	C2.0	LATERAL REPLACEMENTS PLAN I
4.	C3.0	LATERAL REPLACEMENTS PLAN II
5.	C4.0	LATERAL REPLACEMENTS PLAN III
6.	C5.0	LATERAL REPLACEMENTS PLAN IV
7.	C6.0	LATERAL REPLACEMENTS PLAN V
8.	C7.0	LATERAL REPLACEMENTS PLAN VI
9.	C8.0	LATERAL REPLACEMENTS PLAN VII
10.	C9.0	LATERAL REPLACEMENTS PLAN VIII
11.	C10.0	LATERAL REPLACEMENTS PLAN IX
12.	C11.0	LATERAL REPLACEMENTS PLAN X
13.	C12.0	LATERAL REPLACEMENTS PLAN XI
14.	C13.0	LATERAL REPLACEMENTS PLAN XII
15.	C14.0	LATERAL REPLACEMENTS PLAN XIII
16.	C15.0	LATERAL REPLACEMENTS PLAN XIV
17.	C16.0	LATERAL REPLACEMENTS PLAN XV
18.	D1.0	LATERAL REPLACEMENTS DETAIL

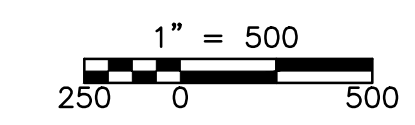
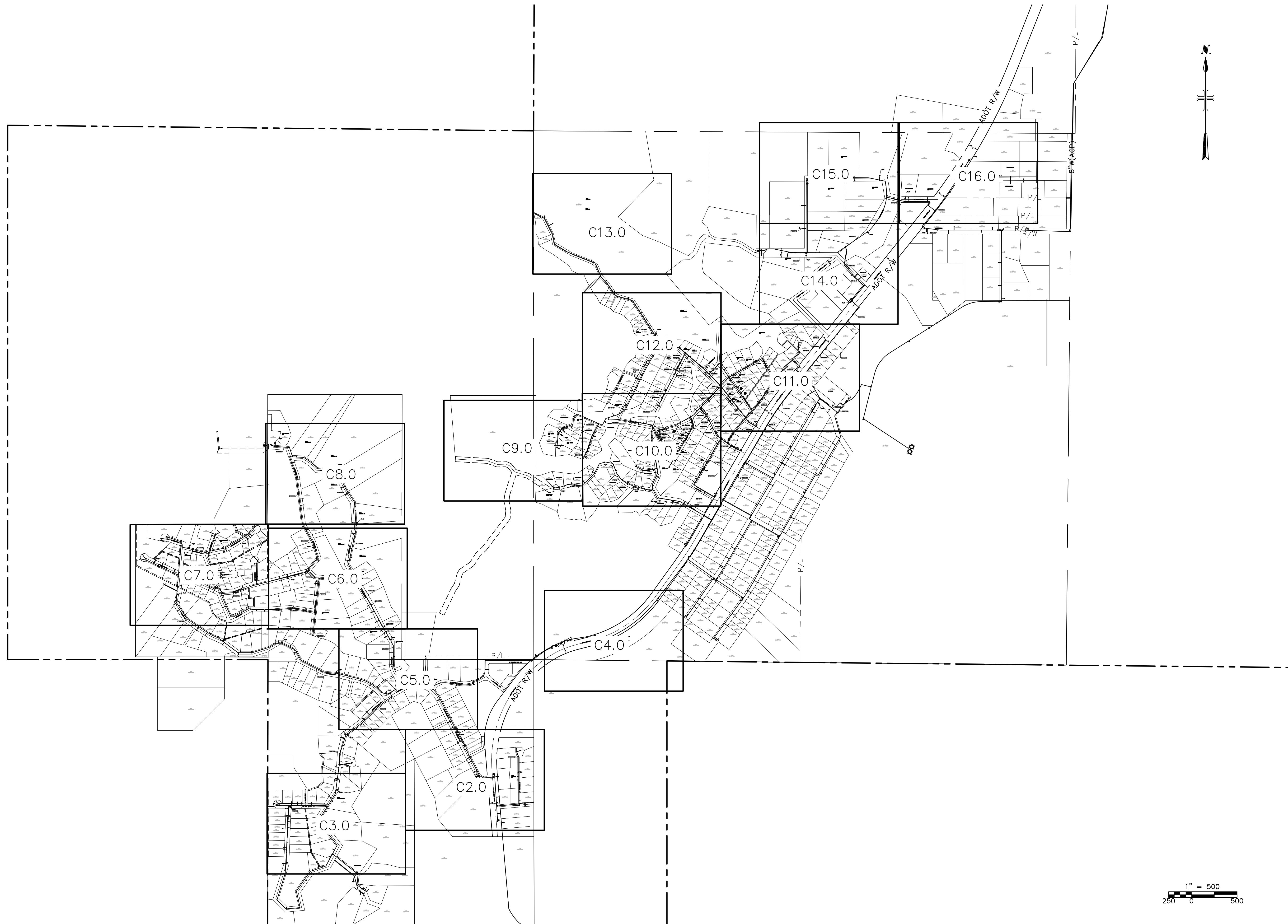
OWNER

YARNELL WATER IMPROVEMENT ASSOCIATION
22609 LOOKA WAY
YARNELL, AZ 85362

ENGINEER

VALENTINE ENVIRONMENTAL ENGINEERS
15845 SOUTH 46TH STREET, SUITE 144
PHOENIX, AZ. 85048
PHONE: (480) 283-8991
FAX: (480) 283-0082

© Copyright, VALENTINE ENVIRONMENTAL ENGINEERS, LLC. 2002-24. This plan document set is the sole property of VALENTINE ENVIRONMENTAL ENGINEERS, LLC. No modifications to these plans, other than adding as-built information, are permitted by anyone other than authorized VEE employees.



VALENTINE
 Environmental Engineers, LLC

15845 South 46th Street, Suite 144 Phoenix, Arizona 85048
 Phone: (480) 283-8991 Fax: (480) 283-0082



REVISIONS				DES	DWN	CKD
NO.	BY	DATE	REMARKS			
				JA		
				JA		
				TAV		

DES JA
 DWN JA
 CKD TAV

YARNELL WATER IMPROVEMENT ASSOCIATION
 LATERAL REPLACEMENTS

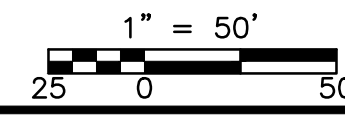
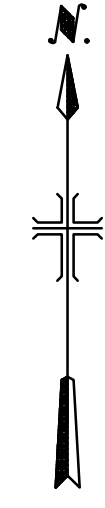
CIVIL
 ENLARGED KEY MAP
 SCALE: 1" = 500'

COPYRIGHT © 2024
 DATE: JUNE 2024
C1.0
 SHEET 2 OF 18
 CAD FILE: C1.0.DWG

YARNELL WATER IMPROVEMENT ASSOCIATION - LATERAL REPLACEMENTS

CONSTRUCTION NOTES

- 1 DEMOLISH AND REMOVE EXISTING LATERAL. COORDINATE WITH YWA ON SHUTDOWN. PROVIDE NEW LATERAL IN ACCORDANCE WITH DETAIL 1 ON SHEET D1.0.



COPYRIGHT © 2024
 DATE: JUNE 2024
C2.0
 SHEET 3 OF 18
 CAD FILE: C2.0.DWG



YARNELL WATER IMPROVEMENT ASSOCIATION - LATERAL REPLACEMENTS

© Copyright, VALENTINE ENVIRONMENTAL ENGINEERS, LLC. 2002-24. This plan document set is the sole property of VALENTINE ENVIRONMENTAL ENGINEERS, LLC. No modifications to these plans, other than adding as-built information, are permitted by anyone other than authorized VEE employees.

VALENTINE
 Environmental Engineers, LLC
 15845 South 46th Street, Suite 144 Phoenix, Arizona 85048
 Phone: (480) 283-8991 Fax: (480) 283-0082



NO.	BY	DATE	REVISIONS	REMARKS

DES	JA
DWN	JA
CKD	TAV

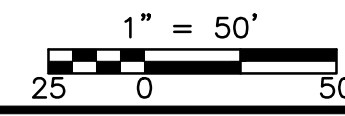
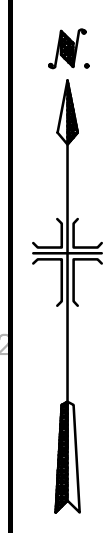
YARNELL WATER IMPROVEMENT ASSOCIATION
 LATERAL REPLACEMENTS

CIVIL

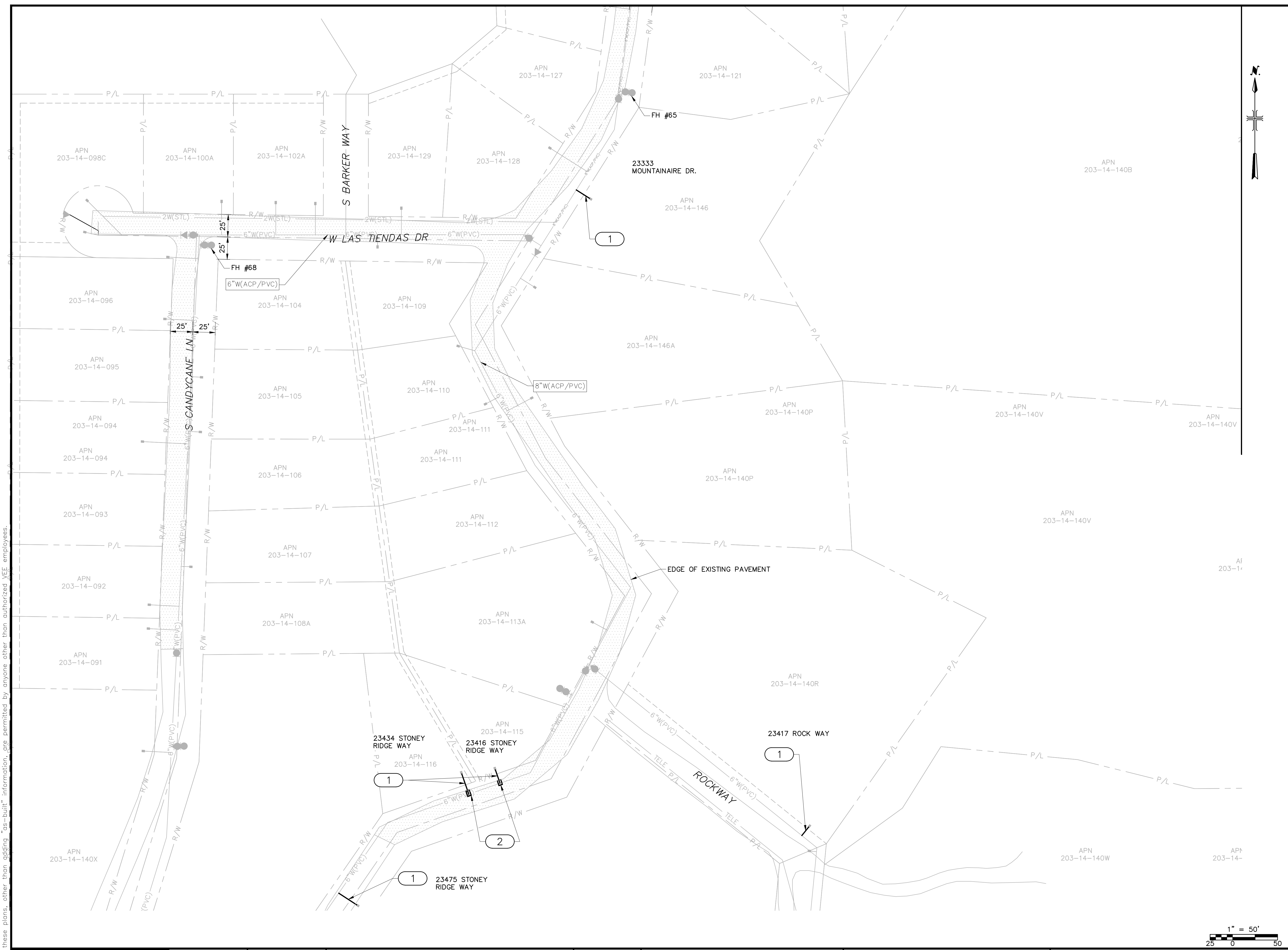
LATERAL REPLACEMENTS: PLAN I
 SCALE: 1" = 50'

CONSTRUCTION NOTES

- 1 DEMOLISH AND REMOVE EXISTING LATERAL. COORDINATE WITH YWA ON SHUTDOWN. PROVIDE NEW LATERAL IN ACCORDANCE WITH DETAIL 1 ON SHEET D1.0.
- 2 SAWCUT, REMOVE AND REPLACE ASPHALT IN ACCORDANCE WITH MAG STD DTL 200-1, T-TOP TRENCH REPAIR



COPYRIGHT © 2024
 DATE: JUNE 2024
C3.0
 SHEET 4 OF 18
 CAD FILE: C3.0.DWG



Copyright, VALENTINE ENVIRONMENTAL ENGINEERS, LLC. 2002-24.
 This plan document set is the sole property of VALENTINE ENVIRONMENTAL ENGINEERS, LLC.
 No modifications to these plans, other than adding, as-built information, are permitted by anyone other than authorized VEE employees.

VALENTINE
 Environmental Engineers, LLC

15845 South 46th Street, Suite 144 Phoenix, Arizona 85048
 Phone: (480) 283-8991 Fax: (480) 283-0082

Professional Engineer
 CERTIFICATE NO. 32324
 TERESA ANN VALENTINE
 State of Arizona

NO.	BY	DATE	REVISIONS	REMARKS

DES JA
 DWN JA
 CKD TAV

YARNELL WATER IMPROVEMENT ASSOCIATION
 LATERAL REPLACEMENTS

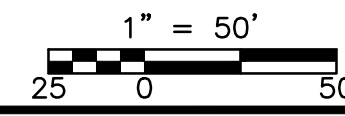
CIVIL

YARNELL WATER IMPROVEMENT ASSOCIATION
 LATERAL REPLACEMENTS
LATERAL REPLACEMENTS: PLAN II
 SCALE: 1" = 50'

YARNELL WATER IMPROVEMENT ASSOCIATION - LATERAL REPLACEMENTS

CONSTRUCTION NOTES

- 1 DEMOLISH AND REMOVE EXISTING LATERAL. COORDINATE WITH YWA ON SHUTDOWN. PROVIDE NEW LATERAL IN ACCORDANCE WITH DETAIL 1 ON SHEET D1.0.



Copyright, VALENTINE ENVIRONMENTAL ENGINEERS, LLC. 2002-24. This plan document set is the sole property of VALENTINE ENVIRONMENTAL ENGINEERS, LLC. No modifications to these plans, other than adding as-built information, are permitted by anyone other than authorized VEE employees.

VALENTINE
Environmental Engineers, LLC

15845 South 46th Street, Suite 144 Phoenix, Arizona 85048
Phone: (480) 283-8991 Fax: (480) 283-0082



NO.	BY	DATE	REVISIONS	REMARKS

DES JA
DWN JA
CKD TAV

YARNELL WATER IMPROVEMENT ASSOCIATION
LATERAL REPLACEMENTS

CIVIL

LATERAL REPLACEMENTS: PLAN III

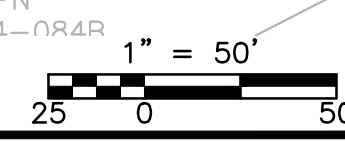
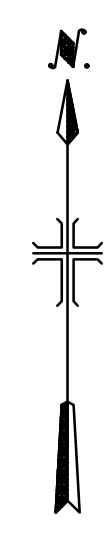
SCALE: 1" = 50'

COPYRIGHT © 2024
DATE: JUNE 2024
C4.0
SHEET 5 OF 18
CAD FILE: C4.0.DWG

YARNELL WATER IMPROVEMENT ASSOCIATION - LATERAL REPLACEMENTS

CONSTRUCTION NOTES

- 1 DEMOLISH AND REMOVE EXISTING LATERAL. COORDINATE WITH YWA ON SHUTDOWN. PROVIDE NEW LATERAL IN ACCORDANCE WITH DETAIL 1 ON SHEET D1.0.
- 2 SAWCUT, REMOVE AND REPLACE ASPHALT IN ACCORDANCE WITH MAG STD DTL 200-1, T-TOP TRENCH REPAIR



Copyright, VALENTINE ENVIRONMENTAL ENGINEERS, LLC. 2002-24. This plan document set is the sole property of VALENTINE ENVIRONMENTAL ENGINEERS, LLC. No modifications to these plans, other than adding as-built information, are permitted by anyone other than authorized VEE employees.

VALENTINE
 Environmental Engineers, LLC

15845 South 46th Street, Suite 144 Phoenix, Arizona 85048
 Phone: (480) 283-8991 Fax: (480) 283-0082



REVISIONS		DES
NO.	BY	DATE

DES	JA
DWN	JA
CKD	TAV

YARNELL WATER IMPROVEMENT ASSOCIATION
 LATERAL REPLACEMENTS

YARNELL WATER IMPROVEMENT ASSOCIATION
 LATERAL REPLACEMENTS

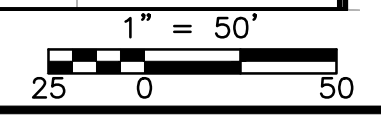
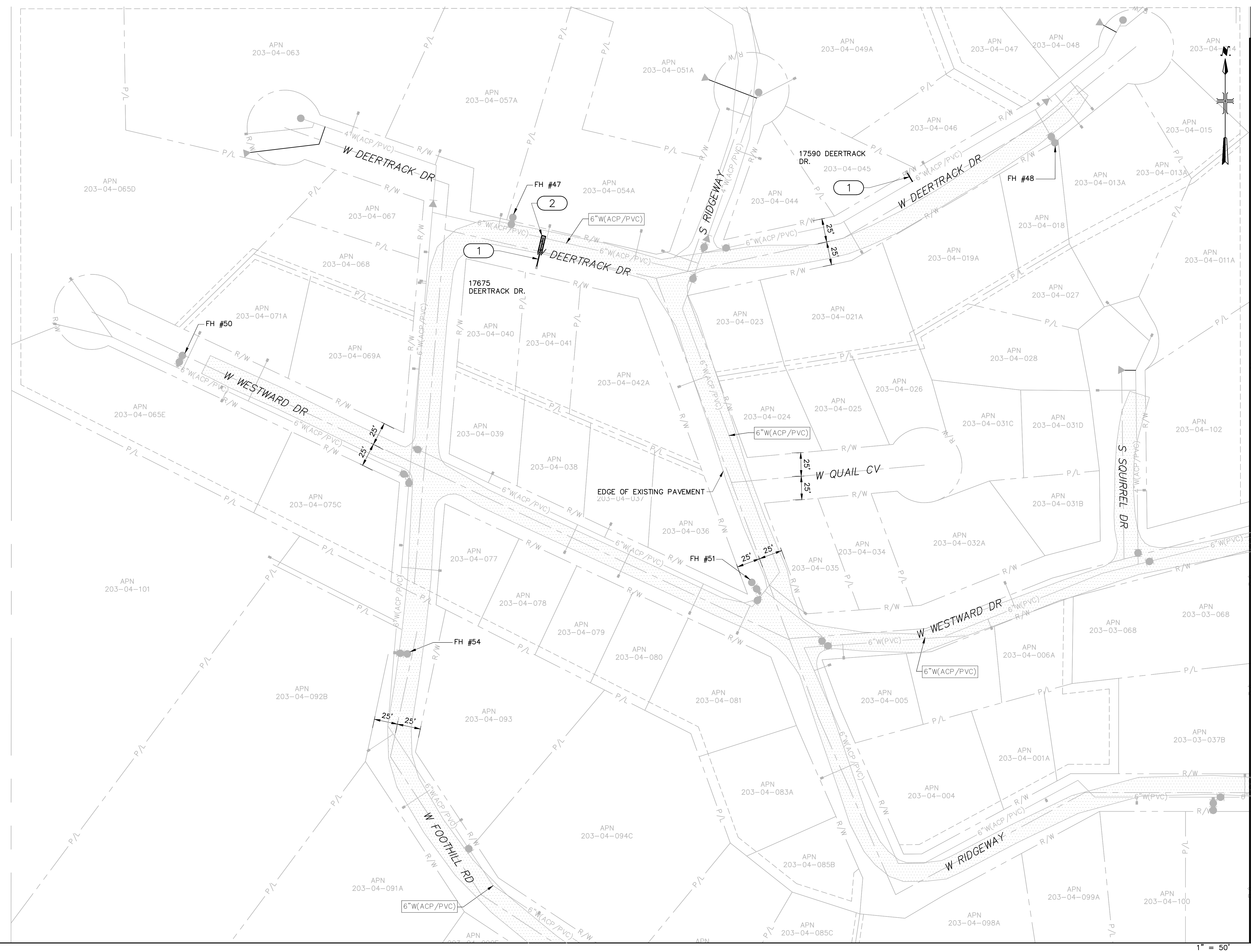
CIVIL
 LATERAL REPLACEMENTS: PLAN IV
 SCALE: 1" = 50'

COPYRIGHT © 2024
 DATE: JUNE 2024
C5.0
 SHEET 6 OF 18
 CAD FILE: C5.0.DWG

YARNELL WATER IMPROVEMENT ASSOCIATION - LATERAL REPLACEMENTS

CONSTRUCTION NOTES

- 1 DEMOLISH AND REMOVE EXISTING LATERAL. COORDINATE WITH YWA ON SHUTDOWN. PROVIDE NEW LATERAL IN ACCORDANCE WITH DETAIL 1 ON SHEET D1.0.
- 2 SAWCUT, REMOVE AND REPLACE ASPHALT IN ACCORDANCE WITH MAG STD DTL 200-1, T-TOP TRENCH REPAIR



Copyright, VALENTINE ENVIRONMENTAL ENGINEERS, LLC. 2002-24. This plan document set is the sole property of VALENTINE ENVIRONMENTAL ENGINEERS, LLC. No modifications to these plans, other than adding as-built information, are permitted by anyone other than authorized VEE employees.

VALENTINE
Environmental Engineers, LLC



REVISIONS			
NO.	BY	DATE	REMARKS

DES	JA
DWN	JA
CKD	TAV

YARNELL WATER IMPROVEMENT ASSOCIATION
LATERAL REPLACEMENTS

LATERAL REPLACEMENTS: PLAN VI

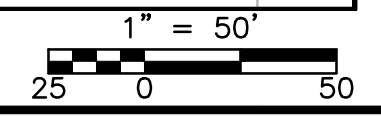
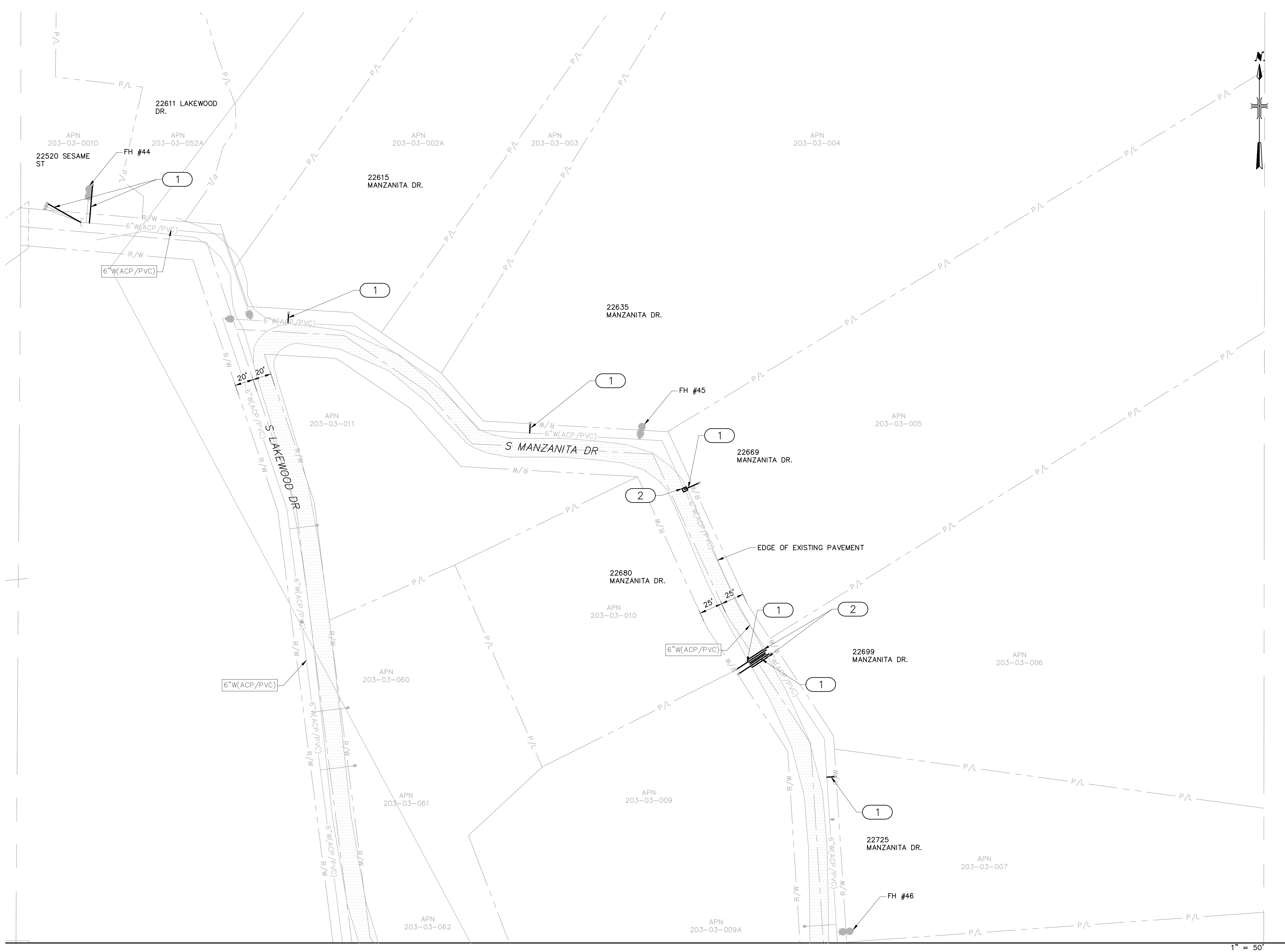
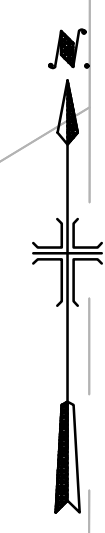
SCALE: 1" = 50'

CIVIL
 COPYRIGHT © 2024
 DATE: JUNE 2024
C7.0
 SHEET 8 OF 18
 CAD FILE: C7.0.DWG

YARNELL WATER IMPROVEMENT ASSOCIATION - LATERAL REPLACEMENTS

CONSTRUCTION NOTES

- 1 DEMOLISH AND REMOVE EXISTING LATERAL. COORDINATE WITH YWA ON SHUTDOWN. PROVIDE NEW LATERAL IN ACCORDANCE WITH DETAIL 1 ON SHEET D1.0.
- 2 SAWCUT, REMOVE AND REPLACE ASPHALT IN ACCORDANCE WITH MAG STD DTL 200-1, T-TOP TRENCH REPAIR



Copyright, VALENTINE ENVIRONMENTAL ENGINEERS, LLC. 2002-24. This plan document set is the sole property of VALENTINE ENVIRONMENTAL ENGINEERS, LLC. No modifications to these plans, other than adding as-built information, are permitted by anyone other than authorized VEE employees.

VALENTINE
Environmental Engineers, LLC



15845 South 46th Street, Suite 144 Phoenix, Arizona 85048
Phone: (480) 283-8991 Fax: (480) 283-0082

NO.	BY	DATE	REVISIONS	REMARKS

DES JA
OWN JA
CKD TAV

CIVIL

YARNELL WATER IMPROVEMENT ASSOCIATION
LATERAL REPLACEMENTS

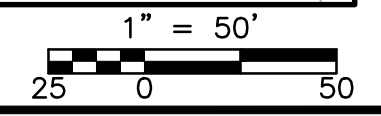
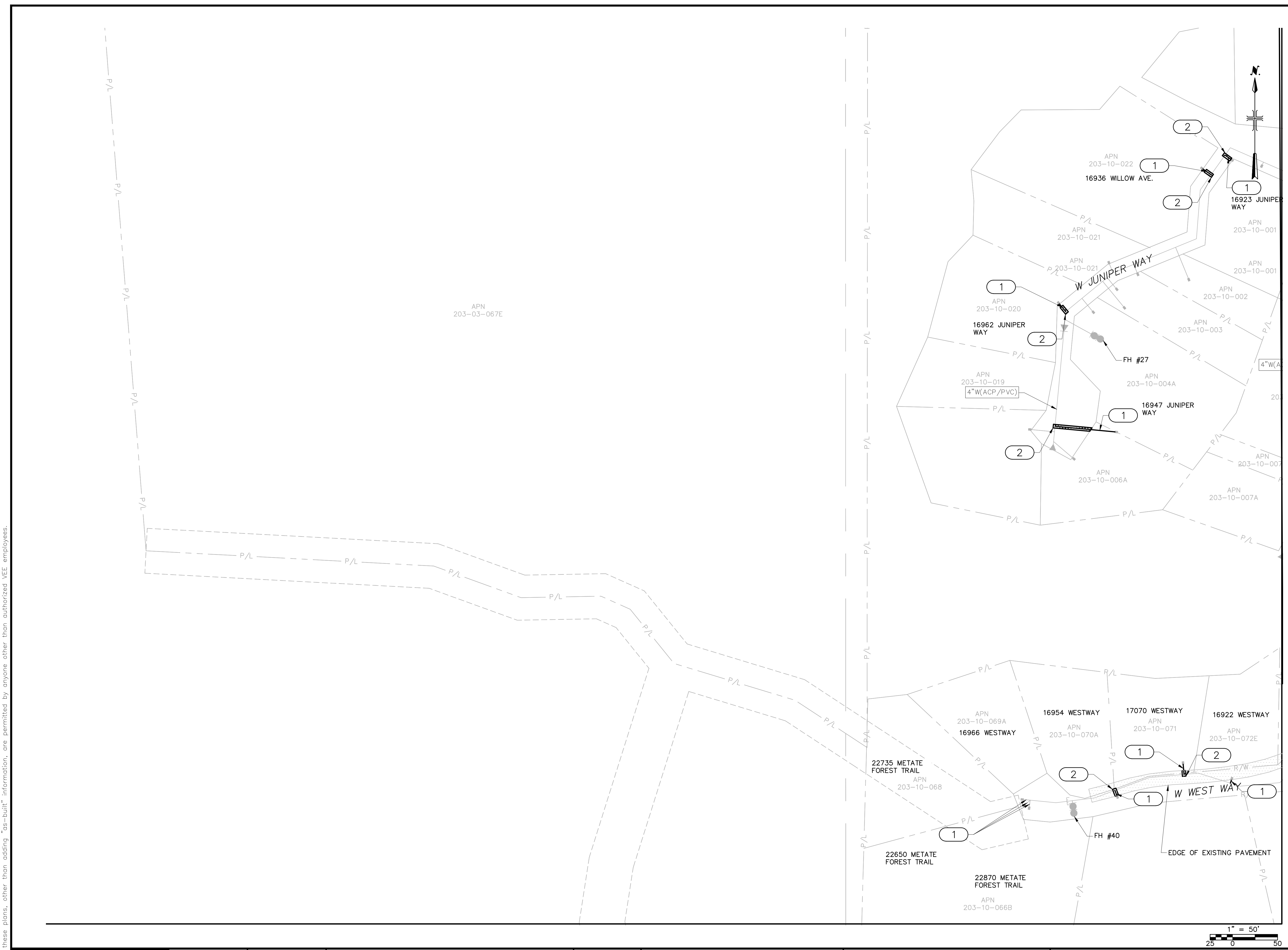
LATERAL REPLACEMENTS: PLAN VII
SCALE: 1" = 50'

COPYRIGHT © 2024
DATE: JUNE 2024
SHEET 9 OF 18
CAD FILE: C8.0.DWG

YARNELL WATER IMPROVEMENT ASSOCIATION - LATERAL REPLACEMENTS

CONSTRUCTION NOTES

- 1 DEMOLISH AND REMOVE EXISTING LATERAL. COORDINATE WITH YWA ON SHUTDOWN. PROVIDE NEW LATERAL IN ACCORDANCE WITH DETAIL 1 ON SHEET D1.0.
- 2 SAWCUT, REMOVE AND REPLACE ASPHALT IN ACCORDANCE WITH MAG STD DTL 200-1, T-TOP TRENCH REPAIR



Copyright, VALENTINE ENVIRONMENTAL ENGINEERS, LLC. 2002-24. This plan document set is the sole property of VALENTINE ENVIRONMENTAL ENGINEERS, LLC. No modifications to these plans, other than adding as-built information, are permitted by anyone other than authorized VEE employees.

VALENTINE
Environmental Engineers, LLC

15845 South 46th Street, Suite 144 Phoenix, Arizona 85048
Phone: (480) 283-8991 Fax: (480) 283-0082



REVISIONS		DES
NO.	BY	DATE

DES JA
DWN JA
CKD TAV

YARNELL WATER IMPROVEMENT ASSOCIATION
LATERAL REPLACEMENTS

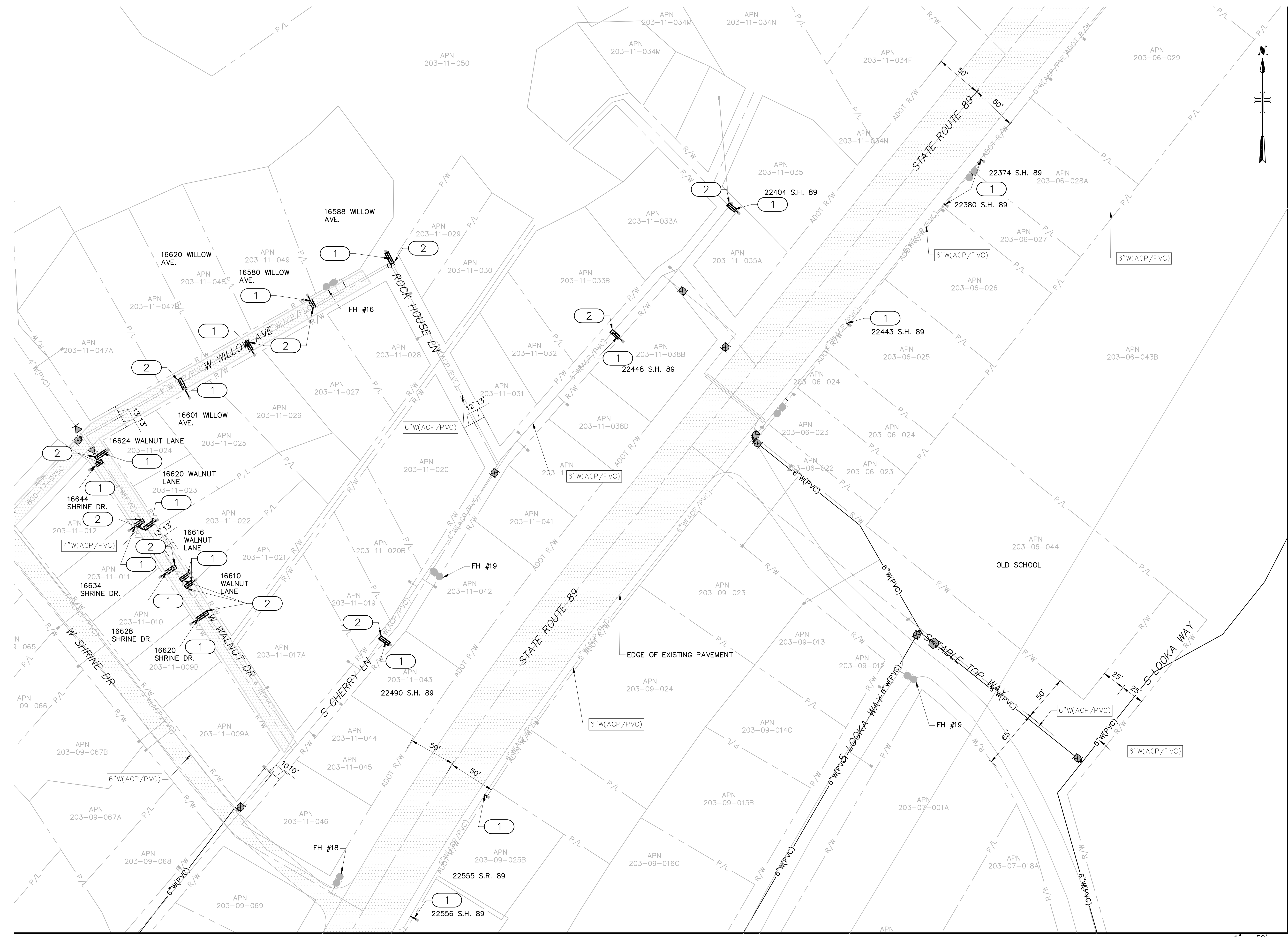
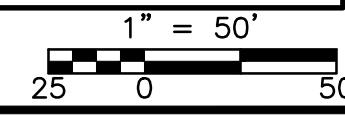
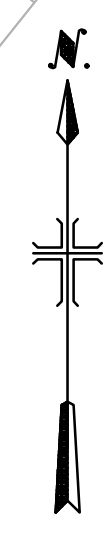
CIVIL
LATERAL REPLACEMENTS: PLAN VIII
SCALE: 1" = 50'

COPYRIGHT © 2024
DATE: JUNE 2024
SHEET 10 OF 18
CAD FILE: C9.0.DWG

YARNELL WATER IMPROVEMENT ASSOCIATION - LATERAL REPLACEMENTS

CONSTRUCTION NOTES

- 1 DEMOLISH AND REMOVE EXISTING LATERAL. COORDINATE WITH YWA ON SHUTDOWN. PROVIDE NEW LATERAL IN ACCORDANCE WITH DETAIL 1 ON SHEET D1.0.
- 2 SAWCUT, REMOVE AND REPLACE ASPHALT IN ACCORDANCE WITH MAG STD DTL 200-1, T-TOP TRENCH REPAIR



YARNELL WATER IMPROVEMENT ASSOCIATION - LATERAL REPLACEMENTS

Copyright, VALENTINE ENVIRONMENTAL ENGINEERS, LLC. 2022-24. This plan document set is the sole property of VALENTINE ENVIRONMENTAL ENGINEERS, LLC. No modifications to these plans, other than adding as-built information, are permitted by anyone other than authorized VEE employees.

VALENTINE
Environmental Engineers, LLC

15845 South 46th Street, Suite 144 Phoenix, Arizona 85048
Phone: (480) 283-8991 Fax: (480) 283-0082



REVISIONS		DES
NO.	BY	DATE

DES	JA
OWN	JA
CKD	TAV

CIVIL

YARNELL WATER IMPROVEMENT ASSOCIATION
LATERAL REPLACEMENTS

LATERAL REPLACEMENTS: PLAN V

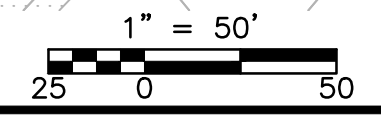
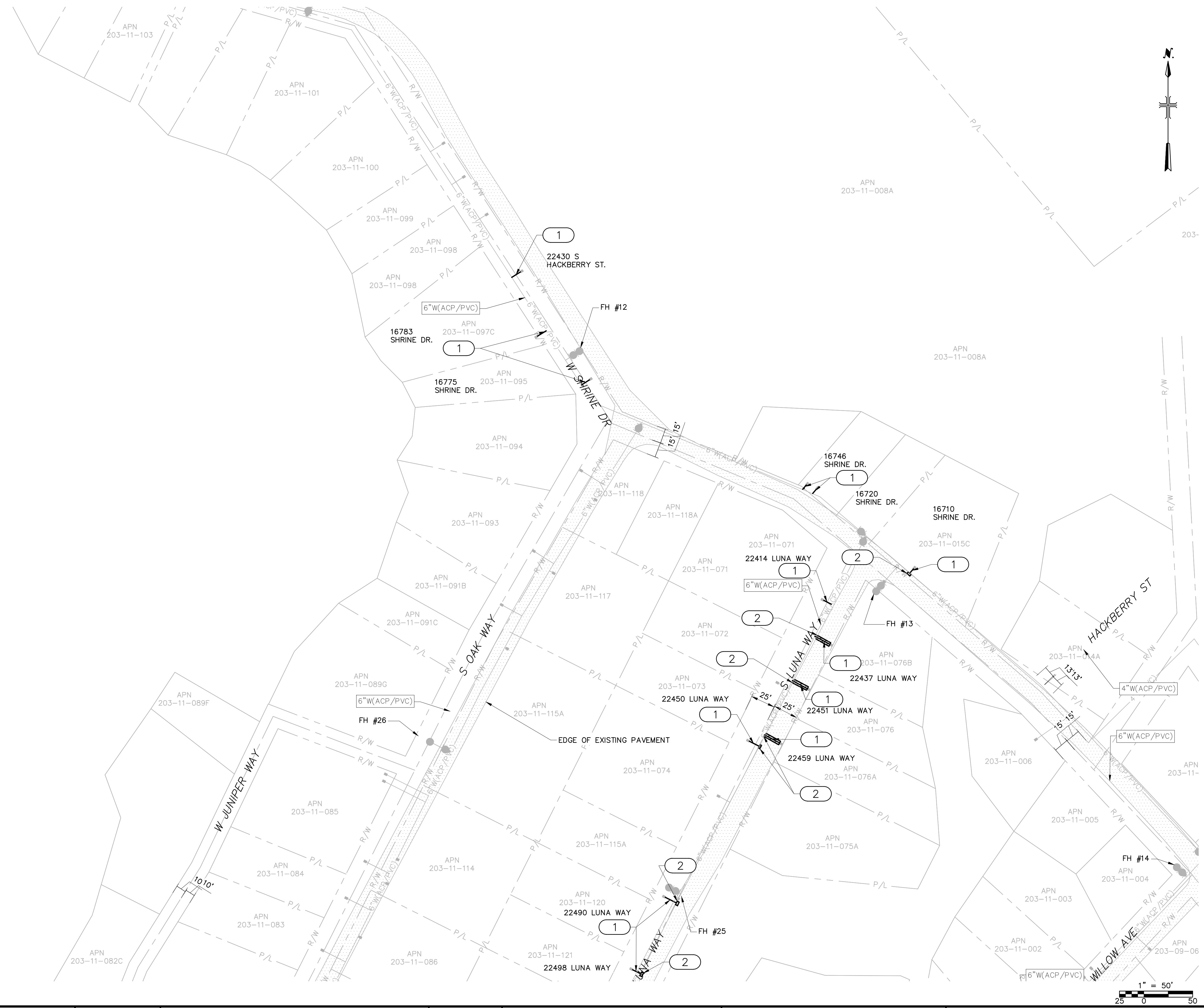
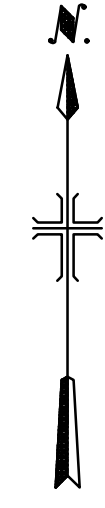
SCALE: 1" = 50'



COPYRIGHT © 2024
DATE: JUNE 2024
C11.0
SHEET 12 OF 18
CAD FILE: C11.0.DWG

CONSTRUCTION NOTES

- 1 DEMOLISH AND REMOVE EXISTING LATERAL. COORDINATE WITH YWA ON SHUTDOWN. PROVIDE NEW LATERAL IN ACCORDANCE WITH DETAIL 1 ON SHEET D1.0.
- 2 SAWCUT, REMOVE AND REPLACE ASPHALT IN ACCORDANCE WITH MAG STD DTL 200-1, T-TOP TRENCH REPAIR



Copyright, VALENTINE ENVIRONMENTAL ENGINEERS, LLC. 2002-24. This plan document set is the sole property of VALENTINE ENVIRONMENTAL ENGINEERS, LLC. No modifications to these plans, other than adding as-built information, are permitted by anyone other than authorized VEE employees.

VALENTINE
Environmental Engineers, LLC

15845 South 46th Street, Suite 144 Phoenix, Arizona 85048
Phone: (480) 283-8991 Fax: (480) 283-0082



REVISIONS		DES
NO.	BY	DATE

DES	JA
OWN	JA
CKD	TAV

YARNELL WATER IMPROVEMENT ASSOCIATION
LATERAL REPLACEMENTS

YARNELL WATER IMPROVEMENT ASSOCIATION
LATERAL REPLACEMENTS

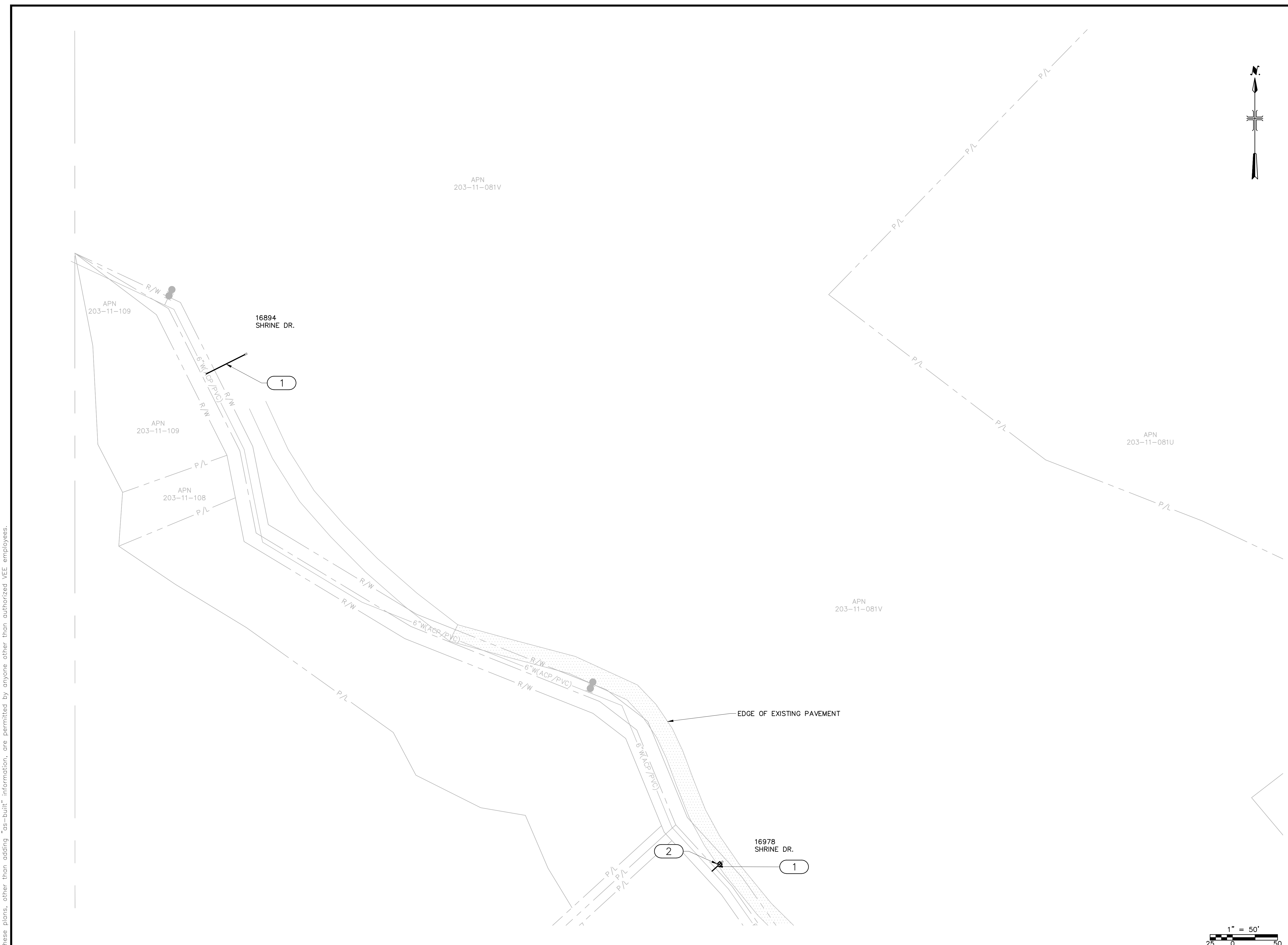
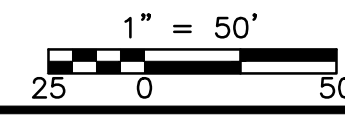
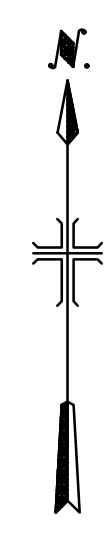
CIVIL
LATERAL REPLACEMENTS: PLAN VI
SCALE: 1" = 50'

COPYRIGHT © 2024
DATE: JUNE 2024
C12.0
SHEET 13 OF 18
CAD FILE: C12.0.DWG

YARNELL WATER IMPROVEMENT ASSOCIATION - LATERAL REPLACEMENTS

CONSTRUCTION NOTES

- 1 DEMOLISH AND REMOVE EXISTING LATERAL. COORDINATE WITH YWA ON SHUTDOWN. PROVIDE NEW LATERAL IN ACCORDANCE WITH DETAIL 1 ON SHEET D1.0.
- 2 SAWCUT, REMOVE AND REPLACE ASPHALT IN ACCORDANCE WITH MAG STD DTL 200-1, T-TOP TRENCH REPAIR



Copyright, VALENTINE ENVIRONMENTAL ENGINEERS, LLC. 2002-24. This plan document set is the sole property of VALENTINE ENVIRONMENTAL ENGINEERS, LLC. No modifications to these plans, other than adding as-built information, are permitted by anyone other than authorized VEE employees.

YARNELL WATER IMPROVEMENT ASSOCIATION - LATERAL REPLACEMENTS

VALENTINE
 Environmental Engineers, LLC

15845 South 46th Street, Suite 144 Phoenix, Arizona 85048
 Phone: (480) 283-8991 Fax: (480) 283-0082



NO.		BY	DATE	REVISIONS	REMARKS

DES	JA
DWN	JA
CKD	TAV

YARNELL WATER IMPROVEMENT ASSOCIATION
 LATERAL REPLACEMENTS

CIVIL

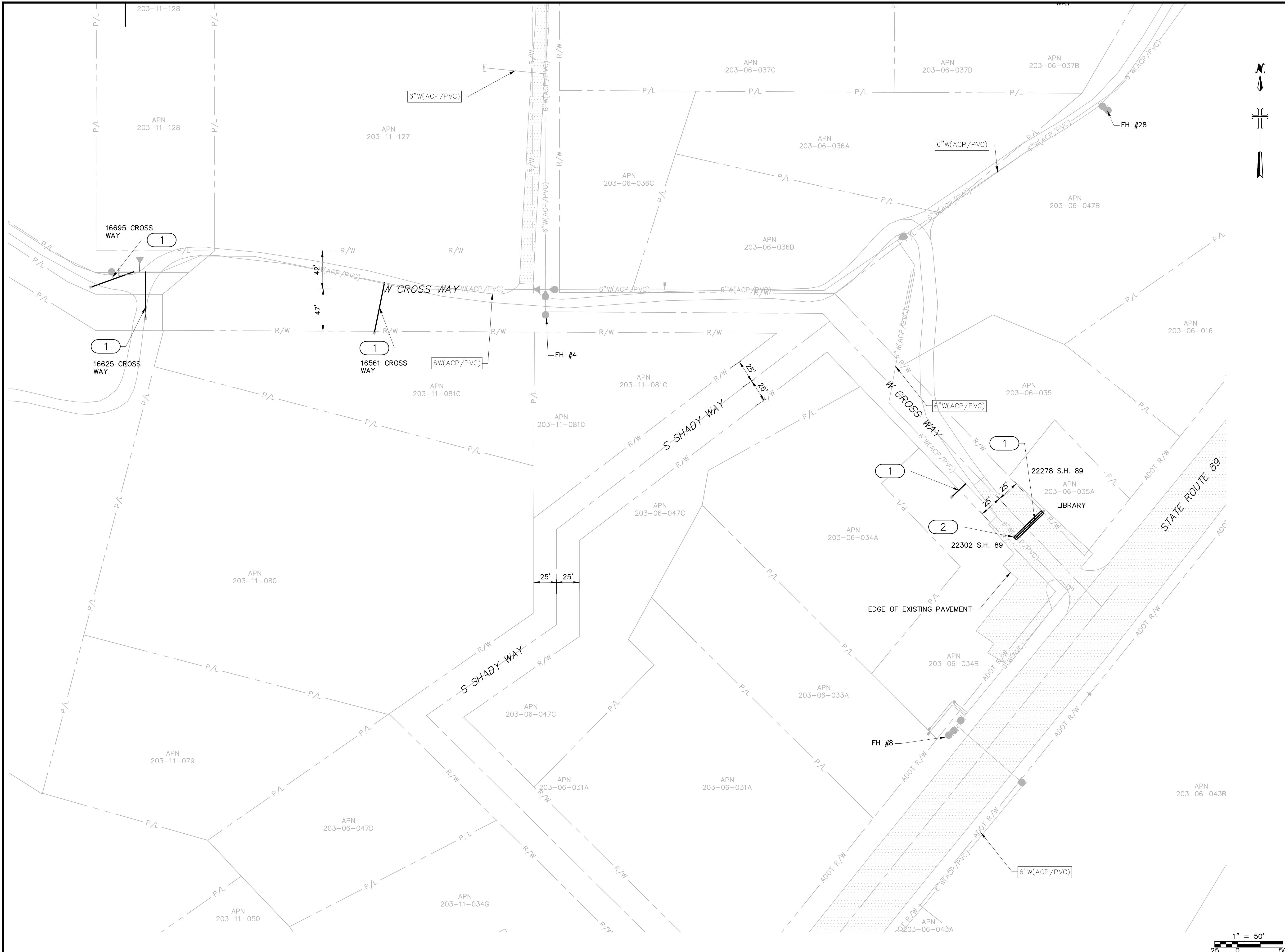
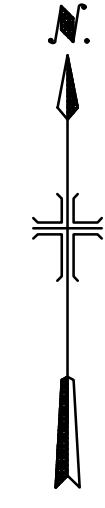
LATERAL REPLACEMENTS: PLAN XII

SCALE: 1" = 50'

COPYRIGHT © 2024
 DATE: JUNE 2024
C13.0
 SHEET 14 OF 18
 CAD FILE: C13.0.DWG

CONSTRUCTION NOTES

- 1 DEMOLISH AND REMOVE EXISTING LATERAL. COORDINATE WITH YWA ON SHUTDOWN. PROVIDE NEW LATERAL IN ACCORDANCE WITH DETAIL 1 ON SHEET D1.0.
- 2 SAWCUT, REMOVE AND REPLACE ASPHALT IN ACCORDANCE WITH MAG STD DTL 200-1, T-TOP TRENCH REPAIR



Copyright, VALENTINE ENVIRONMENTAL ENGINEERS, LLC. 2002-24. This plan document set is the sole property of VALENTINE ENVIRONMENTAL ENGINEERS, LLC. No modifications to these plans, other than adding as-built information, are permitted by anyone other than authorized VEE employees.

YARNELL WATER IMPROVEMENT ASSOCIATION - LATERAL REPLACEMENTS



VALENTINE
Environmental Engineers, LLC

15845 South 46th Street, Suite 144 Phoenix, Arizona 85048
Phone: (480) 283-8991 Fax: (480) 283-0082



NO.		BY	DATE	REVISIONS	REMARKS

DES JA
OWN JA
CKD TAV

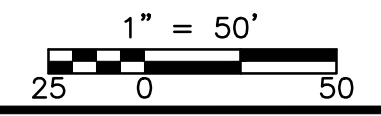
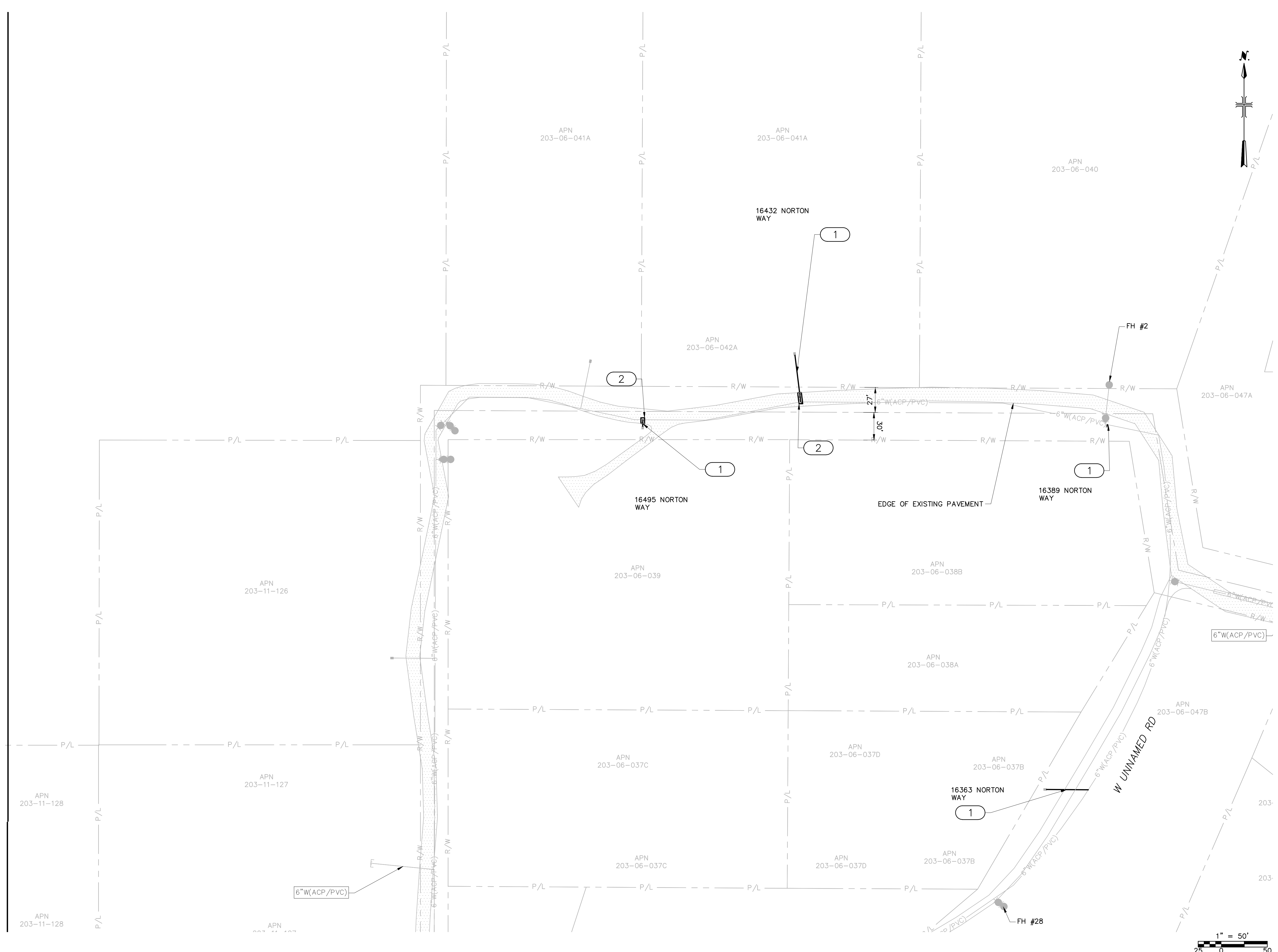
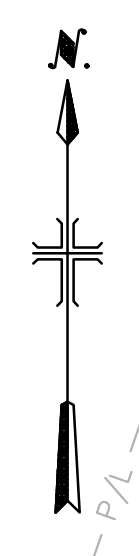
YARNELL WATER IMPROVEMENT ASSOCIATION
LATERAL REPLACEMENTS

CIVIL
LATERAL REPLACEMENTS: PLAN XIII
SCALE: 1" = 50'

COPYRIGHT © 2024
DATE: JUNE 2024
C14.0
SHEET 15 OF 18
CAD FILE: C14.0.DWG

CONSTRUCTION NOTES

- 1 DEMOLISH AND REMOVE EXISTING LATERAL. COORDINATE WITH YWA ON SHUTDOWN. PROVIDE NEW LATERAL IN ACCORDANCE WITH DETAIL 1 ON SHEET D1.0.
- 2 SAWCUT, REMOVE AND REPLACE ASPHALT IN ACCORDANCE WITH MAG STD DTL 200-1, T-TOP TRENCH REPAIR



Copyright, VALENTINE ENVIRONMENTAL ENGINEERS, LLC. 2002-24. This plan document set is the sole property of VALENTINE ENVIRONMENTAL ENGINEERS, LLC. No modifications to these plans, other than adding as-built information, are permitted by anyone other than authorized VEE employees.

VALENTINE
Environmental Engineers, LLC

15845 South 46th Street, Suite 144 Phoenix, Arizona 85048
Phone: (480) 283-8991 Fax: (480) 283-0082



NO.		BY	DATE	REVISIONS	REMARKS

DES JA
DWN JA
CKD TAV

YARNELL WATER IMPROVEMENT ASSOCIATION
LATERAL REPLACEMENTS

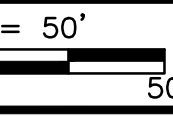
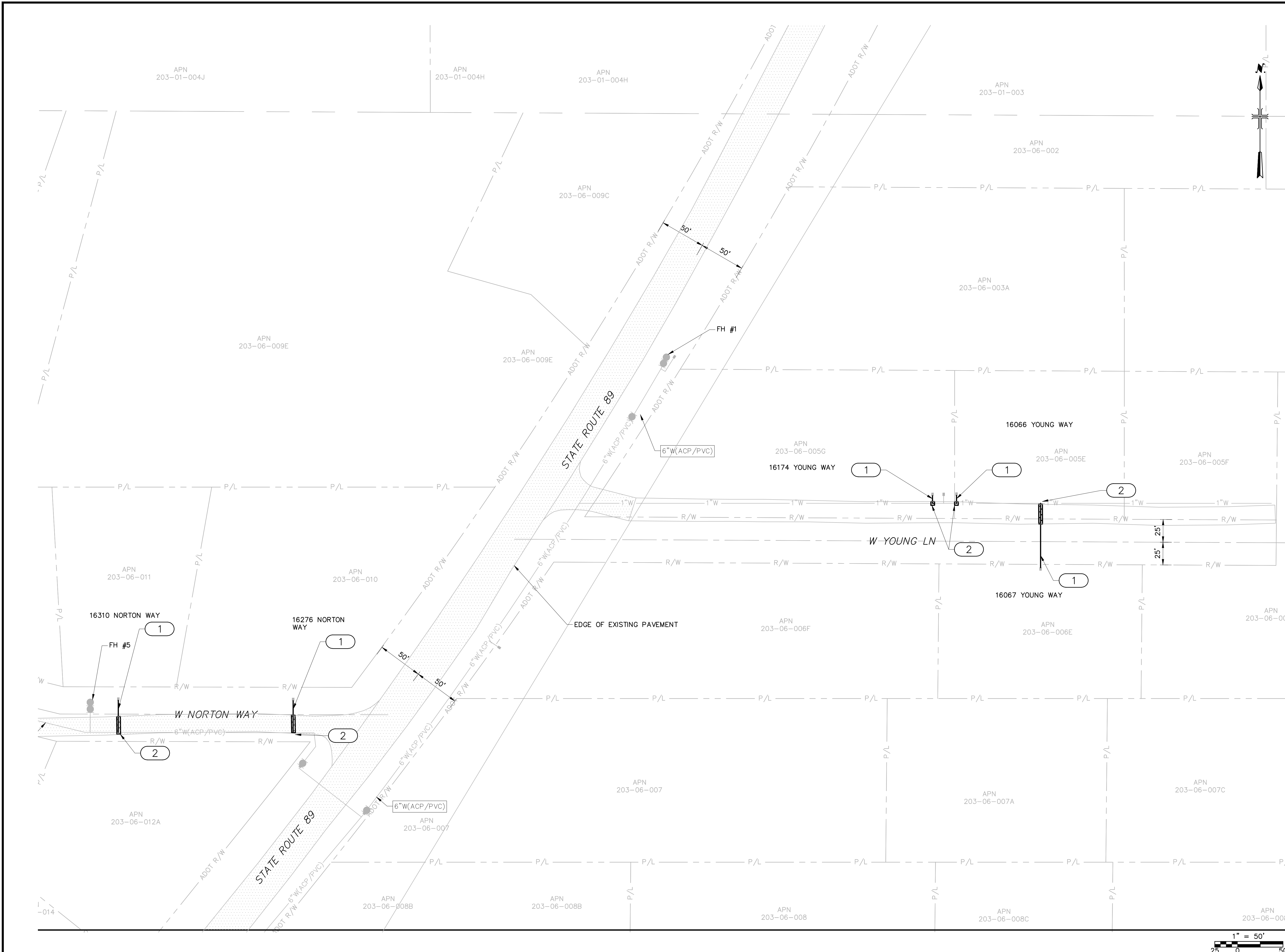
CIVIL
LATERAL REPLACEMENTS: PLAN XIV
SCALE: 1" = 50'

COPYRIGHT © 2024
DATE: JUNE 2024
C15.0
SHEET 16 OF 18
CAD FILE: C15.0.DWG

YARNELL WATER IMPROVEMENT ASSOCIATION - LATERAL REPLACEMENTS

CONSTRUCTION NOTES

- 1 DEMOLISH AND REMOVE EXISTING LATERAL. COORDINATE WITH YWA ON SHUTDOWN. PROVIDE NEW LATERAL IN ACCORDANCE WITH DETAIL 1 ON SHEET D1.0.
- 2 SAWCUT, REMOVE AND REPLACE ASPHALT IN ACCORDANCE WITH MAG STD DTL 200-1, T-TOP TRENCH REPAIR



Copyright, VALENTINE ENVIRONMENTAL ENGINEERS, LLC. 2002-24. This plan document set is the sole property of VALENTINE ENVIRONMENTAL ENGINEERS, LLC. No modifications to these plans, other than adding as-built information, are permitted by anyone other than authorized VEE employees.

VALENTINE
Environmental Engineers, LLC

15845 South 46th Street, Suite 144 Phoenix, Arizona 85048
Phone: (480) 283-8991 Fax: (480) 283-0082



NO.	BY	DATE	REVISIONS	REMARKS

DES JA
DWN JA
CKD TAV

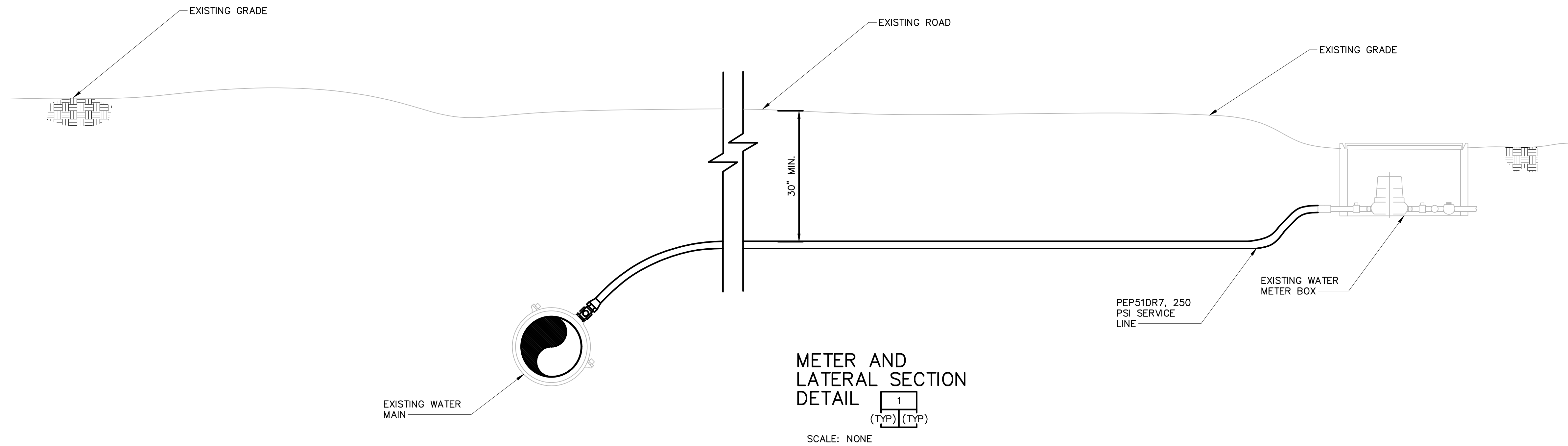
YARNELL WATER IMPROVEMENT ASSOCIATION
LATERAL REPLACEMENTS

CIVIL
LATERAL REPLACEMENTS: PLAN XV
SCALE: 1" = 50'

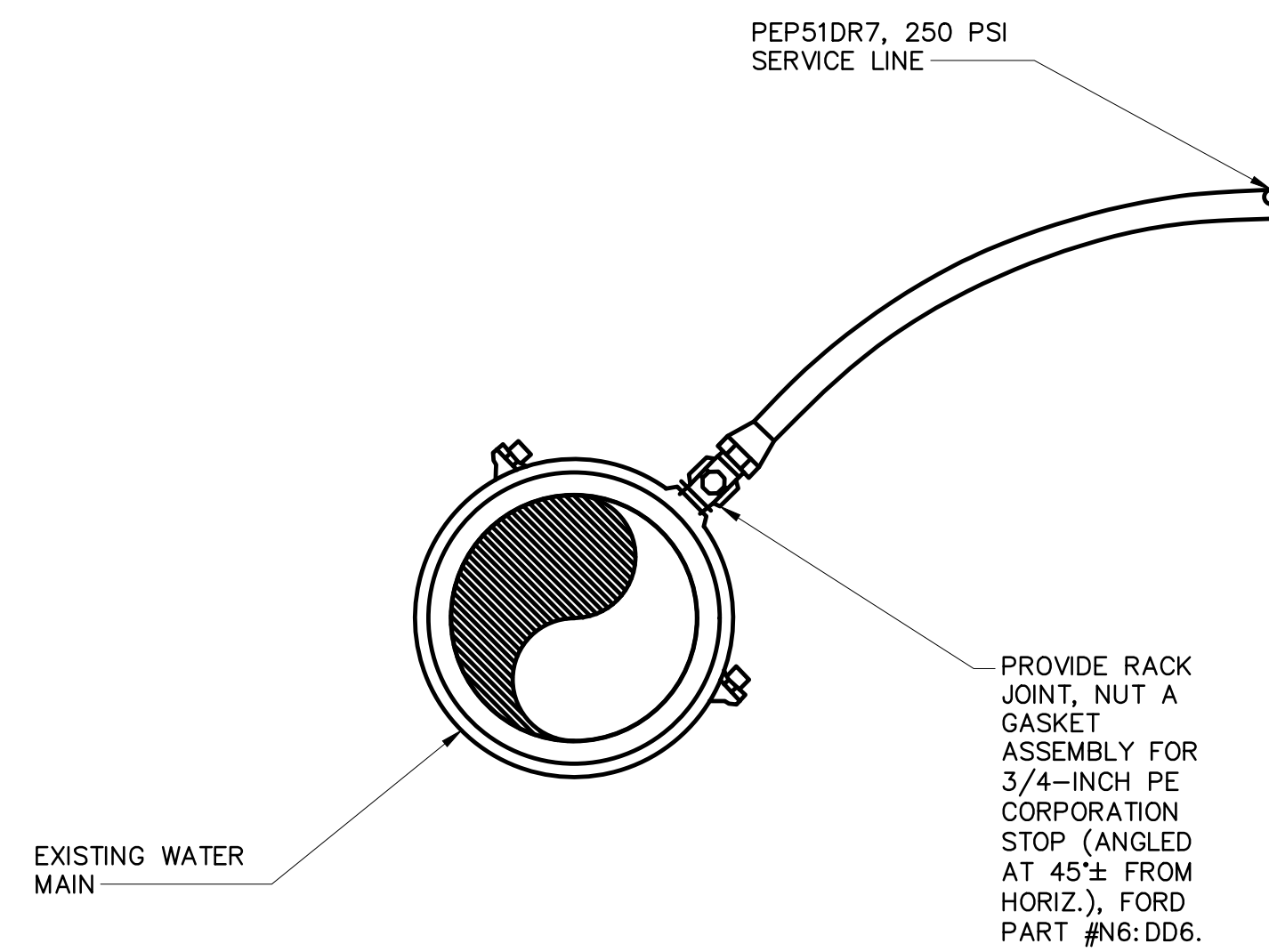
COPYRIGHT © 2024
DATE: JUNE 2024
C16.0
SHEET 17 OF 18
CAD FILE: C16.0.DWG

YARNELL WATER IMPROVEMENT ASSOCIATION - LATERAL REPLACEMENTS

© Copyright, VALENTINE ENVIRONMENTAL ENGINEERS, LLC. 2002-24. This plan document set is the sole property of VALENTINE ENVIRONMENTAL ENGINEERS, LLC. No modifications to these plans, other than adding as-built information, are permitted by anyone other than authorized VEE employees.



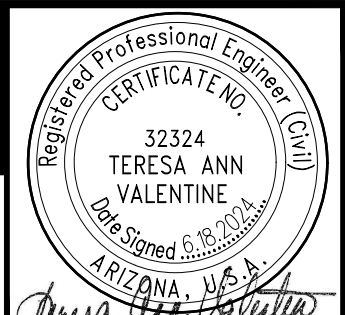
METER AND LATERAL SECTION DETAIL 1 (TYP) (TYP)
SCALE: NONE



LATERAL TO MAIN CONNECTION DETAIL 1B (TYP) (TYP)
SCALE: NONE



VALENTINE
Environmental Engineers, LLC



15845 South 46th Street, Suite 144 Phoenix, Arizona 85048
Phone: (480) 283-8991 Fax: (480) 283-0082

NO.		BY	DATE	REVISIONS	REMARKS

DES	JA
DWN	JA
CKD	TAV

YARNELL WATER IMPROVEMENT ASSOCIATION
LATERAL REPLACEMENTS

CIVIL
LATERAL REPLACEMENTS
DETAIL 1
SCALE: NTS

COPYRIGHT © 2024
DATE: JUNE 2024
D1.0
SHEET 18 OF 18
CAD FILE: D1.0.DWG