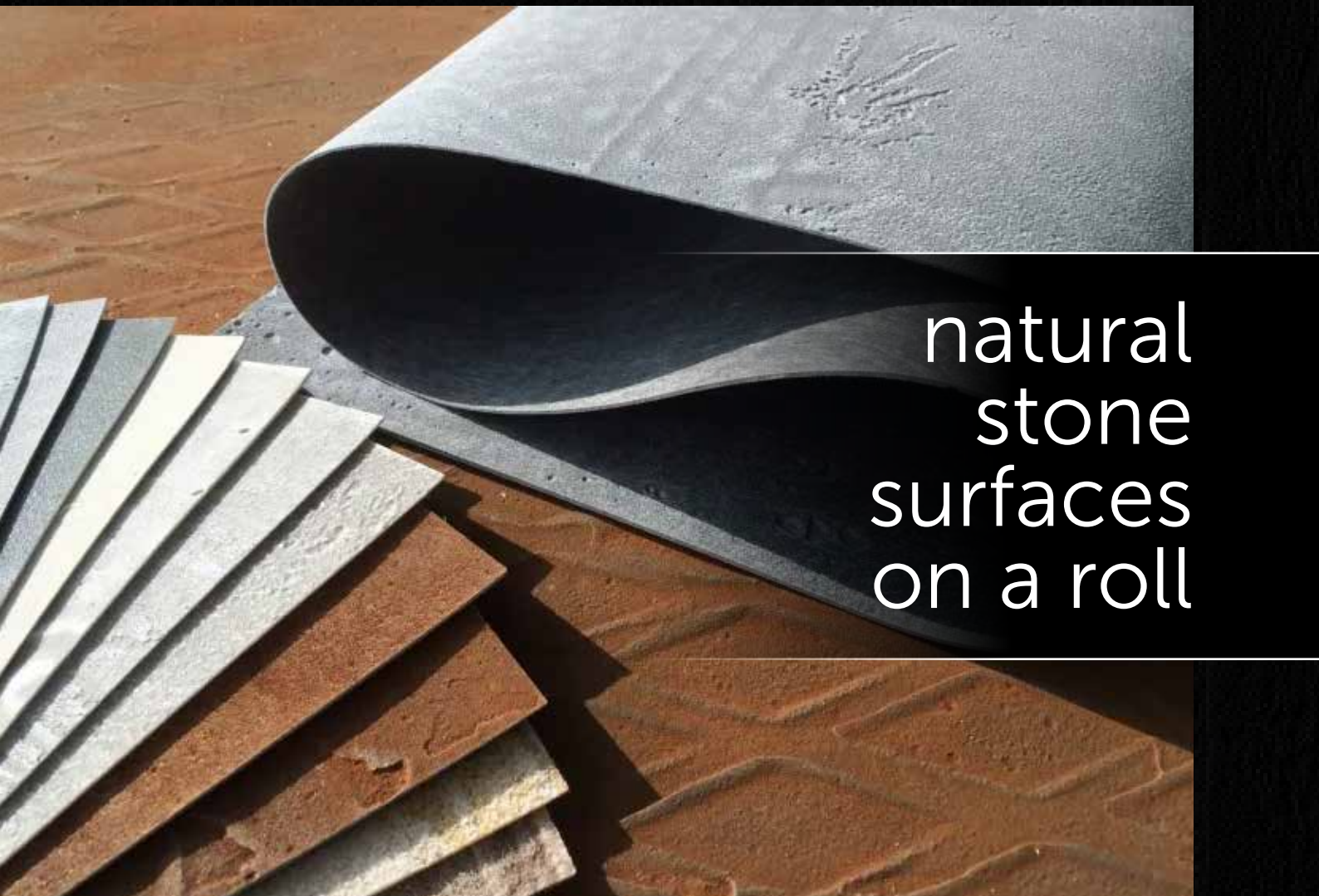


X²STONE[®]

S U R F A C E S



natural
stone
surfaces
on a roll

www.xstonesurfaces.co.uk

「be inspired」

XSTONE®

Unlock the full potential of your design vision with XSTONE. Our innovative range of eco-friendly natural stone and metal surfaces offer easy-to-install finishes without the constraints of traditional methods.



XSTONE is crafted from a flexible fibreglass base, which can be rolled making it easy to transport and install.

With 60 natural textured finishes to choose from, including concrete, rust, copper, wood and stone, the possibilities are endless. Each piece is hand-made, ensuring a truly authentic and unique finish. XSTONE materials can also be applied as a paste, which widens its range of applications to surfaces such as flooring and exterior facades.

Take your designs to new heights with our coloured dyes and specialist production techniques. And with our prototype

sampling service, you can rest assured that your vision will be brought to life with precision and accuracy.

Since 2007, we've been pushing the boundaries of surface finishes from our headquarters in Germany, supplying our partners and clients around the world with our versatile and easy-to-install product. Whether it's on floors, walls, facades or furniture we are here to help you bring your vision to reality. Embrace the beauty of natural stone in your designs with XSTONE.

「authentic finishes」

- Made in Germany (stocked in the UK)
- 60 finishes to choose from
- Custom design service
- Lightweight and flexible
- Infinite applications
- Durable and hard wearing
- Impact resistant
- Waterproof once sealed
- Easy installation
- Internal / External use



Loft Green 1008

100 x 300 cm
2 - 3 mm thick
3 m²





Flat Rust 1012

100 x 300 cm
2 - 3 mm thick
3 m²





Waffle Rust 1011

100 x 300 cm
2 - 3 mm thick
3 m²





Concrete 1010

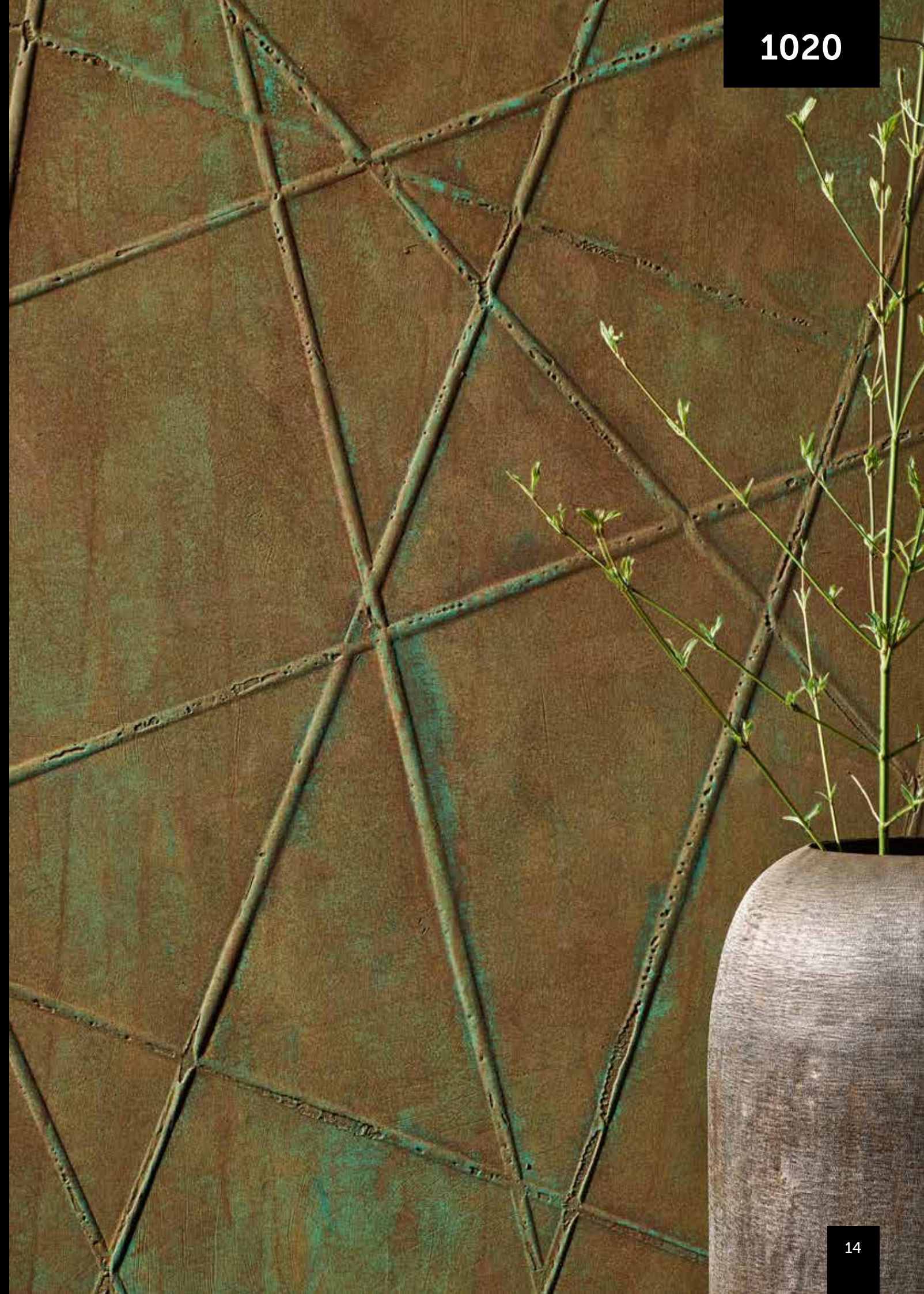
100 x 300 cm
2 - 3 mm thick
3 m²

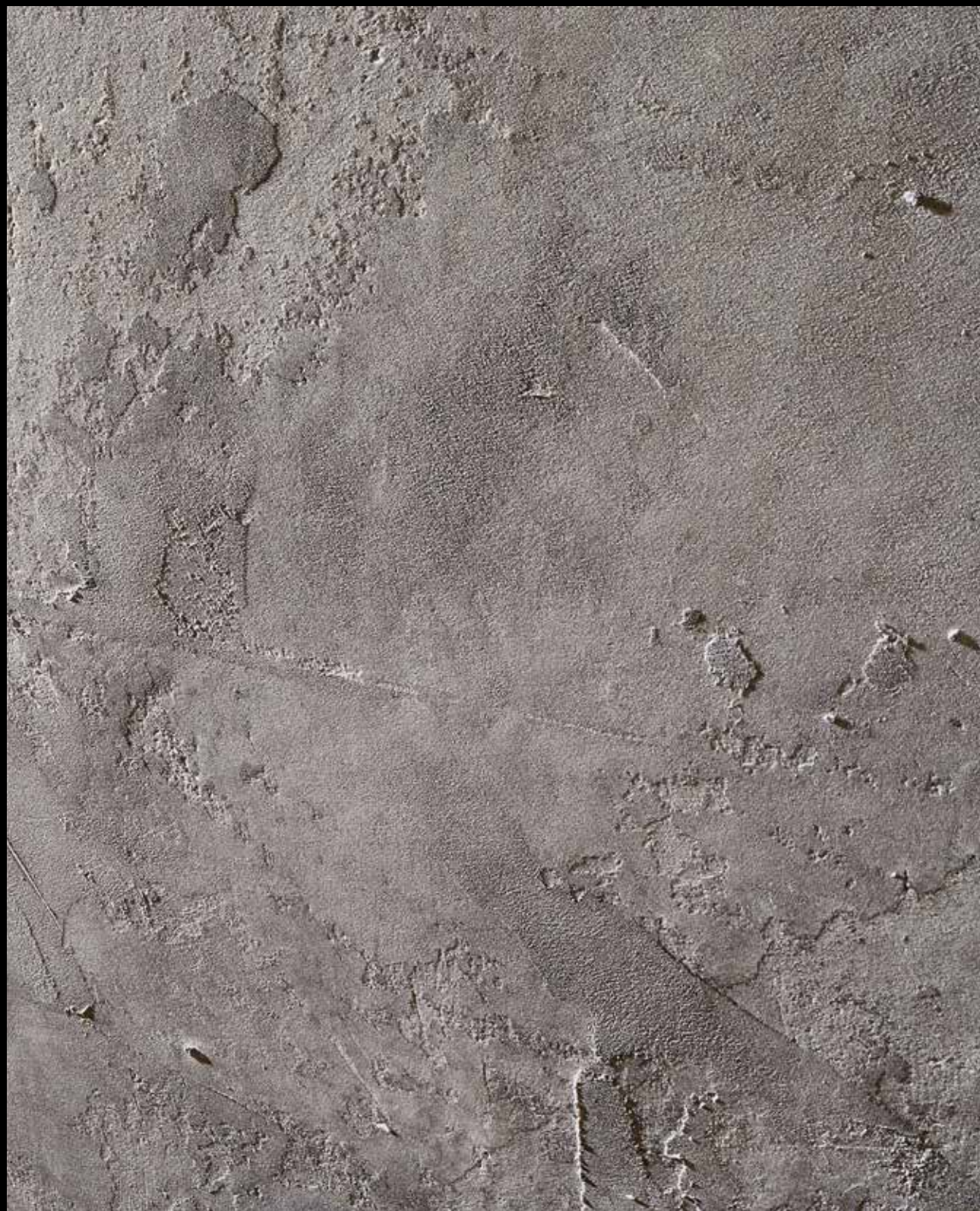




Spider Copper 1020

100 x 300 cm
2 - 3 mm thick
3 m²





Concrete Trash - Dark **1023**

100 x 300 cm
2 - 3 mm thick
3 m²





Wood Optic 1007

100 x 300 cm
2 - 3 mm thick
3 m²

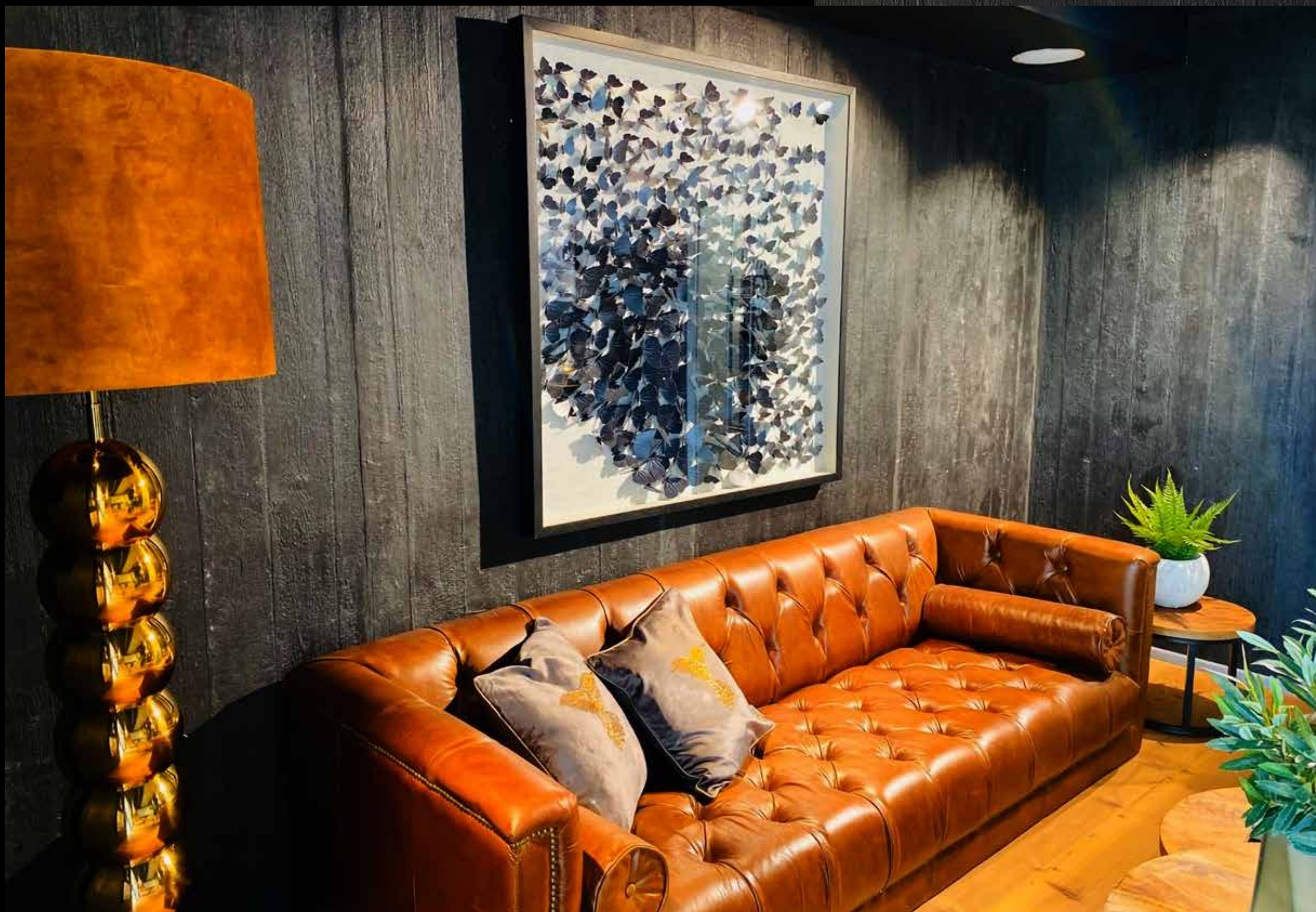




Highrise Copper 1024

100 x 300 cm
2 - 3 mm thick
3 m²





Fireplank Mokutan 1017

100 x 300 cm
2 - 3 mm thick
3 m²

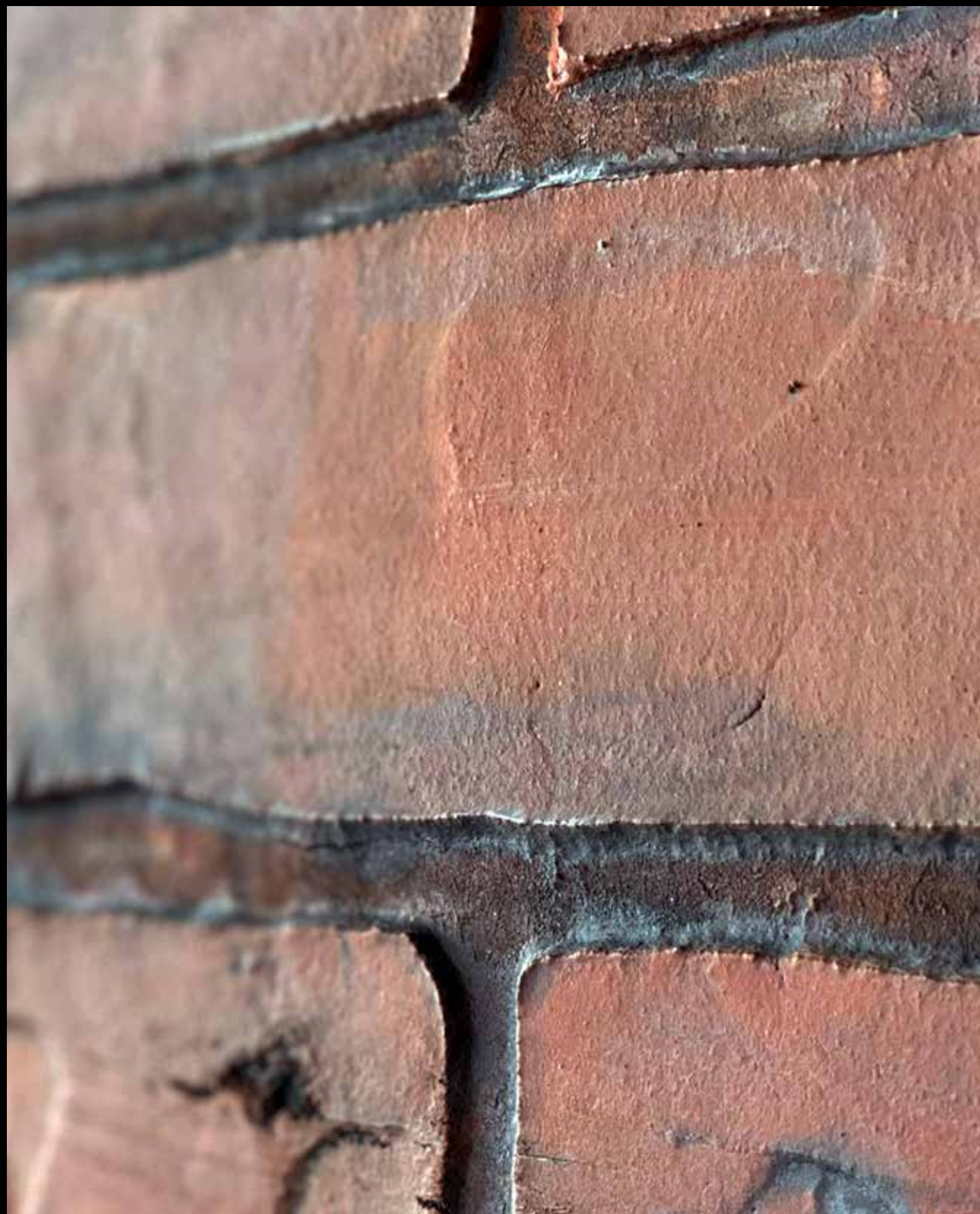




Square Copper 1021

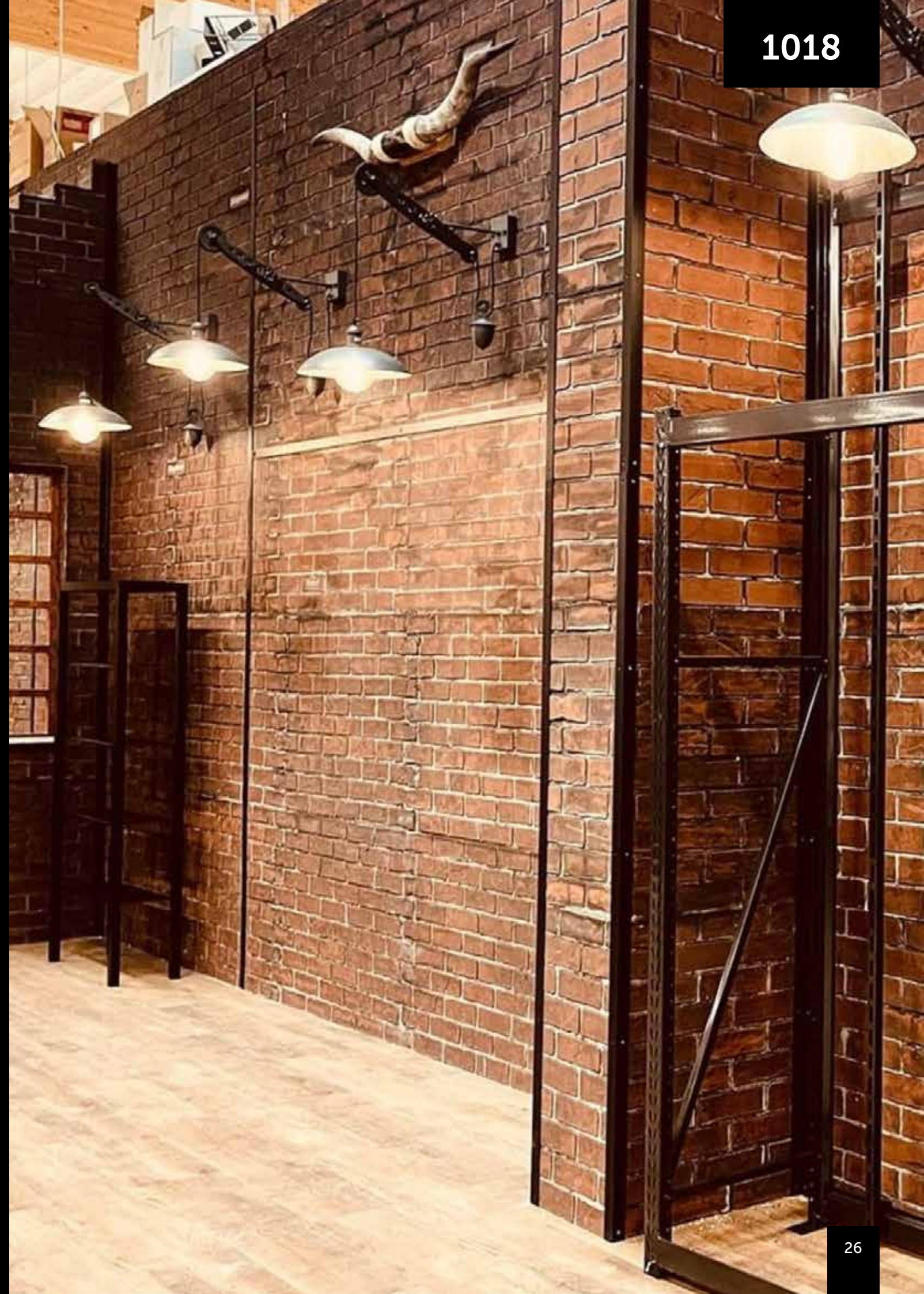
100 x 300 cm
2 - 3 mm thick
3 m²





Bricks 8R Red **1018**

100 x 300 cm
2 - 3 mm thick
3 m²



applications



Flooring



Furniture



Exterior Facades



POS Displays



Walls / Ceilings

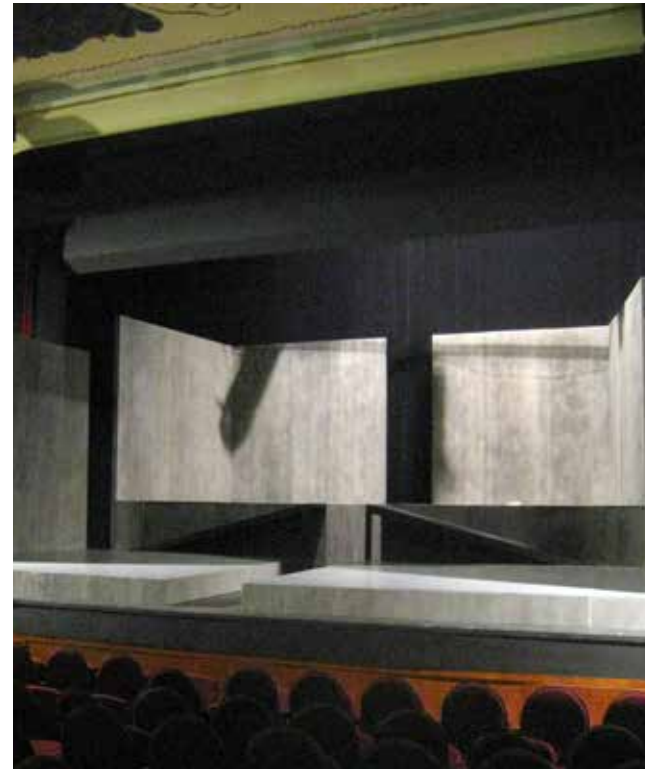


Signage

primary market sectors



Commercial fit-out



Film & TV



Signs & Display



Heritage / Museums



Hospitality



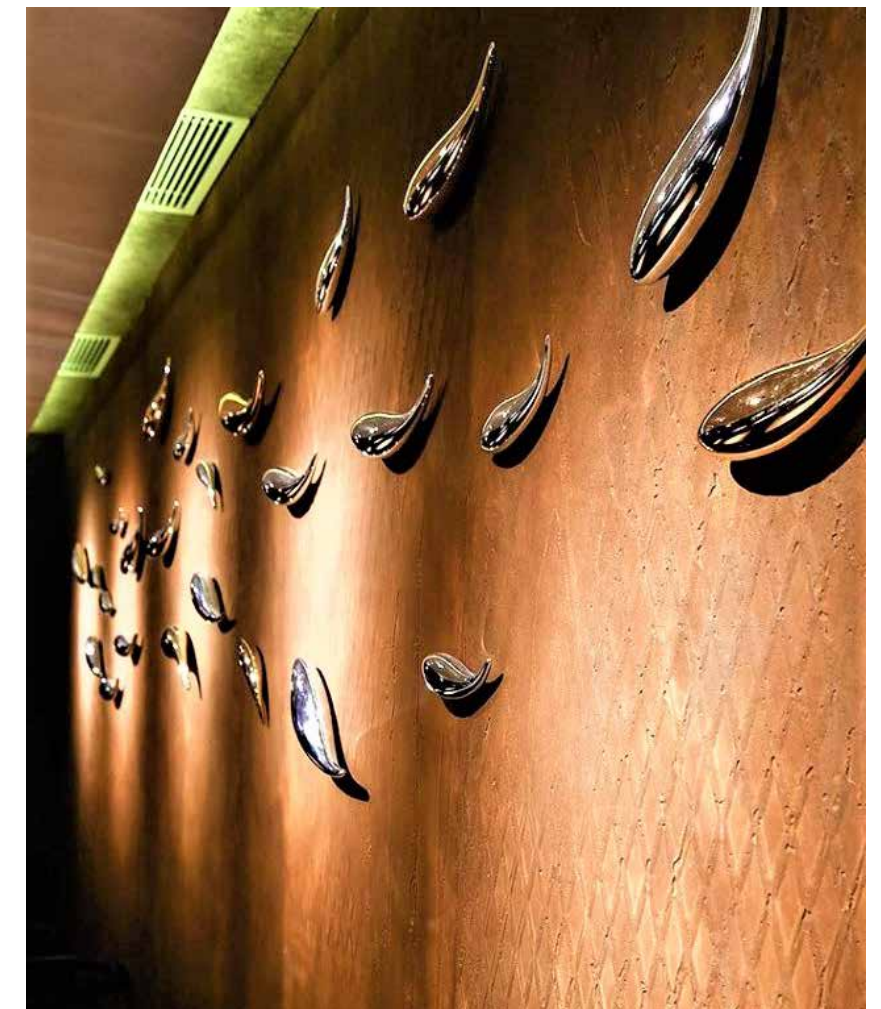
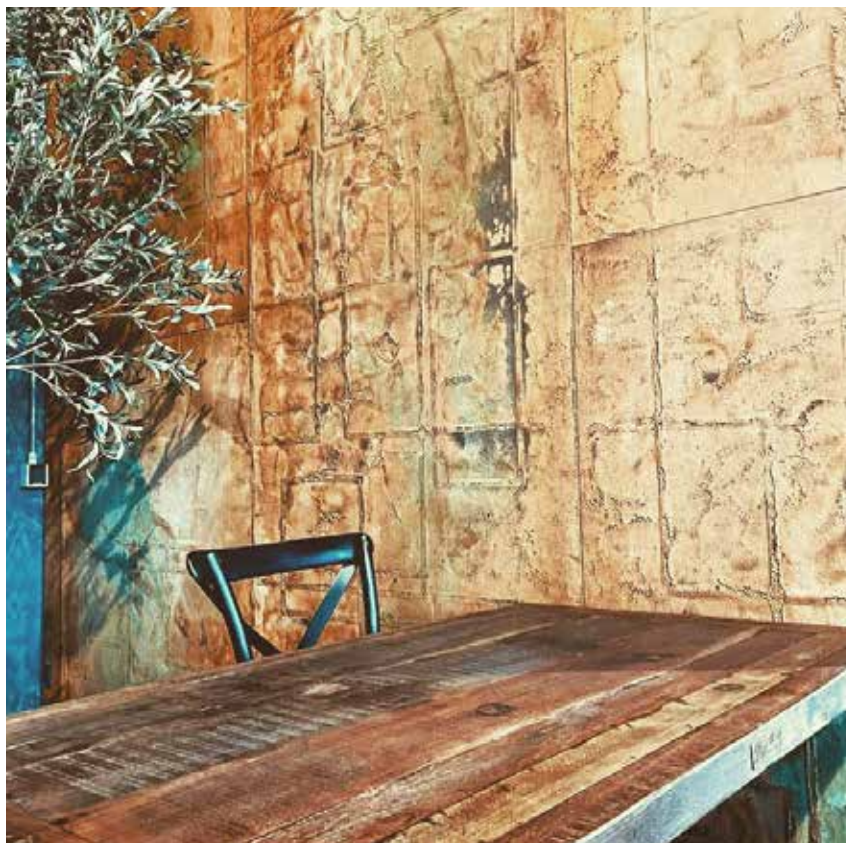
Exhibition / Events



Retail

project portfolio







Splash protection

Splash protection following treatment with sealant

Factory Acrylat sealing

Acrylate sealant applied in the factory

Decorative layer

Polymer-mineral decorative layer

Backing - woven fabric

Support: Fleece

Specifications

Width:	1000mm
Length:	3000mm
Typical thickness:	2mm
Base material:	Fibreglass textile
Flammability:	A2 EN13501-1
Haptics:	Roughness similar to concrete
Smoke Emission:	s1
Load capacity:	Similar to concrete
Permeable:	Yes
Bleaching Response:	Unknown N/A
Flaming Droplets:	d0
Solvents:	None
Quality of the substrate:	Q4 European standard

Characteristics



Abrasion-resistant



Excellent light resistance



Remove wet



Without join and repeat



Flame-retardant



Paste wall



Full surface bonding



Fire behaviour



Splash protection possible

sample selection

Visit www.xstonesurfaces.co.uk
for more information



Loft Green **1008**



Concrete **1010**



Spider Copper **1020**



Concrete Trash - Light **1015**



Flat Rust **1012**



Travertine Black **1085**



Square Copper **1021**



Concrete Trash - Dark **1023**



Waffle Rust **1011**



Concrete **1006**



Fireplank Mokutan **1017**



Travertine **1084**



Highrise Copper **1024**



Wood Optic **1007**



Travertine Beige **1089**



Mandala **1025**



「be unique」

XSTONE[®]
S U R F A C E S

www.xstonesurfaces.co.uk