

# Digital Printed Cans Art File Guide



Please share this document with your graphic designer to understand the specific requirements from our digital printing partner, Aluminare. Success depends on having the best possible art files, so review the requirements carefully with your team. Note that all artwork must be formatted using the templates provided at the end of this document.

**Artwork Submission:** Please submit your artwork files in high-resolution formats to ensure clarity and precision. Note that we only accept .pdf or .ai formats. Our #1 preference is a High Quality Print PDF (default preset).

## Creating Graphics:

- CMYK color mode only, not RGB
- Outline all fonts
- Embed all images
- Ensure everything is vector based
- Image resolution 300 to 800 DPI

## Adding Finishes:

- 1.) Create a separate layer for each, naming the layers for what is going to be done in that layer.
  - Ex: Selective Matte "Matte", Tactile Embellishments "Tactile"
- 2.) Give each layer its own color Ex: Matte - Blue, Tactile - Pink
- 3.) Breakdown what will be Matte or Tactile - these areas will have no color.
  - Ex: Matte - everything in this layer would be blue except for the area that will be matte (no color).
  - Tactile - everything in this layer would be pink except for the area that will have tactile embellishments (no color).

## Finish Options:

- Full Gloss: no action required
  - Selective Gloss: Build on a separate layer. Use the REF swatch on gloss elements
- Full Matte: no action required
  - Selective Matte: Build on a separate layer.
- Metallics: Build on a separate layer. Use the METAL swatch on metallic elements

## Saving as a PDF:

- Save as a High Quality Print PDF (default preset)
- One SKU per PDF submission / One design per PDF
- No cropmarks. No bleed. This is not a label.

## Questions?

Give our sales team a shout at:  
sales@taphopper.com or 336-850-1477

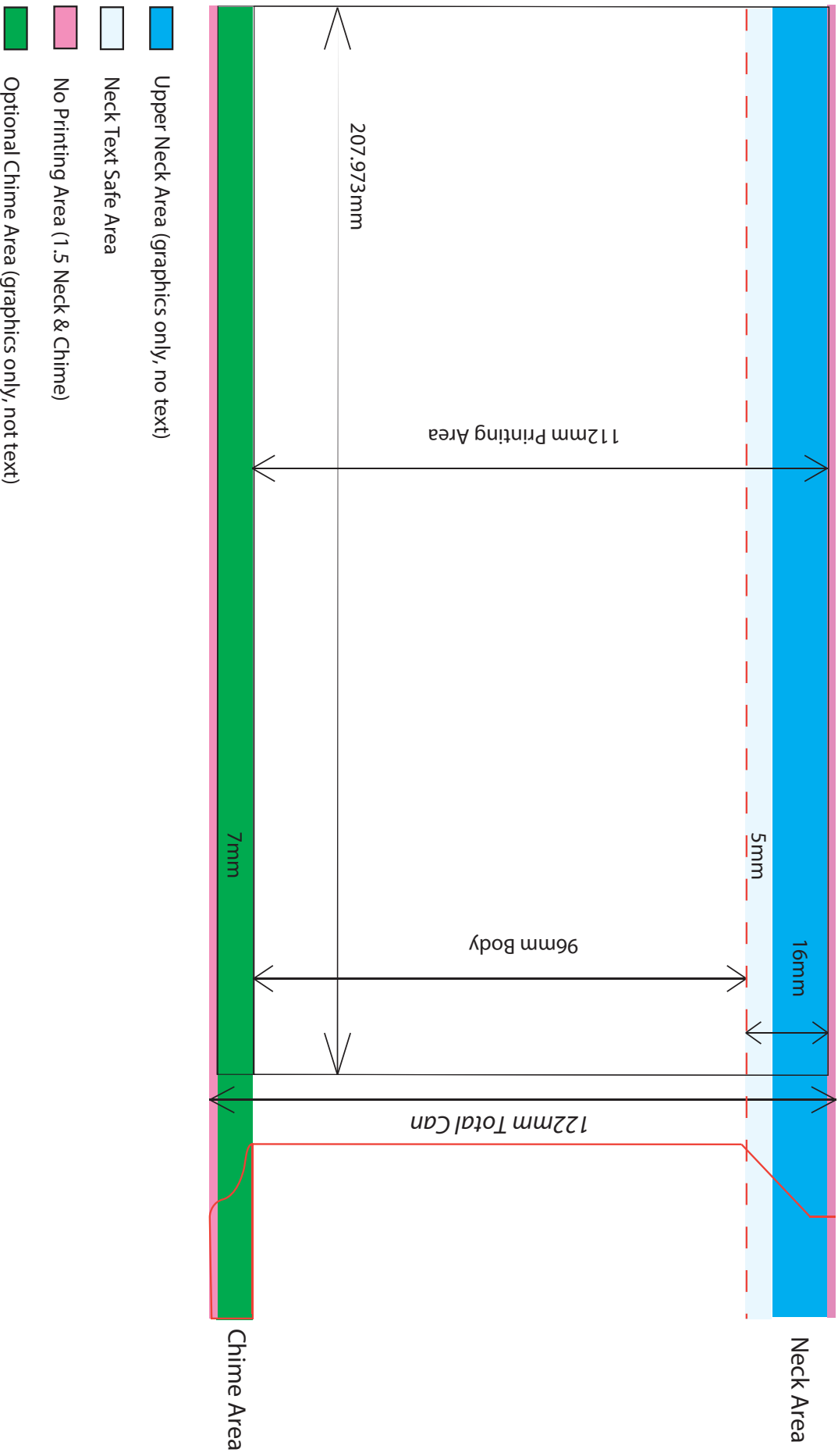


# ALUMINATE

## 12oz Standard Can

### Printing File Size 207.973mm X 119mm

### 12OZ STANDARD TEMPLATE

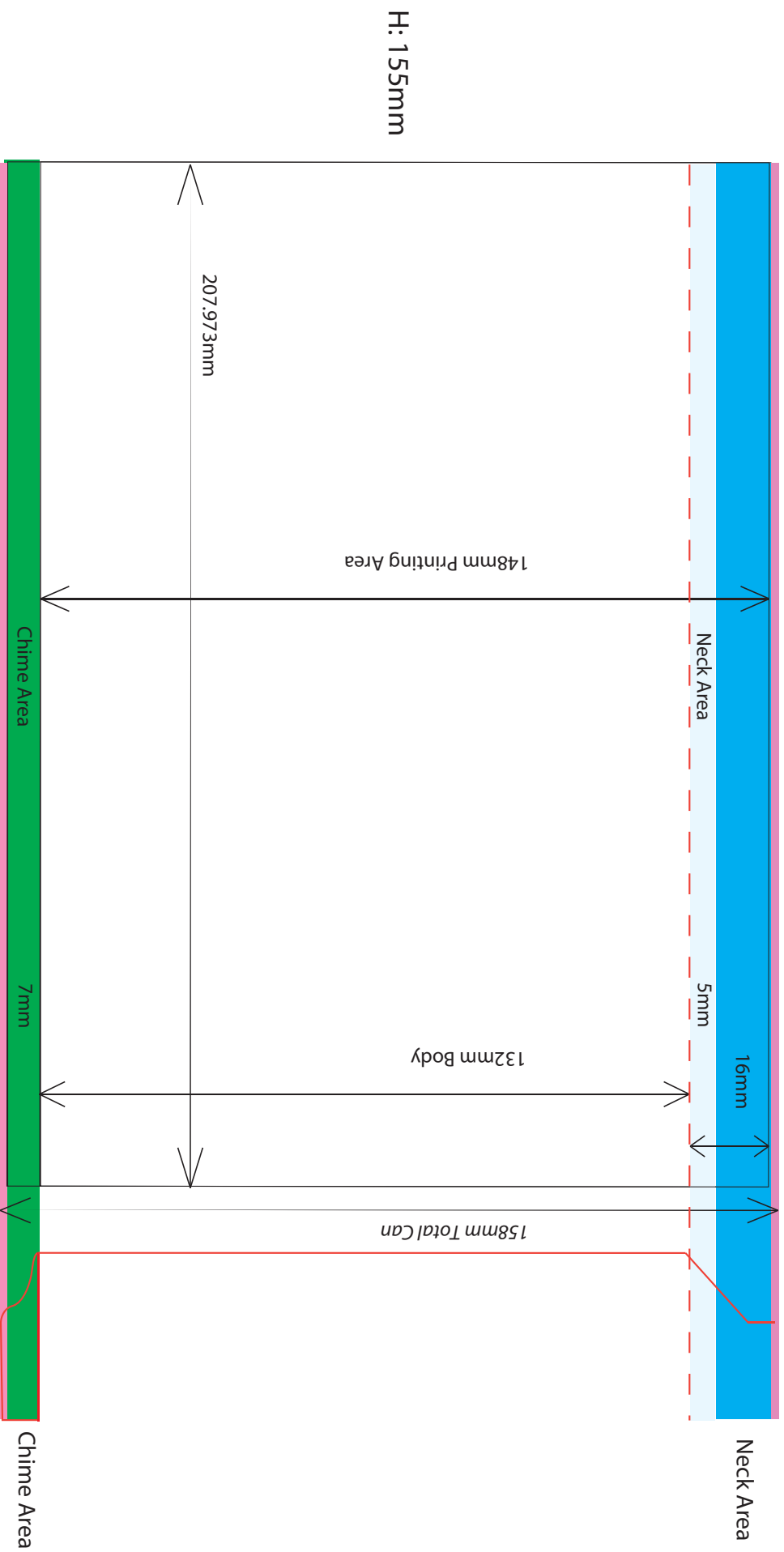




# ALUMINATE

## 16oz Can

Printing File Size 207.973mm X 155mm  
16oz Can



 Upper Neck Area (graphics only, no text) W: 207.973mm

 Neck Text Safe Area

 No Printing Area (1.5 Neck & Chime)

 Optional Chime Area (graphics only, not text)



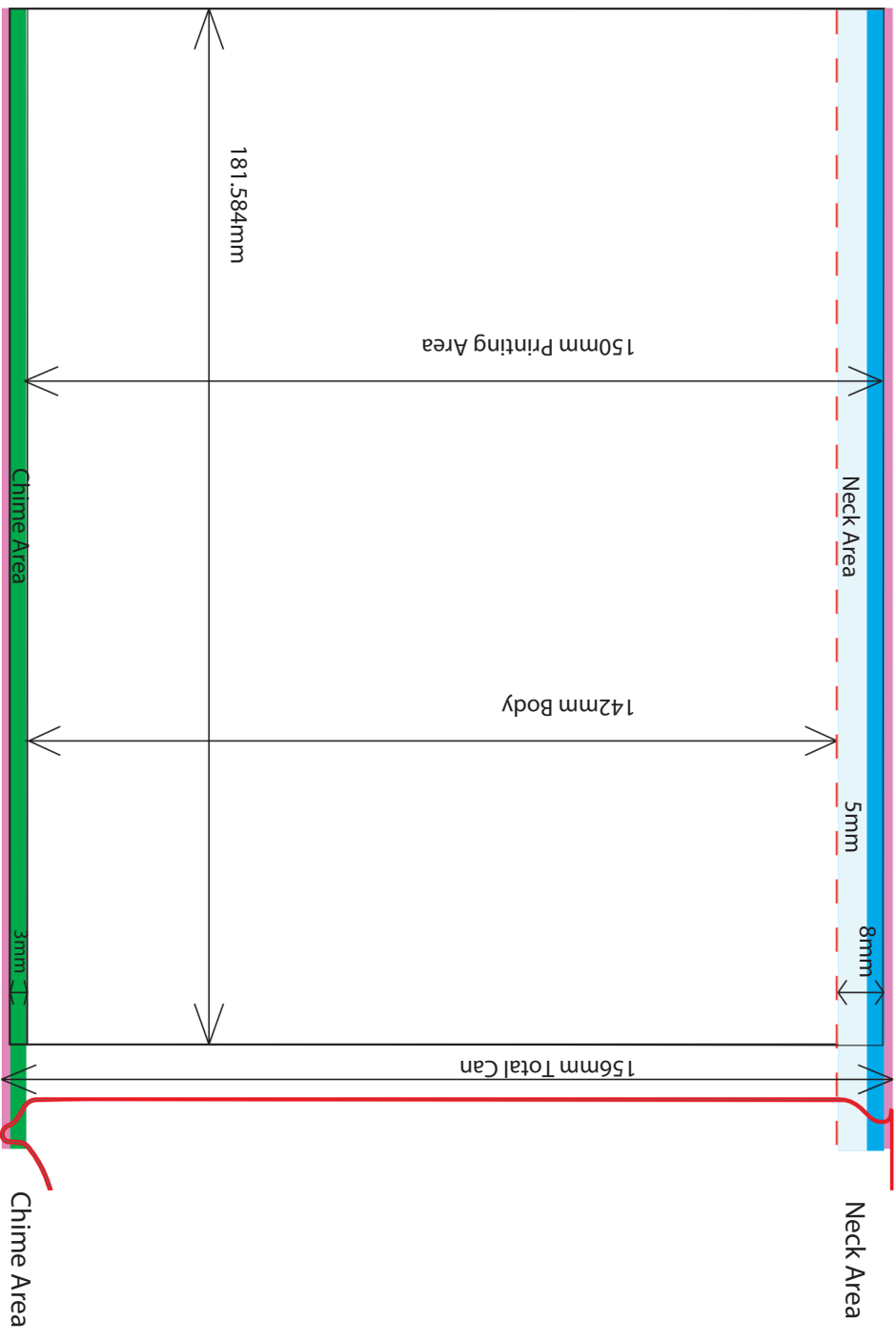
# ALUMINATE



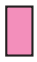
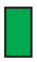
12oz Sleek Can

Printing File Size 181.584mm X 153mm

12oz Sleek Can

H: 153mm



-  Upper Neck Area (graphics only, no text) **W: 181.584mm**
-  Neck Text Safe Area
-  No Printing Area (1.5 Neck & Chime)
-  Optional Chime Area (graphics only, not text)