

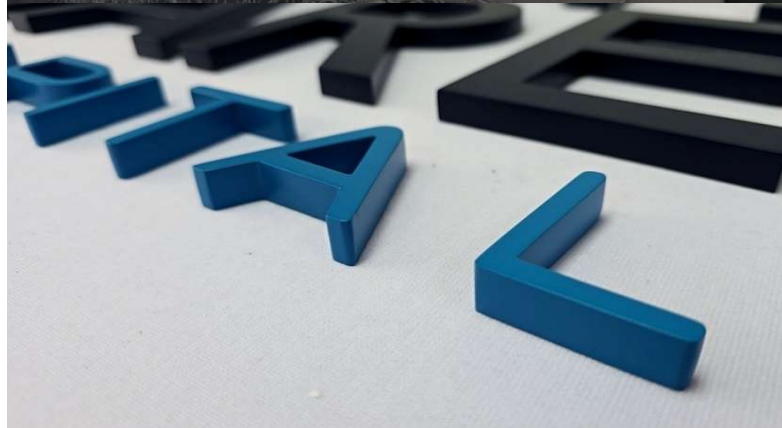
ETA SIGNS

Sales@ETASigns.com

(214) 423-9910

2026 Wholesale Price Catalog

ETAsigns.com



Sales@ETAsigns.com

(214)423-9910

2026 Wholesale Price Catalog

ETAsigns.com

TABLE OF CONTENTS

<u>PG. 4</u>	SOLID - FLAT CUT OUT - ALUMINUM
<u>PG. 5</u>	SOLID - FLAT CUT OUT - STAINLESS STEEL
<u>PG. 6</u>	FABRICATED FINISH GUIDE
<u>PG. 7</u>	FABRICATED NON-LIT
<u>PG. 8</u>	FABRICATED NON-LIT + METAL BACK
<u>PG. 9</u>	FABRICATED + LEXAN BACK (ADD YOUR OWN LEDs)
<u>PG. 10</u>	FABRICATED HALO-LIT
<u>PG. 11</u>	FABRICATED EDGE-LIT
<u>PG. 12</u>	FABRICATED FACE-LIT RIBBON
<u>PG. 13</u>	FABRICATED FACE-LIT TRIMLESS
<u>PG. 14</u>	EMBEDDED ACRYLIC
<u>PG. 15</u>	FAUX NEON
<u>PG. 16</u>	SHIPPING COSTS
<u>PG. 17</u>	FAQ'S

ETAsigns.com

SOLID - FLAT CUT OUT

ALUMINUM

Brushed (or) Painted



NOTES:

Lead Time

~ **approx (10) working days to ship**

Paper Install Template

~ **INCLUDED** at no extra cost

Lowercase Letters

~ List pricing x 75%

Fractional Sizes

~ Round up to the next largest size

Mounting

~ All prices 1/4" and thicker include stud mounting

ANODIZED Finishes

~ ADD 25% TO LISTED PRICES



WHOLESALE NET PRICING

Listed in USD - Per Character

		Depth of Letters			
		1/8"	1/4"	3/8"	1/2"
Largest Dimension of Letter (Height or Width)	1"	10.8	10.8		
	2"	11.3	11.3	18.9	25.4
	3"	14.6	14.6	22.1	30.2
	4"	19.4	19.4	29.2	35.1
	5"	22.7	22.7	34.0	40.0
	6"	27.5	27.5	36.7	44.8
	7"	33.5	33.5	45.9	49.7
	8"	35.1	35.1	48.6	52.4
	9"	37.3	37.3	54.0	58.9
	10"	40.5	40.5	57.8	62.1
	11"	44.8	44.8	62.1	70.7
	12"	47.0	47.0	67.5	78.3
	13"	51.3	51.3	BY QUOTE	
	14"	56.2	56.2		
	15"	62.1	62.1		
	16"	65.3	65.3		
	17"	71.8	71.8		
	18"	74.0	74.0		

Logos and Shapes by Quote

Larger Size Available by Quote

Shipping Costs on Page 16

Sales@ETAsigns.com

(214)423-9910

2026 Wholesale Price Catalog

ETAsigns.com

SOLID - FLAT CUT OUT

STAINLESS STEEL

Brushed



NOTES:

Lead Time

~ **approx (10) working days to ship**

Paper Install Template

~ **INCLUDED** at no extra cost

Lowercase Letters

~ List pricing x 75%

Fractional Sizes

~ Round up to the next largest size

Mounting

~ All prices 1/4" and thicker include stud mounting



WHOLESALE NET PRICING

Listed in USD - Per Character

	Depth of Letters		
	1/8"	1/4"	1/2"
Largest Dimension of Letter (Height or Width)	1"	14.6	
	2"	17.8	21.1
	3"	20.5	24.3
	4"	27.5	30.2
	5"	33.5	35.6
	6"	40.5	41.6
	7"	48.6	50.2
	8"	53.5	57.8
	9"	59.9	64.8
	10"	66.4	71.3
	11"	72.4	81.0
	12"	84.2	90.7
	13"	95.0	BY QUOTE
	14"	105.3	
	15"	115.0	
	16"	132.3	
	17"	142.6	
	18"	156.6	

Logos and Shapes by Quote

Larger Size Available by Quote

Shipping Costs on Page 16

Sales@ETAsigns.com

(214)423-9910

2026 Wholesale Price Catalog

ETAsigns.com

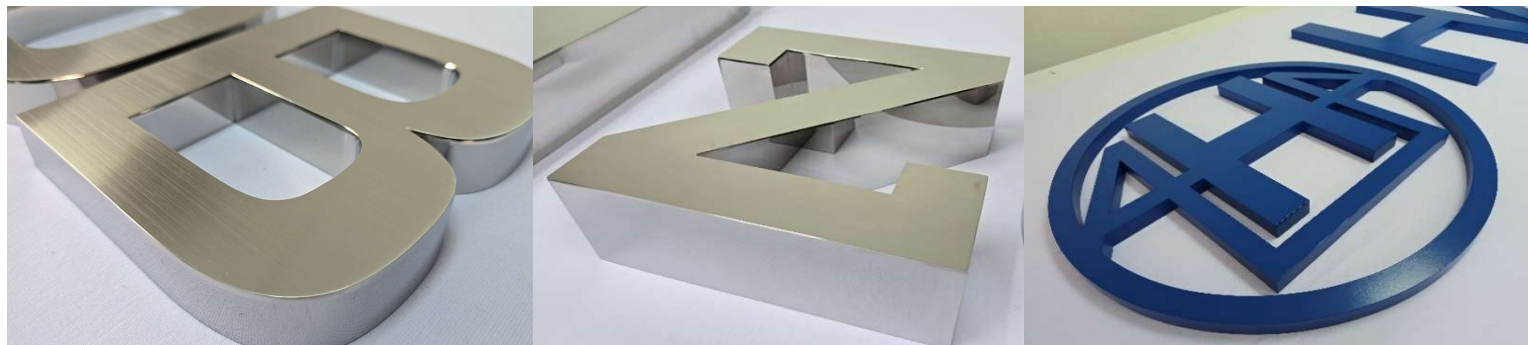
FABRICATED FINISH OPTIONS

INCLUDED FINISHES

#4 GRAINED

#8 MIRROR POLISHED

PAINTED



ADDITIONAL FINISHES + EXTRA COST

TITANIUMS COLORS - BRASS, BRONZE, COPPER, OXIDIZED AND BLACK - **BY QUOTE**



PAINT MASKING - **BY QUOTE**

316 ALLOY MARINE GRADE + 30%



Sales@ETAsigns.com

(214)423-9910

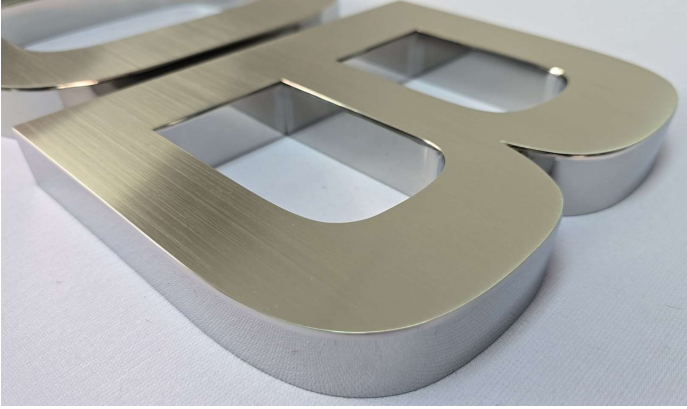
2026 Wholesale Price Catalog

ETAsigns.com

FABRICATED NON-LIT

STAINLESS STEEL

Brushed (or) Polished (or) Painted (PG.6)



NOTES:

Lead Time

~ **approx (10-12) working days to ship**

Paper Install Template

~ **INCLUDED** at no extra cost

Lowercase Letters

~ List pricing x 90%

Fractional Sizes

~ Round up to the next largest size

Mounting

~ All prices include stud mounting

TITANIUM FINISHES

~ AVAILABLE BY QUOTE



WHOLESALE NET PRICING

Listed in USD - Per Character

	Depth of Letters					
	0.5"	1"	1.5"	2"	2.5"	3"
1"						
2"						
3"	41.6	45.4	49.1	52.4	55.4	58.3
4"	41.6	45.4	49.1	55.1	59.4	63.7
5"	41.6	45.4	49.1	58.9	63.2	67.5
6"	43.7	47.0	52.4	60.5	66.7	72.9
7"	47.5	51.3	56.7	64.8	71.3	77.8
8"	50.8	56.7	60.5	69.7	77.5	85.3
9"	54.0	62.6	69.1	80.5	85.1	89.6
10"	58.3	69.1	73.4	85.3	90.7	96.1
11"	63.2	73.4	80.5	89.6	95.3	101.0
12"	68.6	78.8	84.8	96.7	102.6	108.5
13"	75.2	84.8	90.2	105.3	111.5	117.7
14"	80.9	91.3	101.5	116.1	123.1	130.1
15"	90.0	101.5	107.5	125.3	133.1	140.9
16"	94.8	106.9	115.0	132.8	141.8	150.7
17"	99.6	112.3	120.4	140.9	149.9	158.8
18"	106.8	120.4	130.7	152.3	161.5	170.6
19"	115.9	130.7	138.2	163.6	173.3	183.1
20"	120.7	136.1	148.5	173.3	182.8	192.2
21"	127.9	144.2	157.7	180.4	189.3	198.2
22"	137.5	155.0	170.6	189.5	196.8	204.1
23"	149.0	167.9	185.2	207.9	214.1	220.3
24"	164.8	185.8	207.9	230.6	238.1	245.7

Largest Dimension of Letter (Height or Width)

Logos and Shapes by Quote

Larger Size Available by Quote

Shipping Costs on Page 16

Sales@ETAsigns.com

(214)423-9910

2026 Wholesale Price Catalog

ETAsigns.com

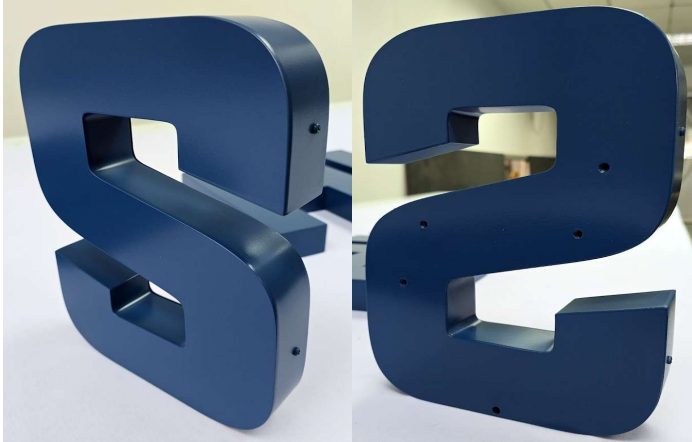
FABRICATED NON-LIT + METAL BACK

STAINLESS STEEL

Brushed (or) Polished (or) Painted (PG.6)

FRONT

BACK



NOTES:

Lead Time

~ **approx (10-12) working days to ship**

Paper Install Template

~ **INCLUDED** at no extra cost

Lowercase Letters

~ List pricing x 90%

Fractional Sizes

~ Round up to the next largest size

Mounting

~ All prices include stud mounting

TITANIUM FINISHES

~ AVAILABLE BY QUOTE



WHOLESALE NET PRICING

Listed in USD - Per Character

	Depth of Letters					
	0.5"	1"	1.5"	2"	2.5"	3"
1"		Smaller Sizes Available by Quote				
2"						
3"						
4"						
5"						
6"		61.1	68.1	78.6	86.7	94.8
7"		66.7	73.7	84.2	92.7	101.1
8"		73.7	78.6	90.6	100.7	110.9
9"		81.4	89.9	104.6	110.6	116.5
10"		89.9	95.5	110.9	117.9	125.0
11"		95.5	104.6	116.5	123.9	131.3
12"		102.5	110.2	125.7	133.4	141.1
13"		110.2	117.2	136.9	145.0	153.0
14"		118.6	132.0	150.9	160.1	169.2
15"		132.0	139.7	162.9	173.0	183.2
16"		139.0	149.5	172.7	184.3	195.9
17"		146.0	156.5	183.2	194.8	206.4
18"		156.5	169.9	198.0	209.9	221.8
19"		169.9	179.7	212.7	225.3	238.0
20"		176.9	193.1	225.3	237.6	249.9
21"		187.4	205.0	234.5	246.1	257.6
22"		201.5	221.8	246.4	255.9	265.4
23"		218.3	240.8	270.3	278.3	286.4
24"		241.5	270.3	299.8	309.6	319.4

Largest Dimension of Letter (Height or Width)

Logos and Shapes by Quote

Larger Size Available by Quote

Shipping Costs on Page 16

Sales@ETAsigns.com

(214)423-9910

2026 Wholesale Price Catalog

ETAsigns.com

FABRICATED + LEXAN BACK (ADD YOUR OWN LEDs)

STAINLESS STEEL

Brushed (or) Polished (or) Painted (PG.6)



NOTES:

Lead Time

~ **approx (10-12) working days to ship**

Paper Install Template

~ **INCLUDED** at no extra cost

Lowercase Letters

~ List pricing x 90%

Fractional Sizes

~ Round up to the next largest size

Mounting

~ All prices include stud mounting

TITANIUM FINISHES

~ AVAILABLE BY QUOTE



WHOLESALE NET PRICING

Listed in USD - Per Character

	Depth of Letters					
	0.5"	1"	1.5"	2"	2.5"	3"
	1"	Smaller Sizes Available by Quote				
	2"					
	3"					
	4"					
Largest Dimension of Letter (Height or Width)	5"					
	6"	61.1	68.1	78.6	86.7	94.8
	7"	66.7	73.7	84.2	92.7	101.1
	8"	73.7	78.6	90.6	100.7	110.9
	9"	81.4	89.9	104.6	110.6	116.5
	10"	89.9	95.5	110.9	117.9	125.0
	11"	95.5	104.6	116.5	123.9	131.3
	12"	102.5	110.2	125.7	133.4	141.1
	13"	110.2	117.2	136.9	145.0	153.0
	14"	118.6	132.0	150.9	160.1	169.2
	15"	132.0	139.7	162.9	173.0	183.2
	16"	139.0	149.5	172.7	184.3	195.9
	17"	146.0	156.5	183.2	194.8	206.4
	18"	156.5	169.9	198.0	209.9	221.8
	19"	169.9	179.7	212.7	225.3	238.0
	20"	176.9	193.1	225.3	237.6	249.9
	21"	187.4	205.0	234.5	246.1	257.6
	22"	201.5	221.8	246.4	255.9	265.4
	23"	218.3	240.8	270.3	278.3	286.4
	24"	241.5	270.3	299.8	309.6	319.4

Logos and Shapes by Quote

Larger Size Available by Quote

Shipping Costs on Page 16

Sales@ETAsigns.com

(214)423-9910

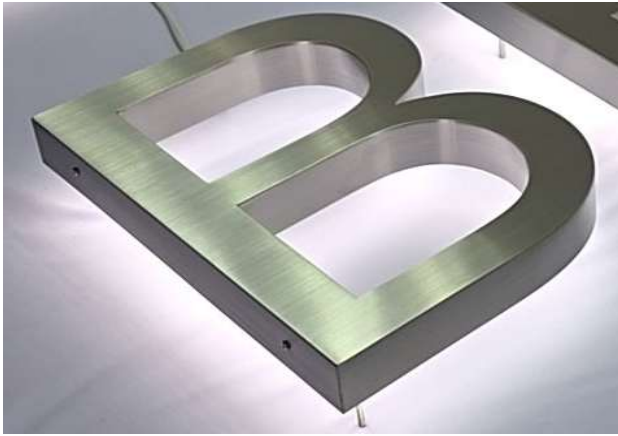
2026 Wholesale Price Catalog

ETAsigns.com

FABRICATED HALO-LIT

STAINLESS STEEL

Brushed (or) Polished (or) Painted (PG.6)



NOTES:

Lead Time

~ **approx (10-12) working days to ship**

Paper Install Template

~ **INCLUDED** at no extra cost

Lowercase Letters

~ List pricing x 90%

Fractional Sizes

~ Round up to the next largest size

Mounting

~ All prices include stud mounting

TITANIUM FINISHES

~ AVAILABLE BY QUOTE

COLORED ACRYLIC OR VINYL

~ AVAILABLE BY QUOTE



WHOLESALE NET PRICING

Listed in USD - Per Character

	Depth of Letters					
	0.5"	1"	1.5"	2"	2.5"	3"
	1"	Smaller Sizes Available by Quote				
	2"					
	3"					
	4"					
Largest Dimension of Letter (Height or Width)	5"					
	6"		91.8	104.3	116.9	
	7"		99.2	111.7	124.8	
	8"		110.0	122.6	135.7	
	9"		112.3	124.2	137.2	143.6
	10"		122.0	133.9	148.5	155.5
	11"		131.8	143.6	156.6	165.0
	12"		141.5	152.8	165.2	170.6
	13"		150.7	162.5	177.7	183.3
	14"		164.2	176.0	191.2	203.0
	15"		177.7	186.3	206.8	213.0
	16"		184.1	193.9	209.5	217.1
	17"		195.5	207.4	223.0	230.9
	18"		207.4	220.3	243.0	250.3
	19"		223.6	237.1	257.6	263.0
	20"		235.4	253.3	277.6	282.4
	21"		247.3	268.9	294.8	298.4
	22"		263.0	286.7	311.0	315.1
	23"		278.6	305.1	333.7	337.0
	24"		304.0	331.6	363.4	366.4

Logos and Shapes by Quote

Larger Size Available by Quote

Shipping Costs on Page 16

PRICING INCLUDES:

~ LEDs - Standard 6500k White

(or) 3000k Warm White, Red, Green, Blue

~ Class 2 Power Supplies - Meanwell LPV-60-12

~ 10ft 2-wire Power Leads

~ UL Labels

*RGB LEDs are available BY QUOTE



Sales@ETAsigns.com

(214)423-9910

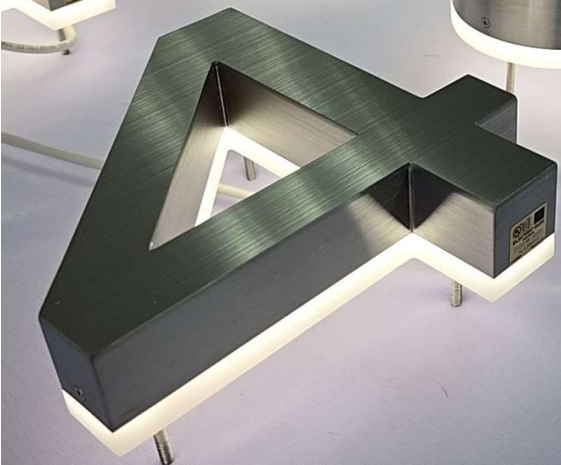
2026 Wholesale Price Catalog

ETAsigns.com

FABRICATED EDGE-LIT

STAINLESS STEEL

Brushed (or) Polished (or) Painted (PG.6)



NOTES:

Lead Time

~ **approx (10-12) working days to ship**

Paper Install Template

~ **INCLUDED** at no extra cost

Lowercase Letters

~ List pricing x 90%

Fractional Sizes

~ Round up to the next largest size

Mounting

~ All prices include stud mounting

TITANIUM FINISHES

~ AVAILABLE BY QUOTE

COLORED ACRYLIC OR VINYL

~ AVAILABLE BY QUOTE



WHOLESALE NET PRICING

Listed in USD - Per Character

	Depth of Letters					
	0.5"	1"	1.5"	2"	2.5"	3"
1"		Smaller Sizes Available by Quote				
2"						
3"						
4"						
5"						
6"		127.1	133.4	139.6		
7"		137.5	144.9	152.3		
8"		146.2	153.8	161.4		
9"		165.8	173.4	181.0	191.6	202.2
10"		179.7	187.2	194.8	205.9	217.1
11"		194.1	201.4	208.6	219.7	230.8
12"		207.4	214.9	222.4	233.4	244.5
13"		221.3	229.9	238.4	251.8	265.1
14"		240.4	252.0	263.7	277.5	291.4
15"		260.0	270.2	280.4	294.7	309.1
16"		274.5	282.0	289.6	305.3	321.1
17"		287.7	299.3	310.8	327.4	343.9
18"		311.4	323.8	336.1	354.6	373.1
19"		336.3	349.4	362.5	379.0	395.4
20"		356.5	368.4	380.4	396.7	413.1
21"		370.9	384.3	397.6	415.0	432.5
22"		396.4	409.3	422.3	439.7	457.1
23"		419.5	434.1	448.7	467.5	486.2
24"		447.2	464.3	481.5	501.0	520.5

Largest Dimension of Letter (Height or Width)

Logos and Shapes by Quote

Larger Size Available by Quote

Shipping Costs on Page 16

PRICING INCLUDES:

~ LEDs - Standard 6500k White

(or) 3000k Warm White, Red, Green, Blue

~ Class 2 Power Supplies - Meanwell LPV-60-12

~ 10ft 2-wire Power Leads

~ UL Labels

*RGB LEDs are available BY QUOTE



Sales@ETAsigns.com

(214)423-9910

2026 Wholesale Price Catalog

ETAsigns.com

FABRICATED FACE-LIT RIBBON

STAINLESS STEEL

Brushed (or) Polished (or) Painted (PG.6)



NOTES:

Lead Time

~ **approx (10-12) working days to ship**

Paper Install Template

~ **INCLUDED** at no extra cost

Lowercase Letters

~ List pricing x 90%

Fractional Sizes

~ Round up to the next largest size

Mounting

~ All prices include stud mounting

TITANIUM FINISHES

~ AVAILABLE BY QUOTE

COLORED ACRYLIC OR VINYL

~ AVAILABLE BY QUOTE



WHOLESALE NET PRICING

Listed in USD - Per Character

	Depth of Letters					
	0.5"	1"	1.5"	2"	2.5"	3"
1"						
2"						
3"						
4"						
5"						
6"				184.9		
7"				192.6		
8"				200.6		
9"				209.0	220.6	232.2
10"				220.6	232.9	245.2
11"				231.8	244.7	257.6
12"				234.3	247.3	260.3
13"				244.0	257.5	271.1
14"				259.5	273.9	288.4
15"				271.7	286.8	301.9
16"				273.1	288.3	303.5
17"				286.7	302.7	318.6
18"				303.3	320.1	337.0
19"				315.4	332.9	350.5
20"				330.0	348.3	366.7
21"				344.1	363.2	382.3
22"				363.0	383.2	403.4
23"				383.5	404.8	426.1
24"				408.2	430.9	453.6

Largest Dimension of Letter (Height or Width)

Logos and Shapes by Quote

Larger Size Available by Quote

Shipping Costs on Page 16

PRICING INCLUDES:

~ LEDs - Standard 6500k White

(or) 3000k Warm White, Red, Green, Blue

~ Class 2 Power Supplies - Meanwell LPV-60-12

~ 10ft 2-wire Power Leads

~ UL Labels

*RGB LEDs are available BY QUOTE



Sales@ETAsigns.com

(214)423-9910

2026 Wholesale Price Catalog

ETAsigns.com

FABRICATED FACE-LIT TRIMLESS

STAINLESS STEEL

Brushed (or) Polished (or) Painted (PG.6)



NOTES:

Lead Time

~ **approx (10-12) working days to ship**

Paper Install Template

~ **INCLUDED** at no extra cost

Lowercase Letters

~ List pricing x 90%

Fractional Sizes

~ Round up to the next largest size

Mounting

~ All prices include stud mounting

TITANIUM FINISHES

~ AVAILABLE BY QUOTE

COLORED ACRYLIC OR VINYL

~ AVAILABLE BY QUOTE



WHOLESALE NET PRICING

Listed in USD - Per Character

		Depth of Letters					
		0.5"	1"	1.5"	2"	2.5"	3"
Largest Dimension of Letter (Height or Width)	1"						
	2"						
	3"			153.9	159.8		
	4"			164.7	167.9		
	5"			171.2	176		
	6"			184.1	190.1		
	7"			194.4	200.9		
	8"			202.5	209.0		
	9"			214.9	221.9	233.8	245.7
	10"			227.3	234.9	247.9	260.8
	11"			239.2	246.8	260.6	274.3
	12"			253.8	261.4	275.4	289.4
	13"				274.9	289.7	304.6
	14"				290.5	305.9	321.3
	15"				306.7	322.9	339.1
	16"				322.9	340.2	357.5
	17"				338.0	356.1	374.2
	18"				357.5	376.7	395.8
	19"				374.2	394.5	414.7
	20"				393.1	413.9	434.7
	21"				413.1	435.0	456.8
	22"				434.7	457.7	480.6
	23"				457.4	480.6	503.8
	24"				487.6	511.7	535.7

Logos and Shapes by Quote

Larger Size Available by Quote

Shipping Costs on Page 16

PRICING INCLUDES:

~ LEDs - Standard 6500k White

(or) 3000k Warm White, Red, Green, Blue

~ Class 2 Power Supplies - Meanwell LPV-60-12

~ 10ft 2-wire Power Leads

~ UL Labels

*RGB LEDs are available BY QUOTE



Sales@ETAsigns.com

(214)423-9910

2026 Wholesale Price Catalog

ETAsigns.com

EMBEDDED ACRYLIC
ACRYLIC
MANY DIFFERENT LIT OPTIONS

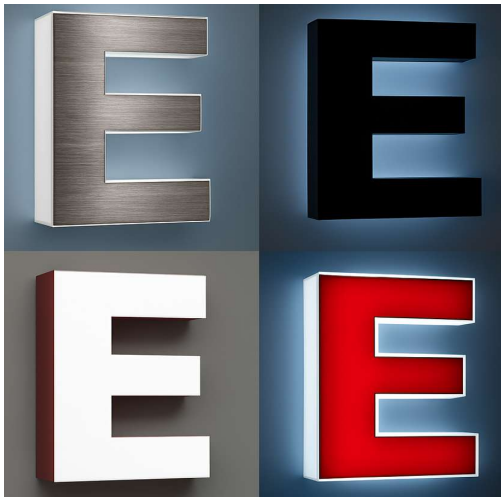
WHOLESALE NET PRICING
Listed in USD - Per Character



FULL LIT

	30mm
1"	
2"	
3"	
4"	153.9
5"	163.6
6"	172.8
7"	183.6
8"	193.3
9"	208.4
10"	221.9
11"	232.7
12"	249.5
13"	275.9
14"	299.2
15"	318.6
16"	334.3
17"	361.8
18"	375.3

Largest Dimension of Letter (Height or Width)



PARTIAL LIT

	30mm
1"	
2"	
3"	
4"	171.2
5"	182.0
6"	191.7
7"	204.1
8"	213.8
9"	228.4
10"	244.1
11"	256.0
12"	275.9
13"	303.5
14"	328.3
15"	352.1
16"	367.2
17"	396.9
18"	412.6

Largest Dimension of Letter (Height or Width)

NOTES:

Lead Time
~ **approx (10-12) working days to ship**

Paper Install Template
~ **INCLUDED** at no extra cost

Lowercase Letters
~ List pricing x 90%

Fractional Sizes
~ Round up to the next largest size

Mounting
~ All prices include stud mounting

Logos and Shapes by Quote

Larger Size Available by Quote

Shipping Costs on Page 16



PRICING INCLUDES:
~ LEDs - Standard 6500k White
(or) 3000k Warm White, Red, Green, Blue
~ Class 2 Power Supplies - Meanwell LPV-60-12
~ 10ft 2-wire Power Leads
~ UL Labels
*RGB LEDs are available BY QUOTE



Sales@ETAsigns.com **(214)423-9910**

2026 Wholesale Price Catalog

ETAsigns.com

FAUX NEON ACRYLIC



SINGLE LINE

Option 1
12 mm stroke

Option 2
15 mm stroke

	30mm
1"	
2"	
3"	
4"	155.6
5"	163.8
6"	172.4
7"	181.5
8"	191.0
9"	214.9
10"	238.8
11"	262.7
12"	286.6
13"	310.4
14"	334.3
15"	358.2
16"	382.1
17"	406.0
18"	429.8

Largest Dimension of Letter (Height or Width)

WHOLESALE NET PRICING Listed in USD - Per Character



DOUBLE LINE

COLOR OPTIONS
Red - Orange - Yellow
Green - Blue - Purple

	30mm
1"	
2"	
3"	
4"	225.6
5"	237.5
6"	250.0
7"	263.2
8"	277.0
9"	311.6
10"	346.3
11"	380.9
12"	415.6
13"	450.1
14"	484.7
15"	519.4
16"	554.0
17"	588.7
18"	623.2

Largest Dimension of Letter (Height or Width)

NOTES:

Lead Time

~ **approx (10-12) working days to ship**

Paper Install Template

~ **INCLUDED** at no extra cost

Lowercase Letters

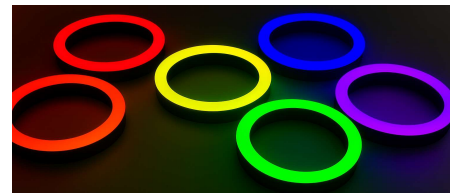
~ List pricing x 90%

Fractional Sizes

~ Round up to the next largest size

Mounting

~ All prices include stud mounting



Logos and Shapes by Quote

Larger Size Available by Quote

Shipping Costs on Page 16

PRICING INCLUDES:

~ LEDs - Standard 6500k White
(or) 3000k Warm White, Red, Green, Blue
~ Class 2 Power Supplies - Meanwell LPV-60-12
~ 10ft 2-wire Power Leads
~ UL Labels
*RGB LEDs are available BY QUOTE



Sales@ETAsigns.com

(214)423-9910

2026 Wholesale Price Catalog

FIXED SHIPPING COSTS

All orders are are shipped via International Priority.

Orders should be delivered approx 2-5 working days after they ship from our manufacturing facility.

Shipping rates listed are for a single destination.

Items larger than the listed catalog pricing, may be considered oversized and will require custom shipping costs provided via quote.

All final invoices will have the Tracking Number listed as the last line item on the invoice.

Order Total	Shipping Cost
\$1 to \$449	\$50.00
\$450 to \$799	\$70.00
\$800 to \$1,199	\$90.00
\$1,200 to \$1,599	\$110.00
\$1,600 to \$1,999	\$140.00
\$2,000 to \$3,499	\$200.00
\$3,500 to \$4,999	\$300.00
\$5,000 to \$7,499	\$365.00
over \$7,500	\$390.00

ETAsigns.com

FAQ's

QUOTES - All pricing provided as a quote is to the best of our understanding given the specifications we can see and how they relate to the closest product we can offer within our standard product lines.

CATALOG PRICING - All pricing provided in our catalog are based on our standard specifications. We encourage you to ask for a custom quote on anything other than the most straight forward projects. All pricing listed is in USD and is subject to change without notice.

PLACING AN ORDER - All order placement must be done in writing via email. You should receive an Order Confirmation within (1) business day of placing your order. If you do not receive an Order Confirmation please contact us immediately as something was likely not received.

ARTWORK - All orders must include full size vector artwork provided by the customer. Artwork can be sent in either .AI or .EPS or .PDF format as long as it is vectored and full size. Please be aware that we do NOT send art proofs on most orders. If you receive an Order Confirmation then your artwork has been accepted and we are proceeding with production based on your exact artwork. We will ONLY send and art proof is something needs to be changed from your originally provided artwork.

LEAD TIMES - All lead times quoted are approximate and do NOT include shipping transit time.

TERMS - All orders will be invoiced per your account terms. All payments will be made through our provided [payment link](#). This link will be included in our final invoicing email.

WARRANTY - ETA Signs guarantees all of it's products to be free of defects in material and workmanship for a period of 5 years. Should our product contain a defect in material or workmanship, ETA Signs will replace the defective product at no charge. This warranty is limited to the product and quantities found to be defective. All products must be shown to be defective with plenty of high resolution and close up photography. ETA Signs is NOT liable directly or indirectly for any costs of installation, removal, re-installation, damage, loss of use or injury arising out of the use of our product. Before using, purchaser shall determine the suitability of the product for its intended use and the purchaser assumes all risk and liability whatsoever in connection therewith. No other warranty is expressed or implied.

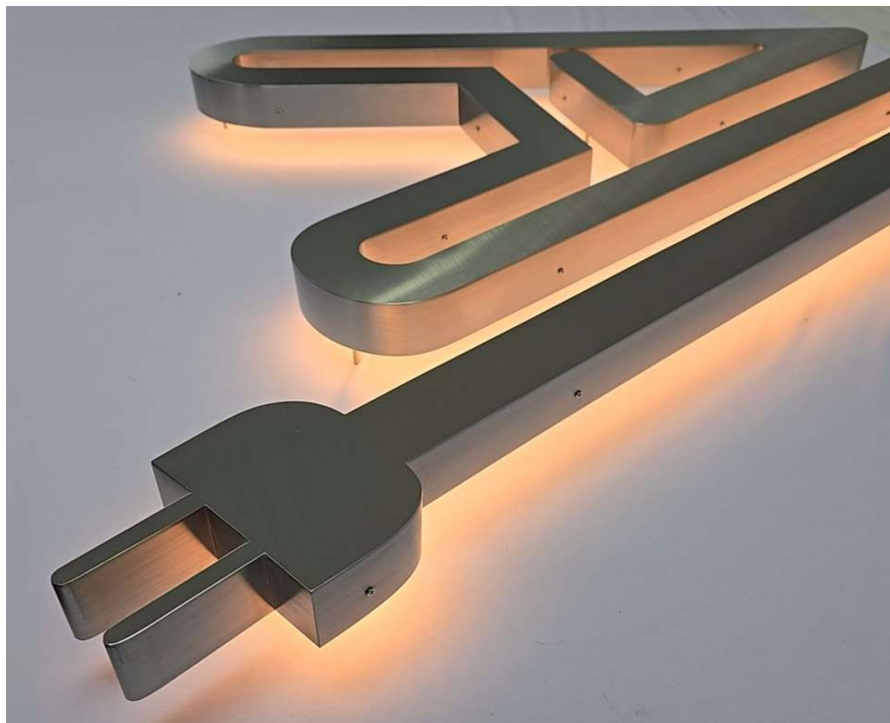


PRICE MATCH - ETA Signs will happily price match any listed direct competitor. Our pricing should already be the most competitive amongst our peers. However, if you receive a lesser quote from Gemini, Steel Art, Matthews, or Bitro just send us a copy of the quote and we'll beat it!

Sales@ETAsigns.com

(214)423-9910

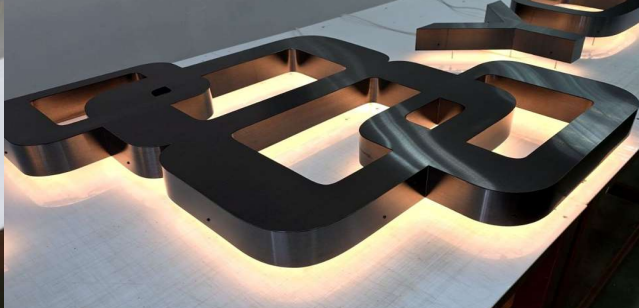
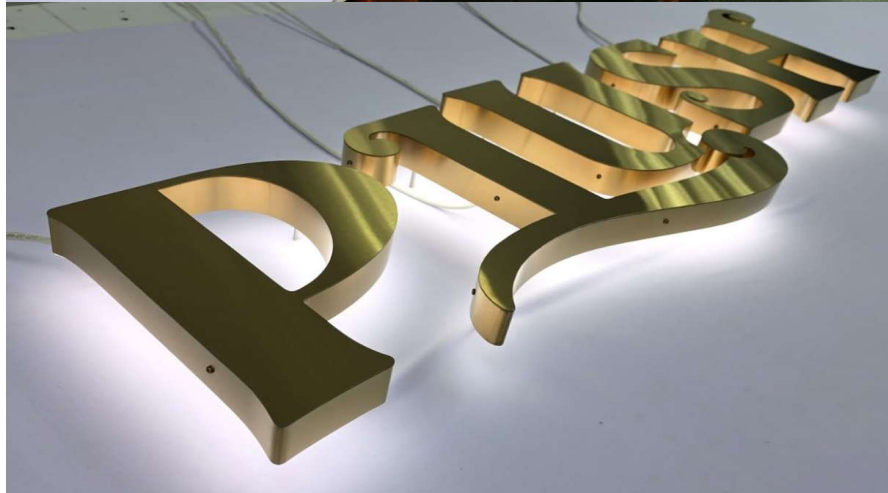
2026 Wholesale Price Catalog



Sales@ETAsigns.com

(214)423-9910

2026 Wholesale Price Catalog



Sales@ETAsigns.com

(214)423-9910

2026 Wholesale Price Catalog

ETA SIGNS

Sales@ETASigns.com

(214) 423-9910

2026 Wholesale Price Catalog