

WEEKLY

UPDATE

Take a look at
what's coming up!



Week of
June 8th

Where are We in the Strategic Planning Process?

June 25'

Strategic Plan Launch

May 25'

Strategic Planning Retreat

March-April 25'

Cottage Meetings

January- March 25'

Facilities Assessment

January 25'

Visioning Retreat

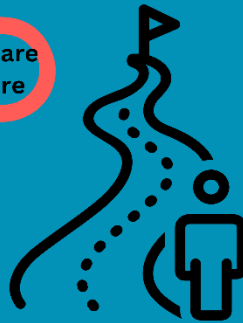
November 24' - January 25'

Train Teams, Community Assessment

September -October 24'

Recruit Teams, God @ the

Core Worship Series



Listening for God
Planning for the Future



Together in Faith



Pub Theology will be meeting on at the Turbotville Public House on June 12th at 7pm! We hope you join us for this opportunity for fellowship!!





MILTON LUTHERAN CHURCH
1125 MAHONING ST. MILTON, PA

MOVERS & SHAKERS

SENIOR'S GROUP

TUESDAY, JUNE 17TH 10:30AM - 12:30PM

MEAL

CONVERSATION

BINGO



Contact
Helen
Billhime if
interested
in donating
flowers for
an open
Sunday.





Bible Study at May's Drive-In (2675 PA-405 Milton PA). We are excited to continue our Breakfast Club Bible Study from 9am-10am on Tuesdays! We hope you join us to explore the upcoming Sunday's texts with us! See you there!

Milton Lutheran Church has kicked off our matching funds campaign for Camp Mount Luther!

Over the next month you'll be hearing from people in the congregation about their love for Camp Mount Luther and the ministry camp provides.

For more information on who and what this campaign benefits, visit Camp Mount Luther's website and navigate to their campaign page, or talk with Pastor Gary or CarolAnn.





moving forward CAMPAIGN

HELP US REACH OUR
\$75,000 GOAL!

We wanted to say a special word of thanks to everyone who has contributed to this campaign so far. **To date we have raised \$26,530.** Due to some unexpected expenses that have come up this year our Church Council has decided to conduct a special appeal to help offset the cost for the purchase of a new steam boiler, reseal the parking lot at 100 Mahoning St., moving expenses, and fixing the air conditioning at 1125 Mahoning St. We invite you to make a contribution to help cover these expenses. You can do so by making a contribution through your regular giving or make a contribution online through Tithe.ly. Please just be sure to place 'Moving Forward Campaign' in the memo line.

July 6th
11:30 A.M.- 12:30 P.M.

Self- Care Sanctuary



MILTON
Lutheran Church

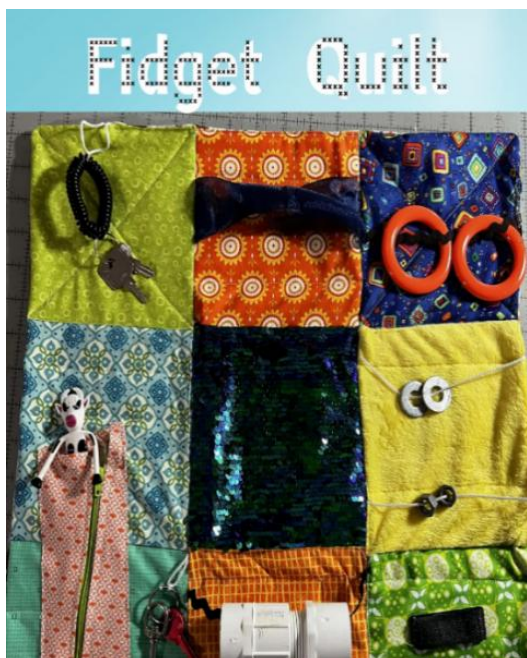
1125 Mahoning St.
Milton, PA

Free hygiene
/ self-care
products for
anyone that
needs them.




For the month of June, we are requesting donations of
dish washing liquid.

We appreciate anything you can give to this ministry!



Our Fidget Quilt group
has changed their
meeting schedule!

The meeting dates for
this year are:

September 3rd

And December 3rd!

If you have any
questions, contact
Connie Stover.



Our pet pantry is the first Sunday of the month from 11:30am-12:30pm held in conjunction with our Self-Care Sanctuary. Our next one is July 6th.



JULY 20TH!

The game starts at 4:05 pm.

\$6 per ticket

Children under the age of 5 are free- if sitting on an adults lap.

Come early and stay late! Players will be signing autographs 3:20-3:45. After the game all children 12 and under can run the bases.

Order your tickets through the office, either by emailing or calling! Must be signed up AND paid by July 6th.

The poster features a blue background with a baseball field and stadium lights. At the top, the text "LUTHERAN NIGHT AT THE PARK" is displayed in large, bold, red and white letters. Below this, the logos for the participating teams are shown. On the left, there are three circular logos: "Christ's Evangelical Lutheran Church" (featuring a cross and a dove), "United In Christ Lutheran Church" (featuring a tree), and "MILTON Lutheran Church" (featuring a cross and a tree). In the center, the word "VS" is written in large, bold, red letters. On the right, the "WILLIAMSPORT CROSSCUTTERS" logo is displayed, featuring a cartoon character holding a baseball bat. At the bottom, the text "SUNDAY, JULY 20 @ 4:05PM" is written in large, bold, red letters. Below this, the "Signup Deadline: Sunday, July 6th" and "Ticket Price: \$6/Person" are written in white text.

**LUTHERAN
NIGHT
AT THE PARK**

VS

**WILLIAMSPORT
CROSSCUTTERS**

SUNDAY, JULY 20 @ 4:05PM

Signup Deadline: Sunday, July 6th
Ticket Price: \$6/Person

ANNOUNCEMENTS FROM OUR FRIENDS



This summer, Camp Mount Luther has an AMAZING program, with opportunities for all ages! There's overnight camp, day camp, off-site camps, mini-camp, and family camp!

Pastor Gary and Pastor Stina are going to be the chaplains for family camp and would LOVE to see you there that week! Family Camp runs from June 29th until July 2nd.

If you have any questions about camp, don't hesitate to ask CarolAnn in the office. She has worked at CML 5 summers, and LOVES to talk about camp!