

WEEKLY

UPDATE

Take a look at
what's coming up!



Week of
June 1st

Where are We in the Strategic Planning Process?

June 25'

Strategic Plan Launch

May 25'

Strategic Planning Retreat

March-April 25'

Cottage Meetings

January- March 25'

Facilities Assessment

January 25'

Visioning Retreat

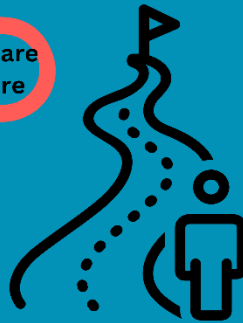
November 24' - January 25'

Train Teams, Community Assessment

September -October 24'

Recruit Teams, God @ the

Core Worship Series



Listening for God Planning for the Future



Together in Faith

CarolAnn will be out of office from May 15th – June 2nd. Please be patient if it takes us longer to get back to you or if things take a little longer to get done! Thank you!



Pub Theology will be meeting on at the Turbotville Public House on June 12th at 7pm! We hope you join us for this opportunity for fellowship!!



FELLOWSHIP HOUR

**SUNDAY,
JUNE 8TH & 22ND**

FOLLOWING WORSHIP

In our fellowship hall.

JOIN US AT



Knoebels

Sunday, June 22nd @ 1pm, Pavilion C

**Burgers & Dogs Provided!
Bring a side dish to share!**



NEW MEMBER SUNDAY

On June 8th, Milton Lutheran Church will be officially welcoming all new members!

If anyone is interested in joining MLC and has not yet done so, please contact Pastor Gary.



MILTON LUTHERAN CHURCH
1125 MAHONING ST. MILTON, PA

MOVERS & SHAKERS SENIOR'S GROUP

TUESDAY, JUNE 17TH 10:30AM - 12:30PM

MEAL

CONVERSATION

BINGO

Contact
Helen
Billhime if
interested
in donating
flowers for
an open
Sunday.



Open Sunday's for Flower Donations

June 1st
July 6th
July 27th



CAMP MOUNT LUTHER

**United In Christ
Lutheran Church**

**MILTON
Lutheran Church**

David's Covenant Lutheran Church

SUMMER • DAY CAMP •

NEW! **JULY 14-18 • 9AM-3PM**
1125 MAHONING STREET, MILTON, PA
FOR STUDENTS COMPLETING GRADES K-5

REGISTER TODAY!

WWW.MYVBS.ORG/MILTONLUTHERANCHURCHES



Bible Study at May's Drive-In (2675 PA-405 Milton PA) is BACK! We are excited to start up our Breakfast Club Bible Study from 9am-10am on Tuesdays! We hope you join us to explore the upcoming Sunday's texts with us! See you there!

This week we will be looking at Acts 2:1-21, Psalm 104:24-34, 35b, and John 14:8-17, 25-27.



moving forward CAMPAIGN

HELP US REACH OUR
\$75,000 GOAL!

We wanted to say a special word of thanks to everyone who has contributed to this campaign so far. **To date we have raised \$26,530.** Due to some unexpected expenses that have come up this year our Church Council has decided to conduct a special appeal to help offset the cost for the purchase of a new steam boiler, reseal the parking lot at 100 Mahoning St., moving expenses, and fixing the air conditioning at 1125 Mahoning St. We invite you to make a contribution to help cover these expenses. You can do so by making a contribution through your regular giving or make a contribution online through Tithe.ly. Please just be sure to place 'Moving Forward Campaign' in the memo line.

June 1st
11:30 A.M.- 12:30 P.M.

Self-Care Sanctuary


MILTON
Lutheran Church
1125 Mahoning St.
Milton, PA

Free hygiene
/ self-care
products for
anyone that
needs them.



For the month of June, we are requesting donations of
dish washing liquid.

We appreciate anything you can give to this ministry!

Fidget Quilt



Our Fidget Quilt group
has changed their
meeting schedule!

The meeting dates for
this year are:

June 4th

September 3rd

And December 3rd!

If you have any
questions, contact
Connie Stover.



Our pet pantry is the first Sunday of the month from 11:30am-12:30pm held in conjunction with our Self-Care Sanctuary. Our next one is June 1st.

Our next meeting of Faith Lab is on June 8th at Milton Lutheran Church (1125 Mahoning St. Milton, PA 17847). From 4pm-6pm. Free family dinner. Register above via the QR code.

A colorful advertisement for 'Buffalo Valley Faith Lab'. The title 'BUFFALO VALLEY FAITH LAB' is prominently displayed in blue. To the right is a large QR code. Below the title, there are icons of a cross, gears, and a bar chart. The text 'You're invited to the launch of a new monthly family faith formation program!' is at the bottom left. On the right, it says 'Second Sunday of the Month 4:00pm-6:00pm' and 'Free family dinner!'. Below this, it says 'Sponsored by:' followed by three logos: 'Church's Cooperative Lutheran Office', 'MILTON Lutheran Church', and 'United In Christ Lutheran Church'.

Milton Lutheran Church is preparing to kick off our matching funds campaign for Camp Mount Luther!

Over the next month you'll be hearing from people in the congregation about their love for Camp Mount Luther and the ministry camp provides.

For more information on who and what this campaign benefits, visit Camp Mount Luther's website and navigate to their campaign page, or talk with Pastor Gary or CarolAnn.

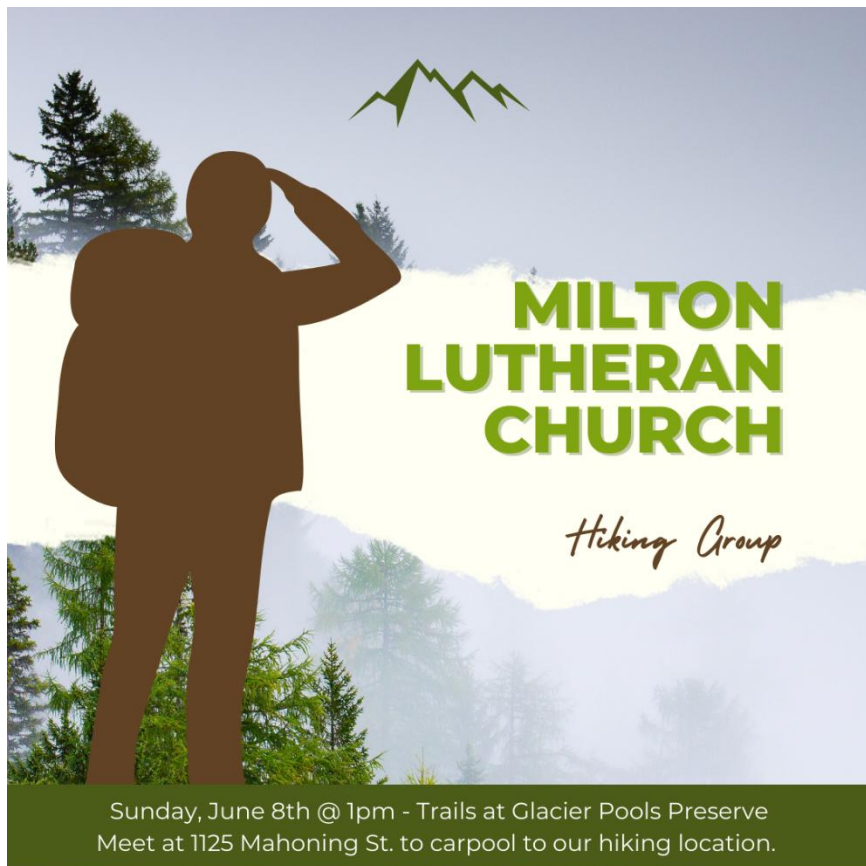




In this five week worship series, we will be exploring our vision statement together.

If you are graduating this year, send a photo, where you're graduating from, and what your next steps are to the office by June 4th to have them put in the announcements!





Sunday, June 8th @ 1pm - Trails at Glacier Pools Preserve
Meet at 1125 Mahoning St. to carpool to our hiking location.

Sunday, June 8, 2025

Trails at Glacier Pools Preserve

Easy 3 mile hike

Aprox. ½ hour drive. We will from the church lot at 12:30 pm. Others can meet us at the trailhead parking lot at 757 Pine Tree Road, Hughesville, about 1:00 pm. We will stop at the Angus Inn in Hughesville for refreshments on the way home.

ANNOUNCEMENTS FROM OUR FRIENDS



This summer, Camp Mount Luther has an AMAZING program, with opportunities for all ages! There's overnight camp, day camp, off-site camps, mini-camp, and family camp!

Pastor Gary and Pastor Stina are going to be the chaplains for family camp and would LOVE to see you there that week! Family Camp runs from June 29th until July 2nd.

If you have any questions about camp, don't hesitate to ask CarolAnn in the office. She has worked at CML 5 summers, and LOVES to talk about camp!