

POWER WALL

5KWH



Power Wall- 5KWH

➤ Safety and Reliable

- High energy density 3.2V 100Ah cell
- Popular LiFePO4 battery capacity:5KWH
- Long life cycle time >6000 cycles
- Charge and discharge more balance via smart BMS

➤ Flexibility and Compatible

- Store energy from the grid or solar
- Total energy extends to 90KWH by parallel battery packs
- Installation: Power / Wall mounted
- Monitor and Optimize by Smartphone App / computer (optional)



Product Details

➤ Key Features

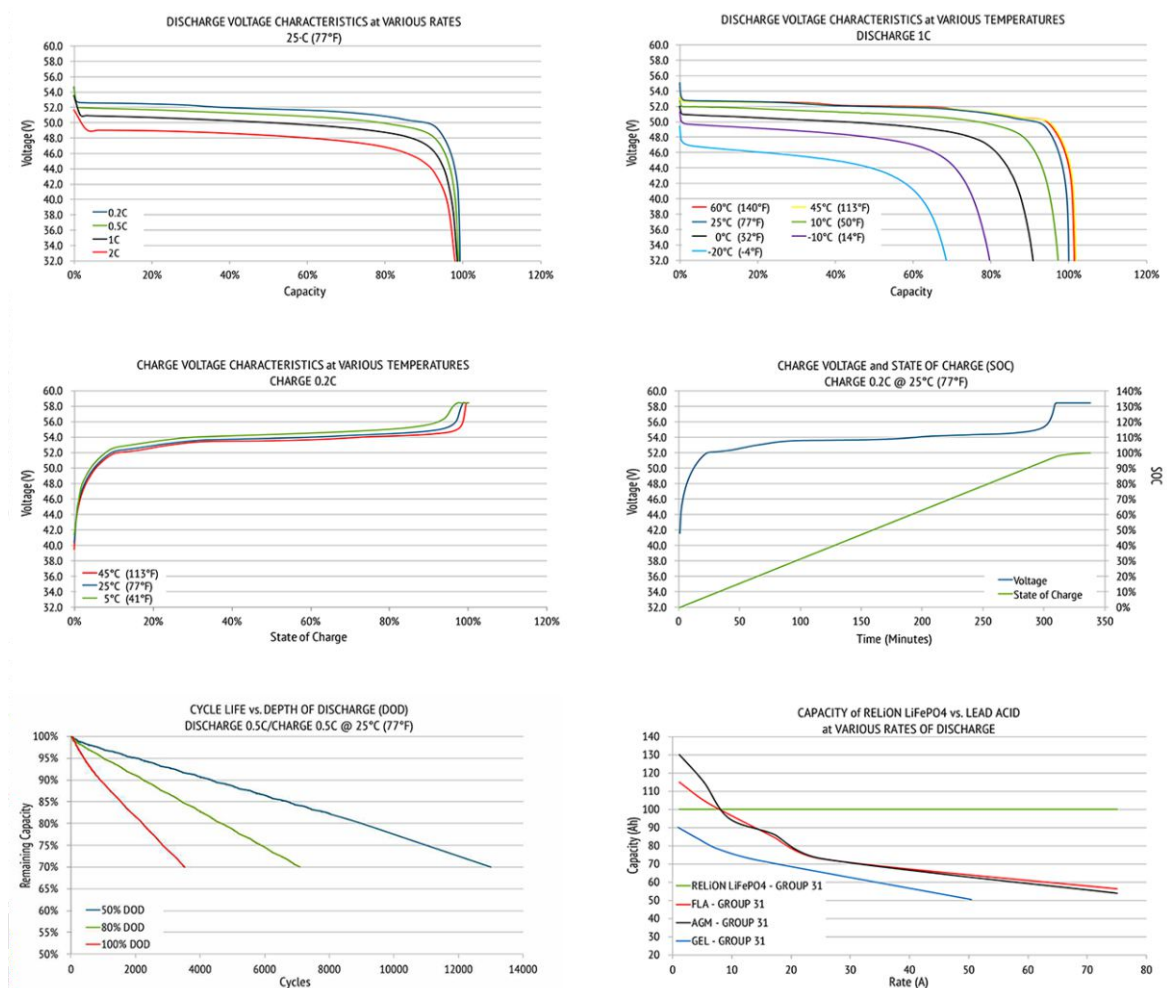
- Advanced BMS protection functionality
- Overcharge/overdischarge protection
- Short circuit protection
- One-key switch, safe and efficient.
- Support customization
- Match all inverter brands
- CE, ROHS, UN38.3



Technical Data

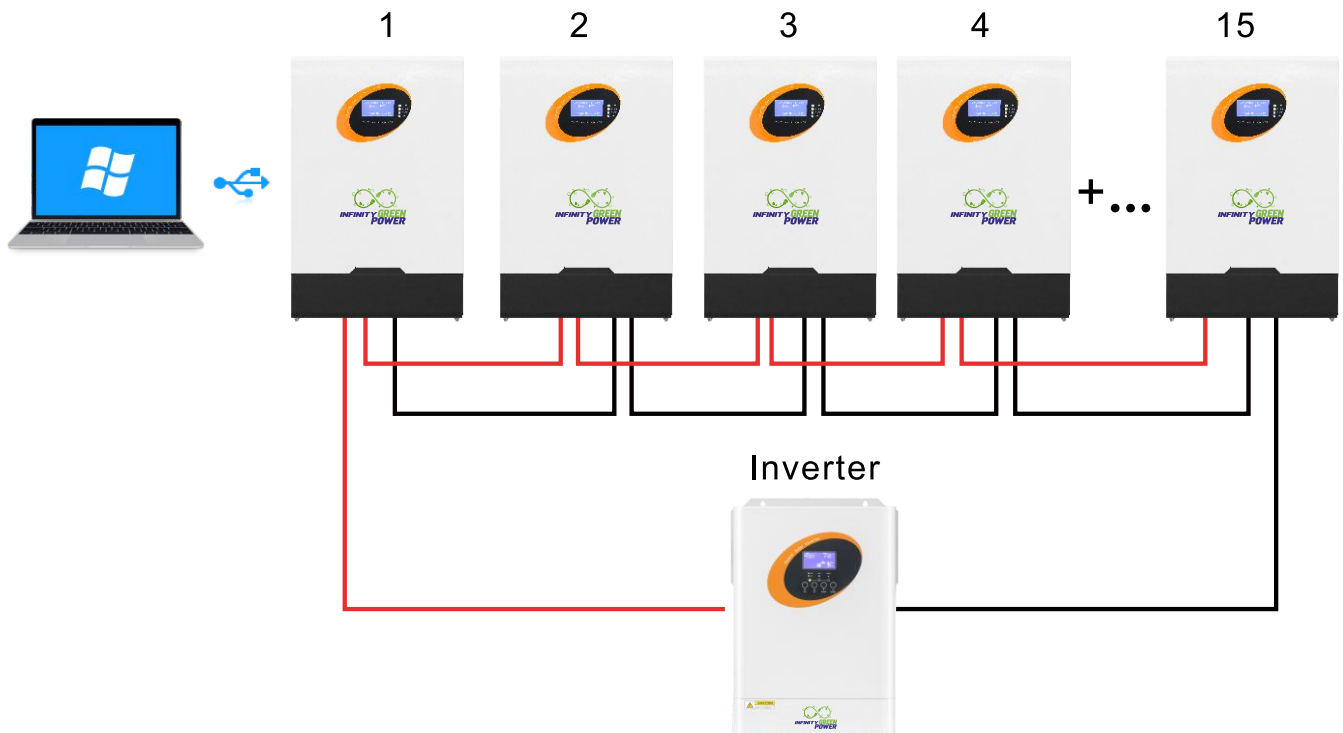
Specification	Description
Total Energy	5KWh
Battery Type	LiFePO4
Normal Voltage	51.2V
Normal Capacity	100Ah
Max.Charge/ Discharge Current	100A
Cycle Life	> 6000cycle
Communication Interface	CAN / RS232 / RS485
Battery Cell Brand	EVE Battery Cell
Dimension	635*400*165mm
Weight	47kg
Grade	A
Inverter	Match all hybrid and off grid inverter brands in the world
Installation	Power Wall mounted
Supply Ability	5000 Pieces per Month
Certificates	CE, RoHS, UN38.3, MSDS, ISO

Performance Characteristics



Support 15 Units in Parallel

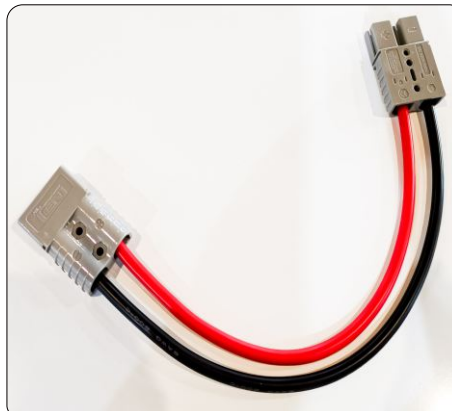
The number of parallel connections can be customized



Accessories



Bracket for Power Wall



Connectors



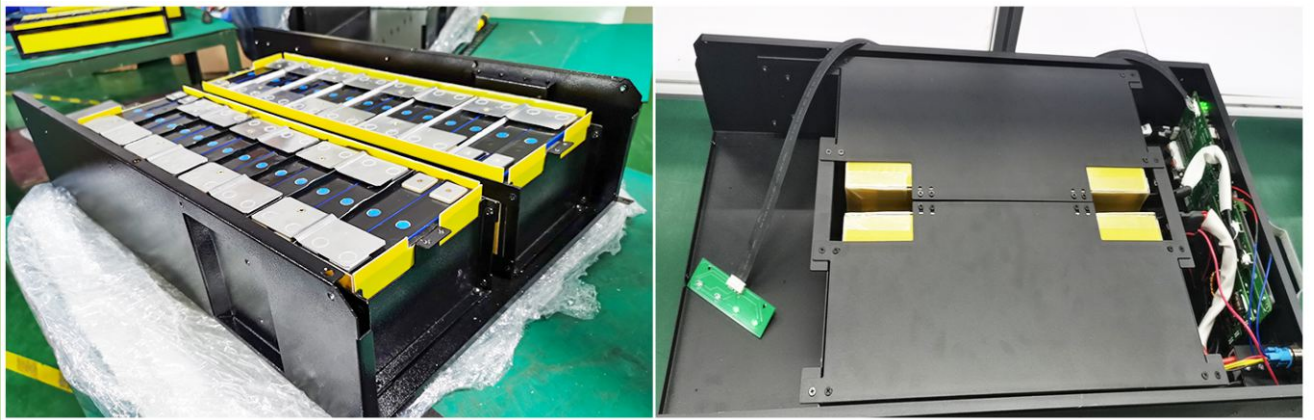
Communication Cable
(Optional)

Production Details

High Quality Battery Cell



Compact Packing



Testing Process

