

PoE AI Camera

— User Manual —



Security Expert for Your Home and Business

Table of Content

1. About the PoE AI Camera	-----01-05
2. View on Smart Phone	-----06-11
3. View on Web Browser	-----12-13
4. View on PC Software	-----13-15
5. View on Third Party Video Software	-----16-21

PoE AI Camera

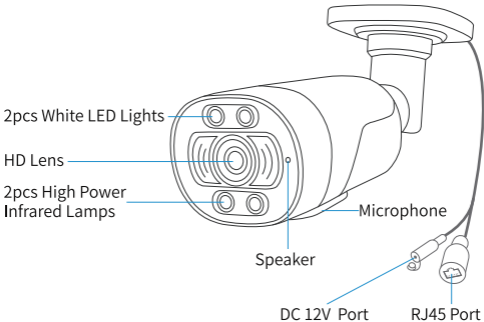
Thank you for purchasing our security PoE AI camera. We are committed to providing customers with high quality and reliable security products and solutions.

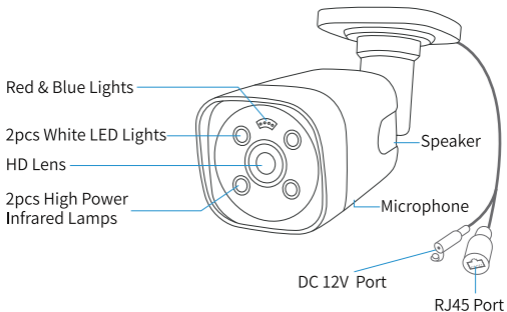
This quick user guide will help you learn fast and make it work easily. For details and latest user manual, you can download the PDF user manual on our website:

www.SecurityAICamera.com/download

01 About the PoE AI Camera

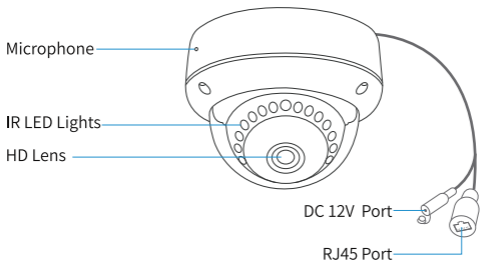
1. Bullet Camera Product Detail:



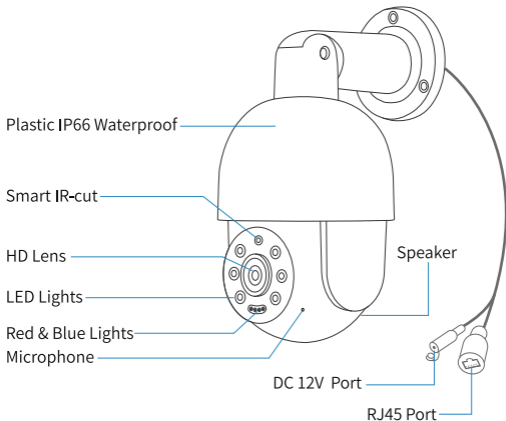


Note: Not all models of our cameras have the Red&Blue Light, it is optional.

2. Dome Camera Product Detail:



3. PTZ Camera Product Detail:



! Note: Not all models of our cameras have the Red&Blue Light, it is optional.

4. Package Include:

1 * PoE AI Camera
1 * Screws Bag
1 * User Manual

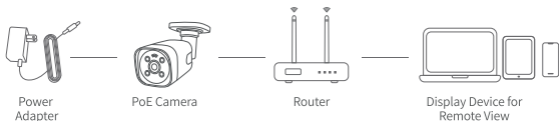
1 * Waterproof Connector
1 * Warning Sticker

This PoE camera is a smart AI camera. When human detected, the red lights and blue lights will flash alternately to scare off intruders, and flood lights will light up at night. It has a speaker, which is for two way talk and alert voice play. When human detect or alarm, it will play voice alert like: "Alert area, please leave", "Hello, welcome! " or alarm sound if this feature is turned on. (As factory defaults it is off.)

4. Connect your camera

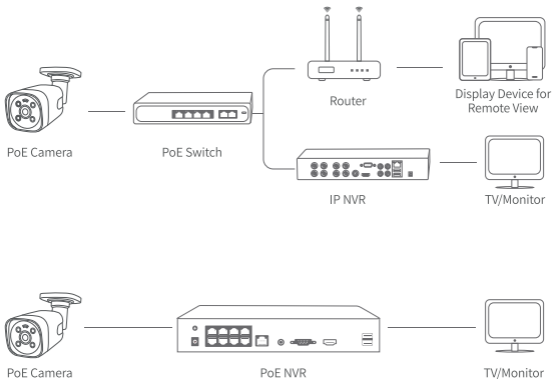
Power on the camera and connect it to internet. There are two methods to power on the PoE AI camera and connect it to internet via ethernet cable.

3.1 Connect it to the router directly and powered by power adapter.



After the connection succeed, the LED light on the cable will be blinking.

3.2 Connect it to a PoE Switch or PoE NVR.



After the connection succeed, the LED light on the cable will be blinking.

After you get the PoE camera powered and connected to the ethernet, you can view it on the smart phone(refer to chapter 02). If you can see the live video on App, you can start the installation and wiring for the camera.

Our PoE AI camera is compatible with onvif NVR. It can work with the NVR of other brands like Hikvision or Dahua which support onvif protocol. It is a good replacement camera that is more advantages than your old one.

02 View on Smart Phones

1. View on Smart Phones

1. Download and Install the [XMeye Pro](#) App



iOS

Android

2. Create an account

- 2.1 If you do not have account for XMeye Pro App, please click "Register".

- 2.2 Agree the "Service Agreement and Privacy Policy".

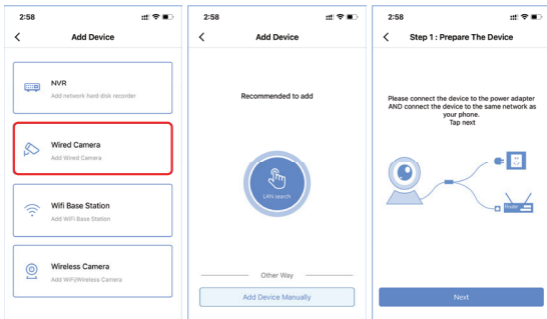
- 2.3 Enter your phone number or email address and then get code from your mobile phone.

3. Add Device

- 3.1 Click the button "+" in the top right corner of the screen and choose the "Wired Camera" connection option, then click the "LAN Search" button.

- 3.2 Before tap the "Next" step, please connect the device to the power adapter and connect the device to the same network as your phone.

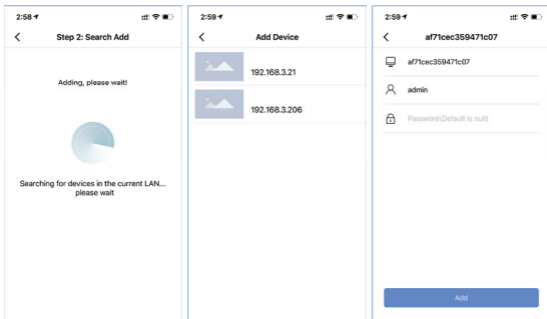
3.3 Please waiting for the App searching for devices in the current LAN.




3.4 Now please choose the camera IP address when you see in the screen.

3.5 As the camera password default is null, please click "Add" straight to the next step.

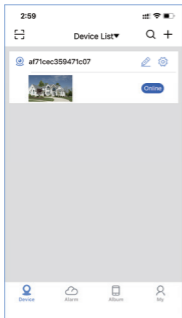
3.6 After connected, the App will let you set new password for the device, please contains 8-16 characters and must include letters and numbers.



2. Control the App

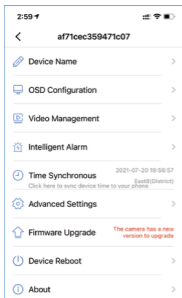
Click video image of the camera and then you can do snapshot, two-way audio and play the video recorded on the SD card. Click  to record video clips, it will count the seconds of the recorded video clips that you've recorded on your mobile phone.

You can find the pictures snapshot and the video clips you made on your phone" Could Storage".



3. Settings

In the settings, you can edit basic setting, like name of device, language, change the password, open/close the alarm push, check storage of SD card and networking settings.

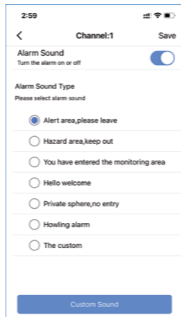
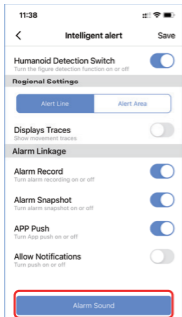


4. Unique features

Alarm Voice Alert

The camera installed AI algorithms and motion sensor, you will hear alert when any suspicious activities were detected by camera.

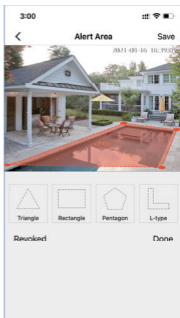
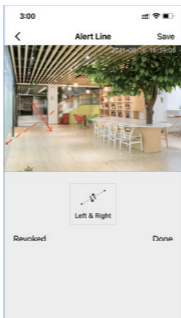
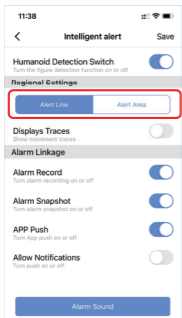
In the Intelligent Alarm, click the "Alarm Action" you can set what the camera does after alarms. You can click "Alarm Sound" to choose what prompt voice it will play after alarms. You can choose "Alert area, please leave," "Hello welcome!" As default this function is closed. Please do remember save it after.



Cordon and Alert Area

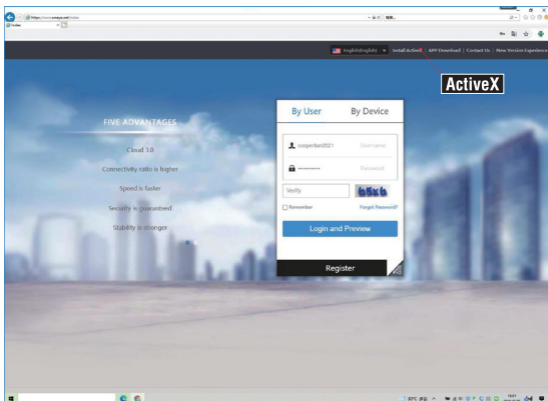
The detect area and detect shape can be multiple set. Alarm will be triggered only when both of human head and shoulder show up in camera's coverage.


There are two-ways to set the protection zones. One is cordon, the other is alert area. For the cordon, you can put a cordon in the video image and when people cross it, it will alarm. You can set different alert directions for the cordon. You can draw different shapes for the zone that you want to protect in the live video image.



03 View on Web Browser

You can also view the videos on web browser. Google Chrome is highly recommended as the one that has the best compatibility. www.xmeye.net is the web server that used for the web view. Before you can view it from web, you need to install the "ActiveX". You can find it as below.



If you have many cameras, you can manage the camera by user. If you only have one camera, we recommend you view it by device. You can find the device serial number from your App, find it on App, in "Settings" >>"About" >>"Serial Number", click to copy  it.

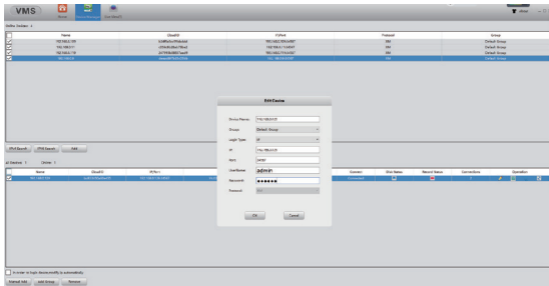



04 View on PC Software

1. View on PC Software

Step 1: Download PC software from www.SecurityAICamera.com/download. VMS for Macbook and CMS for windows PC. After opening the pc software, click "Login" directly. Do not need to input password, as default none password, just leave it blank.

Step 2: Choose Device Manager>IP4 search, then find your NVR and choose it. Click "Add".



After that click the  to edit the device, and update the password if you've already changed the password of the device.

And then back to Home page and click "Live View", double click your device IP and you can view your device in the VMS.

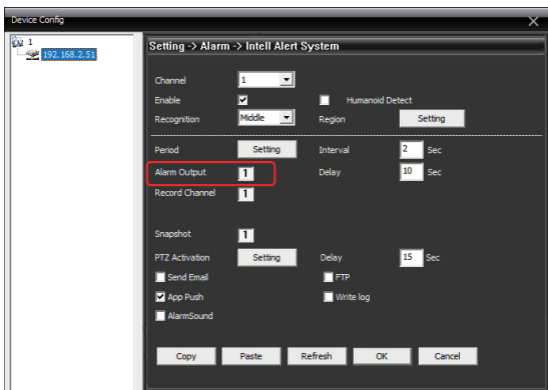


2. Unique features

Red-Blue Light Alarm (Optional)

Some models of our PoE AI Cameras are built in 2 pcs red LED lights and 2 pcs blue LED lights. When human detected, the red lights and blue lights will flash alternately to scare off intruders whether day or night.

If you want to disable the function Red-Blue Light Alarm on PC Software, please click the right mouse button to enter the setting interface, then click Setting>>Alarm>>Intelligent Alert, cancel the option "Alarm Output".

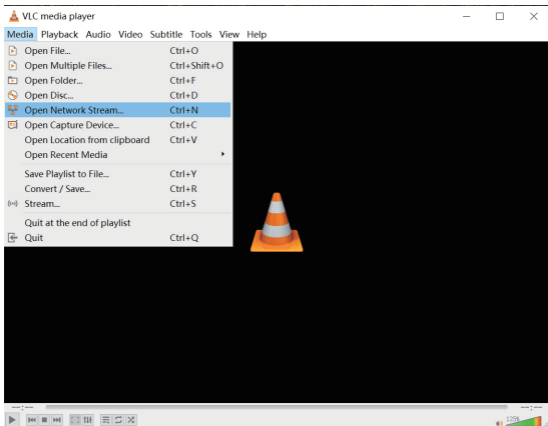


05 View on Third Party Video Software

This PoE camera is of onvif protocol and support RTSP monitoring. It is compatible with some popular third party video monitoring software, which mainly using RTSP and working with Onvif protocol. Here are some of the popular softwares as below.

1. View on VLC

Open your VLC media player. Click "Media" >> "Open Network Stream" Then enter the RTSP network URL of the camera in the WLAN.



RTSP Data as below:

rtsp://192.168.1.10:554/user=admin&password=
&channel=1&stream=0.sdp?

"192.168.1.10" : this is the IP of the camera, you can find and modify it in the "DeviceManage" software.

(Download it in on our website :

www.SecurityAICamera.com/download)

":554": this is the RTSP server port , you can change it in the network service.

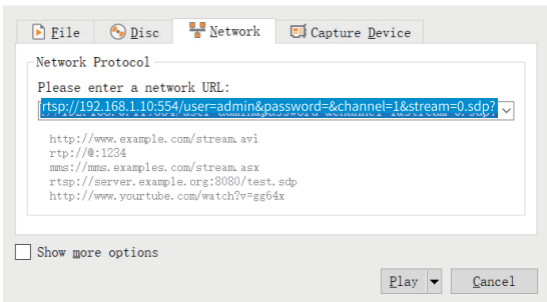
"user=admin" : this is the user name for your camera, as default it is "admin"

"password=" : this is the password for your camera, as default it is none. If you changed it, please update it.

"Channel=1" : it means the first channel. If it is only for one camera it is "1".

"stream=0.sdp?" : it means the main video stream.

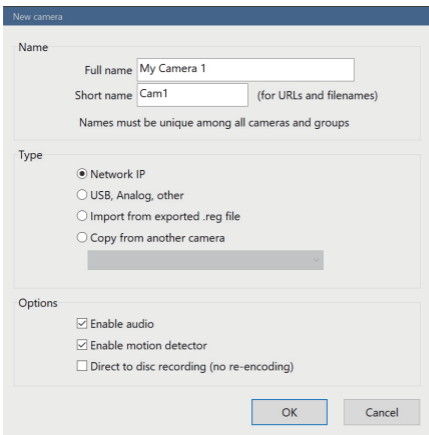
 Open Media — □ ×



2. View on Blue Iris

2.1 Open your Blue Iris 5 software, click menu >> "Add new camera".

Then you follow picture below and "Enable audio" if your camera is with audio.

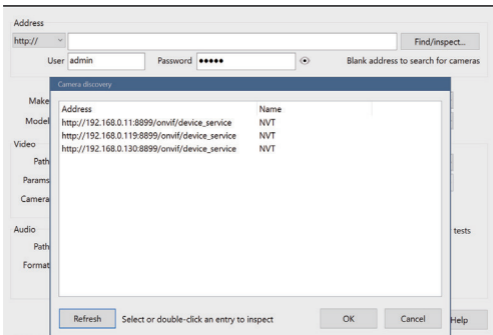


The screenshot shows a dialog box titled "New camera" with three main sections: "Name", "Type", and "Options".

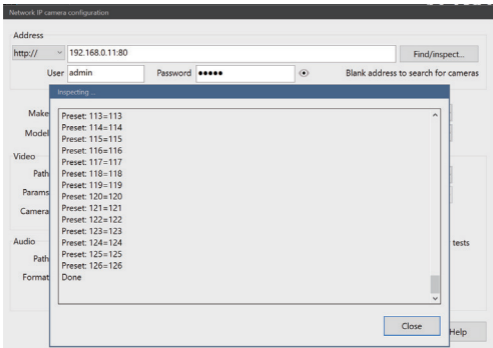
- Name:** Contains two text input fields. The "Full name" field is filled with "My Camera 1". The "Short name" field is filled with "Cam1". To the right of the "Short name" field is the text "(for URLs and filenames)". Below these fields is the instruction "Names must be unique among all cameras and groups".
- Type:** Contains four radio button options:
 - Network IP
 - USB, Analog, other
 - Import from exported .reg file
 - Copy from another cameraBelow the radio buttons is a greyed-out dropdown menu.
- Options:** Contains three checkbox options:
 - Enable audio
 - Enable motion detector
 - Direct to disc recording (no re-encoding)

At the bottom of the dialog box are two buttons: "OK" and "Cancel".

2.2 Click "Find/inspect" and choose the IP or the IP camera you want to add . Click "OK".



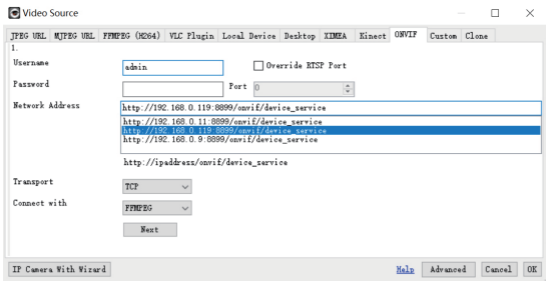
2.3 Click "Close ", then Click "OK" to add the camera.
camera is with audio.



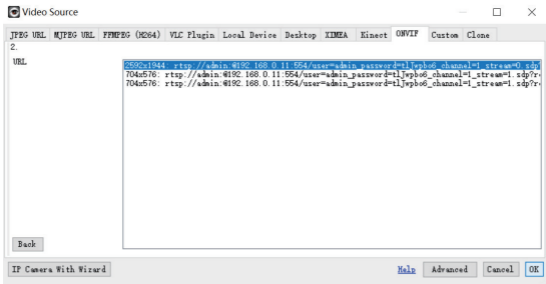
3. View on iSpy

3.1 Open your iSpy software, click "Add" and choose the "ONVIF Camera".

Input your camera "Username" and "Password", select the IP address of your camera, click "Next".



3.2 Choose your camera RTSP(Main Stream), then Click "OK".



3.3 Then you go to camera option and you can name the IP camera, input your camera IP address, User name and Password, click "Finish" to finish the add. If you have an audio camera, please click the "listen" icon to start listening.

Camera (ID: 1, DIR: CMHLV)

Camera Motion Detection Alerts Recording PTZ Images FTP Cloud Storage Scheduling Storage

Video Source

Source ... Adv. Properties Inputs Options

Resize

Name AI Cam

Groups [Help](#)

Camera Active Fill

Transform Rotate None Flip None

Timestamp FPS: {FPS} {0:G} ...

Mask Image ...

Picture In Picture ...

Maximum Framerate 10.00 When Recording 10.00

Microphone

Microphone ... Camera 0 mic [Help](#)

Ignore Audio

Talk

Camera Model None [Settings](#)

IP Address Port 80

Username Password

Exit this to enable alerts and recording [Copy To](#) [Help](#) [Back](#) [Next](#) [Finish](#)

This PoE AI camera has some features and settings which not listed in the manual. You can reach our website to learn more about it.