



Thermographic Inspection at

Our Clients Office

Nov-19

By

Hope Electrical



Hope Electrical

07786432916 www.hope-electrical.co.uk

Thermography Inspection at
Our Clients



Inspection Site information	
Customer	Our Client
Address	Home / Office
Contact	Owner
Email	stuart@hope-electrical.co.uk
Thermographer	Stuart Hope

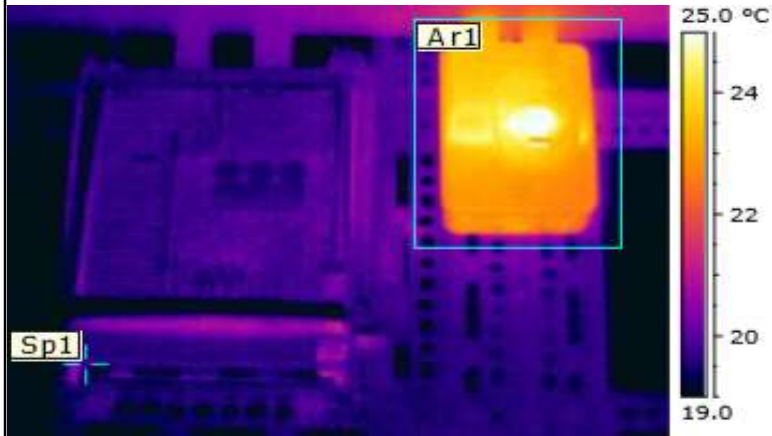
Hope Electrical

07786432916 www.hope-electrical.co.uk

Summary of inspection			
Location	Equipment	Fault	Page
Switch room	Fused switches		2
Income room	Main fuses		2
Plant room	Contactor		1
Electric Cuboard	Distribution board		3
Plant room	Change over switch		2
Switch room	Distribution board		2
Income room	Main terninals		2
Switch room	Fused switches		2
Electric Cuboard	Fused switches		2
Mains area	Main income		2
Mains room	Incomming supply		2
Switch room	Sub main		2



Location	Plant room
Equipment	Fused switch
Type	Fuses
fault	2
Recommendation	Upgrade



Analysis:

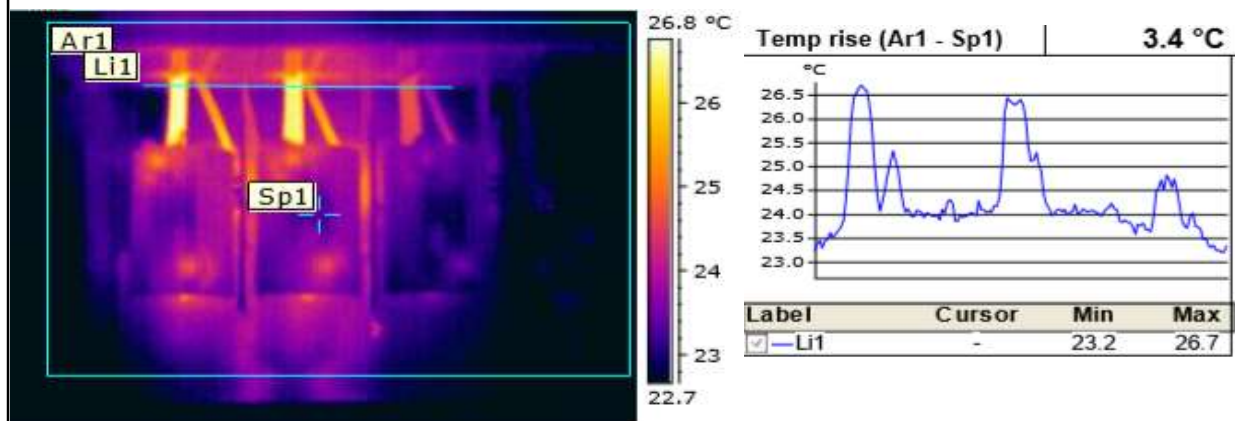
Fused switch running hot in comparison

Recommendation:

Loading and circuit design to be checked



Location	Income room
Equipment	Main fuses
Type	Fuses
fault	2
Recommendation	Check balance



Analysis:

This image and graph shows an imbalanced supply

Recommendation:

Check loadings and balance where possible.



Location	Plant room
Equipment	Contactors
Type	Oil filled
fault	1
Recommendation	Monitor



Analysis:

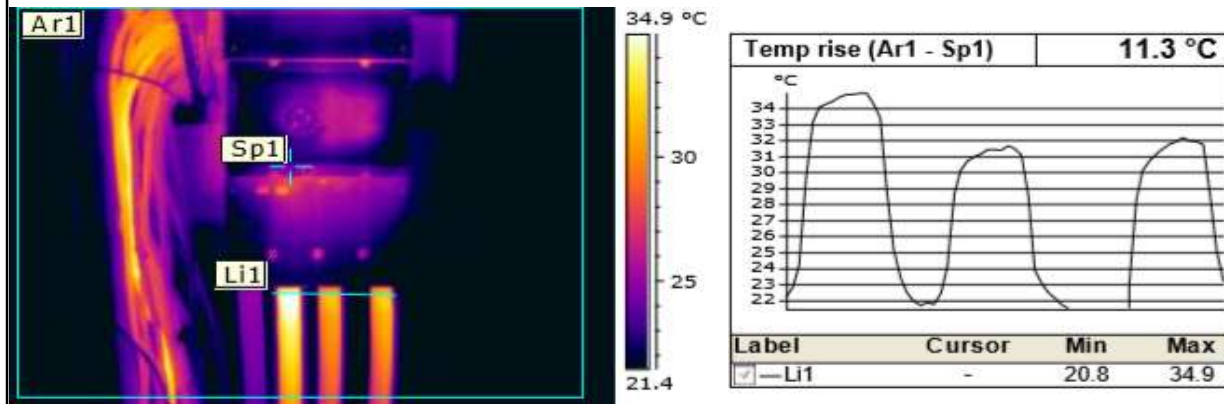
Oil filled contactor running hot possible cause low oil level or poor contacts.

Recommendation:

Check oil level and contacts.



Location	Electric Cupboard
Equipment	Distribution board
Type	Neutral bar
fault	3
Recommendation	Replace



Analysis:

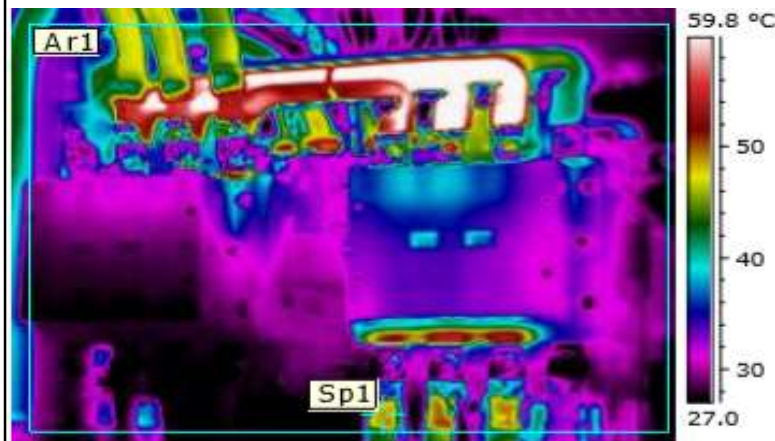
The melted neutral bar has been caused by all neutrals on one side of the bar also red phase is running hot which is not visible to the eye.

Recommendation:

Balance loads and replace neutral bar



Location	Electric Cupboard
Equipment	Distribution board
Type	Neutral bar
fault	3
Recommendation	Replace



Analysis:

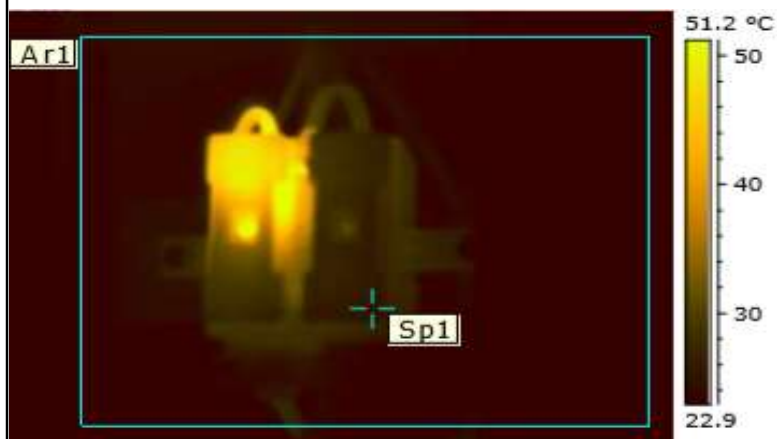
View of top changeover contactor running hot on red & yellow phases.

Recommendation:

Check connections and circuit design.



Location	Switch room
Equipment	Distribution board
Type	Fuses
fault	2
Recommendation	Replace



Analysis:

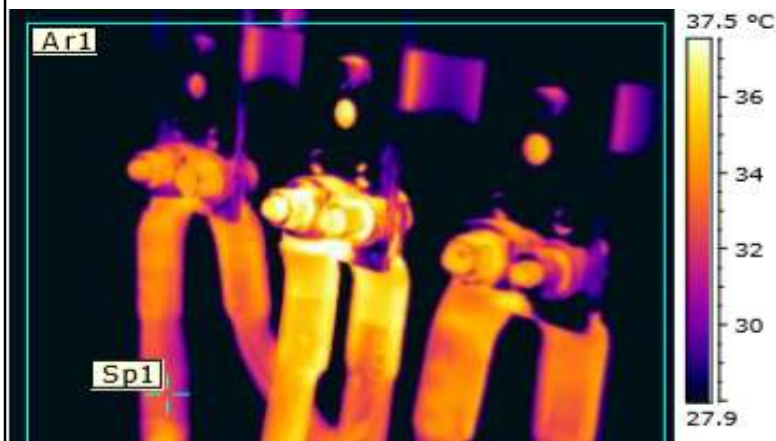
Top part of fuse holder and cable running hot which points to a poor connect

Recommendation:

Check and re-terminate connection.



Location	Income room
Equipment	Main terminals
Type	Income room
fault	2
Recommendation	Inform board



Analysis:

L2 phase running hot possible poor connection

Recommendation:

Re-terminate at next available shutdown.



Location	Income room
Equipment	Main terminals
Type	Income room
fault	2
Recommendation	Inform board



Analysis:

Switch front running hot, this is being heated from connections / fuses inside.

Recommendation:

Requires internal visual investigation.



Location	Income room
Equipment	Main terminals
Type	Income room
fault	2
Recommendation	Inform board



Analysis:

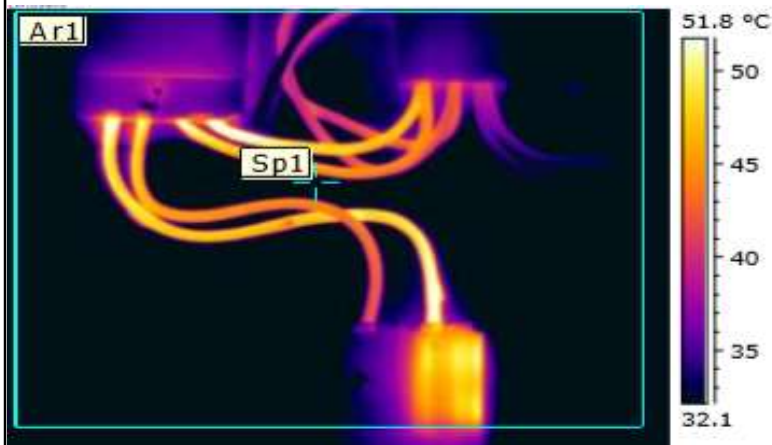
Fuse holder running hot due to poor connection.

Recommendation:

Re-terminate and check for damage / Replace



Location	Income room
Equipment	Main terminals
Type	Income room
fault	2
Recommendation	Inform board



Analysis:

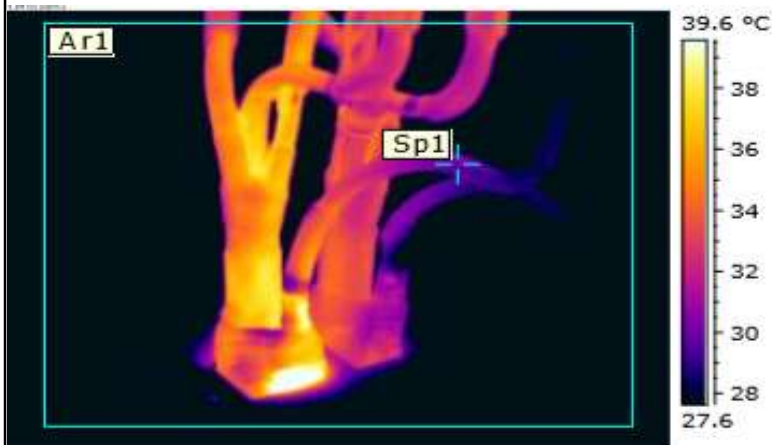
Fuse holder running hot due to loading which can be seen at meter and service connector. Phase cable at meter has a poor connection due to being under stress caused by being too short.

Recommendation:

Check maximum demand and resize supply as required.



Location	Mains room
Equipment	Incoming supply
Type	Supply cable
fault	2
Recommendation	Investigate

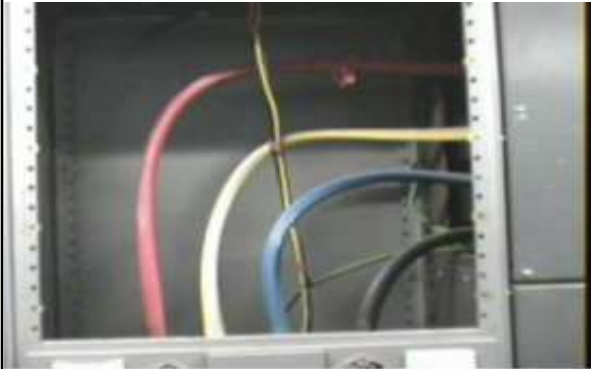


Analysis:

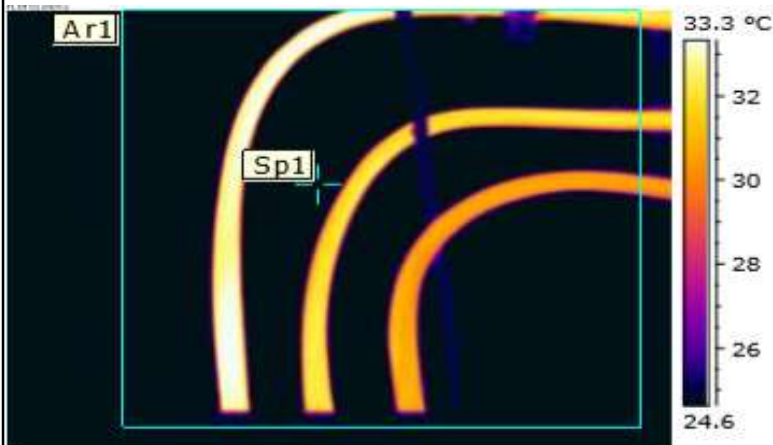
Image shows dual supply cables with one cable running hotter in comparison

Recommendation:

To be investigated



Location	Switch room
Equipment	Sub main
Type	Tails
fault	2
Recommendation	Investigate



Analysis:

Supply running out of balance.

Recommendation:

Balance where possible.