



SURFACESTUDIO

YOUR VISION, YOUR SURFACE

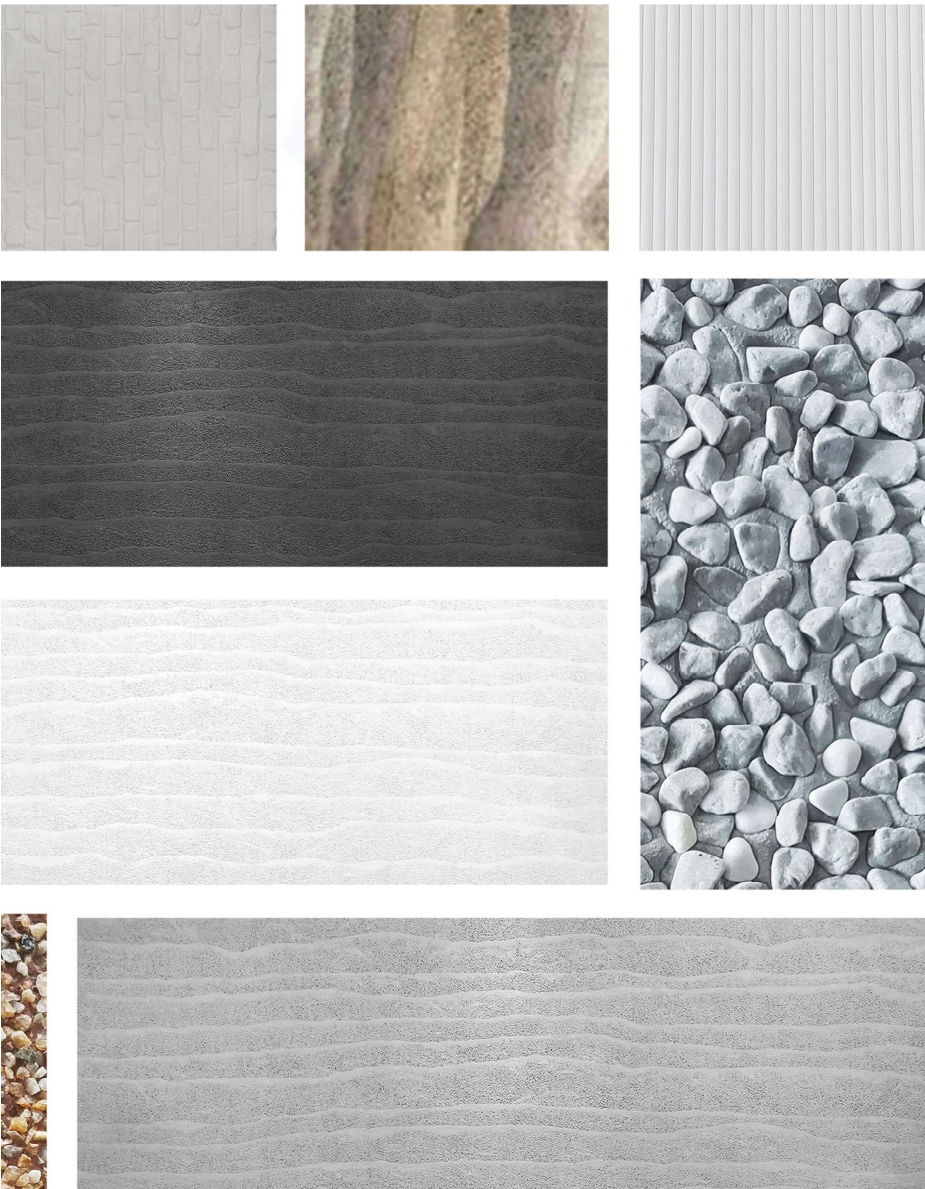
Art Cement Casting Board

New Decorative Material

Content

Introduction
Color Display
Installation
Case Study





Introduction

By the traditional cement, sand, stone and environmental additives, combined with the new production process. As a new type of environmental protection material, exquisite texture, flame retardant, waterproof, good decorative performance, simple and quick installation advantages, greatly shorten the installation period, while saving cost, not only can be used outdoors, but also by many excellent designers in the indoor, to create a natural space.

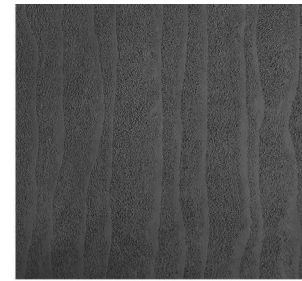
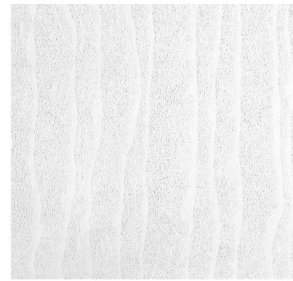
Introduction

Raw materials: Cement, sand, stone and environmental additives

Product technology: New production technology manufacturing

Application space: Suitable for indoor and outdoor

Features: Fine texture, flame retardant and waterproof, good decorative performance, strong durability and weather resistant. Convenient construction

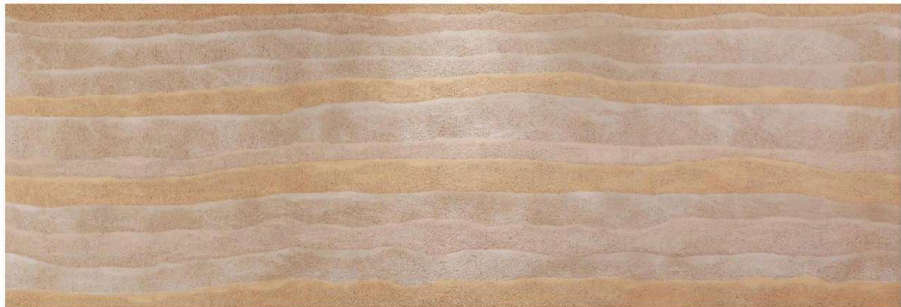


Color Display

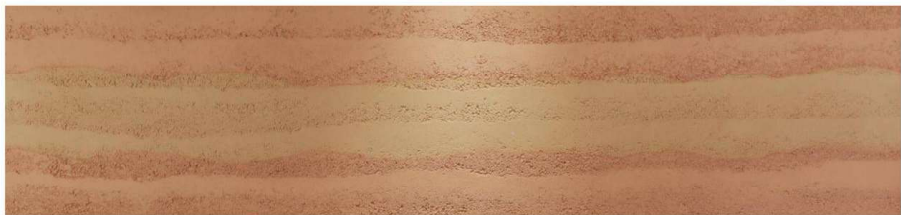
Thin TRA1 - Gradient 570*2400mm



Thin TRA2- Gradient 960*22800mm



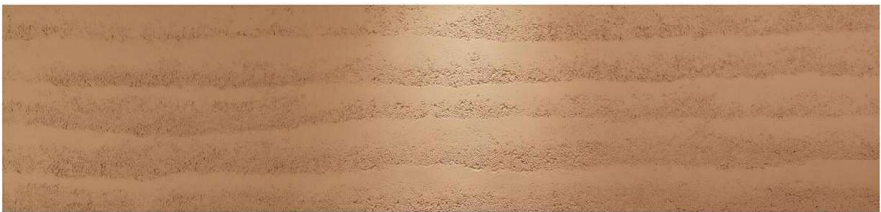
Thin TRB1- Gradient 570*2400mm



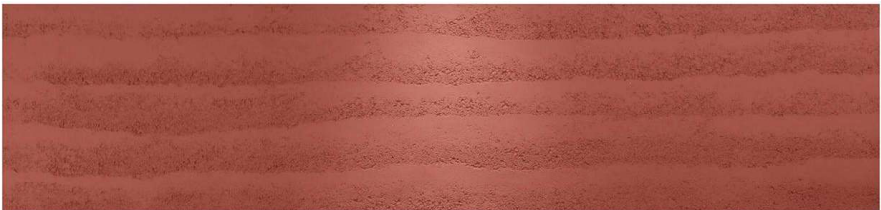
Thin TRB2- Black 570*2400mm



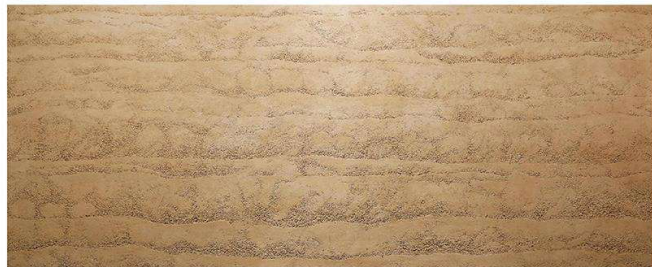
Thin TRC1- Earth yellow 570*2400mm



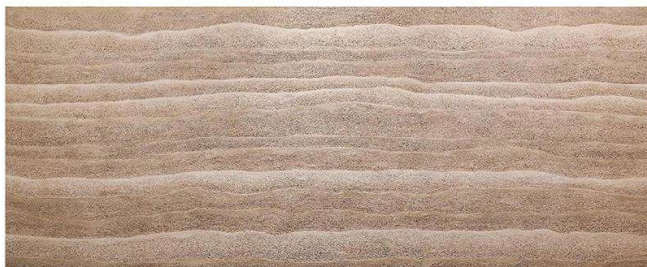
Thin TRD1- Red 570*2400mm



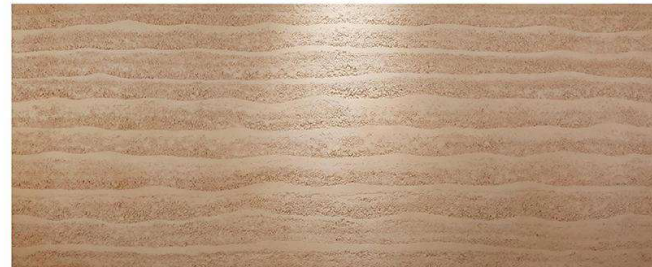
Rammed earth - AYA7 1220*3000mm



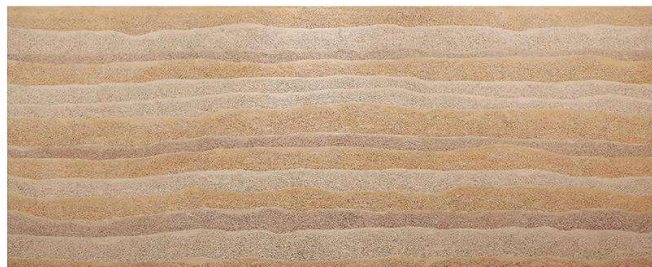
Rammed earth - AYB8 1220*3000mm



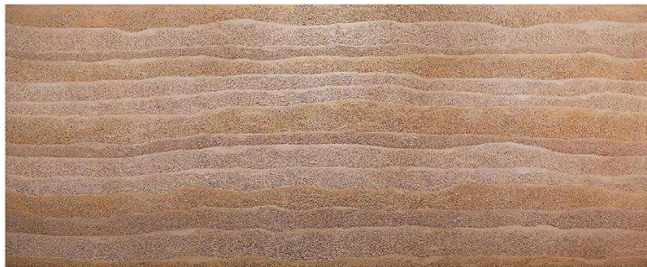
Rammed earth - BYA10 1240*3000mm



Rammed earth - AYA8 1220*3000mm



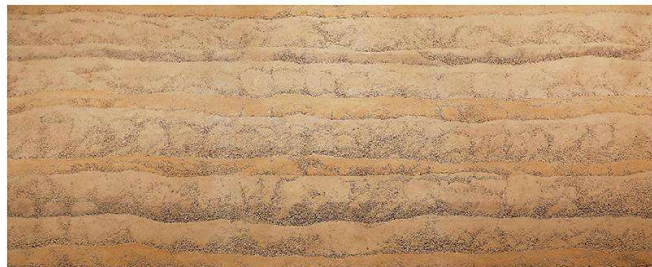
Rammed earth - AYC8 1220*3000mm



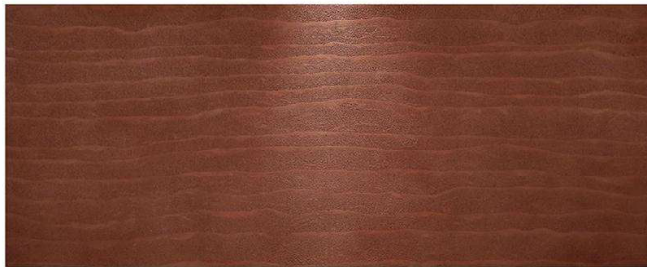
Rammed earth - BYA18 1220*3000mm



Rammed earth - AYB7 1220*3000mm



Rammed earth - AYE8 1220*3000mm



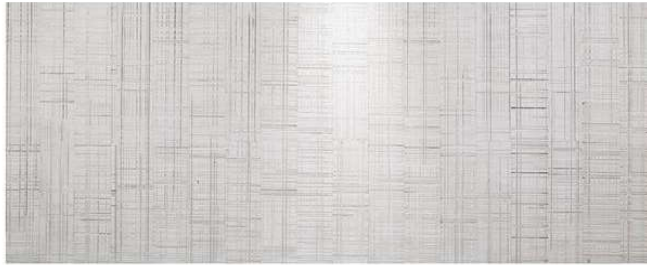
Rammed earth - BYB18 1220*3000mm



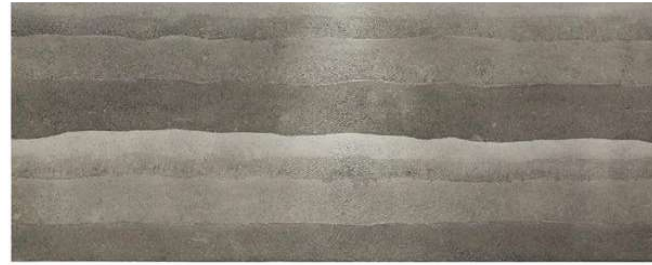
Rammed earth - BYA2 1220*3000mm



White sawn- CYB4 1260*3250mm



Rammed earth - BYA2 1220*3000mm



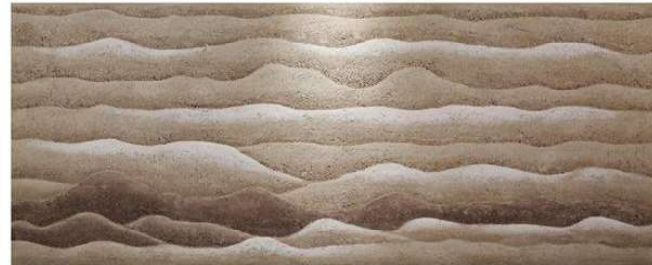
Rammed earth - BYA3 1220*3000mm



Grey sawwood -CYC4 1260*3250mm



Rammed earth - BYA3 1220*3000mm



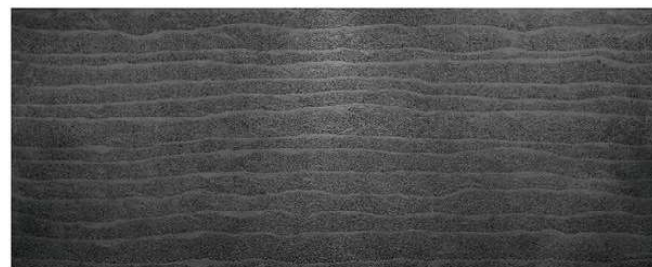
Black rammed earth -AYM8 1220*3000mm



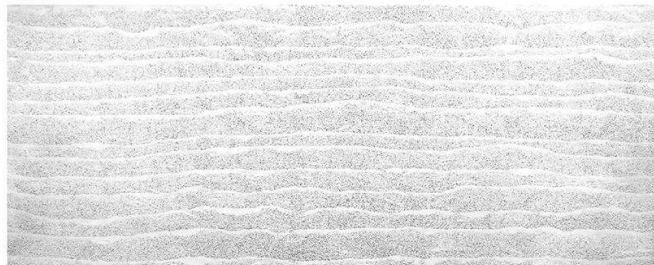
Black sawwood -CYA4 1260*3250mm



Black rammed earth -AYM8 1220*3000mm



White rammed Earth -AYN8 1220*3000mm



Rammed earth plate - BYD10 1240*3000mm



Black brick -BYA6 1260*3260mm



Grey rammed earth -AYP8 1220*3000mm



Weathered washed
stone -AYC25
1200*3000mm



Weathered washed
stone -AYD25
1220*3000mm



White brick -BYB6 1260*3260mm



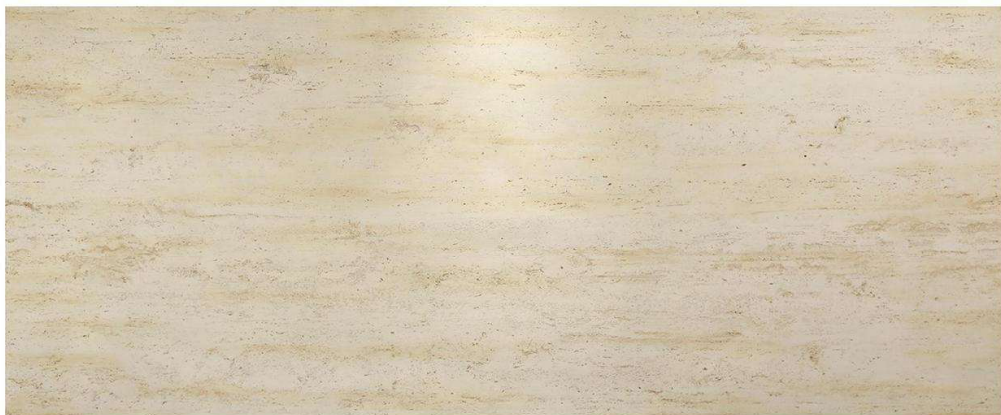
Straw rammed earth board -ARA9 1000*3000mm



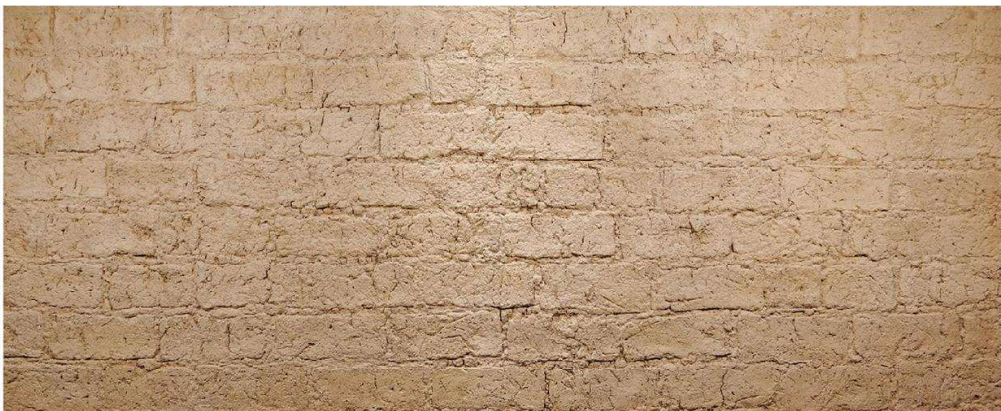
Cement - AYA24 1280*3250mm



Transected trevite -BYA15 1190*2880mm



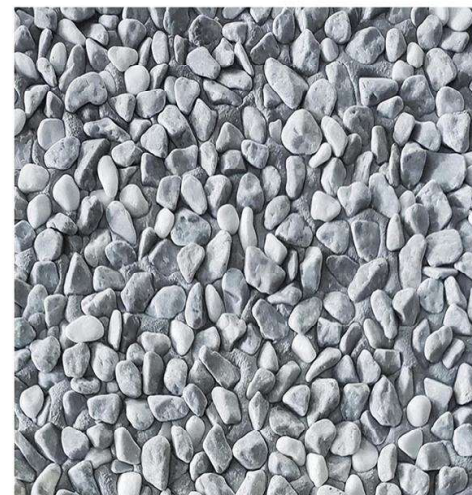
Adobe - AYA21 1220*3000mm



Bamboo - AYA20 1240*2970mm



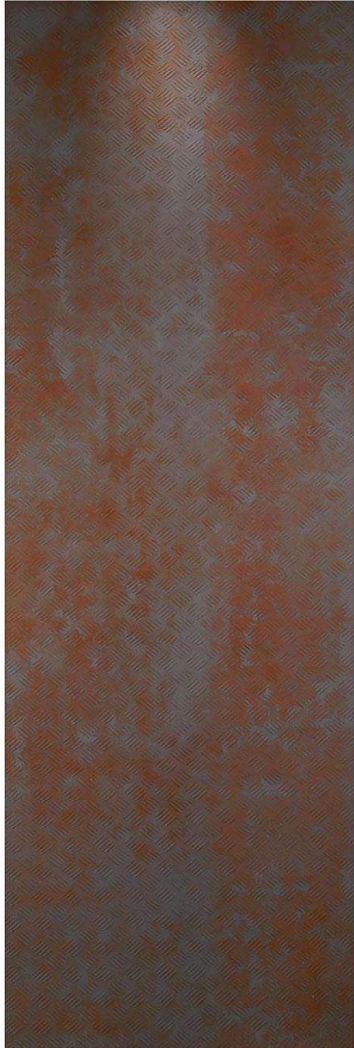
Washed stone - AYA25 1200*3000mm



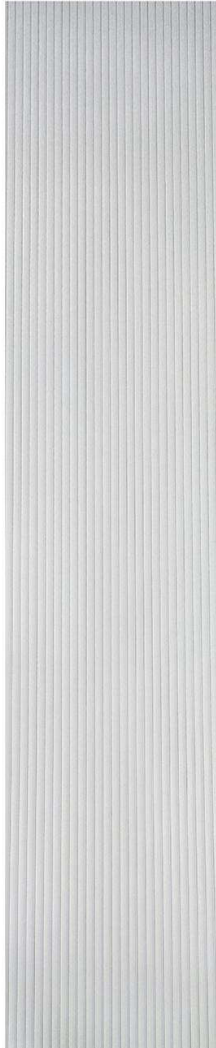
Washed stone - AYB25 1200*3000mm



Rust - ARB17
1200*3000mm



Cement line -BYA5
600*3000mm



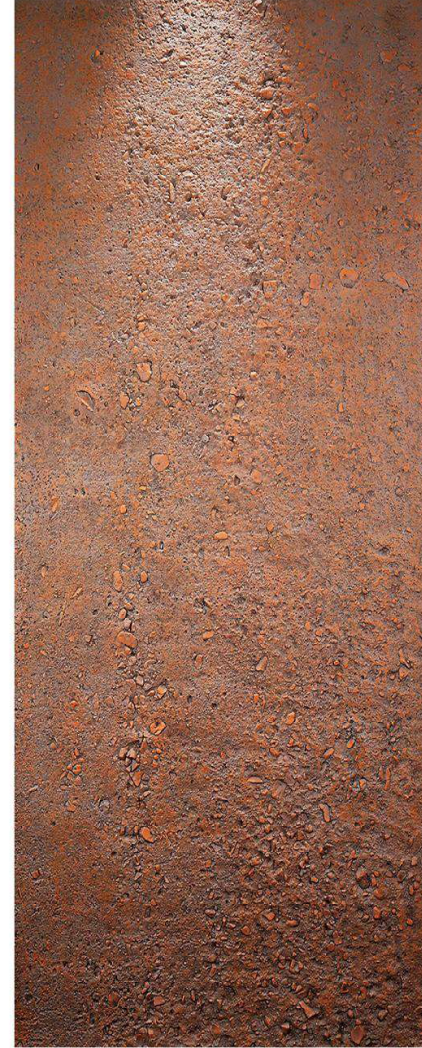
White rock - AYD22
1220*3200mm



Weathered water stone
- Grey -BYB12
590*2990mm



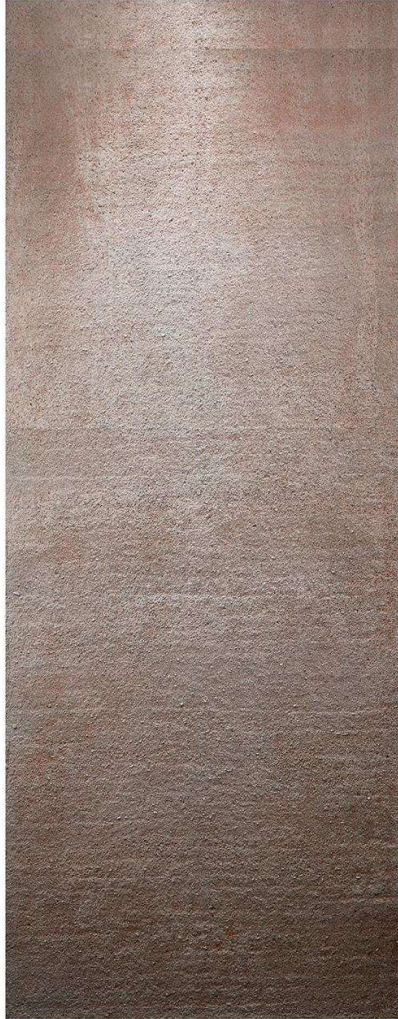
Rammed earth old wall -AYA3
1220*3000mm



Weathered water stone -
white -BYA12
590*2990mm



Rammed Earth old wall -AYA5
1230*3000mm



Rammed Earth old wall -AYA3
1220*3000mm



Rammed Earth old wall -AYA4
1230*3000mm



Rammed Earth old wall -AYA6
1230*3000mm



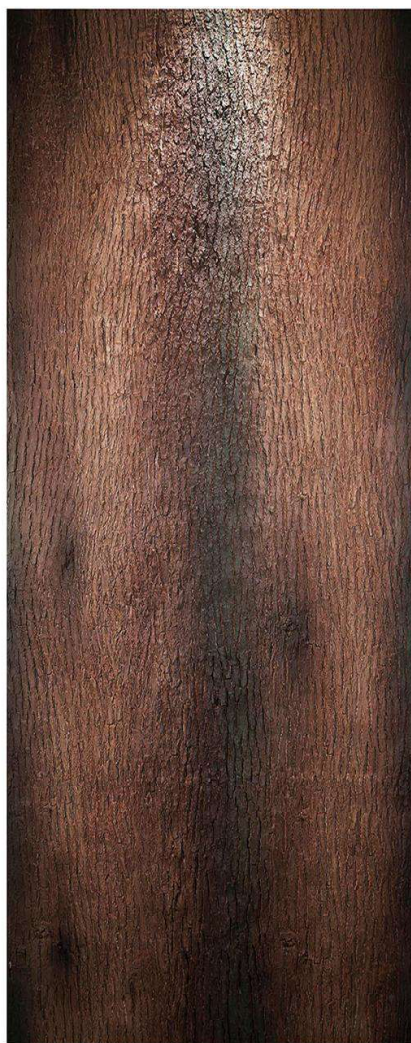
Black rock - AYA22
1220*3200mm



Grey rocks - AYB22
1220*3200mm



Old tree bark - AYA1
1220*3000mm



Elm wood - AYA2
1220*3000mm



Cement - ARA12
1170*2950mm



Cement - ARA13
1170*3000mm



Cement - ARA10
1170*3000mm



Cement - ARA11
1170*3000mm



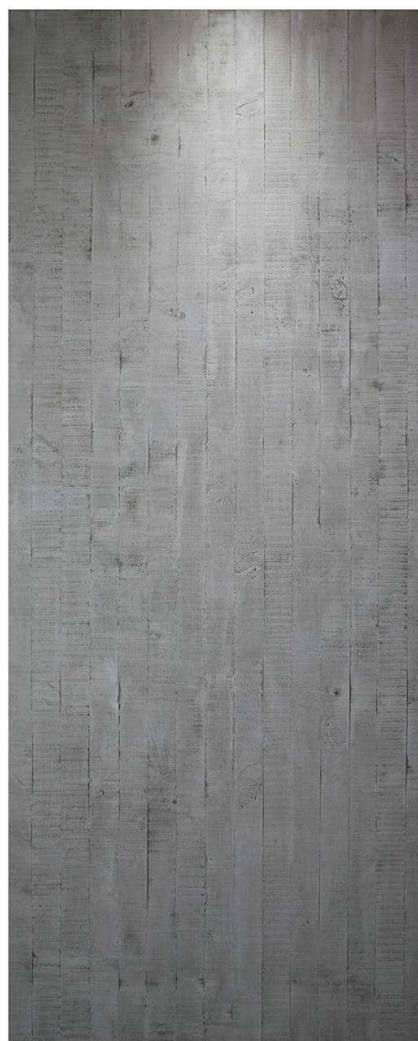
Cement - BYA1
1220*3000mm



Cement - BYB1
1220*3000mm



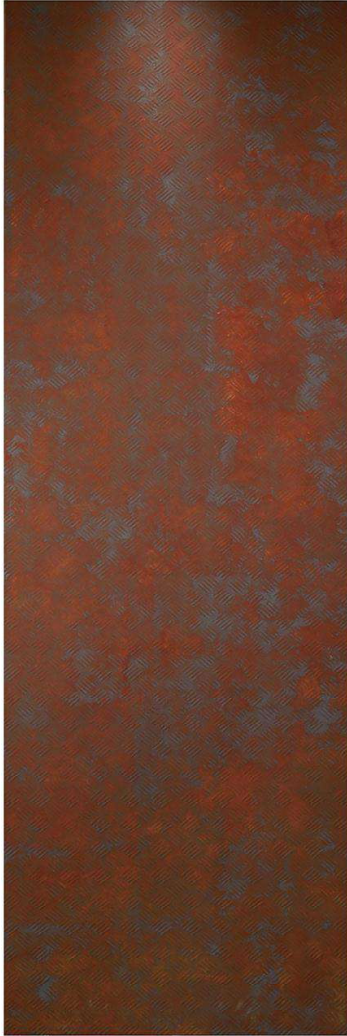
Cement - AYB23
1220*3000mm



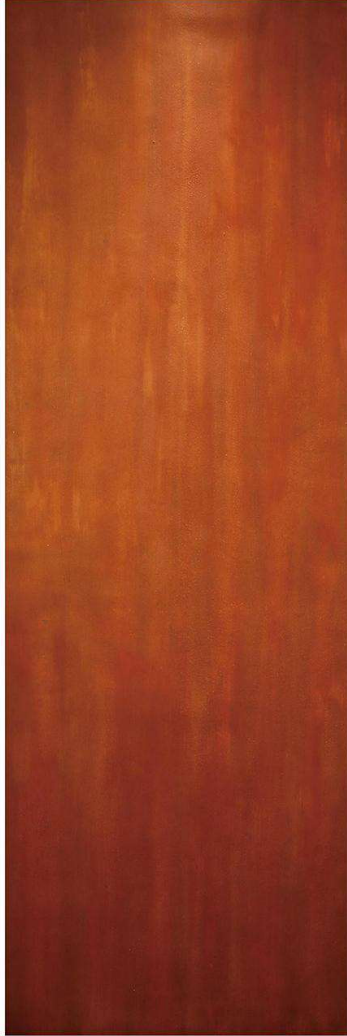
Cement - AYD10
1170*3000mm



Rust - TRA17
1000*3000mm



Rust - TRA19
1000*3000mm



Cement - BYC1
1220*3000mm



Cement - ARA13
1170*3000mm



Lunar surface cement-BYA4
1220*3000mm



Methods of hole in the stone-
BYA16 1190*2880mm



Sand rock - CRA1
1200*3300mm



Moon stone - CRA2
1200*3260mm



Installation

The best installation scheme is straight row nail mounting with structural adhesive. The outer wall of the building adopts the form of dry hanging, and the landscape wall adopts the form of dry hanging or sticking.

A - Adhesive form:

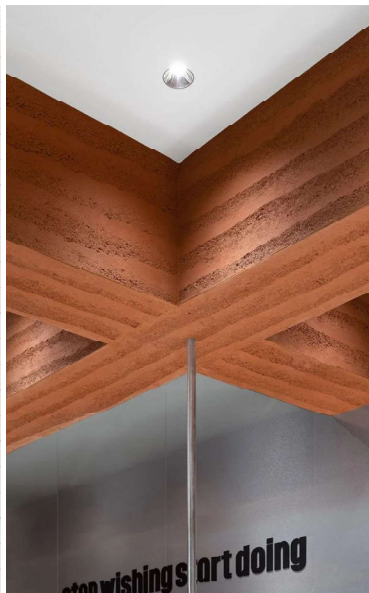
Base leveling → blockboard bottom → rammed earth plate reverse sizing, structural adhesive (nail-free adhesive) from the edge of rammed earth plate 15cm, dot shape, point spacing of 10~15cm, paste → details processing → complete.

Note: plasterboard cannot be used as the base of the inner wall, because there is paper surface on the surface of the plaster board resulting in unstable adhesion. During the installation, ensure that the base surface and sizing surface of rammed earth board are dust free.

B - Dry hanging form:

1. Ordinary dry hanging: Fix the 2cm*4cm keel on the indoor foundation wall, keeping the distance between the center of the wooden keel is 30cm. Place the rammed earth plate horizontally and fix it on the surface of the plate where there are many honeycomb holes with straight row nails.

2. Reinforce dry hanging: Install the woodworking board on the outside of the common wooden keel. Apply a layer of liquid glue on the surface of the woodworking board then place the rammed earth board horizontally and fix it on the surface of the board where there are many honeycomb holes with straight rows of nails.



Rammed Earth

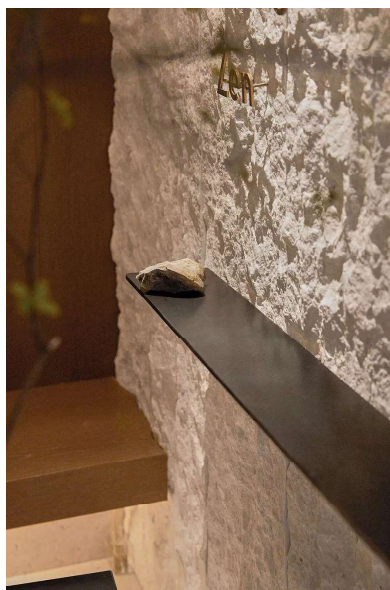
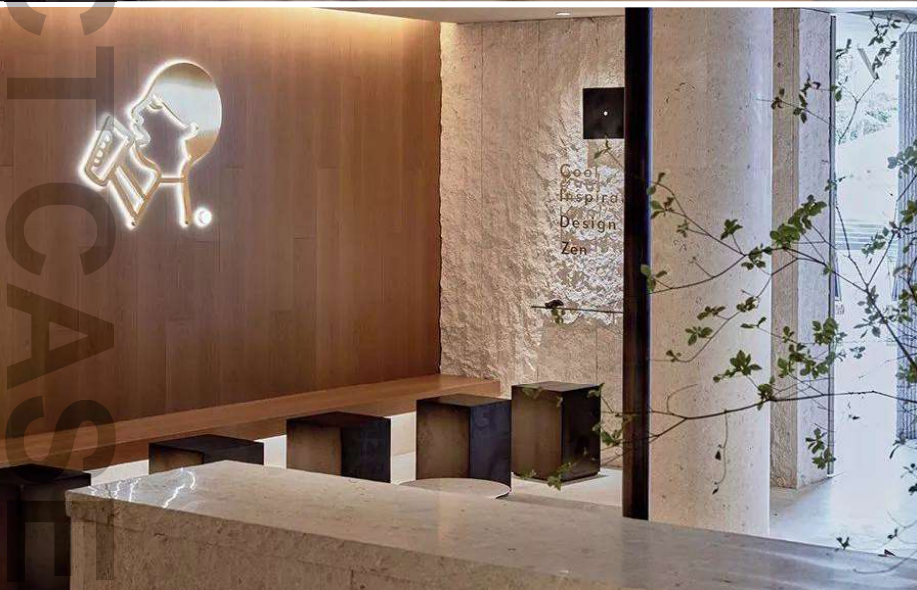
The rough and original sand texture of rammed earth, combined with metal, produces different sparks, forming unique space characteristics





Star M Stone

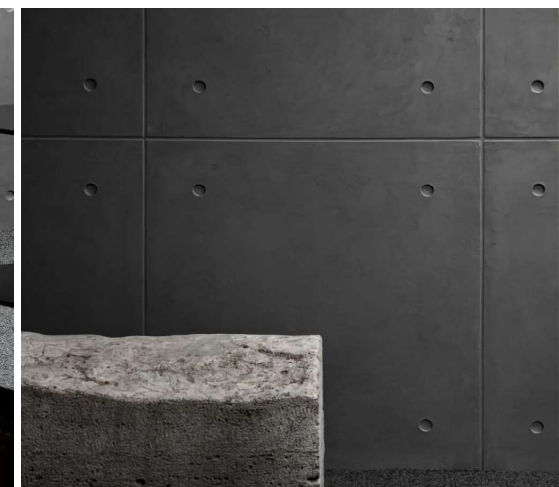
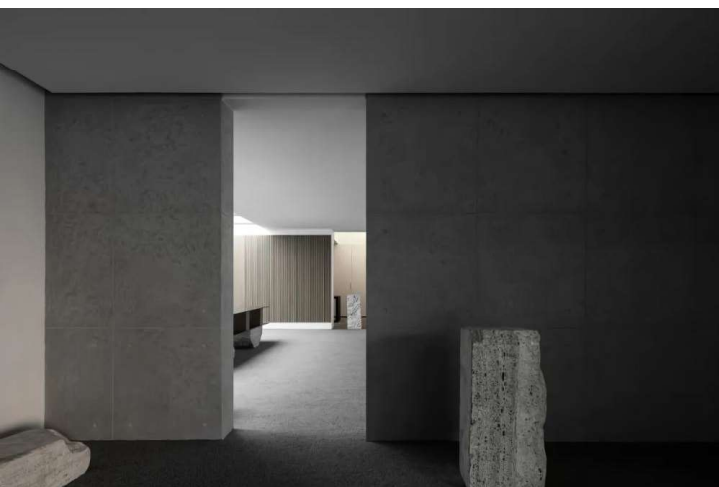
Adopting cement to imitate natural stone which brings the effect of staying in valley; sometimes smooth and sometimes like the wave layers vanishing on the beach.



PRODUCT CASE

Qing Cement
Industrial wind is the way to go





Ando Shimizu Board

Water Style Fashion Texture – Environmental Protection Technology

