



SURFACESTUDIO

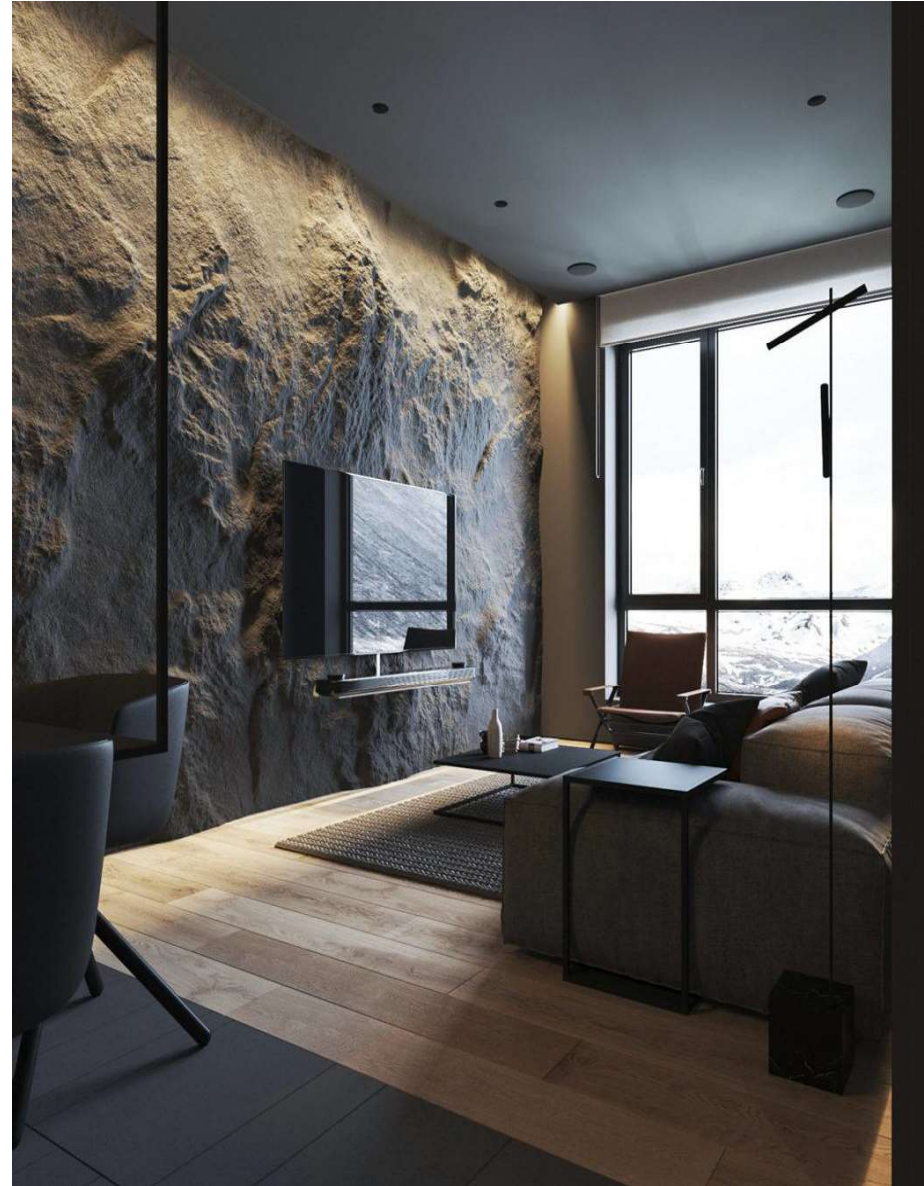
YOUR VISION, YOUR SURFACE

FRP Concrete Cast Slabs

New Decorative Material

Content

Introduction
Color Display
Installation
Case Study



Introduction



FRP and cement are two kinds of materials:

FRP is composed of glass fiber, resin, stone powder and other composite materials, through rubbing, mold opening, sizing, molding, coloring, forming and other processes, to form a highly creative decorative performance effect. FRP products features include increased toughness compared to cement products, and can do 45° radian

Cement products are heavier than FRP material, have a better rigidity, however a lower toughness.

Product Types: Bamboo, Pleated, Fused Rock, Cast Slab, Clear Grain Stone, Sansheng Stone, Qingtian Stone

Surface Treatment: Oil Paint, Water Paint

Fire Rating: Cement Class A, Resin Class B

Application space: Commercial, Exhibitions, Public Outdoor. Indoor (Wall & Ceiling), Outdoor.

Color Display

Bamboo



FRP Concrete slab -- Bamboo (black)
600*3200*(3-10)mm



FRP cement slab -- Bamboo (Earth yellow)
600*3200*(3-10)mm



FRP Concrete Slab -- Bamboo (white)
600*3200*(3-10)mm

Qingtian Stone #1



FRP Cement slab -- Qingtianshi No. 1 (Black)
440*2310*(3-8)mm



FRP Cement slab -- Qingtianshi No. 1 (Huang)
440*2310*(3-8)mm

Color Display

Qingtian Stone #2



FRP Cement slab -- Qingtianshi No. 2 (White)
580*2340*(3-8)mm



FRP Cement slab -- Qingtianshi No. 2 (Black)
580*2340*(3-8)mm



FRP Cement slab -- Qingtianshi No. 2 (Tuhuang)
580*2340*(3-8)mm

Qingtian Stone #3



FRP Cement slab -- Qingtianshi No. 3 (White)
590*2370*(3-8)mm



FRP Cement slab -- Qingtianshi No. 3 (Black)
590*2370*(3-8)mm



FRP Cement slab -- No. 3 Qingtianshi (Tuhuang)
590*2370*(3-8)mm

Color Display

Qingtian Stone #4



FRP Cement slab -- Qingtianshi No.4 (White)
770*2340*(3-8)mm



FRP Cement slab -- Qingtianshi No.4 (Tuhuang)
770*2340*(3-8)mm



FRP Cement slab -- Qingtianshi No. 4 (Black)
770*2340*(3-8)mm

Color Display

Qingtian Stone #5



FRP Concrete slab -- Qingtianshi No.5 (White)
390*2390*(3-8)mm



FRP Cement slab -- Qingtianshi No. 5 (Black)
390*2390*(3-8)mm



FRP Cement slab -- Qingtianshi No.5 (Tuhuang)
390*2390*(3-8)mm

Qingtian Stone #6



FRP Concrete slab -- Qingtianshi No.6 (White)
770*2310*(3-8)mm



FRP Cement slab -- Qingtianshi No.6 (Black)
770*2310*(3-8)mm



FRP Cement slab -- Qingtianshi No.6 (Tuhuang)
770*2310*(3-8)mm

Color Display

Concrete



FRP concrete slab -- Slab (White)
1200*3200*(3-5)mm



FRP Concrete slab -- Slab (Ash)
1200*3200*(3-5)mm



FRP cement slab -- Slab (Yellow)
1200*3200*(3-5)mm

Color Display

Crumples



FRP Concrete slab -- Pleated (black)
1000*3000*(3-6)mm



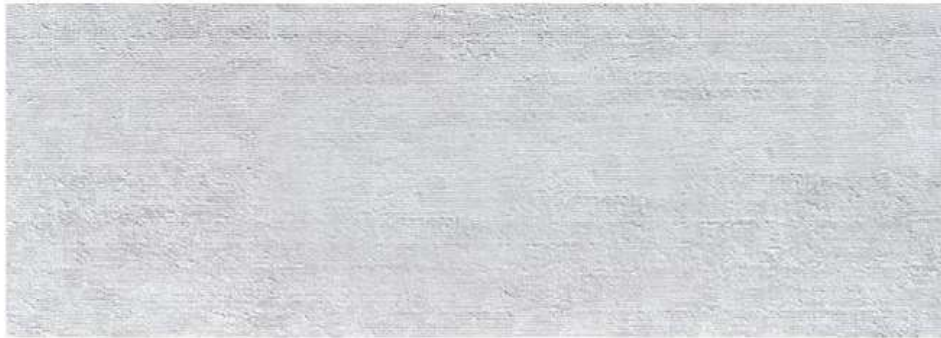
FRP Concrete slab -- Pleated (silver grey)
1000*3000*(3-6)mm



FRP concrete slab -- Pleated (earth yellow)
1000*3000*(3-6)mm

Color Display

Lines



FRP Cement Slab -- Slow-grained stone (white)
1200*3200*(3-8)mm



FRP Cement slab -- Slow-grained stone (ash)
1200*3200*(3-8)mm



FRP cement slab -- Slow-grained stone (Earth yellow)
1200*3200*(3-8)mm

Color Display

Rock Veneer



FRP Cement slab -- Fluvial rock (white)
1300*3000*(5-60)mm



FRP Cement slab -- Fluvial rock (ash)
1300*3000*(5-60)mm



FRP Cement slab -- Fluvial rock (black)
1300*3000*(5-60)mm



FRP cement slab -- Fluvial rock (Earth yellow)
1300*3000*(5-60)mm

Color Display

Grained Stone



FRP Cement slab -- Raw stone (White)
1200*3200*(3-40)mm



FRP Cement slab -- Raw stone (black)
1200*3200*(3-40)mm

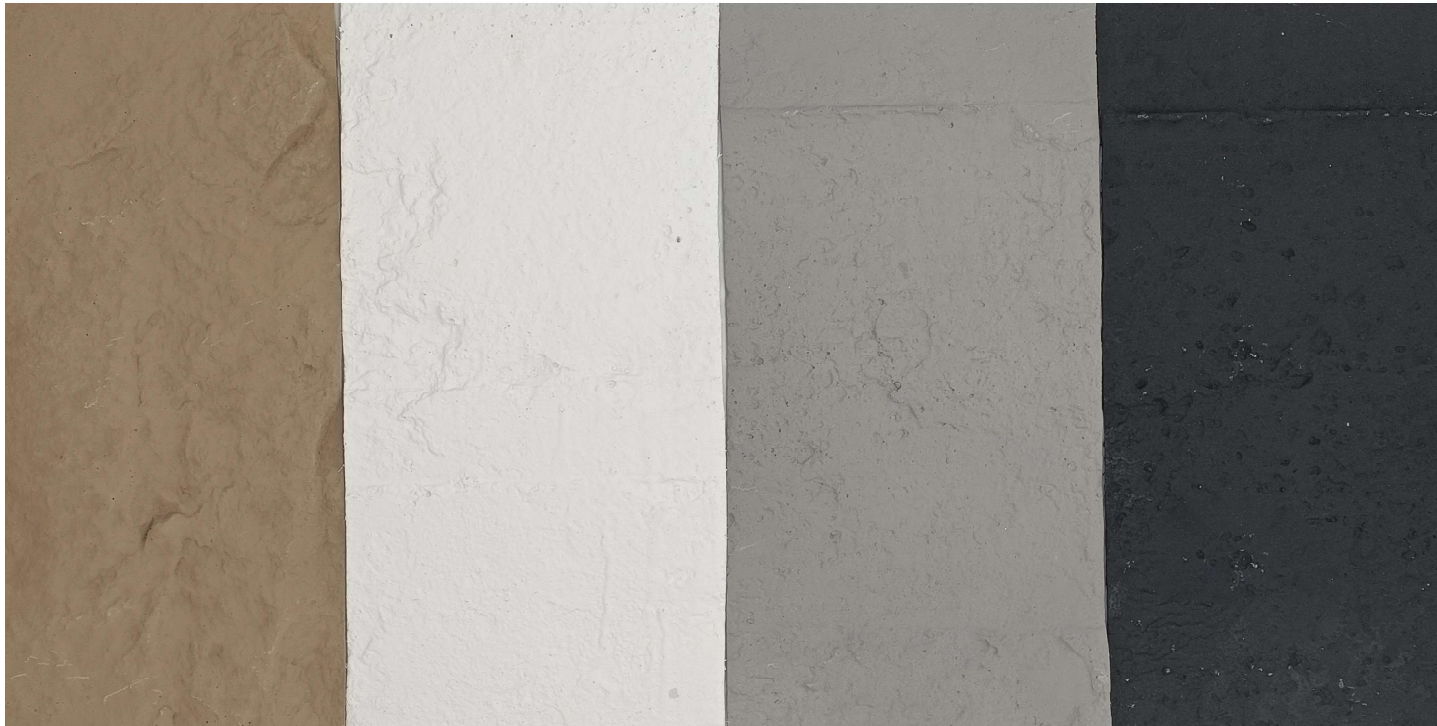


FRP Cement slab -- Raw stone (Ash)
1200*3200*(3-40)mm



FRP cement slab -- Raw stone (Earth yellow)
1200*3200*(3-40)mm

FRP Cement Slab - Color Options



yellow

white

gray

black

Installation

Preparation tools:

Toothless saw
Structural Adhesive
FRP cement decorative board
Level
Box ruler
Repair agent
Color paste

Step 1: Check the product for any damages

Step 2: Cut on the back side using the toothless saw (or Tile cutting saw) so as not to damage the surface color

Step 3: To repair, first fill the gap with the repair agent, wait to dry, then apply the color paste

Step 4: Ensure the surface is flat and levelled. Plan out your installation dimensions. Structural adhesive paste can be directly applied to the cement wall

Notes:

1. FRP material can do 45° arcs
2. DO not use Plasterboard for interior walls. Since the surface of plasterboard is paper, the product will not stick firmly.

Case Study

