



**SURFACESTUDIO**

YOUR VISION, YOUR SURFACE

# L Series PU Decoration Board

---

New Decorative Material

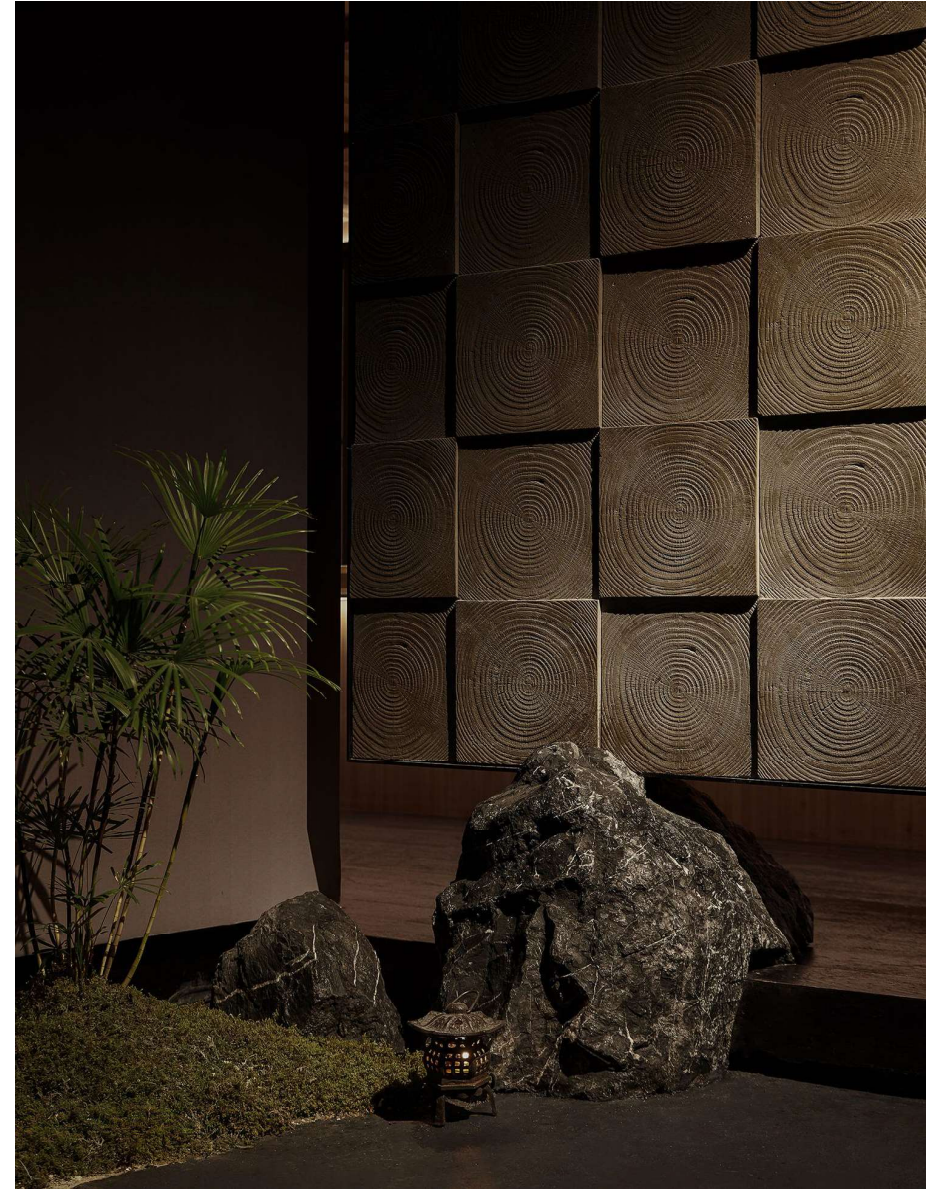
## Content

Introduction

Color Display

Installation

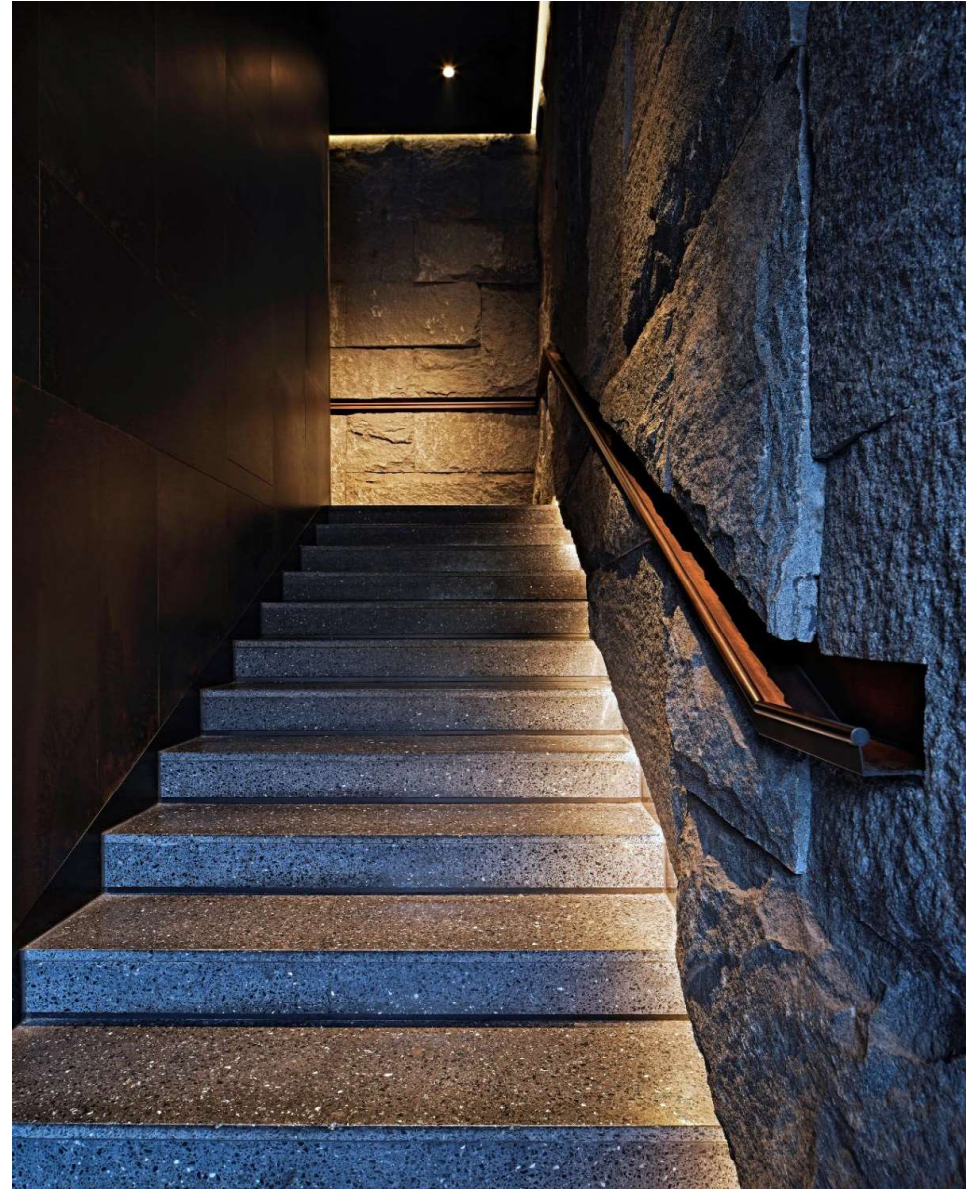
Case Study



# Introduction

---

PU (polyurethane) is a kind of polymer material, known as the "fifth plastic" for its excellent performance. PU decorative panel is made of a kind of high-density polyurethane new material. The texture of PU is similar to the material it mimics to produce an effect of pure nature. The product has good insulation, can be properly bent, and is widely used for indoor and outdoor applications.



# Introduction

---

**Product Name:** L series PU board

**Raw material:** Polyurethane + light clay

**Size:** A variety of specifications and styles

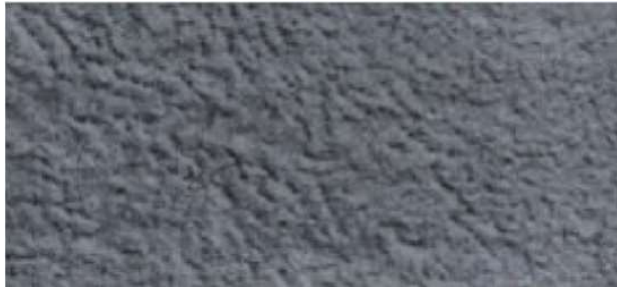
**Features:** Light weight, fine texture, good heat preservation performance, good decoration performance, waterproof, easy installation

**Application space:** Outdoor building façade & indoor application such as wall decoration, column, background wall, partition, bar decoration, etc..

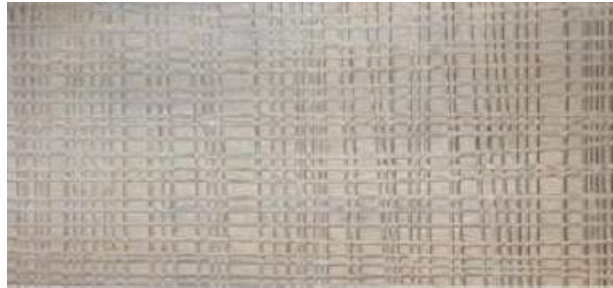


## Color Display

---



BLS1 - Pineapple Stone



GWM1 - Plaid Wood



SPH1 - Black Pile



JXS1 - Arrow Stone  
Auckland Ash / Rhine Yellow



JZT1 - Pyramid  
Rhine Yellow / Victoria White

## Color Display

---



Sheet Metal - Bronze Red  
2400\*800mm



Sheet Metal - Bronze Gold  
2400\*800mm



WP1 - Tile

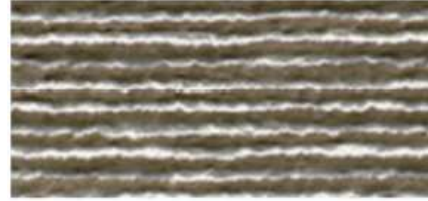
LSH1/2 - Waterflow Stone



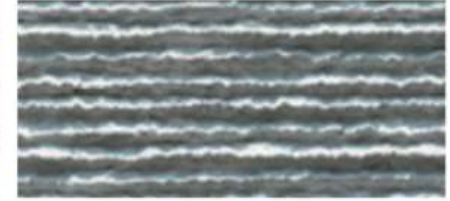
White



Black



Yellow



Grey

# Color Display

---



LSHJ  
Waterflow  
Stone  
Angle



SYS2 - Mountain Rock  
White



SYS2 - Mountain Rock  
Black

## Formwork Wood Series



Antique Black - 1200\*300mm



Antique Ash - 1200\*300mm



Antique Orange - 1200\*300mm



Antique Coffee - 1200\*300mm

# Color Display

---

## MGH - Mushroom Stone Series



Single Ash



Golden Hemp



Hemp



Roman Black



Golden Hemp  
600\*600mm

# Color Display

---

## MFS - Rubiks Cube Series



White



Three Yellow



Rhine Yellow



Three Ashes



Cube Corner

# Color Display

---

SNB2 - Cement Board Series

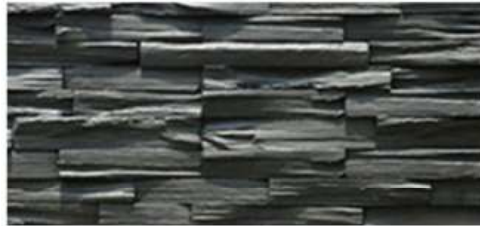


White



Ash

MUS - Wood Grain Stone Series



Black



Yellow



Ash



Corner

# Color Display

---

## NLM - Tree Ring Wood Series



Antique Ash



Antique Orange



Antique Coffee

## SJDS - Triangle Hole Stone Series



Victoria White



Rhine Stone



Black

---

# Color Display

---

SHS - Corallite Series



Three Black



Three Yellow



Three Ash



Three Calories

XXXXX



Gold Hemp



Roman Black



Light Grey



Dark Grey

# Color Display

---

SYS3 - Rock Stone



Brazil Black

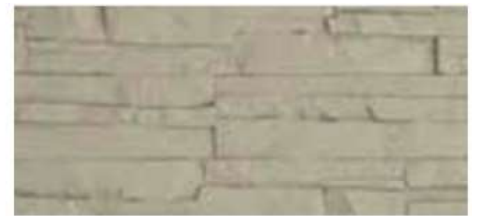


Sahara Yellow

SMS1 - Terazzo Series



Oakland Ash



Rhine Yellow



Tarzan Ash



Corner



Roman Black

# Color Display

---

TBYS - Rattan Art Stone Series



Auckland Ash



Rhine Yellow

WJZ1 - Cultural Brick Series



Elegant Orange



Nostalgia Red



Light Grey



Victoria White

# Color Display

---

XY51 - Rocklet Series



White



Black



Yellow



Ash



XQSP - Tilted Pile



YGLM - England Wood

# Color Display

---

## XSH - Rust Stone Series



Oackland Ash



White



Rhine Yellow



Roman Black



Desert Yellow



Corner

## Featherstone Series



# Color Display

---

CCS - Great Wall Series



Desert Yellow

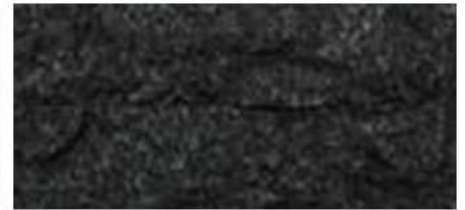


Mount Tai Ash

Long Stone Series



White



Black



English Yellow



Corner



Ash

# Color Display

---

## SPBL - Page Rock Series



White



Rhine Yellow



Light Ash

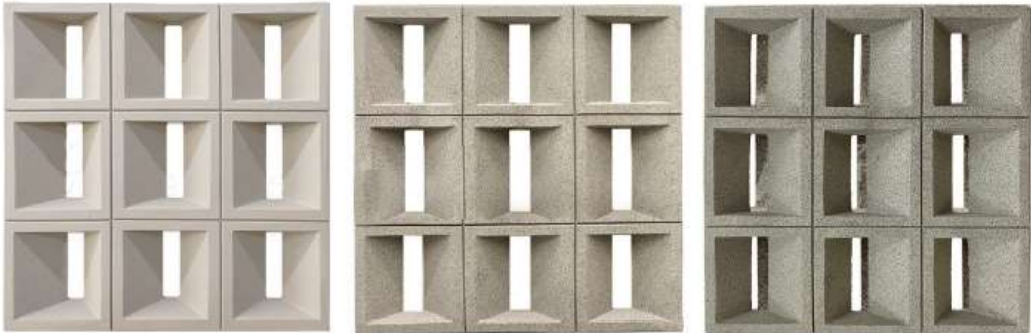


Roman Black

# Color Display

---

JGT1 - T Nine Series



Auckland Grey

Light Grey Hemp

Dark Grey Hemp

JGY1 - Circle Nine Series



Agate Red

Dark Grey Hemp

JGD1 - Overlayed



Auckland Grey

JGPT - Sealed Nine



Auckland Grey

NSH1 - 3 Holes Nine



Auckland Grey

JGS1 - Triangle Nine



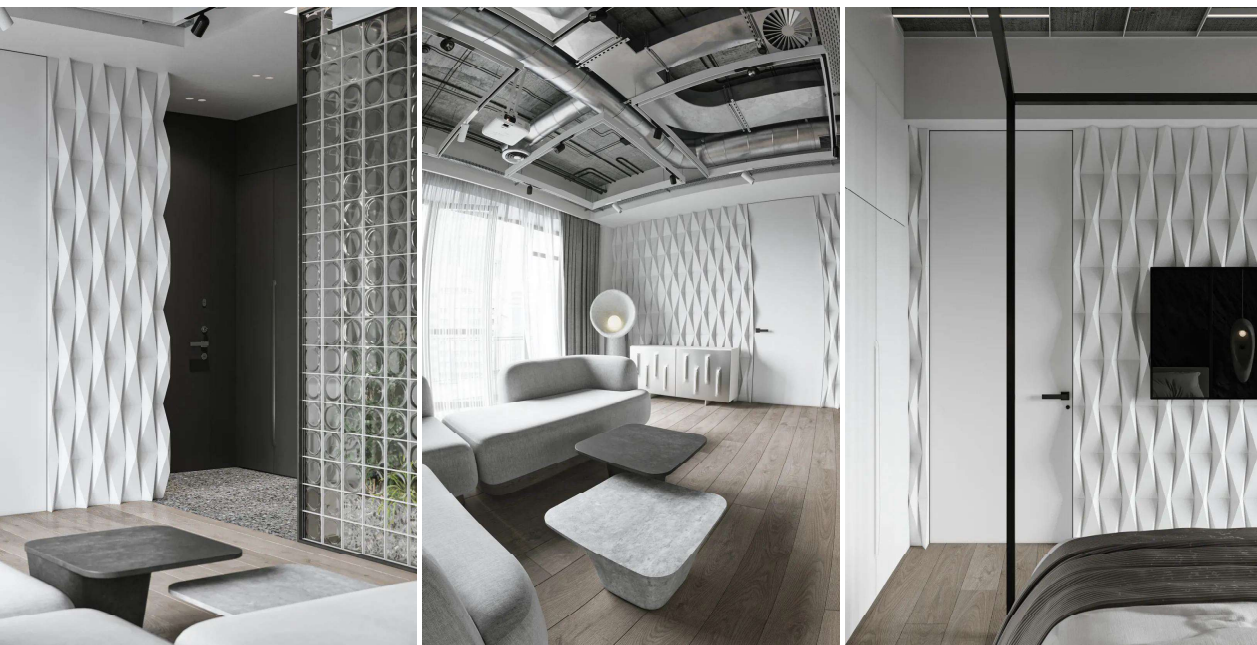
Agate Red

## Installation

---

1. Determine the position and place ensuring that everything is level
2. The stone is fixed on the flat wall with screws
3. Splice from bottom to top, from left to right

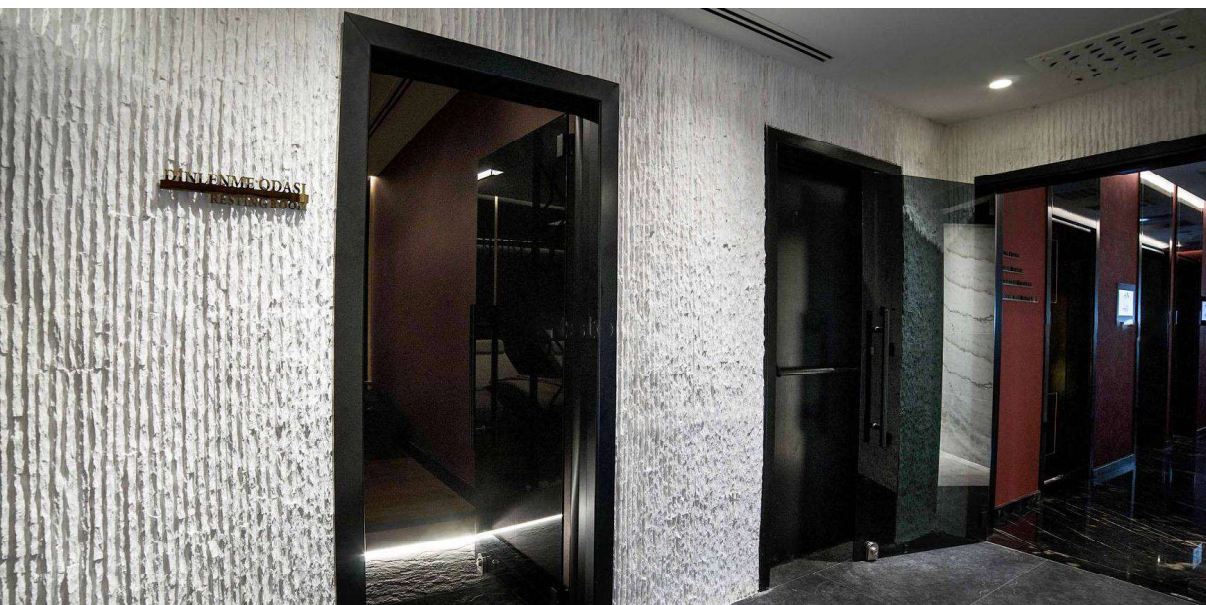




Pyramid  
Cement Texture, Light & Easy to Install

## Case Study





Waterflow Stone  
Cement Texture, Light &  
Easy to Install



