



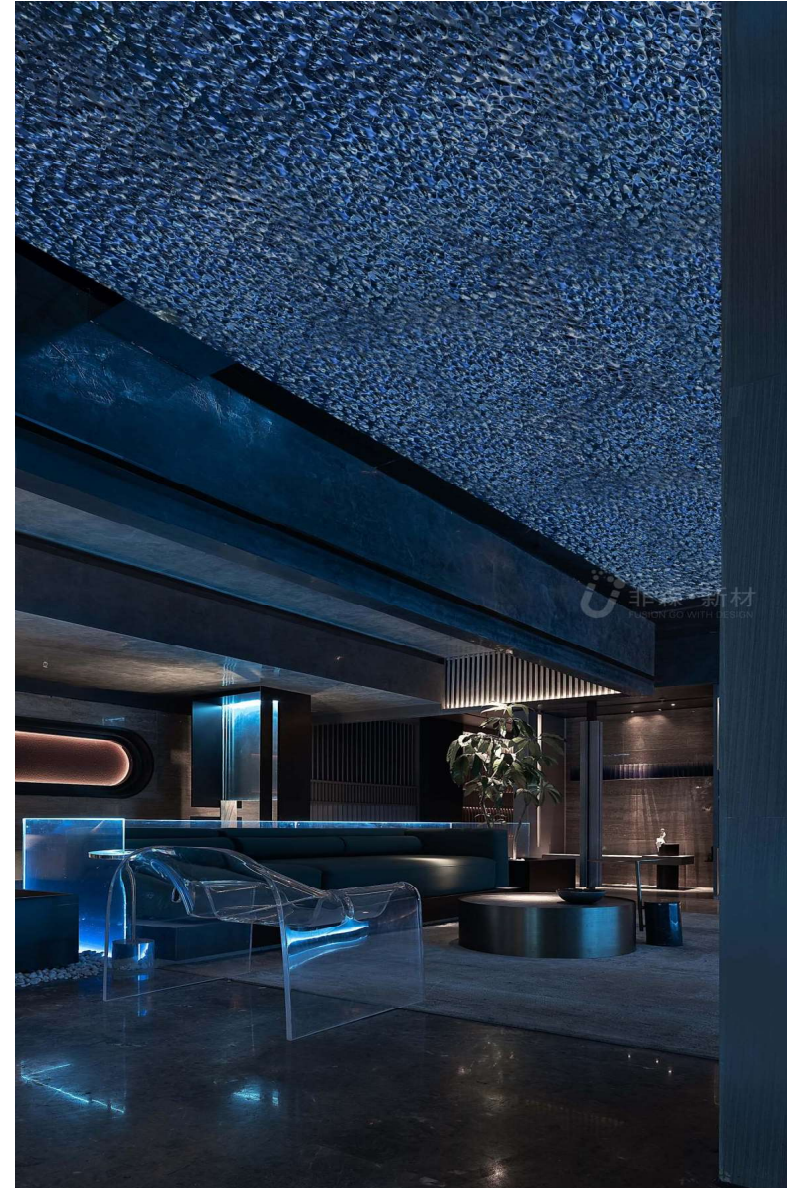
SURFACESTUDIO

YOUR VISION, YOUR SURFACE

Corrugated Steel Board

New Decorative Material

Content
Introduction
Color Display
Installation
Case Study



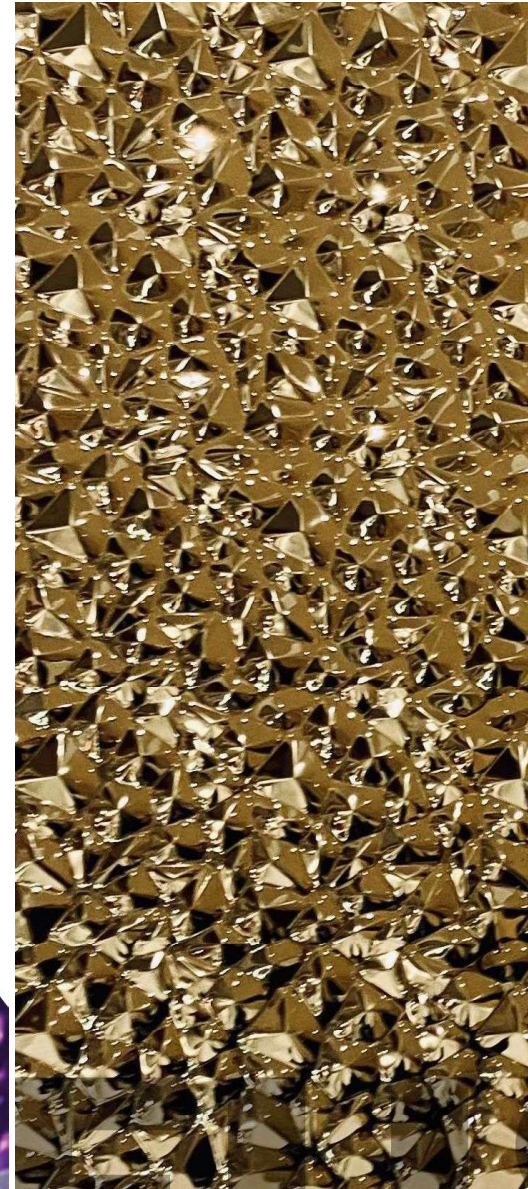
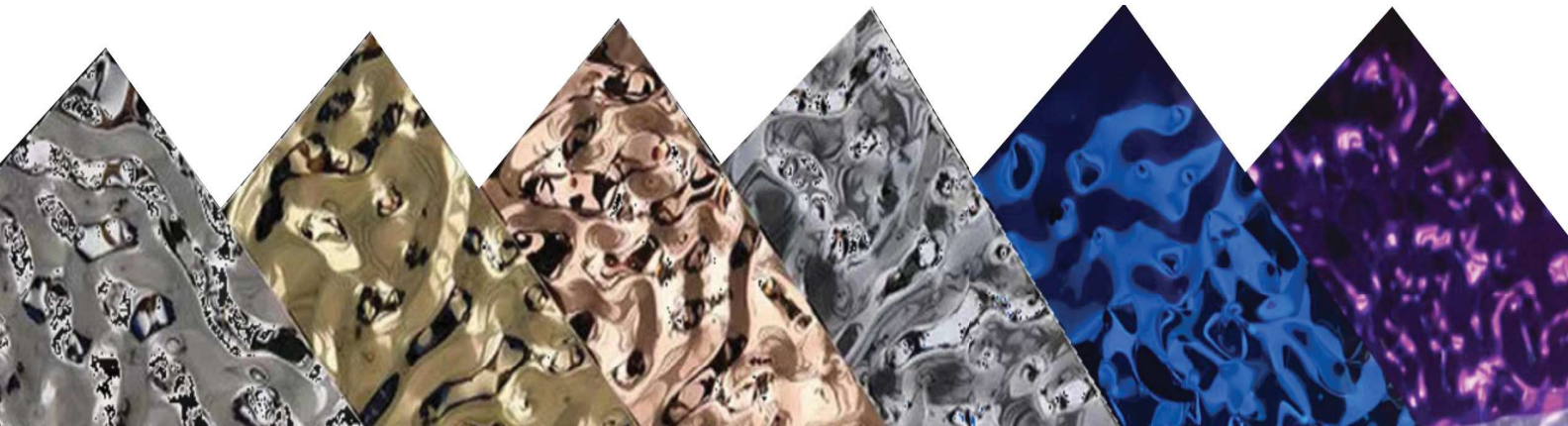
Introduction

Stainless steel embossing involves stamping a pattern onto a stainless steel rail to create an embossed design. The process typically uses either 304 or 201 stainless steel and can be customized to a variety of thicknesses. This technique is suitable for both interior and exterior wall and top decorations

Product name: Stainless steel embossed plate

Specifications: A variety of sizes and styles

Product features: Environmental protection, fire resistant, impact resistance, corrosion resistant, colorless, easy to clean and maintenance free



Color Display



Large corrugated plate
1215*2425mm



Medium water corrugated plate
1215*2425mm

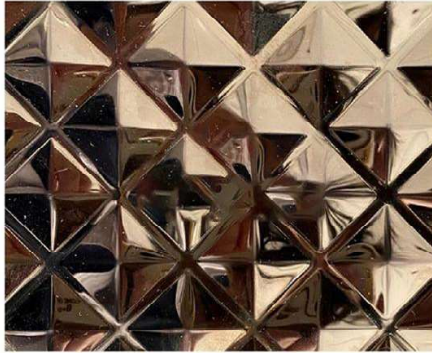


Small water corrugated plate
1215*2425mm

Color Display



Irregular triangle 855#
1219*2438mm



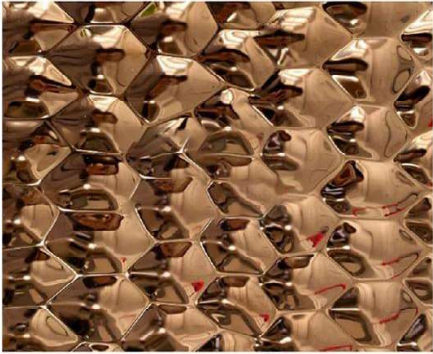
Hexagonal 869 #
1219*2438mm



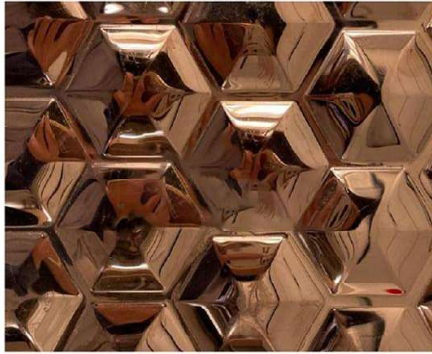
Large lentil anti skateboard
1219*2438mm



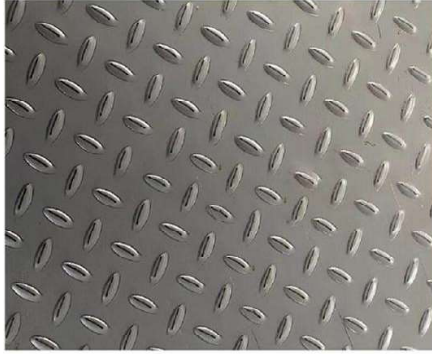
Big cellular
1219*2438mm



842 # water cube
1219*2438mm



Small diamond B35 #
1219*2438mm

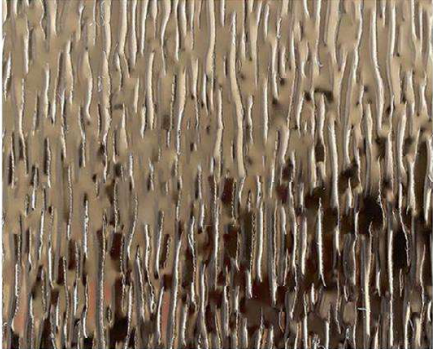


Lentil anti-skateboard
1219*2438mm



Small cellular
1219*2438mm

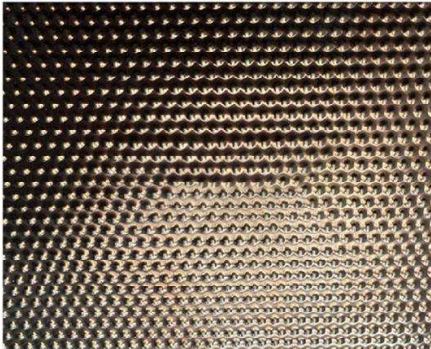
Color Display



Bark grain
1219*2438mm



Little Line One
1219*2438mm



Dot Number one
1219*2438mm

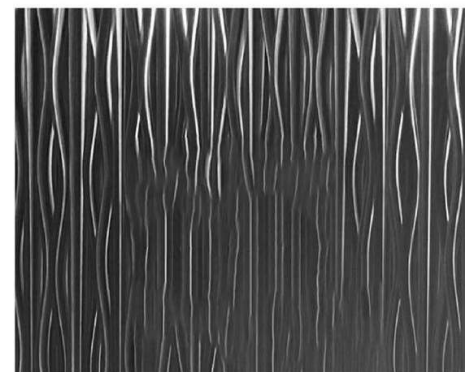


Fold the wave
1219*2438mm



Ripple of flowing water
1219*2438mm

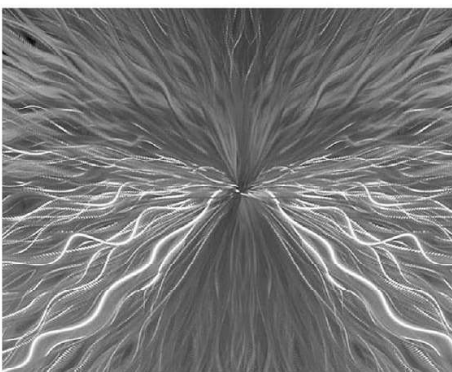
Color Display



Phantom stripes
1219*2438mm



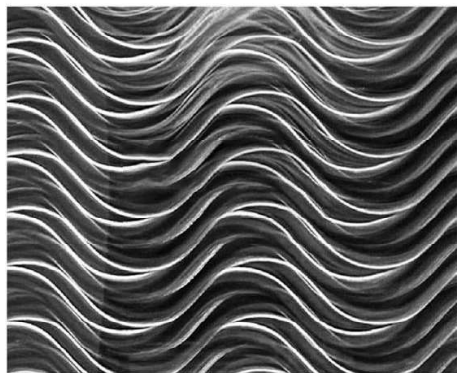
Hair silking
1219*2438mm



Dazzle colour stripes
1219*2438mm



Art surround
1219*2438mm



wave pattern
1219*2438mm



3 D grain
1219*2438mm



Camouflage pattern
1219*2438mm

Color Display



Large corrugated plate
1219*2438mm



Medium water corrugated plate
1219*2438mm



Small water corrugated plate
1219*2438mm



Small water corrugated plate
1219*2438mm



Large corrugated plate
1219*2438mm



Medium water corrugated plate
1219*2438mm



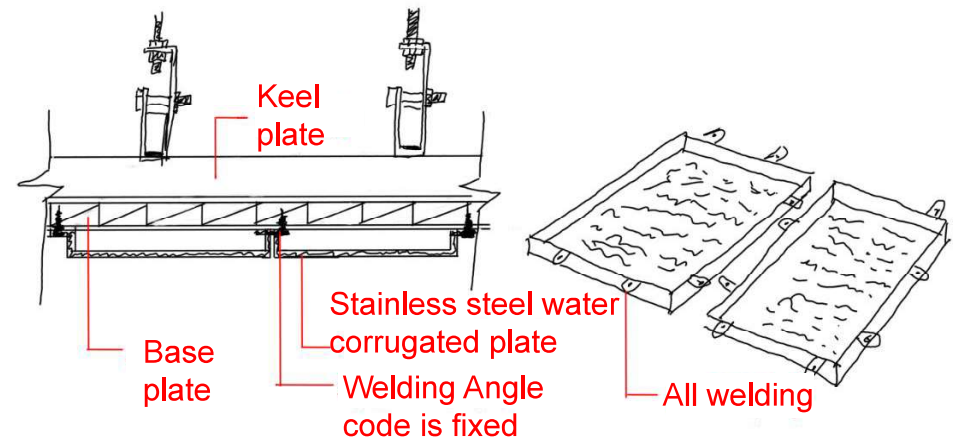
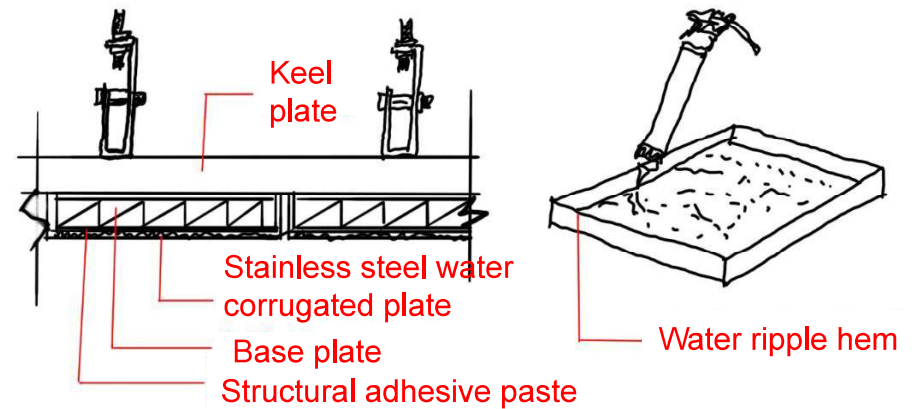
Small water corrugated plate
1219*2438mm

Installation

Cutting and folding: Before installation, cut and fold the sheet according to the actual size required.

Installation: Fix the corrugated plate with folded edge on the bottom plate using structural adhesive. The seams join together

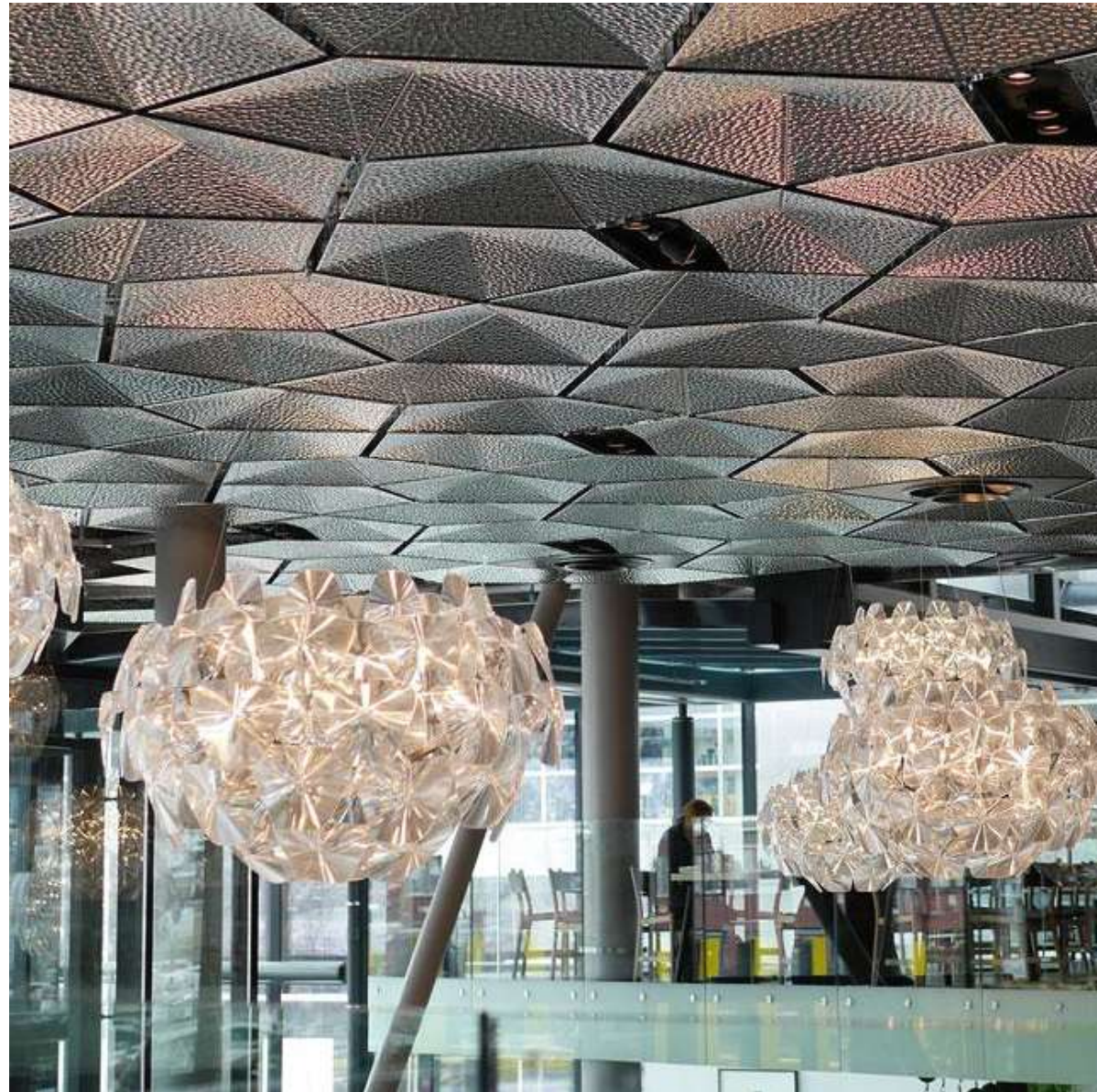
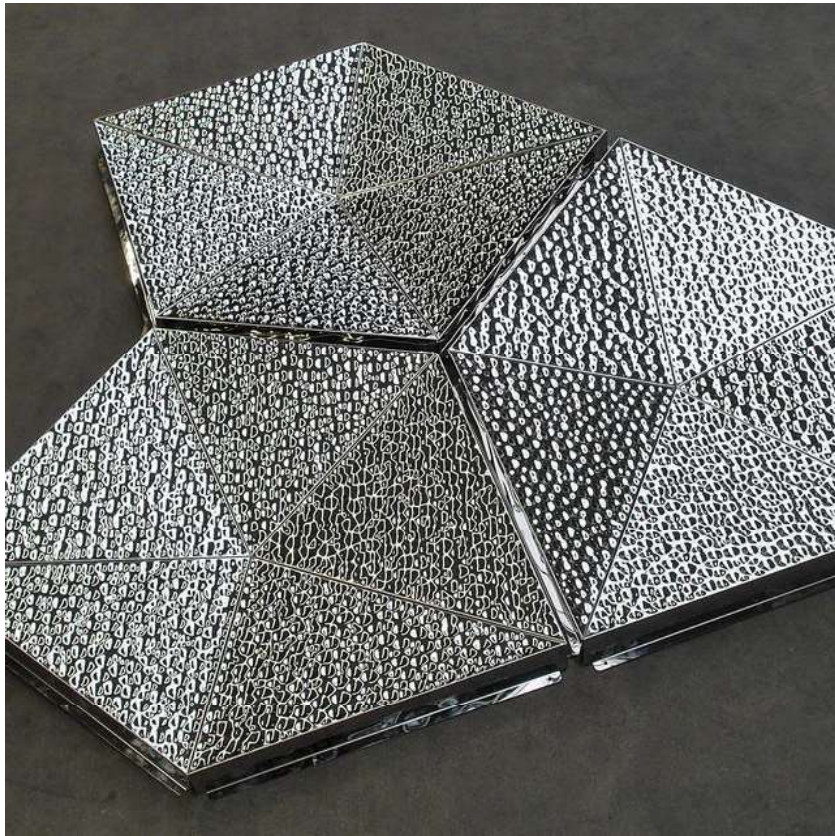
Reinforcement: The top surface should be supported and reinforced using a wooden support after installation; the wooden support can be removed after the glue is solidified.



Case Study



Big Cellular





Lentils Plate



S/S Embossed Water
Corrugated Plate

